



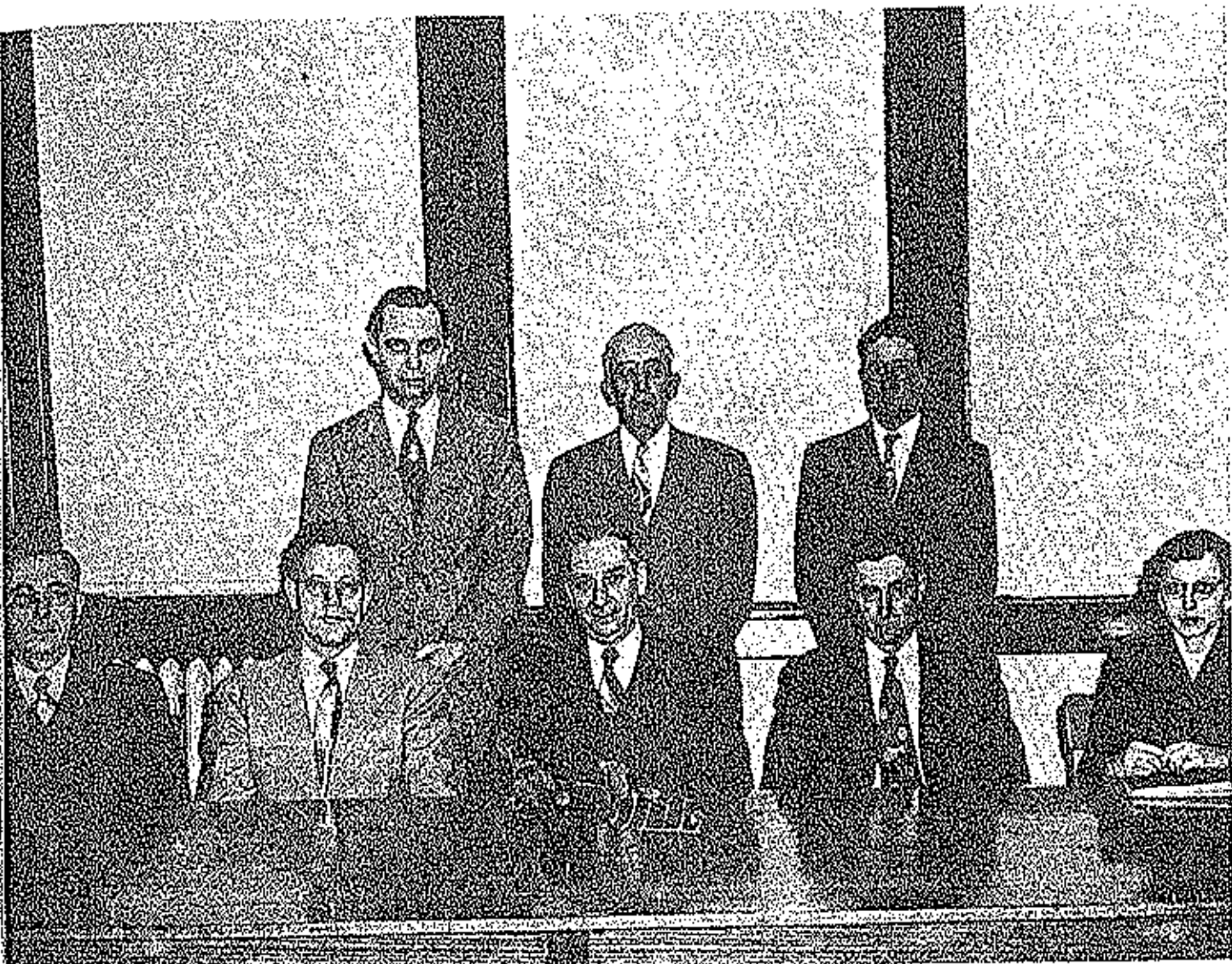
Dedication

In every branch of service and on every theater of action, former students of Eldon High School are serving their country.

We know them for the job they are doing. Duty has called, and they have responded. As they serve, they reflect the training, cultures, and traditions of Eldon High School.

We remember them for their achievements as students in honors, leadership, athletics, music, dramatics, and citizenship.

For what they are and what they have been, we dedicate this 1953 Referet to our former students in the armed services.



Board of Education of Eldon Administrative Unit R-1

STANDING - Left to Right:

MR. R. W. ROBINSON, Superintendent

MR. TED HERFURTH, Member

MR. DEWEY JACKSON, Member

SEATED - Left to Right:

DR. OLNEY SHELTON, Vice-President

DR. CARL ALMQUIST, Member

MR. FRED THORNBRUGH, President

MR. ALTON HENDRICKS, Member

MISS MAXINE HENLEY, Secretary-Treasurer



R. W. ROBINSON
Superintendent.



B. R. COLLIER
Principal



MAXINE HENLEY
Secretary



Faculty



FREIDA LANE
 B. S. in Education CMSC
 Mathematics
 Referral Sponsor
 Senior Sponsor



ELVIN M. HUNTER
 B. S. in Education, University of Missouri
 Co-Sponsor Of Junior Class
 Industrial Arts



JOHN HYATT
 B. S. in Education CMSC
 Kansas University
 Physical Education School
 Physical Education Coach
 "E" Club Sponsor



RUTH LUPARDUS
 A. B. Washington University
 University of Missouri, Latin,
 English I and IV
 2000-Honor Society Sponsor
 Freshman Sponsor



ETHEL WILSON
 B. S. in Education CMSC
 Home Economics
 Hostess Club Sponsor
 F. H. A. Sponsor



MARY LILLARD
 B. S. in Education NEMSC
 University of Missouri
 University of Illinois
 Librarian



WYLAN KUNZLER
 A. B. University of Missouri
 G. Science, Chemistry,
 Advanced Mathematics,
 Projector Club



HARLAN B. SNOW
 B. S. in Education SWMSC
 American History
 Speech, Drivers Education
 Sophomore Sponsor



BERTHA COLYER
 B. S. in Education
 Kirksville State Teachers College
 University Of Colorado
 University of Missouri
 Drake University



GERTRUDE TAYLOR
A. B. in English
O. B. U., University of Missouri
English, Spanish
M & C Sponsor



OLIVER E. STEPHENS
B. S. in Education CMSC
University of Missouri
Social Studies
Mathematics
Sophomore Sponsor



EUNICE STEPHENS
B. S. in Education CMSC
Master Education, University of Missouri
Referot Sponsor
Coachwoman



ALICE BISHOP
B. S. in Education CMSC
World History



GERALDINE BALDWIN
B. S. in Education CMSC
Christianity
Choral School
Northwestern University
Music
Music Club



ANN SUE ROGERS
B. S. in Education
Kirksville State Teachers College
Physical Education
Recreational Leadership



FRANK DRAKE
B. A. Culver-Stockton
University of Missouri
Biology Major
Co-Sponsor Pep Squad



HAROLD W. CLOTWORTHY
B. S. in Education
University of Missouri
Master Education
University of Missouri
D. O. Club
Junior Sponsor
Voc. Co-ordinator



CLIFFORD GREENWAY
B. S. Agriculture
University of Missouri
Vocational Agriculture
P. F. A. Advisor



CLARENCE LAWSON
Southwest Missouri
State College
Commerce and Mathematics
Junior High Mathematics
Shorthand



Seniors



MARIETTA YOWS
 Sr. Festival Maid - - 4
 Fresh. Festival Maid - 1
 Cheerleader - - - 1,2,3
 Color Bearer - - - 2
 Maroon and Gold
 Volleyball
 One-Act Plays
 Monitor



CAROL AUSTIN
 Fall Festival Maid - 1,3
 "B" Cheerleader - - 1,2
 "A" Cheerleader - - 3
 Student Commission - 1
 F. F. A. Maid - - - 3
 Maroon and Gold
 Honor Society
 Color Bearer - - - 1
 Freshman Volleyball
 Team



ARLESS JENKINS
 Softball
 Volleyball
 Honor Society
 Referee Editor
 Sophomore Maid - - 2
 Senior Maid - - - 4
 Basketball Maid - - 4
 Monitor
 Class Secretary - - 2,3
 Pep Squad - - - 1,2,3



PEGGY JEAN COONEY
 Volleyball - - - 1,2
 Softball - - - 1,2,3
 Honor Society
 Referee
 Maroon and Gold - - 2
 F. F. A. - - - - 1
 Monitor
 Class Secretary - - - 1
 Pep Squad - - - 1,2,3
 Girls' Glee Club
 Girls' Intramurals



HELEN COOPER
 Basketball Queen - - 4
 Senior Class
 Secretary - - - - 4
 Pep Squad President
 Maroon and Gold
 Content Plays
 Mixed Chorus
 Band
 Orchestra
 Girls' Glee Club
 Library Staff
 Vice-President



BILL SIMMONS
 Student Council - - 1,4
 N. O. - - - - - 4
 Softball - - - 2,3,4
 Band - - - - - 1,2
 Chorus - - - - - 1,2
 F. Club
 Secretary - - - 3
 President - - - 4
 Senior Class
 Vice-President - - 2,3
 Basketball (D) - - 1
 Basketball (A) - - 2,3,4



E. J. HANLEY
 D. O. Club - - - 1,4
 F. F. A. - - - - 2,3



MARILYN BARBOUR
 Girls' Glee Club
 Mixed Chorus
 Operetta - - - 1,2
 Speech and Dramatics
 Basketball Maid



ANNA LOU ROUTON
 Festival Queen - - - 4
 F. F. A. Queen - - - 3
 Sophomore Maid
 Student Council
 Treasurer - - - 4
 Band
 Library Staff
 Pep Squad - - - 1,2
 F. H. A. - - - 1,3
 Monitor
 Volleyball
 Intramurals - - - 4



SERENA SHIRKLES
 Volleyball - - - 3
 Band - - - 1,2,3,4
 Orchestra - - - 4
 F. H. A. - - - 1,2,3
 Pep Squad - - - 1,2
 Monitor

JAMES S. MILLER
 F. F. A.



DONNA FARMER
 Library Secretary
 Pep Squad
 F. H. A.
 Maroon and Gold
 Speech
 Monitor
 Basketball Intramurals
 Volleyball - - - 1,2

JANE TWITCHEL



CARL JARRETT
 F. F. A. - - - 1,2
 D. G. - - - 4
 Projector Club
 President - - - 2,3



JANET MYERS
 Pep Squad - - - 1,2
 F. H. A. - - - 1,2,3
 Basketball Maid - - - 4
 Basketball
 Intramurals - - - 1
 Glee Club - - - 1,2,3
 Monitor - - - 1
 Volleyball
 Intramurals

JUNE FRANCIS
 Pep Squad - - - 1
 F. H. A. - - - 1,2,3
 Library Club
 President - - - 3,4
 Basketball
 Intramurals - - - 1
 Mixed Chorus - 1,2,3,4
 Glee Club - - - 1,2,3,4
 Operetta - - - 2
 Softball - - - 1
 Volleyball
 Intramurals





BETTY MAR DEFFENBAUGH
 Softball
 Band
 Orchestra
 Mixed Chorus
 Glee Club
 Library Club
 Operetta - - - - 2
 Girls' State
 Sophomore Pilgrimage



RUTH THOMPSON
 Band
 Orchestra
 Mixed Chorus
 Glee Club
 Operetta - - - - 2
 Speech Contest - - - 1
 Maroon and Gold
 Assistant Feature
 Editor of Maroon and
 Gold
 Pep Squad - - - - 1, 2



JACKIE BOND
 Eugene High - - - 1, 2
 F. F. A.
 D. O. Club



RUTH ANN SCHUPP
 F. F. A.
 Girls' Glee Club
 Band
 Pep Club
 Monitor



BETTY JO WATT
 Girls' State - - - 3
 Student Council
 Secretary
 Maroon and Gold
 Business Manager - - 4
 Basketball Males - - 4
 Operetta - - - - 2
 Band
 Chorus
 Glee Club



RUSSELL WOOD
 Student Council - - 3, 4
 Student Council
 President - - - 4
 Honor Society - - - 3, 4
 Monitor Captain - - 4
 Speech Club
 President - - - 4
 Intramural Basketball - 3



JAMES MCKINLEY
 "A" Basketball
 "B" Basketball
 Mixed Chorus
 Band
 F. F. A. Treasurer
 F. F. A. Basketball
 F. F. A. Softball
 Boys' Glee Club



ROY BUNCH
 Softball - - - - 4
 Junior High Basketball
 Intramurals
 Champion - - - 3
 Projector Club



ELIZABETH HARVEY
 F. H. A. - - - 1,2,3,4
 Hostess - - - - - 2
 Library - - - - - 2,3
 Pop Squad - - - 2,3,4



PHIL REICHEL
 Softball
 Chorus President - - 4
 E Club
 Intramural



ALBERT CRUM
 Honor Society Vice-
 President
 Maroon and Gold
 Senior Class President
 Basketball
 Track
 Softball
 Student Council
 Band - - - - - 2,3
 E. Club



PEGGY JEAN BOND
 Pop Squad - - - 2,4
 Maroon and Gold - 2,3,4
 Girls' Intramural



KATHRYN GEORGE
 Speech Contest - - - 1
 D. O. Club
 Secretary-Treasurer
 Volleyball - - - - - 1
 Softball - - - - - 1,2
 F. H. A.
 Library
 Maroon and Gold - - 2,1



ARNOLD MEYER
 F. P. A.
 Mixed Chorus
 Boys' Glee Club



DAVID SHELTON
 Honor Society
 Referee Staff
 Senior Softball - - - 2



CARLENE SPALDING
 F. H. A. - - - 1,2,3,4
 Pop Squad - - - 2,3
 Hostess Club - - - 1
 Glee Club



CLARA MARIE CAMPBELL
 Hostess Club
 F. H. A.
 Library Club
 D. O. Club
 Intramurals
 Principal's Secretary-4



JANICE FINLEY
 Senior Class
 Vice-President
 Student Commission - 3
 Honor Society
 D. A. R.
 Representative - - - 4
 D. O. Club Reporter - 4
 D. O. Club



ELAINE WETZEL
 Pep Squad - - - 2,3
 Maroon and Gold - 2,3,4
 Girls' Intramurals



ROBERT EUGENE WRENEMAN
 F. F. A.



JAMES BLACKBURN
 Student Council - - - 3
 Junior Class President
 F. F. A.
 D. O. Club



SHIRLEY BLEDSOE
 F. H. A. - - - 1,2,3,4
 Hostess Club - - - 2
 Library - - - - 3
 Pop Squad - - - - 2,3
 Girls' Intramurals



SHIRLEY JONES
 F. H. A.
 Library Club - - - 3
 Volleyball - - - 2
 Softball - - - - 2



WILLIAM EDWARD CRAIG
 Shop



DALLAS MACK
 Freshman Class
 President
 Sophomore Class
 President
 Student Council - - - 1,2
 Junior High Basketball
 "B" Team Basketball
 D. O. Club - - - - 3
 Intramurals
 Honor Society - - - 3,4
 Junior High Softball



CARLETA SHORES
 Library Club
 Secretary - - - - 2,3
 F. H. A.
 Treasurer - - - - 2
 Softball
 Volleyball
 Hostess Club - - - 3
 Pep Squad - - - - 2



NINA HULL
 Volleyball
 Softball
 Hostess
 Library



JERRY EVANS
 Freshman Class
 Vice-President
 Student Council - - 2,3,4
 Honor Society - - - 3
 Intramurals Director
 "E" Club
 Pep Squad - - - - 1
 Student Manager - - 3,4



NEAL STEPHENS
 Band
 Speech
 Dramatics
 Color Bearer
 D. O.
 Intramurals Basketball
 Track - - - - - 1



DOROTHY HOPKINS
 F. H. A.
 Softball
 Volleyball



NANCY BERENDZEN
 F. H. A.



WALTER REA
 D. O. Club
 Projector Club
 F. F. A.
 F. F. A. Softball
 F. F. A. Basketball
 F. F. A. Judging Team



RAYMOND SPRATT
D. O. Club - - - 1,4
Basketball



DALE GURRANCE
Student Council Vice-
President - - - 3
Mixed Chorus
Boys' Glee Club
F. F. A. Softball
Basketball Intramurals
F. F. A. Vice-President
F. F. A. Secretary



EARL MARRIOTT
D. O. President
Mixed Chorus
Projector Club



ELIZABETH ENLOE
F. F. A.



LORAINE BOAN
Basketball
Intramurals - - - 2



ROBERT LEE HARVEY
Basketball - - - 2,3,4
Softball - - - 2,3,4
Track - - - - 2,3
"E" Club
"E" Club
Vice-President



MYRON TAYLOR
Maroon and Gold
Assistant Editor - - 4
Student Council
Representative
Band
Mixed Chorus
Boys' Glee Club
Play Contest
Speech Contest
Operetta - - - 1,2,3
Projector Club
Vice-President - - - 4



PHIL CARR
Honor Society
Maroon and Gold Editor
Student Council - - 4
Basketball Team
Manager
"E" Club
Boys' State
One-Act Plays
Chorus



VICTOR GAMPHOK
 D. O. - - - - - 1940
 Inanamurak
 Junior High
 Softball - - - - - 1



LESTER T. SCOTT
 Projector Club - - - - - 1
 F. F. A. - - - - - 1



JAMES L. HENDRICKS
 F. F. A. - - - - - 1, 2, 3



CLAUDINE HOLLAWAY
 F. H. A.
 D. O.
 Library Staff
 Inanamurak



JOANN SIMPSON
 F. H. A.
 Hostess



GEORGE POLLY
 D. O.



JOHN BOB BACON
 D. O.
 F. F. A.
 Inanamurak Arts



MILDRED LAUGHLIN
 F. H. A.
 Inanamurak



BILLY RUSH
 Shop
 Agriculture



BARBARA HEES
 Pep Club
 Chess Club - - - - 1
 F. H. A.
 Intramurals



ARDYS ROSE DUSKY
 Head
 Volleyball
 Pep Squad



ROSA WOOD
 Pep Squad - - - - 1
 F. H. A. - - - - 4



BOBBIE SCHUPP
 Tusculum High - - - 1
 Green and Gold
 Honor Society



JIMMIE BROWN
 D. O.
 Intramural Basketball
 Orange High - - - 1, 2, 3



ROY HERSCHEL BOND
 F. F. A.
 Shop



MARY SCHUPP
 Tusculum High - - - 1
 Meroon and
 Gold - - - - 1, 2, 3, 4
 Honor Society - - 2, 3, 4



NORMALKE AGER
 F. H. A. - - - 1,2,3,4
 Library Staff - - - 2,3,4
 Pee Squad - - - - 1
 Girls' Intramurals
 Softball
 Volleyball
 Girls' Glee Club



BILL ADCOCK
 F. F. A.
 F. F. A. Vice-President
 F. F. A. President
 F. F. A. Softball
 Speech
 Industrial Arts



KENNETH JACK CARROLL
 Shop
 Basketball Intramurals
 Softball Intramurals



LENA MARTIN
 F. H. A.
 Library Club
 Intramural Volleyball
 Hostess Club
 Secretary - - - - 4



VER BAI, DAVENPORT
 Hostess Club - - - 2,3,4



ROBERT H. WILLIAMS
 F. F. A. - - - - 1,2,3
 Projector Club - - - - 3
 D. O. Club - - - - 4



KENNETH TYLER
 D. O. Club



BARBARA SHEPHERD
 F. H. A. - - - 1,2,3,4
 Library - - - - 2,3,4
 Glee Club - - - 1,2,3
 Volleyball
 Intramurals



BARBARA WOOD
 Hostess Club
 Library Club
 Intramurals
 F. H. A.
 D. O.



DONALD STONE
 F. F. A.
 F. F. A. Softball
 F. F. A. Basketball

KENNETH HARBISON
 D. O.
 F. F. A.



CLEMENT IVEN
 "B" Basketball - - - 2,3
 F. F. A.
 F. F. A.
 Basketball - - - 2,3,4
 F. F. A. Softball - - - 3
 Projector Club - - - 3

HELEN MAY BROWN
 F. H. A.
 Intramurals
 Library



LAVERNE SIMPSON
 F. H. A.
 Hostess
 Volleyball
 Softball
 D. O.



MARGARETT COOPER
 F. H. A. - - - 1,2,3,4
 F. H. A.
 Parliamentarian - - 4
 Hostess Club - - - 2,3,4
 Hostess Club
 Treasurer - - - 3
 Volleyball - - - 3
 Softball - - - 4
 Library Club - - - 3,4

WILMA RUTH CROUSE
 Library
 F. H. A.



Senior Snapshots





Undergrads



KENNETH KAYS
President

Junior Class of '53

Vice-President - - - - - Milton Kays
Secretary - - - - - Marion Davidson

H. BRADY
L. CANTWELL
C. SULLENB
M. DAVIDSON
P. RICHARDSON



G. CLARK
B. CURTY
M. CRUM
E. ENLOE
R. THOMSON



T. STARLING
N. BLACK
C. BANNER
H. HARVEY
G. HICKS



J. CALDWELL
C. WALKER
E. WIENEMAN
H. CHALMERS
P. WORTHY



F. CAMDEN
D. KUNZLER
J. AHART
K. CRUM
B. AHART



D. FEARON
D. VAUGHAN
M. WATT
D. STROAD
T. STICKNEY





H. BERENDZEN
S. CARR
S. BEAR
B. THORSON
M. HENDRICKS



A. FEAL
D. PROCTER
J. GREEN
M. REICHEL
N. AMOS



J. HULL
J. ALLEN
L. KEMP
W. HARVEY
M. DENNY



N. MENSTENBERG
J. WALLS
B. TWITCHEL
M. KAYS
N. WHITE



S. ISLER
J. SMITH
G. ABBETT
C. WELLS
D. THOMPSON



O. SPENCER
M. ROMBAUER
L. McMILLIN
W. SHIKLES
K. KAYS



PAUL SIMMONS
President

Sophomore Class of '53

Vice-President - - - - - Amy Ruth Martin
Secretary - - - - - Marge McDonald

M. McDONALD
M. SUMMERS
T. VILLI
J. WALCH
J. MILLARD



A. OPIE
O. LEHR
L. WATTS
D. MACE
D. NICHOLS



W. SNYDER
B. STONE
J. BLAIR
G. ROBINSON
J. JONES



D. GORTNER
D. RIDWELL
A. THORSON
B. MURPHY
L. THOMAS



A. MARTIN
R. HARRISON
D. OPIE
L. REA
K. FORRESTER



J. ROWLAND
J. CRIGLER
D. MAHN
C. SULLENS
W. BEDWELL





E. YEAL
D. SIMMONS
C. SEARS
C. IVEN
J. JONES



Y. HIBDON
H. THOMAS
T. TODD
D. TAYLOR
R. WOODS



J. HULL
R. KALLENBACH
P. LAWSON
W. SIDDEBTOM
L. POSTER



D. WEBB
D. JESTER
D. MILLER
L. WOODS
D. HOLDT



A. HECO
J. HERFORTH
G. WORKMAN
A. WISE
A. WILLIAMSON



B. COX
H. BERNER
W. BAQUET
K. BAILEY
B. BRADY



G. HART
B. SPRATT
D. HAM



F. GOTTEN
W. BAILEY
R. ADCOCK
P. BOSTER
B. WILSON



D. CARROL
V. FOSTER
D. THOMPSON
L. BRANSTETTER
G. WALLACE



J. LAUGHLIN
P. BOND
R. BOND
V. DAVENPORT
L. BARBEE



K. AHART
E. JAMES
N. BOND
M. WENMES
G. BLACK



B. BLANKENSHIP
L. BOND
S. BRUNER
J. HADER
C. COX



S. CAMDEN
G. GUNN
D. HOLLAWAY
D. WALLACE
P. MARTIN





BILL HOUSTON
President

Freshman Class of '53

Vice-President - - - - - Claude Hayes
Secretary - - - - - Ramons Maher



K. ALFORD
B. HOUSTON
D. TAYLOR
R. BOND
B. GUMP



S. WHITTENBERG
P. GOPPER
C. HICKS
A. KARLEN
R. CLEMENT



G. ROARK
G. ALDERMAN
G. HENDERSON
L. HELDSTAR
E. MEYER



D. RANNER
J. COMER
Y. MCKINNEY
B. BAILEY
D. COLLIER



C. HAYES
M. DUNSTAN
E. WORTHY
V. HAYES
R. WHITE



P. WHITTEN
D. VANPOOL
V. THOMPSON
R. THOMPSON
E. TAYLOR



S. POPE
L. BACON
R. MAHER
R. BEGAN
B. SCOTT



G. NOBLEY
D. GRAHAM
J. BUKSTRESSER
N. BASHORE
G. PAGE



B. COFFMAN
R. BAILEY
M. BLACK
C. REA
E. BARNHART



O. ACEE
C. ROGERS
W. BEALER
D. BOND
E. HAMMOND

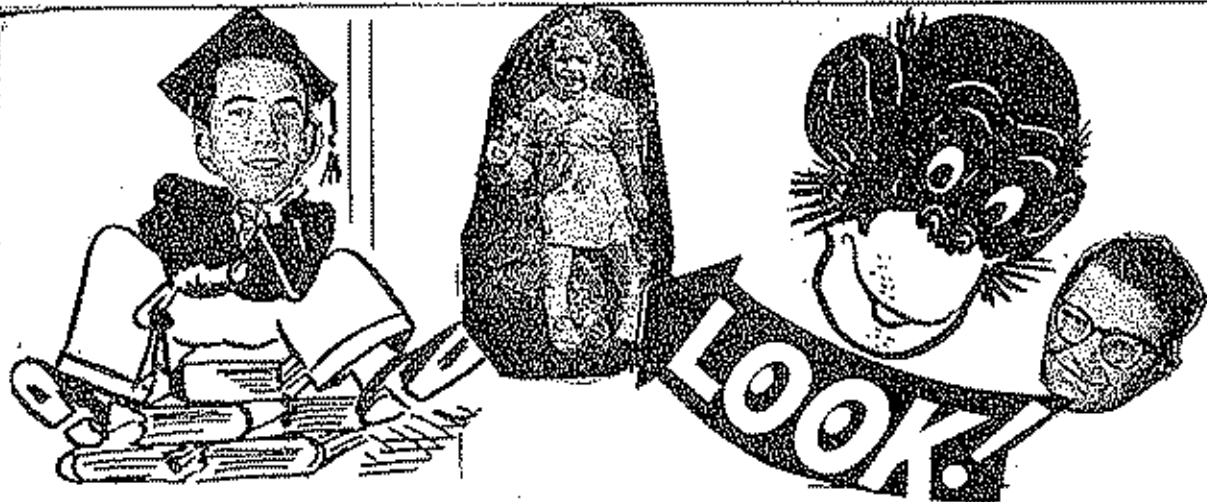


A. BROWN
J. HICKS
P. BERENDEEN
D. THOMAS
J. TAYLOR



D. SMITH
D. STARLING
C. STEPHENS
B. WATT
R. WALKER





C. BRADY
G. HEGG
M. HOUSTON
B. HOUSTON
S. KEHR



J. CARLOCK
L. HOLLOWAY
D. MCKINLEY
W. ROBBINS
V. BUNCH



G. KEITH
H. DAVENPORT
C. HICKS
R. KELLY
M. KELLY



R. McQUERRY
K. MORGAN
G. GOODRICK
W. MILLER
G. BELLAMY



L. JONES
E. RANUM
C. MILLER
J. JONES
S. REYNOLDS



P. SNODGRASS
T. SLYTER
W. WHITTAKER

Underclassmen

CENSORED

POISON





Activities

Student Council



RUSSELL WOOD
President



BETTY JO WATT
Secretary



LELAND McMILLIN
Vice-President



ANNA LOU ROUTON
Treasurer



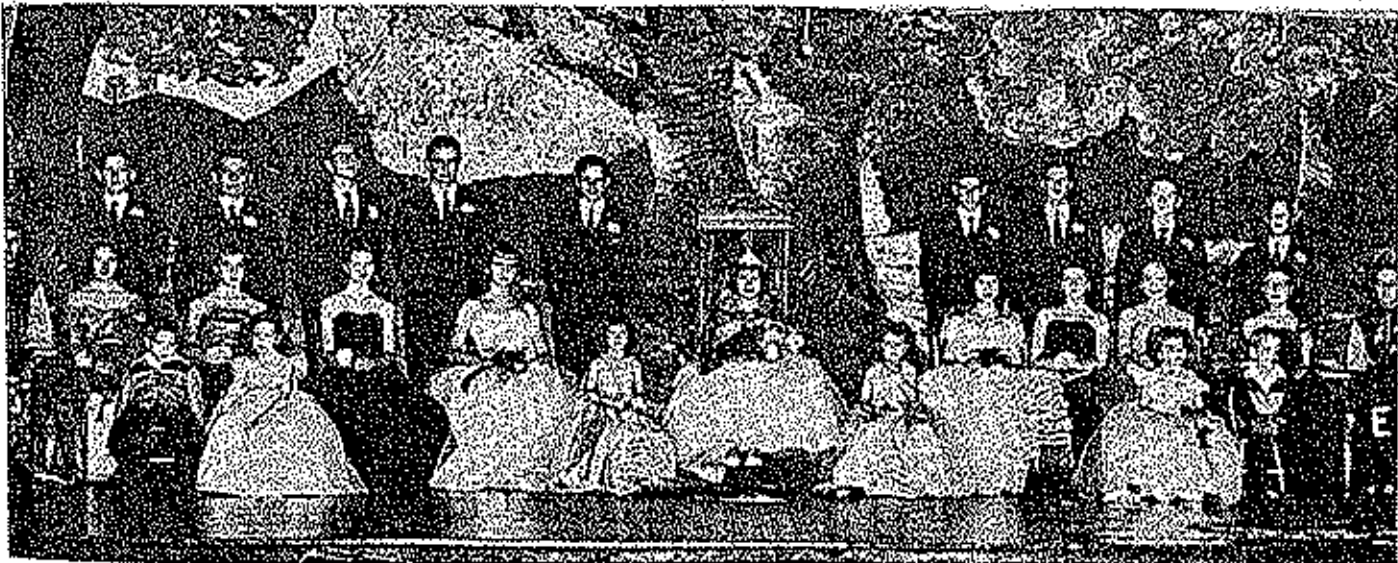
ARLISS JENKINS
Maid Of Honor



ANNA LOU ROUTON
Queen Of Popularity and Beauty



MARIETTA YOWS
Maid Of Honor



Queen - Anna Lou Routon, Senior Attendants - Arliss Jenkins, Robert Harvey, Marietta Yows, Earl Marriott, Junior Attendants - Marilyn Denny, Carl Dean Walker, Sue Carr, Paul Richardson, Sophomore Attendants - Jimmie Lou Crigler, Gary Coan, Joan Blair, Jerry Welch, Freshman Attendants - Kay Alford, Billy Houston, Clyde Kee, Bethel Coffman, Heralds - Carolyn Beady, Dorothy Sanner, Wayne Hlavacek, Julieen Crane, Christy Kowser, Diana Barnhouse, Mary Lee Rohlf, Gary Dawson, Student Body President - Russell Wood, Last Year's Queen - Catherine Holder.

Honor Society



Mrs. Leonard - Sponsor, Janice Finley, Sue Carr, Walter Harvey, Betty Jo Watt, Kenneth Keys, Phil Carr, Mary Schupp, David Shelton, Louise Schupp, Sandra Bear, Dwight Stroad, Connie Clark, Marlon Davidson, Lois Lynn Kehr, Carol Austin, Arliss Jenkins, Norma Arnes, Macolyn Denay, Albert Crum, Charles Banner, Russell Wood, J. D. Blackburn, Milton Keys, Carl Walter, Absent Member - Peggy Gosney.

Officers-First Semester



President-Walter Harvey



Vice-President-Janice Finley



Secretary-Sue Carr



President-Betty Jo Watt



Vice-President-Kenneth Keys



Secretary-Phil Carr

Officers-Second Semester



Starlight

PROMENADE





Projector Club

Wyman Kunzler, Sponsor

James Herfurth
Jerry Welch
Marvin Summers
Harry Chalmers

Lester Scott
David Miller
Donald Gortner
Gary Gunn



Maroon and Gold Staff



PHIL CARR - EDITOR

Associate Editor -	Sue Carr
Assistant Editor -	Myron Taylor
Feature Editor -	Albert Crum
Sports Editor -	Kenneth Kays
Scandal Editor -	Carol Austin
Business Manager -	Betty Jo Watt
Sponsor -	Mrs. Taylor
Co-Sponsor -	Mrs. Stephens

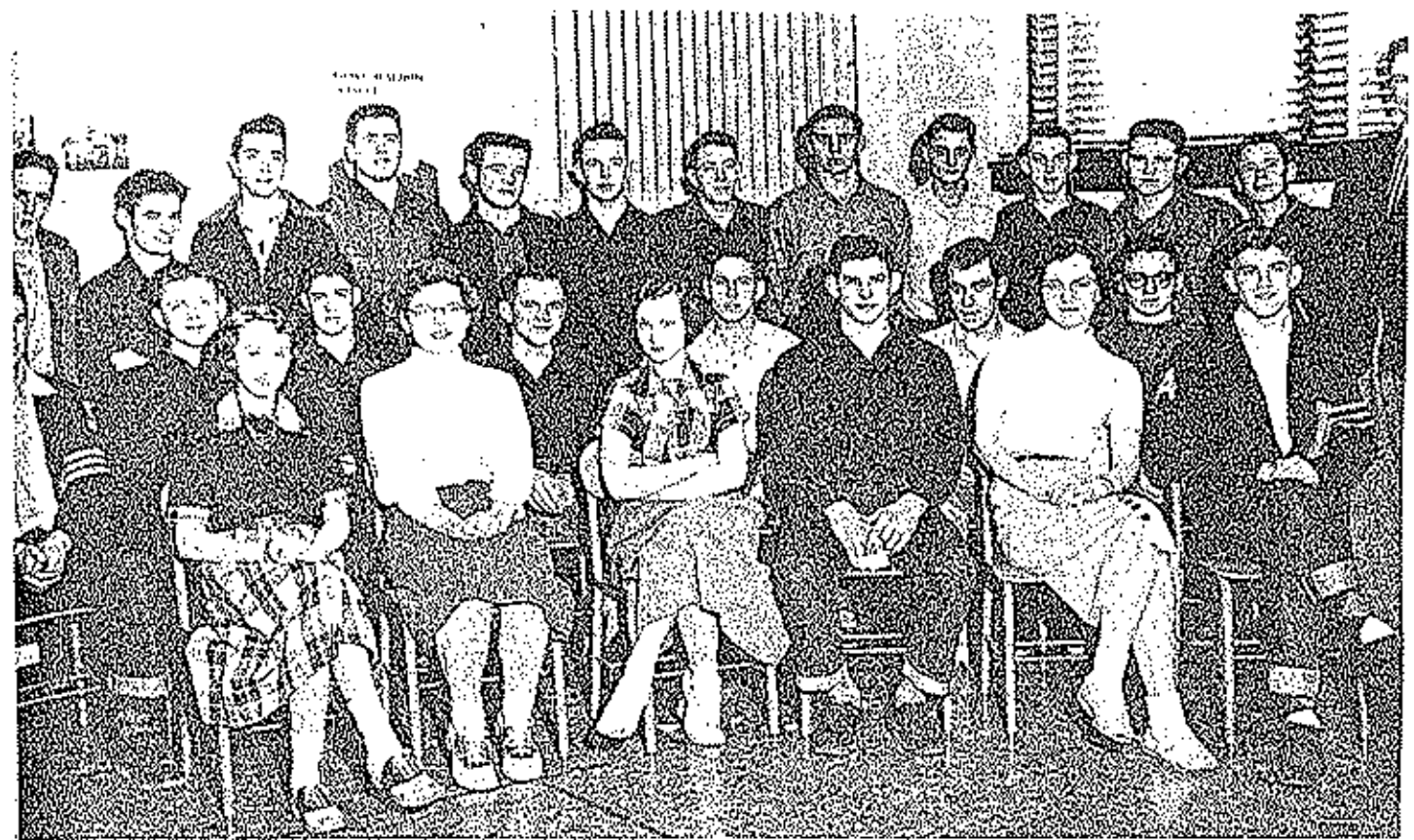




Library Staff

President - - - - - June Francis
 Vice-President - - - - - Helen Cooper
 Secretary - - - - - Carleta Shores
 Treasurer - - - - - Donna Pearson
 Reporter - - - - - Delberta Hollaway
 Sponsor - - - - - Mary Lillard

Kathryn Forrester, Anna Lou Routon, Barbara Shepherd, Norma Agne, Margaret Cooper, June Francis, Catherine Iven, Helen Cooper, Donna Pearson, Connie Henderson, Joan Blair, Joann Allen, Dorothy Samner, Bertha Stone, Delberta Hollaway, Darloan Jester, Betty Scott, Lena Martin, Ramona Maher, Clarence Hicks, Clara Hicks, Bonnie Wilson, Harold Perendzen, Thelma McKinney, Marion Davidson, Shirley Pope, Carol Miller, Carleta Shores, Billy Sue Twitchel.



D. O. Club



Sponsor - - - - - Harold Clotworthy

- FIRST ROW:** Left to right-Geraldine Abbott, Clara Campbell, Kathryn George, Earl Marriot, Janice Finley, Leland McMillin.
- SECOND ROW:** Bill Simmons, Clifford Sullens, Carl Jarrett, E. J. Hanly, Jimmie Browe, Bill Spratt, Walter Rea.
- THIRD ROW:** Kenneth Tyler, Bob Williams, Kenneth Harbison, Olney Spencer, Harold Akurt, Dwight Stroad, J. D. Blackburn, Hilton Brady, Jackie Bond, Victor Gampfor, Neal Stephens, Glen Hicks.



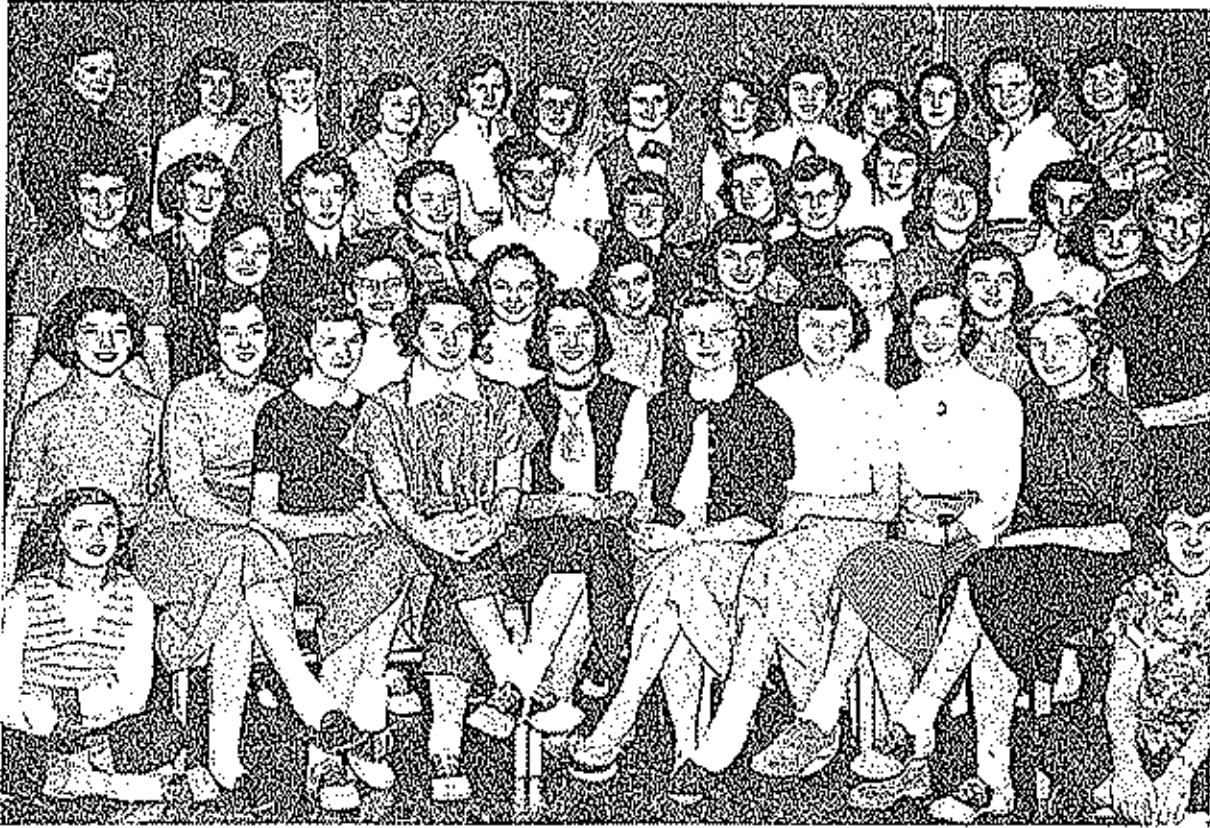


Referet Staff



ARLISS JENKINS - EDITOR

Assistant Editor - - - - -	Milton Kays
Art Editor - - - - -	Peggy Gosney
Assistant Art Editor - - - - -	Elsie Wieneman
Business Manager - - - - -	David Shelton
	Alice Wise
	Carl Walker
	James Herfurth
	Amy Ruth Martin
Sponsor - - - - -	Freda Lane
Co-Sponsor - - - - -	Mrs. Oliver Stephens



F. H. A.

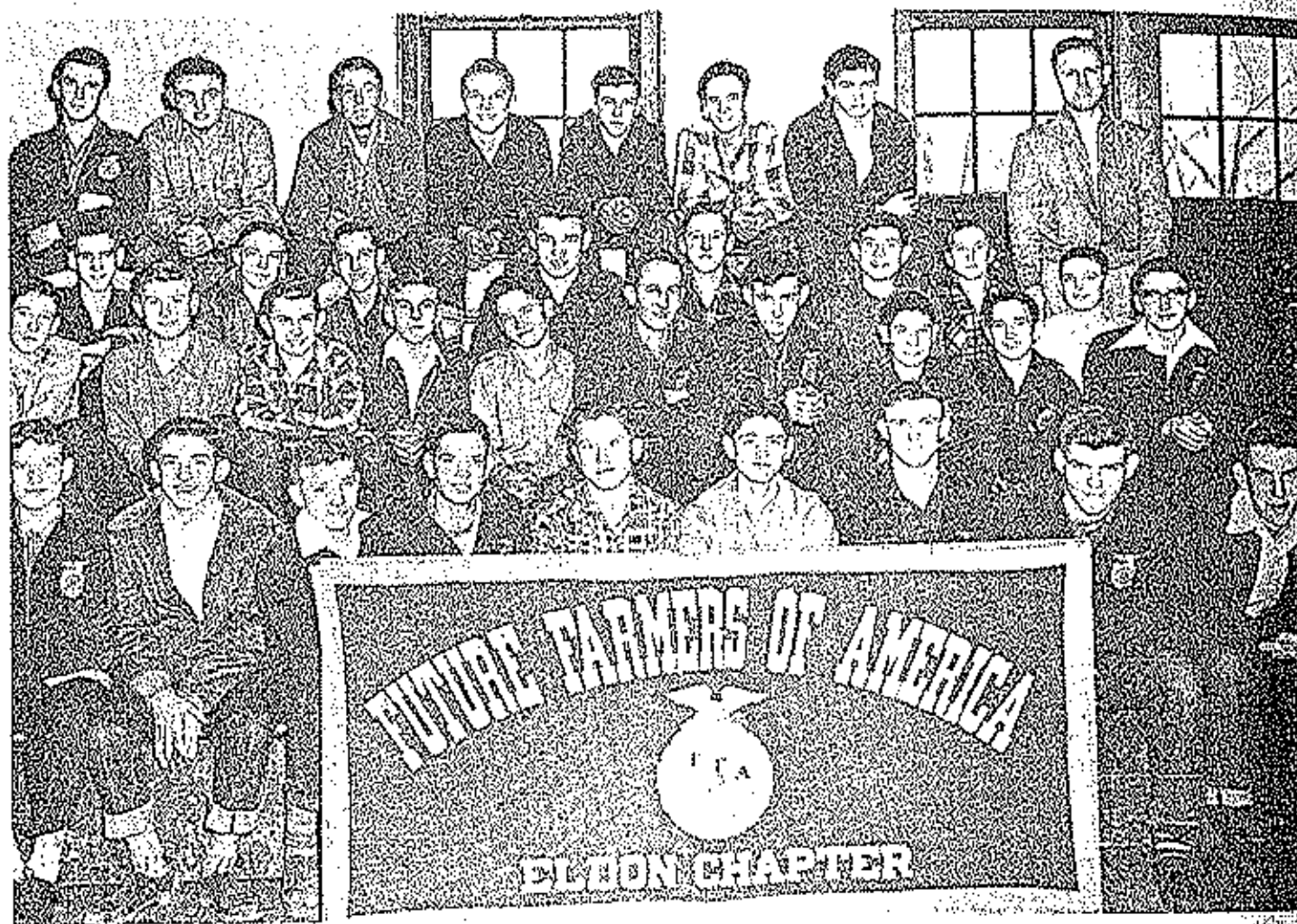
MRS. WILSON - SPONSOR



Hostess Club

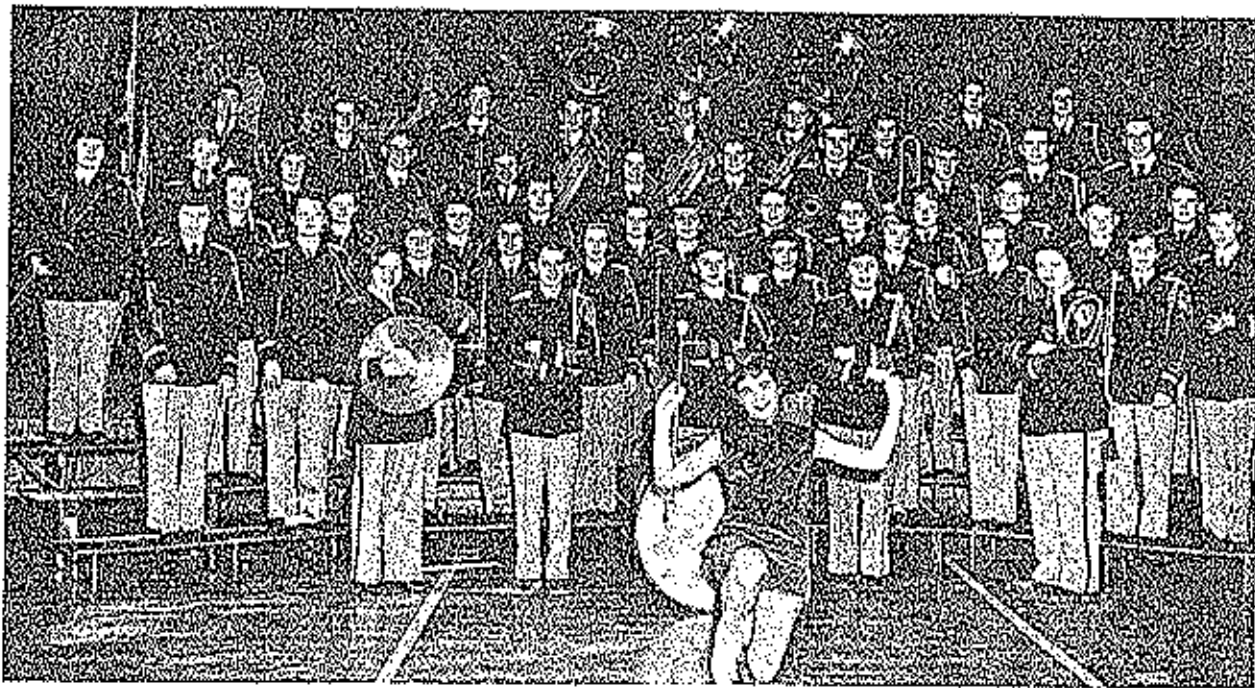
MRS. WILSON - SPONSOR

F. F. A.

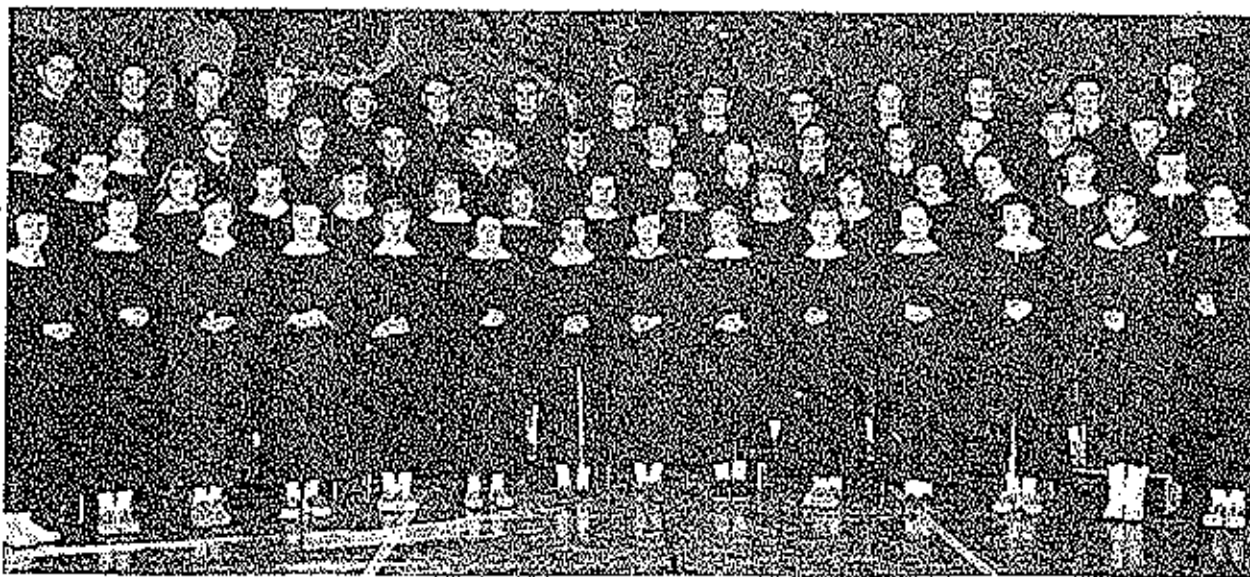


President - - - - - Bill Adcock
 Vice-President - - - - - Dale Currence
 Secretary - - - - - Charles Banner
 Treasurer - - - - - James McKinley
 Sentinel - - - - - Bill Thorson
 Reporter - - - - -
 Sponsor - - - - - Clifford Greenway

FIRST ROW: Clyde Rea, Richard Thompson, George Hegg, Jerry Berkstresser, Billy Thorson, Robert Hurtabise, Charles Banner, Larry Posten, Clement Iven.
SECOND ROW: Wesley Bailey, Randall Kallenbach, Gene Mobley, Wayne Whittaker, Glenn Bellamy, Weldon Louvern, Ralph Adcock, Jerry Rowland, Billy Blankenship, Dale Currence, Eddie Teal, Albert Hegg, Donald Opie, Herschel Bond, Norman Bond, John Hull, Bobby Thorson, James Hicks.
THIRD ROW: Bill Adcock, Donald Thompson, Arnold Meyers, James McKinley, Billy Rush, John Smith, Gordon Goodrick.



Band



Mixed Chorus



TRUMPET TRIO
Donald Ham
James Herfurth
David Miller



DRUM MAJORETTE
Sandra Bear



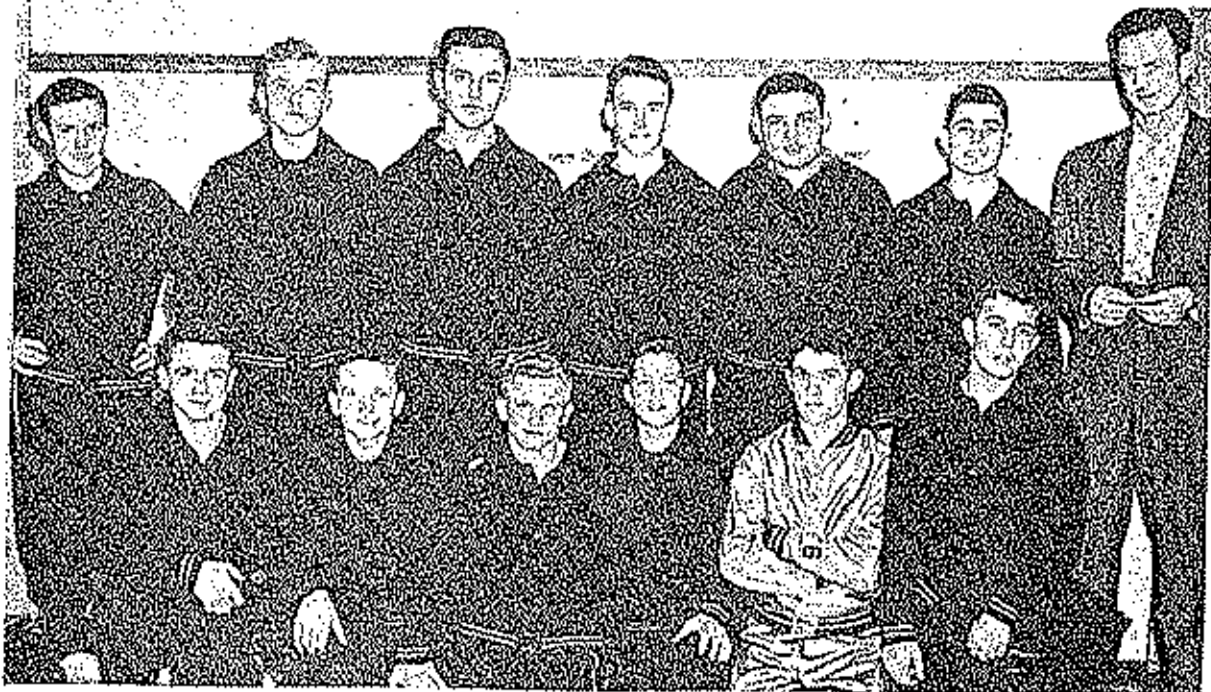
Activities

A Team



Phil Caer, Paul Simmons, Kenneth Keys, Paul Richardson, Robert Harvey, Walter Harvey, Leland McMillin, Albert Crum, Billy Simmons, Dwight Stread, Coach John Hyatt.

B Team

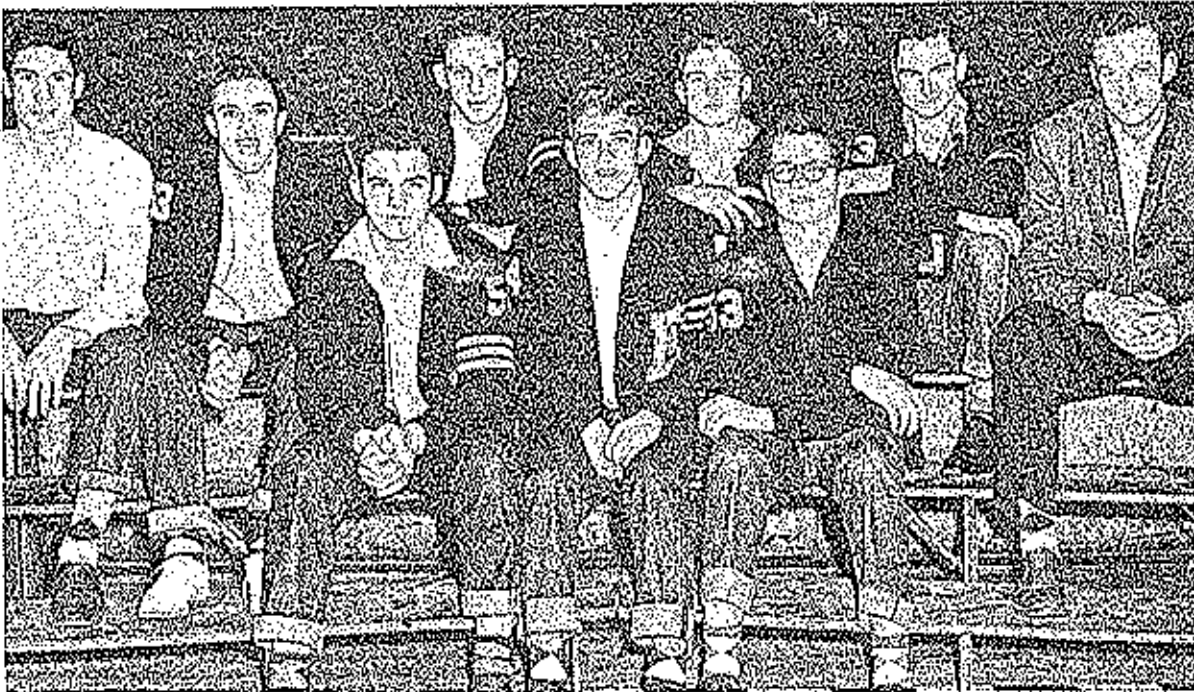


Frank Ruster, Donald Corrier, George Robinson, Donald Ham, Donald Thompson, Marvin Summers, James Herzfurth, Jerry Welch, Claude Hayes, Bill Houston, Bob Keagan, Tom Todd, Coach John Hyatt.

Pep Club



Helan Cooper - President, "A" Team Cheerleaders - Mary Jane Crum, Norton Amos, Katie Crusa, Sue Carr, Elsie Wienorann, "B" Team Cheerleaders - Barbara Cump, Ruby Wood, Ruth Clement, Elizabeth Taylor, Kay Atford, Sponsors - Mr. Drake, Miss Rogers,



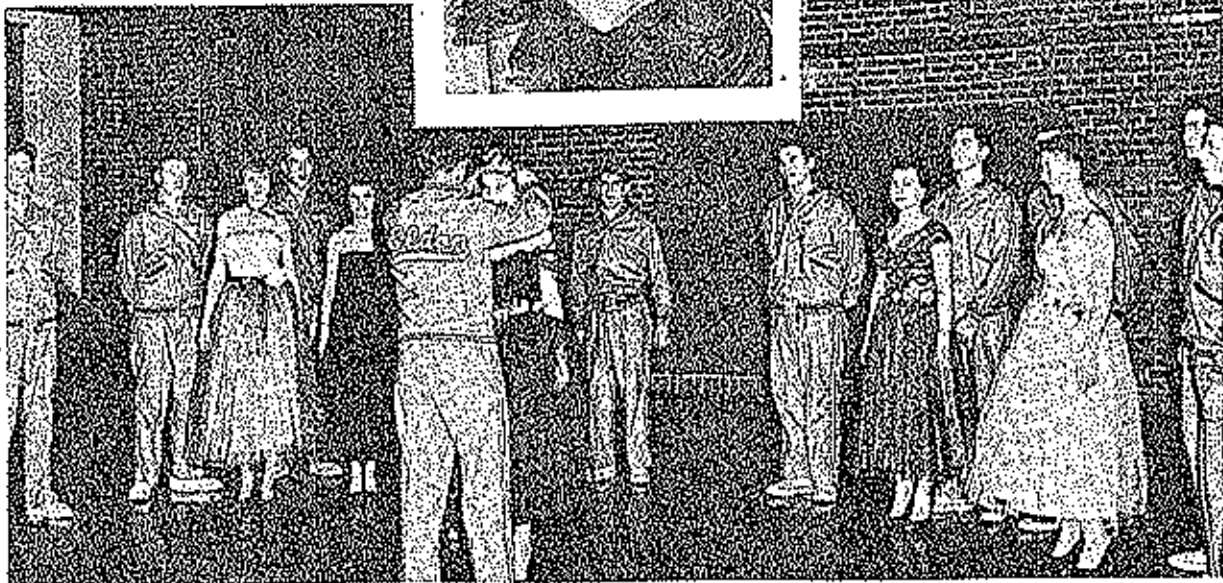
"E" Club

Sponsor - Mr. Hyatt, President - Bill Simmons, Kenneth Kays, Albert Crum, Bill Simmons, Leland McGillin, Phil Carr, Phil Retchel, Paul Richardson, Robert Watvey,



MAIDS
 Marilyn Barbour
 Janet Myers
 Betty Jo Watt
 Arlene Jenkins

HELEN COOPER
 Basketball Queen

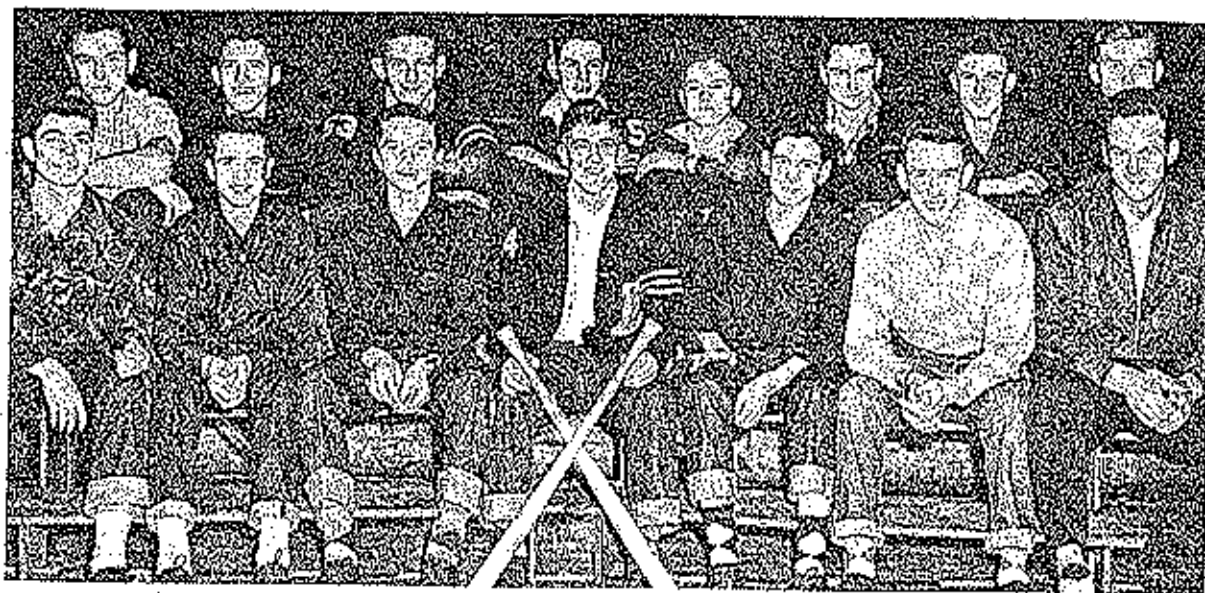


Junior Softball Team



Bob Bailey, Bill Rouse, Leroy Bacon, David Venpool, George Pace, Jerry W. Jones, Bill Houston, Harold Nichols, Edward Wortley, Charles Rogers, Claude Hayes, Bob Harrison, John Myatt - Coach.

Varsity Softball Team



George Robinson, Paul Simmons, Phil Kiechel, Bill Simmons, Paul Richardson, Robert Morvey, Charles Banner, Don Gortner, Marvin Summers, James Harforth, Ireland McMilla, Harry Chalmers, Don Kani, John Myatt - Coach.

Girls' Softball Jr. & Sr.



Loretta Cantwell, Helen Harvey, Alice Wise, Dorothy Hopkins, Margaret Cooper, Rosalya Thomson, Janice Green, Hazel Thomas, Marilyn Reichel, Nancy Hengstenberg, Betty Deffenbaugh, Mrs. Moore.



Barbara Gump, Connie Henderson, Elizabeth Taylor, Carolyn Brady, Joan Ham, Mary Anne Seelye, Wilma Bentler, Peggy Witten, Wanda Robbins, Mrs. Moore.

Varsity Volleyball Team



Loretta Cantwell, Alide Wise, Barbara Nees, Marilyn Reichel, Rosilyn Thomson, Arlan Jenkins, Hazel Thomas, Betty Deffenbaugh, Helen Harvey, Dorothy Hopkins, Nina Null, Martetta Young, Sue Rogers - Coach.

Freshman Volleyball Team



Myers Dunston, Thelma McKinney, Wanda Robbins, Kay Alford, Carolyn Brady, Bethel Coffman, Elizabeth Taylor, Sula Kehr, Barbara Gump, Deborah Holloway, Lillian Heldsloh, Sue Rogers - Coach.



F. F. A. Softball



F. F. A. Basketball