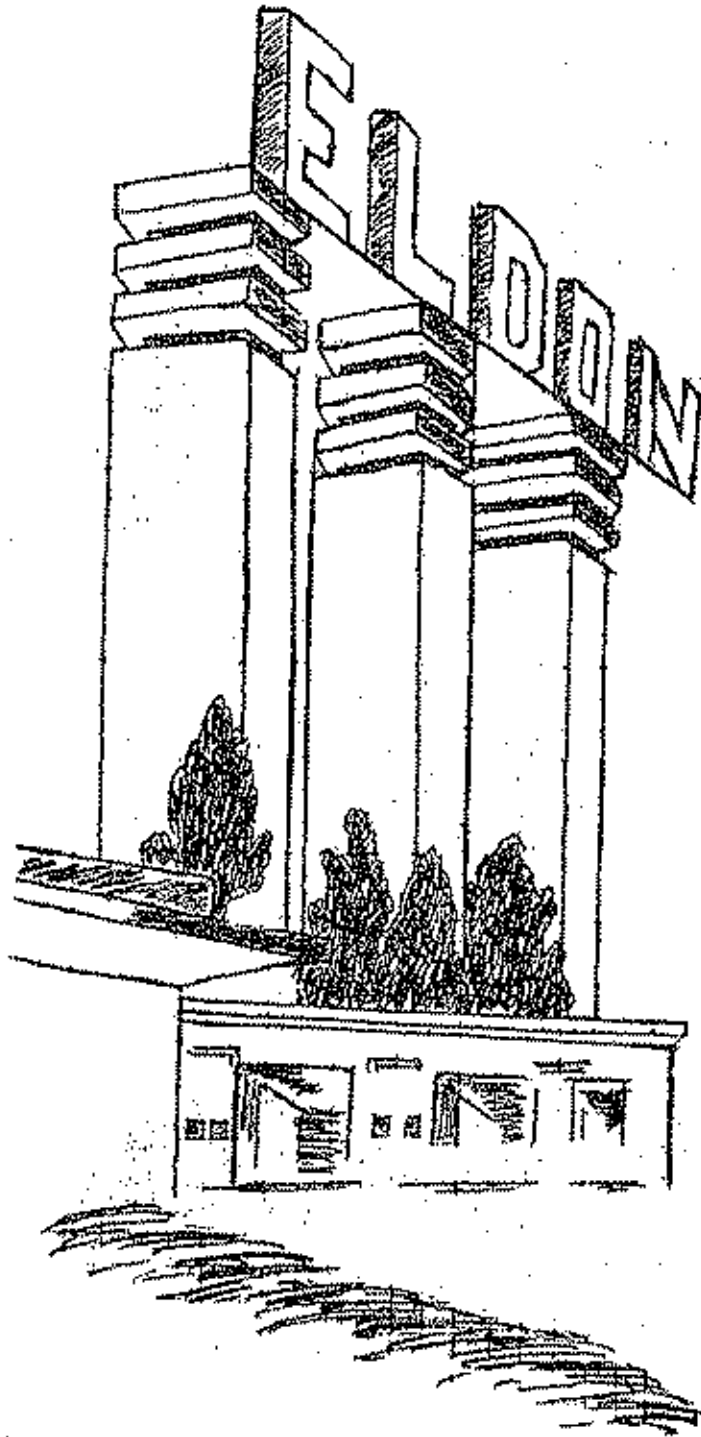
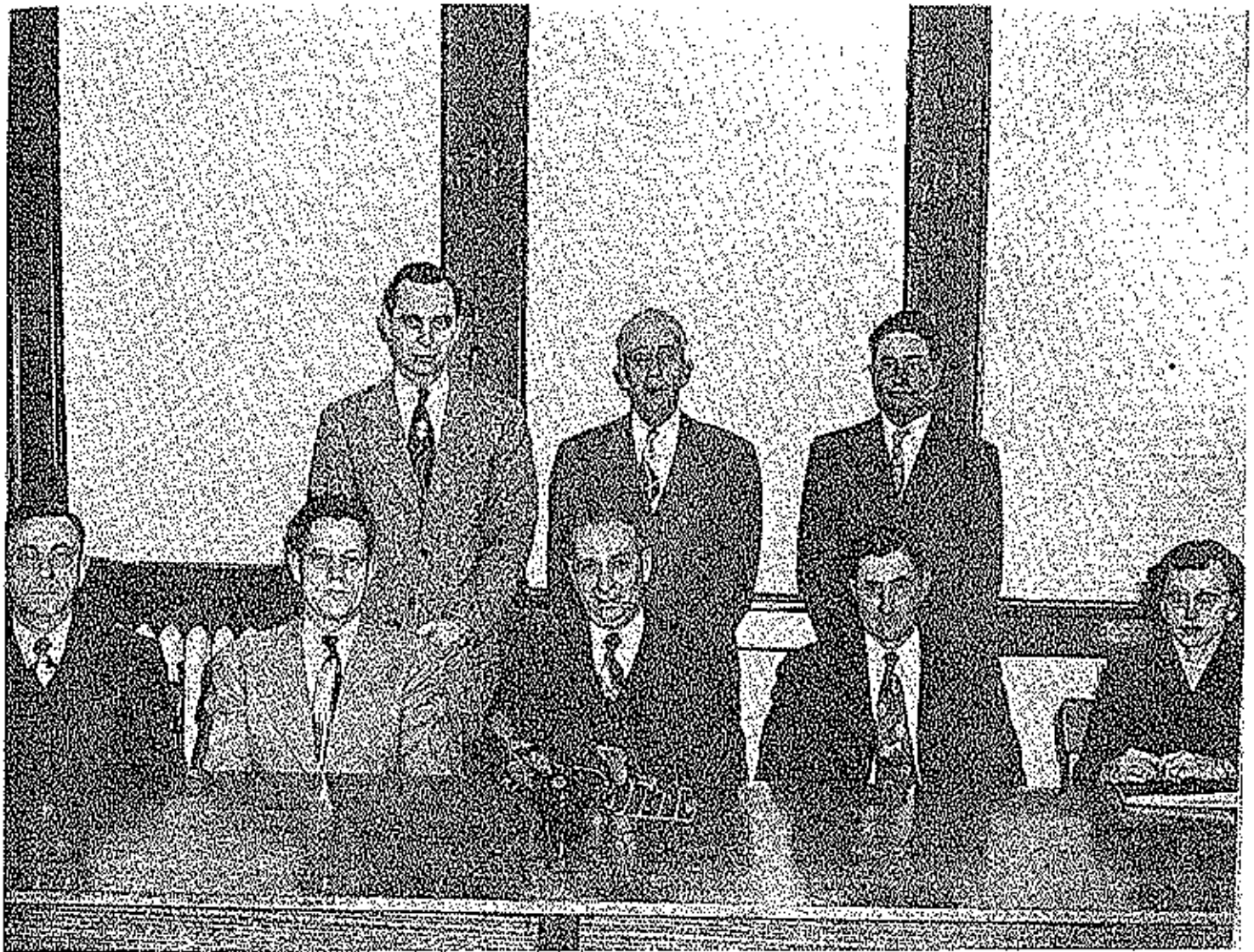


Dedication



If you uphold the traditions of E. H. S.
If you willingly give what service
you are capable of to your school,
If you are using the opportunities af-
forded you to fit yourself for lead-
ership in the world about you,
To you this book is dedicated ! ! !



Board of Education of Eldon Administrative Unit R-1

STANDING: Left to Right

Mr. B. W. Robinson, Superintendent

Mr. Ted Herfurth, Member

Mr. Dewey Jackson, Member

SEATED: Left to Right

Dr. Olney Shelton, Vice-President

Dr. Carl Almquist, Member

Mr. Fred Thornbrugh, President

Mr. Alton Hendricks, Member

Miss Maxine Henley, Secretary-Treasurer



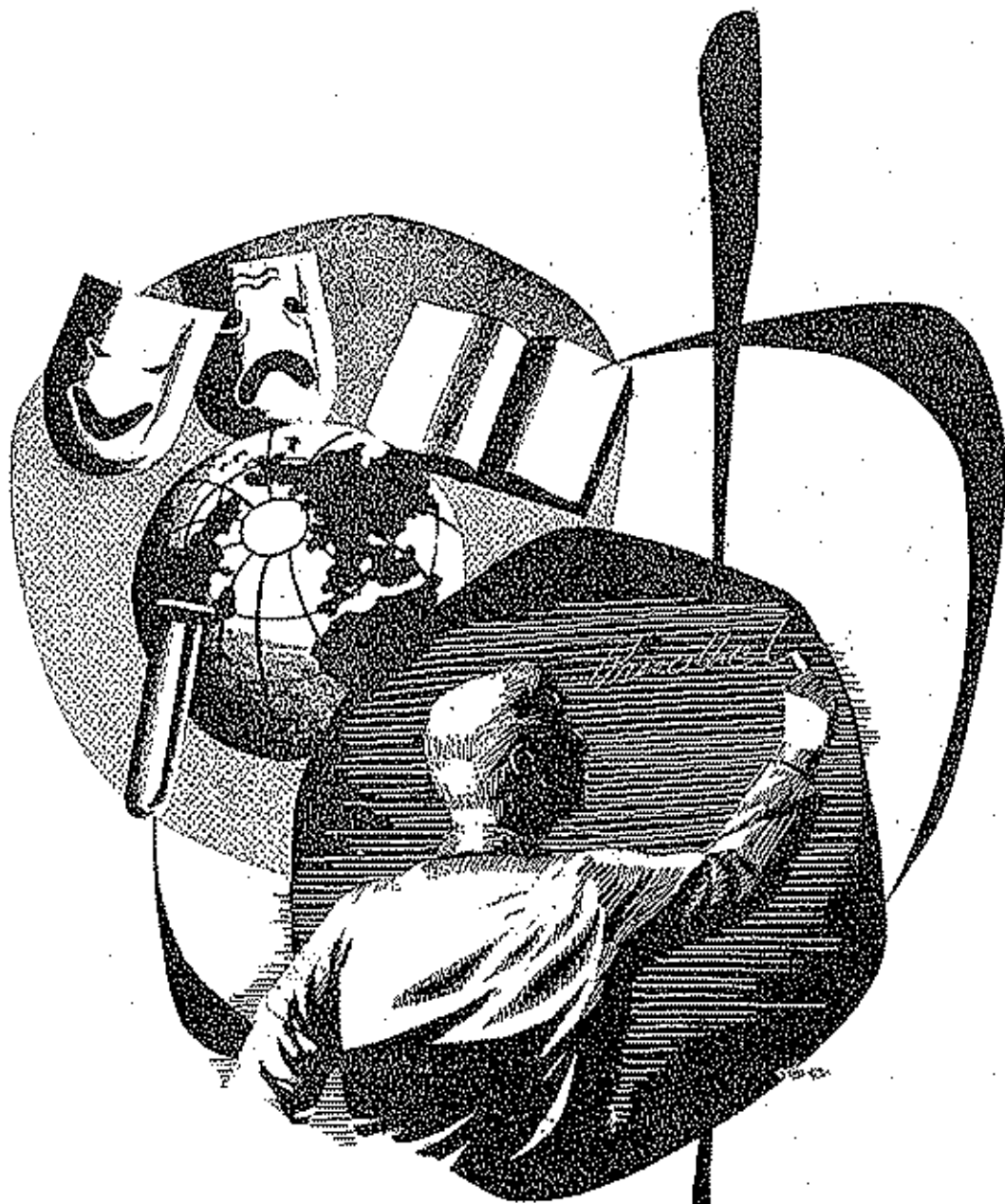
Superintendent - R. W. ROBINSON



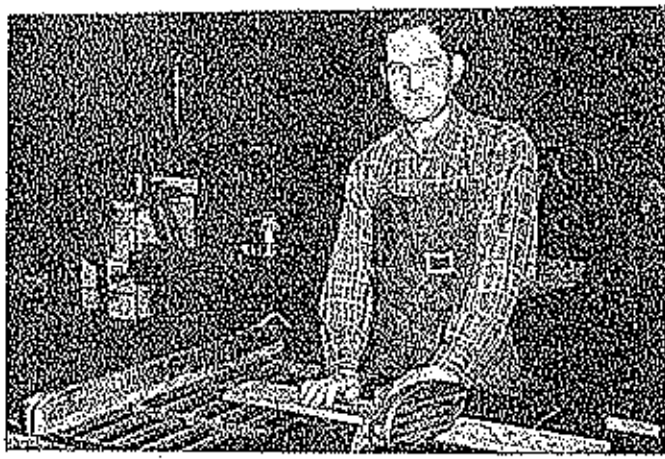
SECRETARY TO SUPERINTENDENT - MAXINE HENLEY

PRINCIPAL - B. R. COLLIER

SECRETARY TO PRINCIPAL - JEAN BLESCOE



FACULTY



INDUSTRIAL ARTS - MAX HUNTER



MUSIC - GERALDINE HALDIMAN



VOCATIONAL HOME ECONOMICS - GRETA CASE



VOCATIONAL AGRICULTURE - CLIFFORD GREENWAY



SCIENCE - WILLIAM STEVENSON



ENGLISH - JESSIE ATKINSON



COMMERCE - BURICE STEPHENS



LIBRARY - MARY LILLARD



CO-ORDINATOR - COUNSELLOR - FRANK DRAKE



ENGLISH - RUTH LUPARDUS



PHYSICAL EDUCATION - ELIZABETH JONES



COACH - HAROLD WEIK

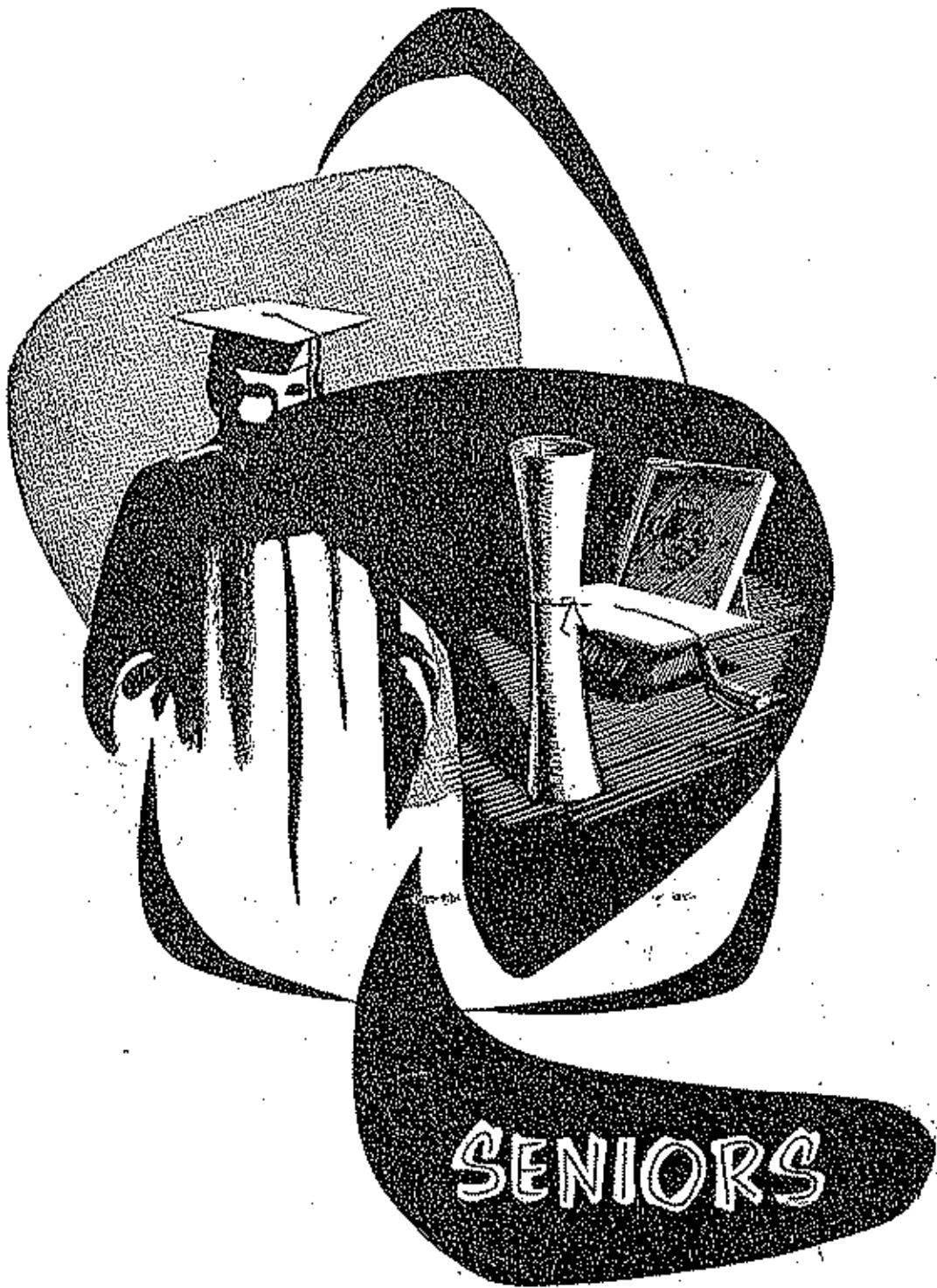


SOCIAL STUDIES - OLIVER STEPHENS
MATHEMATICS - FREDA LANE



WORLD HISTORY - ALICE BISHOP
SOCIAL STUDIES - JOHN DOWLER





SENIORS

PAUL SIMMONS

Speech and Dramatics Club 3; One-Act Plays 2, 3; Dramatics 3; Honor Society 1, 4; "E" Club 2, 3, 4; "E" Club Vice-President 3; Maroon and Gold Staff 2, 3, 4; Student Council 1, 2, 3, 4; Student Council Vice-President 3; National Student Council Convention 3; State Student Council Convention 3; President Sophomore Class 2; President Senior Class 4; Junior High Softball 1; Junior High Basketball 1; "B" Basketball 1; "A" Basketball 2, 3, 4; Varsity Softball 1, 2, 3, 4; Varsity Track 1, 2, 3, 4; State Track Meet 3.

JOAN BLAIR

Student Body Treasurer 4; Basketball Maid 4; Fall Festival Maid 2; Class Secretary 1; F. R. A. 1, 2, 3, 4; F. H. A. Secretary 3; Library 2, 3, 4; Library President 3; Junior High Volleyball 1; Senior High Volleyball 3, 4; Volleyball Intramurals 1, 2, 3, 4; Band 1; Speech 2; Monitor 3, 4.

AMY MARTIN

Missouri Girls' State 3; Honor Society 2, 3, 4; Honor Society Secretary and Treasurer 3; Referee Staff 2, 3, 4; Referee Editor 4; Band 1, 2, 3, 4; Mixed Chorus 1, 2, 3, 4; Girls' Glee Club 1, 2, 3, 4; Orchestra 1; Homecoming Queen 4; Secretary Junior Class 3; Vice-President Sophomore Class 2; Missouri All State Band 2; Jefferson City Symphony 3; Volleyball Intramurals 2; Junior High Softball 1; One-Act Plays 2; Speech and Dramatics 3; Pep Club 1, 2, 3, 4.

JERRY WELCH

Junior High Basketball 1; "B" Basketball 1, 2; "A" Basketball 2, 3, 4; Junior High Softball 1; Senior High Softball 2, 3, 4; Track 2, 3, 4; "E" Club President 4; Student Council 3, 4; Honor Society 2, 3, 4; Honor Society President 3; Projector Club 2, 3, 4; Band 1, 2, 3, 4; Chorus 1, 2, 3, 4; Chorus Vice-President 4; Boys' Glee Club 1, 2, 3, 4; Maroon and Gold Staff 3, 4; Senior Class Secretary 4.

**MARJORIE RUTH McDONALD**

Vice-President Freshman Class 1; Secretary Treasurer Sophomore Class 2; Secretary Treasurer Pep Club 3; Fall Festival Maid of Honor 1; Honor Society 2, 3, 4; Pep Club 1, 2, 3, 4; Maroon and Gold 4; Junior High Volleyball 3; Mixed Chorus 2; Girls' Glee Club 1, 2; Basketball Maid 4; Alternate for Girls' State 3.

MARVYN SUMMERS

Honor Society 2, 3, 4; Honor Society President 4; Student Council 1, 2, 3; Maroon and Gold Staff 3, 4; Maroon and Gold Sports Editor 4; "E" Club 2, 3, 4; Projector Club 2, 3, 4; Projector Club Vice-President 3; Junior High Basketball 1; "B" Basketball 1, 2; "A" Basketball 3, 4; Band 1, 2, 3, 4; Mixed Chorus 1, 2, 3, 4; Mixed Chorus Secretary 4; Boys' Glee Club 1, 2, 3, 4; Orchestra 2; Missouri Boys' State 3; Junior High Softball 2; Senior High Softball 2, 3, 4; Track 2, 3, 4.

**DONALD HAM**

Juniata High School 1; Orchestra 2; Band 2, 3, 4; Band Vice-President 3; Mixed Chorus 2, 3, 4; Mixed Chorus, Vice-President 2; Mixed Chorus, President 4; Boys' Glee Club 2, 3, 4; "B" Basketball 2; "A" Basketball 3, 4; Senior High Softball 2, 3, 4; Track 2, 3, 4; "E" Club 2, 3, 4; Honor Society 2, 3, 4; Honor Society, Secretary 4; Projector Club 2, 3, 4; Student Council 2, 3.

JIMMIE LOU CRIGLER

Queen of Popularity and Beauty 4; Student Body Secretary 4; Girls' State 3; Fall Festival Maid 2; Pop Squad 1, 2, 3, 4; Pep Squad President 3; Honor Society 2, 3, 4; Mixed Chorus 1, 2, 3, 4; Girls' Glee Club 1, 2, 3, 4; Maroon and Gold Staff 2, 3, 4; Maroon and Gold Art Editor 4; Speech and Dramatics 3; Dramatics 3; Freshman Treasurer 1; Junior High Volleyball 1; Intramurals 2, 4; Monitor 6; Honor Society President 4.



GEORGE ROBINSON

"E" Club 2, 3, 4; "E" Club Secretary-Treasurer 1, 4; Honor Society 2, 3, 4; Honor Society Vice-President 4; "A" Basketball 3, 4; "B" Basketball 1, 2; Track 1, 2, 3, 4; Softball 3, 4.

LOYCE REA

Band 1, 2, 3, 4; Honor Society 2, 4; Student Council 3, 4; F. H. A. 1, 2, 3, 4; F. H. A., President 4; F. H. A., District Parliamentarian 3; Maroon and Gold Typist 4; Hostess Club 1, 2; Hostess Club Vice-President 2; Basketball Maid 4; Fall Festival Maid 4; Volleyball Intramurals 3, 4.



RITA BOND

Pep Squad 4; F. H. A. 1, 2, 3, 4; F. H. A., Historian 3; Hostess Club 1.

GEORGE HART

Mixed Chorus 1, 2, 3; Boys' Glee Club 1, 2, 3; C. O. E. Vice-President 4; C. O. E. Club 4; Track 2, 3; Speech 3.

TRINA VILLIE

Girls' Glee Club 1, 2, 3, 4; Mixed Chorus 2, 3, 4; Pep Club 2, 3, 4; Pep Club President 4; Speech and Dramatics Club 3; Color Bearer 3; Basketball Maid 4.

DONALD GORTNER

Track 1, 2; Chorus 2, 3, 4; Projector Club, Vice-President 1, 2, 3, 4; "E" Club 3, 4; Senior High Softball 2, 3; Boys' Glee Club 2, 3, 4; "B" Basketball 2; Basketball, Intramurals 1, 4; Honor Society 1, 4.



JOHN B. MILLARD

Honor Society 3, 4; Projector Club 3, 4; Projector Club Secretary 4; Speech and Dramatics Club 3; Debates 3; "A" Basketball 4; Track 3; Intramurals 1, 2, 3; Booster Club 2.

SUE CAMDEN

Hostess Club 1; Speech and Dramatics Club 3, 4; Dramatics 3; One-Act Plays 3.



GARY NEWTON COOPER

School of the Orange 1, 2; Basketball 3, 4; Softball 3; Track 3; Band 3; Chorus 2; Speech 3, 4; C. O. E. 4.



LINDA ANN HAYNES

East High School, Kansas City, Missouri 1, 2; Pep Club 3, 4; Speech and Dramatics Club 3; Maroon and Gold Staff 4; Intramurals 3, 4; Fall Festival Maid 4.

DOROTHY HOLDT

Junior High Softball 1; Junior High Volleyball 1; Hostess Club 1, 2, 3, 4; F. F. A. 1, 2; Band 1, 2; Mixed Chorus 4; Senior High Volleyball 4; Senior High Softball 1, 4; Volleyball Intramurals 1, 2, 3, 4; Hostess Club, President 2; Hostess Club, Program Chairman 4; Hostess Club Vice-President 3; Monitor 3, 4; Girls' Glee Club.



TOMMY TODD

C. O. E. 4; C. O. E. President 4; Booster Club 3; Booster Club Vice-President 3; Band 1, 2, 3, 4; Band Secretary 3; Mixed Chorus 1, 2, 3, 4; Bler Club 1, 2, 3, 4; Speech and Dramatics 3, 4; Track 3, 4; "B" Basketball 2; Intramurals 1, 2, 3, 4; Junior High Softball 1.



FRANCES HIBDON

Band 1, 2, 3, 4; Speech Club 3; Hostess Club 1, 2; Orchestra 1, 2, 3, 4.

JAMES THEODORE HERFURTH

Junior High Softball 1; Junior High Basketball 1; "B" Basketball 1, 2; "A" Basketball 3, 4; Track 3, 4; President Freshman Class 4; President Junior Class 3; Sophomore Pilgrimage 2; "E" Club 3, 4; Honor Society 2, 3, 4; Projector Club 1, 2; Speech and Dramatics Club 3; Student Council 1, 2, 3, 4; President Student Council 4; Referee Staff 2, 3, 4; Business Manager Referee 4; One-Act Plays 3; State Student Council Convention at Maryville 3; Band 1, 2, 3, 4; Orchestra 2; Mixed Chorus 1, 2, 3, 4; Boys' Glee Club 1, 2, 3, 4; Boys' State 3.



JERRY DAN ROWLAND

Honor Society 2, 3, 4; F. F. A. 1, 2, 3, 4; F. F. A. Vice-President 3; F. F. A. President 4; F. F. A. Softball 1, 2, 3; F. F. A. Basketball 1, 2, 3; F. F. A. Judging Teams 3; Parliamentary Procedure Team 3; Student Council 4; Maroon and Gold Staff 2, 3, 4; Speech and Dramatics Club 3; Escort at Fall Festival 3; Intramurals 3, 4.

ALICE WISE

Junior High Softball 1; Pep Squad 1; Girls' Glee Club 1, 2; Senior High Softball 2; Speech and Dramatics 3; Dramatics 3; Volleyball, Senior High 2, 3, 4; Referee Staff 2, 3, 4; Art-Editor, Referee Staff 4.



GARY GUNN

Maroon and Gold Editor 4; Assistant Editor 3; Maroon and Gold Staff 2, 3, 4; Student Council Representative 4; Honor Society 2, 3, 4; Honor Society President 3; "E" Club 3, 4; Vice-President Junior Class 3; Vice-President Senior Class 4; Student Athletic Manager 3; Projector Club 2, 3, 4.

BETTY JEAN COX

Band 1, 2, 3, 4; Mixed Chorus 1, 2, 3, 4; Maroon and Gold Staff 4; Hostess Club 1, 2; Girls' Glee Club 1, 2, 3, 4.



KATHRYN FORRESTER

Junior High Volleyball 1; Volleyball Intramurals 1, 2, 3, 4; Pep Squad 4; P. H. A. 1, 2, 3, 4; Library 1, 2, 3; Band 1, 2; Hostess Club 1, 2, 3; Hostess Club Reporter 3.

PAUL MARTIN

Track 2; Intramurals 1, 2, 3, 4.

DARLENE JESTER

Junior High Volleyball 1; Senior High Volleyball 4; Intramurals 2, 3, 4; Library Club 2, 3, 4; Library Club, Vice-President 3; P. H. A. 1, 2, 3, 4; P. H. A., President 3; Hostess Club 1, 2; Hostess Club, Treasurer 2; Pep Club 1, 2, 3, 4; Maroon and Gold Staff 4; Mixed Chorus 2, 3, 4; Girls' Glee Club 2, 3, 4; Fall Festival Maid 1; Monitor 2, 3; Speech Contest 2; D. A. R. Citizenship 2.

GEORGE WALLIS

C. O. E. 4; Booster Club 3; Intramurals 2, 3, 4.



ALBERT HEGG

P. H. A. 1, 2, 3; "E" Club 1, 4; Projector Club 3, 4; C. O. E. 4; Speech Club 4; Track 3, 4.

PAULINE BOND

Volleyball 1; Volleyball Intramurals 1, 2, 3; Softball Intramurals 1, 2, 3; Library Club 3; P. H. A. 3, 4; P. H. A. Secretary 4; Fall Festival Maid 3; Monitor 3, 4.



DAN TAYLOR
C. O. E. 3; Booster Club 3; Intramurals 2, 3, 4.



DIANA JOYCE WALLACE
Mixed Chorus 2, 3, 4; Girls' Glee Club 1, 2, 3, 4; F. H. A. Vice-President 3; Pep Club 2, 3, 4; Monitor 2, 3, 4; Maroon and Gold Staff 4.

RUBY WOOD
F. H. A. 1, 2, 3, 4; Pep Squad 1, 2, 3, 4; Library 3; "B" Cheerleader 2; "A" Cheerleader 4; Volleyball Intramurals 1, 2.



SMITH BRUNER
Projector Club 3, 4; Projector Club President 4; Booster Club 3; Booster Club Secretary and Treasurer 3; Mixed Chorus 2, 3, 4; Boys' Glee Club 2, 3, 4; Intramurals 1, 2, 3, 4.



GEORGIA LEE BLACK
Orange High School 1; Glee Club 1; Pep Club 3, 4; Volleyball Intramurals 3, 4; Mixed Chorus 4; F. H. A. 2, 3, 4.

DONALD LEE OPIE
F. F. A. 1, 2, 3; C. O. E. 4; Projector Club 4; Secretary of Speech Club 4; F. F. A. Parliamentary Procedure Team 2, 3.



RANDALL KALLENBACH
F. F. A. 1, 2, 3, 4; Sentinel, F. F. A. 3; Intramurals 2, 3, 4.

LORENE BOND
Volleyball 1; Intramurals 1, 2, 3, 4; Library 3; F. H. A. 3, 4; F. H. A. Treasurer 4; Fall Festival Maid 3; Monitor 1, 4.



ARCHIE DALE OPIE
C. O. E. Club 3, 4.



VIVIAN DAVENPORT
Hostess Club 1, 2, 3, 4; Hostess Club, President 5; F. H. A. 4.



WANDA BORCHERING
Fulton High School 1, 2; Pep Club 3, 4; Speech and Dramatics
3; Debate 3.



RALPH ADCOCK
F. F. A. Secretary 3; F. F. A. Vice-President 4; F. F. A. Bas-
ketball 1, 3; F. F. A. Solis Judging Team 3; Intramurals 1, 3;
Speech Club 4; Junior High Basketball 1.

OPAL LOUISE LEHR
F. H. A. 4; Volleyball, Intramurals 2, 3, 4; Hostess Club 1;
C. O. E. Club 3.



OAIL WORKMAN
Intramurals 3; C. O. E. 4.

JESSE HADER
Projector Club 3, 4; Band 1.



CAMRELL SULLENS
Speech and Dramatics 3; Intramurals 3.

BERNARD EDWARD JAMES
C. O. B. Club 3, 4.



CATHERINE LOUISE IVEN
Band 1; Glee Club 2; Intramurals 2; Library Club 2; F. H. A.
2, 3, 4; Hostess Club 1, 2.

WILMA SNYDER HAGER
Hostess Club 1, 2; Glee Club 1, 2, 3, 4.



DONALD THOMPSON
F. F. A. 1, 2, 3, 4; F. F. A. Reporter 2; F. F. A. Treasurer 3;
Junior High Softball 1; Junior High Basketball 1; Senior High
Softball 3, 4; "B" Basketball 2; "A" Basketball 4; Booster
Club 3; F. F. A. Basketball 1, 3; F. F. A. Softball 1, 3; Intra-
murals 1, 3; "E" Club 3, 4; Speech 4.



WANDA BAGUET
F. H. A. 2, 3, 4; Monitor 3, 4; Speech Club 4.

LEONARD WATTS
Speech Club 4; Speech Club Treasurer 4; Intramurals, Bas-
ketball 3, 4.



WESLEY BAILEY
F. F. A. 1, 2; Intramurals 3, 4; Speech 4.

WILMA BEDWELL
Prep Squad 1.

DAVID NICHOLS
C. O. E. 3, 4; Intramurals 1, 2, 3, 4.



CAROL COX
Mixed Chorus 1, 2, 3, 4; Girls' Glee Club 1, 2, 3, 4; Band 1, 2, 3, 4; Band Librarian 2, 3; Speech and Dramatics 3, 4; C. O. E. Secretary 4; Speech 1, 4; Volleyball Intramurals 1, 2.

BERTHA DELORES STONE
Junior High Volleyball 1; Senior High Softball 4; Volleyball Manager 4; Softball Manager 4; Volleyball Intramurals 1, 3, 4; Softball Intramurals 1, 2; F. H. A. 1, 4; F. H. A., Reporter 4; F. H. A., Historian 4; Hostess Club 2; Monitor 4; Library Club 1, 2, 3.



JIMMY JONES
Roster Club 3; Senior High Softball 4; Softball Intramurals 1, 2; Basketball Intramurals 1, 2, 3, 4.



DONNA KIDWELL
Mixed Chorus 1, 2, 3; Girls' Glee Club 1, 2, 3; Band 1, 2, 3, 4; Band Librarian 2, 3; Orchestra 2, 3; F. H. A. 1, 2, 3, 4; F. H. A., Pianist 2, 3, 4; Hostess Club 1; C. O. E. Club 4.

EDWARD TEAL
F. F. A. 1, 2; C. O. E. Club 4; Speech Club 4.



JIMMIE LAUGHLIN
F. F. A. 3.

BEVERLY MURPHY
Pep Squad 1, 2, 3, 4; Library 1, 2; Senior High Softball 2, 3; Senior High Volleyball 1; Speech and Dramatics Club 3; Intramurals 3; F. H. A. 1.



DAVID HAHN
C. O. E. 4.



HELEN ZARKOS
Jefferson City Senior High 1, 2, 3; Senior Volleyball 4; Volleyball Intramurals 4.



HAZEL THOMAS
Speech Club 4; Junior High Softball 1; Senior High Volleyball 2, 4; Senior High Softball 2, 3, 4; Pep Club 1, 2, 3, 4; F. H. A. 1, 2, 3, 4.



CECIL L. SEARS
Chorus 1, 2, 3, 4.

BONNIE WILSON
F. H. A. 3, 4; Pep Club 2, 3, 4; Library Club 2, 3, 4; Library Club, Treasurer 3; Volleyball Intramurals 2, 3; C. O. E. 4; Speech Club 4.



NORMAN LEE BOND
"E" Club 3, 4; Track 3; F. F. A. 1, 2, 3; Projector Club 3, 4; Mixed Chorus 1, 2, 3, 4; Boys' Glee Club 1, 2, 3, 4.



FRANK BUSTER
C. O. E. 1, 4; "B" Basketball 2; "A" Basketball 4.



KATHRYN AHART
Junior High Softball 1; Speech and Dramatics 2, 3; Pep Club 2, 3; Intramurals 3.





PETE CENTELLA

DONALD CARROLL
Speech Club 4; Intramurals 1, 2, 3, 4.



RUTH SILVEN HARRISON
Speech and Dramatics Club 3.

JERRY JONES
Intramurals 1, 4; Booster Club 3; C. O. E. Club 4.

LEONARD E. WOOD
Intramurals, Softball and Basketball 1, 2, 4; C. O. E. 3.



BILLY BLANKENSHIP
F. F. A. 1, 2, 3, 4; Softball Intramurals 1; Speech Club 4.

EDDIE LEE STEWART
Bedford High School, Iowa 1, 2, 3;
Speech Activity 4; Basketball 1, 2,
3, 4; HI-Y 2.



LEROY THOMAS
C. O. E. 3, 4; Speech Club 4.

ROBERT THORSON
F. F. A. 1, 2, 3, 4.



Let us help you

You be the Judge

SENIORS

Always at your service

CLEAN

INTEGRITY

DIGNITY





UNDERGRADS

FRESHMEN

FULLOPEP

Nothing could be finer

Mountain

Service

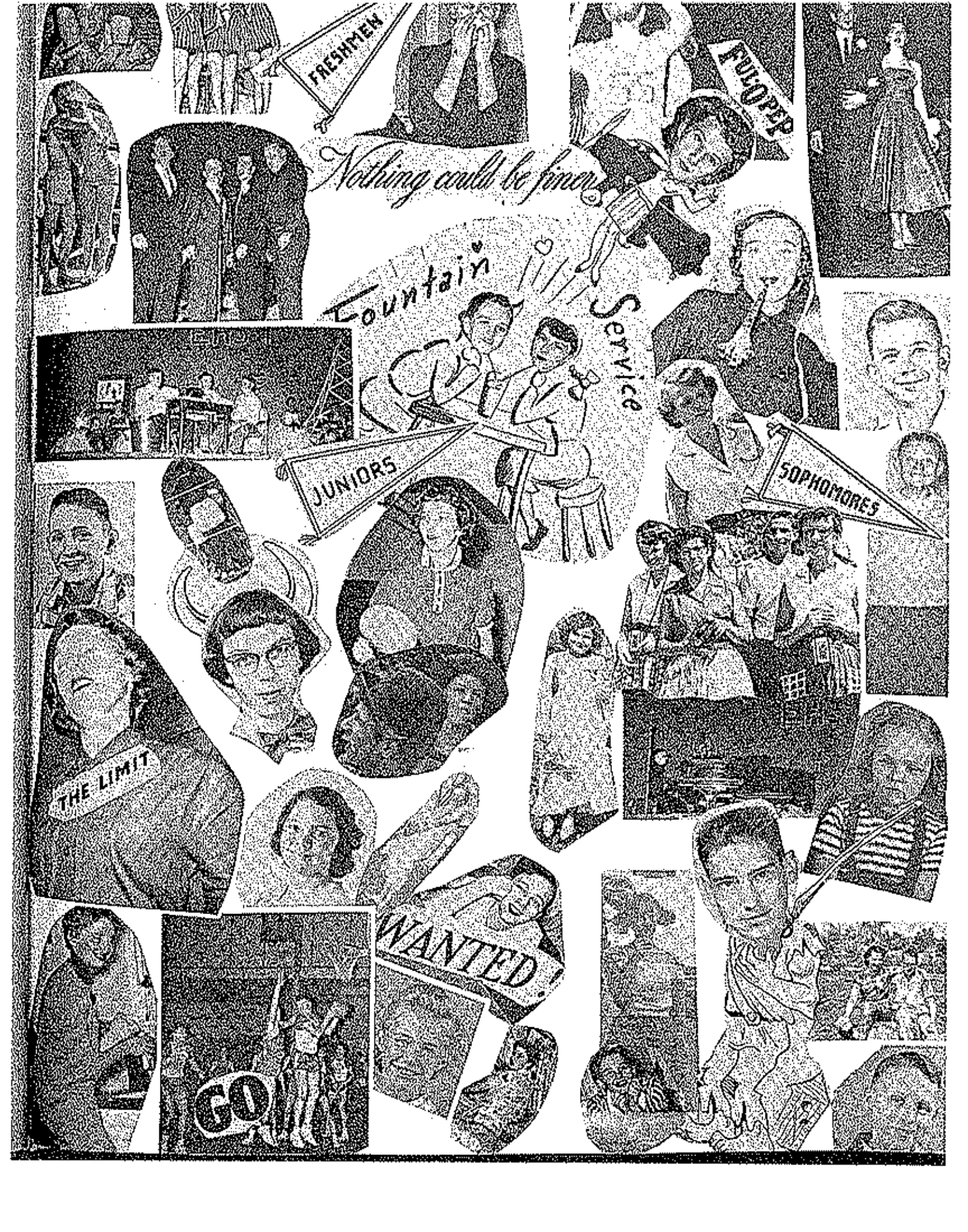
JUNIORS

SOPHOMORES

THE LIMIT

WANTED!

GO!



Juniors

President Dorothy Sanner

D. SANNER
G. PAGE

Vice-President Bob Regan

Secretary-Treasurer . . Carolyn Brady



K. MORGAN
J. TAYLOR
J. BROWN
D. HOLLAND



B. REGAN
D. STARLING
A. KARLEN
R. BOND



J. COMER
G. BELLAMY
L. BACON
V. THOMSON



M. NICKERSON
C. HENDERSON
D. COLLIER
J. HICKS





S. POPE
D. MCGINLEY
B. BAILEY
C. MILLER



D. BOND
D. GRAHAM
L. FONES
R. THOMSON



M. DUNSTAN
J. WHITE
W. WHITTAKER
C. HICKS



E. WORTHY
A. BROWN
E. TAYLOR
G. ALDERMAN



L. HELDSTAD
G. HAMMOND
G. MEYER
C. BRADY

D. RANUM
 R. WALKER
 R. MAHER
 J. JONES



B. COFFMAN
 C. HAYES
 G. MOBLEY
 T. MCKINNEY



C. STEPHENS
 G. ROARK
 W. ROBBINS
 C. ROGERS



O. ACEE
 G. TUCKER
 J. VANPOOL
 P. SNODGLASS



B. ROUNTON
 D. HYMER
 R. CLEMENT
 R. BAILEY





S. HUNT
J. CARLOCK
C. HICKS
W. BEALIE



P. BERENDSON
M. BLACK
C. KEITH
C. HEGG



K. ALFORD
G. NICHOLS
C. REA
S. GUMP



J. BERKSTRESSER
N. BASKONE
S. REYNOLDS
C. GOODRICK



A. WATT



Sophomores

President Harold Nichols

H. NICHOLS
N. BAKER

Vice-President Albert Graham

Secretary-Treasurer . . Rita Gamphor



B. GERHART
L. AGEK
A. GREEN
C. DAVIDSON



M. SEELEY
C. JENKINS
T. WOOD
P. REGAN



S. HUTCHISON
S. APPERSON
M. CONDO
J. CROWN



R. GAMPHOR
H. APPERSON
A. GRAHAM
J. KNERNSCHIELD





R. KEEFER
N. PEARON
J. HAM
J. FORRESTER



S. CARLOCK
B. WYRICK
E. TAYLOR
C. MAHER



E. WHITTENBURG
M. BLANKENSHIP
D. BOYD
L. HICKS



A. BEARD
F. BROWN
W. WHITENER
N. SCOTT



B. MAY
B. ALBERTSON
J. ADMIRE
M. HICKEY

S. BOND
L. WORTHY
C. HAYNES
J. MURRELL



C. SANDERS
R. APPERSON
R. RONYAN
D. KAYS



R. FINLEY
K. THOMAS
B. WILLIS
V. DAVENPORT



F. LOVING
A. MEYER
D. COFFMAN
L. SCOTT



M. ENLOE
A. MORLOCK
V. BUNCH
B. GRAHAM





M. MAHER
D. BARKER
A. DILSE
C. VERNON



S. MORGAN
G. BOMMER
M. FRYER
S. TWITCHEL



M. ALDERMAN
J. TODD
J. TODD
J. MEYER



J. THOMPSON
F. MARTIN
J. CHALMERS
G. WORKMAN



M. CONDO
R. KIDWELL
E. HEES
R. KERR

C. BELL
L. RAY
L. CORNETT
R. REYNOLDS



J. WETZEL
P. COOPER
D. BROWN
C. MILLS



A. BOND
O. MEYER
M. BRANSTETTER
B. EVANS



N. BARNHART
M. WOOD
B. PORTER
H. COOPER



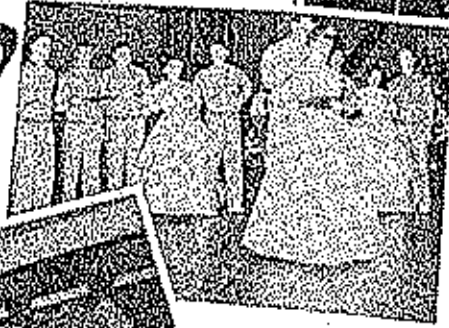
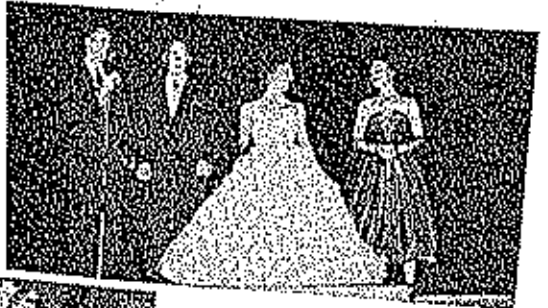
J. HOUSTON
L. DUNCAN
B. POLLY
D. ROLDT





D. ROWSER
S. BANNER
M. COOPER
C. GARDNER

SCRAPS



Freshmen

President Pete Gatterner
 Vice-President John Campbell
 Secretary-Treasurer Betty Denny

P. GATTERNER
 P. CALLISON



J. WELLS
 P. MARTIN
 B. PROCTER
 B. JACKSON



J. REYNOLDS
 L. THOMAS
 B. KIDWELL
 H. MCKINLEY



J. RUSH
 D. THOMAS
 P. SEARS
 B. SCOTT



J. STONE
 R. BROWN
 T. THORSON
 A. HICKS





W. SCOTT
J. CONLON
L. PAGE
N. ENLOE



E. EHLERTS
H. CURRUNCE
L. GAMPHER
L. HICKEY



J. WALLIS
J. MAHER
J. CUNNINGHAM
G. CAMDEN



D. STEENBURGEN
T. HOWSER
C. CARROLL
R. PYLES



L. DEAN
S. SANDERS
L. TRAMMELL
D. GARVEY

B. APPERSON
D. REFD
K. HAYES
A. JACKSON



K. WHITTEN
J. STARK
J. GRAY
J. CAMPBELL



L. RANUM
J. HAMMOND
D. HOWREN,
N. AHART



D. KEHR
B. DENNY
K. KAYS
J. BELSHE



H. KOETTING
N. BASHORE
D. VAUGHAN
B. LAUGHLIN





S. TUCKER
B. COOPER
J. PARKHURST
B. GREEN



R. HUNT
R. AMOS
N. HELMS
O. JEFFRIES



B. DINWIDDIE
D. LAKE
F. CLARK
S. DAVIES



H. CORTNER
J. GARTIN
J. DYER
F. SCRIVNER



B. KOETTING
J. HAYNES
C. RIFFLE
A. GALHOON

S. LUKE
B. MENGUS
C. CATRON
O. MUSICK



L. SCHUSTER
G. WITT
C. WOOD
S. ABERCROMBIE

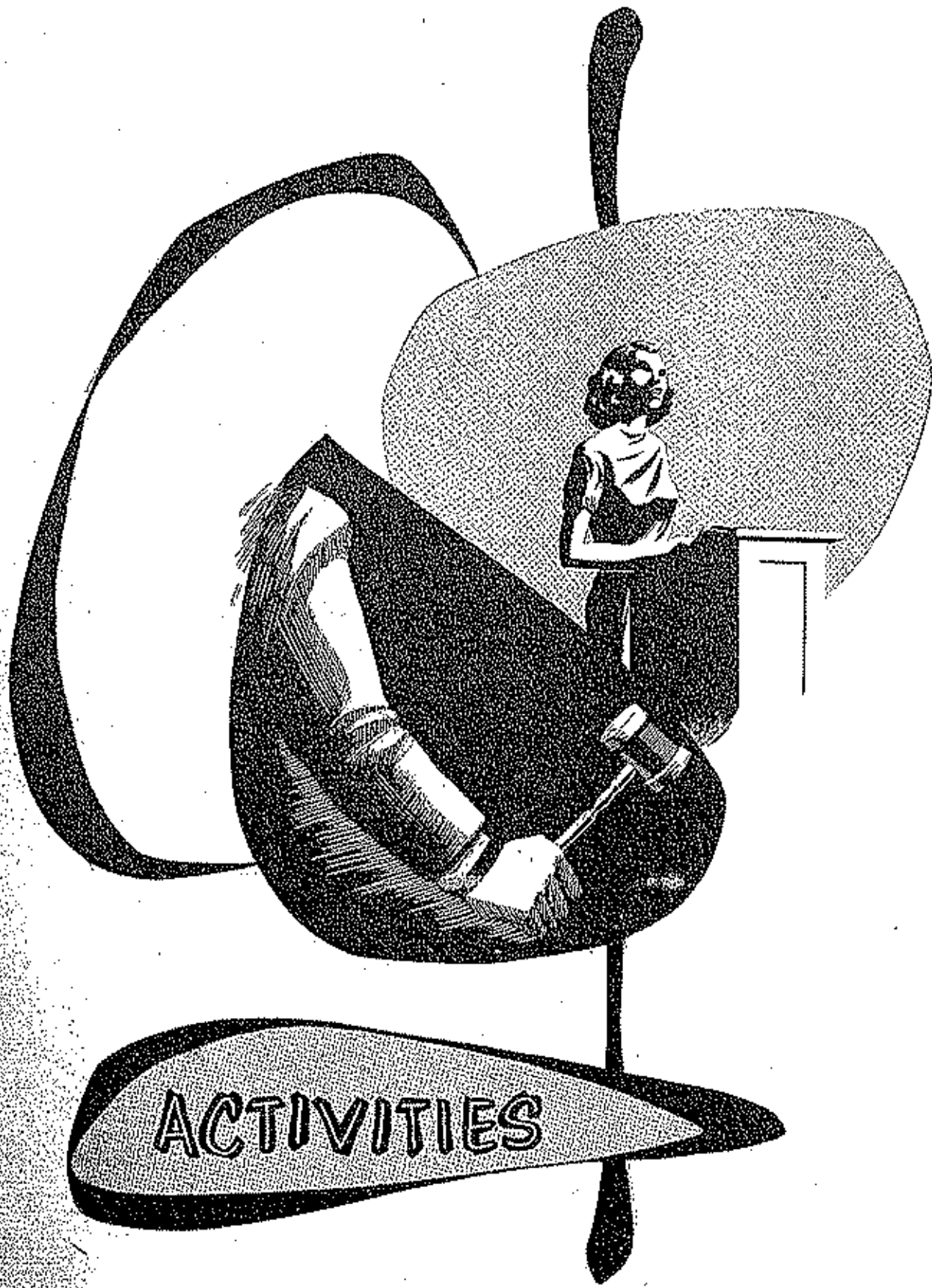


I. ALDERMAN
J. THORSON
F. CHAPMAN
P. JONES



D. SMALL
G. BOWMAN
F. SCOTT





ACTIVITIES



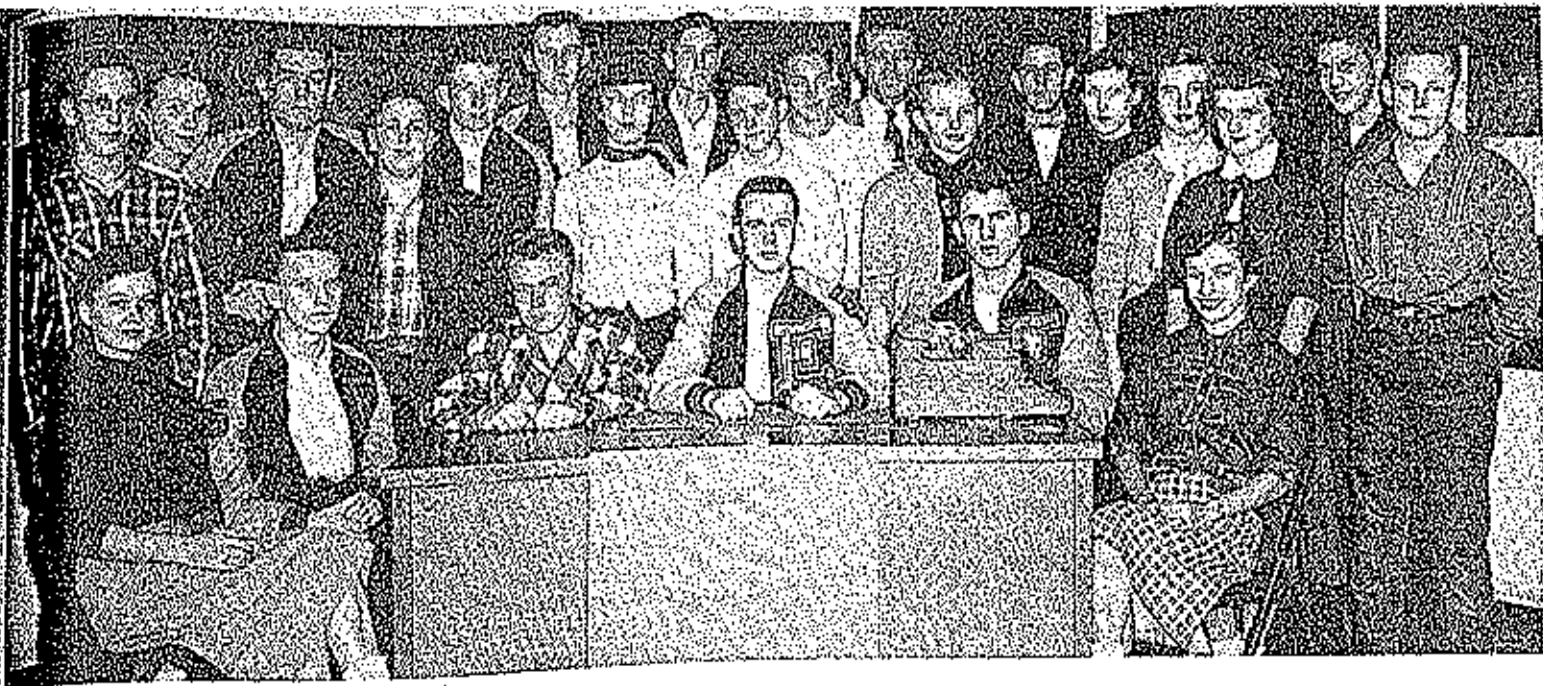
Referet Staff

STANDING: Mrs. Oliver Stephens, Carolyn Brady, Ann Beard, Steve Hutchison, Carl Stephens, Judy Murrell, Gene Mobley, Mrs. Freda Lane. SEATED: Alice Wise, Amy Martin, James Herfurth.



EDITOR -- AMY MARTIN

- Assistant Editor Carl Stephens
- Art Editor Alice Wise
- Assistant Art Editor Carolyn Brady
- Business Manager James Herfurth
Steve Hutchison
Ann Beard
Judy Murrell
Gene Mobley
- Sponsor Mrs. Freda Lane
- Co-Sponsor Mrs. Oliver Stephens



Student Council



PRESIDENT
JAMES HERTZ



TREASURER
JOAN BLAIR



SECRETARY
JIMMIE LOU CRIGLER



VICE-PRESIDENT
CHARLES ROGERS



Maroon and Gold

STANDING: B. R. Collier, Elizabeth Taylor, Linda Haynes, Gordon Davidson, Rita Gampher, Robin Keiffer, Jerry Welch, C. F. Haynes, Myrna Dusan, Jimmie Lou Crigler, Lillian Heldstab, Ruth Clement, Francis Loving, Mary Anne Seeley, Pat Regan, Patsy Snodgrass, Jerry Rowland, Loyce Res, Diana Wallace, Betty Cox, Darlene Jester, Mrs. Stephens, Mrs. Lupardus. SEATED: Ann Karlen, Paul Simmons, Marvin Summers, Gary Gunn, Dorothy Sanner, Kay Alford, Marge McDonald.

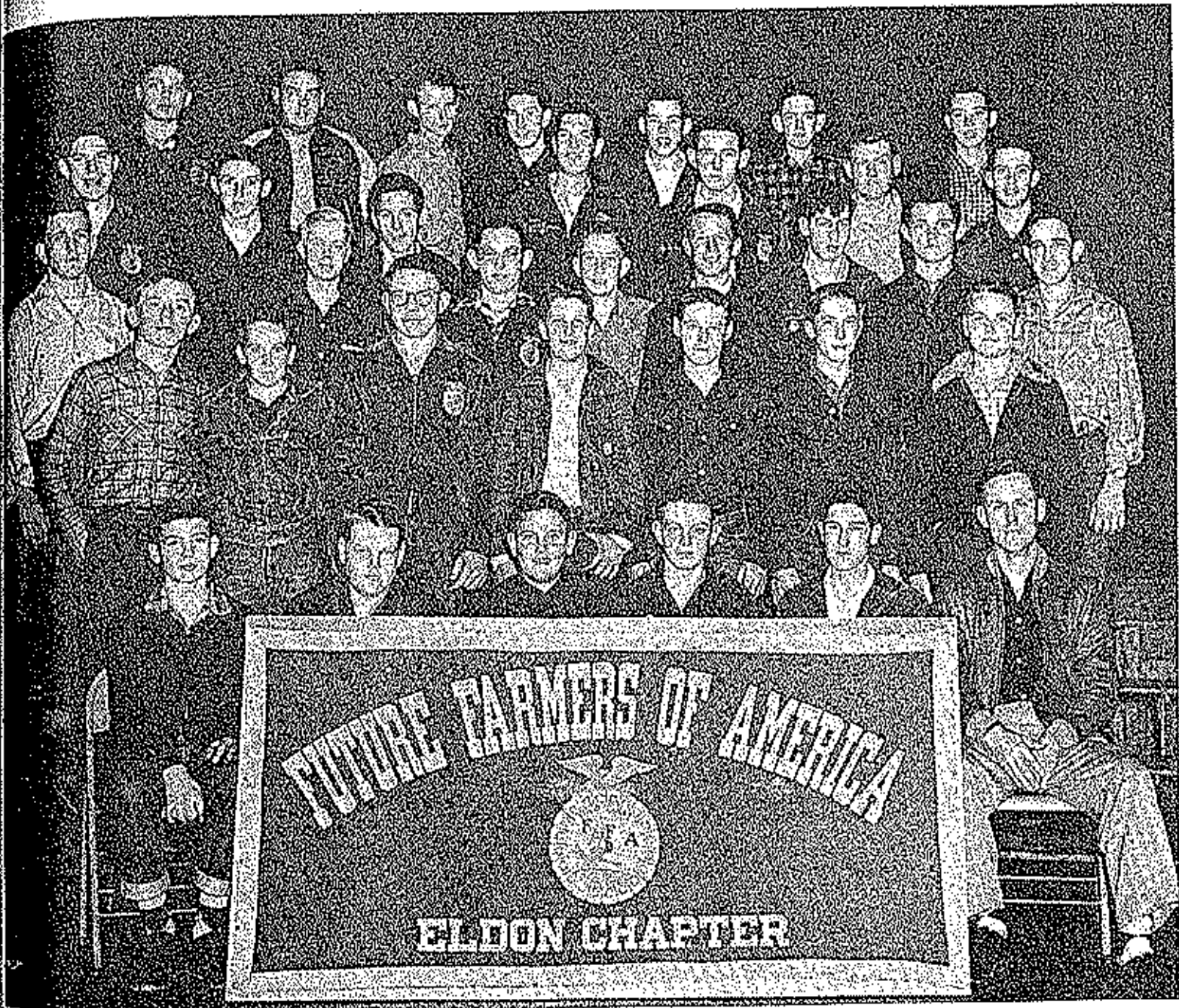


GARY GUNN Editor

Masthead

Assistant Editor Dorothy Sanner
 Printer Paul Simmons
 Feature Editor Ann Karlen
 Sports Editor Marvin Summers
 Scandal Editor Kay Alford
 Art Editor Jimmie Lou Crigler
 Head Reporter Jerry Rowland
 Business Manager Ruth Clement
 Head Typist Marge McDonald
 Mrs. Lynn Lupardus
 Sponsors Mrs. Oliver Stephens
 Mrs. B. R. Collier

F. F. A.



FIRST ROW: Bill Kidwell, Charles Wood, George Riffle, Sammy Banner, Jerry Rowland, Sponsor Clifford Greenway. SECOND ROW: B. Thorson, Bob Cooper, Leroy Dean, Jimmie Rush, Robert Scott, James Thorson, Freddie Brown. THIRD ROW: Jimmie Martia, Tommy Howser, David Currence, J. Thorson, John Campbell, G. Goerick, M. Branstretter, B. Blankenship. FOURTH ROW: D. Carvey, D. Lake, M. Maher, J. Berkstesser, R. Adcock, R. Kallenbach, J. Hicks. FIFTH ROW: D. Small, D. Thompson, L. Scott, C. D. Vernon, G. Gampher, G. Bommer, L. Gampher.

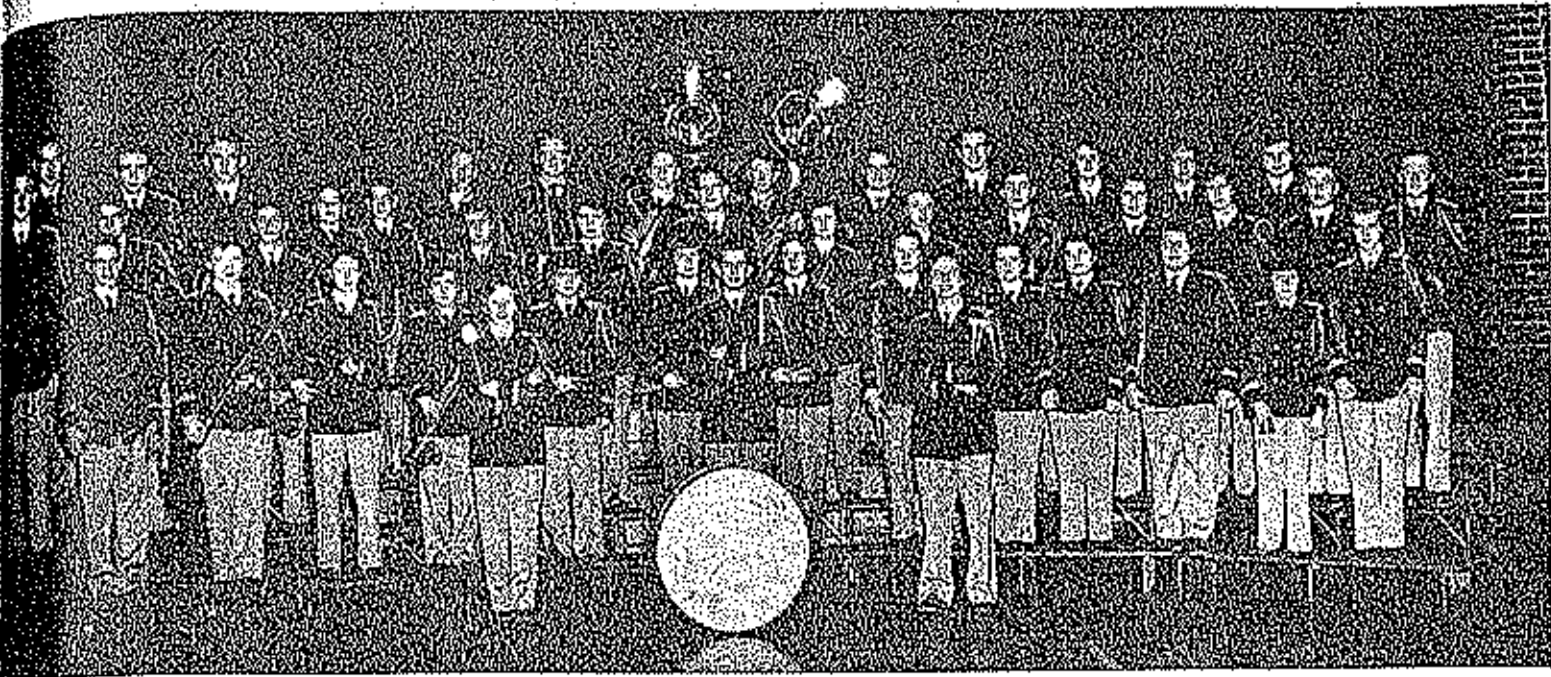


Library Staff

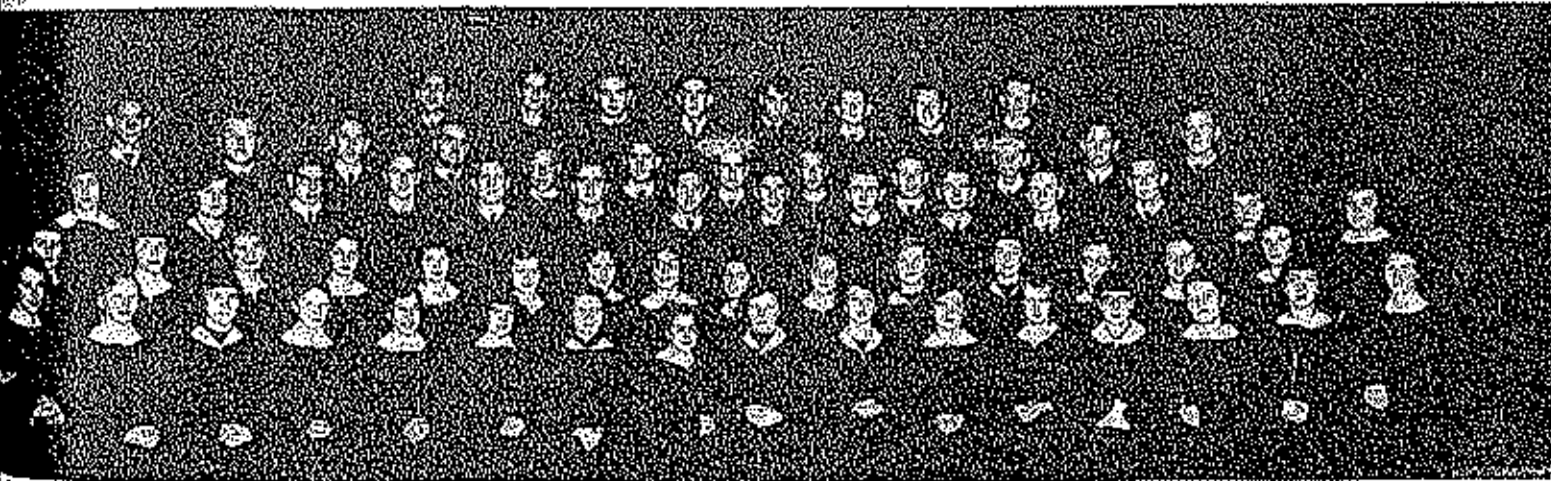
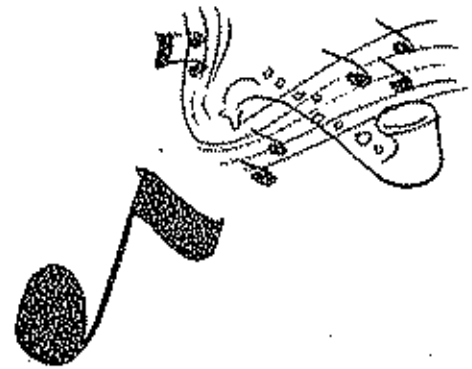
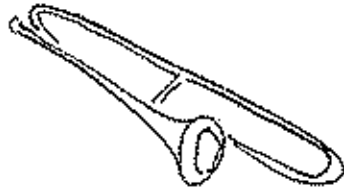
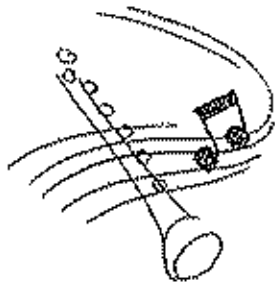


Projector Club





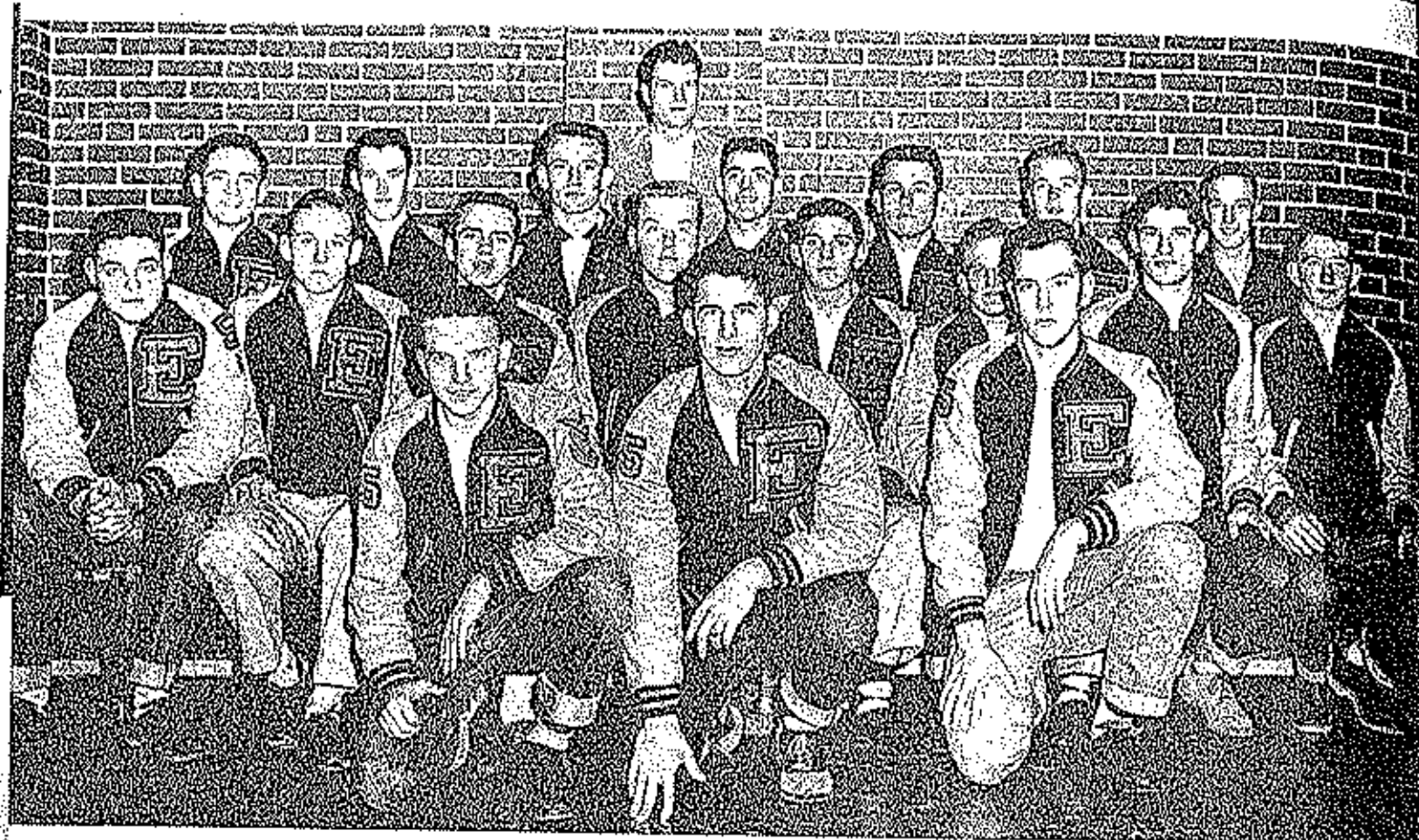
EHS Band



EHS Chorus

President	Don Ham
Vice-President	Jerry Welch
Secretary-Treasurer	Marvin Summers
Librarians	Anneta Jackson Linda Hickey





"E" Club



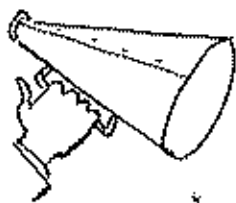
Pep Squad

"A" TEAM CHEERLEADERS

Barbara Gump, Ruby Wood, Ruth Clement, Rita Gamphor, Kay Afford,

"B" TEAM CHEERLEADERS

Joan Ham, Jlee Conlon, Sonja Tucker, Neva Pearson, Pat Gallison.





C. O. E. Club

Sponsor Frank Drake
 President Tommy Todd
 Vice-President George Hart
 Secretary-Treasurer Carol Cox
 Reporter Leroy Bacon

FIRST ROW: Jerry Jones, Jerry Carlock, Gail Workman, Leroy Thomas, Donald Bond, Jerry W. Jones, Jimmie Taylor, Gary Cooper, George Hart. SECOND ROW: Mr. Drake, George Pace, Eddie Teal, Leroy Bacon, Richard Thomson, Edward Worthey, Tommy Todd, David Nichols, Carol Cox, Frank Buster, Bonnie Wilson, Eddie James, Albert Hegg, Donald Ranum, Archie Opie, Donald Opie. ABSENT: George Wallis, Donna Kidwell, Gary Tucker, David Hahn.



MARVIN SUMMERS - President



GEORGE ROBINSON - Vice-President



DON HAM - Secretary-Treasurer



Honor Society



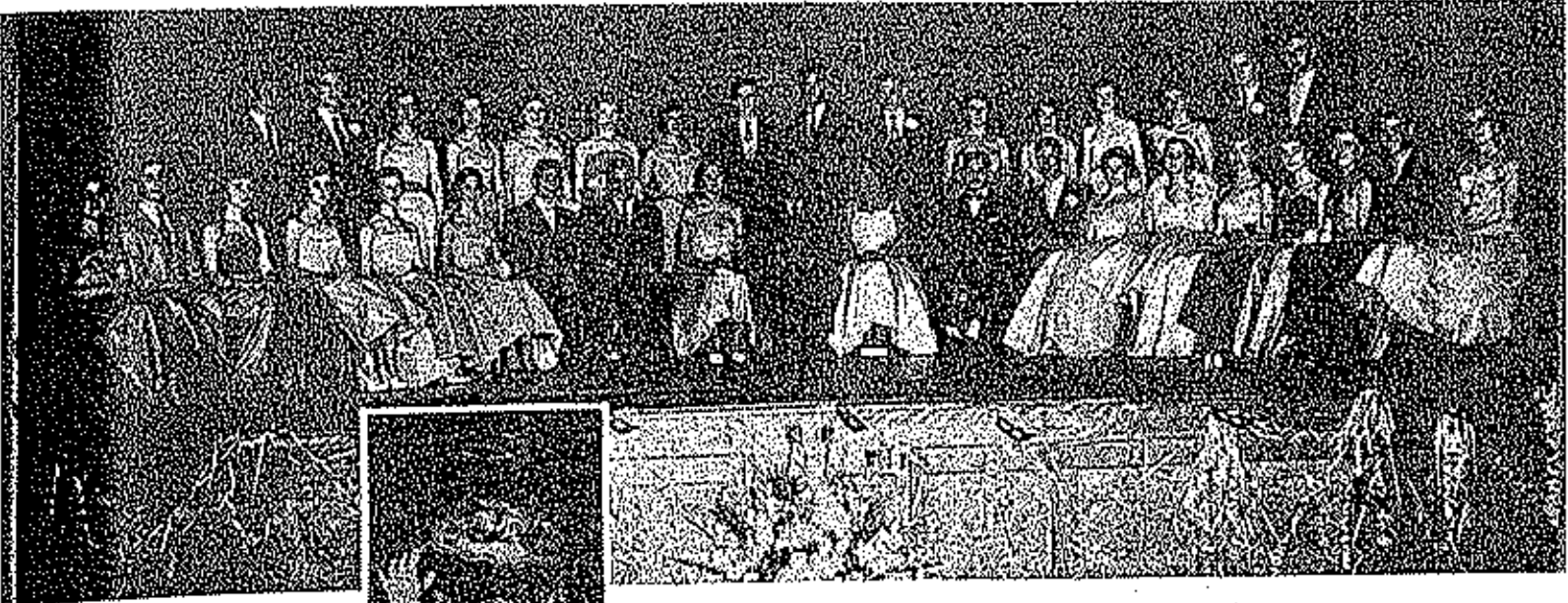
46 JIMMIE LOU CRIGLER - President



CARL STEPHENS - Vice-President



ANN KARLEN - Secretary-Treasurer

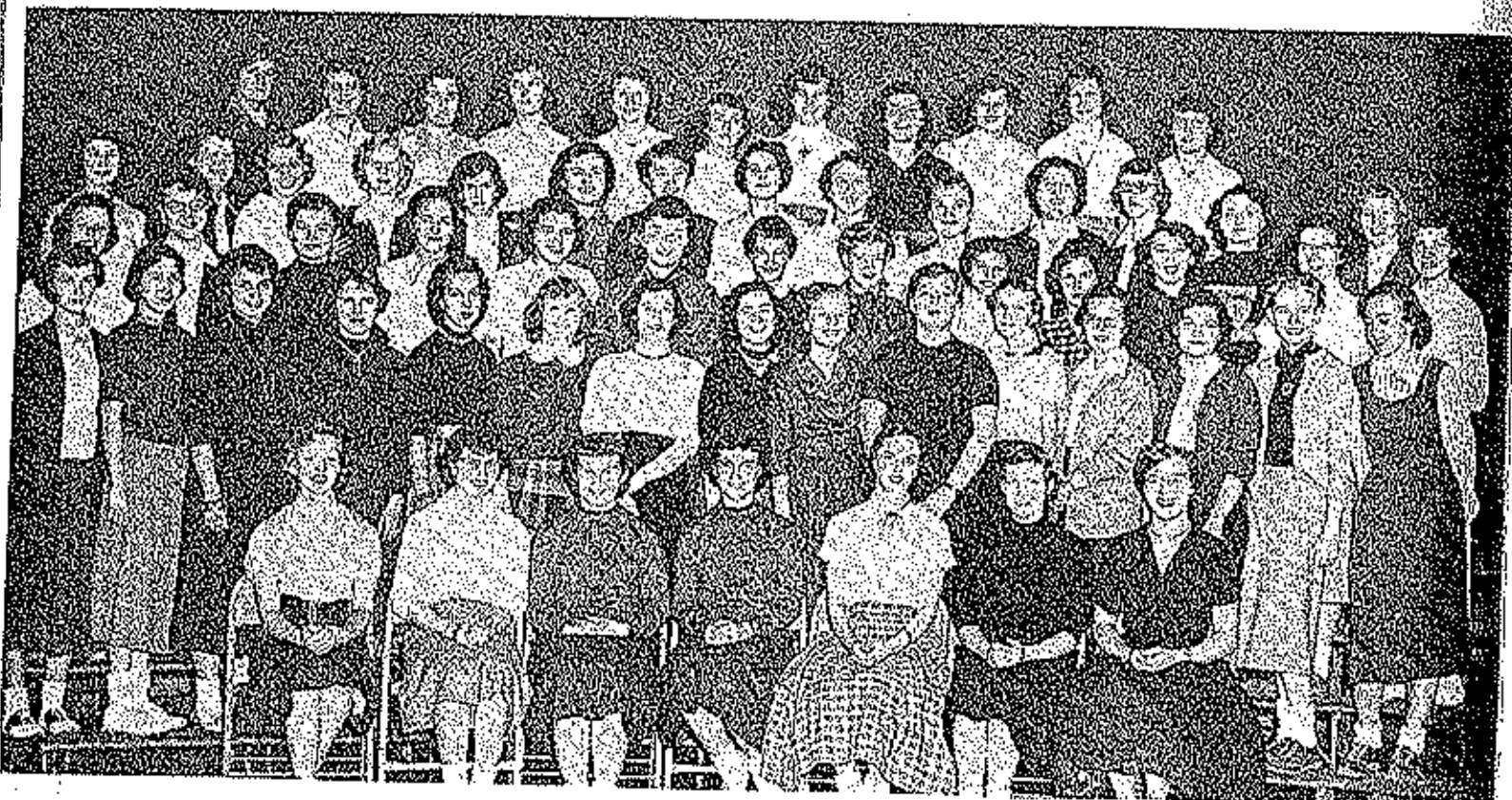


Spring Induction time again! Theme? "My Blue Heaven"? "Song of the Deep South"? "Stalag 17"? ! ? ! Confusion! Loud voices! Frustration! A timid voice with "Mardi Gras"! A startling calm! Then "Why not?" "It's perfect!" So, on the evening of March 16, 1954, the gym with its masks, balloons, confetti, serpentine, music, and laughter -- with its air of mystery, intrigue, and romance, could easily have been mistaken for a carnival street in old New Orleans. Our lovely Queen of the Mardi Gras, from her royal throne, prompted the handsome gallants and lovely maids to enjoy to the fullest a charmed evening.

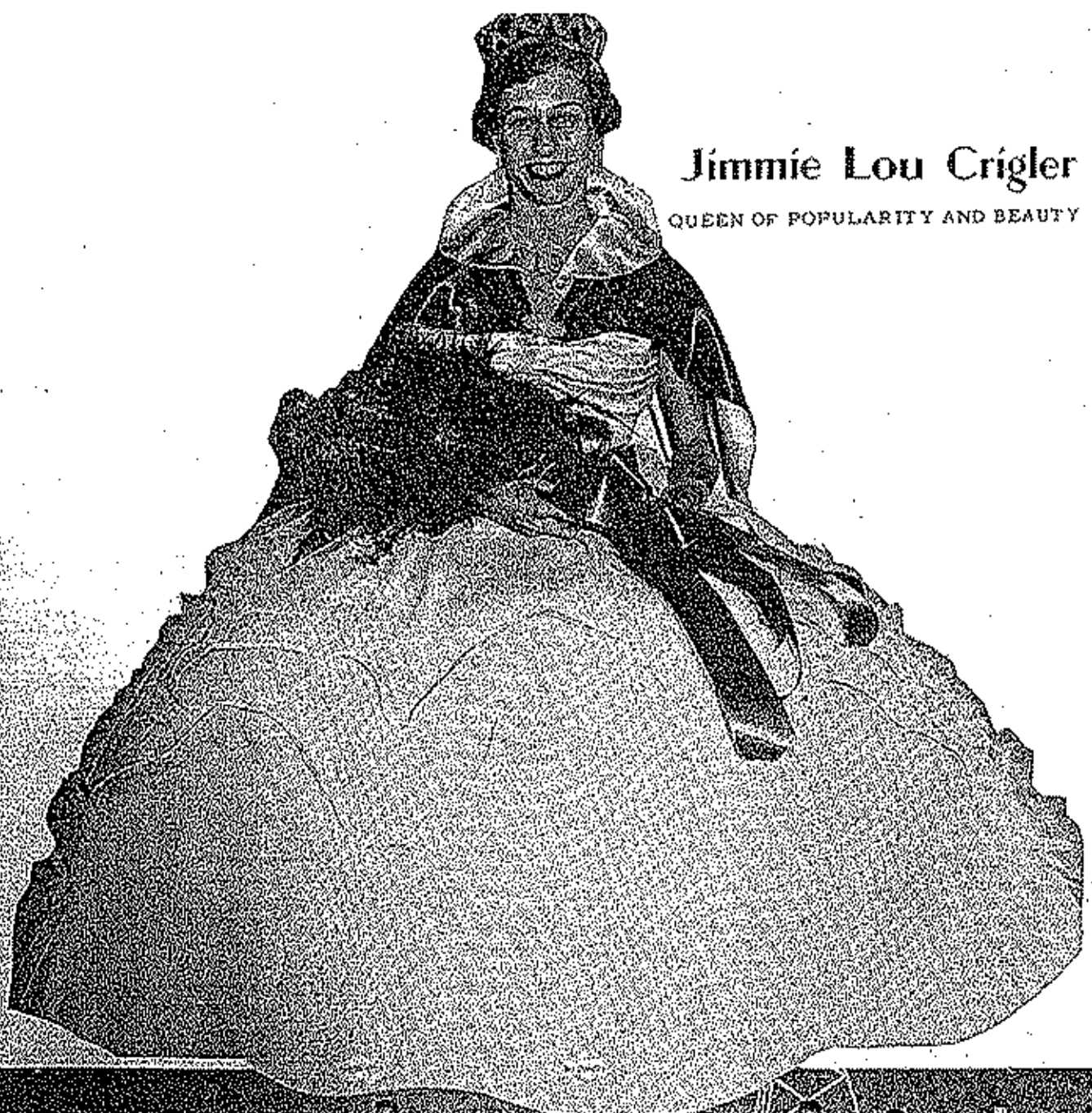




Hostess Club



F. H. A.



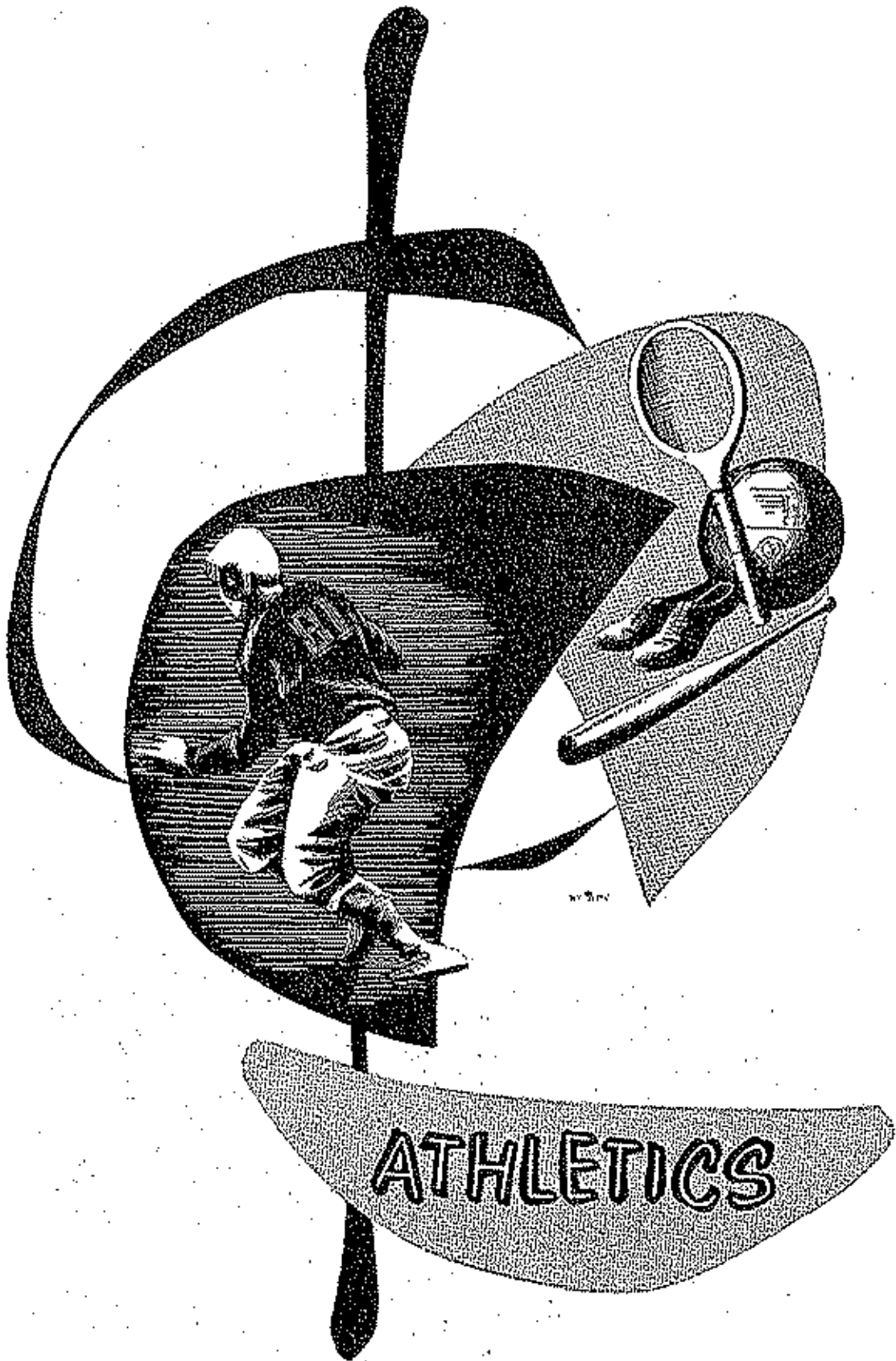
Jimmie Lou Crigler

QUEEN OF POPULARITY AND BEAUTY



Queen and Her Court

FIRST ROW: David Eckenbarger, Sarah Van Hoosier, Frankie Calhoun, Carl Simmons, Mary
 Irene Davis, Sealing. SECOND ROW: Karla Kaye, Mary Ann Seelby, Dixie Hymar, Loyce
 Keadon, Jimmie Lou Crigler, Linda Ann Raynes, Ruth Clement, Pat Rogah, John Mohor.
 THIRD ROW: A. Herald, Betty Apperson, Don Reed, C. F. Haven, Larry Worthley, John
 Miller, Max Nickerson, Gordon Davidson, Benny Jackson, A. Herald,
 Billie...

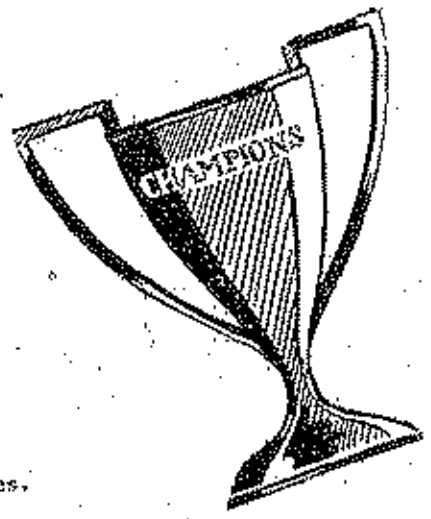
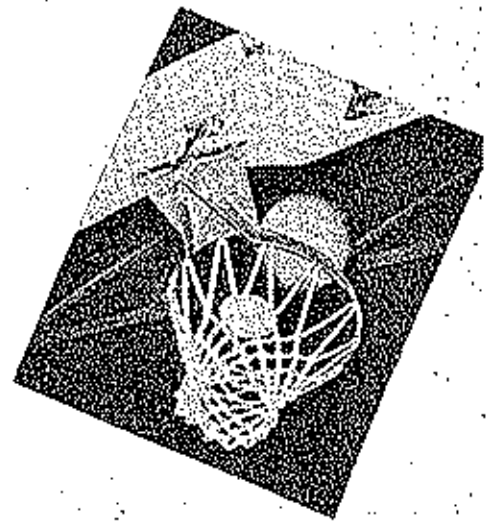


ATHLETICS



Eldon

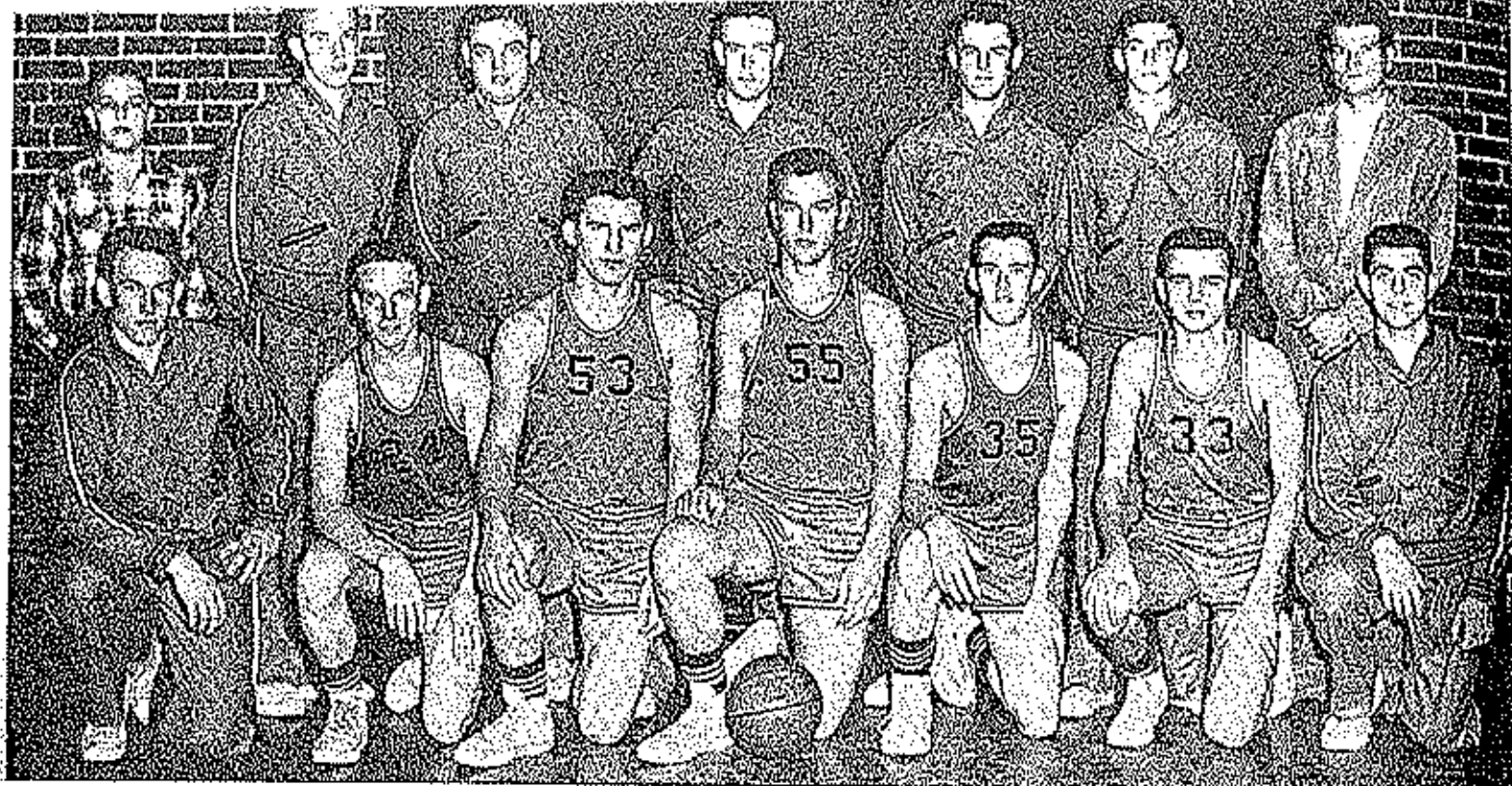
77	Warsaw	57
53	Osage	50
61	Lebanon	59
89	Tipton	62
69	Phillipsburg	60
73	Conway	55
57	Rolls	43
76	Sedalia	56
75	California	69
57	Versailles	60
91	Stover	72
79	Warsaw	45
92	Stover	73
71	Camdenton	45
82	Fulton	78
82	M. M. A.	48
60	Hickman	51
76	Mexico	57
47	Montgomery City	61
73	Tipton	50
45	Osage	49
87	St. Elizabeth	49
77	Newburg	59
91	Fulton	54
61	Stockton	53
73	California	60
71	Versailles	61
55	Jefferson City	47
	Camdenton	



Record--Won 25 Lost 3

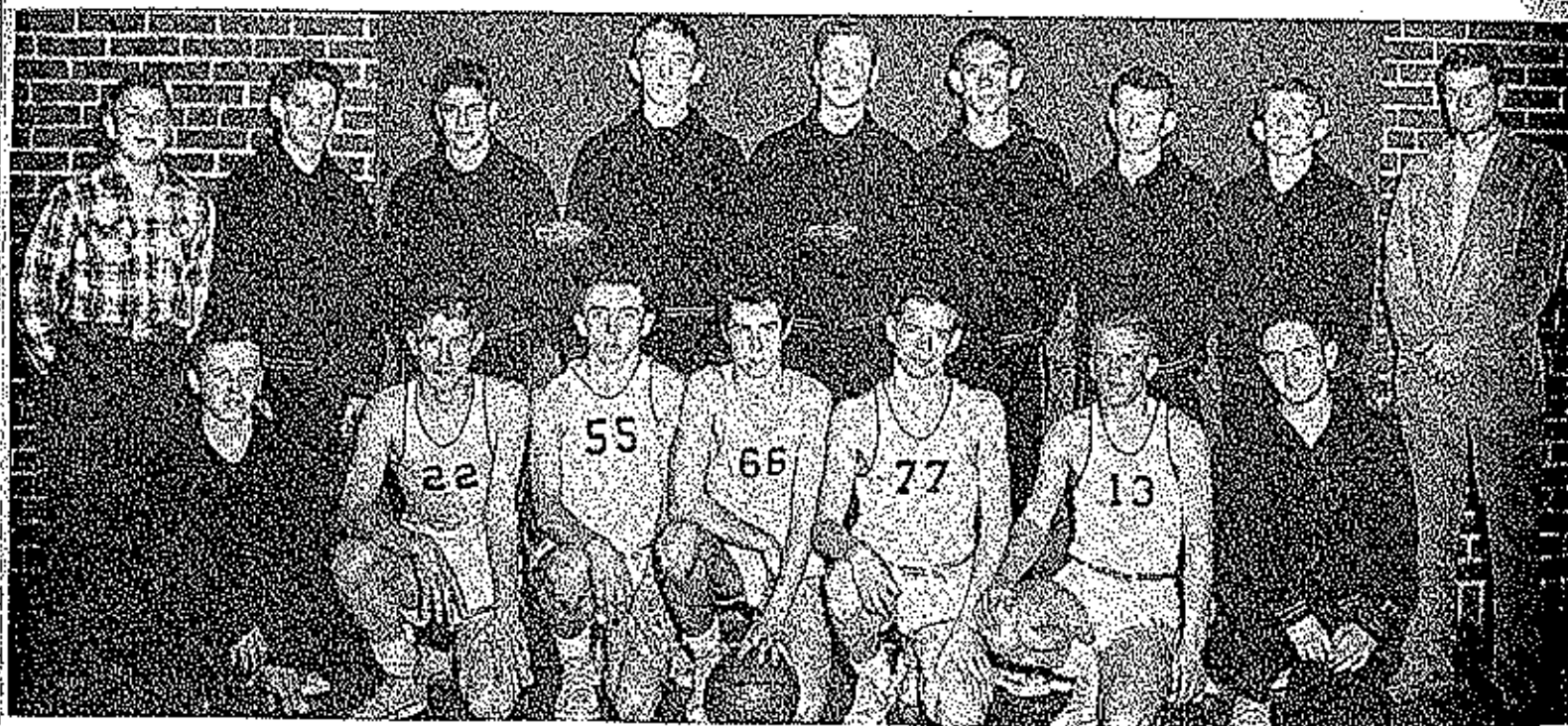
First place Camdenton Tournament
 Second place Fulton Tournament
 First place Eldon Tournament

Tied for first in Tri-County Conference with Osage and Versailles.



"A" Team

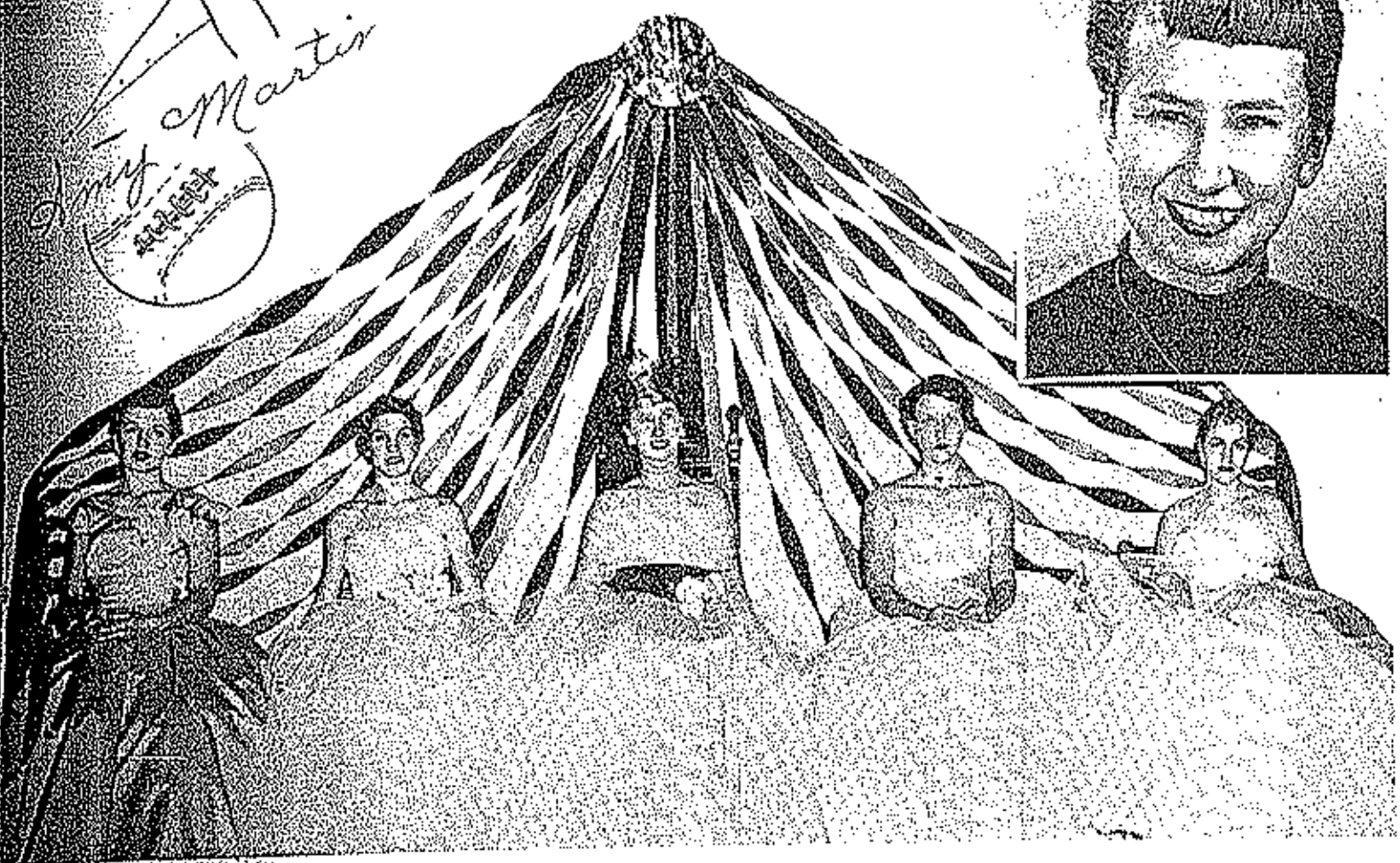
STANDING: Manager Reed Bailey, Gary Nichols, Don Thompson, Frank Buster, John Millard, Gary Cooper, Coach Weir. KNEELING: Don Ham, Jerry Welch, Paul Simmons, George Robinson, Harold Nichols.



"B" Team

STANDING: Reed Bailey, Kenny Whitten, Don Reed, Douglas Rehr, Harold Gortner, Wayne Scott, Albert Graham, Frank Clark, Coach Weir. KNEELING: Gene Catron, Bob Regan, Bill Gorhart, Gerald Jenkins, Max Nickerson, Claude Mayer, Jerry Van Pool.

Amy Martin



Maids

JOAN BLAIR
MARGE McDONALD

Queen

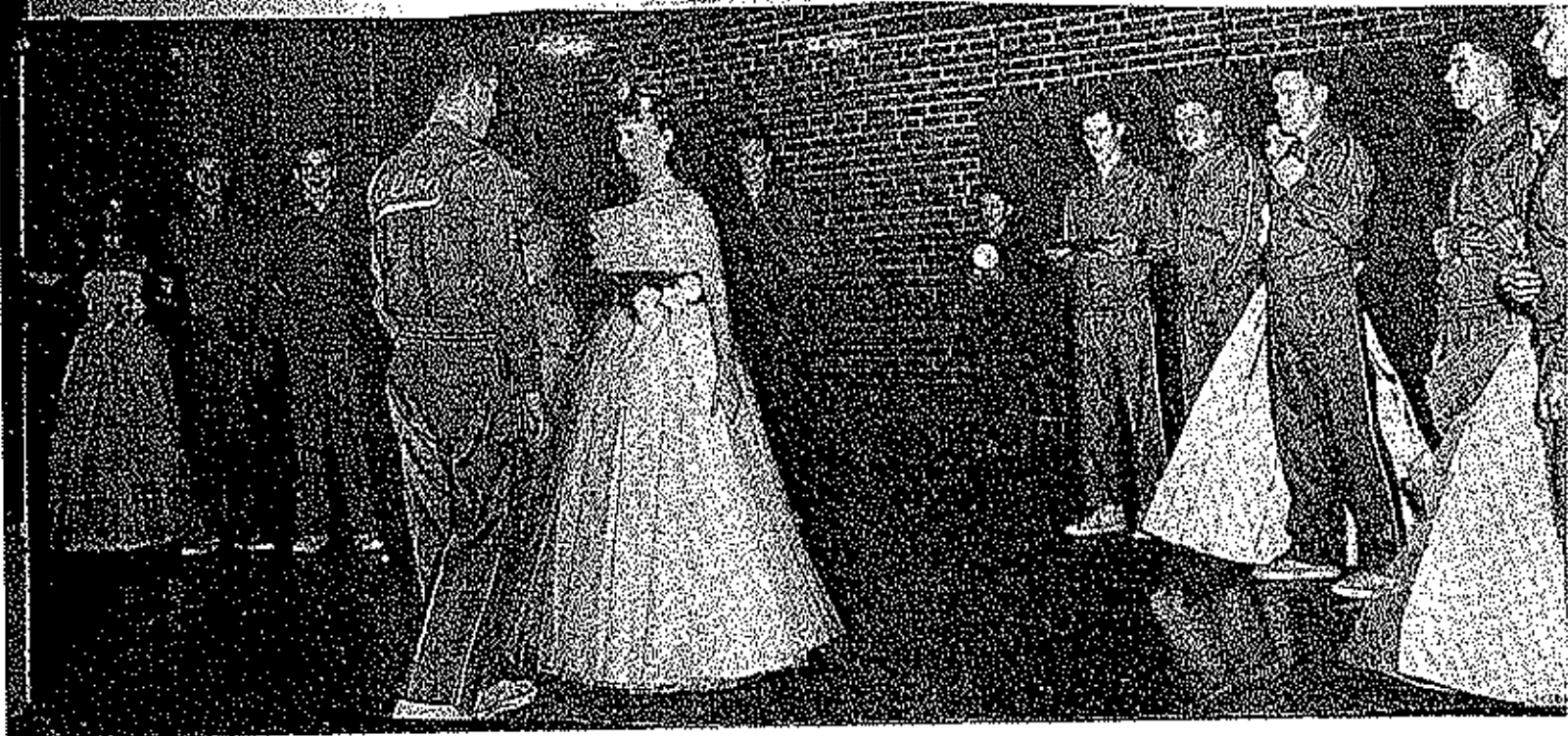
AMY MARTIN

Maids

LOYCE REA
TINA VILLIE

Coronation

STANDING: John Millard, Marge McDonald, Gary Cooper, James Herforth, Don Ham, Loyce Rea, George Robinson, Gary Nichols, Harold Nichols, Don Thompson, Joan Blair, Frank Buster, Marvin Summers, Tina Villie, Jerry Welch. FRONT: Paul Stenmons and Amy Martin.



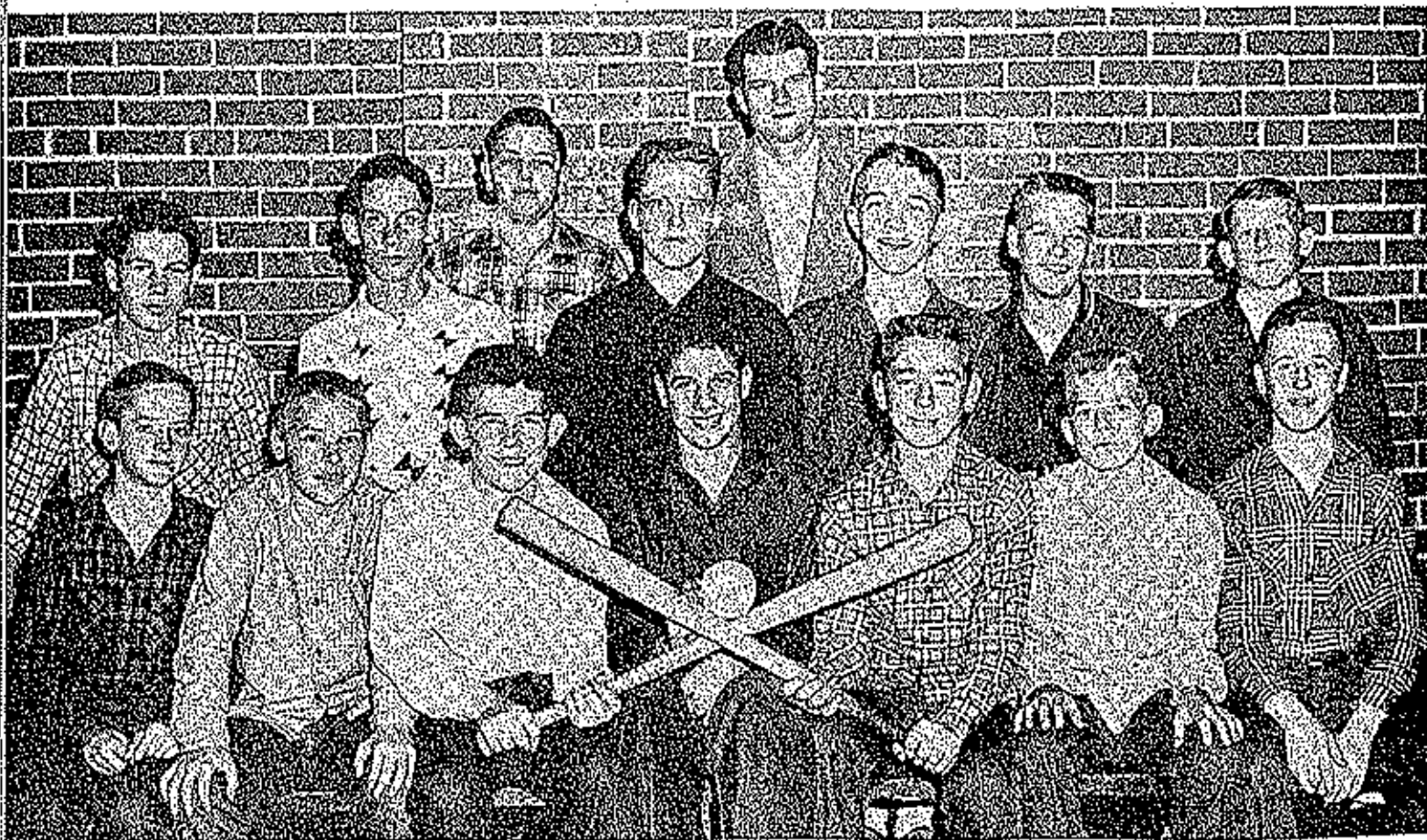


Senior High Softball

BACK ROW: Coach Weir, Team Manager Road Bailey. SECOND ROW: Jerry Van Pool, Albert Graham, Claude Hayes, Bill Gerhart, Harold Nichols, Jimmie Jones, FIRST ROW: Jerry Welch, Bob Regan, Don Thompson, George Robinson, Paul Simmons, Don Ham, Marvin Summers.

Junior High Softball

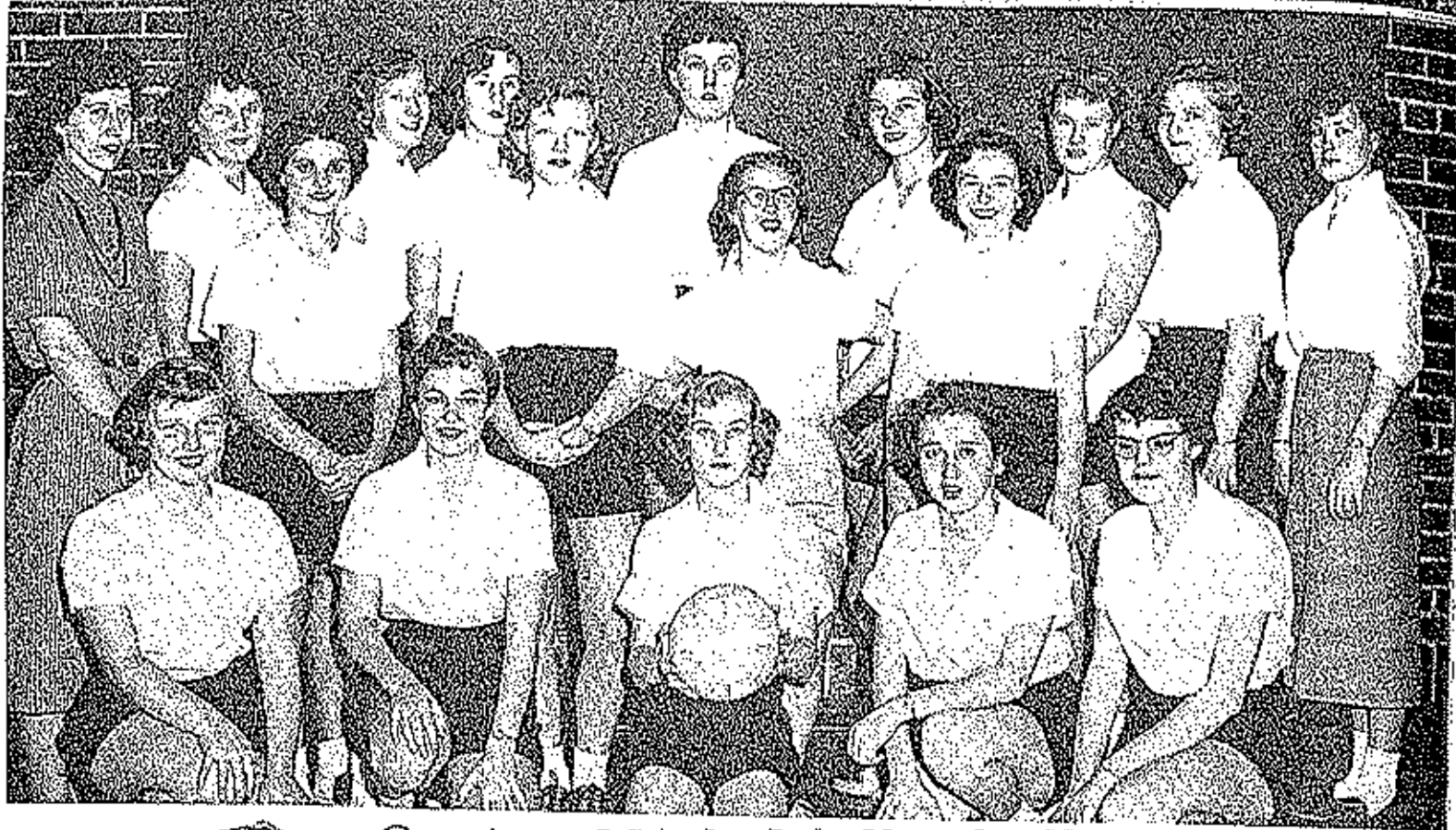
BACK ROW: Team Manager Road Bailey, Coach Weir. SECOND ROW: Ronald Jones, Wayne Scott, Harold Gerhart, Douglas Kehr, Joe Hammond, Frank Clark. THIRD ROW: Charles Wood, Ralph Holt, Charles Pope, Don Reed, Ronale Stoney, Johnny Bailey, Gene Cutron.





Senior High Softball
Junior High Softball





Senior High Volleyball



Junior High Volleyball

"B" Team Wins Tri-County Conference

Record 14 - 4

"A" Team Goes to State

Record 30 - 4



Regional at Boonville

Eldon	79	Boonville	62
Eldon	48	Hickman	43
Eldon	51	Jefferson City	46

State Class A Tourney at St. Louis

Eldon	52	Kirkwood	48
Lost second game to Maplewood.				