

Dedication

Schools are established to provide the students with citizenship work shops, with career laboratories, and with practice fields in skills and attitudes. Eldon High School today, as in the past, provides its students an opportunity to create or to delve into the unknown in search of knowledge. In the classroom, on the athletic field or in a social function, the student develops those traits and that character which will make the adult.

Here the competitive spirit of each student spurs each individual student to greater heights. Because of the attainments of one, others are stimulated to new achievements. With pride we honor those who have reached noteworthy goals.

To those students who humbly search for new and greater horizons, to those whose inquisitive minds, competitive spirit, and motivated ambitions spur them to strive to surpass those heights already attained, we dedicate the 1957 Referet.

Board of Education of Eldon

Administrative Unit R-1



SITTING--Mr. Dean Clawson, member; Mr. Alton Hendricks, President; Dr. C. H. Perkins, Vice-President; Betty Hirschman, Secretary.
STANDING--Mr. B. R. Collier, Superintendent; Mrs. W. W. Harvey, member; Mr. Louis Anderson, member; Mr. Dowey Jackson, member.



SUPERINTENDENT-S. R. Collier



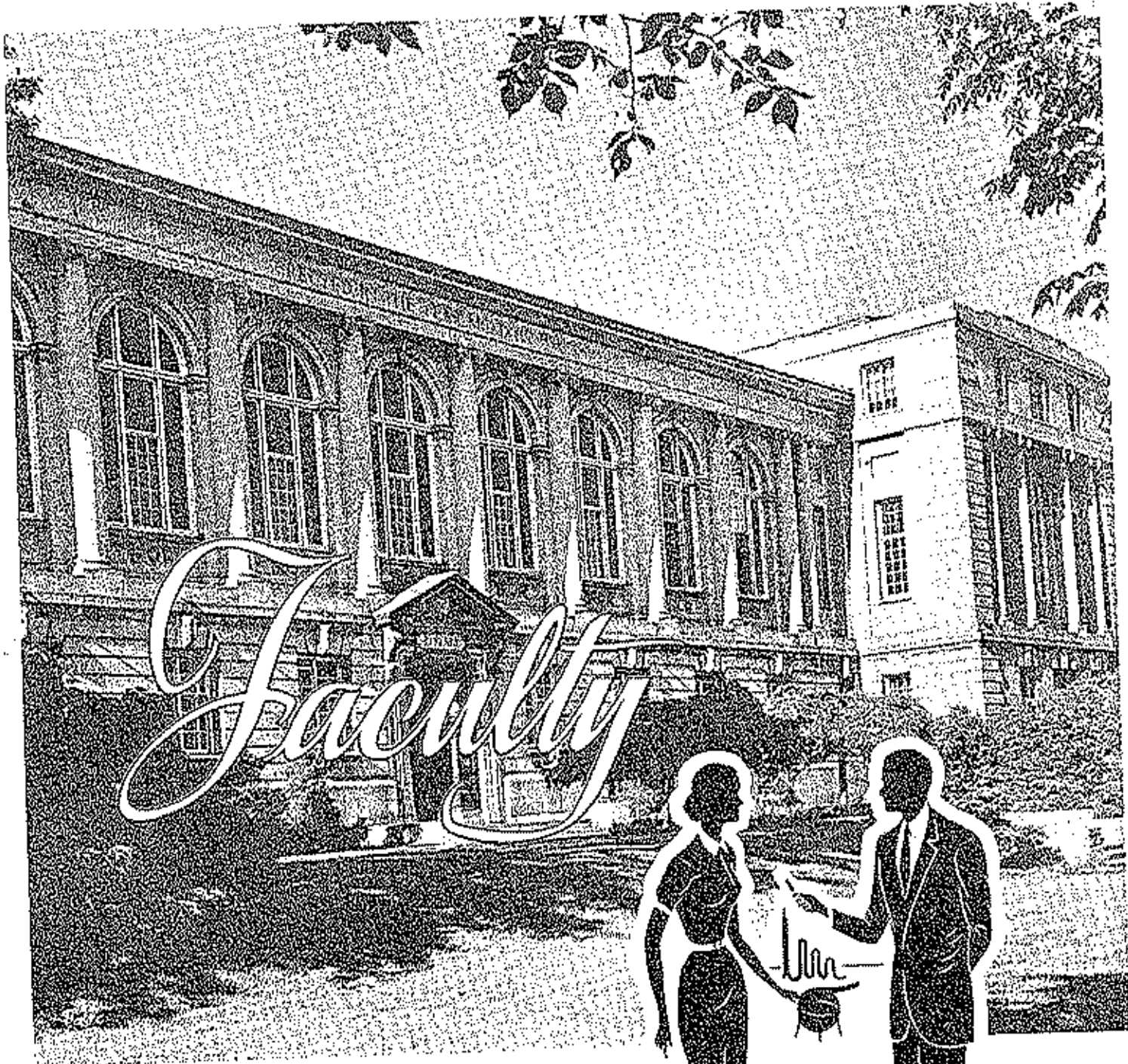
PRINCIPAL-Max Hunter



SECRETARY TO THE PRINCIPAL-Sirley Gladson



SECRETARY TO THE SUPERINTENDENT-Letty Hirschman





Girls' Physical Education-Ed Hodges



Vocational Home Economics-Winnie Mae Rohlfing



Coach-Harold Wetz



English-William Chancy



Vocational Agriculture-Clifford Greenway



Co-ordinator-Frank Drake



Library-Ruth Lupardus

World History-Alice Vernon



Art-Mary Vernon

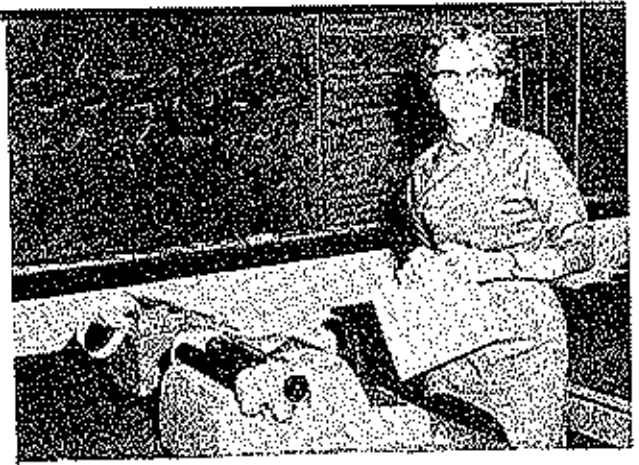


Social Studies-Oliver Stephens





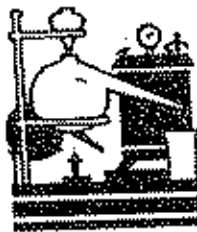
Music-Gertrude Malofan



Commerce-Eunice Stephens



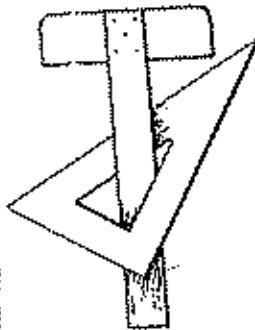
Chemistry-Leland Young



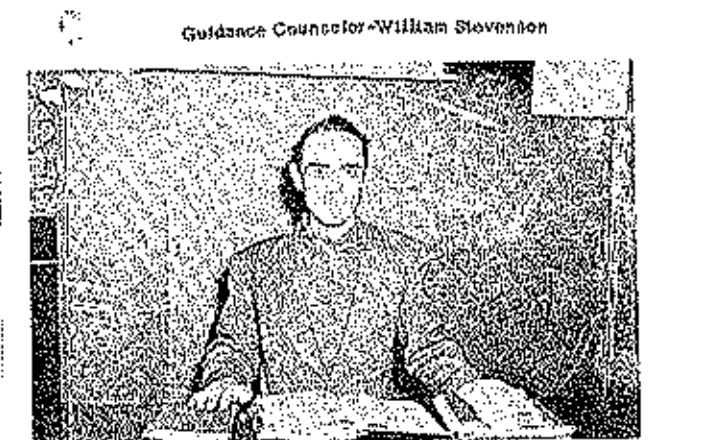
Social Studies-John Dowler



Industrial Arts-Virgil Jurgensmayer



Social Studies-Adolph Jones



Guidance Counselor-William Stevenson



English-Martha Spinks



Mathematics-Freds Lane

Graduates





BILL GURNATT
 Senior Class President 4; Prodoman
 Class President 1; Missouri Boys'
 State 3; Student Council 1, 4; State
 Student Council Workshop 2; State
 Student Council 2, 3; "A"
 Basketball 2, 4; "B" Basketball 1, 2;
 Jr. High Basketball 1; Senior High
 Softball 2, 3, 4; Junior High Softball
 1; Track 1, 2, 3, 4; Maroon & Gold
 Staff 2; Maroon & Gold Sports Edi-
 tor 3; Maroon & Gold Business Man-
 ager 4; Band 1, 2; Mixed Chorus 2;
 "E" Club 3, 4; Boys' Glee Club 2;
 Esprit Fall Festival 2.



RITA CAMPAIGNE
 Honor Society 2, 3; Cheerleader 1;
 Speech and Dramatics 1; Mixed Cho-
 rus 1, 2, 3, 4; Maroon and Gold Staff
 2; Maroon and Gold Assistant Editor
 3; Maroon and Gold Editor 4; Junior
 High Volleyball 1; Senior High Volley-
 ball 2, 4; Junior High Softball 1; Sen-
 ior High Softball 2, 3, 4; Pop Squad
 1, 2, 3, 4; "B" Cheerleader 1; "A" Cheer-
 leader 2, 3, 4; Missouri Girls State 3;
 Freshman Class Secretary 1; Sophomore
 Class Secretary 2; Junior Class Pres-
 ident 3; Student Council 2, 4; Tri-County
 Speech Contest 1, 2, 3, 4; Projector
 Club 3; American Legion Oratorical
 Contest 4; Awarded Humanity "E" 3.



JUDY MURRELL
 Honor Society 2, 4; Speech Club 2;
 Glee Club 1, 2, 3; Referee Staff 2, 3, 4;
 Assistant Editor 2; Referee Editor 2;
 Volleyball Intramurals 1, 2, 3, 4; Sen-
 ior High Softball 3; Pop Squad 1, 2;
 Missouri Girls' State 3; Student
 Council 1, 3; Student Council Vice-
 President 3; Preliminary Speech
 Contest 1, 2, 3, 4; Tri-County Speech
 Contest 4; District Contest 4; F. H. A.
 1, 2, 3, 4; F. H. A. Parliamentarian 4;
 House Club 2; Music Comments 1, 2,
 3; Fall Festival Staff and Director 1,
 2, 3, 4.



JOHN WOOD
 Junior High Softball 1; Junior High Base-
 tball 1; Senior High Softball 2, 4; "B"
 Team Basketball 1, 2; "A" Team Basket-
 ball 3, 4; Track 1, 2, 3, 4; Glee Club 1;
 Mixed Chorus 2, 3; Maroon & G. O. S.
 4; "E" Club 3, 4; Junior Class Vice-
 President 3; "E" Club Vice-President
 3; Student Council 1, 2, 3, 4; Coon
 Eaters 3; Boys' State 3; State Student
 Council Convention 2; Student Coun-
 cil Workshop 3.



STEVE HUTCHINSON
 Junior High Softball 1; Junior High Bas-
 tball 1; "B" Team 1, 2; Referee Staff
 2, 3, 4; Fall Festival Master of Cer-
 monies 3; Honor Vice-President 4;
 Basketball Intramurals 1, 2; C. O. S. 4;
 Quorum Club 1; Speech 1.



ANN BEARD
 House Club 1; F. H. A. 1, 2, 3, 4;
 F. H. A. Secretary 3, 4; Honor Soci-
 ety 2, 4; Honor Society Vice-Pres-
 ider 4; Volleyball Intramurals 1, 2, 3,
 4; Referee Staff 2, 3, 4; Referee As-
 sistant Art Editor 3; Referee Art Edi-
 tor 4; Maroon & Gold Staff 4; Glee'
 Club 4; Pop Squad 3; Office 4.



NOVA PEARSON
 F. H. A. 1, 2, 3; Junior High Softball
 1; Senior High Softball 2, 3, 4; Junior
 High Volleyball 1; Senior High Volley-
 ball 2, 3; "A" Team Cheerleader 2, 3;
 "A" Team Cheerleader 4; Coon Eaters
 3, 4; Fall Festival Staff 3, 4; Honor
 Society 3; Student Council 4; Student
 Council Secretary 4; Oratorical Con-
 test 4; Volleyball Intramurals 1, 2, 3, 4;
 Student Council Workshop 3; Refere-
 ees' Association Club 3; Maroon and
 Gold Staff 4; Maroon and Gold Head
 Typist 4.

ALBERT SHAW CAMPBELL
 Junior High Softball 1; Senior High
 Softball 2, 3, 4; Junior High Basketball
 1; "B" Basketball 1, 2; "A" Basketball
 3, 4; Track 2, 3, 4; "E" Club 2, 3, 4; "E"
 Club President 3; Band 1, 2, 3, 4; Mixed
 Chorus 2, 3; Boys' Glee Club 1, 2, 3;
 Student Council 1, 2, 3, 4; Student Body
 Vice-President 4; State Student Coun-
 cil Convention 2; English Vice-Pres-
 ident 2; American Legion Oratorical
 Contest 4.





GERALD HIGGINS
 "F" Club 2, 4; "B" Basketball 1, 7;
 "A" Basketball 3, 9; Junior High
 Football 1; "H" Club Vice-President
 4; Basketball Intermural 1.



JOAN HARK
 Fall Festival Queen 4; Fall Festival
 Maid 1; Basketball Maid 4; Pep
 Club 1, 2, 3; "B" Cheerleader 3;
 Junior High Softball 1; Senior High
 Softball 2, 3, 4; Junior High Volley-
 ball 1; Senior High Volleyball 2, 3,
 4; Freshman Secretary 1; Junior
 Treasurer 3; Mixed Chorus 1, 2, 3;
 Girls' Glee Club 1, 2, 3; Band 2, 3;
 Monitor 2; Library Club President 3;
 Library Club 1, 2, 3, 4; Intermurals
 1, 2, 3, 4; Color Bearer 1; Spring
 Show 1, 2, 3; Music Contests 1, 2,
 3; Menajah 1, 2, 3, 4.



BARBARA DIANE SHAN
 Leadwood High 1, 2; Library Club 4;
 Mixed Chorus 3; Girls' Glee Club
 3; Freshman Secretary 1; Sophomore
 Vice-President 2; I.H.A. 1, 2, 3, 4;
 Pep Club 1, 2, 3, 4; Menajah 4;
 Spring Show 3; Music Contests 3.



ROB WYRICK
 Honor Society 3, 4; Home Society
 President 4; Student Council 3, 4;
 C.O.E. 4; C.O.D. President 4;
 C.O.E. Basketball 4; Junior High
 Softball 1; Senior High Softball 4;
 "E" Club 4; "B" Basketball 3; Bas-
 ketball Intermurals 1, 2, 4; Inter-
 Class Track Meet 3.



KENNETH THOMAS
 C.O.E. Club 4; C.O.E. Basketball 4; Sopho-
 more Club 1; Boys' Glee Club 3; Basketball
 Intermurals 1, 2, 3, 4; Three One-Act Plays
 1, 4; Audio-Visual Education Club 1, 2, 3, 4.



DOLORES HARKER
 Junior High Softball 3; Junior High
 Volleyball 1; Senior High Softball
 2, 3, 4; Senior High Volleyball 2, 3,
 4; Basketball Maid 4; Intermurals
 1, 2, 3, 4; Junior Secretary 3; Pep
 Club 1, 2, 3, 4; Freshman Treasurer
 1.



ALASKA GREEN
 Junior High Softball 1; Senior High Softball
 2, 3, 4; Junior High Volleyball 3; Senior High
 Volleyball 3, 4; Fall Festival Maid 1; Fall
 Festival Maid 4; Protector Club 2, 4; Pep
 Club 1, 2, 3, 4; Pep Club President 4; Honor
 Society 3, 4; Student Council Coordinator
 3, 4; Volleyball Intermurals 1, 2, 3, 4; Men-
 jah 1; Basketball Queen 4.



MALCOLM MANER
 Freshman Class Vice-President 1; Student
 Council 3, 4; Maroon and Gold 4; "E" Club
 1, 4; Track 2, 3, 4; Boy's State 3; Protector
 Club 3; Speech and Dramatics 7; C. O. E.
 & C. O. E. Basketball 4; One Act Plays 3, 4;
 Fall Festival 3, 4; Basketball Intermural
 1, 2, 3, 4.



MARY ANNE SERLEY
 Volleyball Team 1, 2; Softball Team
 1, 2, 4; F. H. A. 1, 2, 3, 4; Sophomore
 Maid 2; Pop Squad 1, 3, 4; W. C.
 T. A. Award 3; Girls' Glee Club 1,
 2; Honor Society 2, 3, 4; Honor So-
 ciety Secretary-Treasurer 4; Girls'
 State 3; Student Council 1, 2, 3;
 Maroon & Gold 2, 3, 4.



JAMES R. BROWN
 Softball Team 1; Professor Club 1
 2; C. O. E. Club 3, 4.



CATHERINE ANN ABSHER
 Morehouse High 1, 2; Floss High 3;
 Pop Club 1, 2, 3, 4; Glee Club 1, 2;
 Volleyball 1, 2, 3, 4; Softball 1, 2,
 3, 4; Student Council 1; F. H. A.
 (Sub-District Secretary) 2; C. O. E.
 4; Senior Secretary-Treasurer 4;
 Incumbent 3, 4; Freshman Pres-
 ident 1; O. A. A. 3.



MICHAEL RAY FRYER
 Mooreville High School 1; C. O.
 E. 3, 4; Mixed Chorus 2; Glee Club
 1, 2, 4; Maroon 2, 3, 4.



GORDON L. DAVIDSON
 Vads 1, 2, 3, 4; Soccer Club 1;
 Interscholastic Track 1, 2, 3; Intramural
 Basketball 1, 2, 4; Mixed Chorus
 2, 3; M & G Sports Co-Editor 4;
 Maroon & Gold Staff 3, 3, 4; Fall
 Festival Escort 2; Fall Festival 2,
 4; Audio-Visual Education Club 3,
 4; Student Council Chairman 4;
 4; 3-One Act Plays 4.



CAROLE ELAINE MAHER
 Girls' Glee Club 1; Sophomore Pil-
 grimage 2; Honor Society 2, 3, 4;
 Honor Society President 4; F. H. A.
 1, 2, 3, 4; Sub-District F. H. A. Sec-
 retary 4; Library Club 2; Speech and
 Dramatics 1; Incumbent 2, 3, 4; Festi-
 val Maid 3; Girls State Alternate 3.



JEANNETTE KVERNESHELL
 Honor Society 3, 4; Honor Society
 Secretary and Treasurer 4; Senior High
 Volleyball 3, 4; Senior High Softball
 1, 4; Volleyball Incumbent 1, 2, 3, 4;
 F. H. A. 1, 2, 3, 4; F. H. A. Treasurer 4.



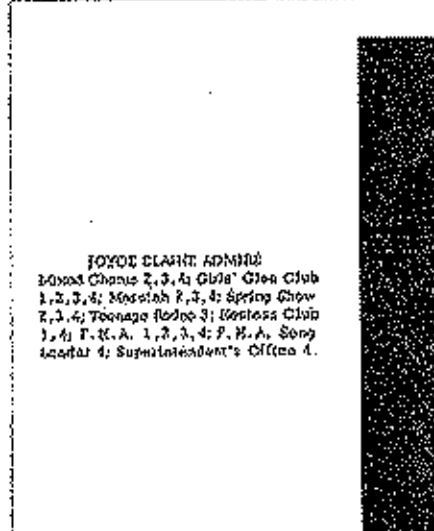
HOWARD APPERSON
 Soccer Club 1; Fall Festival 1, 2, 3, 4;
 Three One Act Plays 3, 4; Speech and
 Dramatics 3; Intramural Basketball 1,
 2, 3, 4; Audio-Visual Education Club
 1, 2, 3, 4; Audio-Visual Education Club
 President 4; Wireless of Edgemoor Speech
 Contest 2, 3, 4.



CHARLES SERL
 Knoxville High 1, 2, 3; Basketball
 1, 2, 3; Baseball 1, 2, 3; Track 7, 8;
 Boys' Chorus 1, 2; F. H. A. President
 3; Junior Class Play 3.



BARBARA ALBERTSON
 Volleyball Intramurals 1, 2; Girls' Glee
 Club 1; Mixed Chorus 1, 2; Hostess
 Club 1, 2, 3; F. H. A. 1, 2, 3; G. O. E.
 3; Monitor 1.



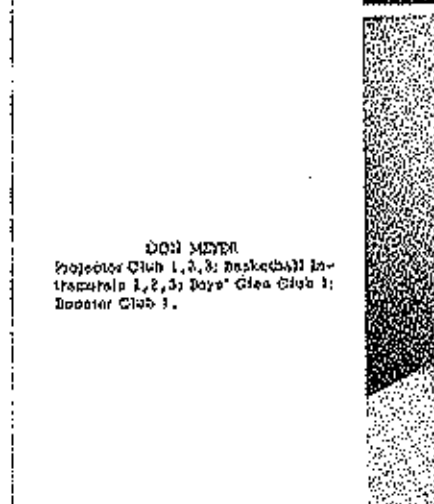
JOYCE ELAINE ADMITT
 Mixed Chorus 2, 3, 4; Girls' Glee Club
 1, 2, 3, 4; Baseball 2, 3, 4; Spring Show
 2, 3, 4; Teenage Lodge 3; Hostess Club
 1, 4; F. H. A. 1, 2, 3, 4; F. H. A. Song
 Leader 4; Superintendent's Office 4.



DON MEYER
 Projector Club 1, 2, 3; Basketball In-
 tramurals 1, 2, 3; Boys' Glee Club 1;
 Booster Club 1.



LARRY WOKHNEY
 Mixed Chorus 1, 2, 3, 4; Boys' Glee
 Club 1, 2, 3, 4; Mixed Double Quartet
 2, 4; Solo Part 3; Baseball 1, 2, 3, 4;
 Basketball Intramurals 1, 2, 3, 4; Junior
 High Softball 1; G. O. E. Club 3, 4; G.
 O. E. Basketball 4; G. O. E. Vice-Pres-
 ident 4; Booster Club 1; Spring Show
 1, 2, 3, 4.



JEAN LOUISE TODD
 F. H. A. 1, 2, 3, 4; Hostess Club 1, 3, 4;
 Hostess Club Sponsor 4; Volleyball
 Intramurals 4.



C. D. VERNON
 F. H. A. 1, 2; Fall Festival Escort 3;
 Audio-Visual Education Club 3, 4;
 Basketball Intramurals 1, 2, 3, 4.



SANDRA CANLOCK
 F. H. A. 1, 2, 3, 4; F. H. A. 3, 4; Glee
 Club 1; Job Club 3; Principal's Office
 4.



JEAN LOUISE TODD
 F. H. A. 1, 2, 3, 4; Hostess Club 1, 3, 4;
 Hostess Club Sponsor 4; Volleyball
 Intramurals 4.



C. D. VERNON
 F. H. A. 1, 2; Fall Festival Escort 3;
 Audio-Visual Education Club 3, 4;
 Basketball Intramurals 1, 2, 3, 4.



LORETTA AGE
 Health, Kentucky 3; Register/In Tennessee 2; F. H. A. 1, 2.



GENE BOMKER
 Audio-Visual Education Club 3, 4;
 Basketball Intramurals 1, 2, 3, 4.



JOHN FORRESTER
 C. O. E. Club 4; C. O. E. Basketball 4.



NORMA JEAN SCOTT
 Volleyball Intramurals 2, 3; Library Club 3, 4.



RUTH ELAINE MCDOWELL
 Junior High Softball 1; Senior High Softball 3, 4; Senior High Volleyball 4; Volleyball Intramurals 1, 4; Hostess Club 1, 2, 3, 4; F. H. A. Club 1; Band 1, 2, 3, 4.



DON ROWSER
 C. O. E. Club 4; C. O. E. Basketball 4.



GARY GAMBER
 F. H. A. 1, 2; F. H. A. Reporter 2; Football Club 4; Intramural Basketball 1, 2; Intramural Track 1, 2.



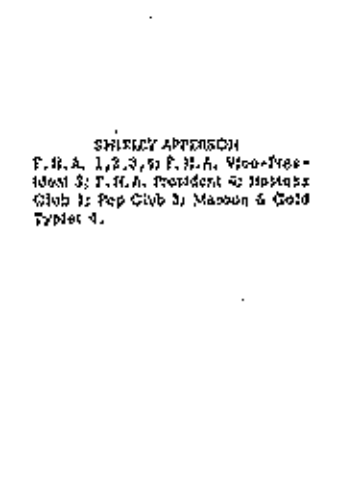
BONNIE ANN EVANS
 Samuel Clemens, California 1; Pep Club 3, 4; Month 2, 3, 4; F. H. A. 3, 4; Hostess Club 3, 4; Hostess Club for Bicentennial 4.



SAMUEL H. BAKER
 F. F. A. 1, 2, 3, 4; F. F. A. Secretary
 2; F. F. A. Vice-President 3; F. F. A.
 President 4; Student Council 1; Man-
 ager High Softball 1; Sector High Soft-
 ball 2, 4; Interschool Basketball 2; Jan-
 itor High Basketball 1; "B" Team Bas-
 ketball 1, 2; "A" Team Basketball 4;
 "E" Club 3, 4; Projector Club 3; Boys'
 Own Club 2, 3, 4; Mixed Chorus 2, 3, 4;
 Mensath 2, 4.



ANITA RUTH DILSE
 Fall Festival Board 1; Ball Roomer 2;
 Junior High Softball 1; Maroon and
 Gold Keyist 4; Mensath Tableaux 4;
 Diet Monitor 2, 3.



SHIRLEY APPERSON
 F. H. A. 1, 2, 3, 4; F. H. A. Vice-Pres-
 ident 3; F. H. A. President 4; History
 Club 1; Pep Club 3; Maroon & Gold
 Typist 4.



DAVID MORGAN
 Douglas High District, Oregon 1, 2;
 Band 3; Music Festivals 3.



DON HALL
 Ferguson High 1, 2; Fall Festival Exec
 4; Audio Visual Education Club 1;
 Track 3, 4; "H" Basketball 3; Base-
 ball Internships 3, 4; Mensath 4; Mu-
 sic Chorus 4; Chorus Conductor 4; Boost-
 er Club 4; Roving Show 3; Boys' Own Club
 4.



SHIRLEY KAY BOYD
 Internships 1, 2, 3, 4; F. H. A. 1, 2, 3, 4;
 Soccer High Volleyball 3, 4; Senior High
 Softball 4; Chorus 3.



ARDICE JOIRENT MEYER
 F. H. A. 1, 2, 3, 4; Basketball Midd-
 lebury 1, 2, 3, 4; Pop Squad 2, 4; F.
 David Democracy 4; Maroon & Gold
 Club's Glee Club 1, 4; Junior High Soft-
 ball 1; Senior High Softball 2, 3;
 Junior High Volleyball 1; Senior High
 Volleyball 3, 4; Mensath 1, 2; Valla-
 ball Internships 1, 4.



MARVIN ALDERMAN
 C. O. F. Club 4; Projector Club 3; Bas-
 ketball Internships 3, 4.





BARBARA GIDMAN
 Homecoming Club 1, 2, 3, 4; Homecoming Club
 President 4; Honor Society 3, 4.



JOHN WILLIAM MEYER
 Interscholar Interscholar 1, 2, 3, 4; F. T. A.
 1, 3; Inspector Club 3, 4; Booster Club
 4.

LEE ANN WEAVER
 cheerleader, High School 1, 2, 3; Chorus
 F. T. A. 1.



JAMES E. CHALMERS
 Booster Club 1; Projector Club 1, 2, 3, 4.
 Projector Club Vice-President 3; F. T. A.
 Chapter 1, 2, 3; Basketball Interscholar
 C. O. E. & C. O. E. Club Repository Sec-
 retary 4.

FRANCIS LOWME
 Dean and Code Staff 1, 2, 3, 4; M & G
 118 Co-Editor 4; Audio-Visual Ed-
 itor Club 1, 2, 3, 4; Mixed Chorus
 3, 4; Community Chorus 2, 3, 4;
 Glee Club 1, 2, 3, 4; Basketball
 Interscholar 3; Booster Club 2; Speech
 Contest 2.



JUNE BREWER
 Yenker High School 1, 2, 3; Pop Club
 3; F. T. A. 1, 2, 3; C. O. E. Club 4.



AUDREY BOND
 Glee Club 2; Mixed Chorus 2, 3; Miss-
 ion 3; Octavers 1; G. O. E. Club 4; C.
 O. E. Club, Secretary and Treasurer
 4; F. T. A. 1, 2, 3; Homecoming Club 1, 2.

JOHNNY WHEEL
 Basketball Interscholar 1, 2, 3, 4; Pro-
 jector Club 4; Interscholar Interscholar
 3, 4; Interscholar Track 1; Glee Man-
 ager 4; Glee Club 3.





LOLA JO AGES
 Band 1, 2, 3, 4; Clarinet Quintet 3;
 Girls' Glee Club 1; Music Contests
 1, 2, 3, 4; Maroon & Gold Typist 4;
 F. H. A. 1, 2, 3; F. H. A. Mission 3;
 Pep Squad 1, 2, 3, 4; Superintendent's
 Office 4.



LEON HICKS
 C. O. E. Club 4; F. H. A. 2; Mixed
 Chorus 1.



JIMMY MARTIN
 Tomamba 1; Boys' Glee Club 1, 4;
 F. H. A. 1, 2; F. H. A. Contest 2; Fro-
 Junior Club 3; Mission 4; Mixed
 Chorus 4; Music Contests 4; Fall
 Formal Skits 4; Basketball Intramurals
 2, 3, 4; Tomamba Intramurals 4; Monitor
 2.



CONSTANCE DARLENE BOYD
 Volleyball Intramurals 1; Speech 4;
 Pep Squad 1, 2; F. H. A. 1, 3, 4.



VIOLET LOUISA DAVENPORT
 F. H. A. 3, 4; F. H. A. Delegate 4;
 Nostalgia Club 1, 2; Volleyball In-
 tramurals 1, 2, 4.



DON KAYE
 Junior High Softball 1; Senior High
 Softball 3; C. O. E. Club 4; C. O. E.
 Basketball 4; Basketball Intramurals
 1, 2, 3, 4.



ROBERT KEIFFER
 Honor Society 2, 3, 4; Library Club 1;
 Mixed Chorus 1, 2, 3, 4; Band 2, 3, 4;
 Mission 2, 3, 4; Boys' State 3; Maroon
 & Gold Reporter 2, 3; Maroon & Gold
 Keiffer Aids 1; Maroon & Gold Sen-
 sibility Saker 4; State Piano Contest 2, 3;
 District Piano Contest 1, 2, 3; Tri-
 County Piano Contest 1, 2, 3; Accompan-
 ist Mixed Chorus 1, 2, 3, 4.



SONJA CHAE MORGAN
 F. H. A. 2, 3, 4; Nostalgia Club 3, 4;
 Volleyball Intramurals 1, 2, 3, 4; Super-
 Intendant's Office 4.



DONNA BROWN
 Basketball Club 2, 3; F. H. A. 1, 2, 3;
 Mixed Chorus 2, 3, 4; Glee Club 1, 2,
 3, 4; Pep Club 3; Co-Manager Volley-
 ball Team 4.



WILLIE WHITENER
 Mixed Chorus 2, 3; Basketball Intra-
 muros 1, 2, 3, 4; High Softball 1;
 Fr. High Softball 3.



DANNY HOIDT
 Projector Club 1, 2, 3, 4; Track 1, 2, 3, 4;
 C. O. H. Club 4; Mixed Chorus 1, 2, 3;
 "E" Club 3, 4; Basketball Intramuros
 1, 2, 3, 4.



JOMI LETHA YODD
 F. H. A. 1, 2, 3, 4; Basketball Club 1, 2, 3;
 Basketball Club Vice-President 3.



CORRIE HAMMOND



RICHARD EISER
 Booster Club 1; Intramuros 1, 2; C. O.
 H. 4; Glee 1, 2; Tennis Road-Do-O 3;
 Speech 3; Athletic Rope Manager in
 Three One Act Plays 1.



HOWARD COOPER
 Basketball Intramuros 4.



BARBARA ANN TWITCHELL
 Band 1, 2, 3; Music Contests 1, 2, 3;
 Pep Club 1; Motion and Field Typist
 3; Volleyball Intramuros 3, 4.



RUTH APPERSON
 Intramural 1, 2, 4; Volleyball Manager
 4; Hostess Club 1, 2, 3, 4; F. H. A. 1, 2,
 3, 4; Hostess Club Secretary 4; F. H. A.
 Treasurer 4; Monitor 3, 4; Office 4; Pep
 Club 3, 4; Glee Club 1, 2, 3.



RUTH FINLEY ATKOTT
 Mixed Chorus 1, 2; Glee Club 1, 2;
 Band 1; Pep Club 1, 2; Volleyball
 1; F. H. A. 1, 2, 3; Maroon & Gold
 Typist 4.



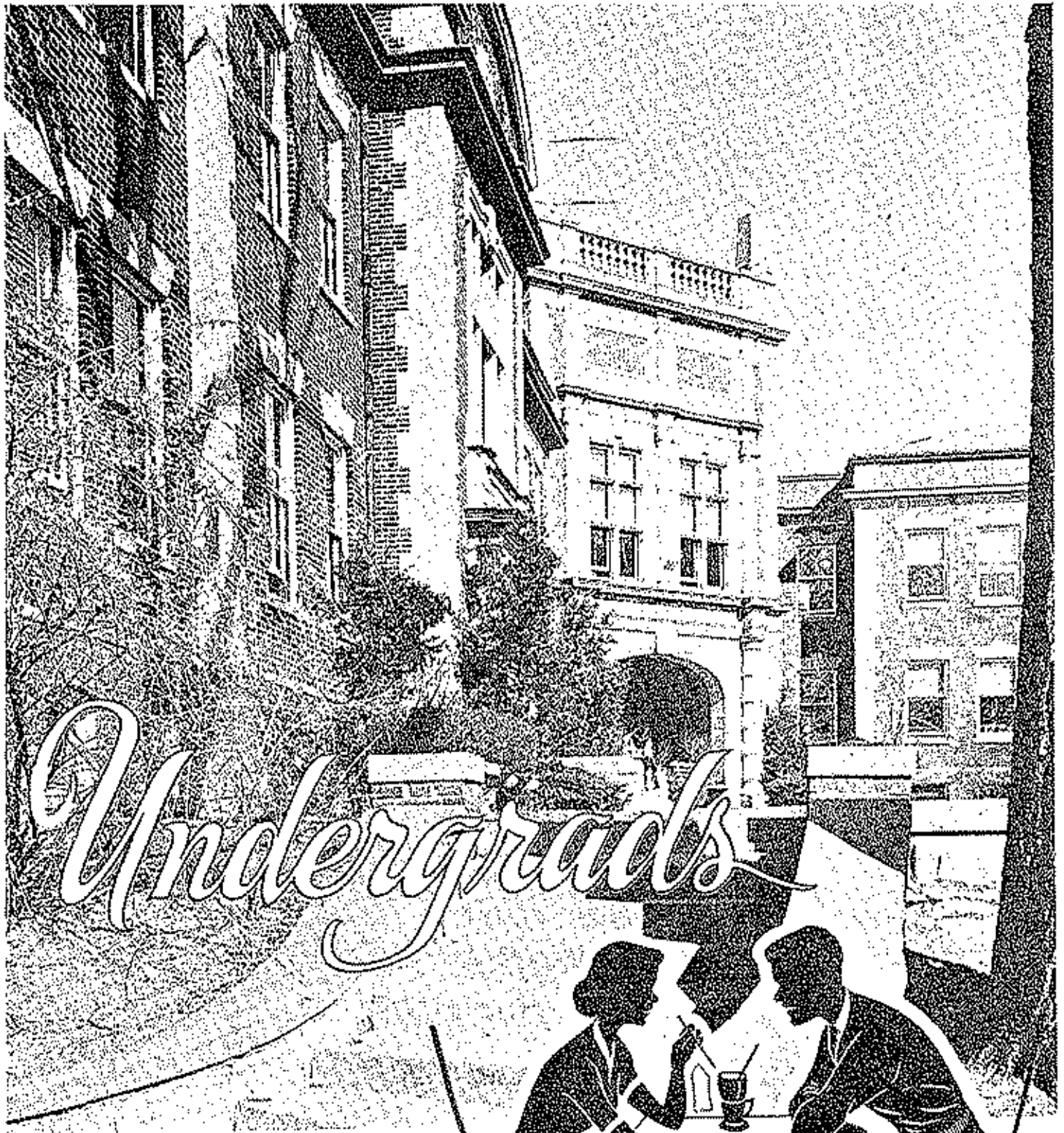
BETTY DEVOLLES

Gwendolyn Evelyn Workman
 F. H. A. 1, 2, 3; Hostess Club 1; Pep
 Squad 1, 2; Junior High Volleyball 1;
 Volleyball Intermural 1, 2; Speech 4;
 Fall Festival Karate 1; G. O. E. 4.



RUBY RUMYAN
 Honor Society 3, 4; Library Club 1, 2,
 3, 4; Library Club President 4; Hostess
 Club 1; Monitor 3, 4.





Undergracht



Gottsmiet, John Peter
 Campbell, John Edward
 Holdstock, Nellie Darlene
 Anon, Ruby Jean
 Apperson, Betty Carol
 Minges, Robert Calvin



Bashern, Harvey Len
 Betche, Joe Tom
 Bowlin, Leland Gerald
 Brown, Ronald James
 Calhoun, Audra
 Collier, Patricia Kay



Carolan, Harry Glen
 Catron, Gene Goldard
 Chapman, Fern Beatrice
 Clark, Frank Taylor
 Conlon, Hoo Ann



Cunningham, Judy Leo
 Curran, Howard David
 Daviss, Sue Marie
 Dean, Leroy Paul
 Denny, Betty Jo
 Dinwiddie, Betty Jean



Dyer, Janice Kay
 Eilers, Grace Eileen
 Gamphor, Luby
 Carroll, Cary Walker
 Gray, Helen Jean
 Gartin, Judy Allene





Green, Billie Fern
Hammond, Joe Lee
Hayes, Kari Edmund
Howren, Dolah Wasley
Hickoy, Linda Joyce
Hicks, Alma Marie



Jackson, Joseph Benjamin
Howser, Thomas Victor
Hunt, Ronald Lee
Jackson, Annette Rosa
Kehr, Jesse Douglas
Jones, Clinton Paul



Kays, Katie Dean
Vaughan, Donald Eddie
Kilwell, William Charles
Lake, Donald Leo
Laughlin, Bernice Lou
Lusk, Sally Donna



Maher, Jo Ann
Marie, Doris Fay
Wood, Charles Raymond
Musick, Ottolene
McKinley, Sally Ann
Pace, Linda Fay



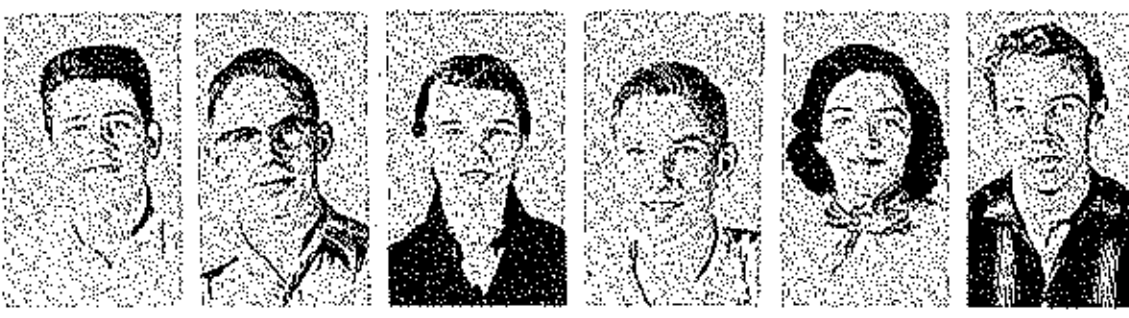
Parkhurst, Jenny Frank
Prince, James Franklin
Procter, Barbara Ellen
Pyles, Rodatta June
Rahum, Lois Marie
Reed, Don Foster



Reynolds, JoAnne Mae
 Ruffe, George David
 Rush, Jimmy Dale
 Scott, Howard Wayne
 Scott, Robert Ray
 Scribner, Forrest Gene



Sears, Peggy Dale
 Shaw, Edward Lee
 Small, Don Kelly
 Stark, Joyce Ann
 Steinhilber, Darlene Irene
 Thomas, Frances Dolores



Thomas, Larry David
 Thorson, James Clark
 Thorson, Judith Carrie
 Thorson, Thomas Frederick
 Trammell, Loves Jay
 Wallis, James Larry





McKinlay, Clifford
 Star, Bill
 Fry, Jane
 Allen, Robert
 Apparon, Leroy
 Atkinson, Carolyn



Bealord, Diana
 Boon, Rebecca
 Branstetter, Martha
 Bunchett, Elizabeth
 Campbell, Jerry
 Cartwell, Robert



Carroll, Ronald
 Carson, Jo Ellen
 Christian, Tommy
 Conner, Dolores
 Cooper, Wayne
 Cox, Norma



Dezman, Carol
 Dinwiddie, Lois
 Duffield, Dolores
 Duncan, Shirley
 Dueston, Robert
 Dutcher, Joyce



Eiken, Geraldine
 Yarbrough, Eugene
 Forrester, Richard
 Frank, David
 Baughman, Ruby
 Gies, James

Graham, Doris
 Graham, Gail
 Gunn, William
 Harvey, Roberta
 Haynes, Norma
 Heather, Joan



Helton, Robert
 Kenley, Tommy
 Mappard, Gwendorn
 Hibdon, Howard
 Holder, Virgil
 Holdt, Ralph



Bill Phillips
 Howser, Nellie
 Howser, Sharon
 Hurtubise, Roger
 Imler, Wanda
 Jones, Ronald



Kehr, Joyce
 Kidwell, Ryan
 Knapp, Mike
 Lake, Harold
 Lowery, Doris
 Maher, Kay



Britt, DeLois
 White, Joe
 Williams, Della Fern
 Wise, Linda
 Woods, Tommy
 Woolley, David





Martin, John
 Melton, Barbara
 Meyer, Carol
 Meyer, Mary
 Morris, Verlie
 McDaniels, Eugene



Don Nickels
 Phillips, Walter
 Pope, Charles
 Rd., Donas
 Reynolds, Charles
 Robbins, Rosa Lee



Sanney, Barbara
 Schuler, Carol
 Schultz, Gann
 Shalhoub, Carol
 Shephard, Don
 Sidebottom, Dallas



Sidebottom, Harley
 Simmons, Wanda
 Smith, David
 Spratt, Jerry
 Stevens, Joyce
 Stryker, Robert

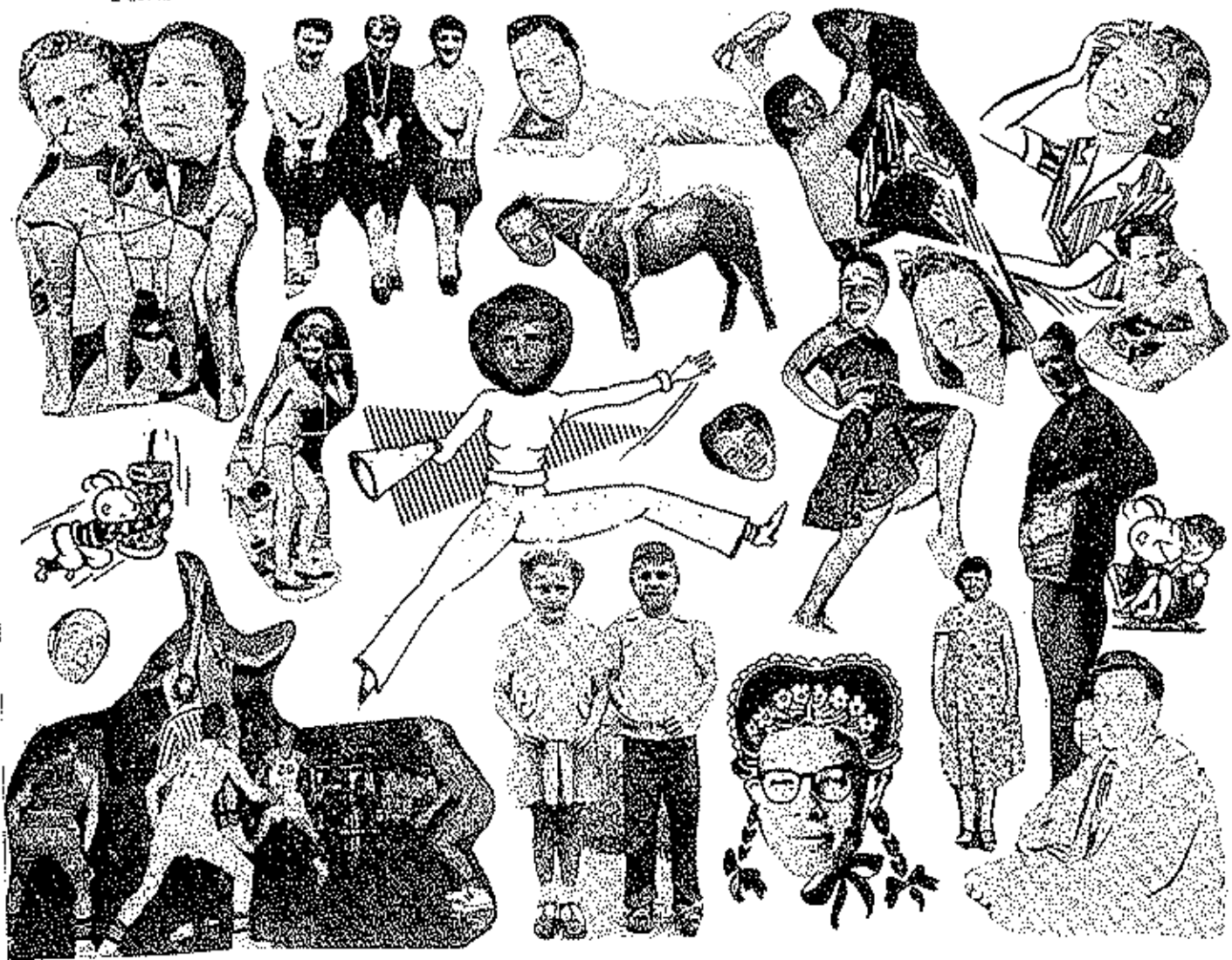


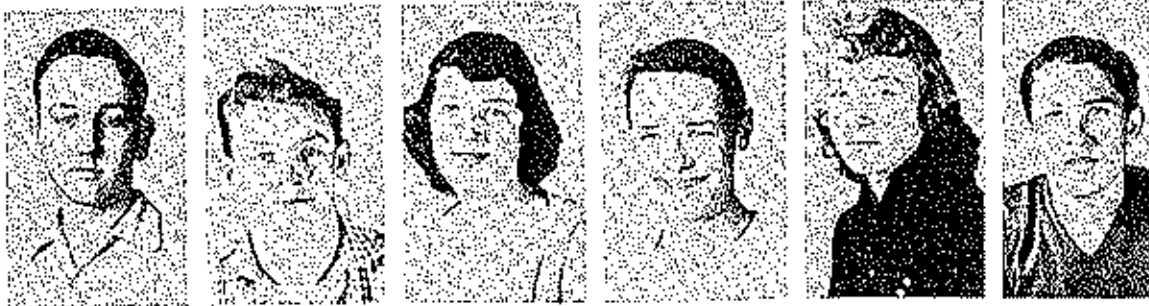
Sullens, Lonnie
 Taylor, Carolyn
 Taylor, Martha Darlene
 Taylor, Mary Arlene
 Taylor, Pat
 Thompson, Branda



Thompson, Dennis
 Thomson, Buents
 Thornburgh, Charlon
 Trammell, Gede
 Twitchell, Rex
 Tyler, Jack

Tyler, Denny
 Upton, Don
 Vann, Howard
 Vernon, Ruby
 Villa, Lucille
 Wallace, Fatsy





Hoskins, Barry
 Kays, Darrell
 Bond, Ruth Ann
 Abercrombie, John
 Ahart, Winona
 Abernison, Jack



Allen, Donna Sue
 Apperson, Jackie Edward
 Atchberry, John Gayle
 Barton, Billie Joe
 Bashore, Norman Joe
 Baquet, Melva Elizabeth



Beanland, Edward Leroy
 Bellamy, Linda Carol
 Blankenship, Roy Stanley
 Bond, Delois Jean
 Bond, Larry Ralph
 Bond, Raymond Lee



Bowden, Harvey Norris
 Bowden, Sue Ann
 Campbell, James Willard
 Carpenter, James Willard
 Cedeno, Alvin Edward
 Coffman, Brenda Joyce



Cooper, Roy A.
 Cornett, Harold Duwana
 Craig, Mike Ben
 Crona, Jackie Anne
 Davies, Sandra Kay
 Denton, Gale Eugene

Dinwiddie, Gladys Marie
 Eisen, Linda Louise
 Elliott, Betty Sue
 Ekstein, Sharon Kay
 Falmer, Mary Jo
 Ford, Larry Joe



Glenon, Bonnie Kay
 Green, Agneta Sue
 Hendley, Alan Ed
 Hoyman, Barbara Oneta
 Hayes, Charles Edward
 Moas, Joyce Sylvia



Hinda, Billie Sue
 Houston, Sherry Ann
 Haggaman, Eugene Everett
 Imler, Barbara Diane
 Jackson, Leota Marie
 Jarrott, Linda Lee



Loelle, Gerald Wayne
 Loving, Thomas Lee
 Manning, Sharon Elizabeth
 Morgan, Terry Lee
 McMilla, Nancy Jane
 Nickell, Larry Ray



Jeffries, Janice Kay
 Jeffries, Jerry Robert
 Jenkins, Robert Dennis
 Jester, Donna Carol
 Jobb, Paula Jean
 Kays, James Arlen





Ople, Stanley Ray
 Pace, David Anthony
 Pote, Donald Brent
 Cochran, Anita Louise
 Potzmann, Gary Frank
 Andhill, Virginia Sue



Reynolds, Billy Sue
 Robinson, Sharon
 Rogers, Lewis Edward
 Rusk, James Roscoe
 Schick, Linda Lee
 Schupp, Shirley Rose



Stone, Shirley Ann
 Sparks, Renee
 Spencer, Donna Sue
 Spratt, Helen Marie
 Stewart, Bob Ellis
 Stickney, John Preston



Taylor, Joyce Ann
 Thacker, Carolyn Kay
 Thomson, Pat Joann
 Thorson, Walter
 Throner, Jerry
 Tracy, Mary Ann

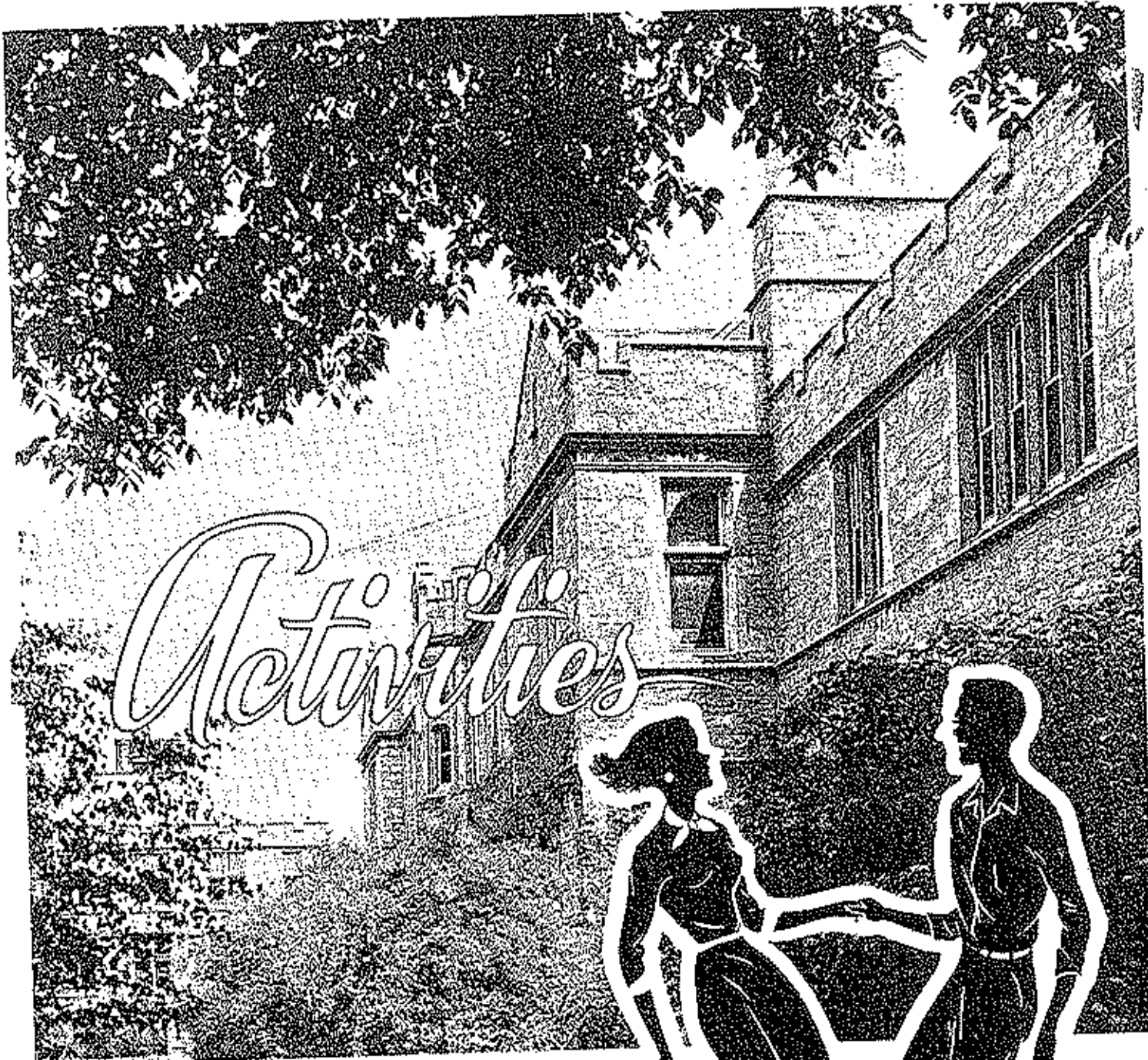


Turpin, George
 Vernon, Ann
 Vernon, Beth Marie
 Wahl, Walter Eugene
 Weeks, Barbara Ann
 Williams, Wanda



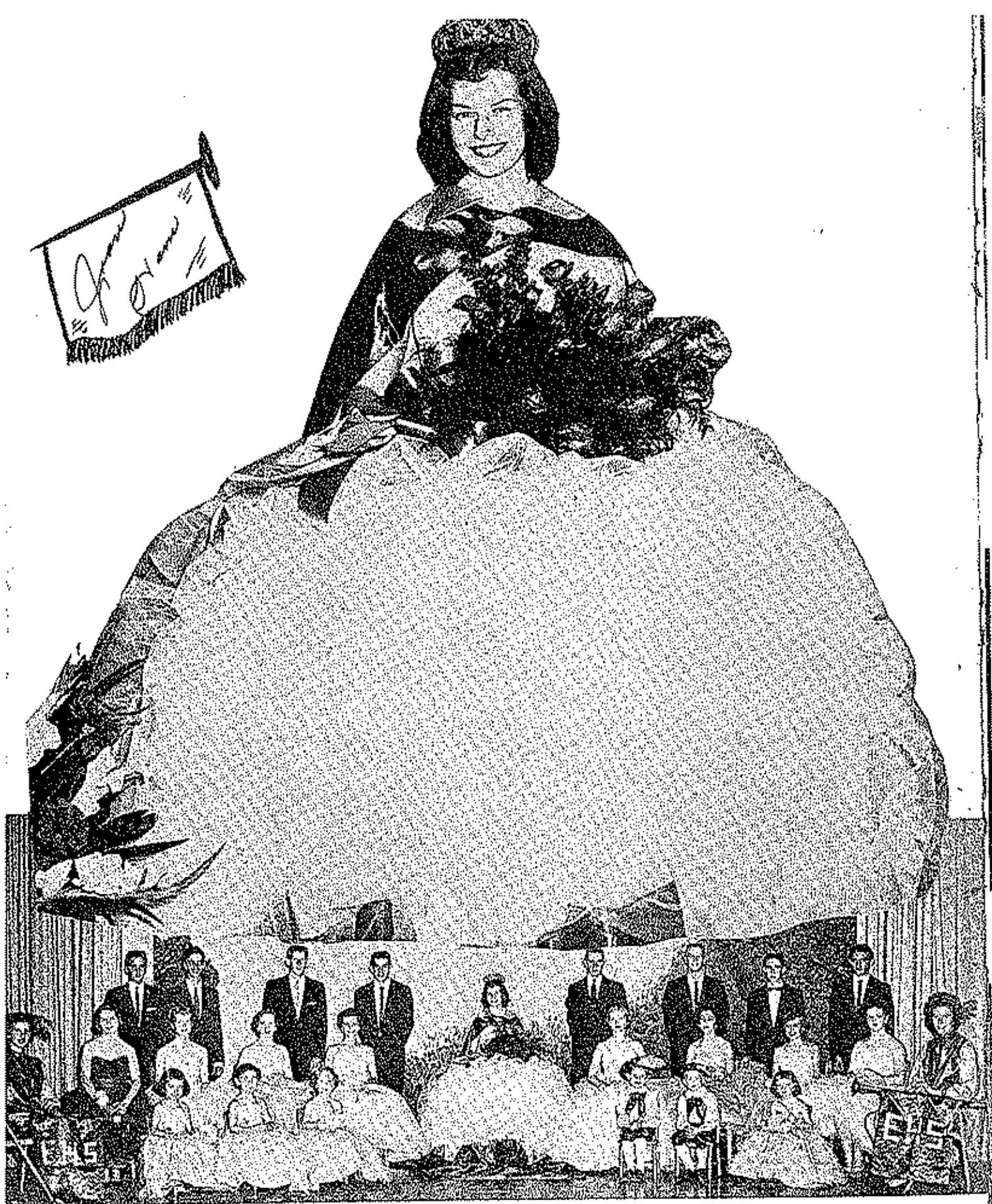
Wilson, Kenneth Ray
 Wood, Larry
 Wood, Vencil
 Wyrick, Paul
 Toque, Cecil Sidney





Activities





STANDING: Mike Craig, Don Shepard, Frank Clark, Don Hall, Sammy Esmer, Joe Hammond, David Wooley, Charles Hayes. SEATED: Linda Dixon, Ann Vetter, Nellie Howser, Lois Rasmus, Neva Paston, Joan Ham, Alberta Green, Janice Dyer, Carol Sheehart, Nancy McMillan, Donna Jetter.



Maroon and Gold Staff

SEATED: Shirley Apperson, Gordon Davidson, Bill Gerhart, Rita Gamphor, Pete Gattermeir, Neva Pearson, Judy Cunningham, Betty Denny.
 STANDING: Ardyle Mayer, Mr. William Cheney, Ann Beard, Ruth Althoff, Ruth Rowner, Barbara Twitchel, Lois Agen, Donna Ren, Bill Phil-
 ips, Roberto Harvey, Ruth Kidwell, Mary Senley, Betty Reynolds, Nellie Heldstab, Francis Loving, Ronnie Brown, Robert Allen, Robin Kettler,
 Bill Bear, Sue Davies, Tommy Hanley, Mary Mayer, Jane Fry, John Campbell, Jo Ann Heather, Mrs. Oliver Stephens, Janice Oyer, Hec Con-
 lon.

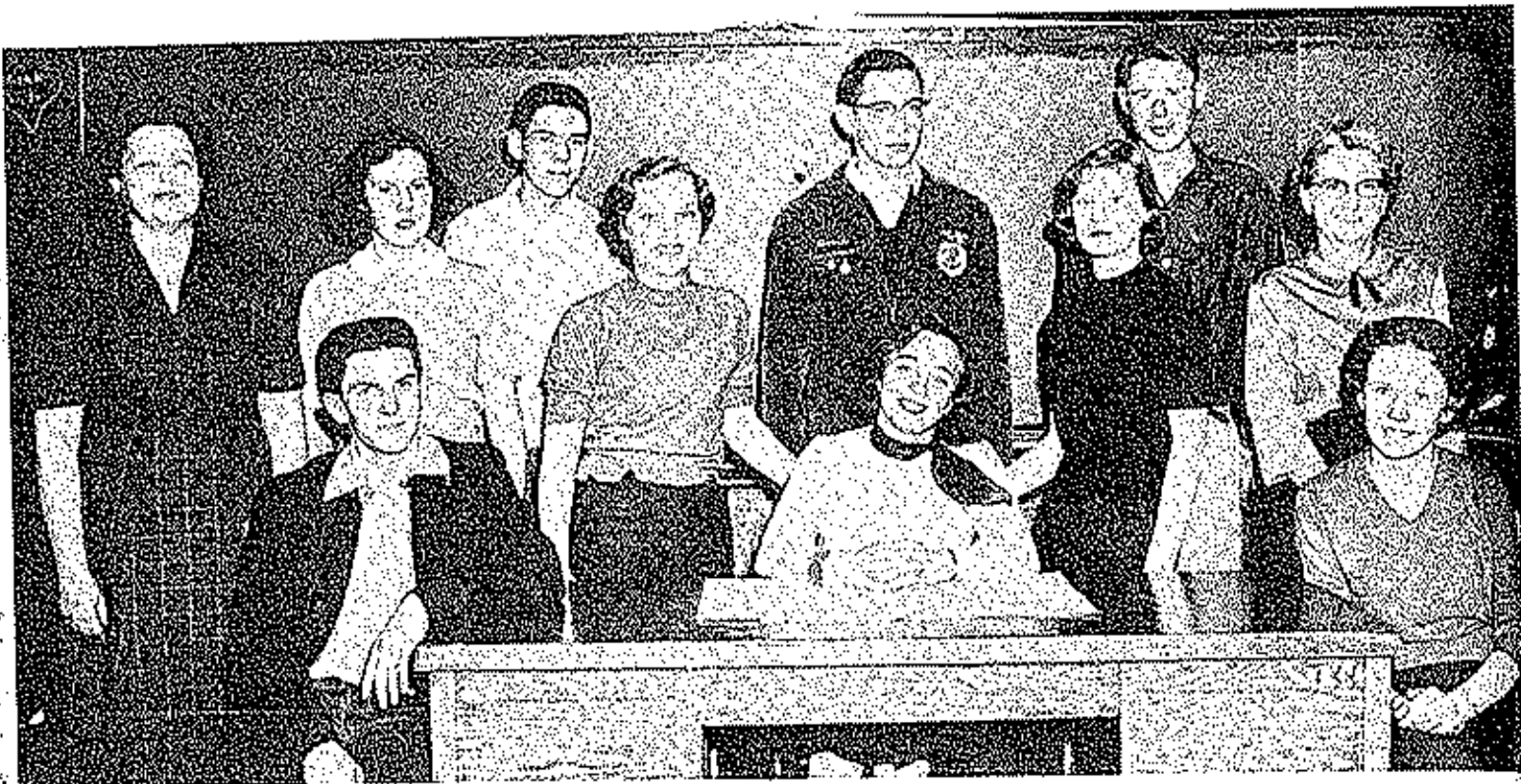


Editor - Rita Gamphor

- Editor.....Rita Gamphor
- Associate Editor.....Pete Gattermeir
- Business Manager..... Bill Gerhart
- Sports Editors..... Gordon Davidson
Francis Loving
- Feature Editor.....Betty Denny
- Art Editor..... Nellie Heldstab
- Scandal Editor.....Sue Davies
- Head Typist.....Neva Pearson

Ed. And Asst. Ed.
 Rita And Pete





Referet Staff

SEATED: Steve Hutchison, Judy Maxwell, Ann Beard. STANDING: Mrs. Roy Lane, Norma Cox, Bill Gunn, Kay Mohr, David Currence, Ellen Ellett, Benny Jackson, Mrs. Oliver Stephens.



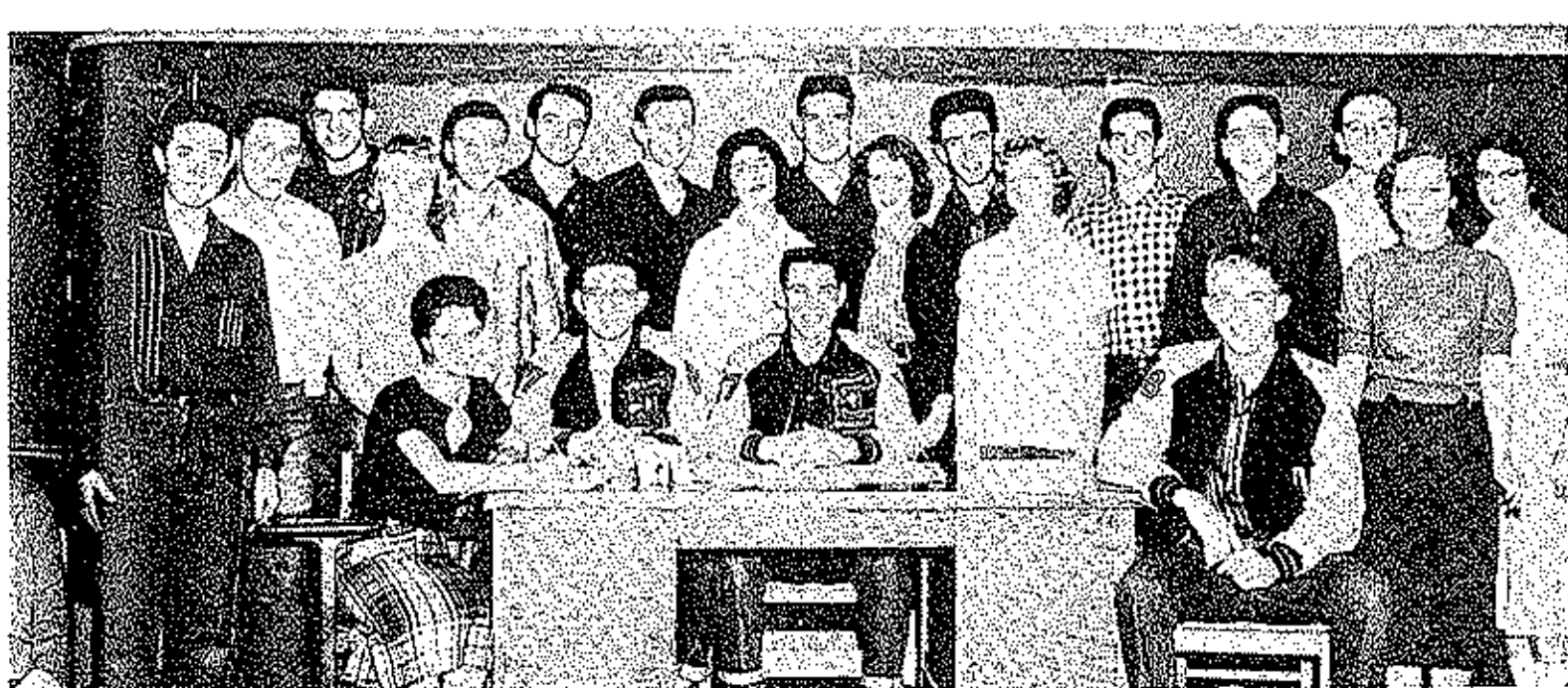
Judy Maxwell - Editor



Steve Hutchison - Business Manager



Ann Beard - Art Editor



Student Council

SEATED: Neva Pearson, Albert Graham, Joe Wood, Douglas Kehr. STANDING: Terry Morgan, Malcolm Mohr, Don Reed, RHA Gamphor, Mike Craig, Bob Wyrick, John Heather, Clifford McKinley, Lee Conlon, Bill Gerhart, Alberta Green, Ronald Brown, Bill Star, Barry Hopkins, Kay Mohr, Lotta Jackson.



Neva Pearson Secretary



Joe Wood President



Albert Graham Vice-President



Doug Kehr Treasurer



Carole Maher, President



Ann Beard, Vice-President



Jeannette Knerschild, Sec-Treas.

1st Semester



Honor Society

SEATED: Jeannette Knerschild, Carole Maher, Ann Beard. STANDING: John Campbell, David Currence, Ruby Runyon, Don Reed, Bob Wyrick, Mrs. Lynn Lapardus, Robin Keiffer, Judy Murrell, Benny Jackson, Peter Gattornolo, Betty Denny, Frank Clark, Mary Sealey, Wayne Scott, Jess Conlon, Betty Diawiddle, Kellie Heldstab, Alberta Green, Betty Reynolds, Barbara Graham.

2nd Semester

Benny Jackson, Vice-President

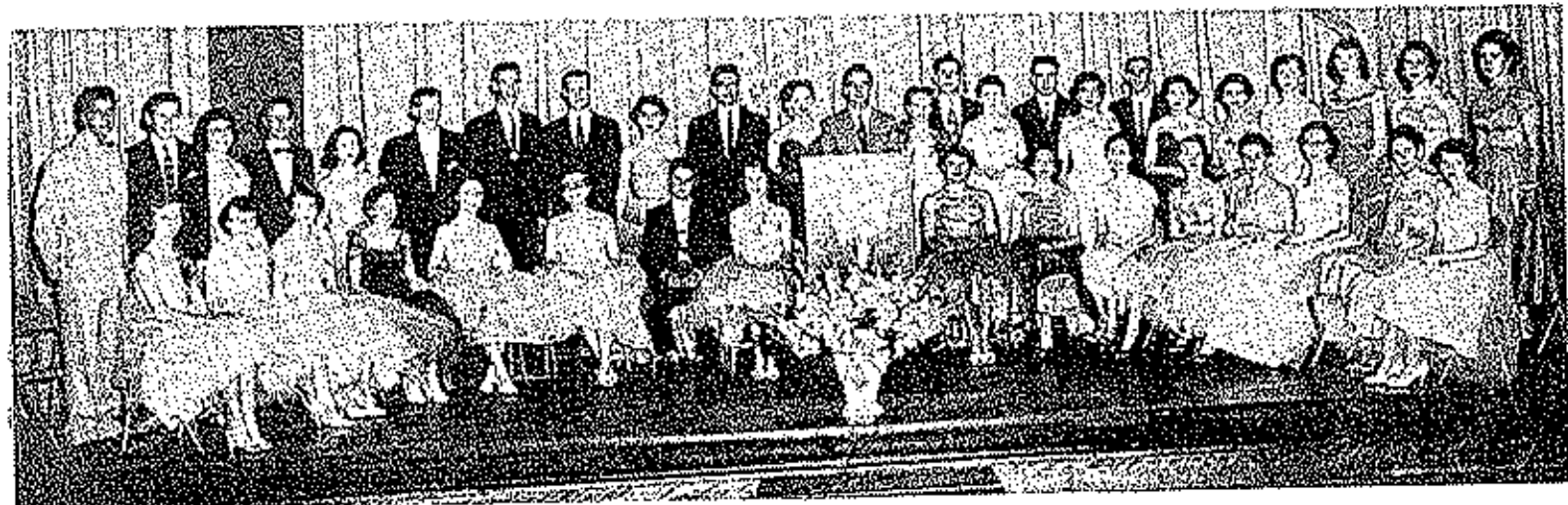


Wayne Scott, President



Mary Anne Sealey,
Sec-Treas.

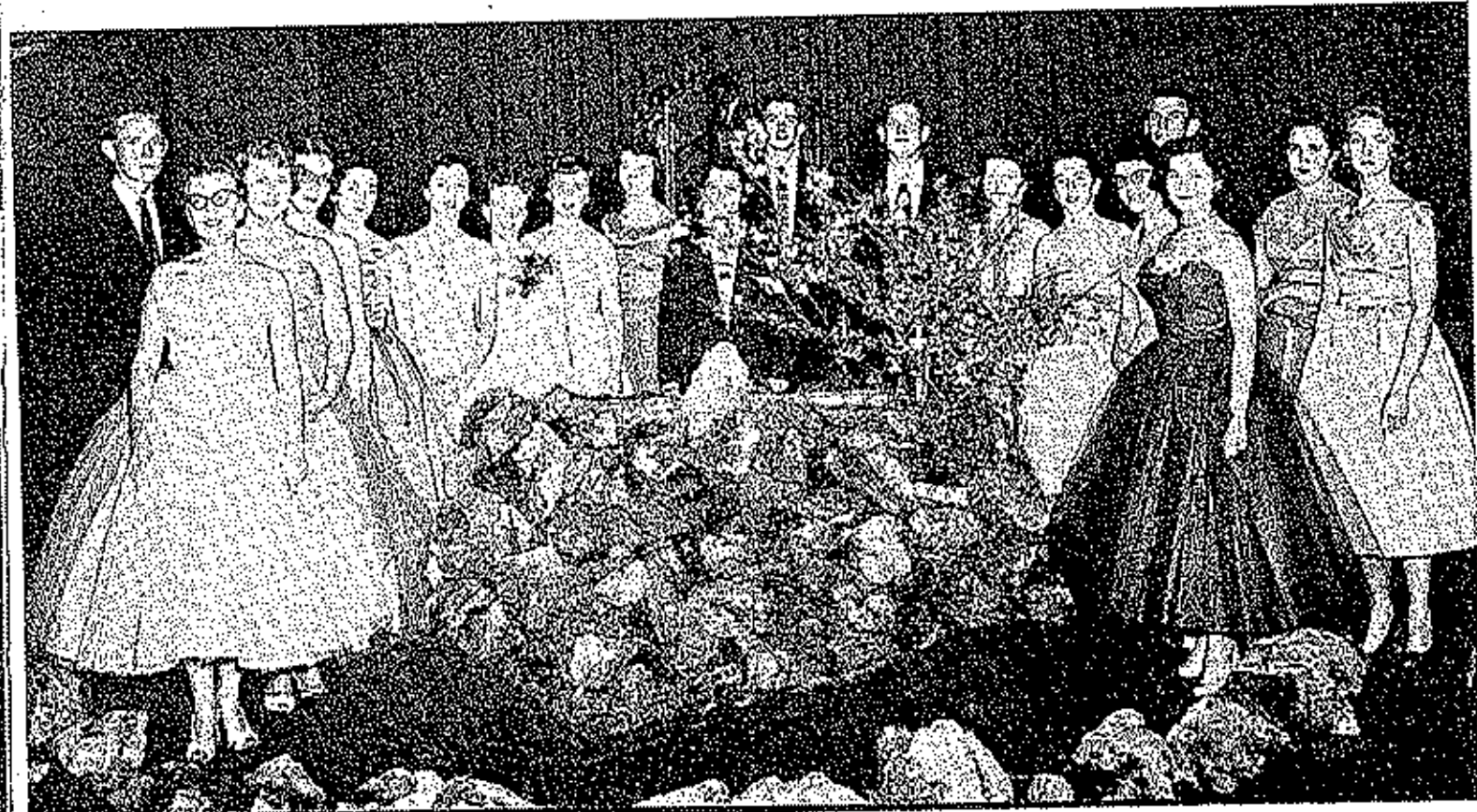




"Three coins in the fountain,
 Each one seeking happiness,
 Thrown by three hopeful lovers,
 Which one will the fountain bless."

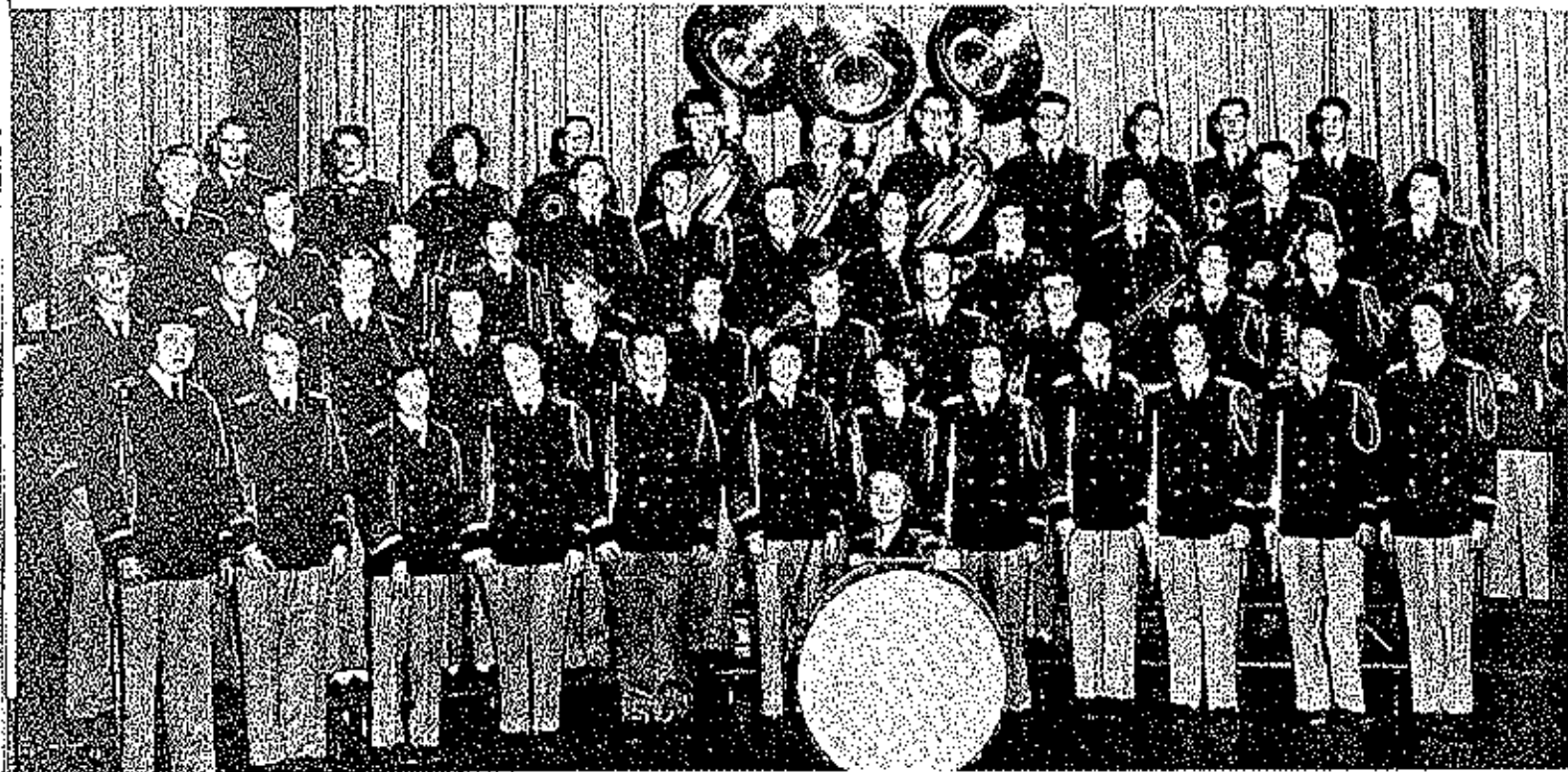
Not three lovers but many dreamily waltzed with their ladies fair by the gushing fountain. The Rainbow colors of the girls' formal reflected in the shining ripples of the water as it bubbled forth. Soft laughter and sentimental music enhanced the romantic atmosphere of the scene. As they cast their coins into the glistening water, perhaps each wished for wisdom, happiness and love on an April night.

"Many coins in the fountain,
 Through the ripples how they shine,
 May each wish be granted,
 May each heart wear a valentine."





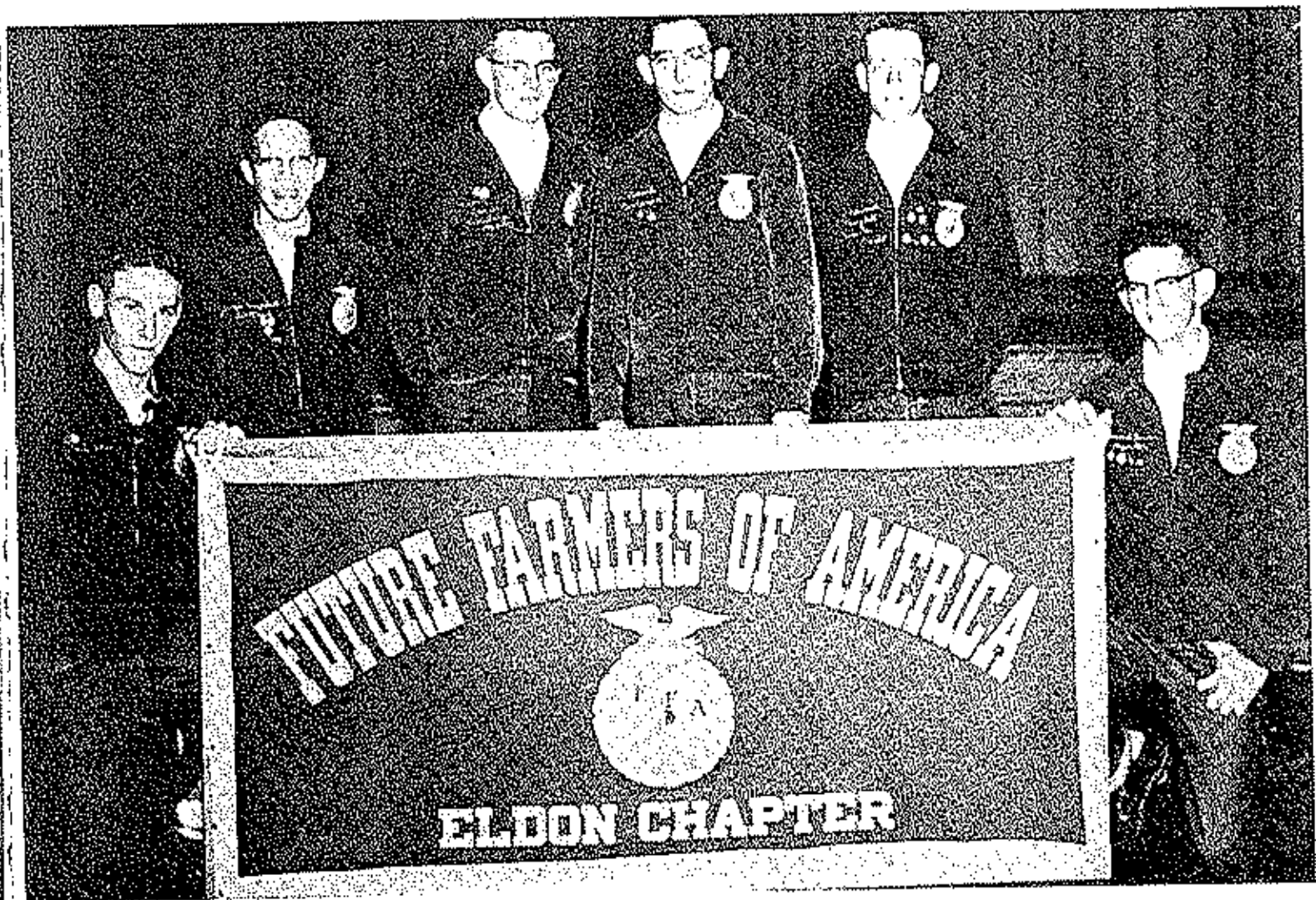
Mixed Chorus



Band

Girls' Glee Club

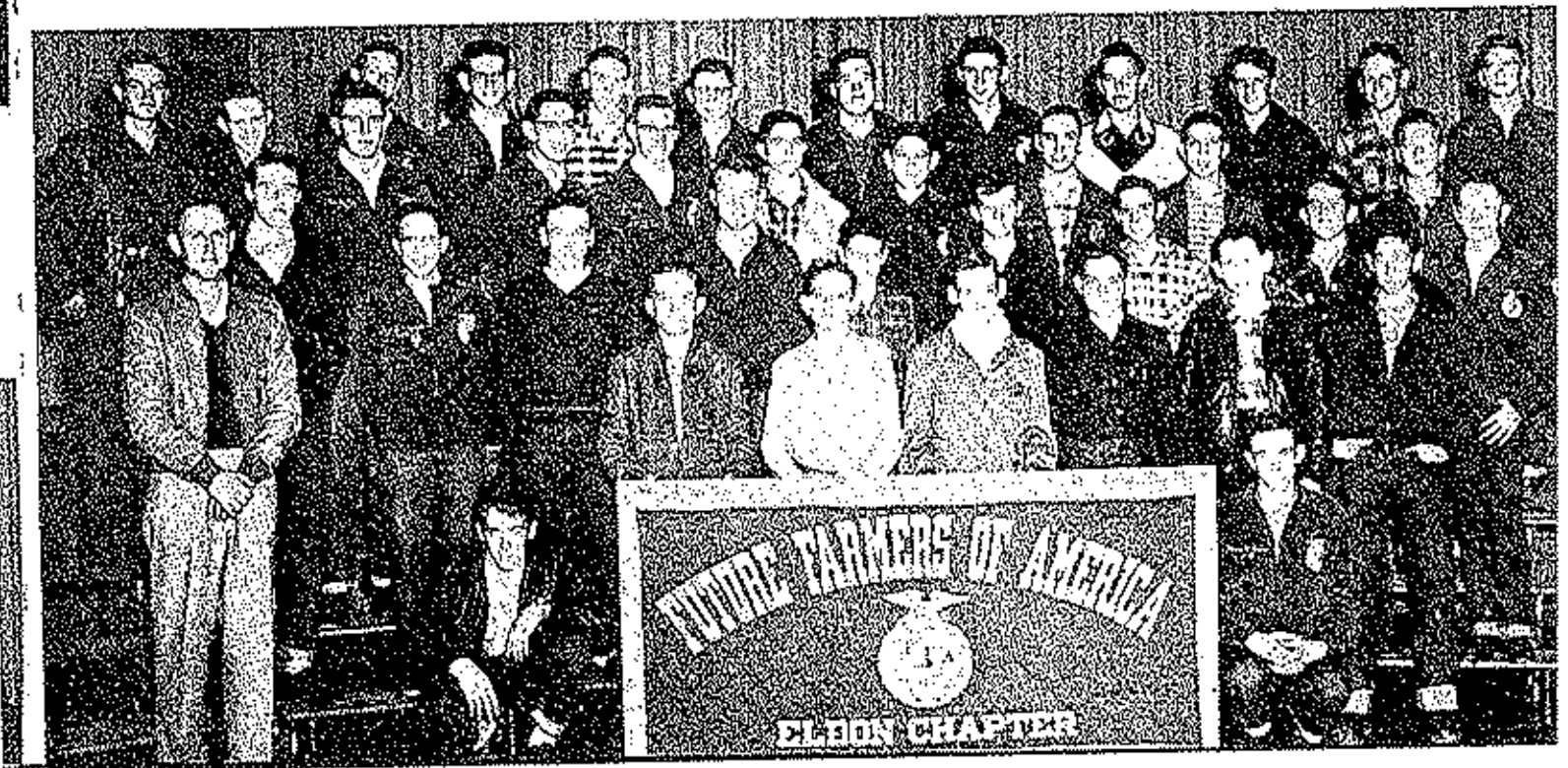


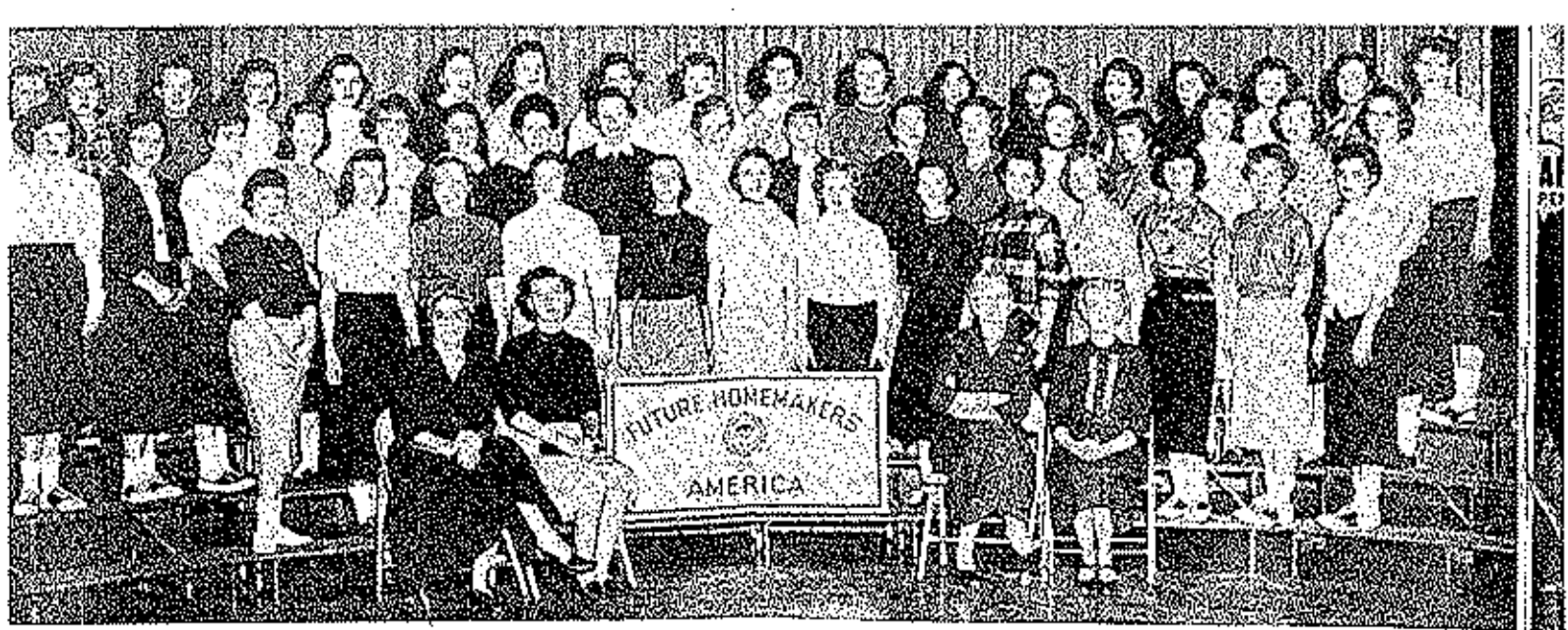


F.F.A.

LEFT TO RIGHT: Treasurer, David Frank; Sentinel, Jerry Campbell; President, Sam Benner; Secretary, Dave Currence; Vice-President, John Campbell; Recorder, Howard Vann.

F.F.A.





F. H. A.

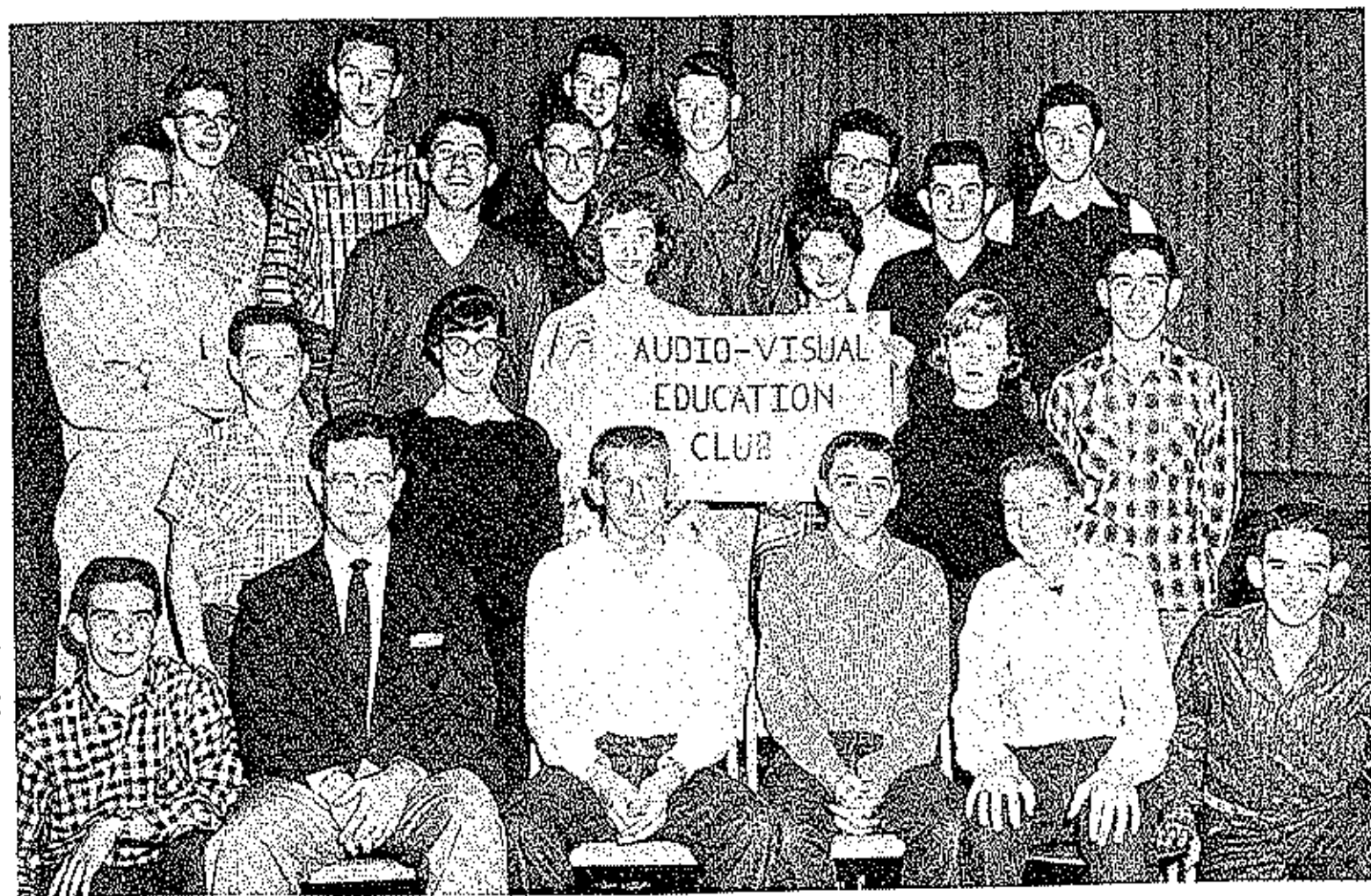


Hostess Club



Library Club

FIRST ROW: Mrs. Ruth Lepardus, Darlene Steenbunton, Ruth Howser, Donna Roe, Ruby Ryan. SECOND ROW: Barbara Bennett, Billie Green, Diane Shaw, Alysia Meyer, Joan Ham, Don Vaughn, Pete Gattermeir, Lovea Trommel, Norma Cox, Norma Scott, Jano Martin, Gwendora Heppard, DeAnn Haynes, Doris Graham. THIRD ROW: Raymond Bond, Linda Wigg, Joan Lowry, Virgil Holder, Iselle Villo.



Audio-Visual Education Club

FIRST ROW: Ronnie Brown, Mr. Dowler, Frank Clark, Howard Apperson, Eddie Shaw, Gene Sommer. SECOND ROW: Jerry Thrower, Audra Colahan, Sue Davies, Neva Pearson, Eileen Ebberts, John Meyer. THIRD ROW: Gordon Davidson, Gerald Bowlin, Hervey Bashore, Kenneth Thomas, Bob Stryker, Gary Gampfer, Beeny Jackson, Francis Loving, Don Hall, C. D. Verson.



C.O.E.

FIRST ROW: Steve Hutchison, Barbara Albertson, Audrey Bond, Cathy Absher, Jon Wood, Larry Cornon. STANDING: Malcolm Mohar, Danny Holdt, Don Keys, Jim Chelmers, Marvin Alderman, Mickey Fryor, Tommy Howser, Richard Keht, Mr. Frank Drake.



Sports

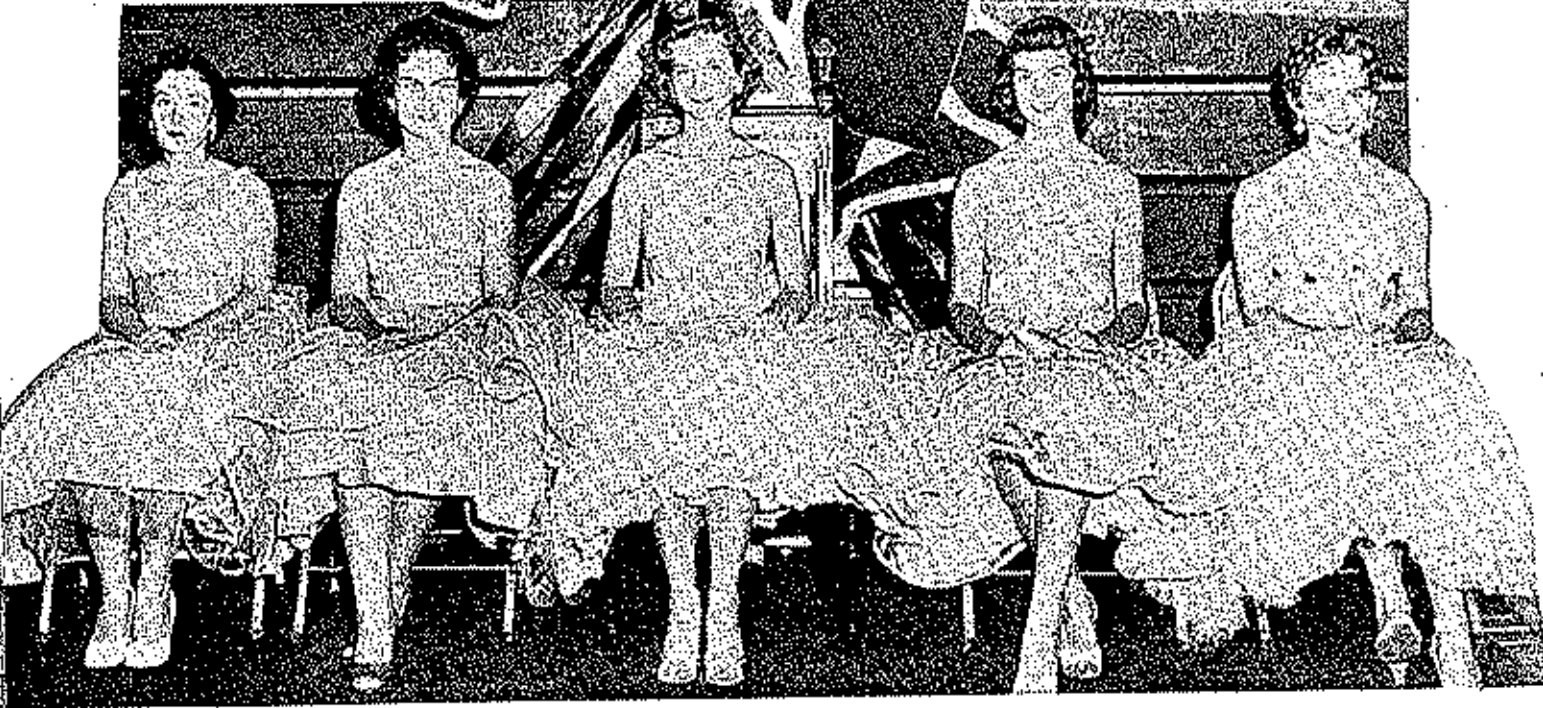




QUEEN ALBERTA



ALBERTA GREEN AND GERALD JENKINS



MAIDS
Joan Ham
Mary Anne Senley

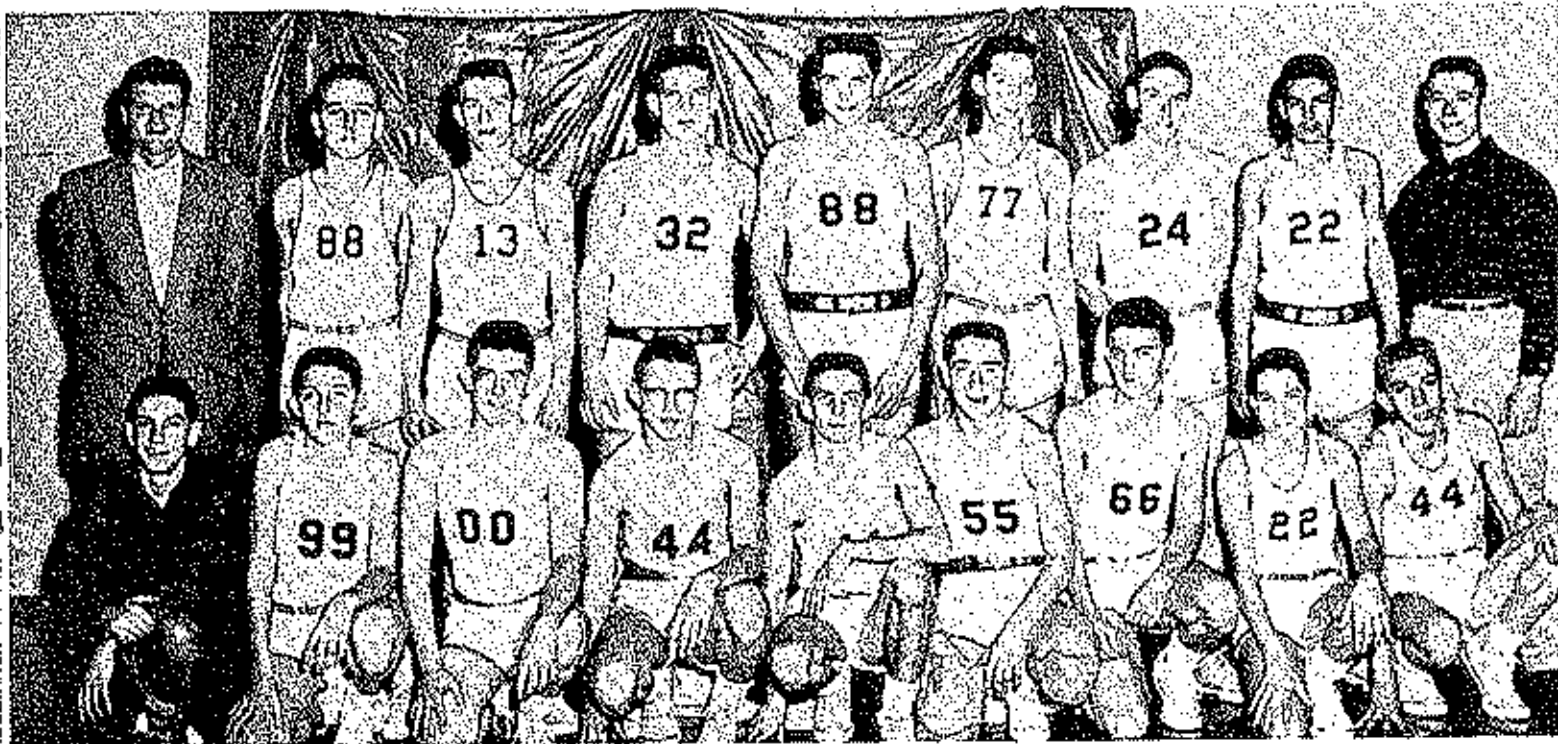
QUEEN
Alberta Green

MAIDS
Delores Borker
Ardyce Meyer



"A" Team

FIRST ROW: Manager: Bill Phillips, Sammy Sanner, Frank Clark, Albert Graham, Joe Wood, Manager Charles Thornbrugh. STANDING: Coach Harold Weir, Joe Hammond, Gerald Jenkins, Douglas Kehr, Wayne Scott, Bill Gerhart, Don Reed.



"B" Team

FIRST ROW: Manager-Bill Phillips, Larry Nickell, Charles Pope, Tommy Henley, Ronnie Brown, Ronnie Carroll, Charles Hayes, John Atchberry, Jim Whitaker. SECOND ROW: Coach Harold Weir, Barry Hoskins, Alan Keys, Clifford McKinley, Danny Small, Norman Bashore, David Frank, Donnie Thompson, Manager-Charles Thornbrugh.



Boys' Senior High Softball

KNEELING: Ronnie Brown, Albert Graham, Donnie Thompson, Robert Wyrick, Ronnie Catrol, Charles Pope, Joe Wood, Manager Bill Beer.
STANDING: Coach Harold Weir, Don Reed, Sam Banner, Doug Kehr, Danny Small, Bill Garhart, Joe Hammond, Manager Charles Thornbough.

Boys' Junior High Softball

KNEELING: Bruce Hlavacek, Mike Moulky, Don Vann, David Pace, John Altsherry, Larry Shulte, Dennis Vanhoosier.
STANDING: Coach Harold Weir, Allan Kaye, Charles Hayes, Larry Ford, Louis Rogers, Barry Hoskins, Larry Nichols, Larry Bond, Bill Beer.





"E" Club

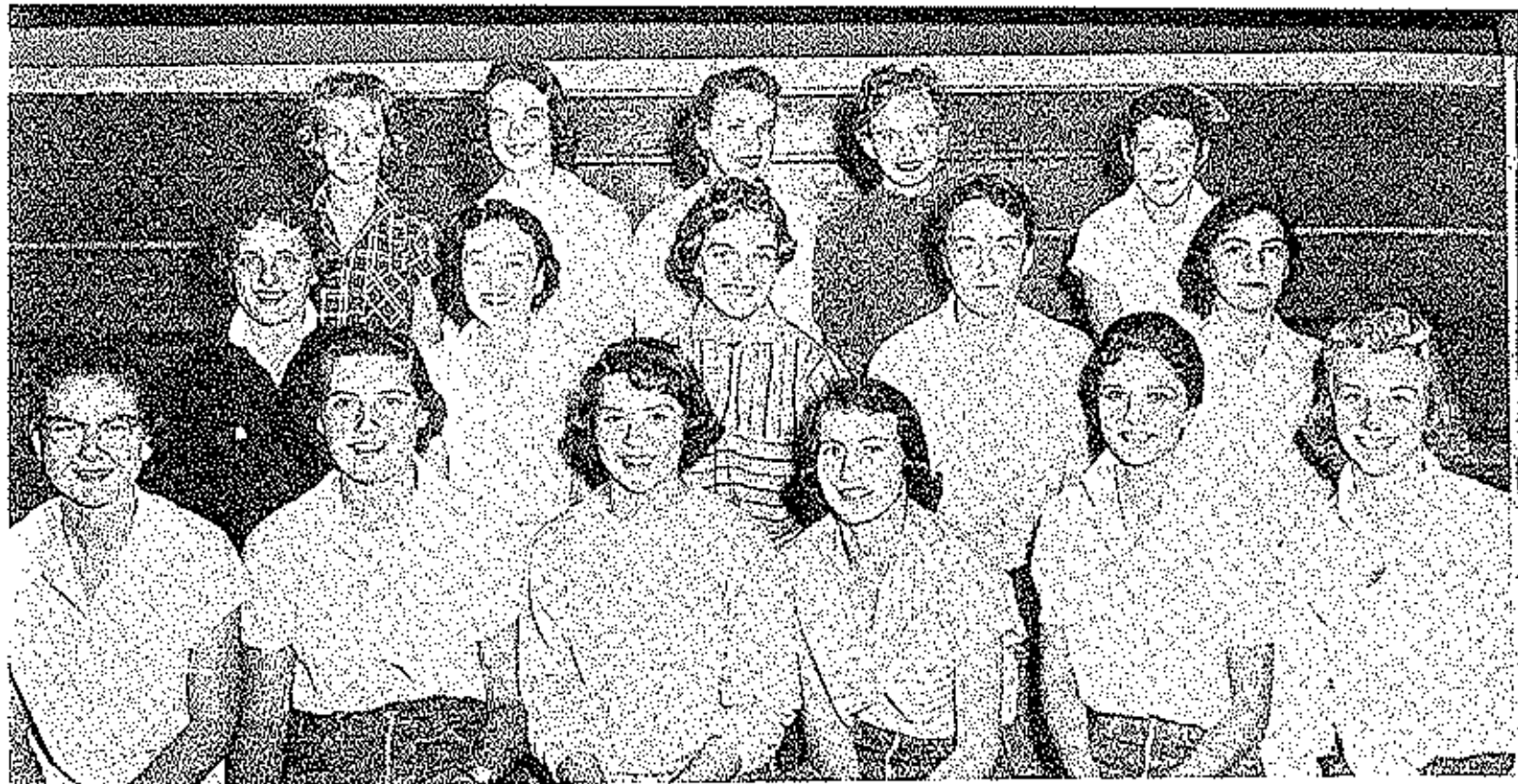


"A" Team Cheerleaders

Nita Gompdor, Sue Davton, Pat Callison, Ilee Conlan, Nava Pedron,

"B" Team Cheerleaders

Misty Meyni, Janice Dyer, John Hasher, Jane Fry, Rosie Robbins.



Girls' Senior High Softball

FIRST ROW: Ardye Meyer, Beth Kidwell, Ronie Robbins, Carole Meyer, Nava Pearson, Rita Gamphor. SECOND ROW: Shirley Bond, Dolores Barker, Linda Hickey, Joyce Stack, Lucille Willie. THIRD ROW: Alberte Green, Joan Nam, Ioannette Kneruschold, Mary Ann Sealey, Susan Thompson. NOT PICTURED: Judy Cunningham, Sue Davina.

Girls' Junior High Softball

FIRST ROW: Barbara Weeks, Linda Stuck, Leotta Jackson, Anita Cochran, Jackie Crane. SECOND ROW: Donna Jancar, Barbara Harwood, Sharon Manning, Sandra Davis, Shirley Stone. THIRD ROW: Donna Allen, Betty Elliott, Donna Spencer, Linda Eiken.





Senior High Volleyball

FIRST ROW: Jeannette Koernschield, Alberta Green, Rita Gamphor, Joan Ham, Judy Gunningham, Cathy Absher, Carol Taylor, SECOND ROW: Coach Hodges, Ariana Taylor, Pat Taylor, Betty McKinley, Sue Davies, Nellie Kowner, Manager, Donna Brown, THIRD ROW: Joyce Black, Buena Thompson, Ruth Kidwell, Jodyce Meyer, Shirley Bond, Dolores Barker, Manager Ruth Apperson.

Junior High Volleyball

FIRST ROW: Leotta Rogers, Betty Smock, Janice Vernon, Sharon Manning, Barbara Ratness, Pat Thompson, Jackie Crane, SECOND ROW: Coach Hodges, Donna Allen, Leotta Jackson, Billie Sue Hinds, Shirley Stone, Sue Garhart, Carol Kehr, Manager Donna Brown, THIRD ROW: Pat Reynolds, Mary Tedrick, Joyce Begley, Carol Bellamy, Argetta Green, Betty Elliott, Manager Ruth Apperson.

