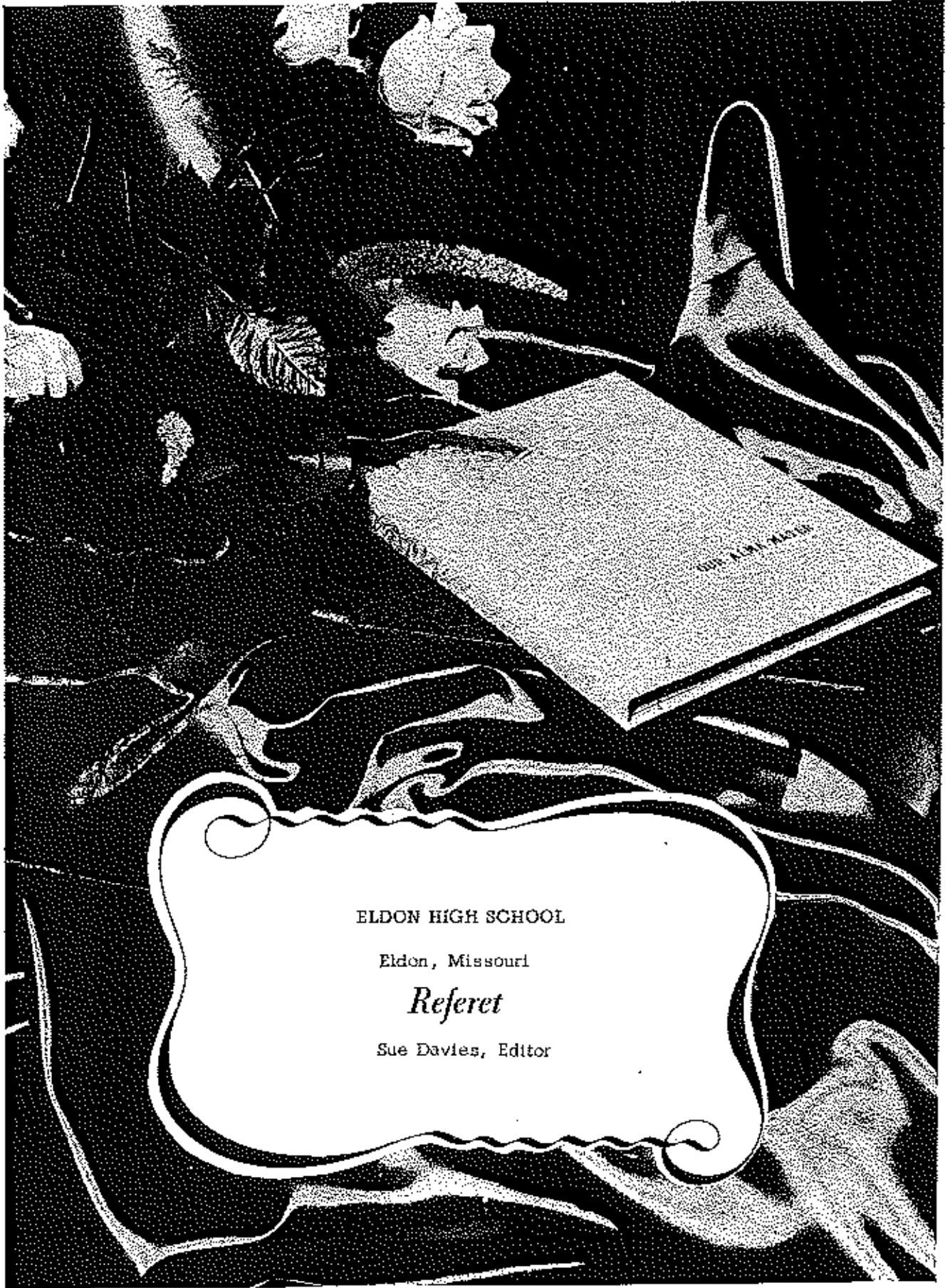




REFERET



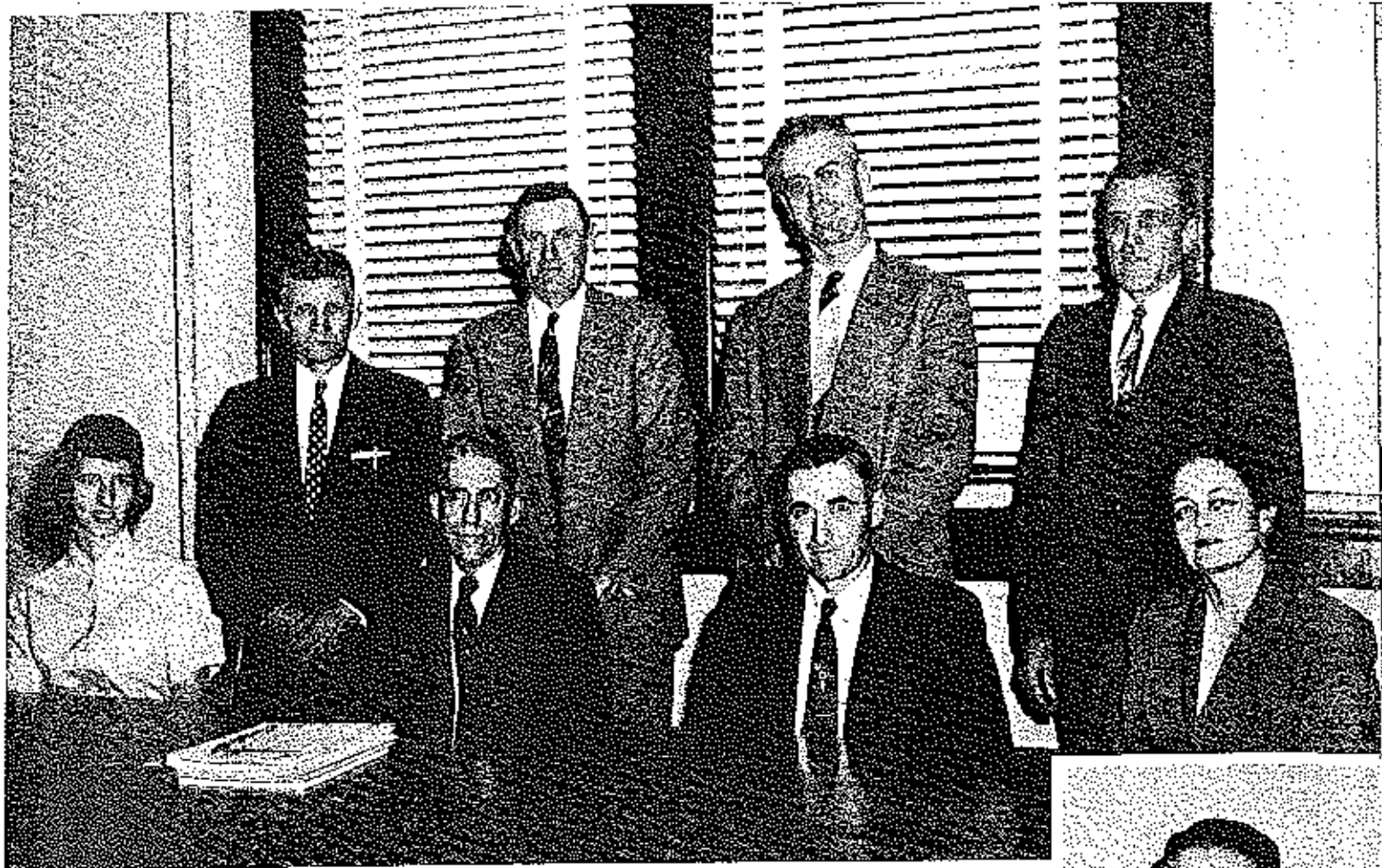


ELDON HIGH SCHOOL

Eldon, Missouri

Referet

Sue Davies, Editor



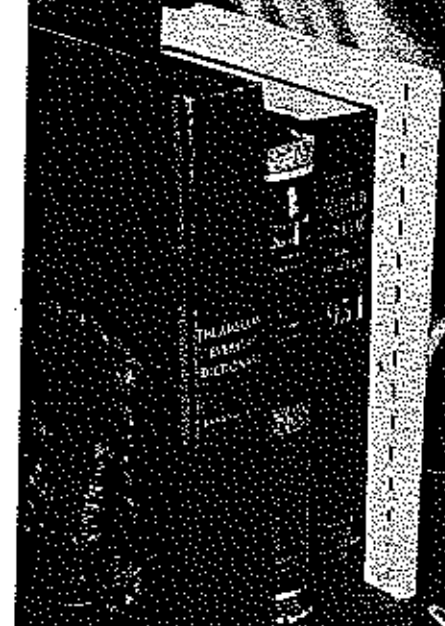
*Board of Education of Eldon
Administrative Unit R-1*



SEATED: Mrs. Betty Hirschman, Secretary; Dr. C.H. Parkins, Vice-President; Mr. Alton Hendricks, President; Mrs. W.W. Harvey, Member. STANDING: Mr. Louie Apperson, Member; Mr. Tom Banner, Member; Mr. Dean Clawson, Member; Mr. B.R. Collier, Superintendent.

INSERT: Mr. Dewey Jackson, deceased. Mr. Tom Banner was appointed to replace him for the 1957-58 school term.

Faculty





JAMES BLACKBURN
SPANISH & ENGLISH



MARTHA SPINKS
ENGLISH & SPEECH



HAROLD WEIR
Coach



OLIVER STEPHENS
Social Studies



ED HOTZGS
Girls' Physical Education



FRANK DRAKE
Co-Ordinator



ALICE VERNON
World History



LELAND YOUNG
Chemistry



FREDA LANE
MATHEMATICS



JOHN BOWLER
SOCIAL STUDIES



SARAH E. BROCKMAN
ENGLISH & PUBLICATIONS

AUGUST JONES
SOCIAL STUDIES



WINNIE MAE ROHLFING
Home Making



DON BRASHEARS
Science



GERALDINE HALDIMAN
Music



EUNICE STEPHENS
Commerce



CLIFFORD GREENWAY
Vocational Agriculture



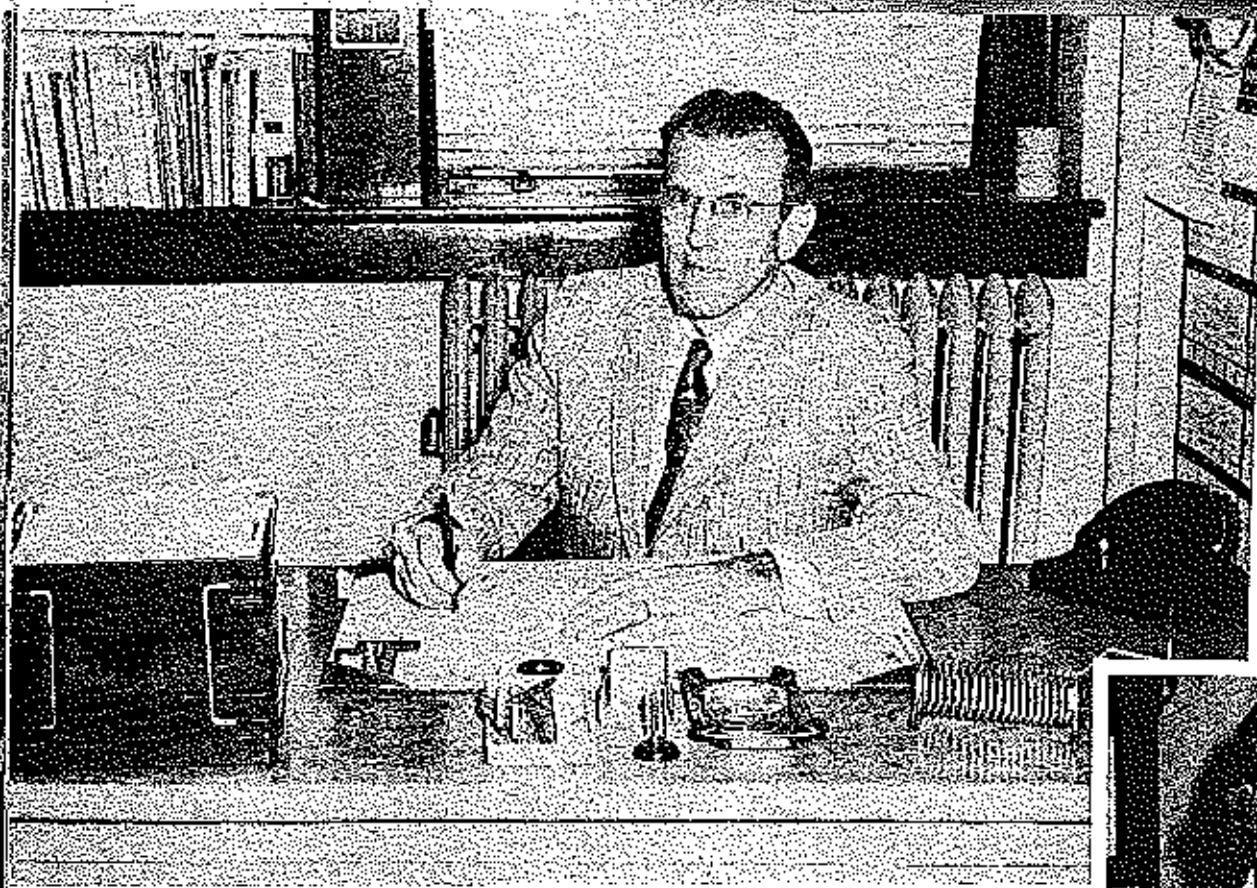
VIRGIL JURSENSMEYER
Industrial Arts



WILLIAM STEVENSON
GUIDANCE

RUTH LYFARDUS
LIBRARY





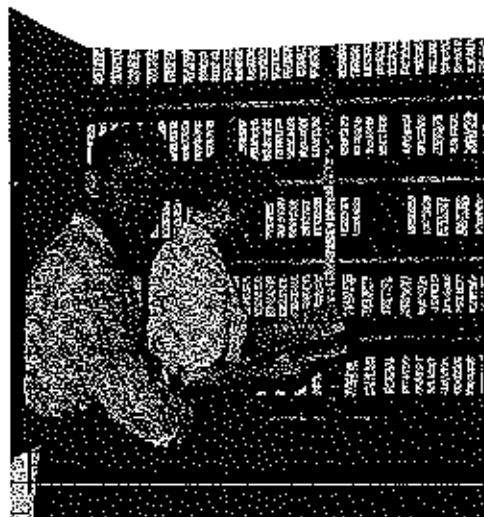
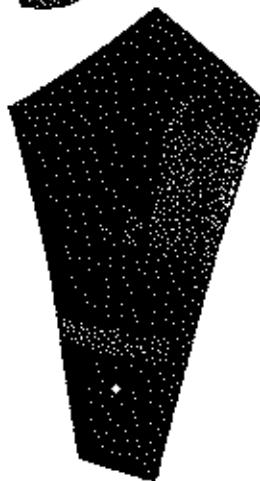
B. R. COLLIER
SUPERINTENDENT



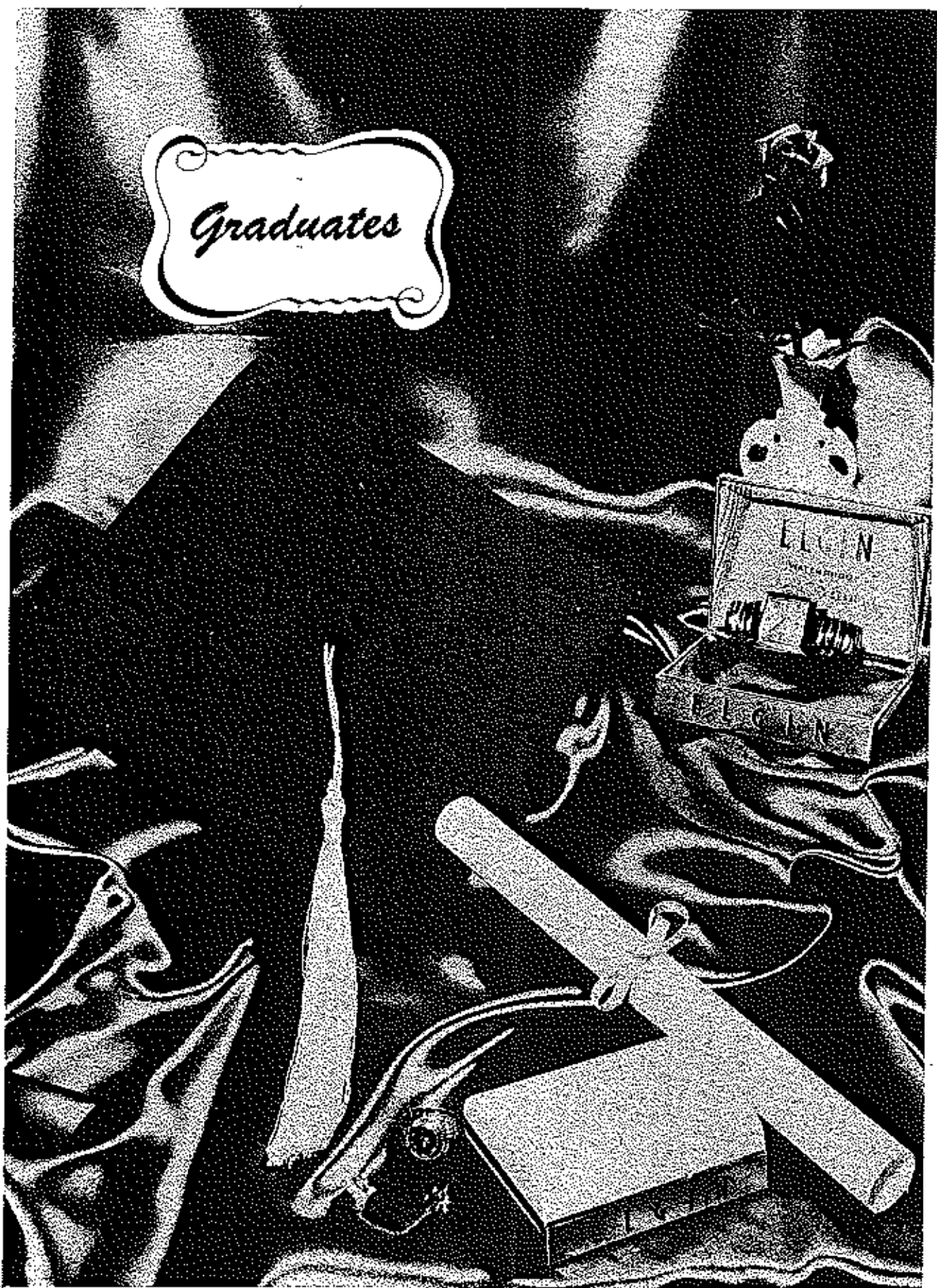
SECRETARY TO THE SUPERINTENDENT - Betty Hirschman
SECRETARY TO THE PRINCIPAL - Shirley Eadsen



MAX HUNTER
PRINCIPAL



Graduates





SUE DAVIES
 Referet Editor 4; "A" Cheerleader 3, 4; "B" Cheerleader 1, 2; Basketball Maid 4; Fall Festival Director 3, 4; Fall Festival 1, 2; Junior High Softball 1; Softball Manager 3, 4; Junior High Volleyball 1; Senior High Volleyball 3, 4; Messiah 1, 2, 3; DAR Contestant 4; Mobilgas Economy Run Winner 3; Maroon and Gold Scandal Editor 2, 3; Maroon and Gold Head Reporter 4; Pep Club 1, 2, 3, 4; Audio-Visual Education Club 2, 3, 4; Quill and Scroll Society 4; 3-1 Act Plays 4.

JEAN CONLON
 Honor Society 2, 3, 4; Band 1, 2, 3, 4; Dance Band 2, 3, 4; Mixed Chorus 1, 2, 3, 4; Girls' Glee Club 1, 2, 3, 4; Choral Clinic 4; Girls' State 3; Maroon and Gold Staff 2, 3; Maroon and Gold Editor 4; Pep Club 1, 2, 3, 4; "B" Cheerleader 1; "A" Cheerleader 2, 3, 4; Student Council 1, 2, 3; Fall Festival Maid 7; Fall Festival 1, 2, 3, 4; Referet Staff 4; Volleyball Intramurals 1, 2, 3; Junior High Volleyball 1; Senior High Volleyball 2; Junior High Softball 1; Monitor Captain 3; Monitor 2, 4; Messiah 1, 2, 3; Spring Show 1, 2, 3, 4; Music Contests 1, 2, 3, Quill and Scroll Society 4.



LINDA PACE
 Mixed Chorus 2, 3, 4; Junior High Volleyball 1; Senior High Volleyball 2; Girls' Glee Club 2, 3, 4; Pep Club 2, 3, 4; Maroon and Gold 2, 3, 4; Referet Assistant Editor 4; Junior High Softball 1; Senior High Softball 2, 3, 4; Girls' Glee Club President 4; Pep Club Vice-President 3; Spring Show 2, 3, 4; Fall Festival 1, 2, 3, 4; Monitor 2, 3, 4; Music Contests 2, 3, 4; Choral Clinic 2, 3, 4; Messiah 1, 2, 3; Volleyball Intramurals 1, 2, 3; Superintendent's Office 4.

AUDRA CALHOON
 Junior High Softball 1; Volleyball Intramurals 1, 2, 3; Tennis Intramurals 3; Maroon and Gold Staff 2; Maroon and Gold Associate Editor 4; Referet Staff 4; Fall Festival 1, 3; Fall Festival Skit Director 2, 4; Audio-Visual Education Club 2, 3; Young Scientists Club 4; Pep Club 1, 2, 3, 4; Messiah 1, 2, 3; Tri-County Speech Festival 4; Quill and Scroll Society 4.

DOUG KEHR

Junior High Basketball 1; "B" Basketball 1, 2; "A" Basketball 3, 4; Junior High Softball 1; Senior High Softball 2, 3; Track 3, 4; Fall Festival 1, 3, 4; Student Council Treasurer 3; Maroon and Gold Staff 4; Referet Staff 4; Band 1, 2; Spring Show 1, 2; Dance Band 1, 2; Student Council Workshop 3, 4; "E" Club 3, 4; "E" Club Vice-President 4; Horseshoe Tournament 2; Basketball Intramurals 1, 2, 3, 4; Interclass Track Meet 1, 2, 3, 4.

JOE HAMMOND

Junior High Basketball 1; Junior High Softball 1; "B" Basketball 2; Senior High Softball 2, 3, 4; "A" Basketball 3, 4; Track 3, 4; Full Festival Escort 3; Fall Festival Master of Ceremonies 4; Student Council 3, 4; Student Council President 4; Maroon and Gold Art Editor 4; Referet Art Editor 4; Student Council Workshop 4; "E" Club 2, 3, 4; "E" Club President 3; Horseshoe Tournament 2; Basketball Quon Escort 4; State Student Council Convention 4; Softball Co-Captain 4; Interclass Track Meet 1, 2, 3, 4; Fall Festival Scenery 2, 3; Basketball Intramurals 2, 3; Tracplans 4; One-Act Plays 4.

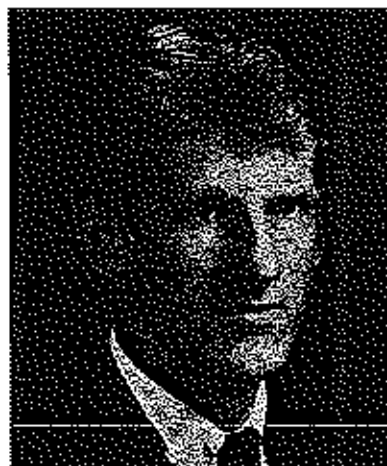


FRANK CLARK

Mixed Chorus 1, 2, 3, 4; Boys' Glee Club 1, 2, 3, 4; Band 2, 3, 4; Dance Band 3, 4; Messiah 1, 2, 3; Band President 3, 4; Music Contests 1, 2, 3, 4; Choral Clinic 3, 4; Band Clinic 3; Junior High Softball 1; Junior High Basketball 1; Senior High Softball 2, 4; "B" Basketball 1, 2; "A" Basketball 3, 4; Track 3, 4; Interclass Track Meet 1, 2, 3, 4; "E" Club 3, 4; Basketball Intramurals 2, 3; State Golf Tournament 2, 3; State Golf Regional 4; Maroon and Gold Sports Editor 4; Referet Staff 4; Fall Festival 1, 2, 3, 4; Fall Festival Escort 3; Audio-Visual Education Club 3; Honor Society 2, 3; Spring Show 1, 2, 3, 4; Dance Band Vocalist 4; One-Act Plays 4.

GERALD BOWLIN

Boys' Glee Club 3, 4; Mixed Chorus 3, 4; Audio-Visual Education Club 3; Young Scientists Club 4; Literary Club 1; Fall Festival 1, 4; Spring Show 3, 4; Christmas Program 3, 4.





LINDA HICKEY
 Band 1, 2, 3, 4; Mixed Chorus 1, 2, 3, 4; Girls' Glee Club 1, 2, 3, 4; Junior High Volleyball 1; Senior High Volleyball 2, 4; Senior High Softball 2, 3, 4; Volleyball Intramurals 1, 2, 3; Pop Club 3, 4; Maroon and Gold Head Typist 4; Maroon and Gold Head Typist 4; Referee Staff 4; Messiah 1, 2, 3; Band Clinic 3, 4; Fall Festival 2, 4; Band Treasurer 4; Mixed Chorus Librarian 1; Dance Band Vocalist 3, 4; Spring Show 1, 2, 3, 4.

PAT GALLOWAY
 Library Club 1, 2; Pop Club 1, 3, 4; "A" Cheerleader 3, 4; "B" Cheerleader 1, 2; Volleyball Intramurals 3; Fall Festival 1, 2, 3, 4; Maroon and Gold Typist 4; Maroon and Gold Business Manager 4; Referee Staff 4; Monitor 1; Messiah 1, 2, 3; Audio-Visual Education Club 2.



JOSEPH JACKSON
 Senior Class President 4; Boys' State 3; Student Council 4; Honor Society 2, 3, 4; Referee Staff 2, 3; One-Act Plays 3; Fall Festival Escort 1; Honor Society Vice-President 3; Audio-Visual Education Club 3, 4.

EDWARD SHAW
 Senior Class Vice-President 4; Leadwood High School 1; Student Council 3; Junior High Baseball 1; "B" Basketball 1, 2; Boys' Glee Club 1, 2, 3; Mixed Chorus 1, 2, 3, 4; Music Contests 2, 3, 4; Messiah 3; Fall Festival 3, 4; Spring Show 2, 3, 4; Audio-Visual Education Club 3, 4; Audio-Visual Education Club Vice-President 3, 4.

CAROL MUSICK
 Maroon and Gold 4; Referee 4.

SALLY LUKE
 Library Club 1, 2; Library Club Reporter 2; Mixed Chorus 2; Girls' Glee Club 2; Volleyball Intramurals 1; Choral Clinic 2; Monitor 1, 3; Fall Festival 1, 3, 4; Fall Festival Herald 1; Spring Show 2; Messiah 2; Maroon and Gold Staff 4; Referee Business Manager 4; Basketball Mtd 4.

DON REED
 "E" Club 2, 3, 4; "E" Club Secretary 3; Student Council 1, 2, 3; Student Council Workshop 2; State Student Council Convention 3; Sophomore Class President 2; Honor Society 2, 3; Fall Festival 1, 2, 3, 4; Band 1, 2; Junior High Softball 1; Senior High Softball 2, 3, 4; "B" Basketball 1; "A" Basketball 2, 3, 4; Track 1, 2, 3, 4; Junior High Basketball 1; Basketball Co-Captain 4; Basketball Intramurals 2, 3; Interclass Track Meet 1, 2, 3, 4.

FORREST SCRIVNER
 Basketball Intramurals 1, 2, 3.





JO ANN MAIER
 Color Bearer 1; Queen of Popularity and Beauty 4; FHA 2,3,4; Fall Festival Maid 3; Junior High Volleyball 1; FHA Historian 2; FHA President 3; FHA Parliamentarian 3; FHA Sub-District Vice-President 3; GOE Club 4; GOE Secretary-Treasurer 4.

JANICE DYER
 Basketball Queen 4; Fall Festival Maid 3,4; "B" Cheerleader 3; "A" Cheerleader 4; Pep Club 1,2,3,4; Student Council Secretary 4; Student Council Committeestator 3; State Student Council Workshop 3; Mixed Chorus 1,2,3,4; Girls' Glee Club 1,2,3,4; Band 1,2,3,4; Band Secretary 3; Fall Festival 4; Junior High Softball 1; Volleyball Intramurals 1,2,3; Maroon and Gold Staff 3; Monitor Captain 4; Measiah 1,2,3; Choral Clinic 2,3; Band Clinic 3.



JOYCE STARK
 Basketball Maid 3; Pop Club President 4; Pep Club 1,2,3,4; Student Council Commissioner 4; Junior High Volleyball 1; Junior High Softball 1; Senior High Softball 2,3,4; Senior High Volleyball 2,3,4; Volleyball Intramural Champ 1,2; Badminton Intramurals 3; Mixed Chorus 1,2,3,4; Measiah 1,2,3; Girls' Glee Club 1,2,3,4; Spring Show 1,2,3,4; Music Contests 1,2,3,4; Monitor 3,4; Intramural Badminton Champ 3.

KARLA KAYS
 Junior High Volleyball 1; Junior High Softball 1; Library Club 1; Volleyball Intramurals 1,2,3; Fall Festival Maid 2; Fall Festival 3; Pep Club 1,4.

WILLIAM KIDWELL
 FFA 1,2,3; GOE Club 4; GOE Club President 4.

PETER GATTERMEIR
 Spanish Club 4; Fall Festival Master of Ceremonies 3; Fall Festival 1,2,3,4; Fall Festival Escort 2; Library Club 3; Audio-Visual Education Club 2; Maroon and Gold Assistant Editor 3; Maroon and Gold Staff 2; Honor Society 2,3,4; American Legion Oratorical District Contest 4; Thompsons Society President 4; Tri-County Speech Contest 2,4; One-Act Plays 2; Basketball Intramurals 1,2; Boys' State 3; State Student Council Convention 1,3; Junior Class President 3; Freshman Class President 1; Student Council 1,2,3.



WAYNE SCOTT
 Honor Society 2,3,4; Honor Society President 3; Mixed Chorus 1,2; Boys' Glee Club 1,2; Junior High Softball 1; Senior High Softball 4; Junior High Basketball 1; "B" Basketball 1; "A" Basketball 2,3,4; Track 2,3,4; Inter-class Track Meet 2,3; "E" Club 2,3,4; "E" Club Secretary 4; Measiah 1,2; State Golf Tournament 2,3; State Golf Regional 4; Fall Festival 1,2,3,4; Spring Show 1,2; Basketball Queen Escort 2,3,4; Basketball Intramurals 2,3.

JAMES SWELLS
 Basketball Intramurals 1,2,3.





BILLY PERN GREEN
 Junior High Volleyball 1; Volleyball Intramurals 1, 2, 3; Hostess Club 1, 2; FHA 1, 2, 3; Library Club 2, 3; Pep Club 1, 2, 3.

BETTY APPERSON
 Fall Festival Herald 1; Pep Club 1, 2, 3, 4; Volleyball Intramurals 1, 2, 3; FHA 2, 3; Hostess Club 2, 3; Monitor 3; Principal's Office 4.



BETTY JO DENNY
 Girls' State 3; Honor Society 2, 3, 4; Freshman Class Secretary 1; Tri-County Choral Clinic 2, 3, 4; Girls' Glee Club 1, 2, 3, 4; Mixed Chorus 1, 2, 3, 4; Messiah 1, 2, 3; FHA All-State Girls' Chorus 4; FHA 1, 2, 3, 4; FHA Reporter 2, 3; FHA Song Leader 4; Monitor 2, 3, 4; Spanish Club 4; Spanish Club President 4; Maroon and Gold Reporter 2; Maroon and Gold Feature Editor 3; Volleyball Intramurals 1, 2, 3; Quill and Scroll Society 4.

ROBERTA PYLES OPIE
 Hostess Club 2; FHA 1.

DONALD VAUGHAN
 Mixed Chorus 2, 3; Boys' Glee Club 2, 3; Basketball Intramurals 1, 2, 3; Library Club 1, 2, 3; Messiah 1, 2, 3; COE Club 4.

JIMMY RUSH
 FFA 1, 2, 3.



KARL HAYES
 COE 4.

DAVID CURRENCE
 Honor Society 2, 3, 4; Fall Festival Escort 4; Referee Staff 2, 3; Student Council 1, 2; Mixed Chorus 2, 3, 4; Boys' Glee Club 2, 3, 4; Boys' Glee Club President 4; Messiah 2, 3; Junior High Basketball 1; Senior High Softball 4; Track 3, 4; "E" Club 3, 4; FFA Sentinel 2; FFA Secretary 3; Missouri State Farmer Degree 3; Boys' State Alternate 3.





DORIS MARTIN
 FHA 2, 3; Hostess Club 2, 3; Volleyball Intramurals 1; Superintendent's Office 4.

BETTY DUNWIDDIE
 Honor Society 3, 4; FHA 2; FFA, Secretary 2; Christmas Recitation 4.



JUDY CUNNINGHAM
 Pop Club 1, 2, 3, 4; Fall Festival 1, 2, 4; Junior High Volleyball 1; Senior High Volleyball 3; Junior High Softball 1; Senior High Softball 2, 3, 4; Volleyball Intramurals 1, 2, 3; Maroon and Gold Staff 2, 3; Messiah 1; Spanish Club 4; Monitor 2, 3, 4; Mixed Chorus 2.

BETTY MCKINLEY
 FHA 2; Senior High Volleyball 3, 4; Senior High Softball 4; Volleyball Intramurals 3.

DAN SMALL

"B" Basketball 3; "A" Basketball 4; Senior High Softball 3; FFA 1, 2; Audio-Visual Education Club 2, 3; Basketball Intramurals 2.

JAMES PUNGE

Missouri Military Academy 1, 2; Missouri Military Academy "B" Basketball 2; Eagle Staff 1, 2; Basketball Intramurals 1, 2, 3; Interclass Track Meet 1, 2, 3.



LARRY GAMPHEN

COE Club 4; COE Club Vice-President 4; COE Basketball 4; Fall Festival 2, 3, 4; FFA 1; FFA Judging Contest 1.

GLEN GAMDEN

Library Club 2; COE Club 4; Basketball Intramurals 1.





PEGGY STARN

FNA 2,3; Junior High Softball 1; Volleyball Intramurals 1,2,3; Badminton Intramurals 3; Student Council 4; Usher at Senior Graduation 3; Audio-Visual Education Club 4.

JUDY GARTIN

Fall Festival 2,3,4; Fall Festival Maid 4; Junior High Softball 1; Junior High Volleyball 1; Pop Club 1,2,3,4; Volleyball Intramurals 1,2,3; Student Council 1,2; Basketball Maid 4; Audio-Visual Education Club 2; Monitor 2,3.



ANNETTA JACKSON

Senior Class Secretary 4; Pep Club 2,3,4; Mixed Chorus 1,2,3,4; Girls' Glee Club 1,2,3,4; Girls' Glee Club Vice-President 4; Messiah 1,2,3; Spring Show 1,2,3,4; Music Contests 1,2,3,4; Moroon and Gold Reporter 2; Superintendent's Office 4; Alternate Girls' State 3; Junior High Softball 1; Junior High Volleyball 1; Volleyball Intramurals 1,2,3; Intramural Badminton Champ 3; Monitor 4; Spanish Club 4; Choral Clinic 4.

FERN CHAPMAN

Hostess Club 2,3,4; Library Club 4.

GEORGE KIEPPE

ITA 1,2,3,4; PFA Treasurer 4; Audio-Visual Education Club 3; Fall Festival Escort 4; Basketball Intramurals 1,2,3.

GENE GARRON

Band 3,4; Mixed Chorus 3,4; Boys' Glee Club 3,4; Dance Band 3,4; Spring Show 1,3,4; Fall Festival 1,2,4; Music Contests 4; Messiah 3; Track 1,3,4; Interclass Track Meet 1,2,3,4; "E" Club 3,4; Library Club 1,2; Junior High Basketball 1; "S" Basketball 1,2; Junior High Softball 1; Senior High Softball 4; Basketball Intramurals 1,2,3,4; Choral Clinic 4.



HARVEY BASHORE

Audio-Visual Education Club 1,2,3,4; COE Club 4; Basketball Intramurals 2,4.

LARRY THOMAS

Audio-Visual Education Club 2; Glee Club 1,2; Basketball Intramurals 2,3; COE Club 3,4.





BONNIE LAUGHLIN
FHA 2; Volleyball Intramurals 2, 3.



ALMA HICKS
FHA 2, 3, 4; FHA Song Leader 3, 4; Volleyball Intramurals 2; Messiah Tableau 3.



NELLIE HELDSTAB
Fall Festival 4; Messiah 1, 2, 3; Girls' Glee Club 2, 3, 4; Mixed Chorus 2, 3, 4; Junior High Volleyball 1; Volleyball Intramurals 1, 2, 3; Library Club 2; Girls' State Alternate 3; Monitor 2, 3, 4; Honor Society 2, 3, 4; Junior Class Secretary 3; Sophomore Pilgrimage 2; Maroon and Gold Assistant Art Editor 2; Maroon and Gold Art Editor 3.



JOANNA REYNOLDS
FHA 2, 3; FHA Song Leader 2; FHA Vice-President 3; Hostess Club 1, 2, 3; Badminton Intramurals 3; Senior High Volleyball 4; Audio-Visual Education Club 4; Messiah 2; Messiah Tableau 3; Mixed Chorus 2, 4; Girls' Glee Club 2, 4; Monitor 1.

JOHN CAMPBELL

FFA 1, 2, 3, 4; FFA President 4; FFA Vice-President 3; FFA Reporter 2; FFA Honor Roll 1, 2, 3, 4; Mixed Chorus 1, 2, 3; Band 1, 2, 3, 4; Messiah 1, 2; Fall Festival 1, 2, 3, 4; Spring Show 1, 2, 3; Vice-President Junior Class 3; Vice-President Freshman Class 1; First Place Winner of District American Legion Essay Contest 1; Maroon and Gold Staff 2, 3; Track 2, 3, 4; "E" Club 3, 4; Basketball Intramurals 1, 2, 3; Student Council 4; Honor Society 2, 3, 4; Spring Show 1, 2, 3.

DONALD LAKE

FFA 1, 2, 3; Basketball Intramurals 1, 2, 3; Audio-Visual Education Club 2.



DOLAN HOWREN

Music Contests 1, 3; Audio-Visual Education Club 4; Band 1, 2, 3.

THOMAS THORSON

FFA 1, 2; Basketball Intramurals 1, 2, 3.





GEORGINE MUBICK
FHA 3, 4.

DARLENE STETZBURGER
Junior High Softball 1; Pop
4; Volleyball Intramurals
3; Girls' Glee Club 1, 2, 3; W
Contests 1, 2, 3; Messiah
Library Club 3; Library Secof
Yearbook 3; Glee Club 3; L
itor 3, 4.



BARBARA PROCTOR
FHA 1

LOVEA TRAMMELL
Volleyball Intramurals 1, 2, 3; B
inton Intramurals 3; Library C
3; FHA 2, 3; Senior High Vole
ball 4; Usher at Baccalaureate

JOE BEISHE
COE 4.

LEROY DEAN
FFA 1, 2, 3; Basketball Intramurals
2; Audio-Visual Education Club 2;
COE Club 4.



ROBERT SCOTT
FFA 1, 2, 3.

RONALD HUNT
COE 4.



FF
Au
Ve
ba

SEN
ep Cl
ls 1,
: Mus
oh 2,
retary
3; Mem



JUDY ALDERMAN THORSON
Library Club 1; FHA 2; Hostess
Club 3; COE 4.

DOLORIS THOMAS
FHA 3, 4.

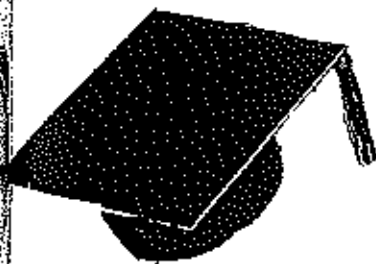
3; Bad
ry Clu
olley
ste 3



DAVID SYWATERS
Tarkio High School 1, 2, 3; Art
Club 2; Sportsman Club 3; Junior
High Track 1; Freshman Class
Treasurer 1; Movie Club 1, 2.

RONALD BROWN
Ozark High School 1; Ozark High
"B" Basketball 1; Glee Club 1;
Student Council 2, 3, 4; Student
Body Vice-President 4; State Stu-
dent Council Workshop 4; Soph-
omore Vice-President 2; Junior
High Basketball 1; "B" Basket-
ball 2, 3; "A" Basketball 4; Junior
High Softball 1; Senior High Soft-
ball 3; Track 2, 3, 4; "E" Club
2, 3, 4; Audio-Visual Education
Club 2, 3; Maroon and Gold Staff
2, 3; Fall Festival Escort 2; Inter-
class Track Meet 1, 2, 3, 4.

Not Shown--Paul Jones



SENIORS





Undergrads

Modern Chemistry Dull Brooks Metcalf



Juniors

OFFICERS:
 Jane Fry
 President
 Bill Gunn
 Vice-President
 Roberto Harvey
 Secretary-Treasurer
 Robert Allen
 Larry Apperson
 Carolyn Atkinson

Rody Baughman
 Diana Scanland
 Bill Bear
 Rebecca Boan
 Martha Branstetter
 Jerry Campbell

Jo Ellen Catron
 Tommy Christian
 Dolores Conner
 Wayne Cooper
 Norma Cox
 Shaffer Devonport

Carol Denman
 Lois Dinwiddie
 Dolores Duffield
 Robert Dunstan
 Norman Degraffenreid
 Joyce Dutcher

Geraldine Eiken
 Richard Forrester
 David Frank
 Doris Graham
 Gail Graham
 DeAnn Haynes

JoAnn Heather
 Robert Hulton
 Tom Henley
 Gwendora Hoppard
 Howard Hibdon
 Virgil Holder





Ralph Hoidt
 Nellie Howaar
 Ruth Howaar
 Roger Harlubise
 Wanda Imier
 Ronald Jones



Joyce Kehr
 Ross Kidwell
 Mike Klupp
 Harold Lake
 Doris Lowery
 Key Maher



Jane Martin
 Clifford McKinley
 Barbara Melton
 Carol Meyer
 Mary Meyer
 Eugene Müller



Vernie Morris
 Walter Phillips
 Bill Phillips
 Allen Pond
 Charles Pope
 Donna Ren



Charles Reynolds
 Rosie Robbins
 Barbara Sanning
 Eugene Schmitz
 Carolyn Schuler
 Donald Shepherd



Carolyn Shellhart
 Harley Sidebottom
 Wanda Simmons
 David Smith
 Jerry Spratt
 Joyce Stevens



Robert Stryker
Dale Builes
Carolyn Taylor
Darlene Taylor
Ariene Taylor
Pat Taylor



Brenda Thompson
Dennis Thompson
Suente Thompson
Charles Thornbrugh
Rex Twitchell
Dunny Tyler



Jack Tyler
Donald Upton
Howard Vann
Lucile Wilke
Pat Wallace
Curt Wallis



Joe White
Anita Wise
Della Fern Williams
Charles Wood
David Woodley
Eugene Yarbrogh



Jan Zimaer

Not Shown:
Shirley Banastetter
Elizabeth Bengali
Robert Cooper



Sophomores



Barry Koskius
President
Mike Craig
Vice-President
Sharon Ekstam
Secretary-Treasurer

Wynona Ahart
Jack Albertson
Donna Allen



Jack Apperson
John Attobery
Billy Bazton
Elizabeth Baquet
Norma Bashora
Edward Bonland



Joyce Begley
Carol Bestamy
Bill Berkrosser
Stanley Hinakenship
Deloris Bond
Lary Bond



Raymond Bond
Ruth Bond
Harvey Bowden
Sue Bowden
Jim Campbell
Pat Cleaton



Anita Cochran
Brenda Coffman
Roy Coopes
Harold Cornett
Jackie Crane
Edward Crown



Geraldine Dana
Sandra Davis
Gale Danison
Gladys Dinwiddie
David Eidson
Linda Eiken



Mary Jo Farmer
Larry Ford
Ruth Gibson
Russell Gibson
Bonnie Gleshen
Agreta Green



Eugene Haggerman
Alan Handley
Barbara Harnesa
Charles Hayes
Gena Haynes
Joyce Hoot



Billie Sue Hinds
Sherry Houston
Barbara Isler
Leotta Jackson
Linda Jarrett
Jany Jeffries



Robert Jenkins
Donna Jester
Paula Jobe
Darrell Keys
Arlan Keys
Sue Kinball



Gerald Leslie
Tommy Loving
Sharon Manning
George McDaniels
Nancy McMillin
Larry Nickoff



Stanley Opie
David Pace
Donald Petet
Gay Potamann
Virginia Redcliff
Billy Reynolds



Sharon Robinson
Lewis Rogers
James Rusak
Linda Schick
Shirley Schupp
Britley Stone



David Smith
Reece Sparks
Sue Spencer
Helen Spratt
Bob Stewart
John Stickney



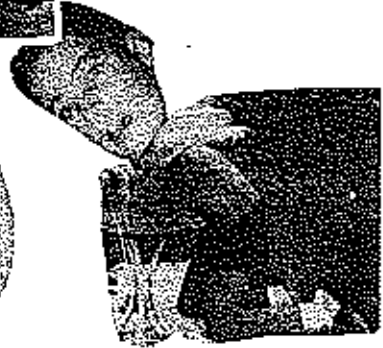
Joyce Taylor
Carolyn Thacker
Pat Thomson
Bonny Thomson
Jerry Thrower
Mary Ann Tracy



Gen Trammell
George Turpin
Jan Underwood
Beth Vernon
Elois Vernon
Fred Wood



Larry Wood
Kenneth Wilson
Wanda Williams
Walter Ward
Barbara Weeks



Freshmen



Dwain Wood
President
Edite Gump
Vice-President
Vickie Stark
Secretary-Treasurer

Judy Allen
Barbara Apperson
Darrell Apperson



Sue Barbarick
Dennis Boenland
Ronald Board
Cary Blankenship
Marilyn Bond
Sonja Bohra



Ernest Boyd
Bert Branstetter
Mary Branstetter
Robert Branstetter
Betty Buchanan
Danny Bunch



Carolyn Cantwell
Emma Carpenter
Patricia Carter
Ruby Chapman
Charles Clark
Sharon Corner



Kenneth Cox
Brent Crane
Roberta Crouch
Kay Davies
Sue Denman
Janice Dlawiddin



Richard Dunigan
Billy Eiken
Shirley Forrester
Sus Gehart
Ronnie Gracy
Sharon Green



Darlene Golden
 Karee Goodrick
 Mary Lou Gunn
 Onie Rees
 Sharon Hirschmann
 John Howser



Laverne Howser
 Virginia Howser
 Darrell Hunt
 Carolyn Jackson
 Mallinda James
 Charles Jobe



James Jobe
 Dwight Jones
 Carol Kehr
 Ronald Kiequery
 Frances Knipp
 William Kumbel



Sheron Misher
 Fay Martin
 Willard May
 James Morgan
 Bobby Newton
 Elmer Nichols



Martin Opie
 Douglas Parkhurst
 Gayle Parsons
 Robin Patterson
 Cheryl Pope
 Janice Pope



David Procter
 Harold Rader
 Carol Rains
 Pat Reynolds
 Linda Robinett
 Kenneth Robb



Terry Roe
 Lea Ette Rogers
 Stanley Ruyyan
 Marilyn Schutte
 Daniel Schutte
 Katherine Scott



Eddie Scribner
 Clifford Simmons
 Betty Smock
 Robert Sparks
 Dennis Spratt
 Gail Stark



Larry Stogsall
 Donald Taylor
 Tommy Taylor
 Gail Thompson
 Ruby Turpen
 Elsie Twitchel



Donald Vann
 Donald VanHoose
 Roger VanPool
 Janice Vernon
 Helen Vaughan
 Beverly Volkart



Phyllis Wallis
 Judy Walker
 Bill Watkins
 Phyllis Watt
 Lee West
 Betty White



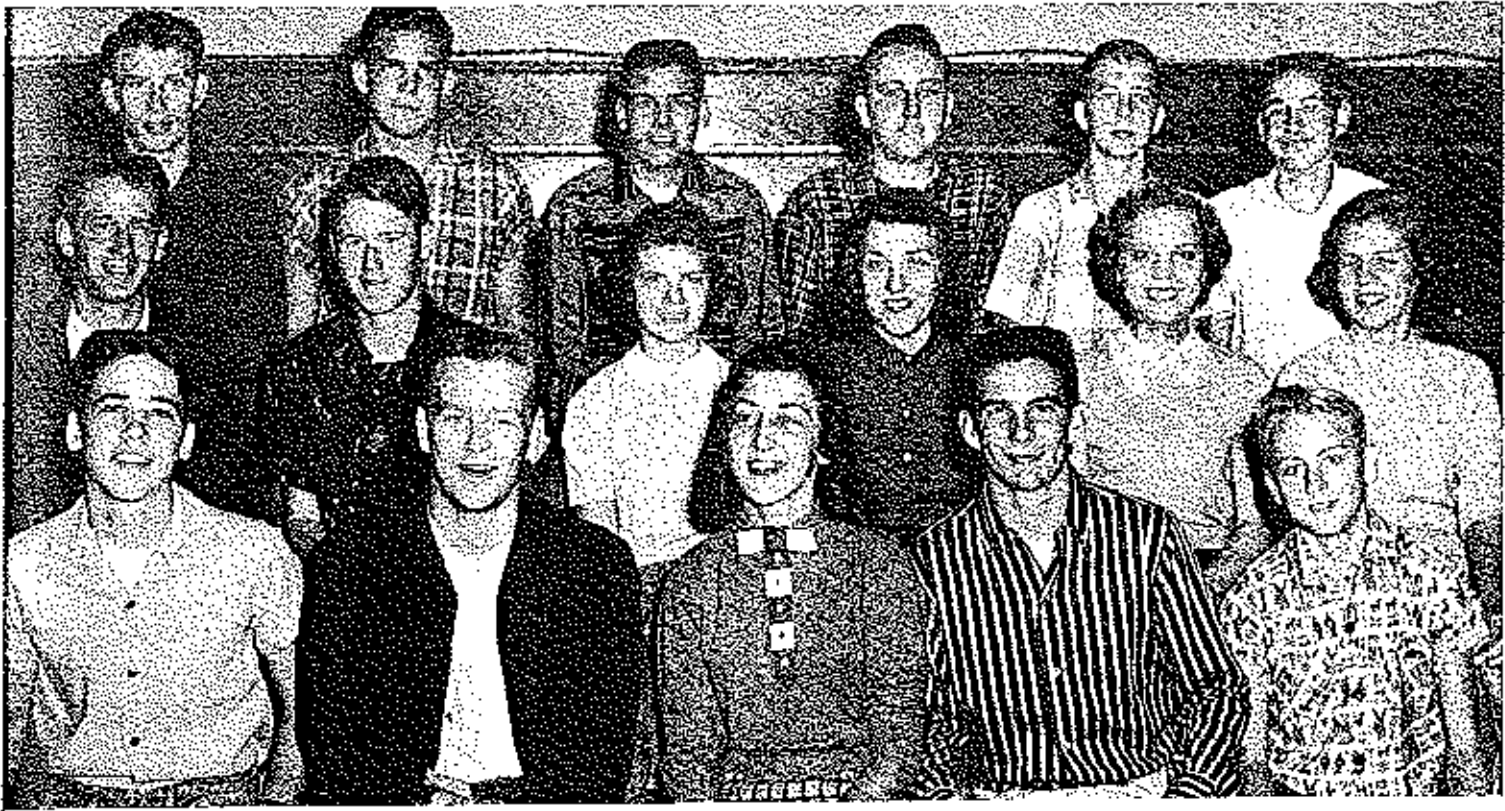
Tommy Wicneman
 Lary Williams
 George Wilson
 James Yazuy
 David Zinner

Not Shown:
 Donald Bashore
 Kenneth Cornett
 Lary Haggeman
 Helen Jufferies
 Mary Isdrick



Activities





Student Council

FIRST ROW: Bill Bear, Joe Hammond, Janice Dyer, Ronald Brown, Terry Bos. SECOND ROW: John Campbell, Benny Jackson, Peggy Siers, Joyce Stark, Kay Maier, Jane Fry. THIRD ROW: Arlen Keys, Clifford McKinley, Dennis Thompson, Barry Huskins, Brent Crane, Dwain Wood.



JOE HAMMOND
President

RONALD BROWN
Vice-President



JANICE DYER
Secretary

BILL BEAR
Treasurer





Publications Class

FIRST ROW: Pat Callison, Sue Davies, Jlee Conlon, Audra Calhoon, Mrs. Sarah Brockman, Linda Hickey, Carolyn Shellhart. SECOND ROW: Donna Rea, Linda Pace, Mary Jo Farmer, Deloris Bond, Mary Ann Tracy, Linda Jarrett, Sally Luke. THIRD ROW: Gerald Bowlin, Joe Hammond, Doug Kehr, Frank Clark.

Maroon and Gold Staff

Editor Jlee Conlon
 Associate Editor Audra Calhoon
 Business Manager Pat Callison
 Art Editor Joe Hammond
 Assistant Mary Jo Farmer
 Sports Editor Frank Clark
 Scandal Editor Carolyn Shellhart
 Head Reporter Sue Davies
 Reporters Mary Tracy
 Linda Jarrett
 Donna Rea
 Sally Luke
 Deloris Bond
 Head Typist Linda Hickey
 Typist Linda Pace
 Printers Doug Kehr
 Gerald Bowlin
 Exchange Editor and
 File Clerk Carol Musick

Referet Staff

Editor Sue Davies
 Co-Assistant
 Editors Linda Pace
 Donna Rea
 Business Manager Sally Luke
 Copy Editor Audra Calhoon
 Art Editor Joe Hammond
 Staff Doug Kehr
 Linda Jarrett
 Linda Hickey
 Mary Ann Tracy
 Carolyn Shellhart
 Gerald Bowlin
 Mary Jo Farmer
 Frank Clark
 Jlee Conlon
 Sally Luke
 Pat Callison

34 Sponsor Mrs. Sarah Brockman

Sponsor Mrs. Sarah Brockman



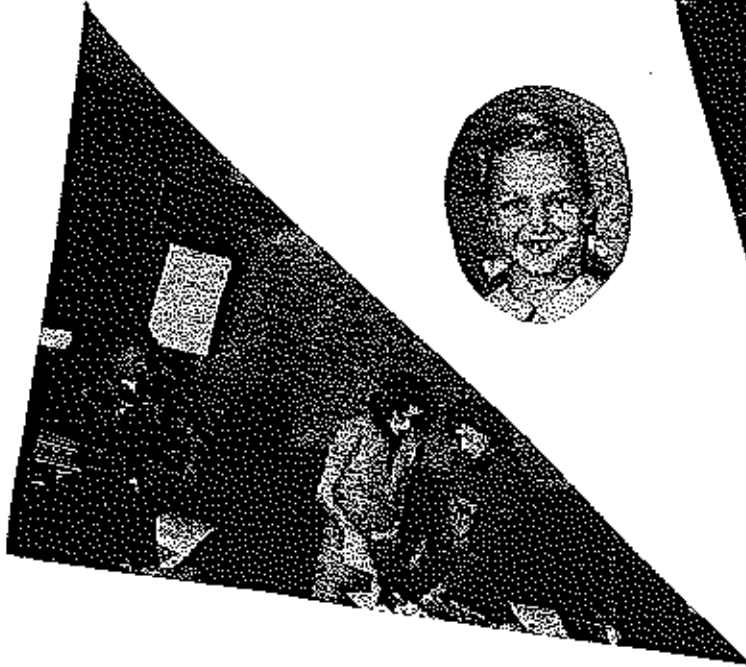
SUE DAVERS
Editor of Referet



LINDA PACE
Co-Assistant Editor of Referet



DONNA REA
Co-Assistant Editor of Referet



LEE CONLON
Editor of Maroon and Gold

AUDRA CALHOON
Assistant Editor of Maroon and Gold





BILL PHILLIPS
President



JERRY SPRATT
Vice-President



RUTH HOWSER
Secretary

F
I
R
S
T

S
E
M
E
S
T
E
R



National Honor Society

FIRST ROW: Bill Phillips, Ruth Howser, Jerry Spratt. SECOND ROW: Donna Rea, Norma Cox, Roberta Harvey, Carolyn Shelhart, Ilea Conlon, Betty Denny, Barbara Sanning, Betty Dinwiddie. THIRD ROW: Pete Gattermeir, Wayne Scott, Bill Bear, Benay Jackson, David Currence, John Campbell, Rose Kidwell. FOURTH ROW: Nellie Heldstah, Roeta Robbins, Jo Ann Heather, Kay Maher, Mary Meyer, Jane Martin, Doris Graham.

NELLIE HELDSTAH
President

NORMA COX
Vice-President

CAROLYN SHELHART
Secretary



S
E
C
O
N
D

S
E
M
E
S
T
E
R



FIRST ROW: Ruth Howser, Donna Rex, Doris Graham, Barbara Sanning, Kay Maher, Norma Cox, Roberte Hatvey, Rosie Robbins, Rebecca Boan, SECOND ROW: Bill Phillips, Betty Reynolds, Ruby Runyan, Betty Dimwiddle, Alberta Green, Jeannette Knerschield, Betty Denny, Pete Galtersair, Judy Murrell, Wayne Scott, Benny Jackson, Mary Seeley, Robin Kellfer, Carole Maher, David Curran, Jlee Conlon, Nellie Holdstab, John Campbell, Barbara Graham, Ann Beard, Jerry Spratt.



Honor Society Seniors of 1956-57

FIRST ROW: Judy Murrell, Ruby Runyan, Barbara Graham, Mary Seeley, Robin Kellfer, Betty Reynolds, Jeannette Knerschield, Carole Maher, Alberta Green, Ann Beard.





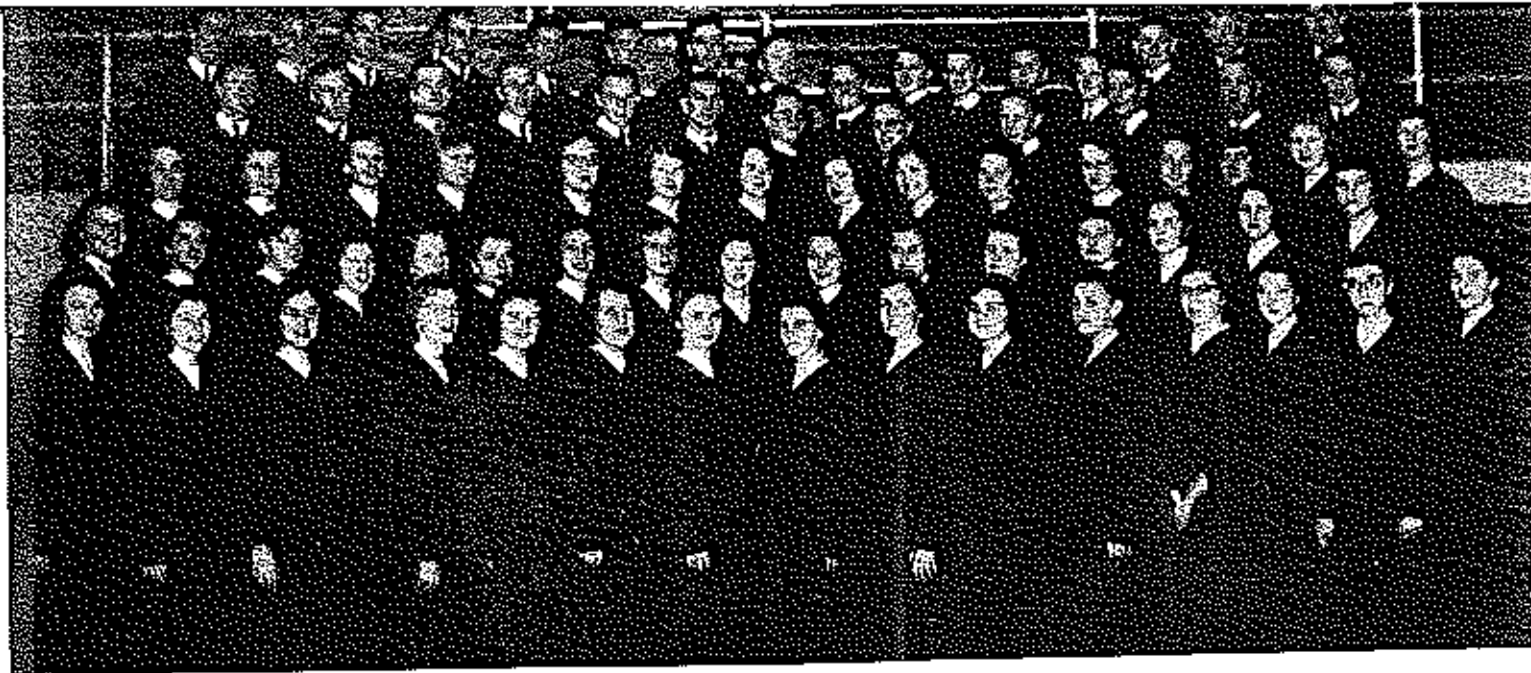
Girls' Glee Club

FIRST ROW: Nelkie Heksteb, Linda Ferrott, Pat Reynolds, Sharon Hirschman, Beth Vernon, Linda Pace, Betty Doney, Jo Ellen Catron, June Fry, Barbara Harness, Jackie Grenc, Marilyn Schmitz, Vickie Stack, Sharon Ekstrom, Kay Davies. SECOND ROW: Wanda Simmons, Mary Jo Farmer, Doris Vernon, Ruth Bond, Ruth Nowner, Sae Barbarick, Janice Dyer, Mary Meyer, Pat Carlner, Donna Allen, Judy Allen, Barbara Melton, Billie Hinds, Leotta Jackson, Marilyn Bond, JoAnne Reynolds. THIRD ROW: Joyce Stack, Donna Jester, Barbara Gansing, Jan Otta Rogers, Barbara Inler, Joyce Beasley, Linda Schick, Joyce Taylor, Janice Vernon, Annetta Jackson, Jice Conlon, Linda Hickey, Jo Ann Heather, Roberta Harvey, Linda Eiken.

Band

FIRST ROW: Bill Bear, Bill Phillips, JoAnne Heather, June Fry, Gene Catron, Mary Tedrick, Mary Meyer, Tom Winceman, Charles Clark, Sammy Upton, Richard Bunch. SECOND ROW: Leotta Jackson, Janice Dyer, Sue Barbarick, Mary Jo Farmer, Evelyn Dupardus, Sharon Ekstrom, John Campbell, Linda Eiken, Donald Kidwell. THIRD ROW: Margaret Nowack, Roberta Harvey, Linda Hickey, Donna Spencer, Billie Sue Hinds, Jice Conlon, Sandra Davis, Janice Vernon, Janet Clark, Donna Denny. FOURTH ROW: Norman Bashore, Ross Kidwell, Pat Reynolds, Shirley Flaughter, Kay Davies. FIFTH ROW: Brent Claus, David Smith, Donny Bunch, Jos White, Robert Allen, Donald Shepherd, Frank Clark, Donald Upton.





Mixed Chorus

FIRST ROW: Nellie Haldstad, Linda Farrell, Pat Reynolds, Sharon Hirschman, Beth Vernon, Linda Pace, Betty Denay, Jo Ellen Catron, Jane Fry, Barbara Harness, Jackie Crane, Marilyn Schmitz, Vickie Stark, Sharon Ekstrom, Kay Davies. SECOND ROW: Wanda Simmons, Mary Jo Farmer, Doris Vernon, Ruth Bond, Ruth Howser, Sue Barbarick, Janice Dyer, Mary Meyer, Pat Carner, Ticsna Allen, Judy Allen, Barbara Melton, Billie Blada, Louisa Jackson, Marilyn Bond, Jo Anna Reynolds. THIRD ROW: Joyce Stark, Donna Jester, Barbara Sanning, Lea Elto Rogers, Barbara Jester, Joyce Sealey, Linda Schick, Joyce Taylor, Janice Vernon, Annetta Jackson, Ilce Catron, Linda Hickey, Jo Ann Heather, Roberts Harvey, Linda Elken. FOURTH ROW: Raymond Bond, Lucy Ford, Charles Thornbrugh, George McDaniel, Eddie Gump, Bill Phillips, Tommy Wieneman, Gene Catron, Ronald Beard, Don Vann, Larry Bond, David Pace. FIFTH ROW: Norman Bashore, Gary Potzmann, Clifford Simmons, David Clarence, Robert Allen, Donald Shepherd, Bill Bear, John Howser, Dennis VanHouser, Mike Morgan, Charles Clark, Eddie Scribner, Denny Bunch, Charles Reynolds, Frank Clark, Donald Upton.

Boys' Glee Club

FIRST ROW: Raymond Bond, Lucy Ford, Charles Thornbrugh, George McDaniel, Eddie Gump, Bill Phillips, Tommy Wieneman, Gene Catron, Ronald Beard, Don Vann, Larry Bond, David Pace. SECOND ROW: Norman Bashore, Gary Potzmann, Clifford Simmons, David Clarence, Robert Allen, Donald Shepherd, Bill Bear, John Howser, Dennis VanHouser, Mike Morgan, Charles Clark, Eddie Scribner, Denny Bunch, Charles Reynolds, Frank Clark, Donald Upton.





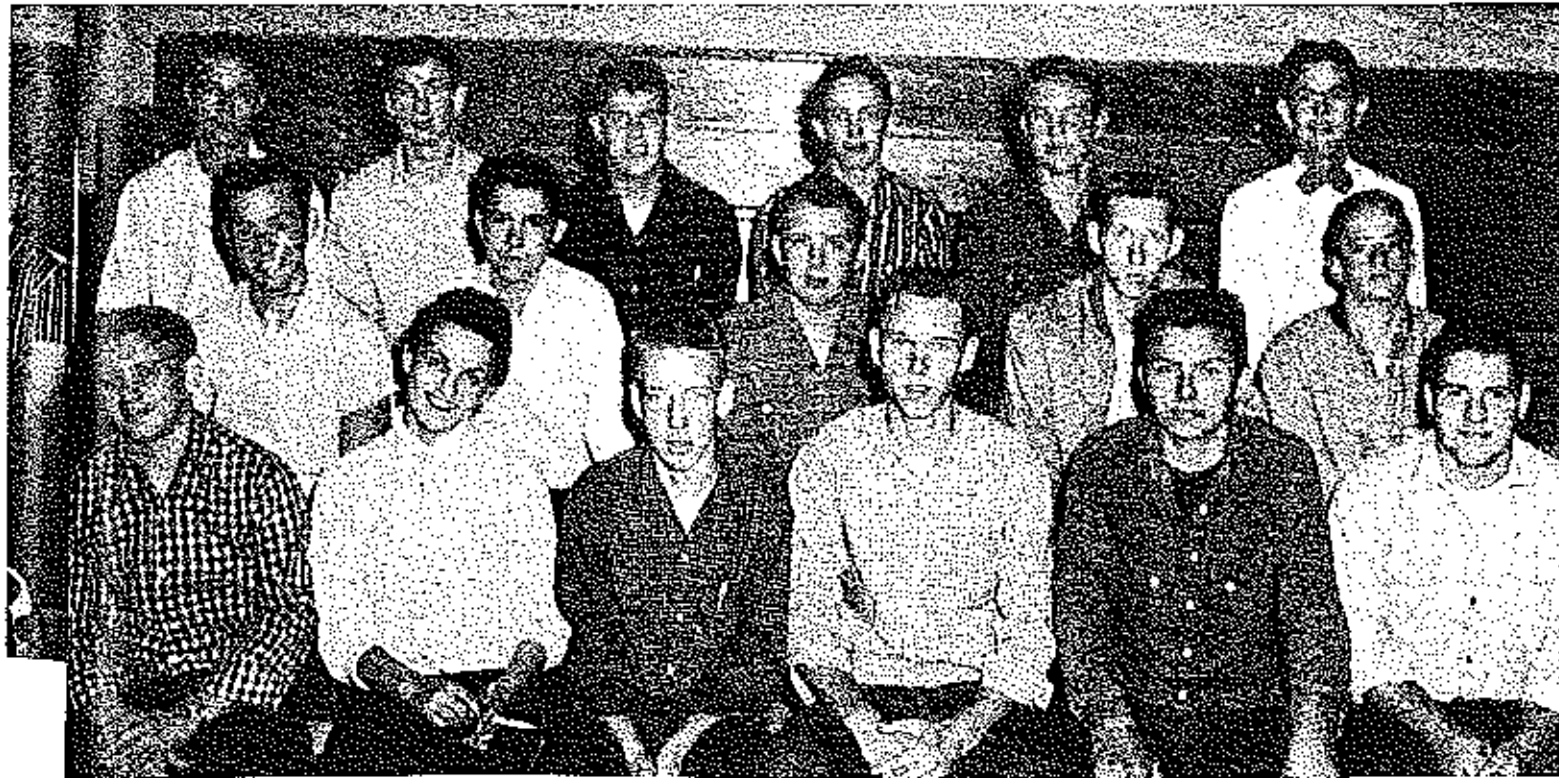
Science Club

FIRST ROW: Barbata Apperson, Sue Gerhart, Audra Calhoun, Carol Kehr, Sue Barberick, Mary Tedrick, Mr. Don Brashears. SECOND ROW: Kay Davica, Betty Smock, Pat Cartner, James Yancy, Brent Crane, Gayle Parsons, Barbara Karness. THIRD ROW: Gerald Bowlin, Don Vann, Lee West, Dwain Wood, Jim Dlawidlo, David Smith, Tommy Lwing.

National Thespian Society

FIRST ROW: Rustic Robbins, Robert Allen, Pete Gattenehr, Joyce Stevens. SECOND ROW: Bill Phillips, Mary Meyer, Jane Fry, Bill Bear, Miss Martha Sprinks.





Co-operative Occupational Education Club

FIRST ROW: Karl Hayes, Jo Ann Maher, Ice Belcher, Harvey Basire, Rudy Baughman, Howard Hibdon. SECOND ROW: Larry Gaspar, Shaffer Davengert, Ronald Hunt, Paul Jones, Tommy Wood. THIRD ROW: Bob Scott, Bill Kidwell, Lucy Thomas, Ross Kidwell, Leroy Dean, Mr. Frank Dreko.

Spanish Club

SEATED: Judy Cunningham, Joyce Taylor, Mr. Jones Blackburn, Sponsor; Betty Jo Denny, Barbara Haines, Annette Jackson, Sharon Robinson. STANDING: Anita Cochran, Betty Hoskins, Barbara Inter, Linda Schick, Felo Gutierrez, Carolyn Thacker, Sharon Manning, Pat Thompson, Raymond Bond, Shalee Schupp, Ruth Ann Bond, Livia Jarrel, Donna Allen, Jackie Crane, Bonnie Clason.





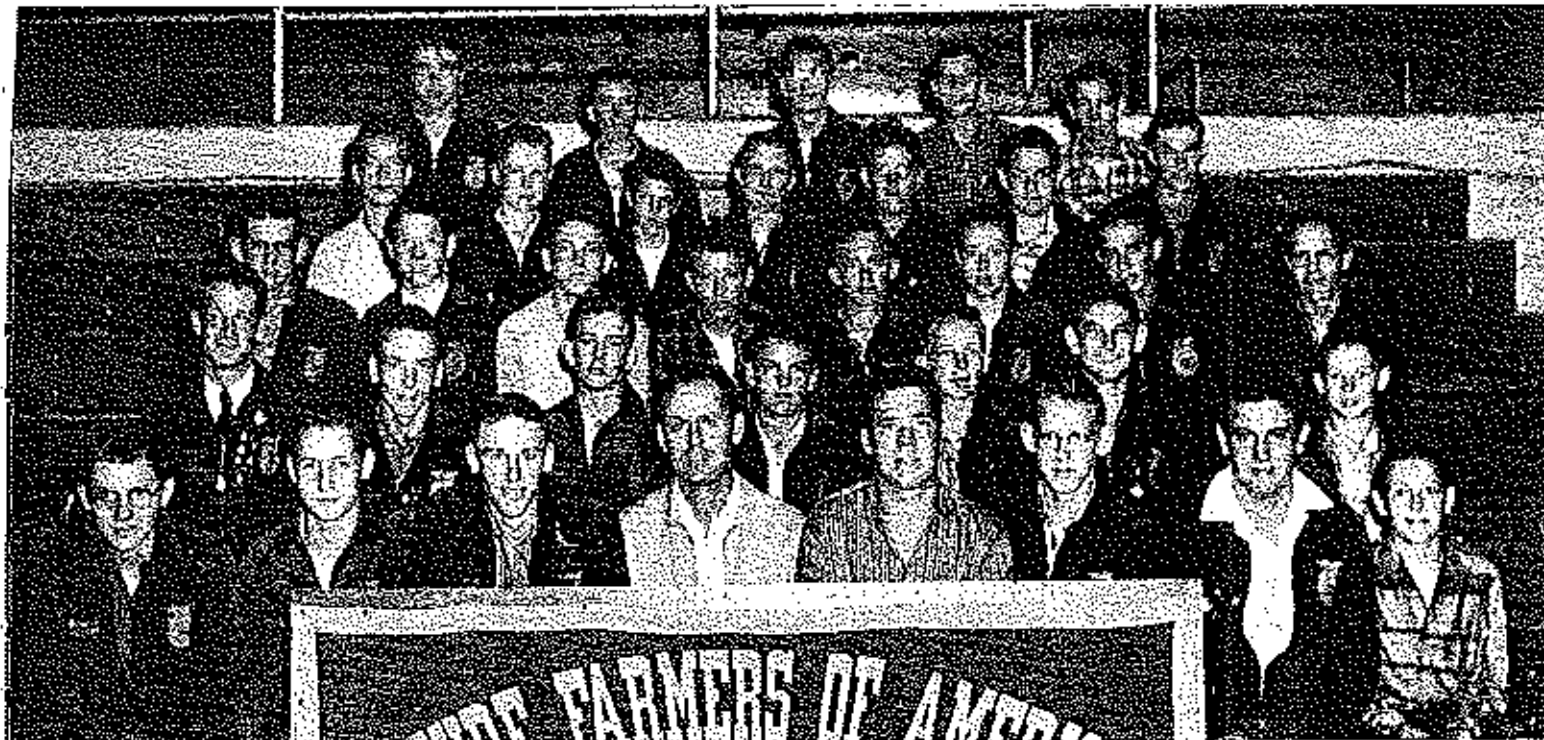
Future Homemakers of America

STANDING: Ricky Sanning, Club Mascot. FIRST ROW: Mrs. Roy Stevens, Club Grandmother, Jane Martin, Alma Hicks, Mary Meyer, Jo Ann Maher, Mrs. Winnie Mae Rohlfing, Nelhe Howser, Mr. and Mrs. Dick Sanning, Club Parents. SECOND ROW: Miss Mollie Winston, Kay Maher, Paula Jobe, Sherry Houston, Joyce Stevens, Norma Cox, Betty Jo Deamy, Barbara Sanning. THIRD ROW: Linda James, Doris Graham, Elizabeth Bungart, Buelia Thomson, Della Fern Williams, Dolores Duffield, Judy Walker, Helen Vaughn. FOURTH ROW: Faye Martin, Dolores Thomas, Ottlene Musick, Judy Allen.

Hostess Club

FIRST ROW: Fern Chapman, Ronnie Gloschen, Nancy McMillin, Barbara Harness, Barbara Apperson, Mrs. Winnie Mae Rohlfing, Miss Mollie Winston, Mary Tedrick, Beth Vernon. SECOND ROW: Sherry Houston, Paula Jobe, Jane Martin, Elizabeth Bungart, Sherry Forester, Sharon Connor, Lee Ella Rogers, Foy Martin, Brenda Goffman. THIRD ROW: Mary Jo Farmer, Sue Bowden, Carolyn Thacker, Helen Vaughn, Linda James, Phyllis Wall, Cheryl Pope, Sharon Manning, Argreta Green, Carol Brilamy. FOURTH ROW: Elizabeth Baquel, Kay Davies, Betty Simcik, Carol Kehr, Sue Barbarek, Sue Gerhart, Linda Eiken, Sue Kimball, Deloris Bond. FIFTH ROW: Mike Morgan, Don Schulte, Edie Scryner.



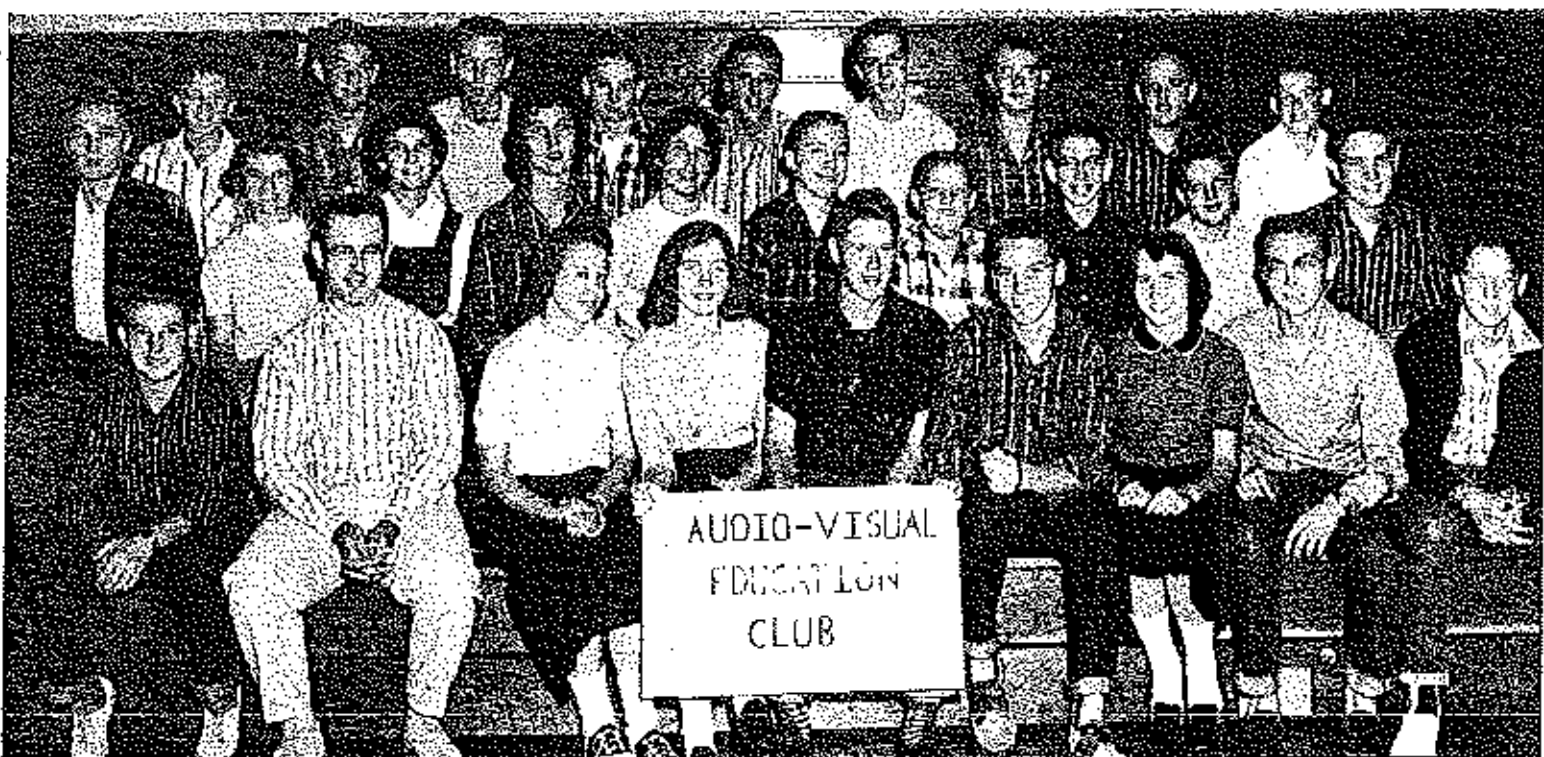


Future Farmers of America

FIRST ROW: Harold Lake, Robert Sparks, David Frank, Mr. Clifford Greenway, Don Nickels, Larry Williams, George Ruffe, Harold Radtke.
 SECOND ROW: John Campbell, Rex Twitchell, Virgil Helder, Martin Opie, Route Grace, Charles Reynolds, Gail Thompson. THIRD ROW:
 Howard Vann, David Frantz, Billy Koebel, Ronald Hunt, Donald Taylor, Kenneth Cox, Billy Blankenship, Jerry Campbell. FOURTH ROW:
 George Turpin, Eugene Yarbrough, Stanley Opie, Carl Graham, Walter Ward, Billy Berkstromer, Verne Norris. FIFTH ROW: Lewis Rogers,
 Henry Ertson, Jerry Leslie, Gene Haynes, Alan Handley.

Audio-Visual Education Club

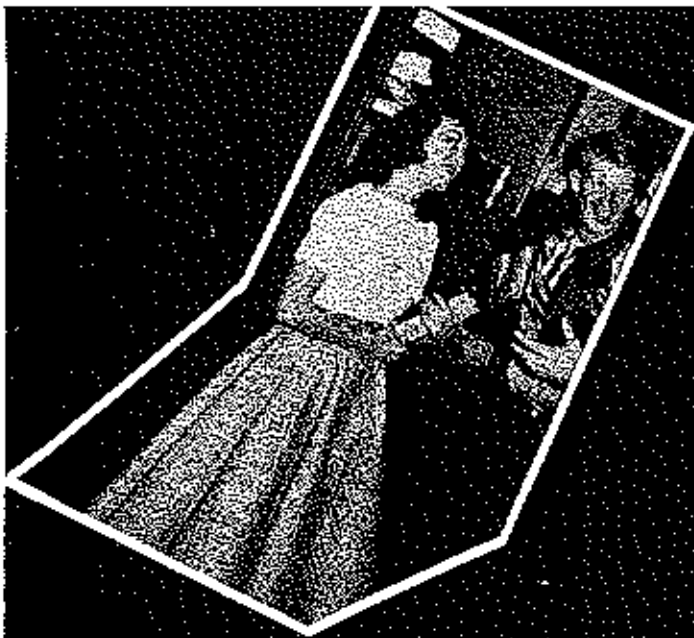
FIRST ROW: Mike Morgan, Mr. John Taylor, Ruth Howers, Sue Davies, Benny Jackson, Ed Shaw, Carol Meyer, Bob Shyker, Donald Bashore.
 SECOND ROW: Eugene McDaniel, Peggy Sears, JoAnna Reynolds, Linda Wise, Patsy Wallace, Johnny Bowers, Dennis VanHooser, Kenny
 Robb, Jerry Throver, Leon Helton. THIRD ROW: Eddie Scribner, Dolan Hawton, Harvey Bashore, Gail Depison, Mike Craig, Clifford
 Simmons, Tommy Wiensman, Robin Patterson, Dana Sunch.





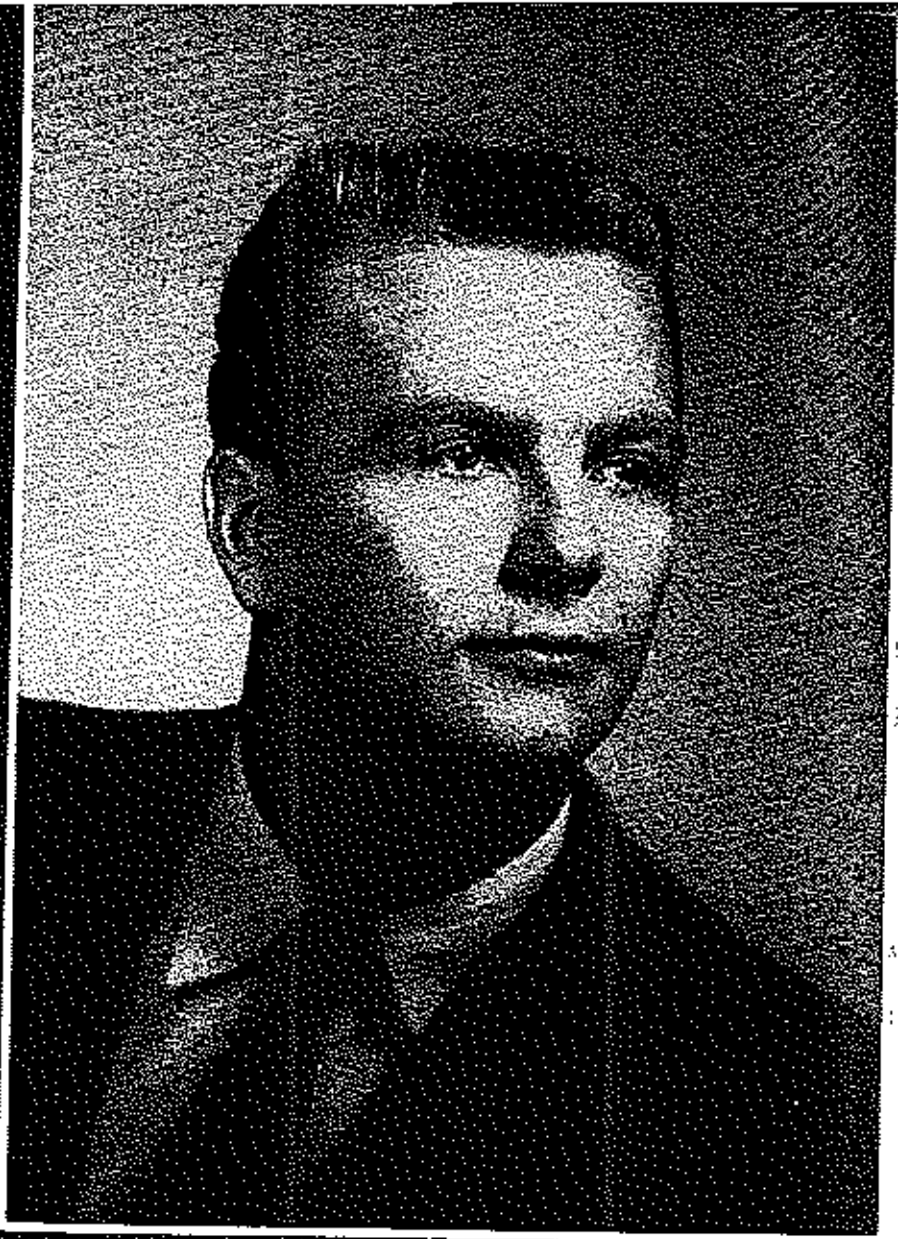
JO ANN MILLER-QUEEN OF POPULARITY AND BEAUTY '57 & '58





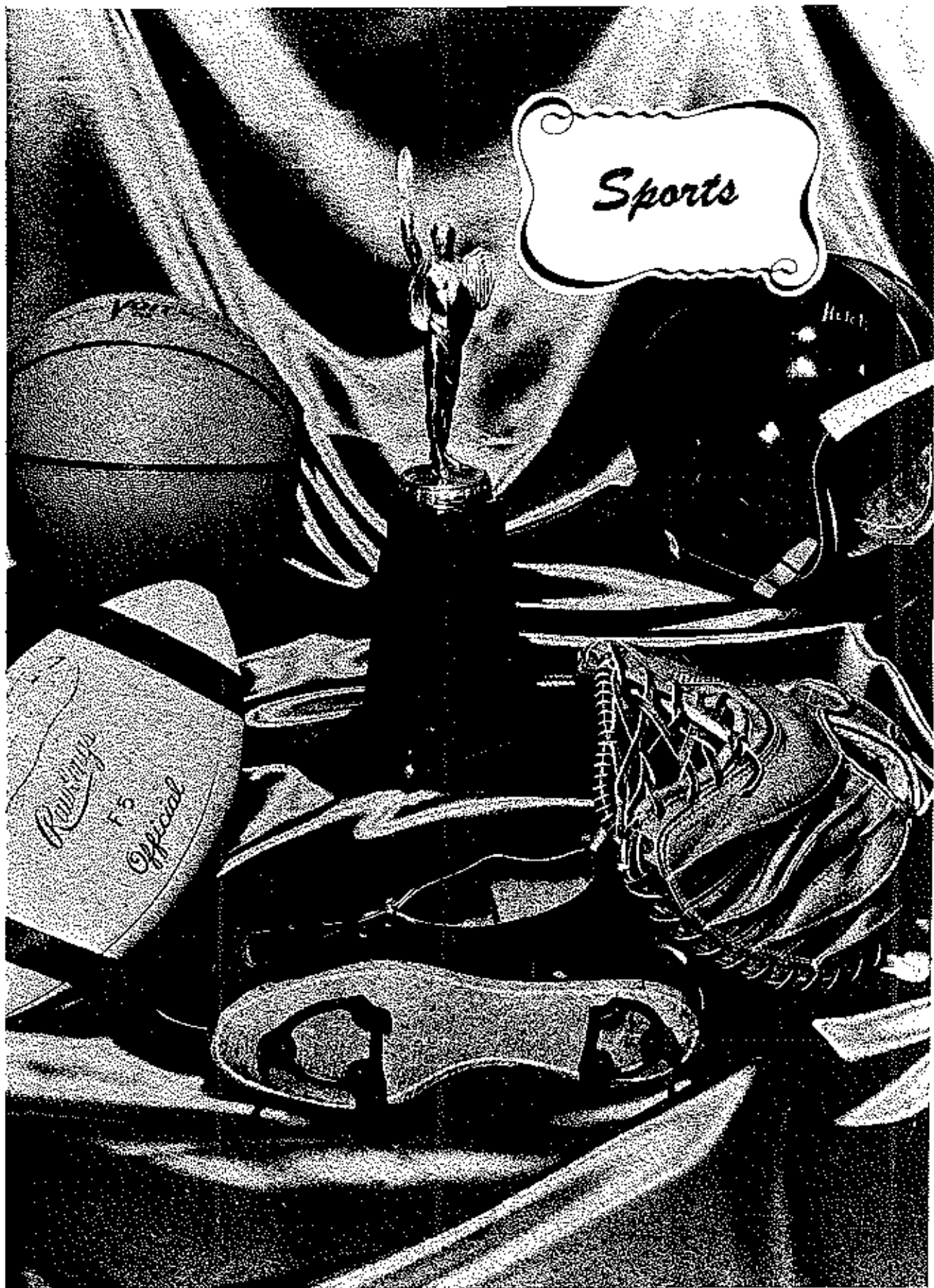
JANICE DYER-BASKETBALL QUEEN '57 & '58





JOE HAMMOND—PRESIDENT OF STUDENT COUNCIL '57 & '58





Sports

Rawlings
F5
Official

Holt



COACH WEIR

RONNIE



DOUG

FRANK



BILL



Eldon High School Basketball Schedule - 1957-58

Nov. 12	Tues.	Eldon at Stover
Nov. 19	Tues.	California at Eldon
Dec. 3	Tues.	Eldon at Osage
Dec. 6	Fri.	Eldon at Nixa
Dec. 7	Sat.	Eldon at Clever
Dec. 9 to 14		Tipton Tournament
Dec. 17	Tues.	Hickman at Eldon
Dec. 20	Fri.	Boonville at Eldon
Jan. 3	Fri.	Eldon at Versailles
Jan. 14 to 18		Fulton Tournament
Jan. 21	Tues.	Camdenton at Eldon
Jan. 24	Fri.	Osage at Eldon
Jan. 28	Tues.	Tipton at Eldon
Jan. 31	Fri.	Eldon at California
Feb. 3 to 8		Eldon Tournament
Feb. 11	Tues.	Versailles at Eldon
Feb. 14	Fri.	Eldon at Tipton
Feb. 18	Tues.	Stover at Eldon
Feb. 21	Fri.	Eldon at Camdenton

DONALD



JOE



DAN



WAYNE



ARLEN



BILL



CHARLIE

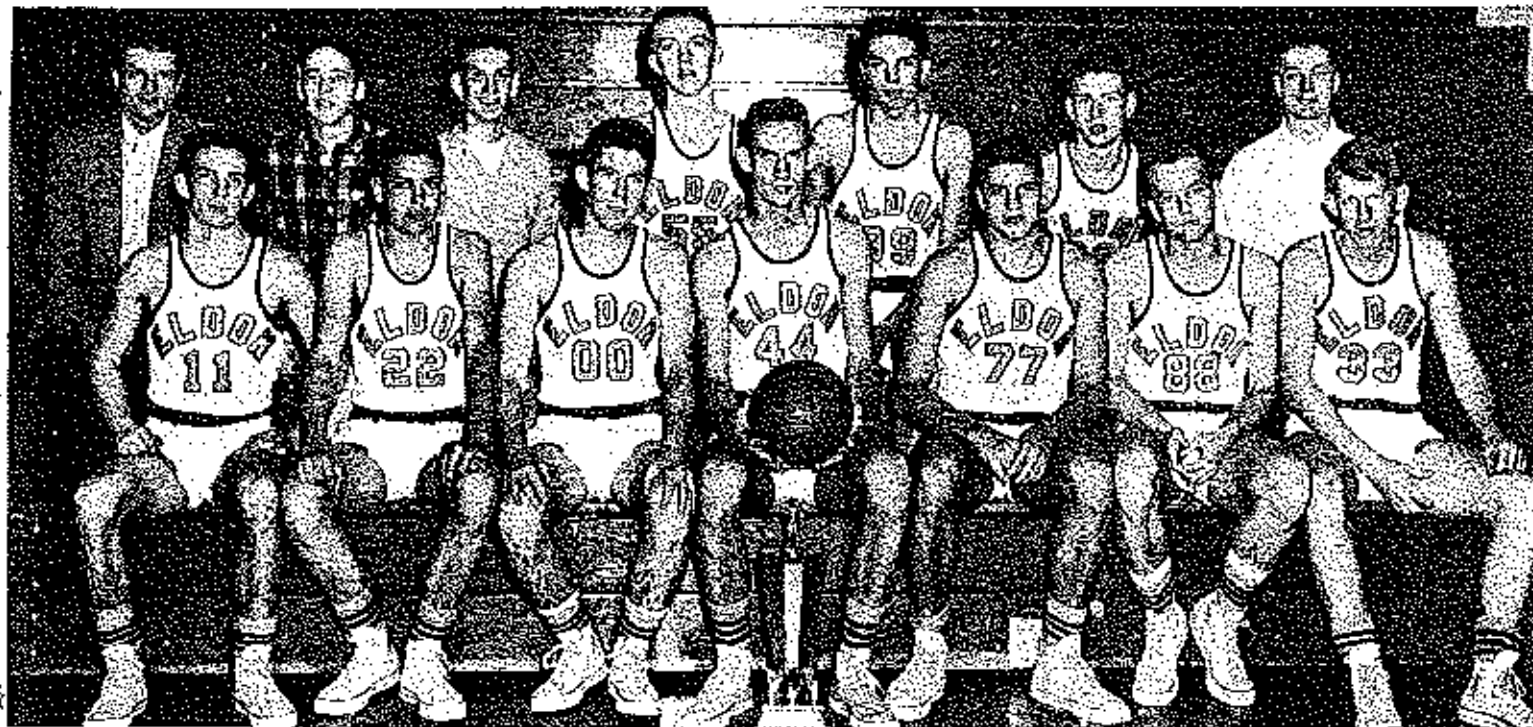


CHUCK



DENNIS





"A" Team Basketball

FIRST ROW: Ronald Brown, Dennis Thompson, Charles Pope, Wayne Scott, Don Reed, Joe Hammond, Frank Clark. SECOND ROW: Coach Harold Weir, Bill Bear, Bill Phillips, Douglas Keu, Danny Small, Arlen Keys, Charles Thornburgh.

"B" Team Basketball

FIRST ROW: Duwin Wood, Tom Henley, George McDaniels, Charles Hayes, Clifford McLalaly, Larry Nickell, David Frank, Barry Hoskins, John Atteberry. SECOND ROW: Bill Phillips, Duncie Voss, Ronald Carroll, Ernest Boyd, Clifford Simmons, Mountain Seuhore, Ed Gump, Roger Van Paul, Ronald Kingery. THIRD ROW: Coach Harold Weir, Dennis Vez Hooper, Charles Clark, Brent Crane, Jim Ditrwiddle, Kenneth Robb, Bill Bear, Charles Thornburgh.





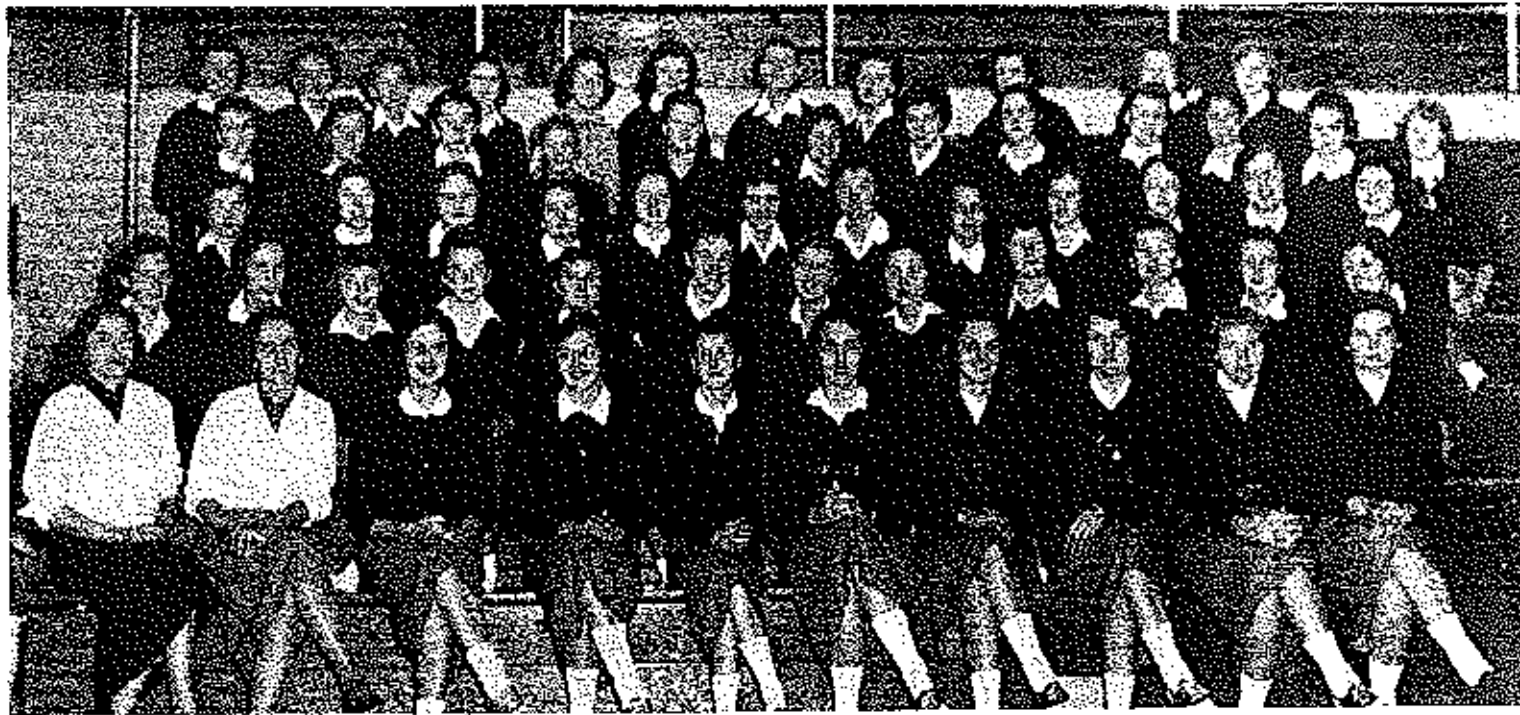
"E" Club

FIRST ROW: Ronald Brown, Frank Clark, Joe Hammond, Douglas Kehr, Bill Bear, Wayne Scott, Don Reed, David Gerence. SECOND ROW: Gene Castron, Charles Thornbrugh, Ronald Carroll, Mike Knipp, Dennis Thompson, David Frank, Charles Pope. THIRD ROW: Coach Harold Weir, Bill Phillips, George McDaniel, Arlen Kaye, Larry Bond, John Campbell.

Junior High Basketball Team

FIRST ROW: Dwain Wood, Eddie Gump, Jim Dinwiddie, Clifford Simmons, Ernest Boyd, Roger Van Pool, Don Vann. SECOND ROW: Coach Harold Weir, Bill Phillips, Bill Bear, Ronald Kingery, Mike McKay, Brent Crane, Charles Thornbrugh.





Pep Club

FIRST ROW: Mrs. Sarah Brockman, Miss Martha Spinks, Pal Reynolds, Carolyn Shelhart, Jo Ellen Conlon, Joyce Stark, Linda Hickey, Linda Pace, Roberta Harvey, Augusta Jackson. SECOND ROW: Beverly Volkart, Sue Gerhart, Carol Kehr, Kay Davies, Billie Hinds, Nancy McMullin, Sandra Davis, Anita Cochran, Linda Elkes, Barbara Sanning, Vickie Stark, Jenice Vernon. THIRD ROW: Barbara Apperson, Ruth Song, Pat Claxton, Darlene Taylor, Norma Cox, Lueta Thompson, Carolyn Taylor, Doana Allan, Joyce Taylor, Linda Schick, Barbara Imier, Barbara Harness. FOURTH ROW: Geraldine Dene, Sonja Bohm, Shirley Blume, Carolyn Cantwell, Darlene Steenburger, Diana Beasford, Frances Kulp, Leotta Jackson, Judy Cunningham, Kaula Kays, Betty Apperson, Joyce Begley. FIFTH ROW: Dana Jester, Judy Walker, Betty Snook, Pat Cartney, Ariene Taylor, Beth Vernon, Jackie Crane, Barbara Melton, Delores Duffield, Wanda Simmons, Joyce Kehr. Not Shown: Audra Colhoun.

"A" Team Cheerleaders

FIRST ROW: Sue Davies, Jenice Dyer. SECOND ROW: Mary Meyer, Jlee Conlon. Not Shown: Pal Callison.



"B" Team Cheerleaders

FIRST ROW: Rosie Robbins, Jane Fry. SECOND ROW: Pat Taylor, Jo Ann Weather, Carol Meyer.





Senior High Boys' Softball

FIRST ROW: Joe Hammond, Don Reed, Frank Clark, Wayne Scott, David Currence, Gene Catron. SECOND ROW: Larry Bond, George McDaniel, Arlen Keys, Dennis Thompson, Charles Pope, David Frank. THIRD ROW: Coach Harold Weir, Bill Phillips, Bill Bear, Charles Thornbrugh, Alton Pond, David Woolley.

Junior High Boys' Softball

FIRST ROW: Roger VanPool, Jimmy Dinwiddie, Eddie Gump, Buddy Simmons, Len West, Myron Scott, Mike Mulkey. SECOND ROW: Dancy Scheite, Billy Bob Walterscheid, Dwain Wood, Donald Vann, Randle Beard, Dennis VanGooser, Bruce Elzwechek, Ronnie Jesse. THIRD ROW: Coach Harold Weir, Bill Phillips, Bill Bear, Chuck Thornbrugh.





Senior High Girls' Softball

FIRST ROW: Sue Davies, Judy Cunningham, Linda Hickey, Betty McKinley, Linda Pace, Joyce Stark. SECOND ROW: Jane Fry, Jo Ann Heather, Jo Ellen Gibson, Arlene Taylor, Pat Taylor, Carol Meyer, Lucille Wille. THIRD ROW: Carolyn Taylor, Buenta Thomson, Shirley Stone, Coach Ed Hodges.

Junior High Girls' Softball

FIRST ROW: Sue Davies, Donna Vernon, Donna Dyer, Barbara Crowder, Margaret Bowden, Betty Smock, Carol Kehr. SECOND ROW: Mary Tedrick, Betty Buchanan, Marilyn Burd, Sharon Green, Frances Kline, Coach Ed Hodges.





Senior High Volleyball

FIRST ROW: Betty McKinley, Lovea Trammell, Jo Anna Reynolds, Linda Hickey, Joyce Clark, Sue Davies. SECOND ROW: Carol Meyer, Pat Taylor, Susana Thomson, Arlene Taylor, Deiores Duffield, Carolyn Taylor, Nellie Howser. THIRD ROW: Coach Ed Hodges, Leotta Jackson, Dorna Jester, Billie Hinds, Shirley Stone, Sas Bowden, Jerri Eiken.

Jr. High Volleyball

FIRST ROW: Carol Rains, Sue Corhart, Marilyn Bond, Lea Etta Rogers, Mary Tedrick, Kay Davies. SECOND ROW: Leotta Jackson, Phyllis Wallis, Carol Kels, Janice Vernon, Betty Buchanan, Betty Snook. THIRD ROW: Barbara Crowder, Judy Shephard, Jo Ann Densten, Judy Holdt, Margaret Nowack, Coach Ed Hodges.





"RON"



"GREEDY"



"TRAMBONE"



"TEARS"



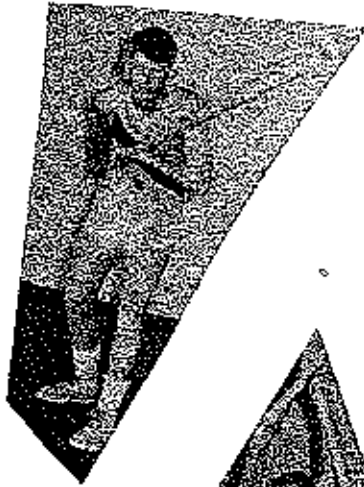
"MONK"



TRACK ACTIVITIES



"JOHNNY"



"UGLY"

"FERRY"

"FUZZY"



"SPINEY"

