



REFERET



***Board of Education of Eldon
Administrative Unit R-1***

FIRST ROW: Mrs. Doris Millburn, Secretary, Mr. Dean Clawson, President, Mr. Lyle D. Hershey, Superintendent. SECOND ROW: Mr. Roscoe Deasy, Member, Mr. H. N. Graham, Member.

Handwritten notes and signatures, including names like 'Mrs. Millburn', 'Dean Clawson', 'Lyle D. Hershey', 'Roscoe Deasy', and 'H.N. Graham'. Some notes appear to be dates and times, such as '10:00 am', '11:30 am', and '1:00 pm'. There are also some illegible scribbles and initials.

Vertical handwritten notes on the left margin, including names like 'Mrs. Millburn', 'Dean Clawson', 'Lyle D. Hershey', 'Roscoe Deasy', and 'H.N. Graham'. The notes are partially cut off by the left edge of the page.

...can you!
See you are
a nut. Always
be as fun as you are
now, and you will have
hundreds of friends. But remember
this, be yourself, and not
someone else. Good luck in every
thing you do & no one will go
from-

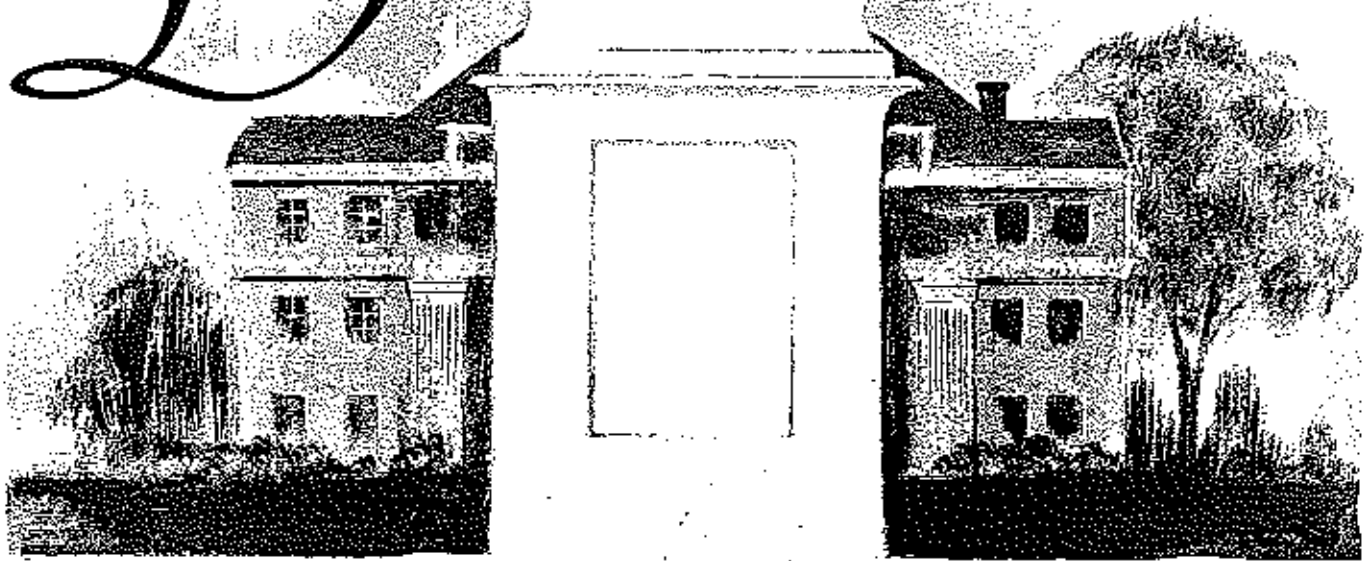
I just thought
I'd say
Barbara

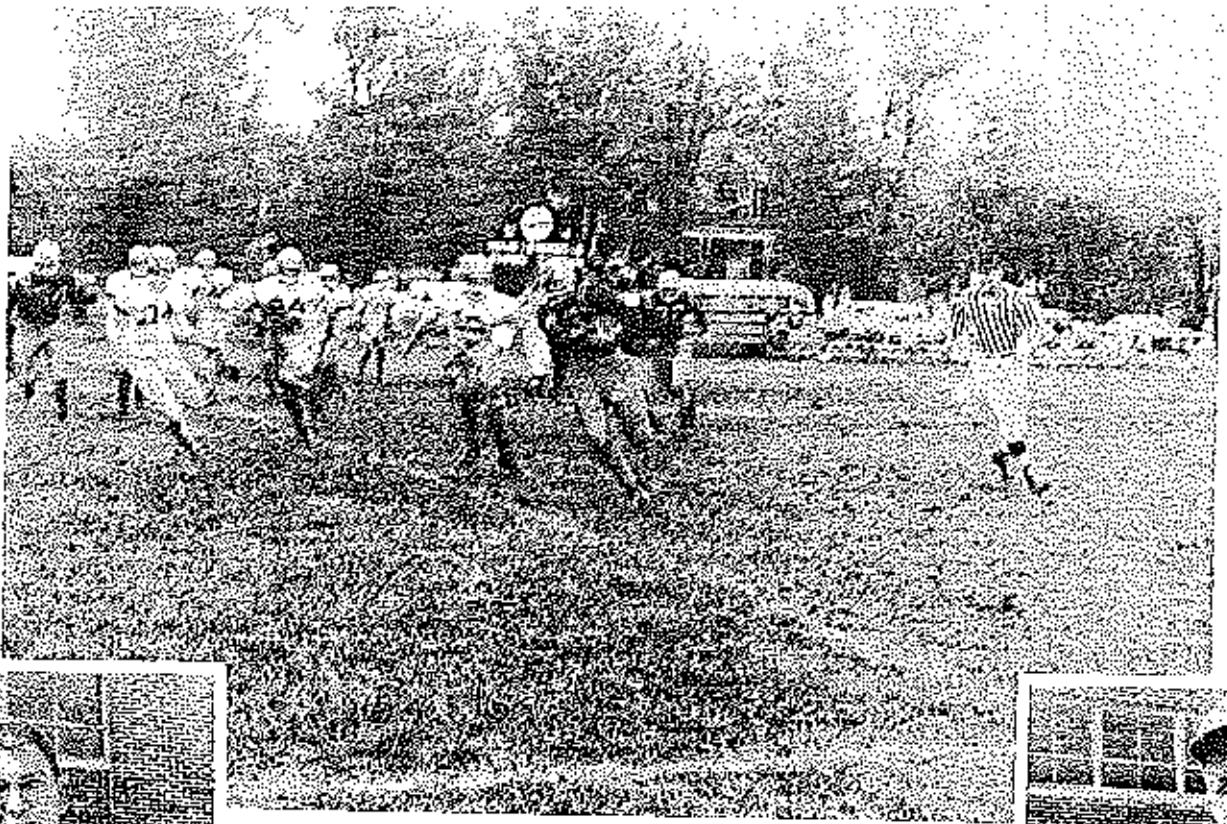
...can you!
See you are
a nut. Always
be as fun as you are
now, and you will have
hundreds of friends. But remember
this, be yourself, and not
someone else. Good luck in every
thing you do & no one will go
from-



L

edication



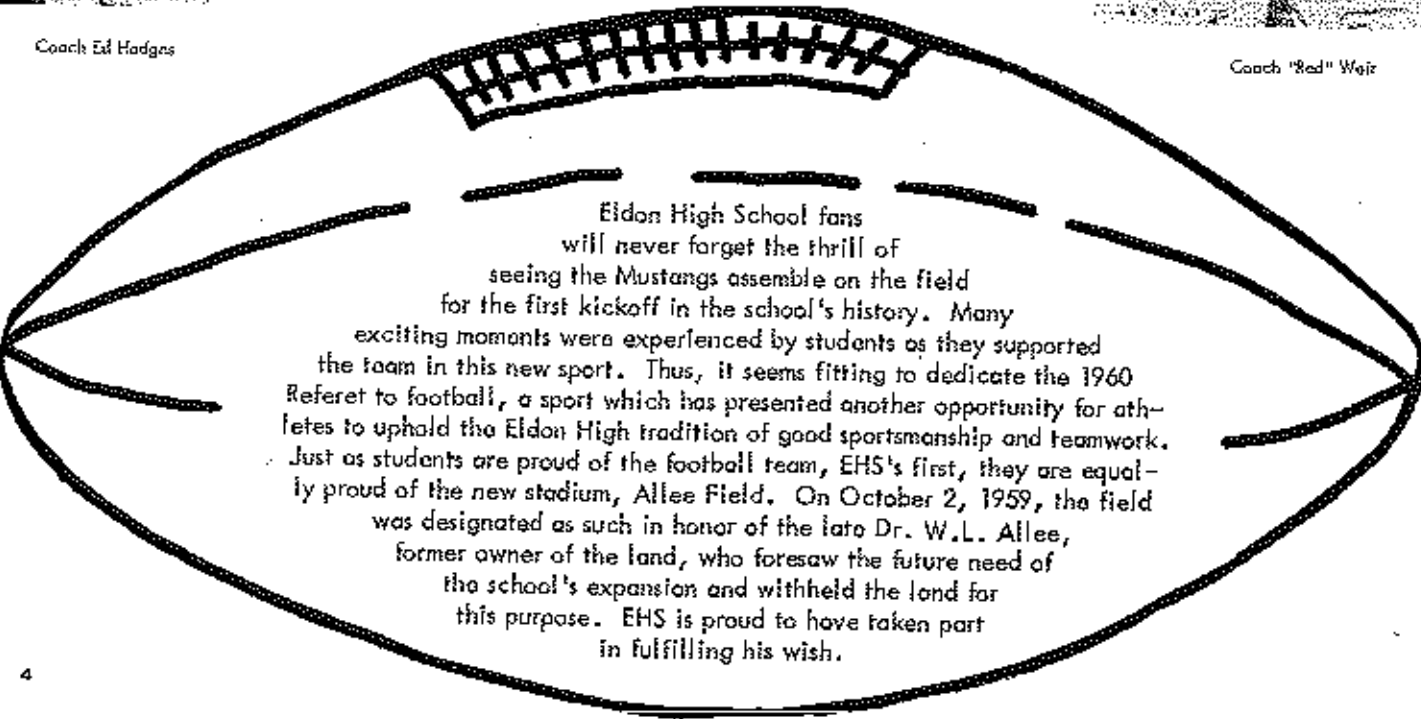


Coach Ed Hedges



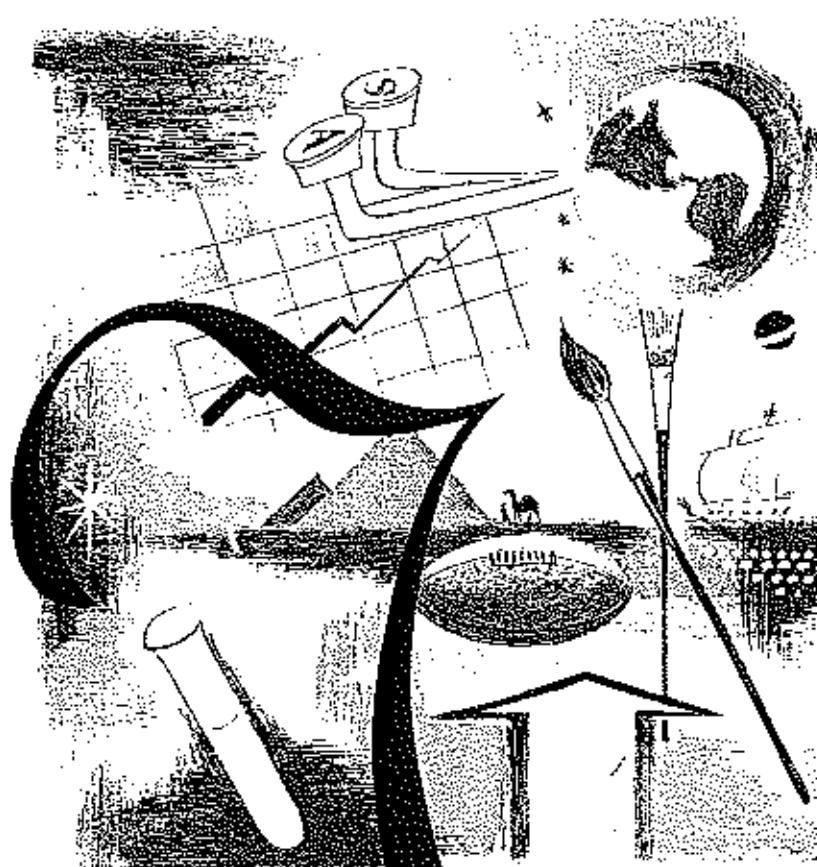
Coach "Red" Weir

Allee Field Home of The Mustangs



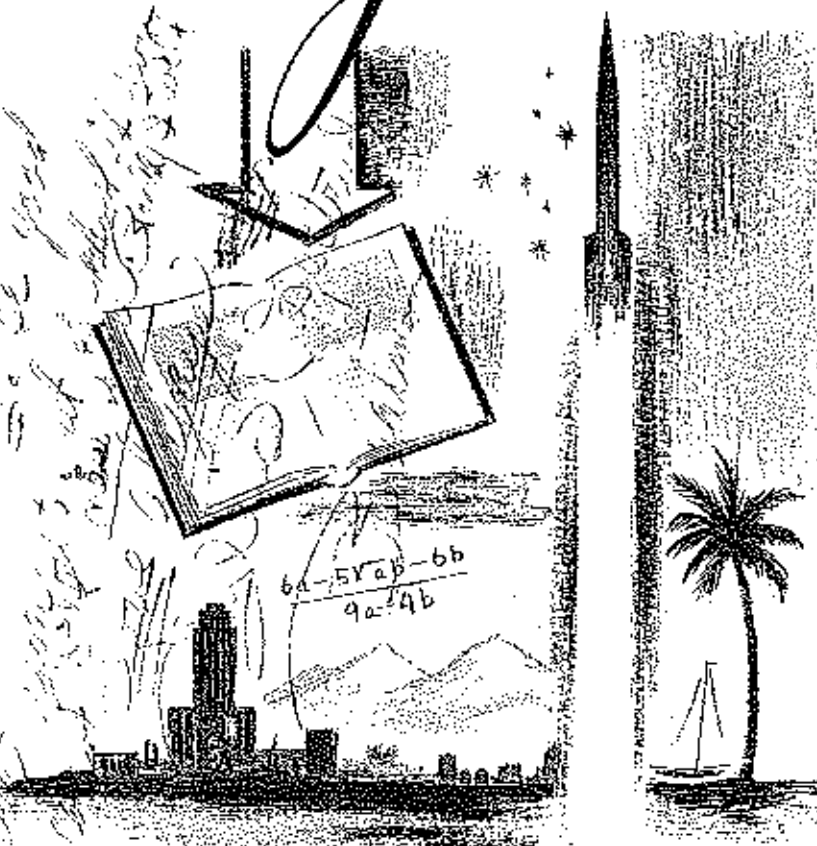
Eidon High School fans will never forget the thrill of seeing the Mustangs assemble on the field for the first kickoff in the school's history. Many exciting moments were experienced by students as they supported the team in this new sport. Thus, it seems fitting to dedicate the 1960 Referet to football, a sport which has presented another opportunity for athletes to uphold the Eidon High tradition of good sportsmanship and teamwork. Just as students are proud of the football team, EHS's first, they are equally proud of the new stadium, Allee Field. On October 2, 1959, the field was designated as such in honor of the late Dr. W.L. Allee, former owner of the land, who foresaw the future need of the school's expansion and withheld the land for this purpose. EHS is proud to have taken part in fulfilling his wish.

Dave,
 It's been great
 knowing you. You
 a great friend and
 pal. I'll always
 remember the day
 you called for "Charles"
 and my mother
 answered. Best of
 luck in your future
 years and in every
 thing you try.
 Charles
 Wad
 Clark



Faculty

David, I will always
 remember you and
 your family. I will
 always love and
 respect you. I will
 always be your
 friend. I will always
 be your friend. I will
 always be your friend.



64-57ab-66
 9a-4b



MARTHA SPINKS
English and Speech

*Dear, I have been
you have been
a pleasure as well
as a pain! You have
changed from the
mean little fresh
you were!
Martha Spinks*



RUTH LUPARDUS
Library



LORRAINE EXOWLER
Study Hall



GARY CORYELL
Commerce



JOHN DOWLER
Social Studies



ED HODGES
Coach



MARY VERNON
Homeworking



OLIVER STEPHENS
Social Studies

Williston



ALICE VERNON
World History



CLETUS HELMS
Coach



JERRY FRIESNER
Industrial Arts



GERALDINE BALDWIN
Music



FREDA LANE
Mathematics



VIRGIL JURGENSMEYER
Coordinator

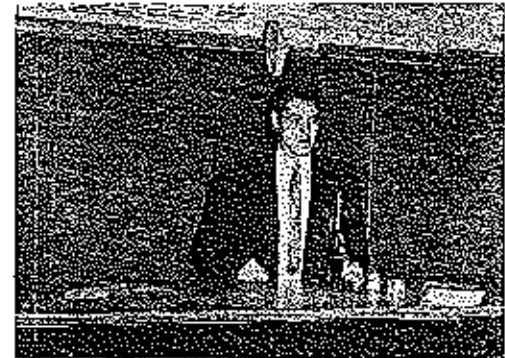
*David
I have been
a student to
you maybe you
should have put a little
more effort in your
school work. It
hasn't been nice
Virgil*



EUNICE STEPHENS
Commerce



RICHARD BLAKE
Guidance Counselor



LOUIS McCAULEY
Science



SARAH BROCKMAN
English and Publications



WALTER MOONEY
Social Studies and English

CLIFFORD GREENWAY
Vocational Agriculture





Superintende

Lyle D. Hanley



Secretary To The Superintendent

Deris McEwan



Secretary To The Principal

Maxine Shaw

Principal

E. Max Hunter



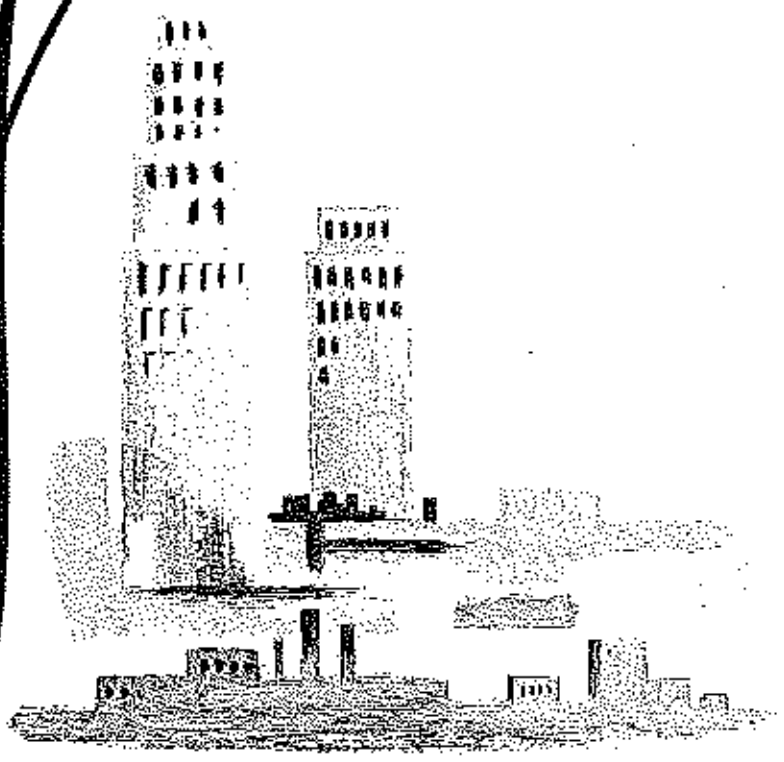
Handwritten text along the left margin, possibly a list of names or a page number.



Love,

To a real swell guy who I have enjoyed knowing very much, I'll never forget the 8th grade and all the fun we had. Remember that glass of water that you put on my fingers at 8th grade banquet. I think I spelled "the water didn't I". Those were really the "good ole days". Then there was your sophomore year on Sadie Hawkins Day and swimming in the creek. Gave I really didn't know that you could sing as well as you can tell this year. I was sure rooting for you in contest. You are really a wonderful guy. I hope you have all the luck you deserve. Best to you Always,

Kinda Schick





GEORGE MCDANIEL
 Mixed Chorus 2,3,4; Boys' Glee Club 2,3,4; Boys' Glee Club Librarian 4; Vocal Clinics 3; Music Contests 2,3,4; Christmas Program 2,3,4; Oklahoma 3; Spring Show 2,4; Sparkletones Vocalist 3; Fall Festival 2,3,4; Art Club 3; E Club 2,3,4; Thespian 2,3,4; Thespian Historian 4; Student Council 2,3,4; Student Council President 4; Track 2,3,4; A Basketball 3,4; B Basketball 2; Varsity Football 4; Senior Softball 2,3; One-Act Plays 2,3,4; Three-Act Play 3; Boys' State 3; State Student Council Convention 3,4; Basketball Maid Escort 3,4; Trenton Junior High School, Trenton, Missouri 1; King of Hearts Candidate 4.



ANITA COCHRAN
 Messiah 1; Christmas Program 2; Fall Festival 2,3; Audio-Visual Club 3; Audio-Visual Club Treasurer 3; Pop Club 1,2,3,4; Spanish Club 2; Senior High Volleyball Manager 3,4; Junior High Volleyball Manager 3; Senior High Softball Manager 3; Junior High Softball 1; Intramurals 1; Maroon and Gold Staff 4; Referee Business Manager 4; One-Act Plays 2; Monitor 3; Piano Preliminary Contest 1.

JOYCE TAYLOR
 Mixed Chorus 2,3; Girls' Glee Club 2,3; Vocal Clinics 2,3; Music Contest 2,3; Messiah 1; Christmas Program 2,3; Oklahoma 3; Spring Show 2; Fall Festival 2,3,4; Audio-Visual Club 3; Audio-Visual Secretary 3; Pop Club 1,2,3; Spanish Club 2; Spanish Club Secretary 2; Junior High Softball 3; Intramurals 2,4; Maroon and Gold Staff 4; Referee Staff 4; Referee Co-Assistant; Editor 4; Library Staff 2; Honor Society 2,3,4; Honor Society Vice-President 4.



EDWARD BEANLAND
 Messiah 1; C.O.E. 3,4; C.O.E. Vice-President 4.

LINDA SCHICK
 Mixed Chorus 1,2,3,4; Girls' Glee Club 1,2,3,4; Girls' Glee Club President 3,4; Vocal Clinics 1,2,3,4; Music Contests 1,2,3,4; Messiah 1; Christmas Program 2,3,4; Oklahoma 3; Spring Show 1,2,4; Fall Festival 2,3,4; Fall Festival Maid 4; Future Teachers of America 3,4; Future Teachers of America Secretary 3; Pop Club 1,2,3,4; Basketball Maid 4; Thespian 4; Thespian Secretary 4; Student Council 3,4; Spanish Club 2; Junior High Softball 1; Intramurals 3,4; Library Staff 2,4; Monitor 4; Honor Society 2,3,4; Honor Society Vice-President 3; Senior Class Secretary 4; Queen Of Hearts 4.



GALE DENISON
 Audio-Visual Club 1,2; C.O.E. Club 4; Asto Club 3; Student Council 1,2; Intramurals 1; Monitor 1.



PAT CLAXTON
 Christmas Program 2; Fall Festival 2,4; Pop Club 1,2,3,4; Student Council 4; Student Council Secretary 4; District Student Council Convention 4; State Student Council Convention 4; Maroon and Gold Staff 4; Referee Staff 4; Referee Assistant; Editor 4; One-Act Plays 2; Honor Society 3,4; Honor Society Secretary-Treasurer 2; Basketball Maid 4; Girls' State Alternate 4; William Christian Junior High School, Independence, Missouri 1.

RAYMOND BOND
 Mixed Chorus 1,2,3,4; Boys' Glee Club 1,2,3,4; Boys' Glee Club Librarian 3; Vocal Clinics 1,2,3,4; Bond 1,3,4; Pop Band 1,3,4; Marching Band 3,4; Music Contests 1,2,3,4; Messiah 1; Christmas Program 1,2,3,4; Oklahoma 3; Spring Show 1,2,4; Fall Festival 1,2,3,4; Fall Festival Escort 4; Future Teachers of America 3,4; Future Teachers of America Vice-President 3; Future Teachers of America President 4; Future Teachers of America Convention 4; Thespian 3,4; Thespian Scriba 4; Library Club 1; Spanish Club 2; One-Act Plays 3; Speech Contests 4; Library Staff 1,3,4; Honor Society 2,3,4; Boys' State 3.





DAVID PACE

Mixed Chorus 1, 2, 4; Boys' Glee Club 1, 2, 4; Vocal Clinics 1, 2, 4; Music Contests 1, 2, 4; Messiah 1; Christmas Program 2, 4; Spring Show 1, 2, 4; Fall Festival 1, 2, 3, 4; C. O. E. 3; E Club 4; Student Council 4; A Basketball 4; Varsity Football 4; Junior High Softball 1; Intramurals 2; Basketball Mtd Escort 4; All-Conference Football Team 4; Teen-Age Driving Rodeo 3; King Of Hearts Candidate 4.



JACKIE CRANE

Mixed Chorus 1, 2, 3, 4; Girls' Glee Club 1, 2, 3, 4; Vocal Clinics 1, 2, 3, 4; Messiah 1; Christmas Program 2, 3, 4; Oklahoma 3; Spring Show 1, 2, 4; Fall Festival 3, 4; Fall Festival Mtd 4; Pep Club 1, 2, 3; Student Council 4; Spanish Club 2; Junior High Volleyball 1; Junior High Softball 1; Intramurals 1, 2; Maroon and Gold Staff 4; Maroon and Gold Assistant Editor 4; Referee Staff 4; Referee Editor 4; Library Staff 3; Homecoming Parade Marshal 4; Queen Of Hearts Candidate 4; Music Contest 1, 2, 3, 4.

DONNA ALLEN

Girls' State 3; Mixed Chorus 2, 3, 4; Girls' Glee Club 1, 2, 3, 4; Vocal Clinics 2, 3, 4; Music Contests 1, 2, 3, 4; Messiah 1; Christmas Program 2, 3, 4; Oklahoma 3; Spring Show 2, 4; Fall Festival 2, 3, 4; Future Teachers of America 3, 4; Future Teachers of America Treasurer 4; Pep Club 1, 2, 3, 4; Spanish Club 2; Junior High Softball 1; Intramurals 1, 2, 3, 4; Maroon and Gold Staff 4; Referee Staff 4; Library Staff 4; Honor Society 2, 3, 4.



MIKE CRAIG

Pep Band 1; Messiah 1; Christmas Program 2; Fall Festival 1, 2, 3, 4; Fall Festival Escort 1; Audio-Visual Club 2; Science Club 1, 3; E Club 4; Thespian 4; Student Council 2; Track 4; Varsity Football 4; Intramurals 4; One-Act Plays 4; Speech Contests 1; Library Staff 1; Junior Class Vice-President 3; Boys' State All-state 3; Color Bearer 1.

PAULA JOBE

Future Homemakers of America 2, 3, 4; Future Homemakers of America Secretary-Treasurer 2, 3; Future Homemakers of America President 4; Library Staff 3; Hostess 2; Honor Society 3, 4; Honor Society Secretary-Treasurer 4; Fall Festival 4.



GENE HAYNES

Junior Class President 3; Future Farmers of America 1, 2, 3, 4; Future Farmers of America President 4; Future Farmers of America Secretary 3; Chairman of Future Farmers of America Parliamentary Procedure Team 2; Farm Mechanics Award 3; Student Council 3, 4; Library Staff 3; Honor Society 2, 3, 4.

SHIRLEY SLONE

Girls' Glee Club 1, 2; Vocal Clinics 1, 2; Music Contests 1; Messiah 1; Spring Show 1; Future Homemakers of America 1; Pep Club 1, 2; Senior High Volleyball 3, 4; Junior High Volleyball 1; Senior High Softball 2, 3; Junior Softball 1; Intramurals 1; Maroon and Gold Staff 3; Referee Staff 3.



ROBERT JENKINS

Christmas Program 4; Fall Festival 2, 3; Audio-Visual Club 4; Audio-Visual Club President 4; Science Club 2; Auto Club 3; Intramurals 1; Mantle 1, 2.





REECE SPARKS
 Christian Program 4; Fall Festival Escort 3; Auto Club 3, 4; Track 1; Intramurals 1..

BONNIE GLOSHEN
 Art Club 3; Future Homemakers of America 4; Pep Club 1, 2; Spanish Club 2; Junior High Softball 1; Intramurals 1, 2, 4; Mooton and Gold Staff 4; Referee Staff 4; Hostess 2.



BETTY SUE EILERTS

Mixed Chorus 1, 3, 4; Boys' Glee Club Accompanist 3, 4; Girls' Glee Club 1, 3, 4; Vocal Clinics 1, 3, 4; Band 1; Pep Band 1; Music Contests 1, 3, 4; Measiah 1; Christmas Program 3, 4; Oklahoma 3; Spring Show 1; Sparkletans 4; Fall Festival 1, 3, 4; Audio-Visual Club 3; Pep Club 1, 3, 4; Pep Club Vice-President 4; Student Council 3, 4; Junior High Volleyball 1; Junior High Softball 1; Intramurals 1, 4; One-Act Plays 3, 4; Speech Contests 4; Monitor 1; Honor Society 3, 4; Color Bearer 1; Girls' State Alternate 3; Student Council Safety Convention 4; D.A.R. Award 4; Mount Salem Scholastic Academy 2.



ALAN HANDLEY
 Future Formers of America 1, 2; C. O. E. 3.

WINONA AHART

Girls' Glee Club 2; Fall Festival 4; C. O. E. 3, 4; Hostess 2.



STANLEY OPIE
 Future Formers of America 1, 2, 3; C. O. E. 4.

BRENDA COFFMAN

Mixed Chorus 1; Fall Festival 4; C. O. E. 3, 4; Hostess 2; Monitor 1..

DON SPIELER
 Emporia High School 1; Knobloster High School 2; Warrensburg High School 3; Pleasant Hill High School 4.





TOM LOVING
 Fall Festival 3; Audio-Visual Club 4;
 Science Club 2, 3; Student Council
 3, 4.

NANCY McMILLIN
 Girls' Glee Club 1; Music Contests
 1, 3; Oklahoma 3; Spring Show 2; Art
 Club 3; Pep Club 1, 2; Hostess 2; Host-
 ess Club Secretary 2; Freshman Maid
 1.



LINDA JARRETT
 Mixed Chorus 1, 2; Girls' Glee Club
 1, 2; Vocal Clinics 1, 2; Messiah 2;
 Christmas Program 1; Spring Show 1, 2;
 Fall Festival 3; Fall Festival Maid 3;
 C. O. E. 3, 4; C. O. E. Secretary-
 Treasurer 3; C. O. E. President 4;
 Spanish Club 2; Merion and Gold
 Staff 2; Referat Staff 2.



CHARLES HAYES
 Fall Festival 1, 4; Fall Festival Escort
 1; E Club 3, 4; E Club President 4; A
 Basketball 3, 4; B Basketball 1, 2; Var-
 sity Football 4; Senior High Softball
 2, 3; Junior High Softball 1; Intra-
 muros 1; Basketball Queen Escort
 4; Basketball Maid Escort 2.

HELEN SPRATT
 Girls' Glee Club 1, 2; Vocal Clinics
 1.



GARY POTZMANN
 Mixed Chorus 1, 2, 3, 4; Boys' Glee
 Club 1, 2, 3, 4; Boys' Glee Club Sec-
 retary 4; Boys' Glee Club Librarian 2;
 Boys' Glee Club Monitor 2; Vocal
 Clinics 1, 2, 3, 4; Music Contests 1, 2,
 3, 4; Messiah 1; Christmas Program 1,
 2, 3, 4; Oklahoma 3; Spring Show 1, 2,
 4; Fall Festival 1, 2, 3, 4; Audio-Visual
 Club 3, 4; Science Club 4; Library
 Club 2; One-Act Plays 3; Library
 Staff 2, 3; Marching Band Color Bearer
 3, 4.

PAT THOMSON
 Fall Festival 2, 3; Art Club 3; Art
 Club Secretary 3; C. O. E. 4; Pep
 Club 1; Spanish Club 2; Junior High
 Volleyball 1; Junior Softball 1; Soph-
 omore Maid 2; Junior Maid 3; Basket-
 ball Maid 4.

CHARLES BARD
 Fall Festival 3, 4; Audio-Visual Club
 2, 4; Audio-Visual Club Vice-Presi-
 dent 4; Auto Club 2, 4; E Club 4; Var-
 sity Football 4; Intramurals 1, 2.



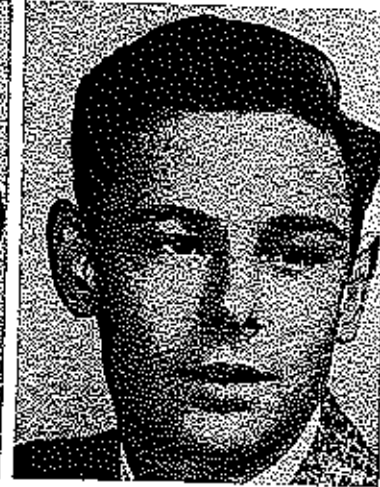


J.C. HOWELL
 Mixed Chorus 4; Boys' Glee Club 4;
 Christmas Program 4; Fall Festival
 3, 4; Fall Festival Escort 4; Audio-
 Visual Club 3; E Club 3, 4; Student
 Council 4; A Basketball 3, 4; Varsity
 Football 4; Senior Class President 4;
 Interclass Track Meet 3, 4; Way Sil-
 vey Award 3; Basketball Maid Escort
 3, 4; Student Council Safety Conven-
 tion 4; Grand Junction High School,
 Colorado 1, 2; King Of Hearts 4.



EDWARD CROWN
 Auto Club 4.

BARBARA WEEKS
 Mixed Chorus 3; Girls' Glee Club
 3; Mission 3; Fall Festival 3; Junior
 High Softball 1; Intramurals 1, 2, 3, 4;
 Maroon and Gold Staff 4; Referee
 Staff 4.



LEOTTA JACKSON
 Mixed Chorus 1, 2, 3, 4; Girls' Glee
 Club 1, 2, 3, 4; Vocal Clinics 1, 2, 3, 4;
 Band 1, 2, 3, 4; Pep Band 1, 2, 4; Music
 Contest 1, 2, 3, 4; Mission 1; Christmas
 Program 2, 3, 4; Oklahoma 3; Spring
 Show 1, 2, 4; Sparkletones 3, 4; Fall
 Festival 1, 2, 4; Future Teachers of
 America 3; Future Teachers of
 America President 3; Pep Club 1, 2, 4;
 Pep Club Secretary 4; Thespian 2, 3, 4;
 Thespian President 4; Student Council
 1; Junior High Volleyball 1; Junior
 High Softball 1; Intramurals 1, 4;
 Manager 2; Maroon and Gold Staff
 4; Maroon and Gold Editor 4; Referee
 Staff 4; One-Act Plays 1, 2, 3, 4;
 Three-Act Play 3; Speech Contests
 1, 2, 3, 4; Monitor 3, 4; Honor Society
 2, 3, 4; Honor Society Vice-Presi-
 dent 3; Marching Band 2, 3, 4; Basket-
 ball Maid 4; Student Council Safety
 Convention 4; Queen Of Hearts Can-
 didate 4.

GLADYS DINWIDDIE
 Fall Festival 4; Audio-Visual Club 4;
 Audio-Visual Treasurer 4; Student
 Council.



JACK APPERSON
 C.O.E. 4; C.O.E. Convention 4.

SUE HICKS
 Future Teachers of America 4; Future
 Teachers of America Librarian 4; Ma-
 roon and Gold Staff 4; Referee Staff
 4; One-Act Plays 4; Riteaux Senior
 High 1, 2, 3.

LEWIS ROGERS
 Future Farmers of America 1, 2, 3;
 Track 1; Junior High Softball 2.





LARRY BOND
Mixed Chorus 1,2,3,4; Boys' Glee Club 1,2,3,4; Vocal Clinics 2,3; Music Contests 1,2,3,4; Christmas Program 1,2,3,4; Oklahoma 3; Spring Show 1,2,4; Future Farmers of America 1; E Club 2,3,4; Track 1,3,4; Varsity Football 4; Senior Softball 2,3; Junior Softball 1; Fall Festival Escort 3.

BARBARA ENLER
Mixed Chorus 1,2,3,4; Girls' Glee Club 1,2,3,4; Girls' Glee Club Secretary-Treasurer 4; Vocal Clinics 2,3,4; Music Contests 1,2,3,4; Messiah 1; Christmas Program 2,3,4; Oklahoma 3; Spring Show 1,2,4; Future Teachers of America 3,4; Future Teachers of America Secretary 4; Pep Club 1,2,3,4; Spanish Club 2; Junior High Softball 1; Intramurals 4; Maroon and Gold Staff 4; Maroon and Gold Business Manager 4; Referee Staff 4; One-Act Plays 1; Library Staff 2,3; Honor Society 2,3,4.



SHARON EKSTAM
Mixed Chorus 1,2,3,4; Girls' Glee Club Vice-President 4; Vocal Clinics 1,2,3,4; Band 1,2,3,4; Band President 3; Pep Band 1,2,3,4; Music Contests 1,2,3,4; Messiah 1; Christmas Program 1,2,3,4; Oklahoma 3; Spring Show 1,2,4; Fall Festival 2,3,4; Bible Club 3,4; Bible Club Vice-President 3; Bible Club Secretary-Treasurer 4; Student Council 3; Maroon and Gold Staff 4; Referee Staff 4; Library Staff 4; Hostess 2; Monitor 4; Honor Society 3,4; Honor Society President 4; Sophomore Class Secretary 2; Girls' State First Alternate 3; Girls' Glee Club 1,2,3,4.



NORMAN BASHORE
Mixed Chorus 1,2,3,4; Boys' Glee Club 1,2,3,4; Vocal Clinics 1,2,3,4; Band 1,2,3,4; Pep Band 1,2,3,4; Music Contests 1,2,3,4; Messiah 1; Christmas Program 1,2,3,4; Oklahoma 3; Spring Show 1,2,4; Sparkletons 3,4; Fall Festival 1,2,3,4; Fall Festival Escort 2; Science Club 3; E Club 2,3,4; Track 1,2,3,4; B Basketball 2,3; Intramurals 1,2; Speech Contests 4.

LINDA EIKEN
Mixed Chorus 1,2,3,4; Girls' Glee Club 1,2,3,4; Vocal Clinics 2,3,4; Band 1,2,3; Pep Band 2,3; Music Contests 1,2,3,4; Christmas Program 1,2,4; Oklahoma 3; Spring Show 1,2,4; Fall Festival 1,2,3,4; Fall Festival Herald 1; C.O.E. 4; Pep Club 2,3; Junior High Softball 1; Hostess 1,2.



LARRY FORD
Mixed Chorus 1,2,3,4; Boys' Glee Club 1,2,3,4; Boys' Glee Club President 4; Vocal Clinics 1,2,3; Band 1,2; Pep Band 1,2; Music Contests 1,2,3,4; Messiah 1; Christmas Program 2,3,4; Oklahoma 3; Spring Show 1,2,4; Fall Festival 1,2,3,4; Fall Festival Escort 2; Science Club 1; Science Club Vice-President 1; E Club 2,3,4; E Club Secretary-Treasurer 4; Thespian 3,4; Thespian Vice-President 4; Track 1,2,3,4; A Basketball 4; B Basketball 3; Basketball Mold Escort 4; Varsity Football 4; Junior High Softball 1; Speech Contests 2,3; Honor Society 3,4.

SHARON MANNING
Mixed Chorus 1,2; Future Teachers of America 3,4; C.O.E. 4; C.O.E. Reporting Secretary 4; Spanish Club 2; Senior High Volleyball 2; Junior High Volleyball 1; Junior High Softball 1; Intramurals 2,3; Library Staff 2; Hostess 2; Honor Society 4.

JERRY LESLIE
Future Farmers of America 1,2,3,4; Parliamentary Procedure Contest 2,3,4.





JIM UNDERWOOD
Boys' Glee Club 1; C. O. E. 3, 4; C. O. E. Convention 3, 4; Silverview Garden High, St. Louis 1.

GERALDINE DANE TEAL
Girls' Glee Club 2; Bible Club 3; Pep Club 2; Marshal. Junior High 1; Fair Park High 2.



N
3
H
SI

JOYCE REES
Hostess 1, 2.



JOHN STICKNEY
Mixed Chorus 1; Christmas Prog 1; Track 1.

Fall
Aut
Cot

BILLIE SUE HINDS
Mixed Chorus 1, 2, 3, 4; Girls' Glee Club 1, 2, 3, 4; Girls' Glee Club Librarian 4; Vocal Clinics 1, 2, 3, 4; Band Librarian 3; Band Treasurer 4; Pep Band 1, 2, 3, 4; Music Contests 1, 2, 3, 4; Messiah 1; Christmas Program 2, 3, 4; Oklahoma 3; Spring Show 1, 2, 4; Fall Festival 1, 2, 3, 4; Art Club 3; Pep Club 1, 2, 3, 4; Pep Club President 4; Therapion 3, 4; Senior High Volleyball 2, 3; Junior High Volleyball 1; Intermurals 3, 4; Maroon and Gold Staff 4; Referee Staff 4; One-Act Plays 3; Speech Contests 3; Girls' State 3; Marching Band 2, 3.



BILL BERKSTRESSER
Mixed Chorus 4; Christmas Prog 4; Future Farmers of America 1, 2; Future Farmers of America Vice-President 4.



MARY JO FARMER
Mixed Chorus 2, 3, 4; Girls' Glee Club 1, 2, 3, 4; Girls' Glee Club Vice-President 4; Vocal Clinics 2, 3, 4; Band 1, 2, 3, 4; Band Vice-President 3; Pep Band 1, 2, 3, 4; Marching Band 2, 3, 4; Messiah 1; Christmas Program 2, 3, 4; Oklahoma 3; Spring Show 1, 2, 4; Fall Festival 1, 2, 3, 4; Science Club 2, 3, 4; Science Club Secretary 2, 3; Science Club President 4; Student Council 4; Student Council Vice-President 4; District Student Council 3; Senior High Softball 3; Intermurals 2, 4; Maroon and Gold Staff 2; Referee Staff 2; Hostess 2; Monitor 3, 4; Junior Class Vice-President 3; Senior Class Vice-President 4.

BILLY REYNOLDS
Spring Show 1; Future Farmers of America 1; Bible Club 3, 4.





SUE KIMBALL
 Fall Festival 4; Audio-Visual Club
 4; Pep Club 3; Intramurals 3, 4; Library
 Staff 3, 4; Hostess 2; Honor Society
 3, 4; Salem High School, Indiana 1.

WANDA WILLIAMS
 Christmas Program 4; Fall Festival 4;
 Science Club 4; C. O. E. 4; Intramurals
 2, 3; Speech Contests 4; Library
 Staff 3.



BARBARA GOYHARD
 Bible Club 4; Stockton 1, 2; Clinex
 Springs 3; Mixed Chorus 4.



SHARON ROBINSON
 Mixed Chorus 1; Girls' Glee Club
 1; Messiah 1; Art Club 3; Bible Club
 4; Spanish Club 2.

MARY ANN TRACY
 Mixed Chorus 1; Girls' Glee Club 1;
 Vocal Clinics 1; Music Contests 1;
 Messiah 1; Spring Show 1; Maroon and
 Gold Staff 2; Refect Staff 2.



SUE SPENCER VERNON
 Girls' Glee Club 1, 2; Band 1, 2, 3;
 Pep Band 1, 2, 3; Music Contests 1;
 2, 3; Spring Show 1, 2; Fall Festival
 2, 3; Future Homemakers of America
 4; Future Homemakers of America
 Songleader 4; Pep Club 3; Junior
 Softball 1; Maroon and Gold Staff 4.



SHERRY HOUSTON
 Girls' Glee Club 1; Future Home-
 makers of America 2, 3, 4; Future
 Homemakers of America Treasurer 2, 3;
 Future Homemakers of America Vice-
 President 3, 4; Fall Festival 4; Hostess
 1; Honor Society 3, 4.

DORIS VERNON
 Mixed Chorus 1, 2, 3; Girls' Glee
 Club 1, 2, 3; Vocal Clinics 1, 2, 3;
 Music Contests 1, 2, 3; Messiah 1;
 Christmas Program 2, 3; Oklahoma
 3; Spring Show 2; Fall Festival 2, 3;
 Junior High Softball 1; Intramurals
 3, 4; School of the Orange 1.





LARRY WOODS
Future Farmers of America 1, 2; C.
O.E. 3.

CAROLEYN THACKER
Girls' Glee Club 1; Messiah 1; Art
Club 3; Bible Club 4; Spanish Club
2; Intramurals 2; Hostess 2.



SHIRLEY SCHLIPP
Honor Society 2, 3, 4; Fall Festival
4; Future Teachers of America 3, 4;
Spanish Club 2; Library Staff 2, 3, 4;
Future Teachers of America Historian
4; American Legion Speech Contest 4.



RUTH ANN BOND
Mixed Chorus 1, 2; Girls' Glee Club
1, 2; C.O.E. 4; C.O.E. Club Sec-
retary 4; Pep Club 1, 2, 3; Basketball
Queen 4; Spanish Club 2; Freshman
Class Secretary 1; Junior Class Sec-
retary 3.

JANICE WYRICK
Fall Festival 4; Future Homemakers
of America 4; Pep Club 3; Wapato
High School, Washington 1, 2.



DELORES BOND
Future Homemakers of America 4; C.
O.E. 2, 3; Pep Club 2, 3; Maroon and
Gold Staff 2; Referee Staff 2.

BENNY THORSON
Future Farmers of America 1, 2, 3; C.
O.E. 4; C.O.E. Convention 4; E.
Club 4; Track 3.

JIM CRANE
C.O.E. 4; C.O.E. Convention 4;
Hayward High School, California 1,
2, 3.





MARITA DODGE
Washington High School 1,2,3.

ARGRETA GREEN
C.O.E. 4; Junior High Volleyball
1; Intramurals 1,2; Hostess 2.



BETH VERNON
Mixed Chorus 1,2,3,4; Girls' Glee
Club 1,2,3,4; Vocal Clinics 1,2,3,4;
Music Contests 1,2,3,4; Messiah 1;
Christmas Program 2,3,4; Oklahoma
3; Spring Show 1,2,4; Fall Festival
1,2,3,4; Science Club 3; Pep Club
1,2,3,4; One-Act Plays 2; Speech
Contests 2; Hostess 2; Monitor 4.



VIRGINIA RADCLIFF
Bible Club 4.

ELIZABETH BAQUET
Oklahoma 3; Spring Show 3; Art Club
3; Hostess 2.



DONNA JESTER
Mixed Chorus 1,2; Girls' Glee Club
1,2; Music Contests 2; Messiah 1;
Spring Show 1,2; Fall Festival 1,2,
4; Fall Festival Queen 4; Sophomore
Maid 2; Freshman Hostess 1; Pep Club
1,2,3; Student Council 2,3,4; Senior
High Volleyball 2; Junior High Soft-
ball 1; Intramurals 2.



SANDRA DAVIS
Girls' Glee Club 1; Band 1,2,3,4;
Pep Band 2,3,4; Music Contests 1,2,
3,4; Spring Show 2; Fall Festival 1,2;
Pep Club 1,2,3,4; Junior High Soft-
ball 1; Intramurals 4; Maroon and
Gold Staff 4; Referee Staff 4; Library
Staff 3,4.

CAROL BELLAMY
Bible Club 3,4; Senior High Volley-
ball 4; Junior High Volleyball 1; In-
tramurals 1; Hostess 2,3; Hostess Club
President 3.





HOWARD HINDON
Fall Festival 4; C.O.E. 3, 4; Arts
Club 4.



JERRY LILEY
Christmas Program 4; Fall Festival
4; E Club 4; Varsity Football 4; All-
Conference Football 4; Jefferson City
Senior High, Jefferson City 1, 2, 3.

NOT SHOWN: Barry Huskins
Walter Wood



JANICE JEFFRIES
Introsuks 4; Wyandotte High School
2, 3.

SECRETARY-TREASURER
LINDA SCHICK
PRESIDENT
J.C. HOWELL

VICE-PRESIDENT
MARY JO FARMER

THE THINKER



SPONSOR
CLIFFORD GREENWAY

SPONSOR
GERALDINE HALDEMAN

SPONSOR
MAX HUNTER



David, to one of the greatest joys of heaven. How bright David, what year without you! you to look on, remember David. How sad, now you with your dear
 my theme. Long lives in great proximity
 I have a great sense of humor & a. Shall to be with. Don't ever play
 all the laughs will be heard together!

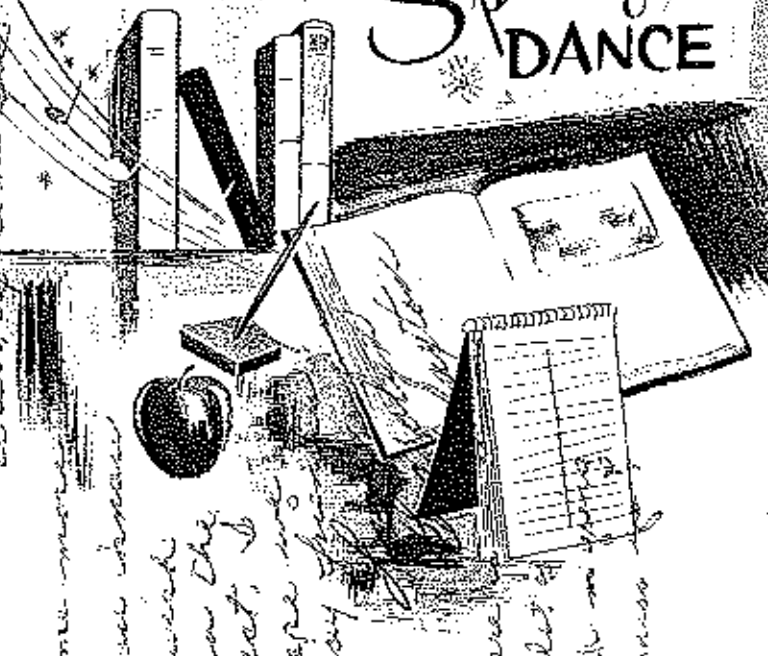
Boy will there be. In the things most you without you.
 Don't forget all the fun that will be with level's. I solemnly.
 Don't forget to be. As we speak of you. At that to be nice thing
 now. I can remember this winter you, you.

Shocked, would you the heart. Thought you would be, although
 as don't mind if you young. Got talked it to be. I don't know how to
 a this method will. I thought you would be. I don't know how to
 What, I remember this winter you, you.



Undergrads

Spring
DANCE



I've done
 I wish
 you the
 best, I
 hope no
 way the
 P.S.
 There
 a lot
 night in
 to read

Juniors

CHARLES CLARK, PRESIDENT
 JIM DANWIDDIE, VICE-PRESIDENT
 JUDY ALLEN, SECRETARY
 BARBARA APPERSON
 SUE BARBARICK



DON BASHORE
 DENNIS BEANLAND
 RONNIE BEARD
 MARILYN BOND
 BONNIE BOWLIN



ERNE BOYD
 BERT BRANSTETTER
 BOB BRANSTETTER
 BETTY BUCHANAN
 DAN BUNCH



EMMA CARPENTER
 PAT CARTNER
 SHARON CONNER
 KENNETH COX
 BRENT CRANE



ROBERTA CROUCH
 KAY DAVIES
 SHERRY DOWNS
 SUE GERHART
 DARLENE GOLDEN



KAREN GOODRICK
 RONNIE GRACY
 SHARON GREEN
 KIP GRONEMEIR
 ED GUMP





MARY LOU GUNN
LARRY HAGGERMAN
NANCY HALL
SHARON HIRSCHMAN
JOHN HOWSER



DARRELL HUNT
CAROLYN JACKSON
LINDA JAMES
CHARLES JOBE
JAMES JOBE



WAYNE JONES
CAROL KEHR
RONNIE KINGERY
SHARON MAHER
FAY MARTIN



MIKE MORGAN
BOB NEWTON
B. NICHOLS
EJANE NICHOLS
MARLEN OPIE



DOUGLAS FAIKHURST
ROBIN PATTERSON
DAVID PROCTER
HAROLD RADER
CAROL RAINS



FAT REYNOLDS
KENNY ROBB
LINDA ROBINETT
TERRY ROE
LEONITA ROGERS

STANLEY RUNYAN
AUDREY SCHULTE
DAN SCHULTE
MARILYN SCHMITZ
KATHERINE SCOTT



ED SCRIVNER
RUDY SEMMONS
TED SKILES
ROBERT SPARKS
DENNIS SPRATT



VICKIE STARK
DON TAYLOR
T. L. TAYLOR
JUANITA TWITCHEL
RUBY TIRPEN



DENNIS VANHOOSER
ROGER VANPOOL
DON VANN
HELEN VAUGHN
BEVERLY VOLKART



JANICE VERNON
PHYLLIS WALLIS
BILL WATKINS
PHYLLIS WATT
LEE WEST



TOM WIENEMAN
LARRY WILLIAMS
GEORGE WILSON
DWAYN WOOD
JAMES YAMBY



IN MEMORY OF ---

Roger Allen VanPool, 1960 Junior at Eldon High School, who was born on September 9, 1943 and who met his accidental death on February 19, 1960.



This Is Study Hall?

History Is Interesting????



VICE-PRESIDENT
JIM DINWIDDIE
SECRETARY-TREASURER
JUDY ALLEN
PRESIDENT
CHARLES CLARK



Ouch!!!!



BEWARE: Juniors At Work.



These Industrious Juniors!



Sophomores

BRUCE ELAYACEK, PRESIDENT
 PAM FLAUGHER, VICE-PRESIDENT
 DONNA HOSKINS, SECRETARY
 VERNICE ANDRESS
 PENNY BAILEY



CAROLYN BARKER
 CIARNELL BARNHART
 RICHARD BAUGHMAN
 CORRINE BELLAMY
 ROSE BERKSTRESSER



VIRGINIA BEYEU
 J. W. BLANKENSHIP
 WYETH BOND
 LARRY BOWDEN
 JUDY BOWLIN



HAZEL BRANSTETTER
 BEVERLY BROWN
 BARBARA CALHOON
 BOB CAMPBELL
 JANET CLARK



CAROLYN CLAXTON
 JOHNNY CLAYTON
 JANICE CONNOR
 ELLEN COOPER
 HELEN COOPER



KENNETH CORNETT
 SHARON DAWSON
 WANDA DeROSSETT
 JOYCE DOOLEY
 JOANN DUNSTAN





MIKE DUTCHER
 RICHARD EGGSON
 SHIRLEY FLAUCHER
 JUDY FORD
 BOB CATTERMEIR



BETTY GREEN
 RAYMOND HADER
 JEMME HAYNES
 FRANCES HEES
 JIM HEES



BARBARA HICKS
 LUTHER HICKS
 PAUL HOLDER
 JUDY HOLT
 JIM MILLER



RALPH MILLER
 JEANETTE JEFFERIES
 JOE JEFFERIES
 LUCILLE JENKINS
 RONNIE JESSE



JUDY JOBE
 BEVERLY JONES
 BILL KELLY
 KATHY KNOCH
 DALE LEFFERT



EVELYN LUFFARDUS
 MIKE MULCAHY
 MARY NEWTON
 MARGARET NOWACK
 SHIRLEY PACE

ROGER PURL
ROSE MARIE RICE
MARGARET RIEFFLE
JIM RINEHART
CAROLYN ROARK



CAROLYN ROEDEL
JOE ROWLAND
CHARLES SHOEMAKER
KELLEY SHOEMAKER
MARY ANN SCHULER



HELEN SCHUPP
SHARON SCHUPP
PHYLLIS SCOTT
MYRON SCOTT
EDWENA SIOCK



NANCY SIDEBOTTOM
GERRY SMITH
LESTER STEVENS
JOYCE TEAL
CURTIS TELLMAN



JOHN THORSON
SAM UPTON
MARILYN VANN
LINDA VAUGHN
CHARLES VERNON



FRANCIS VERNON
KATHY WILSON
PAUL ZHAMB



NOT SHOWN: BILLY KOEBEL



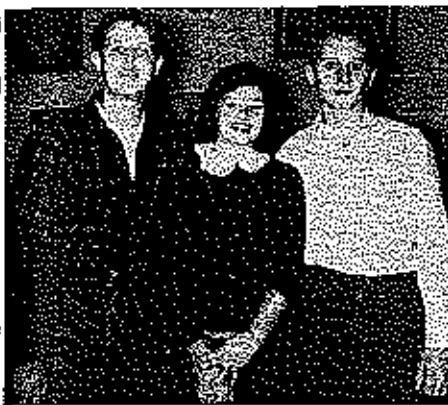
Sophomore Class Officers



A Winner in The Making!



Clear the Halls!



Freshman Class Officers



Bundle of Work



Studious, Aren't They?



Freshmen

JOHN STARK, PRESIDENT
 BILL LONGINO, VICE-PRESIDENT
 SANDY GAMPHOR, SECRETARY
 LEROY AJART
 JOE ALBERTSON

JIM ALBERTSON
 BONNIE ALPERS
 GORDON APPERSON
 BILL BADLEY
 JIM BLANKENSHIP

BONNIE BOATMAN
 DANNY BOND
 MARGARET BOWDEN
 MARGARET BRANSTETTER
 NELLIE BRANSTETTER



DOUG BUNCH
 BILL BROWN
 RONALD BUIRIS
 LUTHER CAMPBELL
 TOMMY CANTWELL



GENE COOPER
 GLEN COFFMAN
 BURMA COTTEN
 THOMAS COTTEN
 DAVID CRANE



BILL CRIGLER
 DELL CROCKET
 LARRY CROUCH
 BARBARA CROWDER
 MYRNA CRUM



SHARON CRUM
 ARLENE CURRENCE
 NANCY DANE
 BILLIE DAVENPORT
 CAROL DAYTON



DONNA DYER
 PERL DUTCHER
 BARBARA EDELMAN
 BETTIE GARTIN
 CONNIE GRACY





SALLY GROTH
CLEORA HARRISON
LOIS HARMON
SHARON HENDERSON
JERRY MENLEY



DONNA HEGG
MARTHA HOUSTON
MARY HOUSTON
JANE HOWSER
MORRIS HUNT



MARY HURTBISE
MORRIS JARRETS
JIM JEFFERIES
PEGGY JEFFERIES
KATHERINE KEITHLEY



DON KIDWELL
KENT MAIER
SHARON MARRIOTT
DONNA MCKINLEY
GORDON NICKELS



BILL NOWACK
GEORGE PARKINS
CONNIE PATTERSON
MARY PETIT
PEGGY POLLY



DIANNA PORTER
EDWARD POWELL
LINDA RAINS
MILDRED RAINS
JANE RANUM

DON RICHARDSON
 RON RICHARDSON
 JIM SANNING
 LARRY SCRIVNER
 JEAN SHAW

1



JUDY SHEPHERD
 MIKE SHEPHERD
 GLEN SHOEMAKER
 HERBERT SIDEBOTTOM
 BOB SIDEBOTTOM



SUE THOMSON
 NAZEL TRYON
 ROSIE TWITCHEL
 PAUL VAUGHAN
 DONNA VERNON



JEFF WAIVE
 CONNIE WALLIS
 BOB WALTERSHEIDE
 ANNE WHITNEY
 WALTER WHITTLE



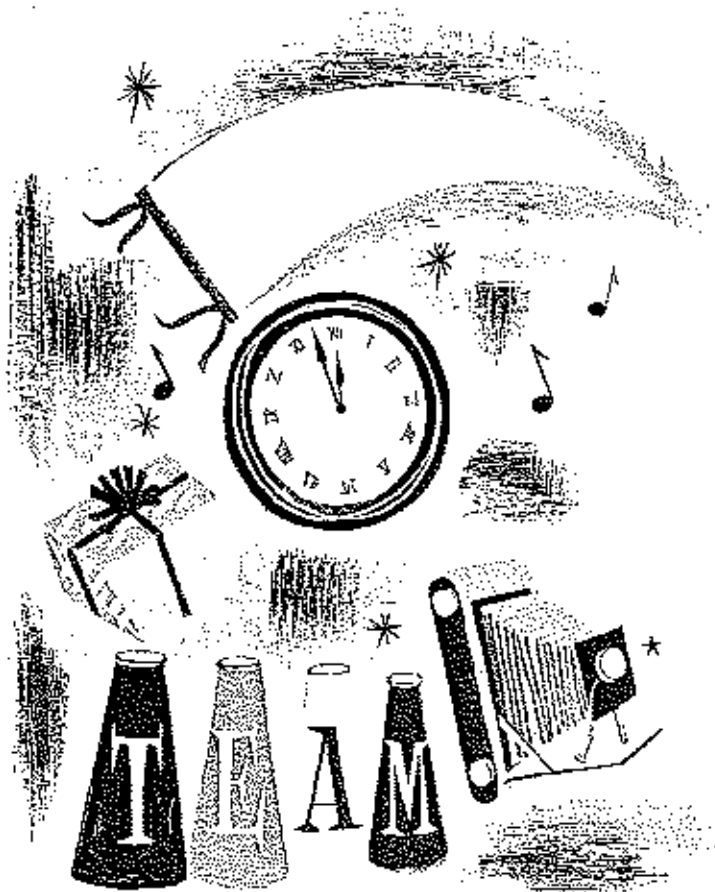
CAROL WILSON
 LOLA WILSON
 LOREN WINTERS
 HOWARD WOLFE
 KEN WOOD



BARLENE WORKMAN
 LILLIAN ZIMMER



NOT SHOWN: JEANITA LAKE
 RONALD LEUTHER



Activities





JACKIE CRANE
REFERET EDITOR
MAROON AND GOLD ASSISTANT EDITOR



PAT CLAXTON
REFERET ASSISTANT EDITOR



JOYCE TAYLOR
REFERET ASSISTANT EDITOR



Publications Class

FIRST ROW: Dorise Allen, Sandra Davis, Bonnie Gloschen, Billie Sue Hinds, Pat Gartner, Jackie Crane, Sharon Ekstrom, Mrs. Sarah Brackman, Sponsor. SECOND ROW: Barbara Imles, Joyce Taylor, Barbara Weeks, Sue Hicks, Leotta Jackson, Pat Claxton, Anita Cochran.

LEOTTA JACKSON
MAROON AND GOLD EDITOR

SARAH BROCKMAN
SPONSOR

BONNIE GLOSHEN
MAROON AND GOLD, REFERET
ART EDITOR





Student Council

FIRST ROW: Mary Jo Farmer, Sue Gerhart, George McDaniel, Pat Claxton. SECOND ROW: Bruce Hlavecek, J.C. Howell, Sharon Ekstrom, Janet Clark, Edwona Shack, Mezy Kay Pahlit, Tam Lovisig, Jerry Hopley. THIRD ROW: Charles Clark, John Stark, Lee West, Roger VanPool, Dwala Wood, David Crane, Bill Nawack, Dan Richardson.

PRESIDENT
GEORGE McDANIEL



VICE-PRESIDENT
MARY JO FARMER



SECRETARY
PAT CLAXTON



TREASURER
SUE GERHART



Honor Society Members of 1958-'59

FIRST ROW: Carolyn Jackson, Vicki Stark, Marilyn Schatz, Janice Vetrion. SECOND ROW: Betty Ellerts, Ruth Howser, Norma Cox, Babesta Harvey, Carolyn Sheffhart, Pat Claxton. THIRD ROW: Doris Graham, Rebecca Boan, Paula Jobe, Dean Dinwiddie, Sherry Houston, Sharon Ekstam, Leatha Jackson, Shirley Schupp, Sue Kimball, Barbara Imier, Linda Schick, Joyce Taylor, Donna Allen. FOURTH ROW: Jean Lowrey, Barbara Sanning, Don Upton, Don Shepherd, Bill Bear, Bill Phillips, Ross Kidwell, Larry Ford, Raymond Band, Jaz White, John Howser, Gene Hoynes.



VICE-PRESIDENT
JOYCE TAYLOR

First



PRESIDENT
SHARON EKSTAM

Semester



SECRETARY-TREASURER
PAULA JOBE



VICE-PRESIDENT
BETTY ELLERTS

Second



PRESIDENT
JOHN HOWSER

Semester



SECRETARY-TREASURER
SHERRY HOUSTON



National Honor Society

FIRST ROW: Loretta Jackson, Sue Kinkaid, Sharon Manning, Pat Claxton, Barbara Siler, Sharon Elstau, Donna Allen, Linda Schick, Betty Effertz, Paula Jake, Sherry-Houston. SECOND ROW: Mrs. Ruth Lupardus, Spassar, Carolyn Jackson, Barbara Appesou, Moxilyn Bond, Janice Verman, Vicki Strik, Sue Gerhart, Marilyn Schmittz. THIRD ROW: Charles Clesk, Dwain Wood, John Howser, Raymond Boaz, Gena Haynes, Larry Ford.

The Meeting Will Now Come To Order.



What A Mess!



Have A Piece Of Rabbit Gum?



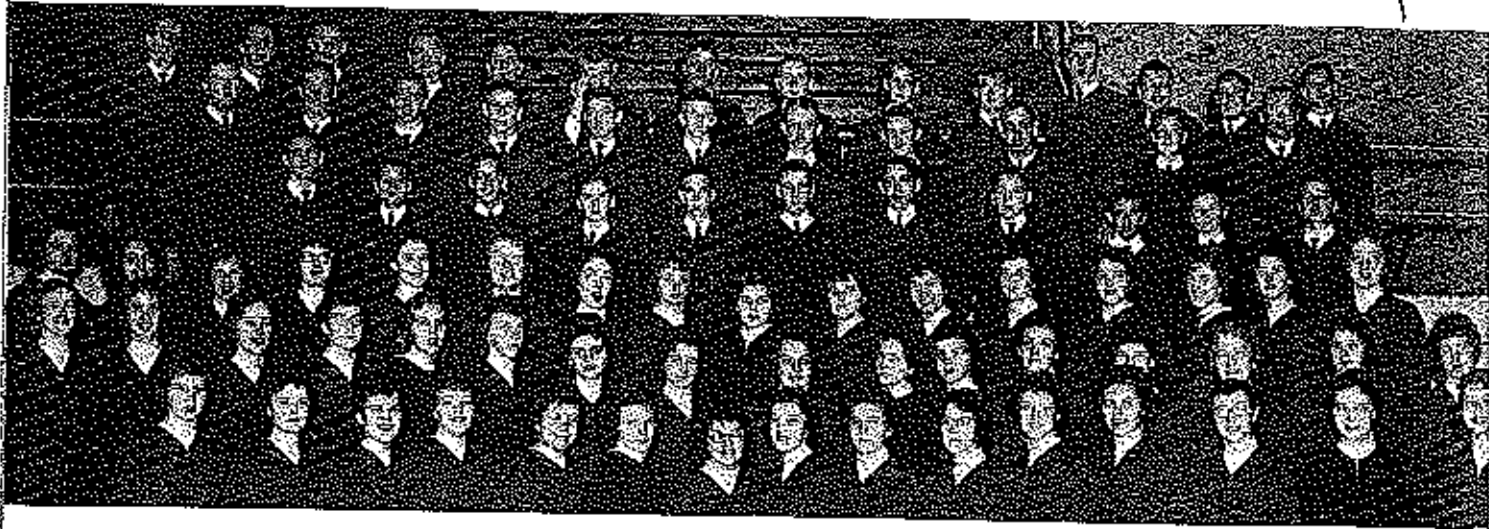
Honor Society Is A Serious Matter.





Boys' Glee Club

FIRST ROW: J. C. Howell, John Hansen, Bruce Hlavacek, Bill Berkstrasser, Jim Sanning, Bill Evans, Jeff Waite, Bill Crigler, James Long, Donny Schulte, Jerry Vernon, Larry Rice. SECOND ROW: David Pace, Sam Upton, Brent Crane, Kenny Robb, Donny Bunch, Rennie Jesse, Richard Busch, Howard Milburn, Dennis Wood, Larry Bond, Bill Cooley, Ron Richardson, Gary Small. THIRD ROW: Norman Bashore, Suddy Simmons, Myron Scott, Gary Potzmann, Raymond Bond, Larry Ford, Don Richardson, Bill Langino, Larry McGill, Charles Clark, George McDaniell, Tom Wiseman, Dennis VanHooser, Ted Skiles, Bill Nowack.



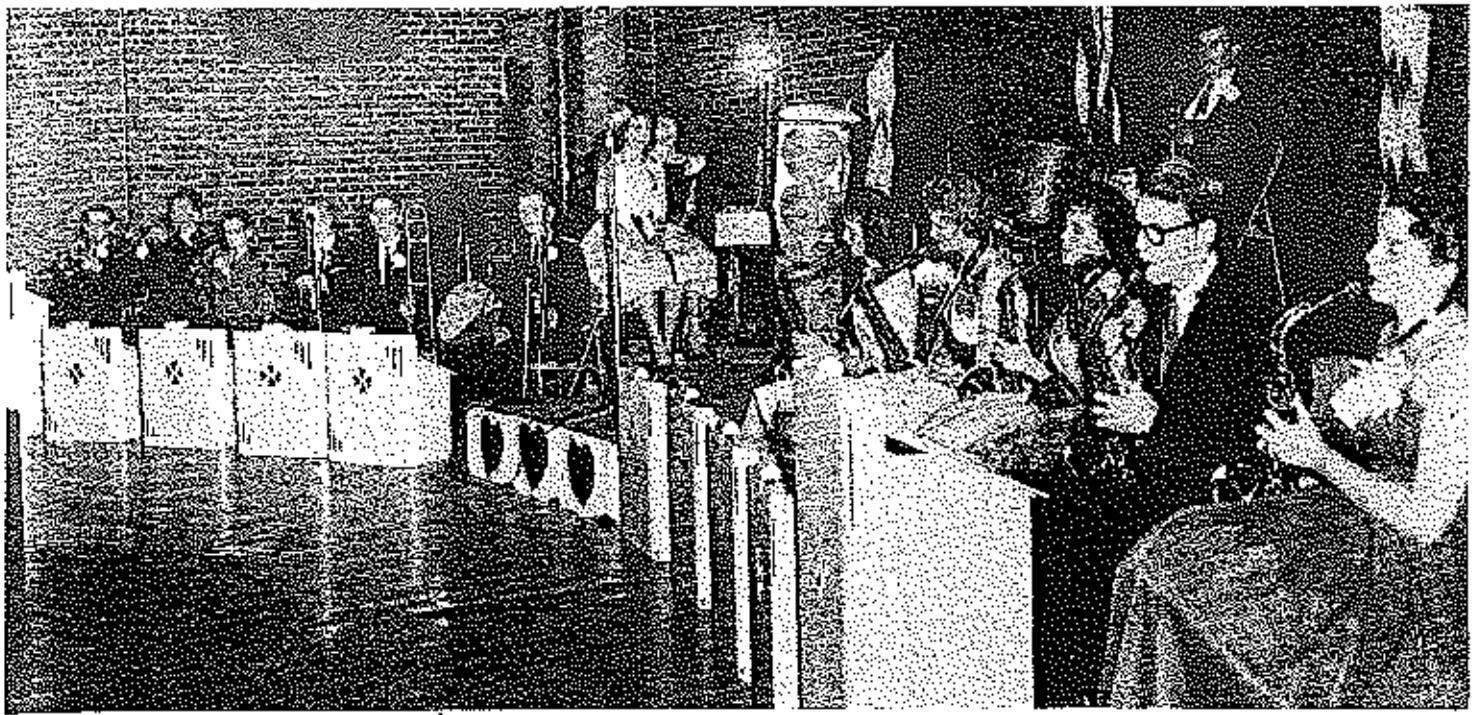
Mixed Chorus

FIRST ROW: Kathy Knoch, Beth Vernon, Carolyn Claxton, Penny Bailey, Virginia Bilyeu, Donna Hegg, Pam Flaughner, Corinne Bellamy, Evelyn Luperdus, Betty Effertz, Vicki Stark, Sharon Dawson, Sharon Ekstrom, Linda Rains, Katherine Keithley. SECOND ROW: Carolyn Jackson, Sally Grath, Sharon Hirschman, Edwena Shock, Bonnie Alps, Donna Dyer, Nancy Hall, Pat Corlner, Donna Allen, Sharon Crum, Janet Clark, Jackie Cruise, Judy Ford, Shisley Flaughner, Marilyn Bond, Lois Harmon. THIRD ROW: Rose Berkstrasser, Mary Jo Fenner, Donna Vernon, Carolyn Roedel, Linda Schick, Barbara Imler, Rose Marie Rice, Frances Hoes, Barbara Crowder, Billie Sue Hinds, Janice Vernon, Leotta Jackson, Kay Davies, Margaret Nowack, Linda Eiken, Betty Buchanan. FOURTH ROW: Bruce Hlavacek, Ron Richardson, Bill Evans, Jeff Waite, Bill Crigler, Frank George, Larry McGill, Dennis Wood, Donny Schulte, Jerry Vernon, Larry Rice. FIFTH ROW: Raymond Bond, David Pace, Brent Crane, Kenny Robb, Don Bunch, Ronnie Jesse, Richard Bunch, Howard Milburn, Larry Bond, Bill Cooley, J. C. Howell. SIXTH ROW: Norman Bashore, Suddy Simmons, Myron Scott, Gary Potzmann, Sam Upton, Larry Ford, Don Richardson, Bill Langino, Charles Clark, Tom Wiseman, George McDaniell, Ted Skiles, Dennis Van Hooser, Bill Nowack.

Girls' Glee Club

FIRST ROW: Beth Vernon, Carolyn Claxton, Penny Bailey, Virginia Bilyeu, Nancy Hall, Pam Flaughner, Corinne Bellamy, Evelyn Luperdus, Vickie Stark, Sharon Ekstrom, Sharon Dawson, Linda Rains, Katherine Keithley. SECOND ROW: Sally Grath, Sharon Hirschman, Edwena Shock, Bonnie Alps, Kathy Knoch, Donna Dyer, Donna Hegg, Donna Allen, Sharon Crum, Janet Clark, Judy Ford, Shisley Flaughner, Marilyn Bond, Lois Harmon, Betty Buchanan. THIRD ROW: Carolyn Jackson, Rose Berkstrasser, Mary Jo Fenner, Donna Vernon, Carolyn Roedel, Linda Schick, Barbara Imler, Rose Marie Rice, Frances Hoes, Margaret Riffe, Barbara Crowder, Billie Hinds, Janice Vernon, Leotta Jackson, Kay Davies, Margaret Nowack, Linda Eiken.



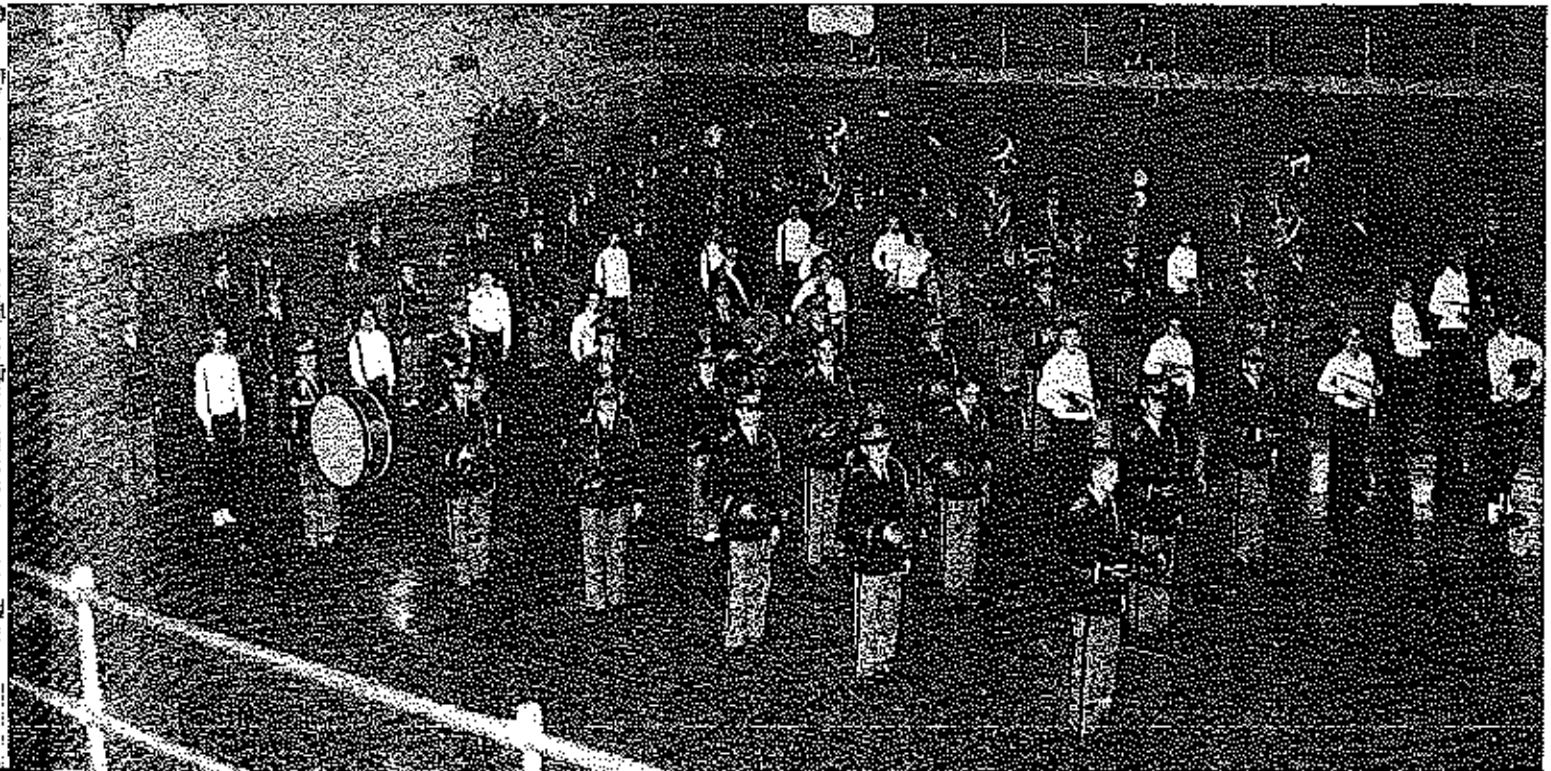


Sparkletones

FIRST ROW: Dan Bunch, Sreni Cruise, Bill Crigler, Charles Clark, Sam Upton, Richard Buncis, Katherine Kettley, Margaret Nowack, Elono Opie, Norman Bashore, Key Davies. SECOND ROW: Evelyn Logardus, Betty Elliotts, Tom Wiceman.

Band

FIRST ROW: Margaret Nowack, Majorette. SECOND ROW: Charles Clark, Richard Bunch, Larry McGill, Wally Groth, Gary Dawson, Charles Clark, Sam Upton. THIRD ROW: Howard Millburn, Bill Evans, Lacey Crigler, Wayne Hlavacek, Bill Crigler, Jeff Waite, Don Richardson. FOURTH ROW: Gaary Bunch, Bill Brown, Ron Richardson, George Parkus, Bill Longino, Dannie Howson, Brent Crane, Doug Bunch. FIFTH ROW: Sharon Ekston, Marsha Jones, Mary Wood, Kathy Wilson, Billie Hilde, Connie Gracy. SIXTH ROW: Diana Opie, Barbara Simmons, Key Davies, Joyce Fischer, Genevieve Clawson, Arlene Currence, Katherine Kettley. SEVENTH ROW: Sherry Davis, Tom Wiceman, Christie Howses, JoAnn Dunston, Julieen Crane, Dennis Boyd, Sharon Crum, Ted Skiles. EIGHTH ROW: Lavena Lewis, Debbie Imier, Marilee Rohis, Juacia McDaniel, Bennie Duffield, Meta Marie Hoeneker, Ella Dee Bunis. NINTH ROW: Lucille Jenkins, Joyce Dooley, Carolyn Claxton, Edwena Shack, Kathy Shelton, Nancy Dane, Sandra Davis, Raymond Bond. TENTH ROW: Sully Groth, Anne Whittey, Janet Clark, Jessica Vernon, Evelyn Logardus, Mary Jo Farmer, and Norman Baslarie. ELEVENTH ROW: Leoito Jackson, Sue Barbarick, Sandy Miles, Carol Dwyton.





Future Homemakers of America

FIRST ROW: Beverly Volkov, Frances Heas, Paula Jobe, Sherry Houston, Vicki Stark, Mildred Rolns. SECOND ROW: Dolores Band, Jan Wyrick, Pat Carter, Sherry Downs, Janice Vaman, Judy Jobe, Sharon Dawson, Rose Berkstrosser, Linda Robinson, Roberta Crauch, Marilyn Schmitz. THIRD ROW: Mrs. Mary Vernon, Sponsor, Jean Illaka, Joyce Seal, Fay Martin, Juanita Leke, Rosie Twitchel, Connie Gracy, Betty Griffin, Carol Bains.



First Snow of the Winter.



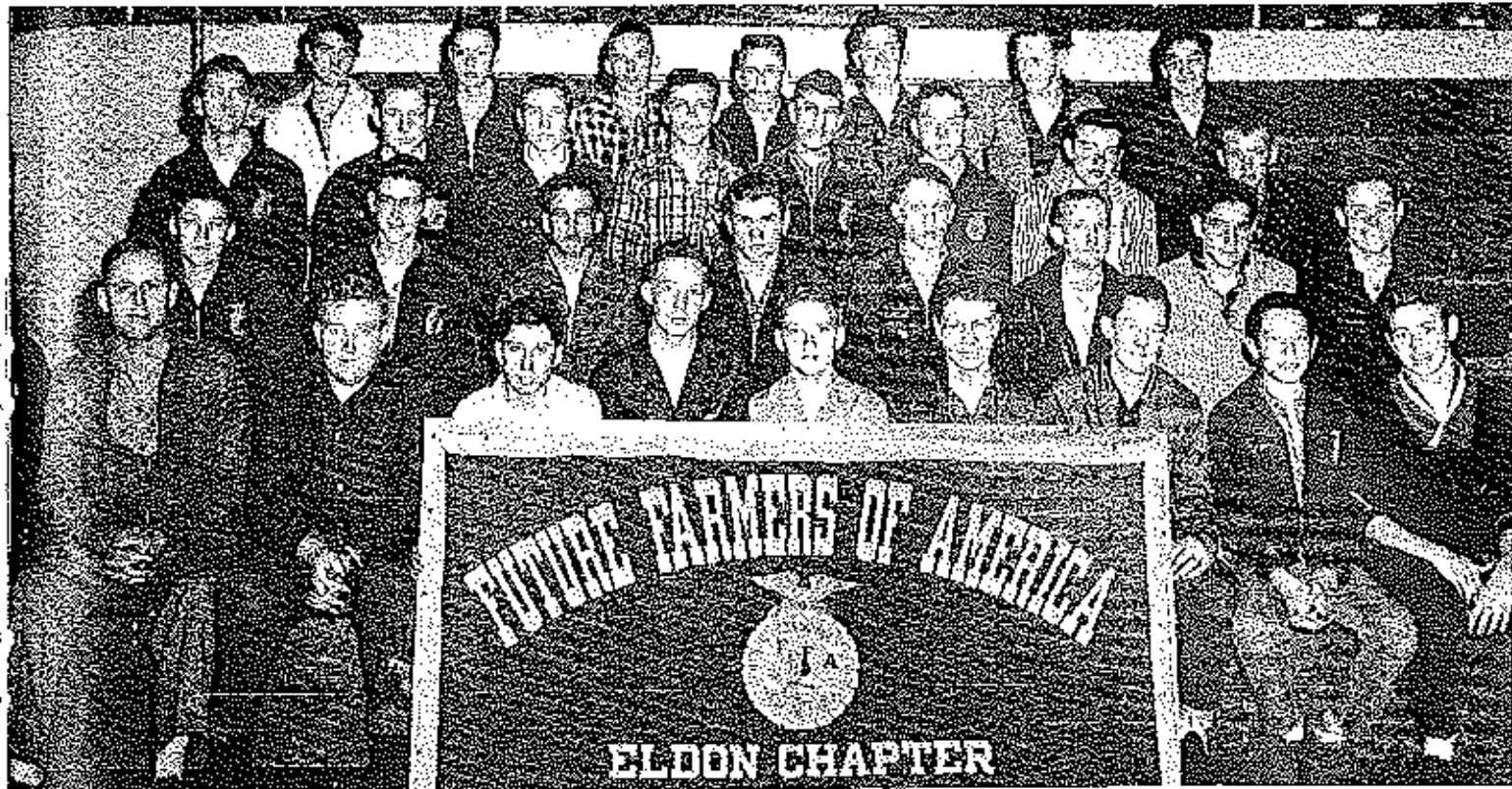
Relaxing At F.H.A.



The Business At Hand.



F.H.A. Songbirds.

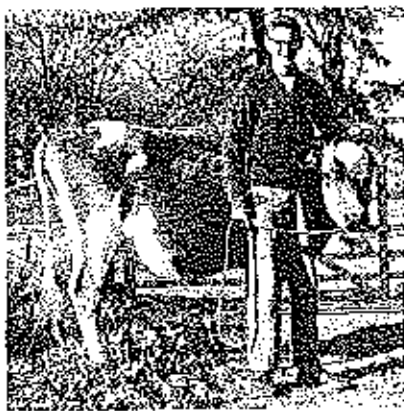


Future Farmers of America

FIRST ROW: Mr. Clifford Greenway, Sponsor, Jim Rhebert, Thomas Colten, Glen Coffman, Raymond Maher, Rossald Leuther, Gordon Nickels, Gene Cooper, Paul Vaughan. SECOND ROW: Wyatt Burk, Charles Jobe, Martin Opie, Gerry Smith, Jimmy Haynes, Buddy Taylor, J. W. Blankenship, Ine Rowland. THIRD ROW: Jerry Lottie, Robert Sparks, David Praxter, Bill Korbef, Gene Haynes, Bill Berkstreser, Bill Watkins, Durrell Hunt. FOURTH ROW: Richard Eidsen, Kenneth Cox, Don Taylor, Ronnie Cray, Walter Ward, Lury Williams, Bob Campbell.



EDWARD COFFMAN—Elongshire Gilt.



CHARLES JOBE—Guernsey Cow and Gate Built in Ag Shop.



BOB CAMPBELL—Holstein Heifer.



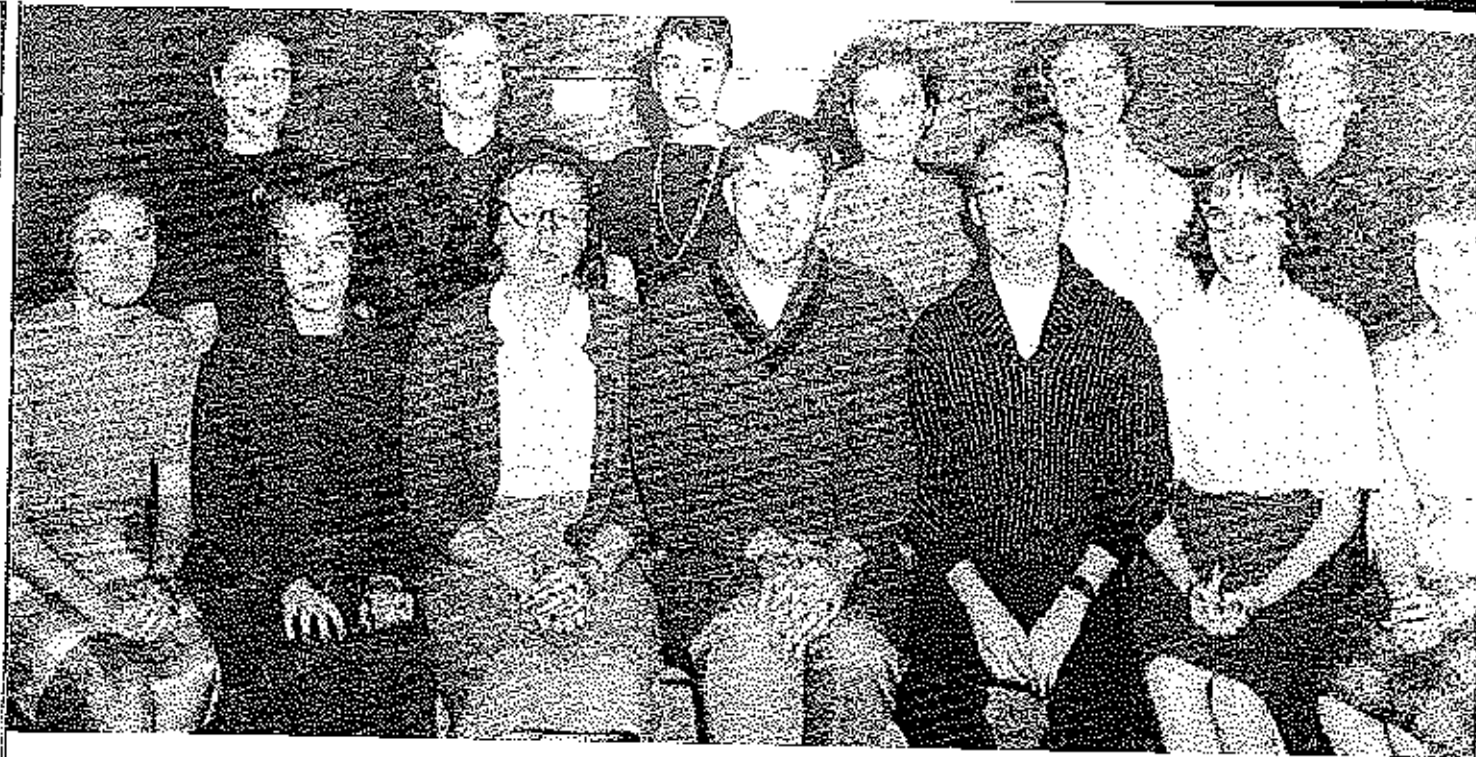
JOE ROWLAND—Jazzy Heifer Calf.



ROBERT SPARKS—Calf from Angus Cow.



BILL BERKSTRESSER—Angus Calf.



Future Teachers of America

FIRST ROW: Sue Wicks, Donna Allen, Barbara Miller, Raymond Bond, John Howser, Lucille Jenkins, Sharon Manning. SECOND ROW: Linda Schick, Carolyn Jackson, Sue Burdick, Sharon Maher, Kores Goodrick, Mrs. Ruth Lupardus, Sponsor.

PRESIDENT
RAYMOND BOND



SECRETARY
LUCILLE JENKINS



TREASURER
BARBARA MILLER



VICE-PRESIDENT
JOHN HOWSER



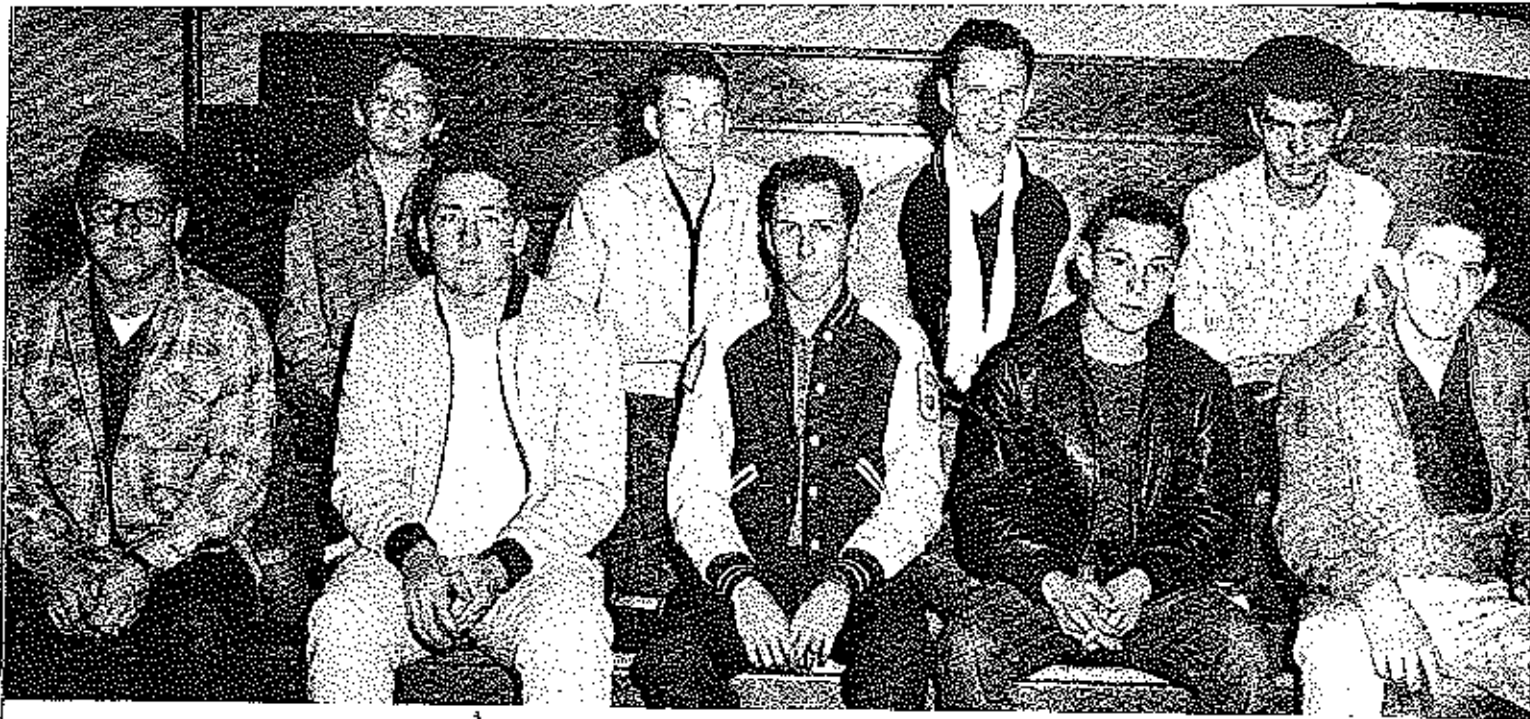
Co-operative Occupational Education Club

FIRST ROW: Brenda Coffman, Geraldine Neal, Winona Aho, Jack Apperson, Sharon Manning, Linda Jarrett, Ruth Ann Bond. SECOND ROW: Pat Throsser, Linda Filson, Stessley Ople, Dan Boshore, Pat Reynolds, Gole Denton, Dalores Bond. THIRD ROW: Wanda Williams, Arnette Green, Lissy Hougerson, Dennis Sperry, Mike Morgan, Dan Spilfer. FOURTH ROW: Mr. Virgil Jussenmeyer, Spenser, Benny Thorsen, Jim Cross, Jim Underwood.

Library Club

FIRST ROW: Frances Meas, Judy Jobe, Sue Klohoff, Linda Schick, Karen Goodrick, Duane Allen, Sondra Davis, Mrs. Ruth Lygaardus, LITERATION. SECOND ROW: Dale Laffert, Rose Beckstromer, Mary Ann Schuler, John Howser, Raymond Bond, Sharon Ekstrom, Sharon Schupp, Mary Kay Ferit.





Auto Club

FIRST ROW: Howard Hibdon, Ronco Sparks, Kip Granemeir, Ed Crown, Jim John. SECOND ROW: Phil Dutcher, Larry Bowden, Ed Gump, Jim Crane.

Science Club

FIRST ROW: Gary Potzmann, Ed Scrivner, Mary Jo Farmer, Mary Ann Schuler, Beverly Brown, Carolyn Thomson, Judy Shepherd, Judy Hilt, Donna McKinley, Cathy Wilson, Pats Flaugier, Edwena Schock, JoAnn Durston. SECOND ROW: Sharon Morrisot, Charless Barnhart, Carol Kels, Judy Ford, Margaret Bowden, Anne Whitney, Corale Patterson, Sandy Conahor, Shirley Flaugier, Nancy Hall, Jean Shaw, Darlene Workman, Jane Rasmus. THIRD ROW: Donna Hagg, Peggy Polly, Peggy Jefferies, Sharon Crum, Luther Campbell, Doris Bond, James Yancy, Bob Gatteneis, Dennis VanHanser, Kenny Robb, Duane Nichols, Gordon Apperson, Joyce Dooley.





Audio-Visual Education Club

FIRST ROW: Mr. John Dewitz, Sponsor, Charles Bond, Robert Jenkins, Gladys Oldwiddie, Mary Lou Gunn. SECOND ROW: Tommy Loving, Ronnie Kingery, Doug Beach, Edward Powell, Audrey Schulte, Sue Kimball, Helen Vaughn. THIRD ROW: Don Beach, Joe Jefferies, Howard Wolfe, John Stark, Don Kirkwell, Tom Wineman, Sharrn Illslevous, Gary Potzman, Linda Jones.

Bible Club

FIRST ROW: Mrs. Alice Vernon, Sponsor, Sharon Robinson, Coriyn Thacker, Mary Peit, Coral Dutton, Sharon Ekston, Kathleen Keithley, Junnie Twitchei. SECOND ROW: Hazel Branstetter, Rachara Gothard, Marilyn Bond, Ceneria Saffery, Betty Buchanan, Virginia Blyeu, Elise Cooper, Danna Vernon, Sully Grotli. THIRD ROW: Rosale Beard, Carol Balfour, Merilyn Voss, Bonnie Bowlin, Sharrn Canner, LeEtta Rogers, Phyllis Wahi, Roger Purd, Paul Zimmer. FOURTH ROW: Charles Vernon, Judy Bowlin, Helen Schlupp, Arlene Curranco, Ted Skiles, Bill Reynolds, Robert Sidabatom, Lillian Zimmer. FIFTH ROW: Sam Upton, Nancy Dore, Myra Gunn, Mary Houston, Marilee Hueston, Carrie Wolfis, Nancy Sidabatom, Sharon Schupp.





Thespian

FIRST ROW: Raymond Bond, Billie Sue Hindz, Georga McDaniel, Lotta Jackson, Sue Barbarick, Lory Ford, Miss Martha Spinks, Sponsor. SECOND ROW: Tom Winomait, Lida Schick, Arest Crane.

Cast of "True Blue and Enraged."



the Villainess Strikes Again!

"How Will We Pay the Mortgage?"



"I Now Pronounce You Man and Wife."

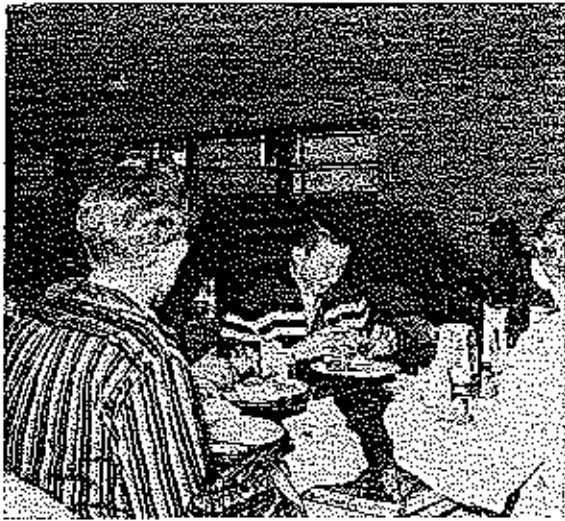




Cafeteria Workers

FIRST ROW: Fay Martin, Judy Bowlin, Helen Schupp, Bonnie Boatman, Roger Paul. SECOND ROW: Ellen Cooper, Mary Pett, Shores Schupp, Clonra Harbison. THIRD ROW: Dale Laffert.

That Luscious Food!!



Tickets, Please!!!



Got A Penny??



At Your Service.





*Student Council President
George McDaniel*



George McDaniel





Queen of Hearts
Linda Schick

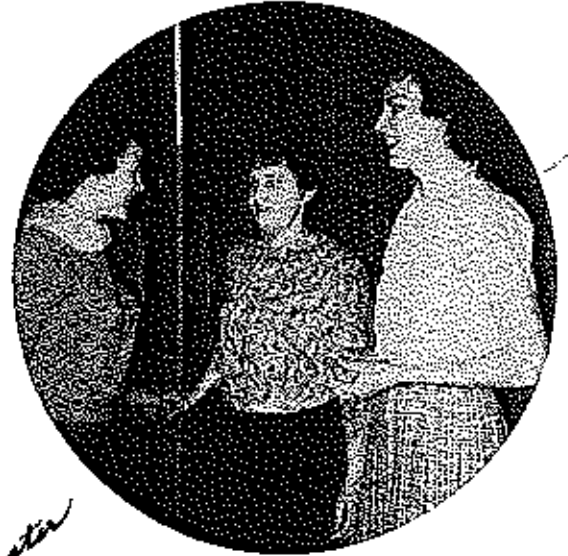
Prince George McDaniel - Princess Jackie Crane



King of Hearts
J. C. Howell

Princess Loretta Jackson - Prince David Pace





Queen of Popularity and Beauty
Donna Jester

Ruth Greenway

John Gambil

Nancy Hootey



Peggy Harrison

Terry Fischer

Rhonda Hickey





*Basketball Queen
Ruth Bond*

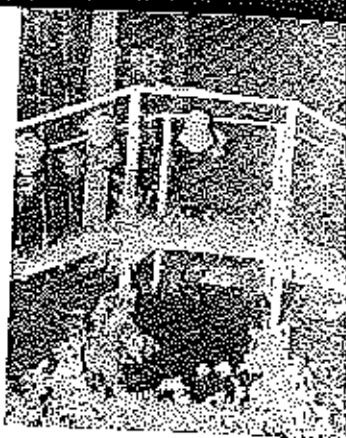




Cross Over the Bridge!



It Is Rather Sleepy!



Water Under the Bridge.



Paper's Coming Out Friday!



Publications Class.



This Is A Class?



I've Got It!



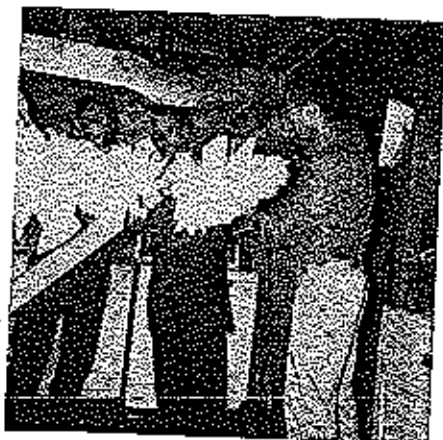
Say Cheers!



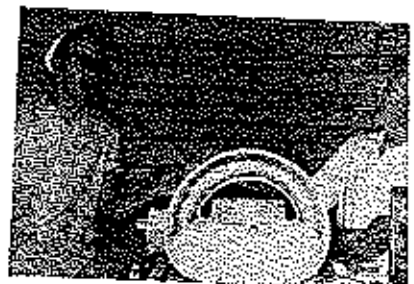
House of Bamboo?



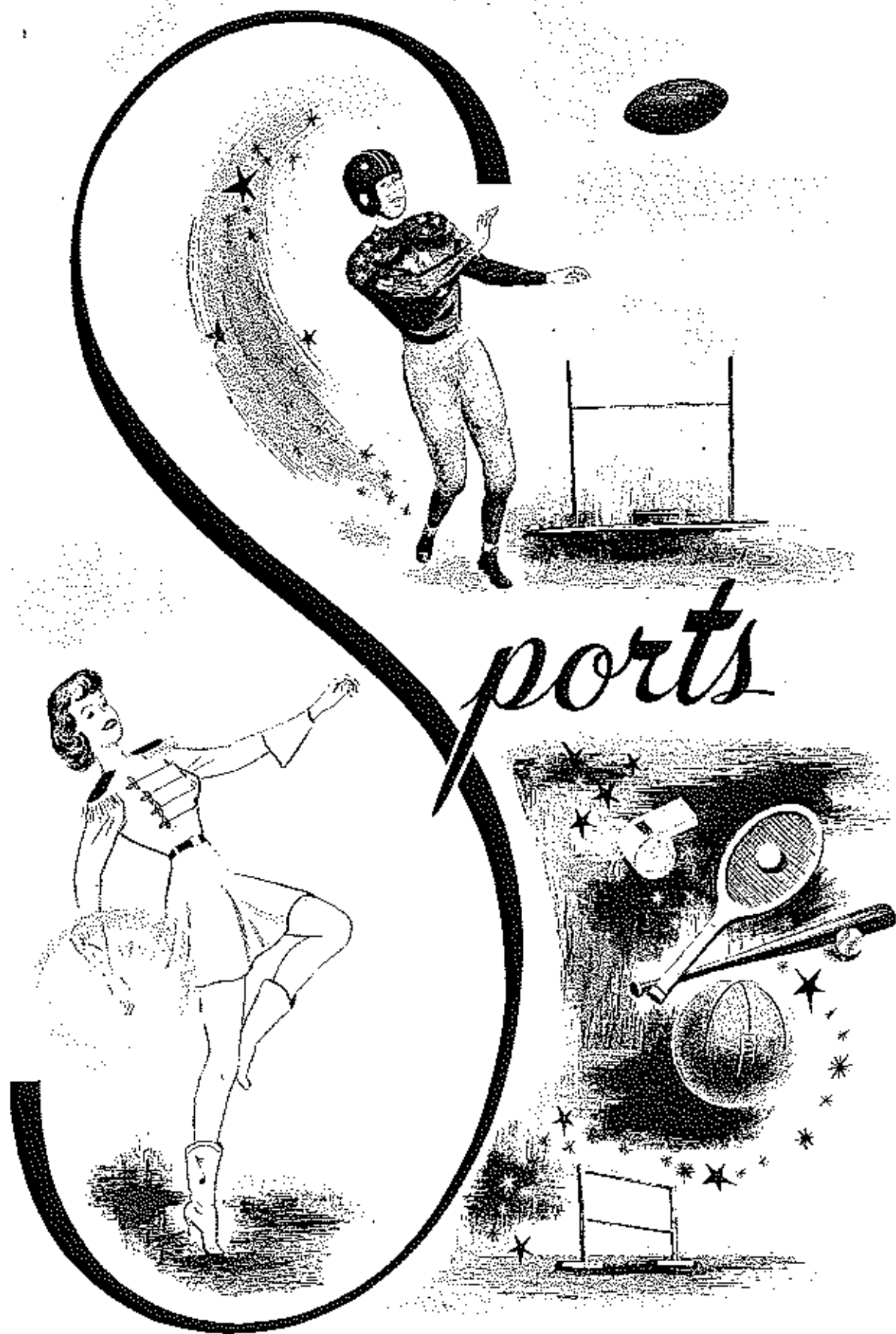
First Place Float!



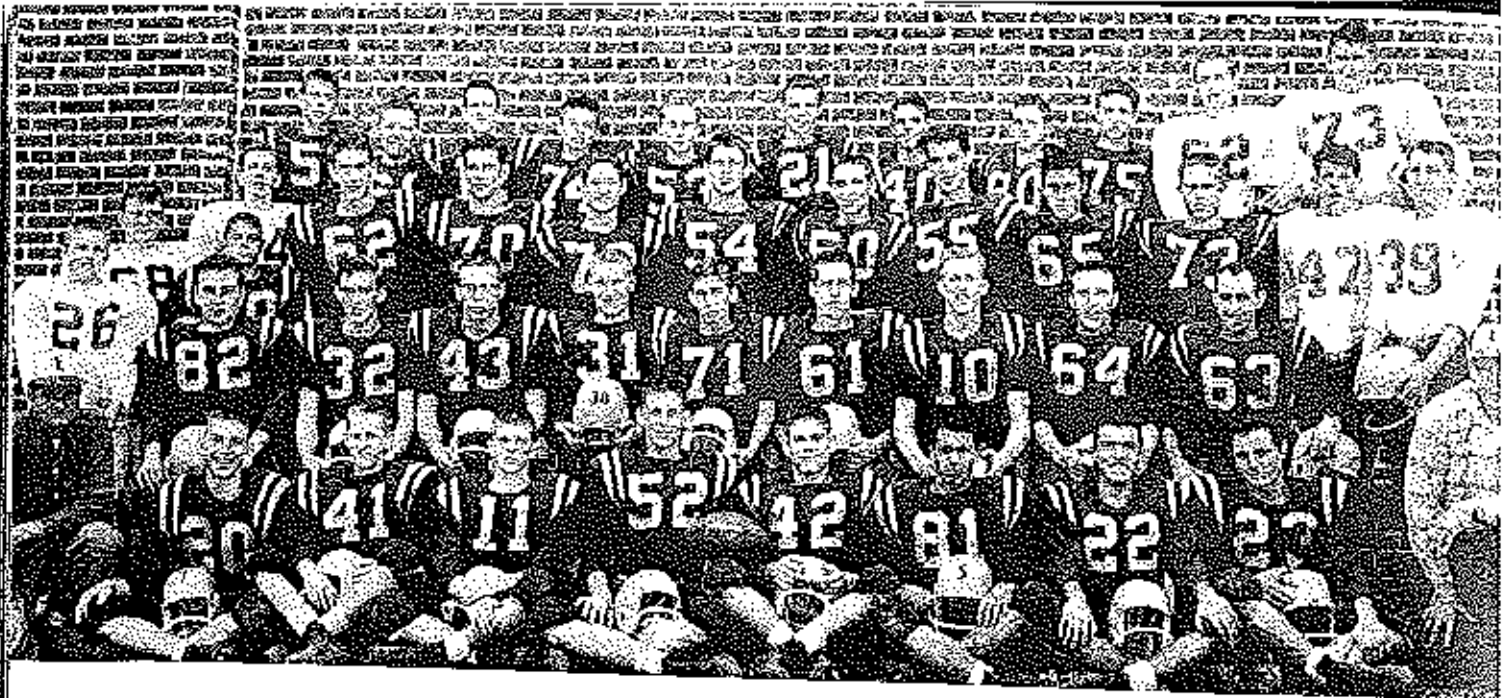
Stuff That Bird!



Recognize That Fourth?



ports

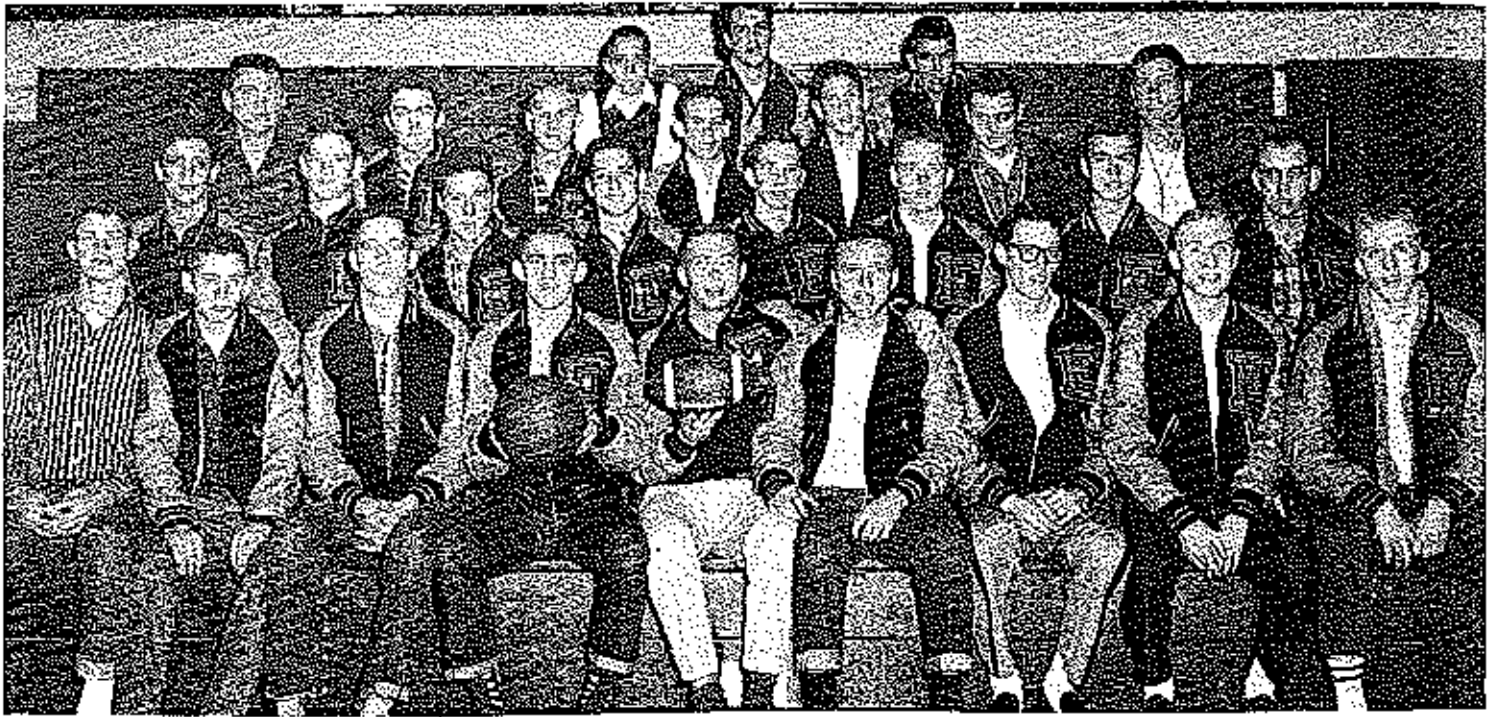


Football Squad

FIRST ROW: Coach Harold Weir, Kenny Hobbs, Charles Clark, Ramie Jesse, Myran Scott, Bruce Hlavacek, Mike Mulcahy, Ernie Boyd, Bob Brandstetter, Coach Ed Hodges.
 SECOND ROW: Gordon Apperson, Barry Hoskins, Charles Hayes, J. C. Howell, Larry Ford, Charles Burt, David Pace, George McDaniel, Mike Craig, Larry Band.
 THIRD ROW: Tom Wiannous, Ronald Richardson, Brent Crane, Len West, Don Vann, Roger VanPaai, Jerry Lilley, Orwin Wood, Buddy Simmons, Jim Dimwiddie, Robin Patterson, Dennis Beantland, Sam Upton.
 FOURTH ROW: Donald Richardson, Howard Wolfe, Bill Nawock, Paul Vaughn, Bill Longino, Jerry Henley, Billy Bob Walterschide, David Crane, Bill Bodley, Robert Sidebottom, Douglas Bunch.

Eldon High School Football Schedule 1959-60

Sept. 18	Eldon at Osage
Sept. 25	Candanton at Eldon
Oct. 2	Eldon at Tipton
Oct. 16	Eldon at California
Oct. 23	Osage at Eldon
Oct. 30	Versailles at Eldon
Nov. 6	Osage at Eldon



"E" Club

FIRST ROW: Jerry Lilley, Charles Bord, David Pace, Charles Hayes, J. C. Howell, Mike Grog, Norman Boshorn, Lassy Ford, George McDaniel. SECOND ROW: Don Vann, Roger VanPool, Jim Dinwiddie, Devin Wood, Brent Crane, Robin Patterson, Ernie Boyd, Larry Bond. THIRD ROW: Coach Ed Hodges, B. Nichols, Don Schwabe, Bob Cattemeis, Bruce Hlavacek, Bob Branstetter, Coach Cleus Helms. FOURTH ROW: George Packins, Buddy Simmons, Mike Mulcolby.

Linda Seblek presenting first place trophy to Jefferson City.

Leola Jackson presenting consolation trophy to St. Elizabeth.



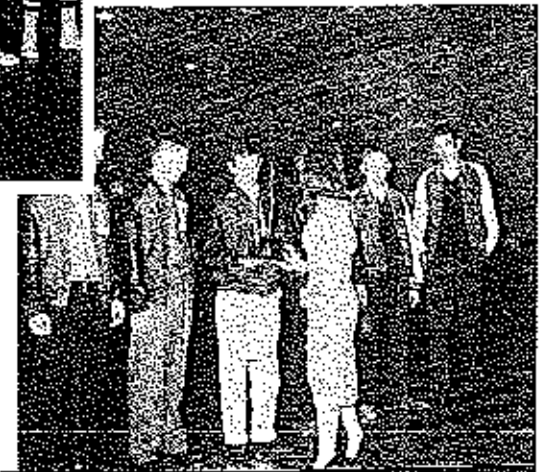
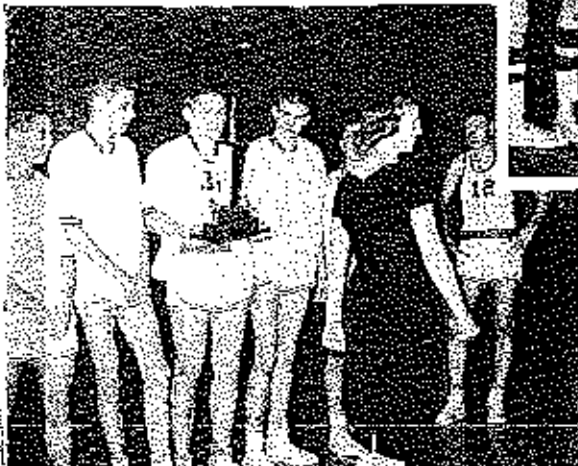
Pat Trimsan presenting second place trophy to Chwastville.

Eldon Tournament 1960

Ruth Bond, Queen, presenting first place basketballs to Jefferson City.



Pat Clayton presenting third place trophy to Dixon.





Coach Holms



Coach Hodges

Jim "A"



Claukie "A"



Dwain "A"



George "A"



J. C. "A"



**Eldon High School
Basketball
Schedule 1959-60**

Nov. 20	Eldon vs. Greenfield
Nov. 21	Eldon vs. Miller
Nov. 24	Eldon at Tipton
Dec. 1	California at Eldon
Dec. 4	Eldon at Orange
Dec. 8-12	Tipton Tournament
Dec. 15	Vasallies at Eldon
Dec. 18	Camdenton at Eldon
Dec. 22	Jefferson City at Eldon Homecoming
Jan. 5	Eldon at Stover
Jan. 11	Eldon at Boonville
Jan. 12	Eldon at Tipton
Jan. 15	Boonville at Eldon
Jan. 19-22	Fulton Tournament
Jan. 26	Eldon at California
Feb. 1-7	Eldon Tournament
Feb. 9	Eldon at Vasallies
Feb. 12	Eldon at Camdenton
Feb. 19	Stover at Eldon
Feb. 22-27	Regional Tournament

Ronald "B"



Bob "B"



Myron "B"



Mike "B"



Bruce "B"

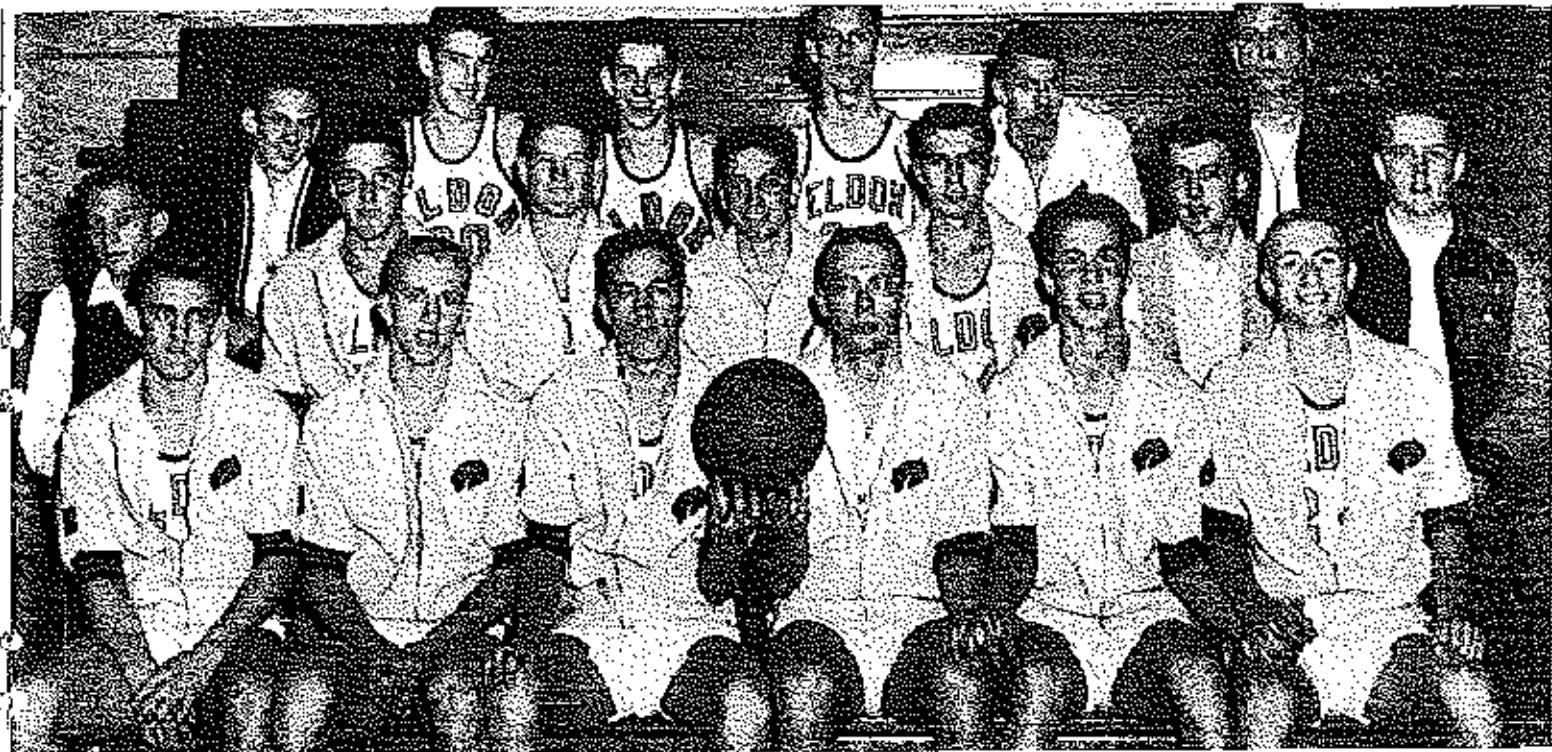


Managers
Duane & Robln



Managers
Bob & George





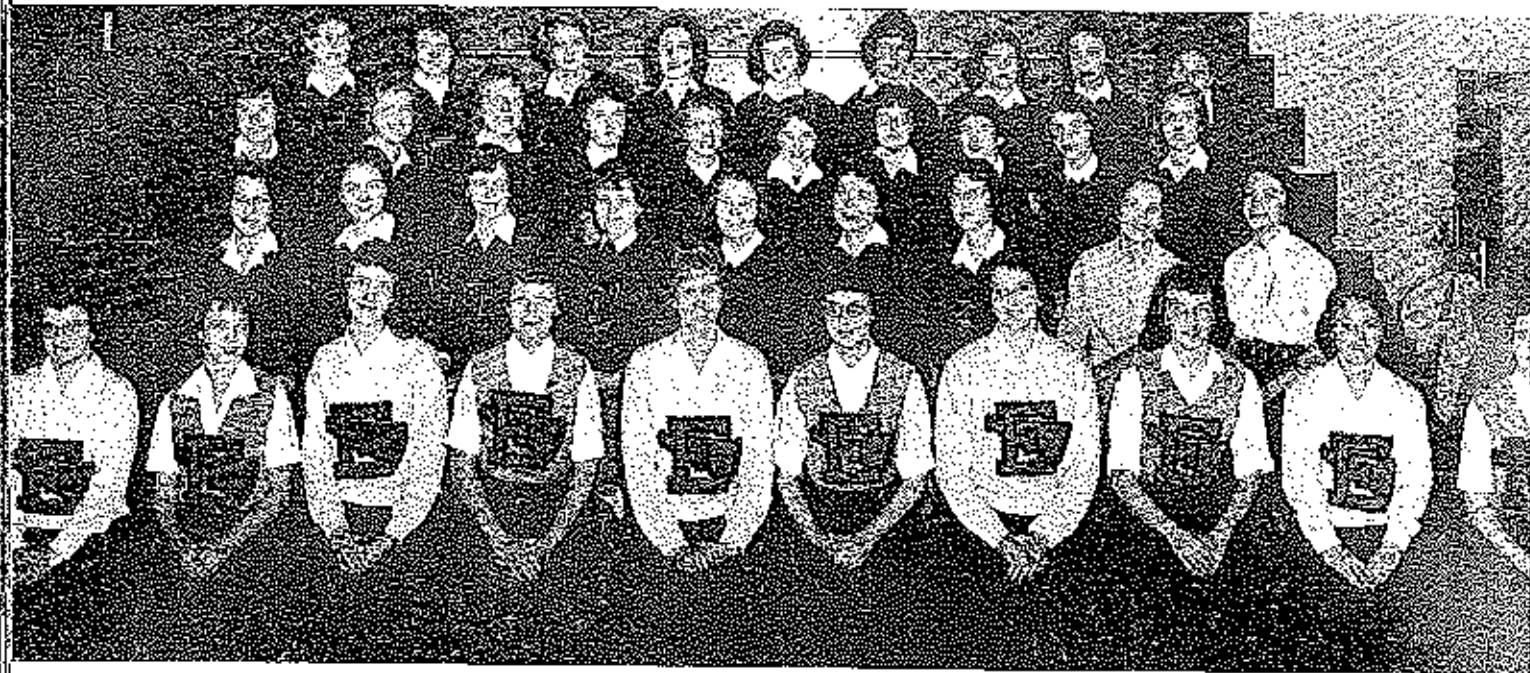
"A" Team

FIRST ROW: Charles Hayes, George McDaniel, David Pace, J.C. Howell, Buddy Simmons, Lorry Ford. SECOND ROW: George Farkas, Jim Penwilde, Roger VanPool, Owen Wood, Duane Nichols, Robin Patterson. THIRD ROW: Bob Guttmann, Lee West, Kenny Sals, Myron Scott, Mike Mulcahy, Coach Clell Helms.

"B" Team

FIRST ROW: Mike Mulcahy, Sam Upton, Ronnie Jesse, Bruce Hlavacek, Francis Varson, Bob Campbell, Myron Scott. SECOND ROW: Coach Ed Hodges, Bob Waltersheide, Don Richardson, David Crane, Rex Richardson, Doug Baruch, Bill Grigler, Paul Vaughan, George Puckles. THIRD ROW: Robin Patterson, Duane Nichols, Bill Longino, Jerry Halsey, Sill Newack, Morris Hunt, Howard Waffe, Bob Gannon.





Pep Club

FIRST ROW: Barbara Apperson, Mary Kay Newton, Sus Gerhart, Penny Bailey, Margaret Nowack, Pat Reynolds, Kay Davies, Donna Dyer, Carolyn Barker, Evelyn Lupasius. SECOND ROW: Donna Allen, Linda Schick, Leolla Jackson, Billie Sue Hinds, Pat Claxton, Anita Cushman, Betty Everts, Miss Martha Spinks, Mrs. Sarah Brockman, Sponsor. THIRD ROW: Jonhoe Vernon, Sonula Davis, Barbara Imles, Beth Veeran, Carol Kahr, Pat Gartner, Carolyn Roedel, Judy Ford, Janet Clark, Bonnie Alpars. FOURTH ROW: Merilyn Salsatz, Vickie Slack, Barbara Calhoon, Rosa Marie Rice, Kathy Knuch, Lois Harmon, Barbara Crowder, Linda Rohse, Betty Gartin.



"A" Cheerleaders

Margaret Blunock
Kay Davies
Sus Gerhart
Carolyn Barker
Barbara Apperson

"B" Cheerleaders

Penny Bailey
Mary Kay Newton
Pat Reynolds
Evelyn Lupasius
Donna Dyer





Senior High Volleyball

FIRST ROW: Carol Kehr, Carol Rains, Phyllis Waffis, Billie Sue Hinds, Shirley Stone, Mary Newton, Judy Holt. SECOND ROW: Kay Davies, JoAnn Dunston, Beverly Volkoff, Barbara Apperson, Sue Garhart, Betty Buchanan. THIRD ROW: Coach Ed Hodges, Anita Cochran, Manager.

Junior High Volleyball

FIRST ROW: Darlene Workman, Donna McKinlay, Judy Shepherd, Jessa Shaw, Billie Doveyport, Donna Dyer, Nancy Hall, Manager. SECOND ROW: Mildred Reins, Connie Wells, Bonnie Baatman, Barbara Simmons, Pam Burt, Janice McDaniel, Coach Ed Hodges. THIRD ROW: Phyllis Baatman, Sue Thomas, Sandy Geuphar, Barbara Crawford, Cousie Patterson.





ENERGETIC ERNIE.



NONCHALANT NORMAN.



LIKEABLE LARRY.



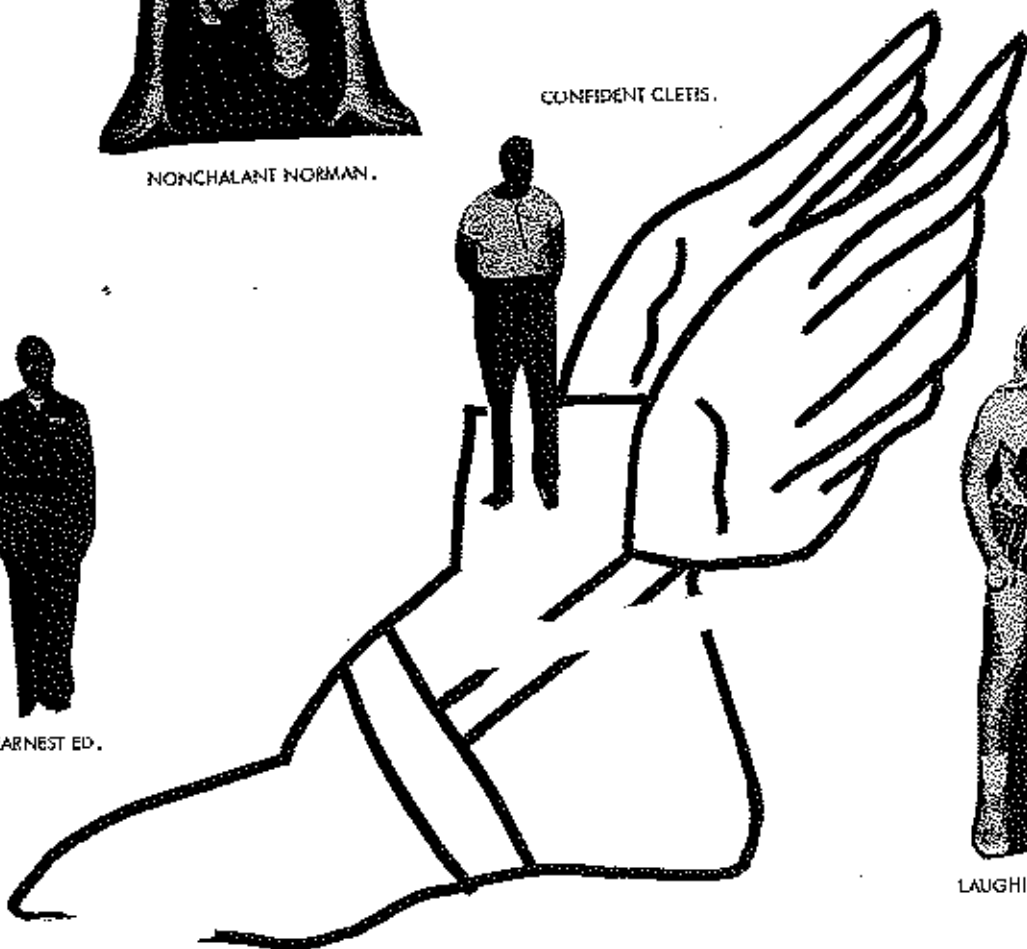
GORGEOUS GEORGE.



EARNEST ED.



CONFIDENT CLEVIS.



LAUGHING LARRY.



BOUNCINESS BRENT.



JIVY J.



DELIRIOUS DAN.



BOISTEROUS B.



Donna and George.



Linda, Joyce, and Betty.

Senior Questionnaire 1959-1960

Most Popular Girl
Most Popular Boy
Girl With The Biggest Feet
Boy With The Biggest Feet
Girl With The Smallest Feet
Boy With The Smallest Feet
Girl With The Most Wind
Boy With The Most Wind
Girl Most Likely To Succeed
Boy Most Likely To Succeed
Girl Who Is The Biggest Politician
Boy Who Is The Biggest Politician
Three Smartest Girls

Three Smartest Boys

Three Dumbest Girls

Three Dumbest Boys

Most Neatly Dressed Girl
Most Neatly Dressed Boy
Girl With The Prettiest Eyes
Boy With The Prettiest Eyes
Girl With The Prettiest Hair
Boy With The Prettiest Hair
Girl Most Likely To Marry
Boy Most Likely To Marry
Girl Most Likely Not To Marry
Boy Most Likely Not To Marry
Best Girl Dancer
Best Boy Dancer

Donna Jester
George McDaniel
Sandra Davis
Norman Bashore
Sharron Robinson
Eddie Crown
Donna Allen
Mike Craig
Leotta Jackson
J.C. Howell
Mary Jo Farmer
Gene Haynes
Linda Schick
Joyce Taylor
Betty Eilers
Raymond Bond
Gene Haynes
Larry Ford
Barbara Weeks
Virginia Radcliff
Deloris Bond
David Pace
Walter Ward
Jerry Liley
Linda Jarrett
Gale Denison
Sue Tetley
Charles Hayes
Ruth Bond
Edward Beanland
Geraldine Dane
John Stickney
Janice Wyrick
David Pace
Jackie Crane
George McDaniel



Colin and Linda.



George and Jackie.

Raymond, Lorry, and Geise.



J.C. and Leotta.

