

Eldon High School

Ref 001 Ref  
Eldon High School, Referat 1962.



T 20968



**JOANN DUNSTAN**  
Girls' Glee Club 3; Band 2, 3, 4; Music Contests 2, 3, 4; Fall Festival 1, 2, 3, 4; Christmas Program 3; Future Homemakers of America 4; Science Club 1, 2; Senior High Volleyball 3, 4; Junior High Volleyball 1, 2; Senior High Softball 4; Sports Day 3, 4; Speech Contests 4; Band Librarian 3.



**JUDITH BLANCHE HOLDT**  
Future Homemakers of America 3; Science Club 2; Cooperative Occupational Education 3, 4; Senior High Volleyball 3; Junior High Volleyball 1, 2; Office Worker 4.

Honoree  
4; Girls  
Contest  
4; Fall  
Homes  
4; Bible  
2; Pep C  
Occupat  
Speech  
2, 3.



**DWAYNE DUNCAN JR.**  
Prince of Hearts 4; Chorus 3, 4; Boys' Glee Club 3, 4; Vocal Clinics 4; Music Contest 4; Spring Show 3, 4; Fall Festival 3, 4; Cooperative Occupational Education 4; Student Council 4; Three-Act Play 4; Speech Contests 4; Whitmer High School 1, 2.

**MARY KAY NEWTON**  
Home Room Secretary 4; Fall Festival 3; Cheerleader 2, 3, 4; Softball Team Manager 3; Pep Club 1, 2, 3, 4; Cooperative Occupational Education Secretary-Treasurer 4; Future Homemakers of America 3, 4; Co-operative Occupational Education 4; Volleyball Team 2, 3, 4.



**ROSEANN BRINKSTESSER**  
Fall Festival Princess 4; Fall Festival Maid 3; Girls' Glee Club 2, 3; Vocal Clinics 2; Music Contests 2, 3; Christmas Program 2, 3, 4; Spring Show 3; Future Homemakers of America 2, 4; Pep Club 3, 4; Speech Contests 4; Library Staff 2; Sports Day 4.

JUDITH K  
Christmas Pro  
gram 3; Future  
Homemakers  
1, 2;



**ELLEN MARIE COOPER**  
Future Homemakers of America 3, 4; Bible Club 3; Library Staff 3; Cafeteria Worker 1, 2; REFERENT Copyreader 4; MAROON AND GOLD Copyreader 4.



**CAROLYN JEAN CLAXTON**  
Princess of Hearts 4; Chorus 1, 2, 4; Girls' Glee Club 1, 2, 3, 4; Vocal Clinics 1, 2, 3, 4; Band 1, 2; Music Contests 1, 2, 3, 4; Christmas Program 1, 2, 3, 4; Oklahoma 1; Spring Show 2, 3, 4; Future Homemakers of America 2; Science Club 3; Pep Club 1, 2, 4; MAROON AND GOLD Staff 4; REFERENT Staff 4; Speech Contests 4; Office Workers 2, 3, 4; Sports Day 3; Music Librarian 1.



**PENELOPE BASLEY**  
REFERENT Assistant Editor 4; MAROON AND GOLD Business Manager 4; Chorus 2, 3, 4; Vocal Clinics 2, 4; Girls' Glee Club 1, 2, 3, 4; Music Contests 1, 2, 3, 4; Christmas Program 1, 2, 3, 4; Oklahoma 1; Spring Show 2, 3, 4; Fall Festival 1, 2, 3, 4; Future Teachers of America 2, 3; Pep Club 1, 2, 3, 4; Thespians 2, 3, 4; Speech Contests 3; Cheerleader 2, 3, 4; Monitor 1, 2, 3; Honor Society 2, 3, 4; Girls' State 3; One-Act Plays 3; Publication Workshops 4; Three Act Play 4.



**JANE JOBE**  
 Homecoming Candidate  
 Glee Club 3; Music  
 Christmas Program  
 Council 1; Future  
 Teachers of America 1, 3,  
 4; Science Club  
 1, 4; Cooperative  
 Education 4;  
 Library Staff



**JANET CLARK**  
 Pep Club President 4; Class  
 Vice-President 1; Class Secre-  
 tary 3; Honor Society Vice-  
 President 4; Band President 3;  
 Student Council 2; Monitor 2,  
 3; Honor Society 2, 3, 4; Pep  
 Club 1, 2, 3, 4; Fall Festival 1,  
 3, 4; Spring Show 2, 4; Okla-  
 homa 1; Christmas Program 1,  
 2, 4; Music Contests 1, 2, 3, 4;  
 Band 1, 2, 3, 4; Vocal Clinics  
 2, 4; Girls' Glee Club 1, 2, 3, 4;  
 Chorus 1, 2, 3, 4.



**ROBERT WESLEY GATTERMBER**  
 Class Secretary 4; Science Club  
 Treasurer 1; Sophomore Phi-  
 gamma; Fall Festival Usher 2;  
 Christmas Program 1, 2; Okla-  
 homa 1; Fall Festival 1, 2, 3, 4;  
 Science Club 1, 2; B Club 2, 3,  
 4; Junior High Softball 1; Team  
 Manager 1, 2, 3, 4; One-Act  
 Plays 2; Speech Contests 2, 4;  
 Honor Society 2, 2, 1; Three  
 Act Play 4.



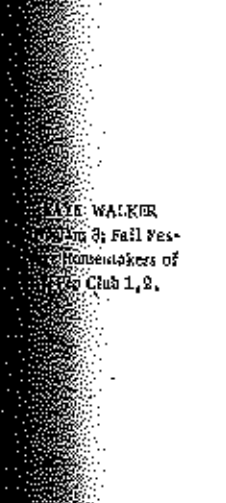
**RAYMOND EDWARD RADER**



**SHIRLEY RUTH FLAUGHTER**  
 Business Manager 4;  
 MARCONI AND GOLD Staff  
 4; Fall Festival 1, 4; Future  
 Homemakers of America 4;  
 Science Club 2; Spring Show 2,  
 4; Vocal Clinics 1, 2, 3, 4;  
 Christmas Program 1, 2, 4; Ok-  
 lahoma 1; Chorus 2, 4; Girls'  
 Glee Club 1, 2, 3, 4; Student  
 Council 1; Junior High Volley-  
 ball 1; Three Act Plays 4;  
 Speech Contests 1, 2; Library  
 Staff 1; Music Contests 1, 2, 3,  
 4; Bible Club 1.



**BRUCE ELLIOTT BLAVACEK**  
 Class President 1, 2, 3; Student  
 Council President 4; Boy's State  
 3; Student Council State Con-  
 vention 3, 4; Chorus 1, 2, 3, 4;  
 Boys' Glee Club 1, 2, 3, 4; Fall  
 Festival 1, 2, 3, 4; Spring Show  
 2, 4; Oklahoma 1; Christmas  
 Program 1, 2, 3, 4; Music Con-  
 tests 1, 2, 3, 4; B Club 2, 3, 4;  
 Student Council 1, 2, 3, 4;  
 Track 2, 3, 4; A Basketball 3,  
 4; Varsity Football 2, 3, 4; Jun-  
 ior High Softball 1; B Basket-  
 ball 1, 2; Speech Contest 4;  
 Honor Society 3, 4.



**KAYE WALKER**  
 Homecoming 3; Fall Festi-  
 val Usher 4; Future  
 Homemakers of  
 America Club 1, 2.



**BETTY LOU GREEN**  
 Fall Festival Usher 4; Pep Club  
 3; Office Worker 4.





**FRANCES ELAINE HESS**  
**MAROON AND GOLD** Art Editor 4; **REFERET** Art Editor 4; One-Act Plays 2; Publication Workshops 4; Oratorical Contest 4; Secretary Future Homemakers of America 2; Regional Historian Future Homemakers of America State Convention 1; Chorus 2, 3, 4; Fall Festival 3, 4; Girls' Glee Club 2, 3, 4; Music Contest 2, 3, 4; Christmas Program 2, 3, 4; Oklahoma 1; Spring Show 2, 3, 4; Future Homemakers of America 1, 2; Speech Contests 2, 4; Library Staff 2; Honor Society 2, 4; Three-Act Play 4.



**SAMUEL TOMMY UPTON**  
 King of Hearts 4; Honor Society President 2; Student Council 4; A Basketball 3, 4; B Basketball 1, 2; Honor Society 2, 3, 4; Bible Club Vice-President 2; Boys' State 2; Fall Festival Escort 1; Student Council Convention 2; Chorus 1, 2, 3, 4; Boys' Glee Club 1, 2, 3, 4; Vocal Clinics 1, 2, 4; Band 1, 2, 3; Music Contests 1, 2, 3, 4; Christmas Program 1, 2, 4; Spring Show 2, 4; Sparkletones 1, 2; Fall Festival 2, 3, 4; Bible Club 1, 2; B Club 2, 4.

**BARBARA JANE CALHOON**  
 Christmas Program 1, 2, 3; Fall Festival 3, 4; Future Teachers of America 2; Science Club 1; Pep Club 1, 2, 3, 4; Theatians 2, 4; **MAROON AND GOLD** Assistant Editor 4; **REFERET** Editor 4; Speech Contests 1, 2, 3, 4; Honor Society 2, 3, 4; Girls' State 2; Publication Workshops 2; Three-Act Play 4; Honor Society Secretary-Treasurer 4.



**KATHLEEN ANN KNOCH**  
 Princess of Hearts 4; Fall Festival Maid 2; Class Treasurer 2; Home Room Secretary 4; **MAROON AND GOLD** Staff 4; **REFERET** Staff 4; Office Worker 2, 4; Chorus 1, 4; Girls' Glee Club 1, 2, 3, 4; Christmas Program 1, 2, 3, 4; Music Contests 1, 2, 3, 4; Oklahoma 1; Fall Festival 3, 4; Science Club 1; Pep Club 1, 2, 3, 4; Senior High Volleyball 4; Three-Act Play 4; Speech Contests 2, 4; Junior High Volleyball 1; "A" Cheerleader 4.



**SHARON ANN DAWSON**  
 Queen of Hearts 4; Fall Festival Princess 4; Homecoming Candidate 4; Fall Festival Maid 1; Student Council 1, 2; Class Vice-President 2; Class Secretary 2; Honor Society Secretary 4; Chorus 1, 2, 3, 4; Girls' Glee Club 1, 2, 3, 4; Vocal Clinics 1, 2, 3, 4; Music Contests 1, 2, 3, 4; Christmas Program 1, 2, 3, 4; Oklahoma 1; Spring Show 1, 2, 4; Fall Festival 1, 2, 4; Future Homemakers of America 2, 4; Pep Club 1, 2, 4; **MAROON AND GOLD** Staff 4; **REFERET** Staff 4; Three-Act Play 4; Speech Contests 3, 4; Honor Society 2, 3, 4; Girls' Glee Club Librarian 1; Office Worker 2.



**MICHAEL ROY MULCAHY**  
 Class President 4; B Club President 4; Fall Festival Escort 1; Fall Festival Master of Ceremonies 4; **MAROON AND GOLD** Sports Editor 4; **REFERET** Staff 4; Homecoming Escort 4; Christmas Program 4; Fall Festival 1, 2, 3, 4; B Club 2, 3, 4; Student Council 3, 4; Track 2, 3; A Basketball 3, 4; B Basketball 1, 2; Varsity Football 2, 3, 4; Junior High Softball 1; Speech Contests 4; Honor Society 3, 4.



**RONNIE GENE JESSE**  
 Prince of Hearts 4; Home Room President 4; Class Treasurer 1; Fall Festival Escort 2; Homecoming Escort 4; Chorus 2, 4; Boys' Glee Club 1, 2, 3, 4; Vocal Clinics 1, 2, 3, 4; Christmas Program 1, 4; Spring Show 2, 3, 4; Fall Festival 1, 2, 4; Oklahoma 1; B Club 2, 3, 4; Student Council 1, 3, 4; Track 2, 3, 4; A Basketball 3, 4; B Basketball 1, 2; Varsity Football 2, 3, 4; Junior High Softball 1.



**SHIRLEY NEDRA PACE**  
 Chorus 1, 2, 3, 4; Girls' Glee Club 1, 2, 3, 4; Vocal Clinics 2, 3, 4; Music Contests 1, 2, 3, 4; Christmas Program 1, 2, 3, 4; Oklahoma 1; Spring Show 1, 2, 4; Future Homemakers of America 1; Pep Club 1, 2; Senior High Volleyball 4; Volleyball Manager 3.



BA:  
 Chorus:  
 Club 1:  
 2, 4; NU  
 Chorus  
 Spring 2  
 1; Fall 1  
 pace Ch  
 2; Chorus  
 Act Play  
 Student  
 Contests  
 Spring 2;  
 MARCH  
 4; DAR T  
 Editor  
 Vice-Pres  
 2; Public

BA:  
 Student  
 4; Student  
 Speech C  
 Club 1; t  
 Eason Ed  
 Angelo  
 Editor

AMUEL TO...  
 of Home...  
 President...  
 A Basketball...  
 Ball 1, 2, 3, 4;...  
 Girls' Glee...  
 Boys' State 3;...  
 or 1, 2, 3, 4;...  
 Club 1, 2, 3, 4;...  
 Girls' Glee...  
 Club 1, 2, 3, 4;...  
 Vocal Clinics...  
 1, 2, 3, 4;...  
 Program 1, 2, 3, 4;...  
 Oklahoma 1, 2, 3, 4;...  
 Fall Festival 1, 2, 3, 4;...  
 Peps Club 1, 2, 3, 4;...  
 Plays 2; Three-...  
 Theaters 3, 4;...  
 Speech...  
 1, 2, 3, 4;...  
 Class Sec-...  
 Society 2, 3, 4;...  
 AND GOLD Editor...  
 PAPERET Assis-...  
 Honor Society...  
 Girls' State...  
 Workshops 4.

MARIS ROSE  
 1, 2, 3, 4; Girls' Glee  
 Club 1, 2, 3, 4; Vocal Clinics  
 1, 2, 3, 4; Music  
 Contests 1, 2, 3, 4;  
 Program 1, 2, 3, 4;  
 Oklahoma 1, 2, 3, 4;  
 Fall Festival 1, 2, 3, 4; Sci-  
 ence Club 1, 2, 3, 4;  
 Peps Club 1, 2, 3, 4;  
 Plays 2; Three-  
 Theaters 3, 4;  
 Speech...  
 1, 2, 3, 4;...  
 Class Sec-...  
 Society 2, 3, 4;  
 AND GOLD Editor...  
 PAPERET Assis-...  
 Honor Society...  
 Girls' State...  
 Workshops 4.



RALPH EDWIN IMLER  
 Secretary Future Farmers of  
 America 2; President Future  
 Farmers of America 4; Fall  
 Festival 4; Future Farmers of  
 America 1, 3, 3, 4.



JOYCE ANN DOOLEY  
 Band 1, 2, 3, 4; Music Contests  
 1, 2, 3, 4; Science Club 2; Peps  
 Club 1.



EVELYN LUPARDUS  
 Girls' Glee Club Secretary 3;  
 Band Vice-President 2, 3, 4; Fall  
 Festival Herald 1; Chorus 1, 2,  
 3, 4; Student Council Convention  
 3; Girls' Glee Club 1, 2, 3, 4;  
 Vocal Clinics 1, 4; Band 1, 2, 3,  
 4; Music Contests 1, 2, 3, 4;  
 Christmas Program 1, 2, 3, 4;  
 Oklahoma 1; Spring Show 2, 3,  
 4; Sparknotes 2, 3, 4; Fall  
 Festival 1, 2, 3, 4; Science Club  
 1, 2; Peps Club 1, 2, 3; Student  
 Council 1, 2, 3; Speech Con-  
 text 1, 3; B Cheerleader 2, 3;  
 Monitor 3; Honor Society  
 Vice-President 4.

MICHAEL...  
 of Home...  
 President...  
 A Basketball...  
 Ball 1, 2, 3, 4;...  
 Girls' Glee...  
 Boys' State 3;...  
 or 1, 2, 3, 4;...  
 Club 1, 2, 3, 4;...  
 Girls' Glee...  
 Club 1, 2, 3, 4;...  
 Vocal Clinics...  
 1, 2, 3, 4;...  
 Program 1, 2, 3, 4;...  
 Oklahoma 1, 2, 3, 4;...  
 Fall Festival 1, 2, 3, 4;...  
 Peps Club 1, 2, 3, 4;...  
 Plays 2; Three-...  
 Theaters 3, 4;...  
 Speech...  
 1, 2, 3, 4;...  
 Class Sec-...  
 Society 2, 3, 4;...  
 AND GOLD Editor...  
 PAPERET Assis-...  
 Honor Society...  
 Girls' State...  
 Workshops 4.

MICHAEL...  
 of Home...  
 President...  
 A Basketball...  
 Ball 1, 2, 3, 4;...  
 Girls' Glee...  
 Boys' State 3;...  
 or 1, 2, 3, 4;...  
 Club 1, 2, 3, 4;...  
 Girls' Glee...  
 Club 1, 2, 3, 4;...  
 Vocal Clinics...  
 1, 2, 3, 4;...  
 Program 1, 2, 3, 4;...  
 Oklahoma 1, 2, 3, 4;...  
 Fall Festival 1, 2, 3, 4;...  
 Peps Club 1, 2, 3, 4;...  
 Plays 2; Three-...  
 Theaters 3, 4;...  
 Speech...  
 1, 2, 3, 4;...  
 Class Sec-...  
 Society 2, 3, 4;...  
 AND GOLD Editor...  
 PAPERET Assis-...  
 Honor Society...  
 Girls' State...  
 Workshops 4.



MYRON DEAN SCOTT  
 Honor Society President 4;  
 Boys' State 3; Fall Festival Es-  
 cort 2; Homecoming Escort 4;  
 Chorus 1, 2; Boys' Glee Club 1,  
 2; Vocal Clinics 1, 2; Music  
 Contests 1, 2; Honor Society 2,  
 3, 4; Christmas Program 1, 2;  
 Oklahoma 1; Fall Festival 1, 2,  
 3; Spring Show 2; B Club 3, 4;  
 A Basketball 2, 4; B Basketball  
 1, 2; Varsity Football 2, 3, 4;  
 Junior High Softball 1.



WANDA STEWART  
 Fall festival Maid 3; Chorus 1,  
 2; Girls' Glee Club 1, 2;  
 Christmas Program 1, 2; Spring  
 Show 2; Fall Festival 1, 2.



JAMES DAWSON HAYNES  
 Student Council 1, 2; Christ-  
 mas Program 4; Future Farmers  
 of America 1, 2; Speech Con-  
 texts 4.



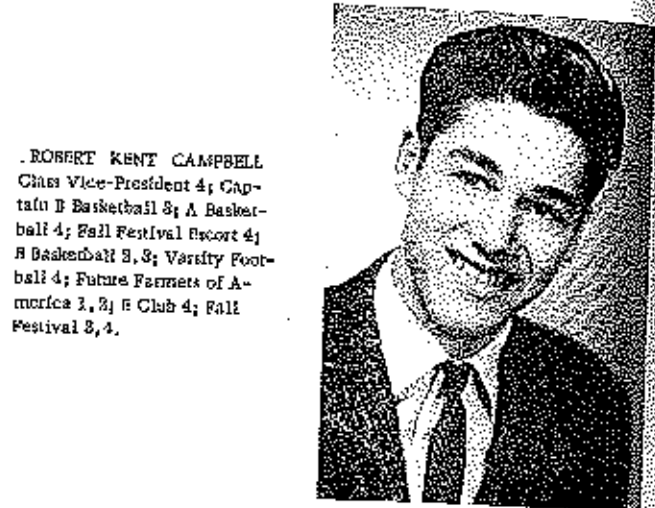
**VERNICE FRAN ANDRUS  
HUFFMAN**  
Future Homemakers of America 3, 4; Pop Club 1; Volleyball Manager 3.



**LINDA CIARNELL BARNHART**  
Future Homemakers of America 1; Science Club 2.



**WYETH EDWARD BOND**  
Cooperative Occupational Education 3, 4; Chorus 1; Boys' Glee Club 1; Christmas Program 1; Oklahoma 1; Spring Show 1; Fall Festival 1; Auto Club 2; Future Farmers of America 3; Cooperative Occupational Education Conventions 3, 4.



**ROBERT KENT CAMPBELL**  
Class Vice-President 4; Capital B Basketball 3; A Basketball 4; Fall Festival Escort 4; B Basketball 3, 3; Varsity Football 4; Future Farmers of America 1, 2; B Club 4; Fall Festival 3, 4.



**JUNIOR WADE BLANKENSHIP**  
Future Farmers of America Convention 2; Art Club 3; Future Farmers of America 1, 2, 3, 4.



**LYNN JOYCE TEAL**

**KELLY GEE**



**VIRGINIA MAE BLYTHE**  
Chorus 1, 2, 3, 4; Girls' Glee Club 1, 2, 3, 4; Vocal Clinics 1, 2, 3, 4; Music Contests 1, 2, 3, 4; Christmas Program 1, 2, 3, 4; Oklahoma 1; Spring Show 2, 3, 4; Fall Festival 1, 4; Bible Club 1, 2; MARCOON AND GOLD Effort 4; REFERET Staff 4; Cafeteria Worker 1.

**DONNA CORINE BELLAMY**  
Homecoming Queen 4; Student Council Treasurer 4; Fall Festival 2; Future Homemakers of America Recreation Leader 4; A Circleleader 4; Chorus 2, 3, 4; Girls' Glee Club 2, 3, 4; Vocal Clinics 4; Music Contests 2, 3, 4; Student Council Workshop 4; Spring Show 2, 3; Fall Festival 1; Pop Club 4; Future Homemakers of America 4; Bible Club 1, 2; Speech Contests 4; Senior High Softball 3, 4.



IDA GUARDIA  
 Mrs. Howard  
 Science



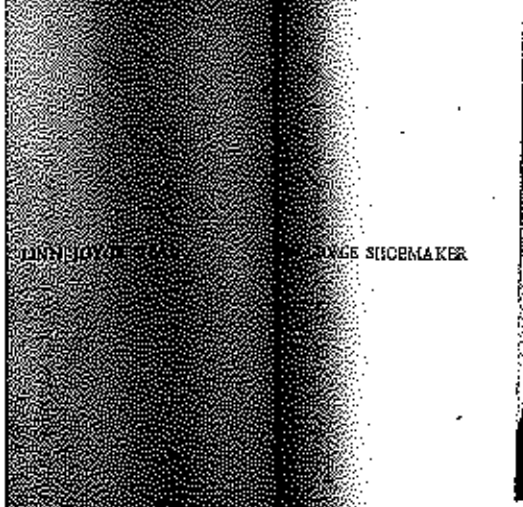
BEVERLY ANN JONES  
 Fall Festival Usher 4; Future  
 Homemakers of America 1, 2,  
 4; Pep Club 1, 2.



CURTIS JOE TRELMAN  
 Science Club 1; Cooperative  
 Occupational Education 3, 4.



BILLY JOE ROWLAND  
 Fall Festival 4; Speech Contest  
 4; Future Farmers of America  
 1, 2, 3, 4; Treasurer Future Far-  
 mers of America 3; Vice-Pres-  
 ident Future Farmers of Amer-  
 ica 3, 4.



JIMMY LEE RINGHART  
 Future Homemakers of Amer-  
 ica 4; Bible Club 1, 2; Cafeter-  
 ia Worker 1, 2, 3.



JIMMY LEE RINGHART  
 Future Farmers of America 2,  
 3, 4; Auto Club 1; Future Far-  
 mers of America Reporter; Li-  
 brary Staff 4.



HAZEL BRANSTETTER  
 Bible Club 2; Fall Festival  
 Usher 4.



PEGGY LOU ARNOLD  
Future Homemakers of America  
4; Mexico Senior High 2, 3.



DONNA SUE HOSKINS  
Chorus 1; Girls' Glee Club 1;  
Vocal Clinics 2; Music Contest  
1; Fall Festival 1, 2; Art Club  
1; Pep Club 1; Cooperative  
Occupational Education Presi-  
dent 4; State Cooperative Oc-  
cupational Education Con-  
vention 2, 4; State Cooperative  
Occupational Education Dele-  
gates' Meeting 2, 4.



MICHAEL DENNIS DUTCHER  
Art Club 3, 4; Auto Club 2.

HILEN LUCILLE JENKINS  
Future Teachers of America  
Song Leader 1; Treasurer Fu-  
ture Teachers of America 2;  
Historian Future Teachers of  
America 3; Girls' Glee Club  
3; Band 1, 2, 3, 4; Music Con-  
test 1, 2, 3, 4; Christmas Pro-  
gram 3; Fall Festival 4; Future  
Homemakers of America 3, 4;  
Future Teachers of America 1,  
2, 3; Speech Contest 1.



MARY ANN SCHUELER  
Cooperative Occupational Ed-  
ucation 3, 4; Future Home-  
makers of America 3; Science  
Club 2, 3; Pep Club 1; Future  
Homemakers of America Par-  
ticipations 3; Library Staff  
2; Office Worker 4.



CAROLYN JANE ROESEL  
Chorus 2, 3; Girls' Glee Club  
2, 3; Vocal Clinics 2, 3; Music  
Contests 2, 3; Christmas Pro-  
gram 2; Spring Show 2; Fall  
Festival 3; Future Homemakers  
of America 4; Pep Club 2, 3;  
Senior High Volleyball 4; Fall  
Festival Worker 4.

FAMISA  
Homeroom  
4; Fall F  
Secretary  
Pep Club  
Council E  
Vice-Pres  
Council 3  
Pep Club  
Fall Festival  
2, 4; Girls'  
Vocal Clin  
2, 4; Music  
Christmas 1  
Adorns 1.



SHARON KAY SCHUPP  
Fall Festival 4; Bible Club 1,  
2; Library Staff 2, 3; Cafeteria  
Workers 1, 2, 3.

HILEN DEE SCITUPP  
Art Club 1; Future Homemakers  
of America 4; Cafeteria Work-  
er 1, 2, 3.





SUE HOSKINS  
 Glee Club 1,  
 3, 4; Music Con-  
 cert 1, 2; Art Club  
 1; Cooperative  
 Occupational Educa-  
 tion 1; Cooperative  
 Occupational Educa-  
 tion Conference  
 1; Cooperative  
 Occupational Educa-  
 tion Delegation  
 3, 4.

BEVERLY SUE BROWN  
 Future Homemakers of Amer-  
 ica 3; Science Club 2; Coop-  
 erative Occupational Education  
 3, 4; Pep Club 1; Cooperative  
 Occupational Education Re-  
 ception 4.



CAROLYN GAIL BARKER  
 Cheerleader 1; "A" Cheer-  
 leader 2; Pep Club 1, 2.



HELEN COOPER  
 Future Homemakers of Amer-  
 ica 3, 4; Pep Club 1; Manager  
 of Senior High Volleyball 2.



JANICE RUTH CONNER

RON JUNG ROBBEL  
 Girls' Glee Club  
 Clinics 2, 3; Music  
 3; Christmas Pro-  
 gram Show 2; Fall  
 Future Homemakers  
 1, 4; Pep Club 2, 3;  
 Volleyball 3; Fall  
 Dinner 4.

JANNA RAVENA FLAUGHER  
 Homecoming Queen Candidate  
 1; Fall Festival Maid 2; Band  
 Secretary 3; Band President 4;  
 Pep Club Secretary 3; Student  
 Council Secretary 4; Class  
 Vice-President 3; Student  
 Council 3, 4; Chorus 2, 3, 4;  
 Pep Club 3, 4; Science Club 2;  
 Fall Festival 1, 2, 4; Chorus 2,  
 3, 4; Girls' Glee Club 1, 2, 3, 4;  
 Band Clinics 2, 4; Band 1, 2,  
 3, 4; Music Contests 1, 2, 3, 4;  
 Christmas Program 1, 2, 4; Ok-  
 lahoma 1.



RICHARD LEE EDISON  
 Future Farmer of America 1,  
 2; Cooperative Occupational  
 Education 3, 4; Cooperative  
 Occupational Education Con-  
 vention 2.



RICHARD BAUGHMAN  
 Cooperative Occupational Ed-  
 ucation 3; Auto Club 2; Co-  
 operative Occupational Educa-  
 tion Convention 3.



FRANCIS VERNON  
 The School of the Ours 1.



PHYLLIS ANN SCOTT  
Christmas Program 2; Pep Club  
1; Cooperative Occupational  
Education 3, 4; Cooperative  
Occupations; Education Con-  
vention 3, 4.



PAUL GENE HOLDER  
Cooperative Occupational Ed-  
ucation 3; Auto Club 1.

PAY  
Fall F  
4; Boy  
Club  
4; BSK



BARBARA JEAN HICKS  
Fall Festival Usher 4; Future  
Homemakers of America 1, 2,  
4; Cafeteria Worker 1.

EVA MARIE HUTTON  
Fall Festival Usher 4; Future  
Homemakers of America 3, 4;  
Future Homemakers of Amer-  
ica Vice-President; Purdy High  
School 1, 2.



GERRY SMITH



LUTHER CALVIN HICKS  
Science Club 1; Cooperative  
Occupational Education 3, 4.

CHAM  
Chlorine  
Fall Fest  
2; Fall F

ROGER EDWARD PURL



Not Shown

JEANNINE BERTHA CORNETT  
Future Homemakers of Amer-  
ica 4; Zachary High School,  
Louisiana 1, 2, 3.

JOE GLEN JEFFRIES

WILLIAM DENNIS KELLY  
Cooperative Occupational Ed-  
ucation 4.

MR. GENE HOLT  
 Live Occupational Ed  
 8; Arts Club

MR. ANDREW ZIMMER  
 Festival Escort 4; Chorus  
 Glee Club 4; Vocal  
 Christmas Program  
 Club 2, 2.



MARGARET ANN REPLE  
 Fall Festival Maid 1; Girls'  
 Glee Club 2, 3; Vocal Clinics  
 2; Music Contests 2, 3; Spring  
 Show 2; Fall Festival 1, 2, 3, 4;  
 Representative Future Home-  
 makers of America District  
 Meeting 2; Three Act Plays 4;  
 Speech Contests 3, 4; Library  
 Staff 2, 3.



ROBERT CHILDS EVANS  
 Fall Festival 3, 4; Cooperative  
 Occupational Education 4;  
 Speech Contest 4; Library Staff  
 3, 4; Anderson High School,  
 New York 1, 2.



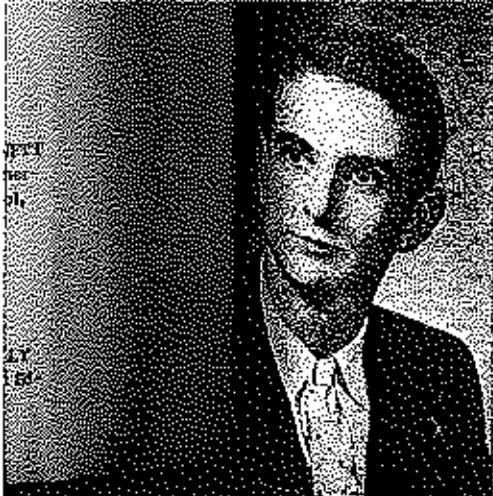
JUDE ANN THOMSON  
 Fall Festival Queen 4; Home-  
 coming Queen Candidate 4;  
 Home Room President 4; Cho-  
 rus 1, 3, 4; Girls' Glee Club 1,  
 3, 4; Vocal Clinics 2, 4; Music  
 Contests 3, 4; Christmas Pro-  
 gram 4; Spring Show 4; Fall  
 Festival 4; Pop Club 1, 4; Fu-  
 ture Homemakers of America  
 1, 4; Wason High School 2, 3;  
 East Junior High School 1.

HER CALVIN  
 ce Club 1; 2000 Club  
 National Education

OLAS IRWIN VERNON  
 1; Spring Show 1, 2;  
 1; Allite Club 1,  
 Festival Escort 1.



MR. NICHOLS



CHARLES WALTER  
 SHOEMAKER  
 Junior High Softball 1.



WILLIAM DALE LEFFERT  
 Oklahoma 1; Audio-Visual  
 Club 1; Science Club 1, 2, 3;  
 Library Staff 1; Cooperative  
 Occupational Education 4.



**THREE SMARTEST BOYS**  
 Sam Upton  
 Myron Scott  
 Paul Zimusz

**MOST POPULAR BOY**  
 Bruce Slavacek



**BIGGEST POLITICIANS**  
 Barbara Calloon  
 Jim Haynes

**DIRTIEST HAIR**  
 Ann Dunstan  
 Ed Campbell



**MOST NEATLY DRESSED**  
 Mary Ann Schuster  
 Wyeth Boud



**FRIENDLIEST**  
 Sharon Dawes  
 Buddy Imber

**BEST DANCERS**  
 Kathy Knock  
 Bruce Slavacek



**LIKELY NOT TO MARRY**  
 e  
 n



**MOST SCATTER-BRAINED**  
 Lucille Jenkins  
 Ray Hoover

**BIGGEST FEET**  
 Eva Hutton  
 Myron Scott





PHYSICIANS  
on



PRETTIEST HAIR  
Edam Duustan  
Ab Campbell



PRETTIEST EYES  
Carolyn Claxton  
Dow Duncan

FRIENDLIEST  
Sharon Dawson  
Buddy (male)



MOST WIND  
Carolyn Roedel  
Robert Gattemeir



THREE SMARTEST GIRLS  
Rose Marie Rice  
Barbara Callhoon  
Janet Clark



MOST LIKELY TO MARRY  
Joyce Dooley  
Joe Rowland



MOST POPULAR GIRL  
Judi Thomson



MOST LIKELY TO SUCCEED  
Rose Marie Rice  
Esm Upton



WATER-BRAIN  
ins



NOT SHOWN IN SENIOR CLASS

JOE McGRBW

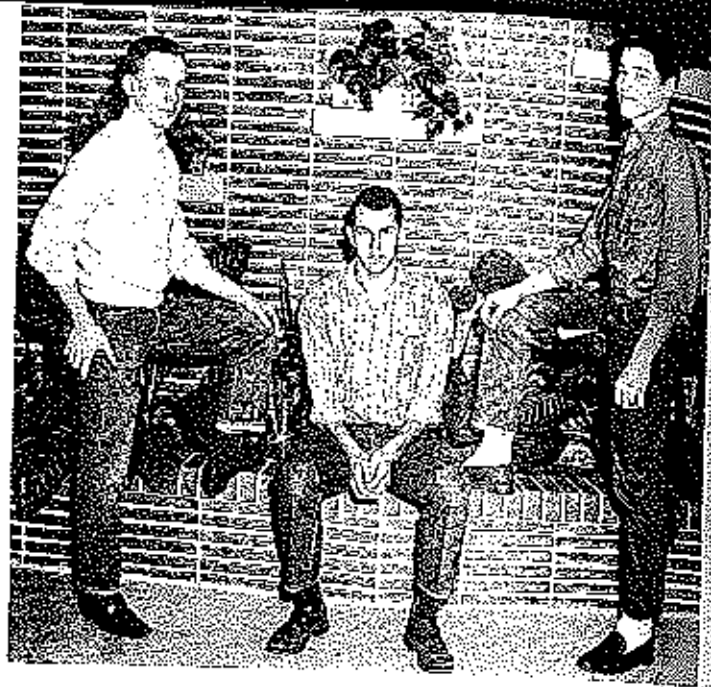
Stanton Military Academy 3; Notre Dame  
2; Dhaukan Senior Staff 1.

CLIFFORD VERNON REED

Flagstaff High School 1, 2.

JUDY EAYE KRONK

Chorus 4; Girls' Glee Club 4; Christmas  
Program 4; Future Homemakers of America  
4; Pep Club 4; Salina High School 1; Paulton  
High School 2; Beloit High School 3.



SENIOR CLASS OFFICERS--Robert Gastermeier, Secretary-Treasurer;  
Mike Mulcahy, President; Bob Campbell, Vice-President.

GIRLS' STATE '61--Penny Bailey, Rose Marie Rice and Bar-  
bara Calloun.



BOYS' STATE '61--Bruce Hlavacek, Sam Upton,  
and Myron Scott.

THE OUTLAWS--Peter Regan, Bill No-  
wack, Myron Scott, Ronnie Jesse, Mike  
Mulcahy, David Lind, Dennis Van Hooser,  
Bruce Hlavacek and Charles Clark.



SENIOR CLASS SPONSORS--Mr. John Dowler, Mrs. Freda Lane, Mr. Jerry Fric-  
ner and Mr. Gary Coryell.





Secretary-Treasurer,  
President.



Upton,

Inc., Mr. Jerry Frier



# UNDERCLASSMEN



Joe Albertson  
Bonnie Alpers  
Gordon Apperson  
Bill Badley  
James Blankenship

Lester Forrester



Jane Blomberg  
Bonnie Boatman  
Danny Bond  
Margaret Bowden

Sandra Gantlyler  
Conita Gray



Margaret Branstetter  
Nellie Branstetter  
Douglas Bunch

Sally Groll  
Lois Harmon  
Donna Hogg



Ronald Baris  
Luther Campbell

Jerry Henley  
Martha Houston  
Mary Houston  
Jane Kaman



Tommy Cantwell  
Eugene Cooper  
Thomas Cotton

Morris Hunt  
Katherine Keithley  
Don Kidwell



David Graue  
Bill Gripper  
Barbara Crowder  
Sharon Crum

Juanita Lake  
Paul Leap



Myrna Crum  
Arlene Currenco  
Carol Dayton  
Charles Dickenson  
Phil Dutcher

Ronald Lecjhen







Sandy Malden

Donald Richardson  
Ronald Richardson  
Hir Sanning  
Jean Shaw  
Judy Shepherd



Sharon Marriott  
Donna McKinley

Mike Shepherd  
Glenn Shoemaker  
Johnny Stark  
Sue Thomson



James McLaughlin  
Kent Maher  
Gordon Michois

Hazel Tryon  
Rosalie Twitche  
Paul Vaughan



Billy Nowack  
George Parkins  
Connie Patterson  
Penny Polty

Donna Vernon  
Jeffrey Waite



Dianna Porter  
Edward Powell  
Pat Price

Connie Wallis  
Bob Waltersheide  
Anne Whitney



Linda Rains  
Mildred Rains

Carol Wilson  
Howard Wolfe  
Milan Zimmer



Not Shown  
Leroy Alast  
Betty Gayle Garrin  
Julia Quick



Joyce Allen  
Ralph Apperson  
Alvia Apperson  
Norina Arnold



Richard Claxton



Norris Arnold  
Gene Asks  
Curtis Atkinson  
Betty Ayres



Betty Cienin  
Pat Corbys



Candy Barker  
Loretta Burkszesser  
Geardlean Bishop



Bill Conley  
Esther Cooper  
James Costen



Freddie Blankenship  
Phyllis Boatman



Kathryn Crane  
Patricia Crouch  
Patsy Crouch  
Karen Corruce



Fern Bohm  
Daisy Borton  
James Bowlin

Kay Curtis  
Linda Davenport  
Sherry Davis



Freddie Buchanan  
Richard Bunch  
Victor Bunch  
Bila Dee Burris



Gene Dilse  
Donald Dinwiddie



Milo Burris  
Aluca Calton  
Anna Calton  
Gary Carcender  
Dennis Wood



*Handwritten signature*

Edsel Drennon

Delbert Hayes  
Gay Helmer  
Norris Henley  
Marilyn Hibdon  
Karen Howser



Barbara Edelman  
Bill Evans

Darlene Ripenfrtz  
Joyce Jackson  
Hershel Jenkins  
David felt



Standon Farmer  
Danny Fredericksen  
Frank George

Nancy Jobe  
Marcia Jones  
Wayne Laughlin



Barbara Gier  
Earl Golden  
Don Gothard  
Carolyn Graham

Loretta Leuthe  
Sharon Leuthe



Diana Green  
Charles Hader  
Rosemary Hader

James Long  
Barbara Lowery  
Susie Luke



Jerry Haggertman  
Bob Yows

Larry McGill  
Howard Milburn  
Sandra Miles  
Diana Opte



Janet Hart

Carolyn Peck  
Gary Platz  
Sun Pyle  
Mike Pyle  
Cindy Quisley





Kenny Radt  
Ella Rainis  
Linda Rafns  
Carol Ray  
Jimmy Rosa



Barbara Sitamos



Larry Rice  
Ronnie Robinett  
John Schupp  
Paul Schupp



Gary Small  
Erel Smock



Vivian Scott  
(Raymond Servantes)  
Cathy Sletton



Phyllis Spratt  
Carol Stark  
Judy Stephens



Suzanne Shepherd  
Leslie Shoemaker



Charles Taylor  
Rebecca Thacker  
Carol Tracy  
Eddie Weaver



Not Shows  
Lanc Johnston  
Ronald Andrews  
Earlene Kennedy

Mary Wood  
Steve Wood



Do you smell formaldehyde?

No squares in this geometry class.

After

Before



SOPHOMORE  
ident: Suzanne  
President.



JUNIOR C  
Dickenson  
Vernon, N

FRESHMAN  
Secretary  
Vice-Presi



troops



SENIOR CLASS OFFICERS--Howard Milberg, Vice-President; Suzanne Shepherd, Secretary-Treasurer; Deibert Hayes, President.

FRESHMAN CLASS SPONSORS--Mr. Wayne R. Barke, Mrs. Margaret Calhoun, Mr. Roger McCreery, Mr. Clifford Greenway.



SOPHOMORE CLASS SPONSORS--Mr. David Shelton, Mr. Walter Mooney, Mrs. Martha Nesbit, Mrs. Sarah Stockman.



JUNIOR CLASS SPONSORS--Mrs. Phyllis Johnson, Mrs. Gladys Helms, Mrs. Alice Vernon, Mrs. Ruth Lupardus.



FRESHMAN CLASS OFFICERS--Sue Maher, Secretary-Treasurer; Dianne Barnhouse, Vice-President; Bill Hall, President.



JUNIOR CLASS OFFICERS--Donald Richardson, Vice-President; Ronald Richardson, President; Sandy Gopher, Secretary-Treasurer.





Linda Andres  
Avonda Andrews  
Earl Atkinson  
Larry Bauner  
Marilyn Barnhart



Larry Doffenbaugh



Dianne Barlowe  
Barbara Beauland  
Gary Beauland  
Robert Bishop



Linda Dickerson  
Hal Dolby



Donnie Bond  
Dennis Bond  
Henny Brohantzer

Senny Duffield  
Karen Doucun  
Dayle Doustan



Mike Callison  
Doug Campbell

Roger Eads  
Suzanne Edwards  
James Euowski  
Joyce Fisher



Mitch Campbell  
Mike Carter  
Charles Clark

Sally Fiers  
Carby Frank  
Carolyn Gier



Genevieve Clawson  
Sara Clawson  
Linda Clesin  
Judy Collman

Linda Gier  
Larry Golden



Linda Conner  
Julieann Crane  
Roy Crigler  
Kenneth Crouch  
Gary Dawson

Joan Gracy



Florence Green

Donald Howern  
Christie Howser  
Connie Howser  
Paul Howser  
Katherine Hunt



Howard Green  
Wally Groat

Phoebe Hartzlisch  
Debbie Imbler  
Bazy Jarrett  
Larry Jarrett



Wlang Hair  
Bill Hall  
Carolyn Handley

Sue Jeffries  
Hazel Jobe  
Al Jones



Tom Harmon  
Robert Hayes  
Ronnie Heathner  
Larry Helton

Linda Jones  
Sharon Kays



Robert Hibdon  
Dean Hicks  
Roger Hill

Betty Kompker  
Eddie Kompker  
Bobby Kerr



Wayne Hlavacek  
Marta Hoerneke

Barbara Kimball  
Linda Kratzer  
Bobby Kronk  
Don Love



Bill Hodge

Larry Leffert  
Lovena Lewis  
Margaret McBroom  
Janice McDaniels  
Sue Maier





Anna Martin  
Dennis Martin  
La Horna Martin  
Lyane Mitchell  
Laney Morris



Dwain Sachs



Paula Mosher  
Russell Parkhurst  
Joyce Peavy  
Connie Pratt



Edward Scott  
James Seaton



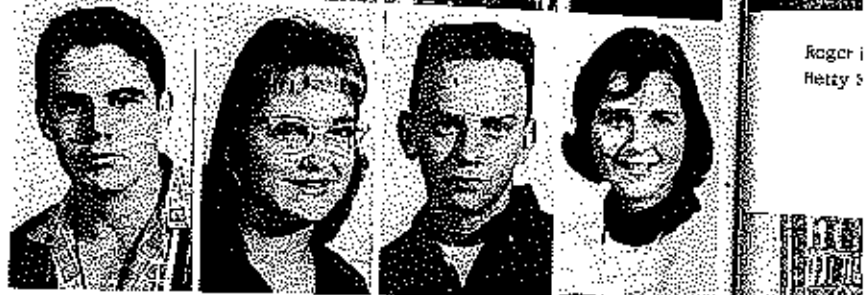
Steven Platz  
Larry Polly  
Kenneth Porter



Carol Shackelford  
Billy Shannon  
Laurel Smith



Shirley Potter  
Nancy Procter



Roger  
Betty

David Spencer  
Linda Stockwell  
David Taylor  
Evelyn Thacker



Mildred Ford  
Linda Pyfe  
Karen Quick



Hin Thornton  
Russel Thorson  
Daniel Turpen



Timon Rains  
Sharon Ray  
Gary Reed  
Olga Regalado



David Vernon  
Jane Watt



Alva Dale Wisnorski  
Charlene Rogers  
Ronald Wortley  
Stephen Rogers  
Mary Lee Rohls



Lynda Williams





Bonnie Wilson  
Faye Wlaters  
Christina Winters  
Gary Witt



Jim Harbison  
Chester Zuck



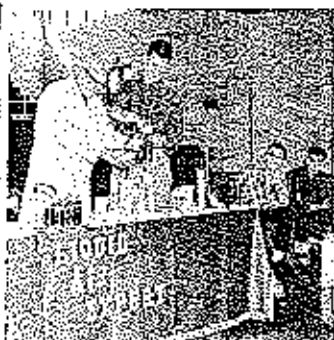
Jim Wood  
Kenneth Wood  
Richard Wood



Zealous students work.



Roger Robinson  
Betty Sue Howser



The second act gets better.



Not Shown  
Paul Chapman  
Sammy Stogsdiel  
David Upton  
Susan Billings

To the shelves of knowledge  
go blank minds.



Is there a driver in the crowd?

If you can't speak English, try Spanish.



We majored in mischief.



COOKS

FIRST ROW

Mrs. Helen Plumber  
Mrs. Juanita Rogers  
Mrs. Madie Denny

SECOND ROW

Mrs. Amy Thomson  
Mrs. Fern Hoshins  
Mrs. Belle Warnica  
Mrs. Noida Helton  
Mrs. Ruth Willfarms  
Mrs. Ruby Wallace



They Aid Our School



Mr. Ernest Miller, Custodian  
Mr. Raymond Marriott, Custodian

Mrs. Elsie Howden, School Nurse

Mrs. Madie Denny, Cafeteria Supervisor



Mr. Bert Apperson, Custodian



ber  
gets  
my

man  
the  
like  
then  
also  
ace

so  
feverish



# ACTIVITIES



John Doolin, Bill Hall, Danny Bond, Ronald Richardson, Gary Dawson, Sam Upton, Gary Carrador, Mike Mulcahy, Mr. Ross Brush, sponsor; Bruce Hlavacok, Ray Hoover, Pamela Flaughcr, Corine Bellamy, Lynne Mitchell, Diana Ople, Junita Lake, Charles Clark, Howard Milburn, Norris Henley, Route Jessc.



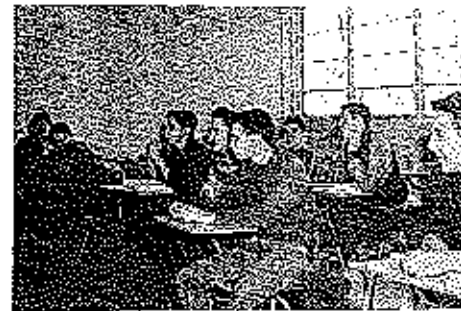
Great minds at work.



Let's plan a party!



Mr. Brush,  
do you have  
a suggestion?



Shall we take a vote?



Is there a second?

## Student Council



Corine Bellamy  
Treasurer



Pamela Flaughcr  
Secretary



Ray Hoover  
Vice-President



In  
Just give





er?



er  
sident.



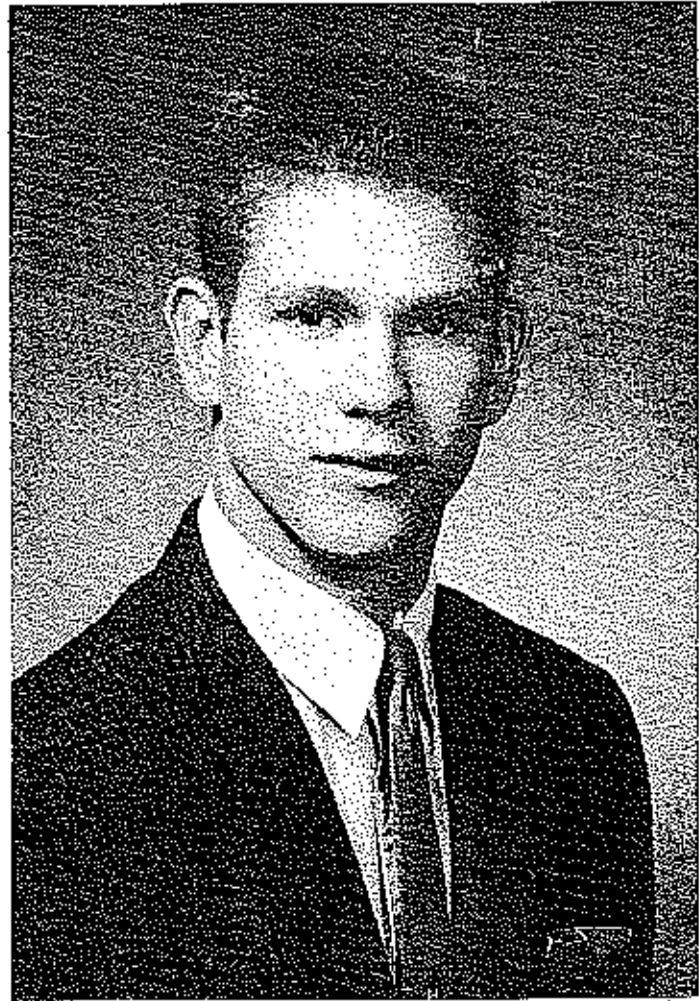
Is there a second?



Chemistry. Wow what firstest



In trouble again?  
Just give me forty winks.



Bruce Hlavacek  
President of Student Council

Let's win this one.

I'm ready to go in.





Sharon Dawson  
Secretary-Treasurer

Honor



Myron Scott  
President

F  
I  
R  
S  
T



Rose Marie Rice  
Vice-President

Society

S  
E  
M  
E  
S  
T  
E  
R



Myron Scott, President, FIRST ROW: Rose Marie Rice, Sharon Dawson, Sally Groth, Bonnie Alpers, Frances Hees. SECOND ROW: Mr. Walter Mooney, Sponsor; Pamela Flaughner, Connie Gracy, Janet Clark, Penny Bailey, Arlene Currence, Barbara Calhoun. THIRD ROW: George Parkins, Bruce Hlavacek, Mike Mulcahy, Sam Upton, Robert Gattermeir, Don Kidwell, Bill Crigler.

Barbara Calhoun  
Secretary-Treasurer



S  
E  
C  
O  
N  
D



George Parkins  
President

S  
E  
M  
E  
S  
T  
E  
R



Evelyn Inyardus  
Vice-President



What



FIRST ROW  
Vernon, Ma  
Charles Cla  
ROW: Con  
Schmitz, K  
Arlene Carr



What was



se Marie Rice  
ice-President

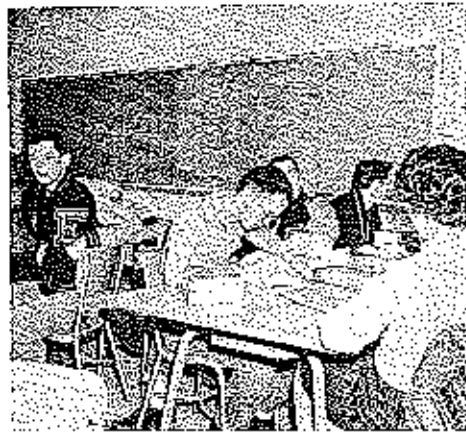
ciety

nce:  
y,  
thy,

velyn Lupardus  
Vice-President



What's the problem?



We work SO hard!



What's the first order of business?



FIRST ROW: Sam Upton, Bonnie Alpers, Sharon Hirschman, Sally Goeth, Bill Crigler. SECOND ROW: Judy Allen, Kay Davies, Janice Jensen, Mary Lou Gunn, Dwain Wood, Karen Goodrick, Lee West, Beverly Volkart. THIRD ROW: Jim Diuwiddle, Evelyn Lupardus, Charles Clark, Sharon Dawson, Robert Gattermeis, Penny Bailey, Myron Scott, Barbara Calhoon, Sharon Maher, Frances Iles. FOURTH ROW: Camille Gracy, David Proctor, Robert Sparks, Kenny Robb, Vicki Stark, Carolyn Jackson, Sue Gerhart, Don Kidwell, Marilyn Schmitz, Kent Maher, Pam Flaughter, George Parkins, Marilyn Bond, Janet Clark, Rose Marie Rice, Mike Mulcahy, Bruce Hlavacek, Lijene Cavence.

### Honor Society

### Spring Induction 1981

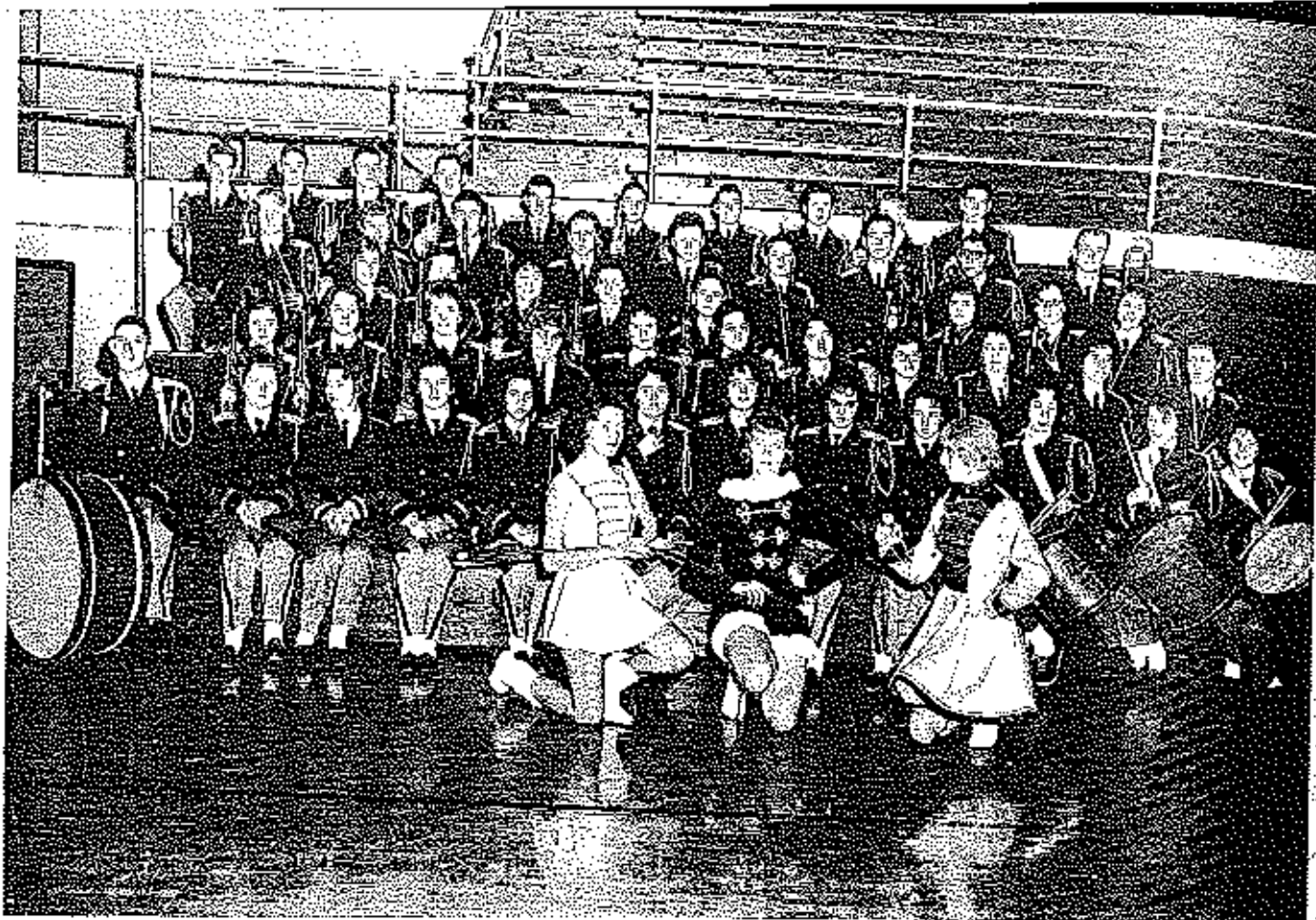
Beauty and brains.



What was that motion?



All we do is listen.



FIRST ROW: Diane Barnhouse, Sherri Davis, Janice McDaniel. SECOND ROW: Sam Clawson, Judy Stevens, Suzanne Shepherd, Ella Dee Burris, Cathy Shelton, Carol Dayton, Lovena Lewis, Arlene Cuccinco, Marilyn Hibdon, John Danstan, Christie Howser, Joyce Jackson. THIRD ROW: Sharon Crum, Anne Whitney, Lucille Jenkins, Joyce Fisher, Geniece Clawson, Candy Barker, Diana Cyle, Pam Flaughner, Lane Johnson, Nancy Jobe, Katherine Keithley. FOURTH ROW: Sally Groth, Janet Clark, Meta Loetseke, Mary Lee Rohls, Norris Arnold, Connie Gracy, Becky Thacker, Lynne Mitchell. FIFTH ROW: Mary Wood, Marcia Jones, Charles Clark, Gene Hulse, Paul Schapp, Wally Groth, Gary Dawson, Larry McGill, Richard Knuch. SIXTH ROW: Bill Crigler, Donald Howren, Donald Richardson, Howard Millburn, Roy Crigler, Wayne Hlavacek, Ronald Richardson, Jeff Walte, Kenneth Hunt, Larry Deffenbaugh.

# Senior High Band

That they blow!



Backstage with the Senior Philharmonic.



FIRST R  
Cathy St  
Alpers, F  
Mary Wo  
Frederick  
Dolby, D  
Wood, R





All together now,  
1-2-3!



Piped-pipers of EHS.

Sinfle-this may be our last performance.

Sfist, along with Gerry!



## Mixed Chorus

FIRST ROW: Sharon Crum, Judi Thomson, Carolyn Peck, Cissy Ostgley, Donna Hegg, Karen Cutreance, Pam Flaughter, Virginia Bilyeu, Betty Shelton, Ella Dee Barris, Marcella Jones, Janet Clark, Corine Bellamy. SECOND ROW: Rose Maxie Rice, Penny Bailey, Bonnie Myers, Becky Thacker, Judy Kronk, Kay Curtis, Shirley Pace, Sherry Davis, Kathy Knoch, Diana Ople, Sandy Miles, Shirley Flaughter, Jerry Wood, Candy Barker, Sharon Dawson, Sally Groth. THIRD ROW: Frances Hees, Gay Helmer, Richard Beach, Bill Crigler, Dancy Colclinson, Kenneth Hunt, Charles Clark, Jeff Walte, Wayne Hlavacek, Walley Groth, Dennis Bond, Gene Ditts, Roger Hill, Hal Kelly, Dwain Sachs, Linda Rains. FOURTH ROW: Howard Milburn, Sam Upson, Bruce Hlavacek, Jim Sanning, Don Howren, Dennis Bond, Ronnie Jesse, Larry McGill, Larry Rice, Paul Zimmer, Roy Crigler, Gary Dawson, Larry Deffenbaugh, Bill Cooley.





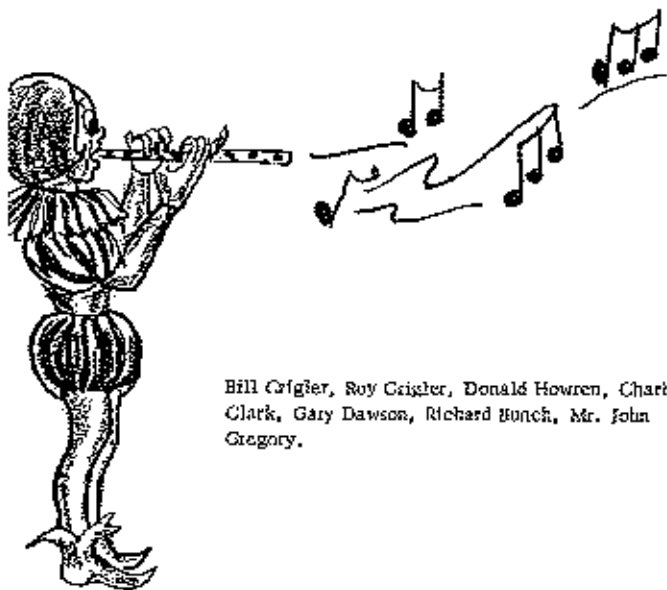
## Girls' Glee Club

FIRST ROW: Rose Marie Rice, Lynae Mitchell, Gladys Quigley, Donna Hogg, Norma Arnold, Connie Gracy, Virginia Dilyea, Pam Flaugher, Joan Gracy, Marola Jones, Sandy Miles, Christie Howser. SECOND ROW: Kay Curtis, Carolyn Peck, Judi Thomson, Sharon Crum, La Donna Martin, Cathy Shelton, Shirley Pace, Karen Curance, Meza Hoensteke, Janet Clark, Kathy Crane, Corine Bellamy, Cathy Frank, Mary Wood. THIRD ROW: Bonnie Alpers, Penny Bailey, Paula Mosher, Donna Vernon, Becky Thacker, Julieen Graue, Sherry Davis, Kathy Knoch, Carolyn Claxton, Ella Dee Bards, Linda Katus, Sharon Dawson. FOURTH ROW: Lovena Lewis, Gay Helmer, Frances Hees, Juanita Lake, Barbara Simmons, Candy Barker, Gertee Clawson, Sandy Maiden, Sally Groth, Diana Opic, Dianne Barhouse, Shirley Flaugher, Mary Lee Rolds, Janice McDaniel.

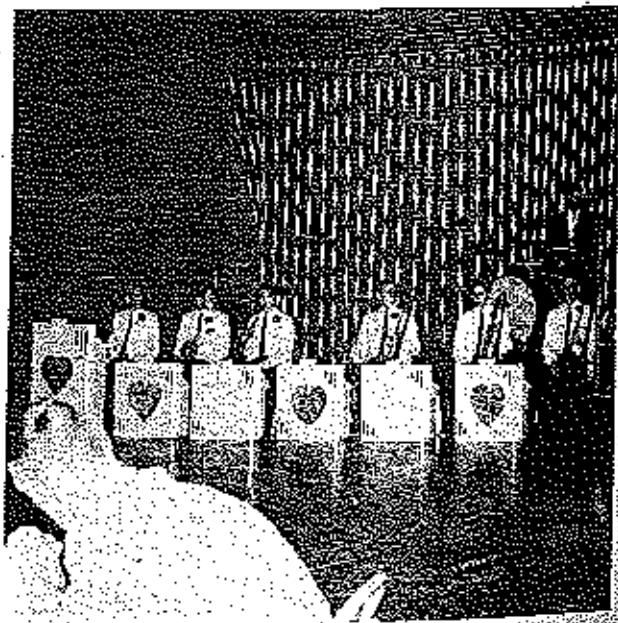


FIRST ROW: Izrett, SEC  
kinsod, Royce  
ard Milburn,  
Paul Zimner

## Sparkle Tones



Bill Grigler, Roy Grigler, Donald Howren, Charles Clark, Gary Dawson, Richard Bunch, Mr. John Gregory.





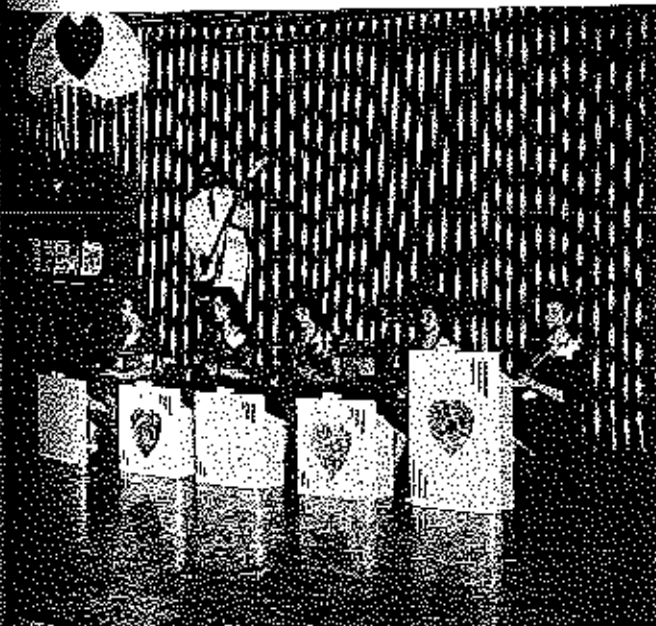
## Boys' Glee Club

**FIRST ROW:** David Vernon, Wayne Hlavacek, Jeff Waite, Gene Ditts, Larry Jarrett, Dennis Bond, Leroy Porter, Walley Groth, Barry Jureit. **SECOND ROW:** Donnie Howren, Dennis Wood, Kenneth Barr, Larry Jaffert, Larry McGill, Charles Clark, Larry Rice, Earl Atkinson, Roger Hill, Hal Dalby, Gary Small, Dwain Sachs, Bill Cooley. **THIRD ROW:** Sam Upton, Bruce Hlavacek, Jim Sanna, Howard Albani, Bill Crigler, Ronnie Jesse, Richard Blanch, Danny Fredrickson, Jimmy Ross, Larry Deffenbaugh, Gary Dawson, Roy Crighter, Bill Zimmerer.

Blyen, Pam  
 Ekman, Sharon  
 yna Bellamy  
 Julieen Crane  
 Lewis, Gay Helm  
 pie, Diana Ray

Sparkle

tones *not quite even*



Evelyn Lugardus, Leroy McGill, Louise Campbell, Candy Barker, Diana Opie, Nancy Jobe, Katherine Keithley.



FIRST ROW: Judi Thontson, Carol Stark, Karen Howser, Carol Dayton, Ayla Apperson, Pat Combs, Betty Ayers, Kay Curtis, Eva Hut-  
 ton, Carolyn Pock, Corine Bellamy, Rosemary Hader, Karen Currence. SECOND ROW: Mrs. Margaret Carlson, Sponsor; Judy Kronk,  
 Faye Winters, Laurel Smith, Barbara Kempker, Linda Pyle, Paula Mosher, Anna Martin, Vivian Scott, Sharon Leuthan, Christina Winters,  
 Esther Cooper, Marilyn Vann, Olga Rogalado. THIRD ROW: Shirley Flaughner, Sharon Dawson, Linda Davenport, Linda Andree, Vernice  
 Andree Ilalifinau, Helen Cooper, Karen Quick, Diana Hale, Ayonda Andrews, Judy Bowlin, Rauba Lake, Jean Hicks, Helen Schupp, La-  
 cille Jenkins. FOURTH ROW: Phyllis Boardman, Diana Porter, Jeannine Connett, Ruscann Berkstreger, Beverly Jones, Margaret Riffle,  
 Carolyn Roedel, JoAnn Duustau, Mary Kay Newton, Judy Jobe, Barbara Bearland, Linda Gier, Peggy Arnold, Bonnie Boatman, Rosie  
 Fwitcheil.



We are learning to be future homemakers.

We have to eat what we cook!



Make it shorter!  
 It's clean-up time.



FIRST ROW:  
 vid Jett, Ian  
 Fred Smock,  
 Tom Cotton,  
 Doug Camph



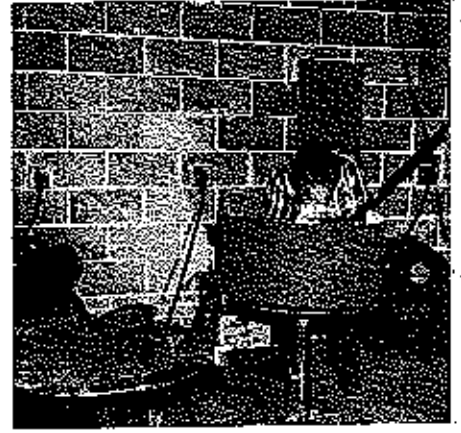


Curtis, Eva Hut-  
sor; Judy Kank,  
Christina Wilkins;  
a Andres, Verloce  
Islen Schupp, Le-  
Margaret Rfills  
stman, Rose



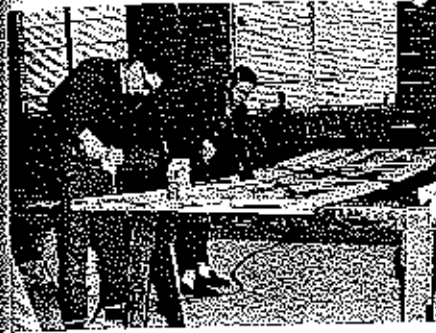
If we go again.

# Future Farmers of America



I'm trying to be hard at work.

We'll never get this done.



All these wires!

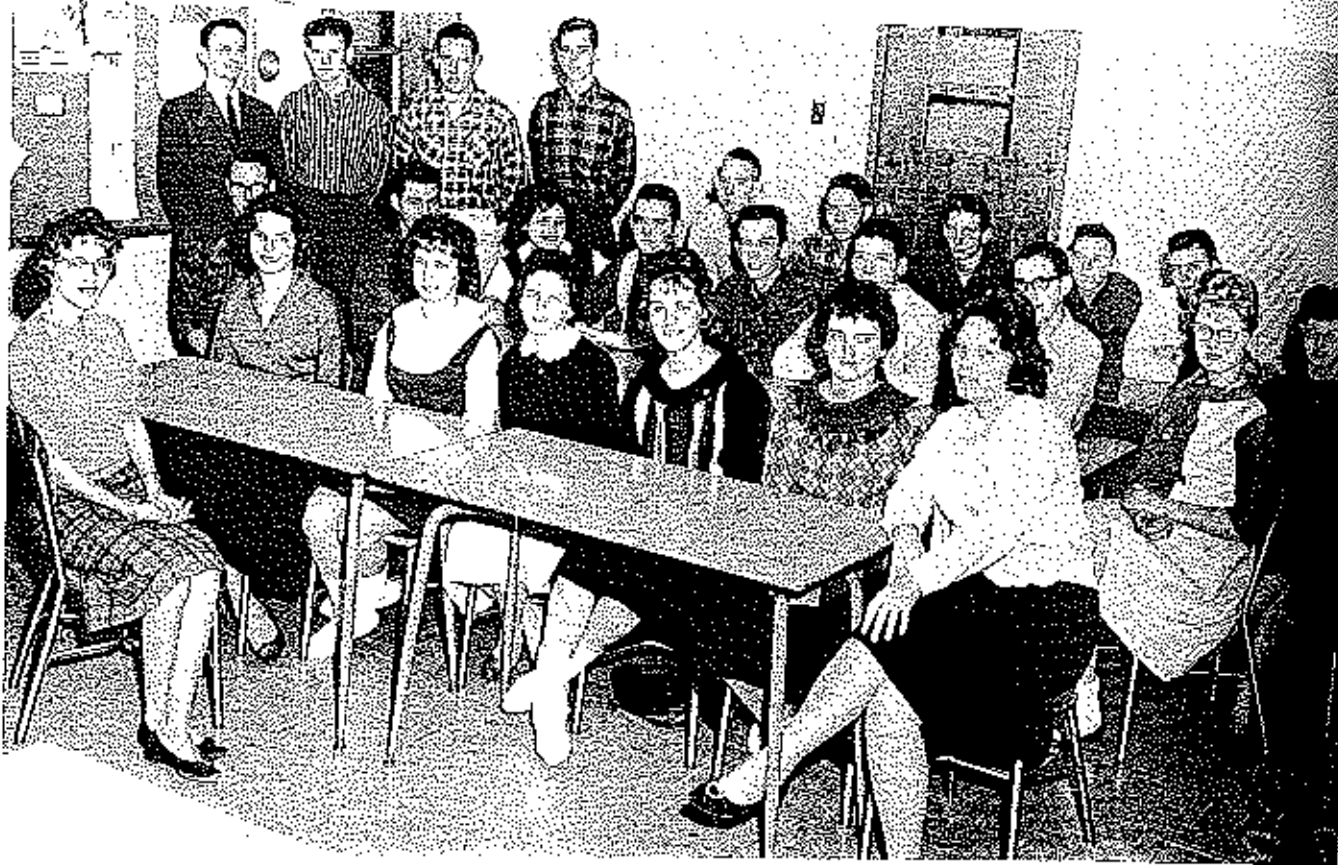


It's as clear as mud.



FIRST ROW: Leroy Potter, Russel Thorton, Billy Hibdon, Jimmy Baowski, Robert Kent, Henry Duffield, Paul Rowser, Chester Zuck, David Jett, Larry Morris, David Taylor. SECOND ROW: Mr. Clifford Greenway, Sponsor; John Schupp, James Bowlin, Freddie Blankenship, Fred Smock, Larry Basner, Robert Hayer, Jimmy Cotton, Donnie Bond, Curtis Atkinson, Victor Bunch. THIRD ROW: Richard Woods, Tom Cotton, Paul Vaughan, Kent Maher, Gordon Nichols, Jim Rhehart, James Cooper, Joe Rowland, Buddy Butler, J. W. Blankenship, Doug Campbell.





FIRST ROW: Donna Hoskins, President. SECOND ROW: Judy Shepherd, Mary Kay Newton, Beverly Brown, Margaret Bowden, Mildred Kains, Judy Hohl. THIRD ROW: Bob Evans, Richard Eidson, Judy Jobe, David Crane, Jim Sanning, Wyatt Bond, Roger Paul, Phyllis Scott. FOURTH ROW: Dale Jeffert, Curtis Tallman, Ronald Burets, Luther Hicks, Jim McLaughlin, Mary Ann Schuler. STANDING: Jessy Friesner, Sponsor; Raymond Hader, Bill Badley, How Duncan.



President is at work.

## Cooperative Occupational Education Club



Notes are forbidden.

OFFICERS--Donna Sue Hoskins, President; Judy Shepherd, Vice-President; Mary Kay Newton, Secretary-Treasurer; Beverly Brown, Parliamentarian.



We don't get paid for this work!



What sefer  
Rocks can

Hold that pe





Bowden Adams  
Fairy Faith  
STANDING



What scientific name can we give this?  
Rocks can be interesting!



Hold that pose,



Fenny Bailey  
Rose Marie Rice  
Barbara Callison



SEATH: Barry Jarrett, Gary Small, Mitchell Campbell, Mrs. Harbison, Dennis Martin, Dale Dunstan, Karl Golden, Elsel Drønson. SECOND ROW: Danny Frederickson, Al Jones, Earl Atkinson, Julian Crane, Susie Luke, Richard Bunch, Wally Groth. THIRD ROW: Mr. Wayne Barker, Sponsor; Larry McGill, Larry Rice, Dennis Bond, Mr. Roger McCroery, Sponsor; Mike Callison, Mr. Jim Guilford, Sponsor; Alyla Appetson, Gary Dawson, Roy Crigger, Dwain Sachs.

# Science



Want a shock?

# Club



# THE 5 PIANES



Mrs. Martha Nesbit,  
Sponsor.



FIRST ROW: Kathy Knuch, Sandy Miles, Mary Kay Newton, Corine DeHany, Penny Bailey, Meta Hoerncke, Kay Curtis, Janice McDaniel, Diana Porter, Cindy Outgley. SECOND ROW: Mrs. Sarah Brockman, Sponsor; Barbara Calloon, Rose Marie Rice, Janet Clark, Pam Flaughner, Carolyn Claxton, Sharon Dawson, Roseann Berkstrosser, Judy Johs, Judi Thomson, Judy Kronk. THIRD ROW: Miss Carol Weddie, Sponsor; Pat Combs, Betty Ayres, Gay Helmer, Lane Johnston, Nancy Proctor, Linda Pyle, Lovena Lewis, Paula Mosher, Mary Lee Rohls, Barbara Kempker, Joyce Pnavy. FOURTH ROW: Karen Howser, Sus Pyle, Marcia Jones, Carolyn Gier, Joan Gracy, Linda Gier, Loretta Berkstrosser, Darlene Hengenfritz, Karen Curcio. FIFTH ROW: Margaret McBroom, Liula Rafns, Rosemary Hader, Sherry Davis, Cathy Shelton, Ella Dee Burris, Judy Shepherd, Suzanne Shepherd. SIXTH ROW: Carolyn Peck, Julieen Crane, Bonate Alpers, La Hurna Martjn, Christie Howser, Cathy Frank, Conale Gracy, Arlene Cotrence. SEVENTH ROW: Becky Thacker, Carol Stark, Sandy Malden, Nancy Jobe, Diana Opte, Barbara Stimmens, Susie Lske. EIGHTH ROW: Lyott Mitchell, Diane Dainhouse, Geniece Clawson.



Ht 'em a heck!



We are the Campfire girls.

## Pep Club

PEP CLUB OFFICERS--Marcia Jones, Janet Clark, Diana Opte.



FIRST  
Notis  
Scott,  
THIRD  
Richard  
ROW:  
George

Ler's win  
President  
etary Goc



"E" CLUB

FIRST ROW: Paul Vaughan, Bruce Slavacek, Ronnie Jones, Norris Henley. SECOND ROW: Bob Campbell, Myron Scott, Charles Taylor, Mike Mulcahy, Delbert Hayes. THIRD ROW: Ronald Richardson, Bill Nowack, Donald Richardson, Bob Waltersheide, Richard Claxton. FOURTH ROW: Sam Upton, Larry McGill, Robert Gattermeir, George Parkus.



Don't laugh, your turn's next.

## Athletes Win Letters

Willing to go in???

...win another one!  
President Mike Mulcahy, Vice-President Don Richardson, Secretary George Parkus.

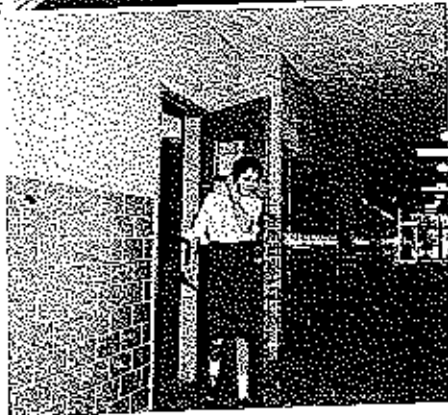
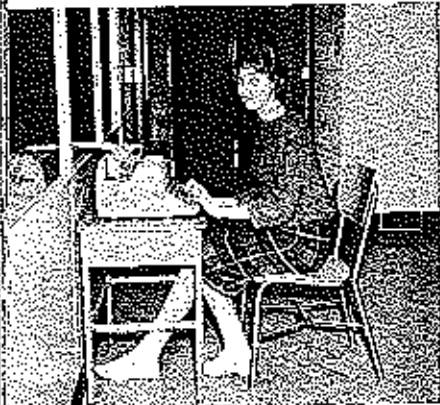




## Office Workers

FIRST ROW: Frances Hees, Bonnie Alpers, Kay Curtis, Phyllis Scott, Carolyn Claxton, Beverly Brown, Corine Bellamy, Mary Ann Schuler, Linda Rains, Barbara Calhoun. SECOND ROW: Vivian Scott, Darlene Hegenfritz, Kathy Knoch, Penny Bailey, Judy Knoch, Ray Hoover, Judy Holt.

Cops! A goof!



Making the rounds.



Someone's slipped again.

## Library Staff

### FRONT ROW

Alvia Apperson  
Sharon Crum  
Jane Johnston  
Peggy Polly  
Mrs. Ruth Lupardus

### SECOND ROW

Earl Goldcu  
Bob Evans  
Earl Atkinson  
Jim Rinchart  
Nessis Arnold



You study while I hold the book.



Who owes the most?



Check-out time.

Shan  
Bart  
Virg  
Pear  
Mik  
Mrs.

MARCOO  
REFES

Finally :

larkers

Frances Hees, Bon-  
Jetta, Phyllis  
Anson, Beverly  
Hamy, Mary  
La Raine, Bar-  
BOND ROW  
lene Hgenfils,  
my Bailey,  
Jovner, Judy

Publications Class

Sharon Dawson, Shirley Flaughter,  
Barbara Calhoun, Kathy Knock,  
Virginia Blyou, Frances Hees,  
Penny Bailey, Rose Marie Rice,  
Mike Mulcahy, Carolyn Claxton,  
Mrs. Sarah Brockman, Sponsor.



The page packers.



ged again.



Rose Marie Rice  
MAROON AND GOLD Editor  
REFERET Assistant Editor



Barbara Calhoun  
REFERET Editor  
MAROON AND GOLD Assistant Editor



Penny Bailey  
REFERET Assistant Editor  
MAROON AND GOLD Business Manager



Frances Hees  
REFERET Art Editor  
MAROON AND GOLD Art Editor



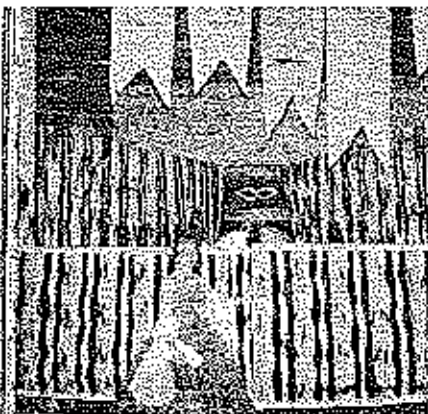
Do you want my glue or my idea?



Dummies are due Monday.



The REFERET, the way we know it.



Come enter the gates to  
Mardi Gras.



We could have danced all night.



Success achieved at last.

To think we have to tear this down.



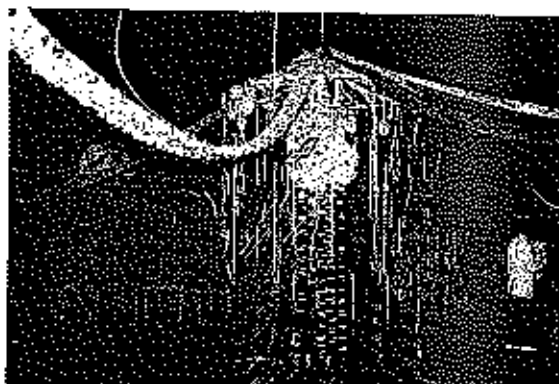
This was only the beginning.



## Mardi Gras Sets Mood For Prom Gaily



Wandering along the streets of Mardi Gras.



Let's get this show on the road.

Promanaders on parade.



Swing along with Mitch?



Wc'



aved at the



The old with the new.

$$a^2 + b^2 = c^2$$



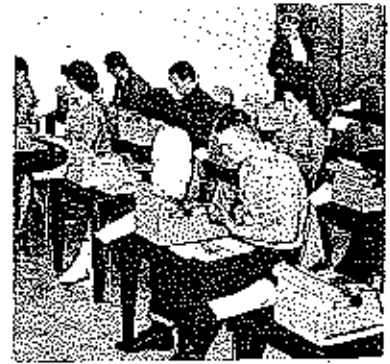
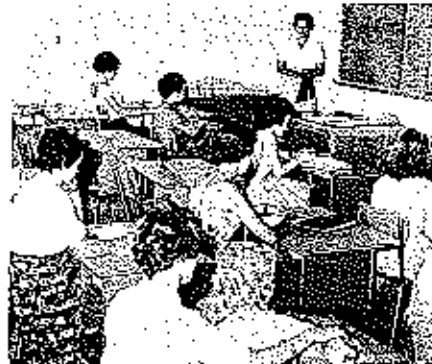
Eager beavers.

This is Greek to me!



! Hoia !

We make nothing but mistakes!



Confucius Say

"Put Nose To Grindstone"

*It's all  
over here*



Let's get on with the discussing.

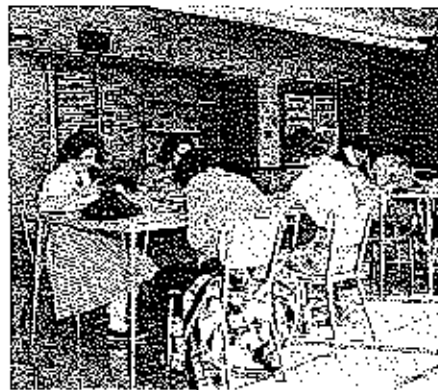


Bravo, Speech!

We've never felt so stupid.

We can't even draw a straight line!

On the beaten path.



(th Mill?)





Don't step on that mouse,  
Go you guys!

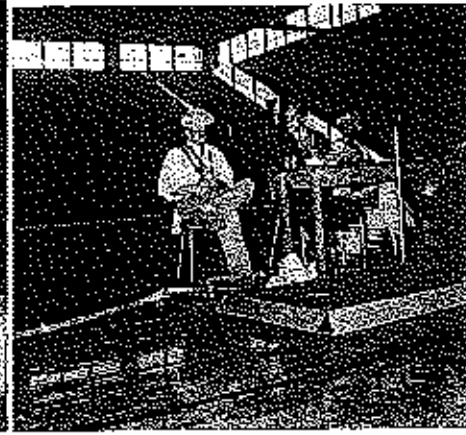
May we help you?



California, here we come.  
Step Lightly.  
Charlie, Jack, and Zssa.

# Excitement Reigns

D  
u  
r  
i  
n  
g



T  
H  
S

# Homecoming



Just like a rag doll,  
I forgot to bring a footstool.  
The lineup.

Queen Corine and escort.





It's party time.



Beauty seeks knowledge.



Corine Bellamy  
Homecoming Queen 1961-62



I crown you. ....

HOMECOMING ROYALTY

Pam Flaughz, Judi Thomson, Ouzon Corras, Judy Jobe, Sharon Dawson.



ement

gas

1  
t  
i  
t  
3

1 S

oming



Good morning,  
World!

I bet even  
Shakespeare  
was hand-  
some.



Tardy again.



## Judi Thomson

### Queen of Popularity and Beauty

FAJL FESTIVAL ROYALTY--Nancy Procter, Freshman Maid; Diana Opie, Sophomore Maid; Hazel Jobe, Herald; Dianna Porter, Junior Maid; Sharon Dawson, Princess; Queen Judi, Roseann Beristresser, Princess; Connie Gracy, Junior Maid; Debbie Juler, Herald; Pat Conley, Sophomore Maid; Linda Gier, Freshman Maid.



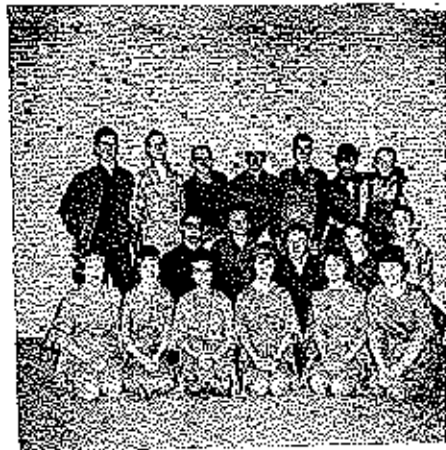
no  
The  
"Rom  
H





These Were Our  
 "Great Moments in  
 History" (B)

and morning,  
 cold!



"The Golden Spike"  
 Ugh!



"Like Westward Ho"  
 Where are the Indians?



na Porter, Hitler  
 Herald; Pat Gomb...



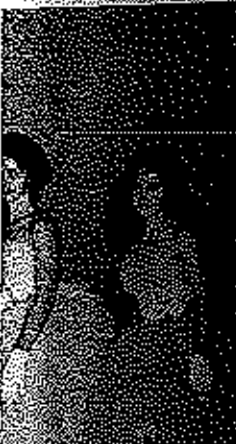
"Cleopatra"  
 This is the life.  
 "Romeo and Juliet"  
 How funny!



"Paula Revere's Ride"  
 IH-Ho Silver!

"Hartfield and McCoy Feud"  
 Please Pat!

"Pocahontas and Captain Smith"  
 Now is the hour!

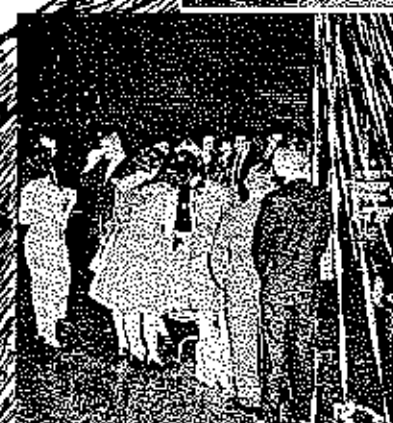


WE WISHED

ALL

MERRY

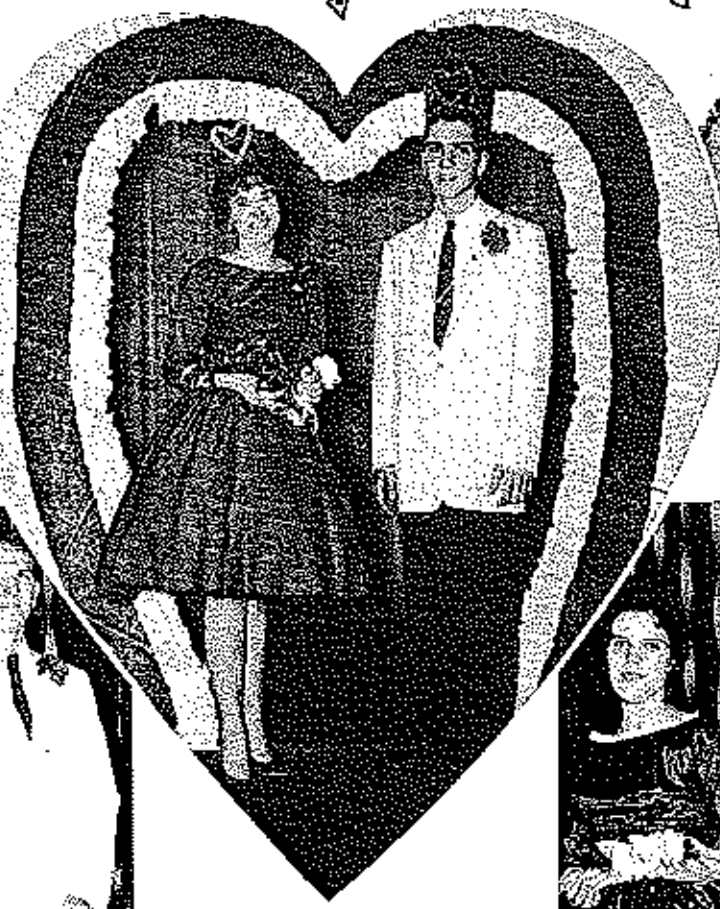
CHRISTMAS



Mrs. *Delbyke*  
*Leaves*  
**CHRISTMAS**



Sharon Dawson  
Queen of Hearts



Sam Utson  
King of Hearts



Kathy Knuch, princess  
Ronnie Jesse, prince

Cupid's Spirit  
 Prevailed  
 At The  
 Heartthrob  
 Ball



Carolyn Claxton, princess  
Dow Duncan, prince

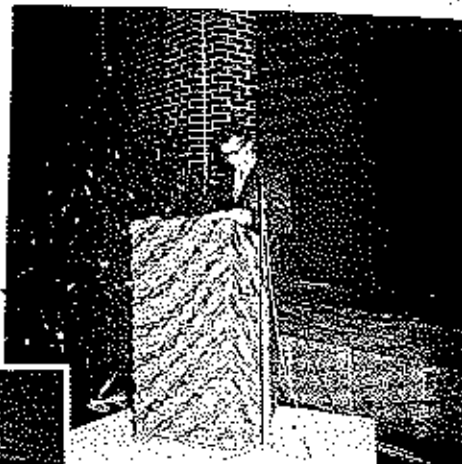




What's so interesting--the girl or the speech?



'This chorus doesn't sing.



"And it came to pass..."



Alert thespians?



Kill me Rebl



Which character do you want this time?

Speech

She has two faces.

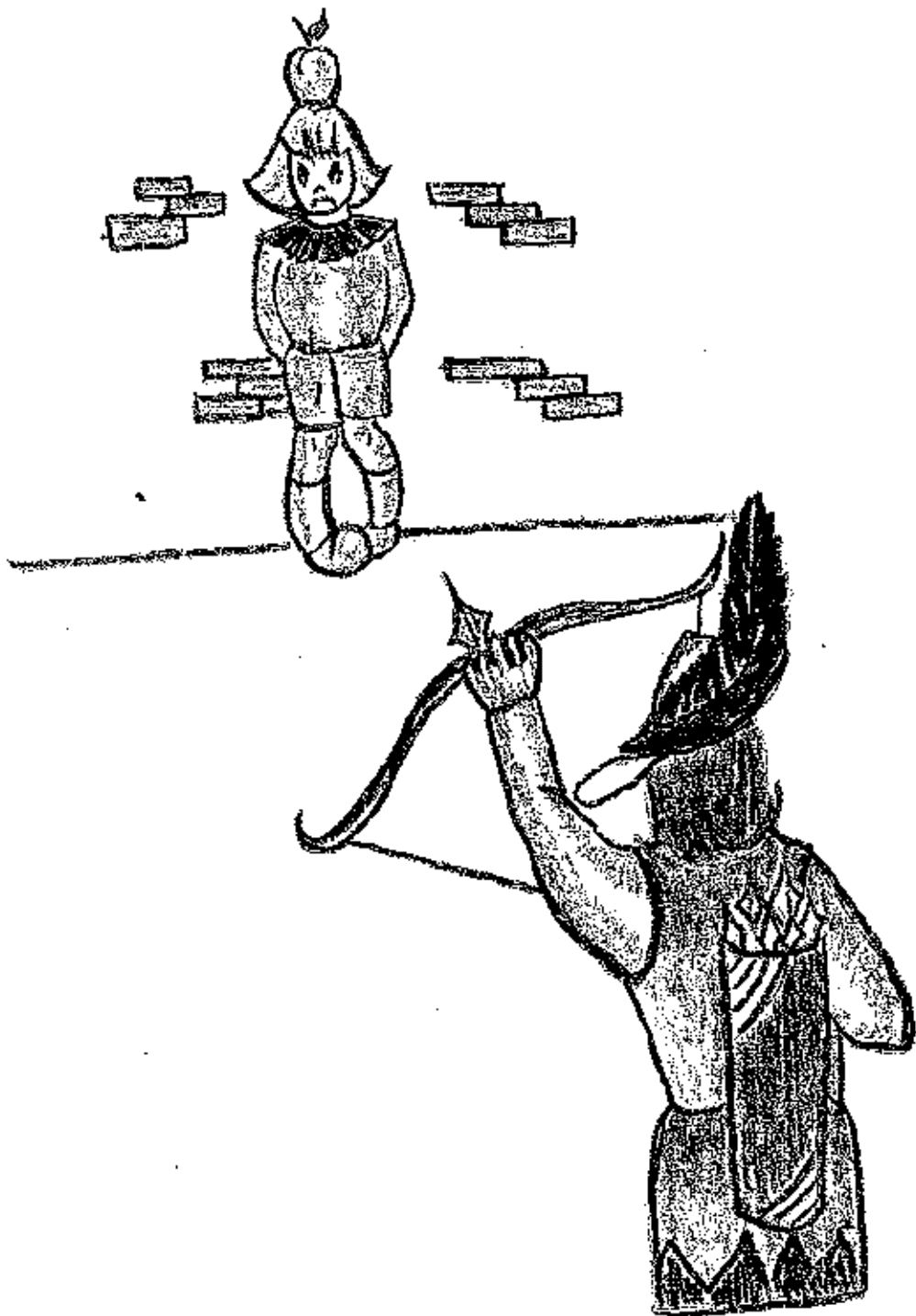


and



Dramatics

Get off my face, Smilly!



# SPORTS

at this time

amatics

face, Emily



FIRST ROW: Myron Scott, Bruce Hlavacek, Charles Taylor, Mike Mulcahy, Paul Vaughn, Bill Nowack, Donald Richardson, Francis Vernon. SECOND ROW: Bob Campbell, Ronald Richardson, Charles Clark, Mike Pyle, Richard Claxton, Delbert Hayes, Roy Craigler, Jerry Haguenan, Bill Evans. THIRD ROW: George Parkins, John Doolin, Ronnie Jesse, Howard Wolfe, Bob Yaws, Howard Misburn, Bill Hall, Robert Gattermeit, Norris Henley. FOURTH ROW: Roger Hill, Gary Carcader, Mike Burris, Victor Bunch, Gary Small, Wayne Hlavacek, Dan Hlawicki, Tommy Cantwell. FIFTH ROW: Doug Campbell, Russel Thomas, Jim Brohannan, Larry Deffubaugh, Hal Dolby, Al Jones, Bill Hodges, Dwain Sachs, Timon Rains. SIXTH ROW: Coach Clatus Helms, Sammy Clawson, Roger Fads, Bobby Bishop, Coach Ed Hodges.



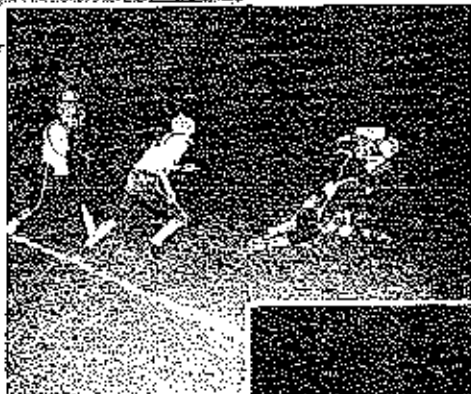
Charge!

## Football Squad

Watch it!



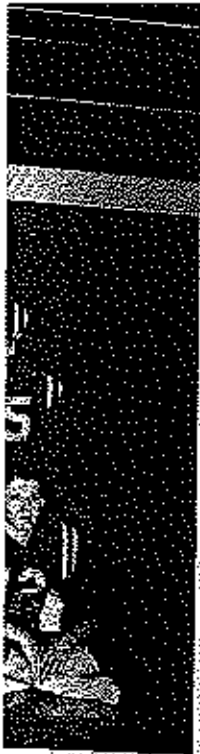
Rear (ing)



Last play  
for Ronnie.



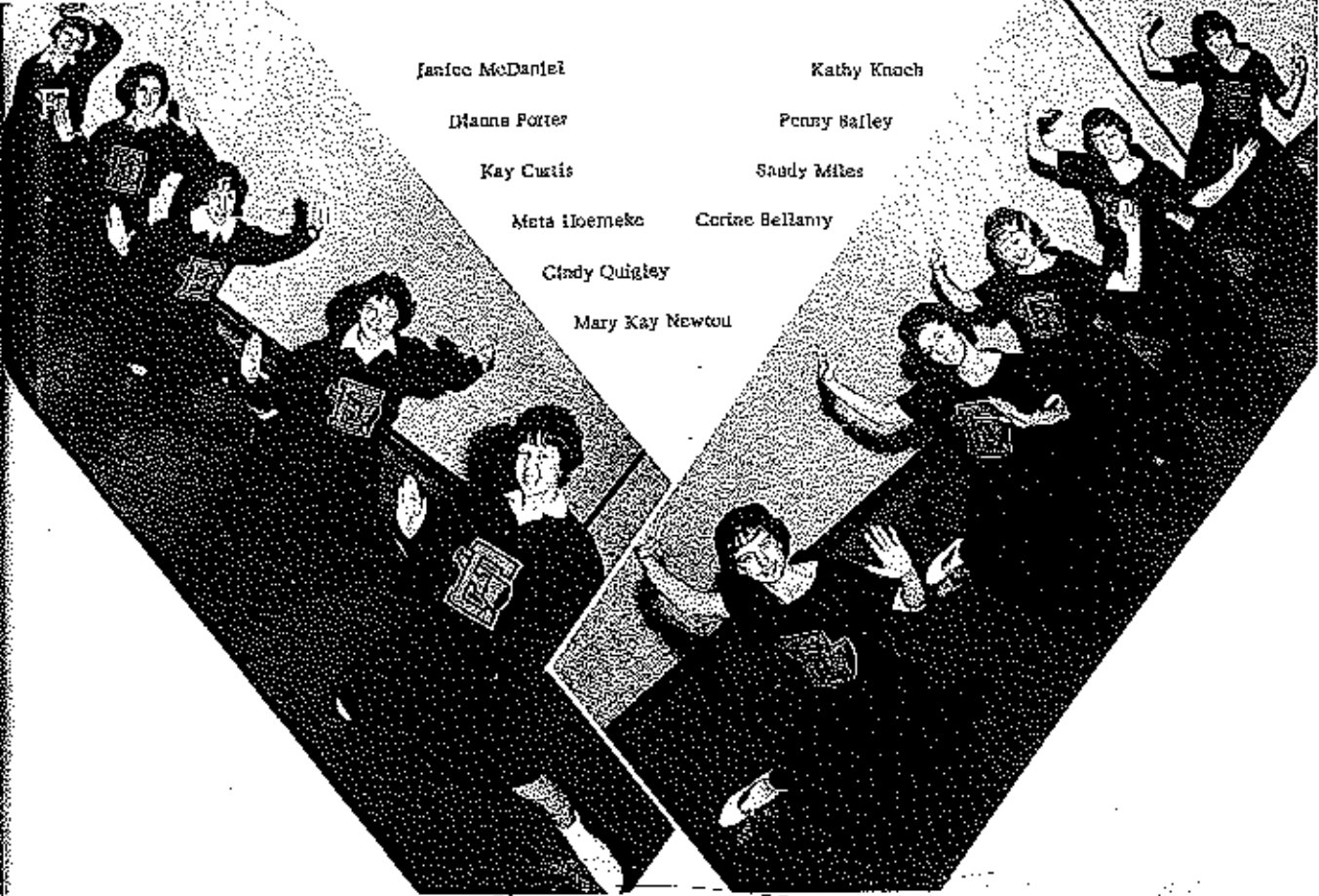
Now Run!



Francis Ver-  
 ichter, Jerry  
 u, Bill Hall,  
 /na Hlavacek,  
 Dolby, Al  
 shop, Coach



ast play  
 r Rotatie.



Janice McDaniel

Kathy Knuch

Dianna Porter

Penny Bailey

Kay Curtis

Sandy Miles

Meta Hoemeke

Corine Bellamy

Gindy Quigley

Mary Kay Newton

A AND B TEAM BASKETBALL CHEERLEADERS

A TEAM FOOTBALL CHEERLEADERS

FIRST ROW: Mary Kay Newton, Sandy Miles. SECOND ROW: Penny Bailey, Margaret Neth, Linda Brockman.





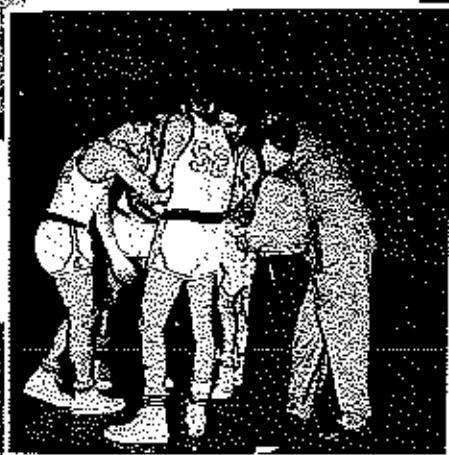
STANDING: Ronnie Jasse, Jerry Henley, Bruce Hlavacek, Sam Upton, Bill Nowack, Coach Clotis Helms, Myron Scott, Don Richardson, Bob Campbell, Mike Mulcahy, Ronald Richardson, Morris Hunt. KNEBLING: Robert Gattermeir, Wayne Hlavacek, George Parkins, Hal Dolby, Bob Waitersheid, Managers.



What's my trainers?

Who's got the best team in the land?

# A Basketball Team

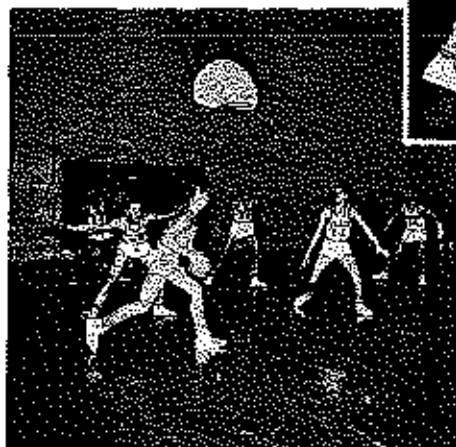


We gotta win this one!



Get out of my way, please.

Let's twist again!

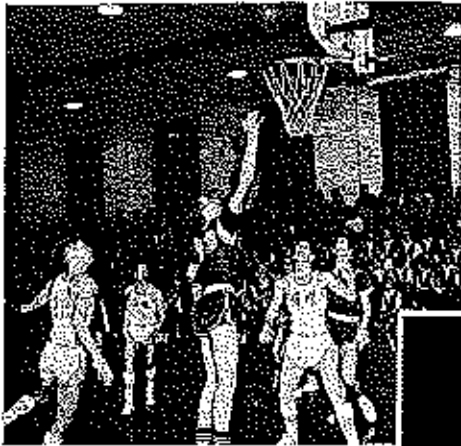






STANDING: Roger Hill, Charles Clark, Howard McBurn, Richard Busch, Bill Cooley, Mike Pyle, Coach Ed Hodges, Richard Claxton, Larry McGill, Norris Heuley, Delbert Hayes, Gary Cavender, Roy Crighter. SEATED: Charles Taylor, Robert Gattermeir, Wayne Hlavacek, Ibai Dolby, George Parkins, Gary Witt, Managers.

# B Basketball Team



Hey! Two.

Let's yell a little louder.



It looks like another basket.

Orders from the easy chair.



Casey strikes out.



ASC



SENIOR HIGH VOLLEYBALL--Coach Carol Weddle,  
 SECOND ROW: Margaret Bowden, JoAnn Dwanston, Bar-  
 bara Simmons. THIRD ROW: Connie Wallis, Shirley  
 Pace, Carolyn Roedel. FOURTH ROW: Mary Kay New-  
 ton, Judy Shepherd, Sue Thomason. FIFTH ROW: Mar-  
 cia Jones, Carol Tracy.



This one is mine.

Girls Gain Athletic



Over the net!

JUNIOR HIGH VOLLEYBALL--Carol Tracy,  
 Marcia Jones, Managers. SECOND ROW: Gay  
 Helmer, Dianna Barnhouse. THIRD ROW:  
 Lovena Lewis, Sally Flora. FOURTH ROW:  
 Geniece Clawson, Janice McDaniels, Coach  
 Carol Weddle.



Veddie,  
ustan, Bar-  
i, Shirley  
y Kay New-  
ROW: Mar-

SENIOR HIGH SOFTBALL.--FIRST ROW: Coach Carol Weddle, SECOND ROW: Myrna Crum, Corine Bellamy, Diane Porter, THIRD ROW: Donna Varmon, Connie Walls, Connie Czacy, FOURTH ROW: Diana Opte, Susie Luke, Barbara Simmons, FIFTH ROW: Karen Carrence, JoAnn Denstan, Marcia Jones, Manager.



Girls Gain Athletic Skills



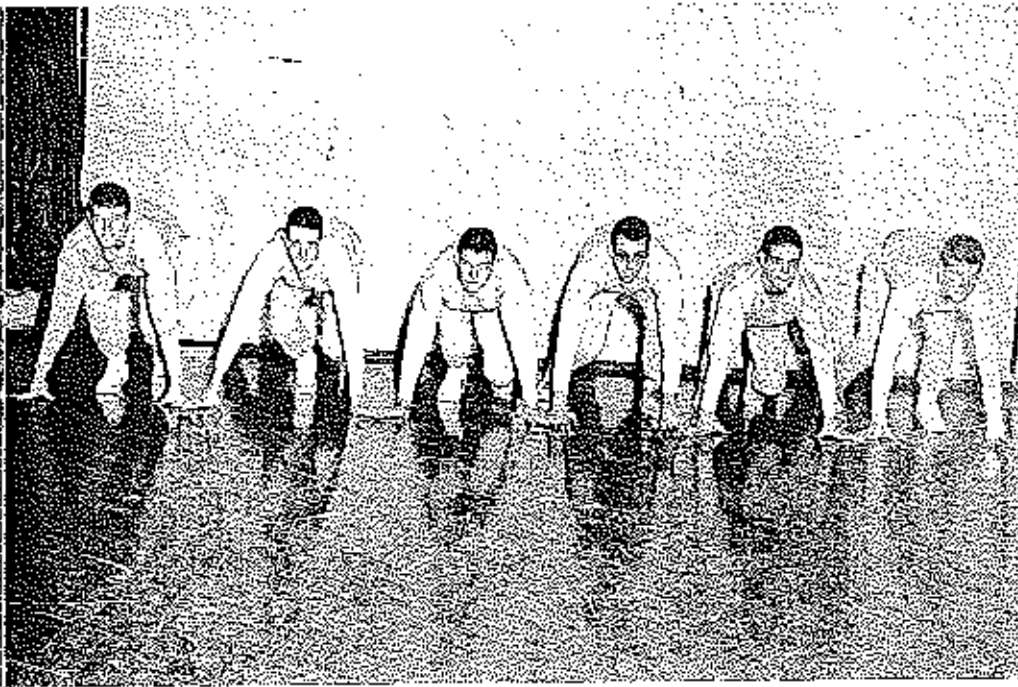
Let's see how far you can hit it.



What's the attraction?



JUNIOR HIGH SOFTBALL.--FIRST ROW: Lynne Mitchell, Diane Barhouse, Janice McDaniel, SECOND ROW: Meta Hoemeke, Cathy Frank, THIRD ROW: Geniece Clawson, Juleen Crane, Marcia Jones, Manager, FOURTH ROW: Coach Carol Weddle.

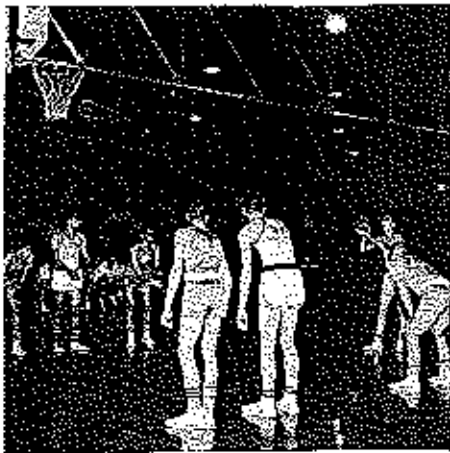


1961 TRACK LETT'ERMEN--Let's run 'em,



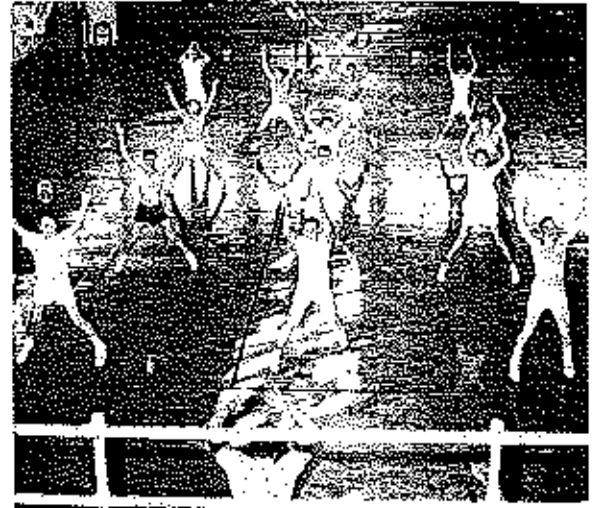
It's refreshment time.

Lay-off Coach, we're tired.



Concentration!

They  
Mark  
Toward  
Physical  
Fitness



THE CHAIN GANG--Romie, BJL, Donald, Mike, Bruce, Bob.

It looks like another basket.



# The Olde Cut-Ups

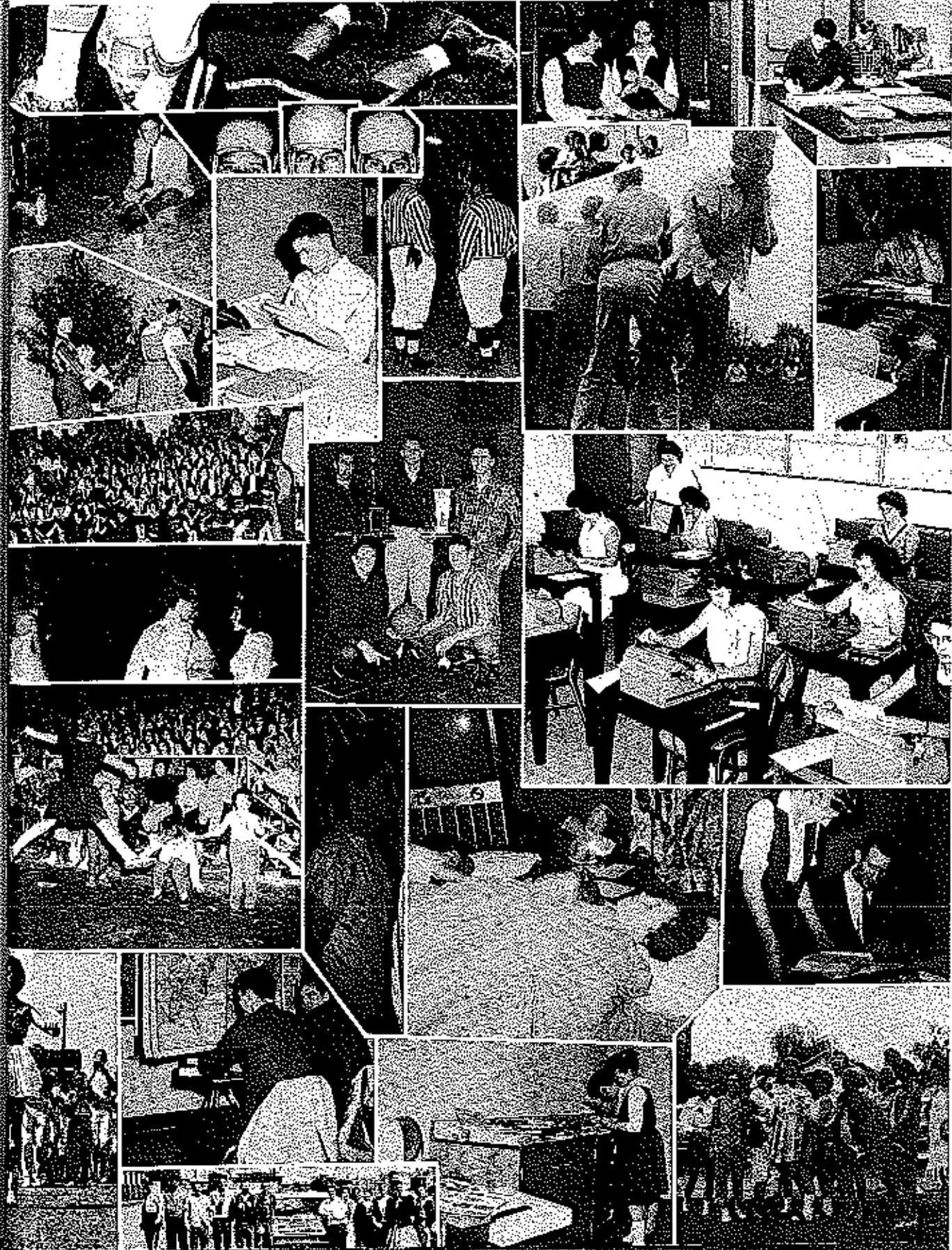


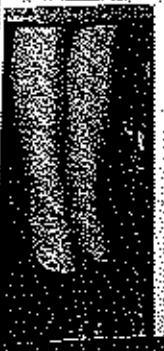
rent time.

2, we're tired.



Bob.





# Can You Remember

The  
Class  
We  
All  
Liked . .



The Fun We All Had



The Door We All Sought  
At The End Of A Day. . . And The Look

On Mr. Clawson's  
Face When We  
Finally Left.

WHAT'S  
All

