

1964

Eldon High School

Ref 001 Ref
Eldon High School. Referat 1964.



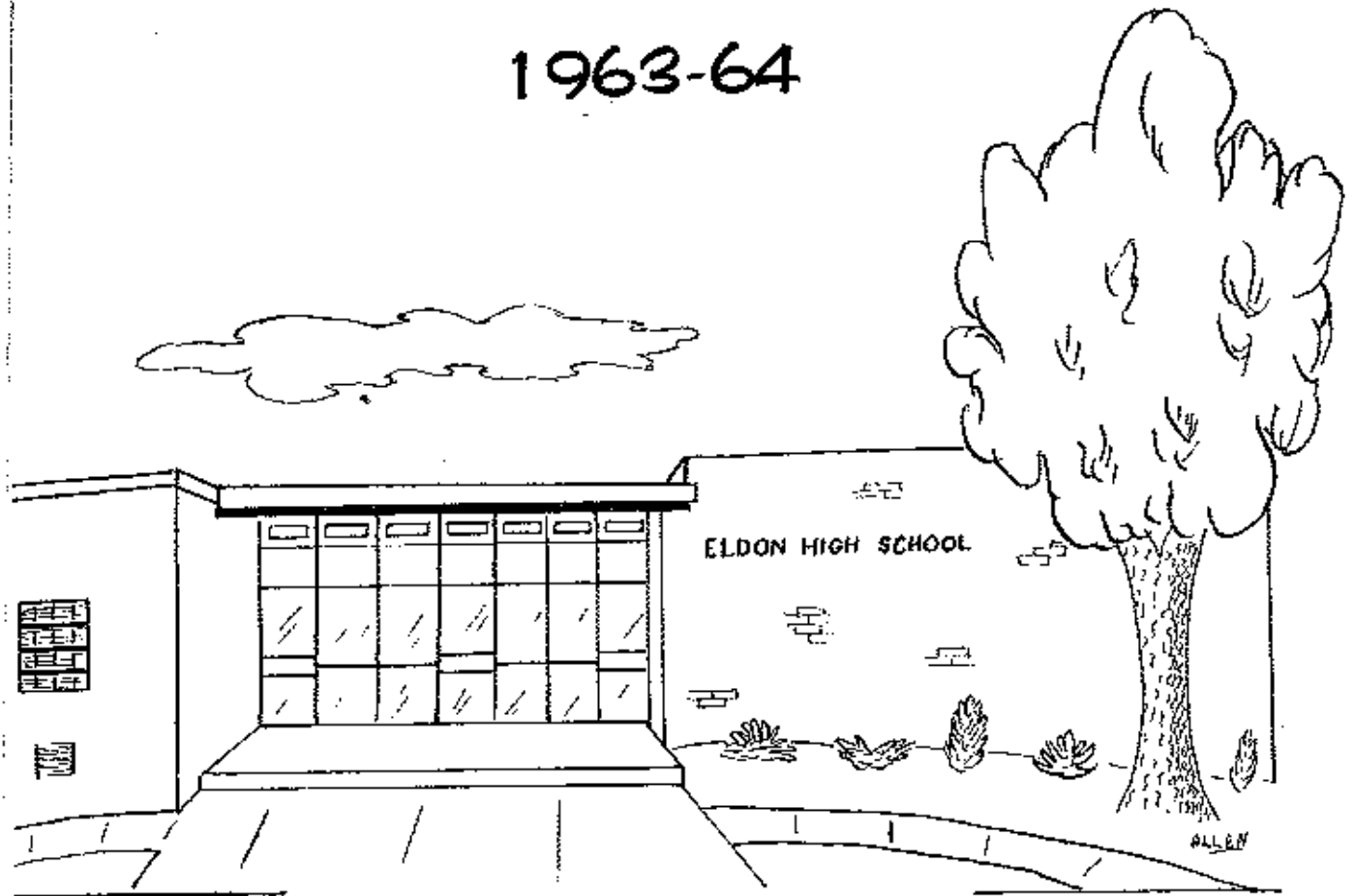
T 20971



REFERET

REFERET

1963-64



ELDON HIGH SCHOOL

Karen Currence Sparks

Editor

SCHEDULE OF EVENTS ELDON HIGH SCHOOL 1963-1964

SEPTEMBER

- 3--First Day
- 13--Football--Boonville
- 20--Football--Camdenton
- 24--F.H.A. Regional Meeting--Rolla
- 27--Football--Versailles

OCTOBER

- 4--Football--Waynesville
- 11--Football--Tipton
- 18--Homecoming
- 24--College Night
- 25--Football--California

NOVEMBER

- 1--Football--Fayette
- 7-8--State Teachers Meeting (Vacation)
- 11--Tri-County Student Council Conference
- 23--Fall Festival
- 25--Vocal Clinic--Camdenton
- 28-29--Thanksgiving

DECEMBER

- 2-7--Tipton Tournament
- 10--Basketball--California
- 13--Basketball--Versailles
- 14--F.H.S. Christmas Party
- 17--Basketball--Camdenton
- 20--Basketball--Eugene
- 20--Jan. 2--Christmas Vacation

JANUARY

- 6-10--Versailles Basketball Tournament
- 17--End of First Semester
Basketball--Russelville
- 18--Three-Act Play "One Foot in Heaven"
- 20--Band Clinic--Iberia
- 21--Basketball--Hollis
- 24--Basketball--Stover
- 27-31--Eldon Invitational Basketball Tournament

FEBRUARY

- 4--Speech Night
- 5--Tri-County Speech--Iberia
- 7--Basketball--Tipton
- 11--Basketball--Iberia

FEBRUARY (Cont.)

- 14--Basketball--California
- 18--Basketball--Boonville
- 20--Band Clinic
- 21--Basketball--Osage
- 22--F.F.A. Parent-Son Banquet

MARCH

- 2-6--Class L. Regional Basketball Tourn.
- 7--Tri-County Music Festival--California
Industrial Arts Roundup--Warrensburg
- 12-13--M.A.S.C. State Meeting--Columbia
- 14--F.H.A. Banquet
- 17--One-Act Plays
- 20-21--District Music Festival--Rolla
- 23-24--C.O.E. Convention

APRIL

- 1--F.F.A. District Meeting--Warrensburg
- 3-4--District Speech--Rolla
- 14--Track--California & Versailles
- 16-17--F.F.A. Convention
- 18--C.O.E. Banquet
- 24-25--State Music Festival--Columbia
- 28--Track--Camdenton & California

MAY

- 1-2--State Speech & Debate
- 5--Tri-County Track--Versailles
- 7-8--Spring Show
- 9--District Track--Jefferson City
- 14--Dramatics Club "Oscarette Banquet"
- 15--State Track
Open House--Arts, Science & Home Ec.
- 21--"E" Club Dinner
- 22--Awards Assembly
- 23--Junior-Senior Prom & Banquet
- 24--Baccalaureate
- 25--Senior Dinner
Senior Assembly
Commencement
- 29--Last Day of School

TABLE OF CONTENTS

ADMINISTRATION	Page 5
STUDENTS	Page 11
ROYALTY	Page 43
ACTIVITIES	Page 49
ORGANIZATIONS	Page 65
SPORTS	Page 83
DEPARTMENTS	Page 91

REFERET STAFF

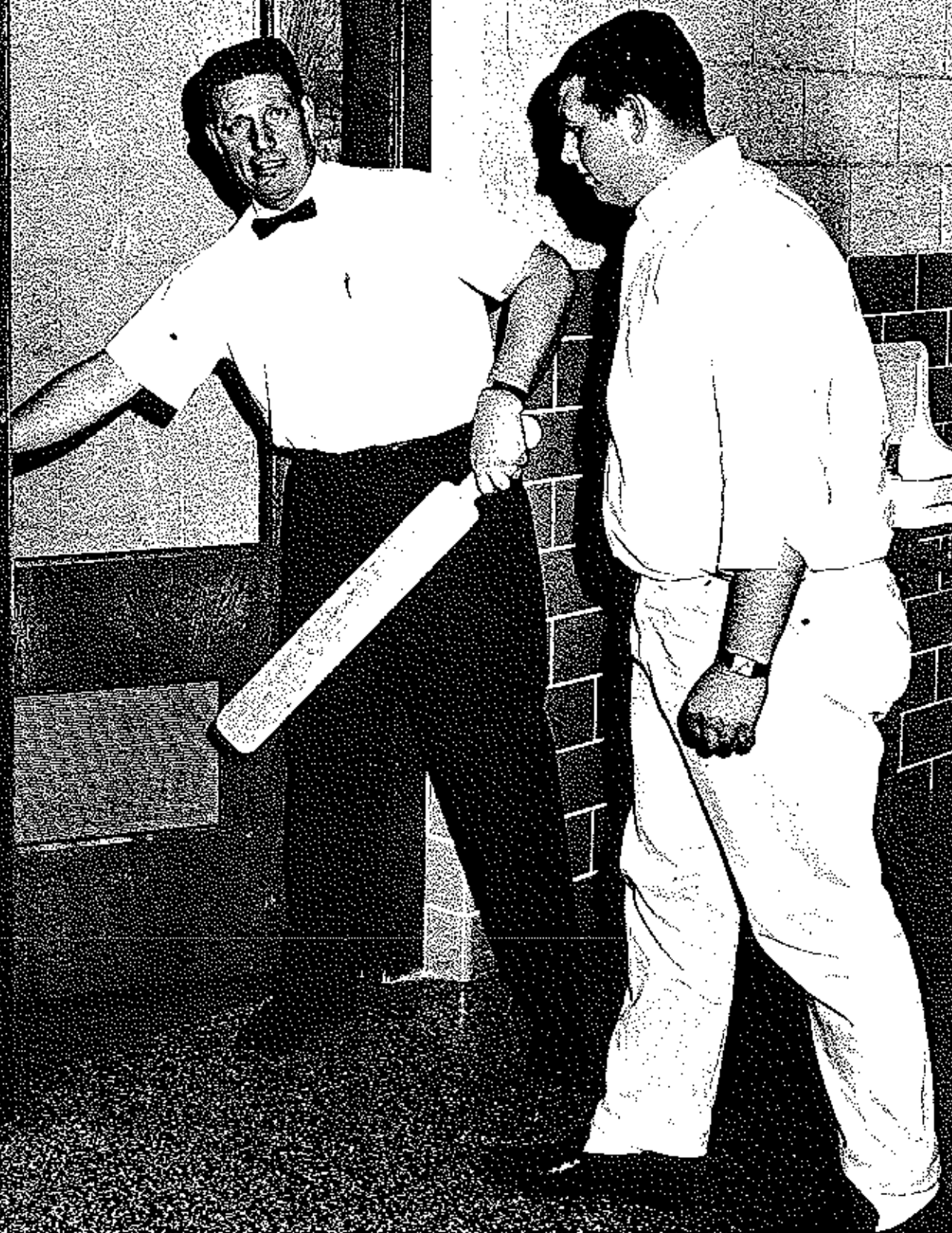
Karen Currence Sparks	Editor
Lane Johnston	Assistant Editor
Joyce Allen	Art Editor
Danny Frederickson	Sales Manager
Sammy Clawson	Photographer
Kay Curtis	
Linda Gier	
Marilyn Jobe	
Eva North	
Miss Beverly Schepeler	Sponsor

BOARD OF EDUCATION



Roseue Denny, Boyd Clark, Doris Milburn, Secretary, Oran D. Clawson, President, Louie Apperson, Vice-President, Emmett Daistun, Harold Clotworthy.

ADMINISTRATION





Mr. Lyle D. Hensley
Superintendent of Schools



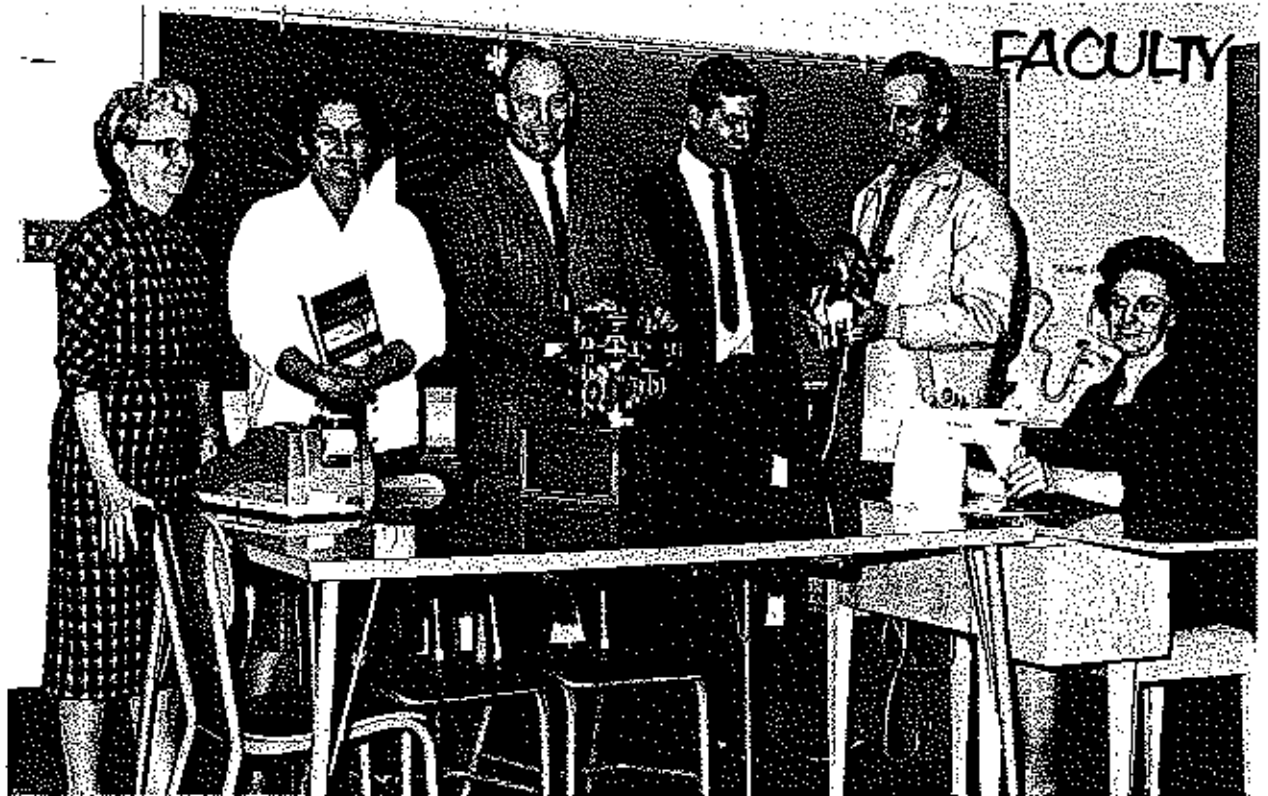
Mrs. Maxine Shaw
District Treasurer
Mrs. Madie Denny
Supervisor
Mrs. Doris Milburn
Secretary to the Superintendent



Mr. Sam D. Clawson
Principal



Mrs. Pat Norfleet
Secretary to the Principal



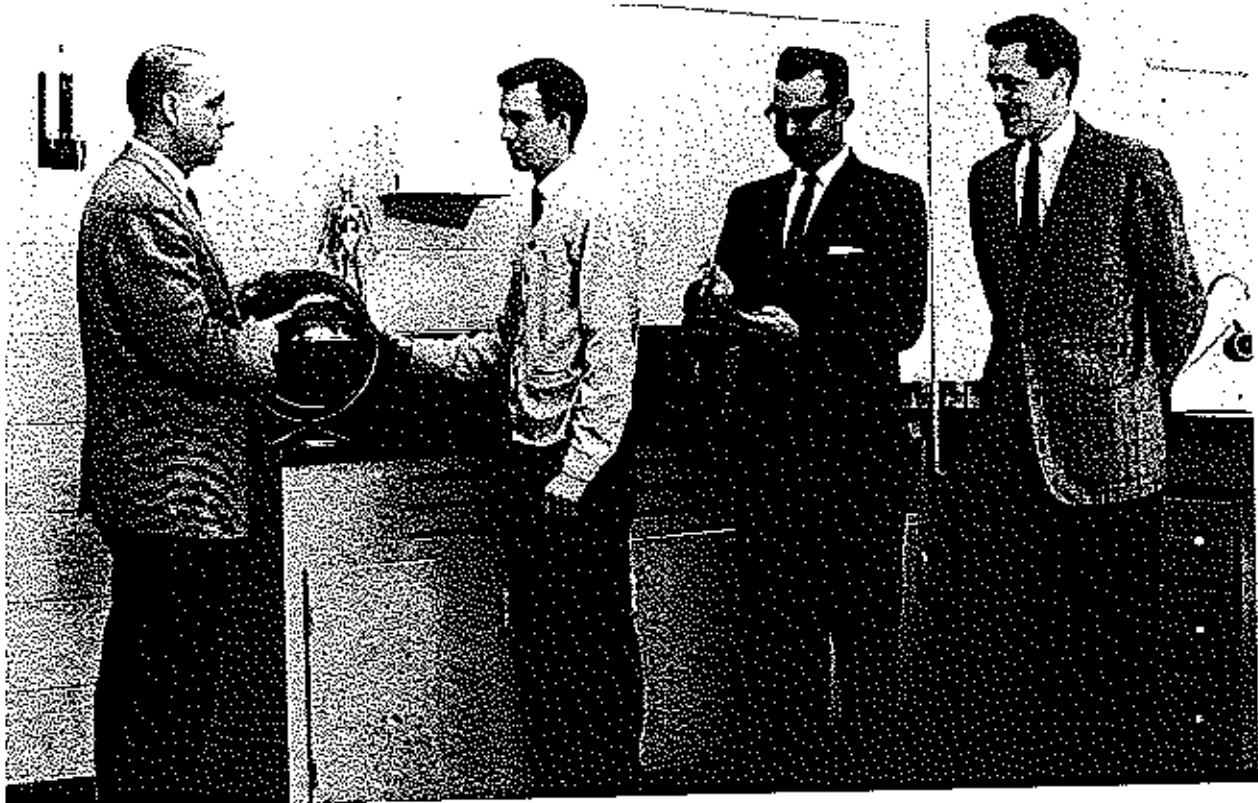
PRACTICAL ARTS

Mrs. Eunice Stephen, Commerce; Mrs. Gladys Helm, Commerce; Mr. Cluyd Shea, Shop; Mr. John Murphy, Shop; Mr. Clifford Greenway, Voc. Agriculture; Miss Estaline Hunziker, Home Economics.



LANGUAGE ARTS

Mr. Jim Ward, English, Dramatics, Speech; Mrs. Jesse Atkinson, English; Mr. Jim Christal, Spanish; Mrs. Kay Scott, English, Psychology; Mr. William Sachs, English.



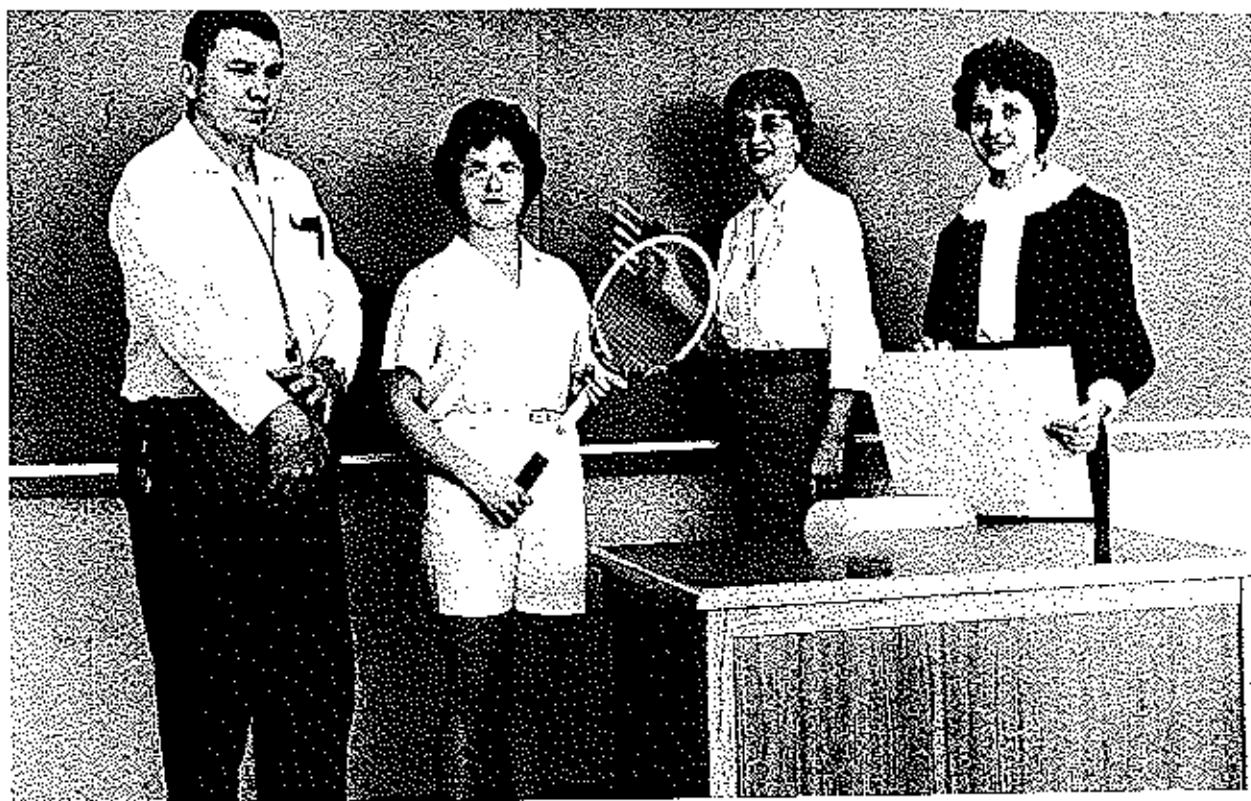
MATHEMATICS and SCIENCE

Mr. Jim Crainger, General Science, Space Science; Mr. David Allen, Algebra, Geometry; Mr. Larry Hess, Physics, Algebra; Mr. Jim Guilford, Biology, Chemistry.



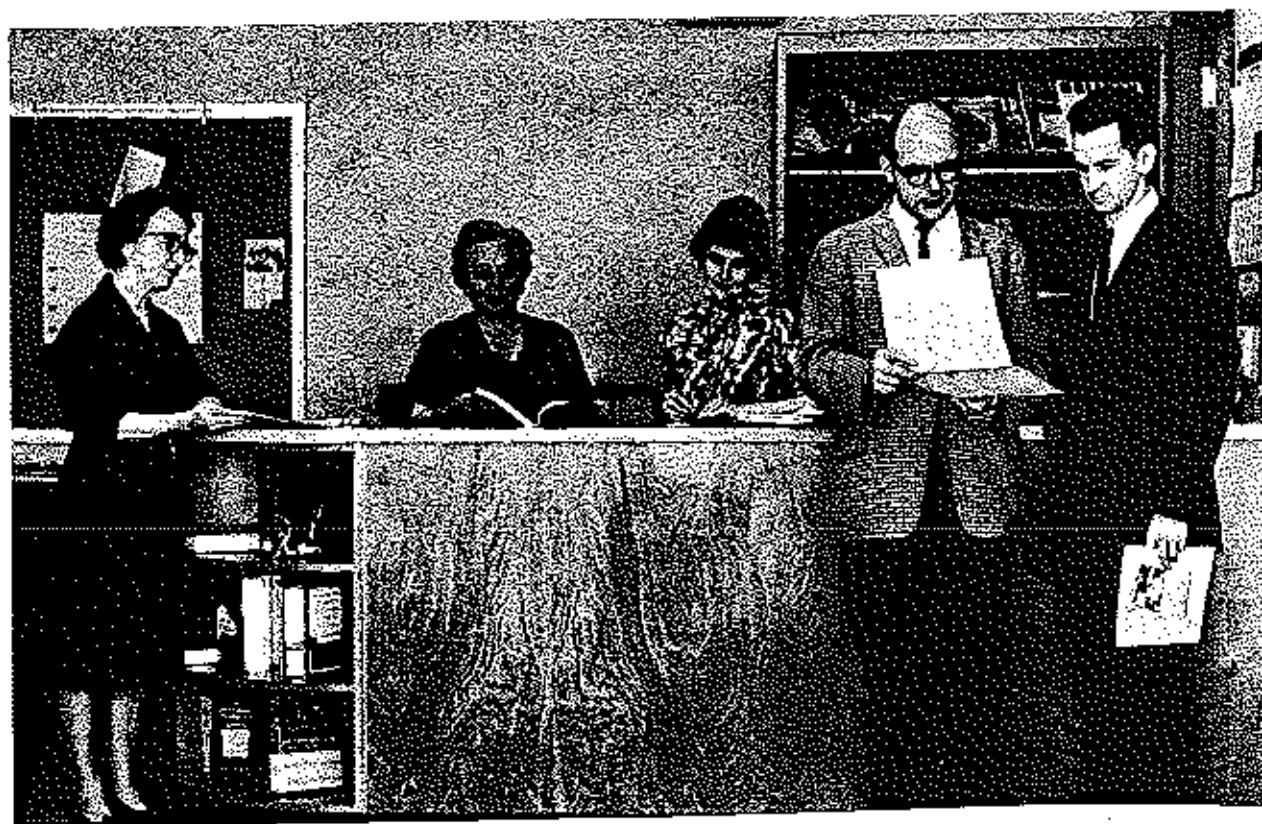
SOCIAL STUDIES

Mr. John Dowler, American History, Driver Education; Mr. David Shelton, Citizenship, Study Hall; Mrs. Alice Vernon, World History, Contemporary Issues, Geography; Mr. Jerry Whitehurst, World History, American History.



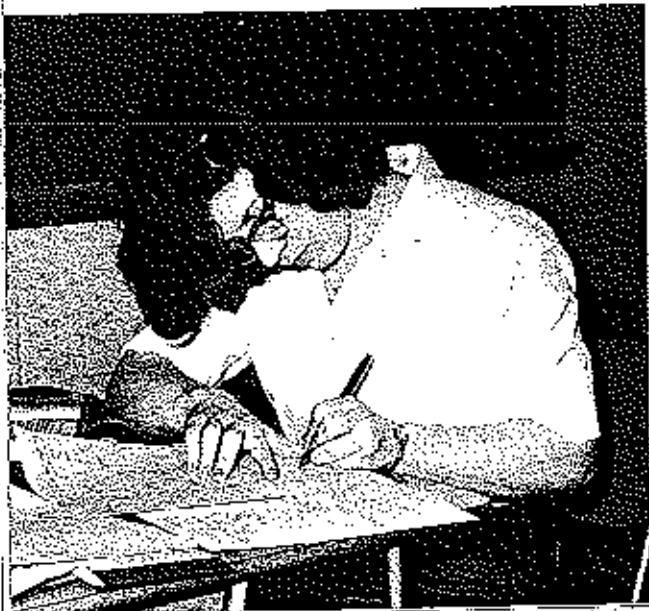
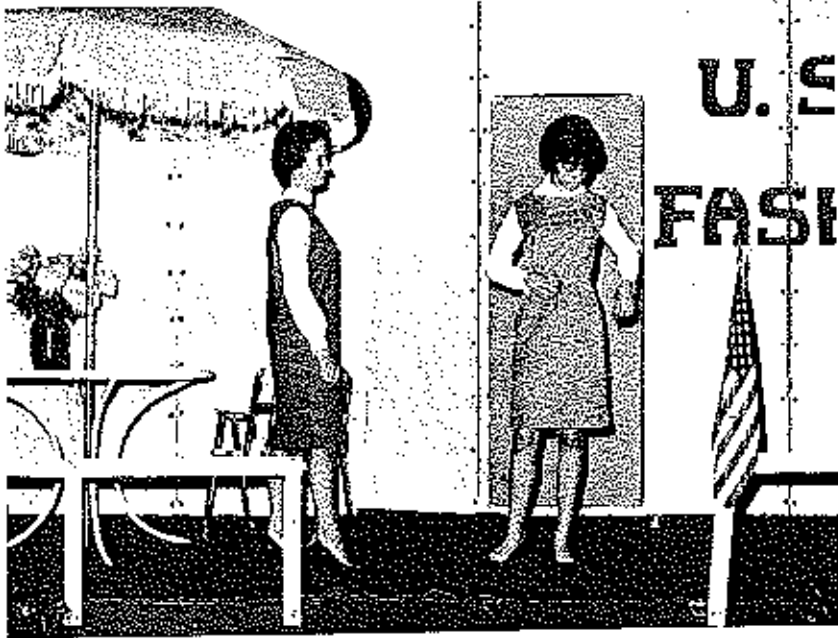
PHYSICAL EDUCATION AND FINE ARTS

Coach Ed Hodges, Boys' Physical Education; Coach Nancy Hodson, Girls' Physical Education; Miss Geraldine Haldiman, Band and Glee Club; Miss Beverly Scheperle, Art.



MISCELLANEOUS

Mrs. Ruth Lupardus, Librarian; Miss Lillian Swanson, Study Hall; Mrs. Ruth Bander, Study Hall and Jr. High; Mr. Ross Brush, Guidance Counselor; Mr. Walter Mooney, Administrator and C.O.E. instructor.



STUDENTS



SENIORS



Susie Luke, Secretary-Treasurer; Danny Frederickson, Vice-President; Sue Fyle, President.



JOYCE ALLEN

"There's a little bad in every good LITTLE girl."
 Heartthrob Ball Queen; REFERET Staff 3,4; REFERET Art Editor 4; Boys' & Girls' Glee Club 1,2,3,4; Mixed Chorus 1,2,3,4; Girls' Glee Club Secretary 3; Music Contest 1,2,3,4; Vocal Clinic 4; Pep Club 3,4; Honor Society 2,3,4; Spring Show 1,2,3,4; Christmas Program 1,2; Heartthrob Ball 3,4; Sparkletones 3,4; Fall Festival 1,2,3,4; F.H.A. 1,2,3,4; President 2; State Rep. 1; Song leader 1,3; Homeroom Secretary 2,3.

RONALD ANDREWS

"Now girls don't rush; he's sure to blush."

ALVIA APPERSON

"There are two sides to every question; my side and the wrong side."
 F.H.A. 1,2,3,4; Science Club 1,2; Library Assistant 2,3,4.

RALPH APPERSON

"I would be better if I could, but it's awful lonesome being good."
 C.O.E. 3,4; Industrial Arts 4.



"As I
is NC

"You

"Wh:
mend
Pep
toria
Work

"The
I'm
Girls
2,3,4
tone:
2,3,4

NORRIS ARNOLD

"As for as his brain is concerned, he is ever so humble, there is NOBODY HOME."

CURTIS ATKINSON

"You can't get lost in a straight road."

BETTY JO AYRES

"What a crummy driver she is--the Motor Vehicle Department just voted her Miss Crumble Bumper of 1964."

Pep Club 2,3,4; Fall Festival 3; F.H.A. 1,2,3; F.H.A. Historian 2; State Convention 2; Spanish Club 3,4; Office Worker 3.

CANDY BARKER

"They say that love makes the world go around. Catch me, I'm getting dizzy."

Girls' Glee Club 2,3,4; Mixed Chorus 2,3,4; Music Contest 2,3,4; Vocal Clinic 4; Spring Show 3,4; Band 2,3,4; Sparkletones 1,2,3,4; Fall Festival 1,3,4; G.A.A. 4; Heartthrob Ball 2,3,4; Messiah 3; Pep Club 1; Christmas Show 2.



FREDDY BLANKENSHIP

"He has a good brain but all the cells in it are PADDED." Industrial Arts 3,4; F.F.A. 1,2,3.

FERN BOHRN

"She that knows when to speak; knows when to be silent."

JAMES BOWLIN

"Heads I win, Tails you lose."

RICHARD BUNCII

"There's no one else like him in the whole wide world, that's why it's a much better place to live in."

Heartthrob Ball Prince; Industrial Arts Club 4; Boys' Glee Club 1,2,3,4; Treasurer 3; Mixed Chorus 1,2,3,4; Vocal Clinic 3,4; Spring Show 1,2,3,4; Band 1,2,3,4; President 3; Band Clinic 2,3,4; Sparkletones 1,2,3,4; Fall Festival 1,2,3,4; Science Club 1,2,3,4; President 4; Treasurer 1; C.O.E. 3; "B" Basketball 1,2; Track 1.



Art
is 1,
3,4;
ring
3,4;
Pres-
re-

c
4.
ring



VICTOR BUNCH

"He never puts off till tomorrow the mischief he can do today."

Industrial Arts Club 4; Vice President 4; Science Club 4; Boys' Glee Club 3,4; Mixed Chorus 3,4; Music Contest 3,4; Vocal Clinic 3,4; Spring Show 4; Fall Festival 3,4; Messiah 3; Student Council Representative 3; Student Council State Convention 3; Office Worker 1; F.F.A. 1,2; F.F.A. Delegate 1,2; Varsity Football 2; "A" Basketball 3.

ELLA DEF BURRIS

"Always do right. This will gratify some people and astonish others."

Pep Club 1,2,3,4; Girls' Glee Club 2,3,4; Mixed Chorus 2,3,4; Music Contest 1,2,3,4; Spring Show 2,3,4; Christmas Program 2; Messiah 3; Band 1,2,3,4; Band Clinic 1,2,3,4; Fall Festival 1,2,3,4; Honor Society 2,3,4; Spanish Club 4; Secretary 4; Girls' State 3; Vocal Clinic 4.

ALICE CALTON

"She liked to like people therefore people liked her."

ANNA CALTON

"To handle yourself, use your head; to handle others, use your heart."



GARY CARRENDER

"A careful student, careful not to overdo it."

"F" Club 3,4; Varsity Football 2,3,4; "A" Basketball 3,4; "B" Basketball 1,2; Track 2; Fall Festival 1,2; Science Club 1; Class Vice-President 1; Student Council Representative 1,2,3,4; Student Council District Convention 2.

RICHARD CLAXTON

"A woman's place is in the wrong."

"E" Club 2,3,4; Vice President 3; Varsity Football 2,3,4; "A" Basketball 3,4; "B" Basketball 1,2; Track 2; Fall Festival 1,2; Science Club 1; Science Club President 1; Student Council 4.

BETTY CLENIN

"She doesn't say much, but that's very well; she knows a lot she doesn't tell."

F.H.A. 3,4.

PAT COMBS

"I am now ready to enjoy life."

Homecoming Queen Candidate 4; Honor Society 3,4; Pep Club 1,2,3,4; Band 1; Band Clinic 1; Fall Festival 2,3; Maid 2; C.O.E. 3,4; C.O.E. Secretary-Treasurer 3; G.A.A. 4; Publicity Manager 4; F.H.A. 1,2,3; Reporter 2; MAROON & GOLD Staff Editor 4; Freshman Class Secretary-Treasurer; Office Worker 4.

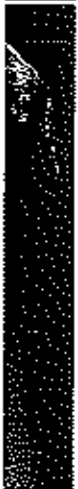


o to-
4;
3,4;
ssiah
State
agate

tonish

s
tmas
,4;
b 4;

ise



WANDA CONNELL

"Sweet in manner, kind in deeds."

F.H.A. 4; Library Assistant 4; Eugene High School 1,2.

ESTHER COTTON

"I came to school to get a general idea of things."

C.O.E. 4; F.H.A. 2,3,4.

JIM COTTEN

"I believe in getting in hot water; it keeps you clean."

F.F.A. 1,2,3; Industrial Arts Club 3,4.

KATHY CRANE

"She does her duties, but there's always time for fun."

Girls' Glee Club 1,2,3,4; Mixed Chorus 3,4; Music Contest 1,2,3,4; Spring Show 3,4; Christmas Program 1,2; Messiah 3; Fall Festival 3,4.



PATSY CROUCH

"A giggle here, a giggle there, a giggle-giggle everywhere."
F.H.A. 4.

KAREN CURRENCE SPARKS

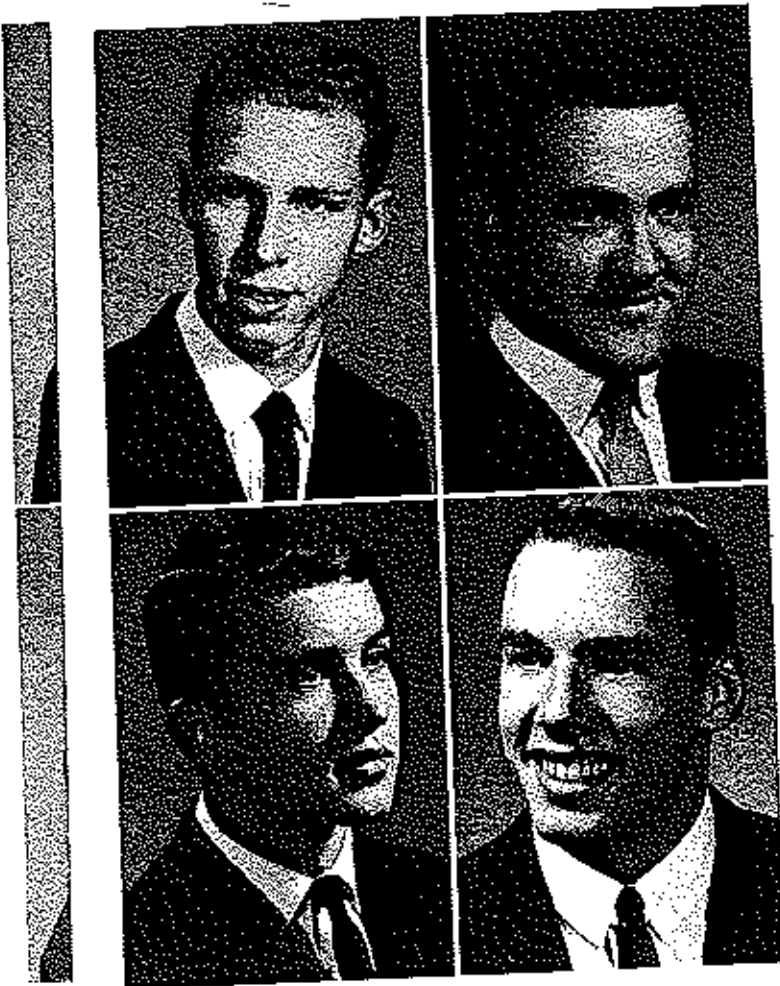
"Never underestimate the power of a woman in love."
REFERET STAFF 3,4; REFERET EDITOR 4; Pep Club 2,3,4;
Girls' Glee Club 1,2,3,4; Mixed Chorus 1,2,3,4; Vocal Clinic 4; Spring Show 1,2,3,4; Christmas Program 2; Heart-throb Ball 3,4; Fall Festival 2,3,4; F.H.A. 1,2,3,4; F.H.A. Songleader 1,2; F.H.A. Secretary 3; Office Worker 4; Messiah 3; Softball 1,2; Volleyball 1.

KAY CURTIS

"Despite her faults we like her still, the stiffer the better."
Pep Club 2,3,4; "B" Team Cheerleader 2,3; Girls' Glee Club 1,2,3,4; Mixed Chorus 1,2,3,4; Music Contest 1,2,3,4; Vocal Clinic 4; Spring Show 1,2,3,4; Christmas Program 2; Messiah 3; Heartthrob Ball 3,4; Fall Festival 1,2,3,4; F.H.A. 1,2; F.H.A. Treasurer 2; F.H.A. State Convention 2; G.A.A. 3; REFERET STAFF 4; Three-Act Plays 3,4; Office Worker 2,3.

SHERRY DAVIS

"There's madness in her method."
Pep Club 1,2,3,4; Girls' Glee Club 2,3,4; Mixed Chorus 2,3,4; Music Contest 1,2,3,4; Vocal Clinic 4; Spring Show 3,4; Christmas Program 2; Heartthrob Ball 3; Band 1,2,3,4; Band Clinic 2,3,4; Fall Festival 2,3; Honor Society 3,4; Science Club 1; Volleyball 1; Messiah 3.



GENE DILSE

"A man is as big as he feels."
Track 1,3; Boys' Glee Club 2,3,4; Glee Club Vice-President 3; Mixed Chorus 2,3,4; Music Contest 2,3,4; Vocal Clinic 2,3,4; Spring Show 2,3,4; Christmas Program 2; Band 2,3,4; Band Clinic 4; Fall Festival 2,3,4; C.O.E. 4; Messiah 3.

DONALD DINWIDDIE

"We are all manufacturers in a way--making good, making trouble, or making excuses."

JOHN DOOLIN

"Beware!! I may start something yet."
"E" Club 2,3,4; "E" Club President 4; Varsity Football 1,2,3,4; Track 2,3,4; Fall Festival 3; Thespians 3,4; MAROON & GOLD Staff 4; Student Council 2,3; Student Council State Convention 3; Student Council District Convention 3; Three-Act Plays 3,4; Speech Contest 3,4.

WM. GIBONEY EVANS

"He used to be in Who's Who, but now he's in Hai Hai!"
"E" Club 3,4; Varsity Football 2,3,4; "B" Basketball 1,2; Track 1,2,3,4; Boys' Glee Club 1,2,4; Mixed Chorus 1,2,4; Music Contest 1,2,4; Vocal Clinic 4; Spring Show 1,2,3,4; Christmas Program 1,2,3; Heartthrob Ball 2; Band 1,2,3,4; Band Clinics 3,4; Fall Festival 1,2,3,4; Three-Act Plays 3,4; Speech Contest 3,4.

"There
Pop Cl
Conver
3,4; St

"Quiet
C.O.E.
dustria

"High
pare w
Indust

"I'm l
F.J.A
sistan
1; C.C

"A
"E'
"B'
1;
3,4

CAROL RAY NEWBY

"Next to my head, I like my red hair best."
C.O.E. 3,4; St. Clair Shores High School, Michigan 3.

STANTON FARMER

"A word in earnest is better than a speech."
Fall Festival 2,3,4; Thespians 3,4; Science Club 1,2,3,4; President 3; Library Assistant 2,3,4; Vice-President 3; Three-Act Plays 3; Speech Contest 3,4.

DANIEL R. FREDERICKSON

"Life is just one woman after another."
Varsity Football 1; Boys' Glee Club 2,3,4; President 3; Mixed Chorus 2,3,4; Music Contests 2,3,4; Vocal Clinic 3,4; Spring Show 2,3,4; Christmas Program 2; Heartthrob Ball 3,4; Heartthrob Ball King 4; Band 2,3,4; Treasurer 3; President 4; Band Clinic 3,4; Sparkletones 4; Fall Festival 2,3,4; Science Club 1,2; Library Assistant 1; REFEREE STAFF 4; Senior Class Vice-President; Home-room President 4.

FRANK GEORGE

"Nobody has to amuse me, I'll amuse myself."
C.O.E. 3,4; Science Club 1,2,3; Library Assistant 1,2,3; Library President 4.

"A
"E'
"A
liv
Co

"Si
shc
F.f

"I
Ho
Ch
2;
Hd
GC
Off



ice-President
cal Clinic
Band 2,3,4;
ssiah 3.

rod, making

otball 1,2,
MAROON
ouncil State
ion 3;

ial Ha!"
tball 1,2;
orus 1,2,4;
ow 1,2,3,4;
ad 1,2,3,4;
Act Plays 3,4;

BARBARA GIER

"There was never a saint with red hair."
Pep Club 1,2,3,4; C.O.E. 3,4; C.O.E. Reporter 4; Delegates
Convention 4; F.H.A. 3,4; Library Assistant 1; Spanish Club
3,4; Spanish Club Treasurer 3; Office Worker 4; Softball 1.

EARL GOLDEN

"Quiet guy, but don't let his quietness fool you."
C.O.E. 4; Track 1; Fall Festival 2; Science Club 1,2,3; In-
dustrial Arts Club 4.

DONALD GOTHARD

"High school days have their delights, but they can't com-
pare with those high school nights."
Industrial Arts 3,4.

CAROLYN GRAHAM

"I'm here even if I don't tell everyone."
F.H.A. 1,4; Girls' Glee Club 1; Music Contest 1; Library As-
sistant 3,4; Spanish Club 3; Malvern High School, Arkansas
1; C.O.E. 4.



DIANA GREEN

"Keep smiling; it keeps everyone wondering what you've
been up to."
Office Worker 4.

ROSEMARY HADER

"She makes a career of helping people in trouble get into
more trouble."
Pep Club 1,2,3,4; Secretary-Treasurer 4; Girls' Glee Club 1;
Fall Festival 1,2,3,4; F.H.A. 1,2,3,4; Parliamentarian 2;
Vice-President 3; State Convention 3; Class Secretary 3;
Office Worker 4; Volleyball 1; Debate Contest 4; Home
Room Secretary 2,4; Home Room President 3.

JERRY HAGGERMAN

"Don't tell me what I mean; let me figure it out for my-
self."
"E" Club 2,3,4; Vice-President 4; Varsity Football 2,3,4;
Homecoming Escort 3,4; Fall Festival 3,4; Science Club 1;
Industrial Arts Club 4.

DELBERT HAYES

"This much he's learned about women, whenever they claim
they're not mad, they're furious."
"E" Club 2,3,4; Varsity Football 1,2,3,4; "A" Basketball
3,4; "B" Basketball 1,2; Track 1,2,3,4; Fall Festival 1;
C.O.E. 4; Science Club 1,3; Class President 1,3; Class Vice-
President 2; Student Council 1,2,3; District Convention 3.



GAY HELMER

"Nothing short of dynamite could move her rapidly."
Honor Society 3,4; Pep Club 1,2,3,4; Girls' Glee Club 1,2,3,4; Mixed Chorus 2,3,4; Music Contest 1,2,3,4; Vocal Clinic 4; Spring Show 1,2,3,4; Christmas Program 2; Messiah 3; Fall Festival 2,3,4; Heartthrob Ball 3; Spanish Club 3,4; F.H.A. 1.

WARREN HENDRIX

"He knew the precise psychological moment to do nothing."

NORRIS HENLEY

"Any fool can go to bed, but it takes a man to get up."
"E" Club 2,3,4; Varsity Football 1,2,3,4; "A" Basketball 3,4; "B" Basketball 1,2; Track 1,2,3,4; Science Club 1; Class Officer 1,3.

MARILYN HIBDON

"I'm not as bashful as I look."
Music Contest 2,3,4; Band 1,2,3,4; Band Clinic 3,4; Fall Festival 2,3; Softball 1.



DOYLE HOPKINS

"But, Pop, I have to go to Tusculumbia."
Band 4; Music Contest 4; Brookfield High School, Brookfield, Missouri 1,2,3.

KAREN MARIE HOWSEN

"If men talked about only what they understood, the silence would become unbearable."

Pep Club 1,2,3; C.O.E. 4; F.H.A. 2,3.

DARLENE ILGENFRITZ

"Full of fun and fancy free, that's the way she's got to be."
Pep Club 1,2,3; Fall Festival 1; C.O.E. 4; C.O.E. Secretary-Treasurer 4; C.O.E. Convention 4; C.E.C.A. Club 4; D.E.C.A. Secretary-Treasurer 4; Sports Day 2; F.H.A. 1; Homeroom Secretary 4; Office Worker 1,2,3,4.

TERRY ISENSEE

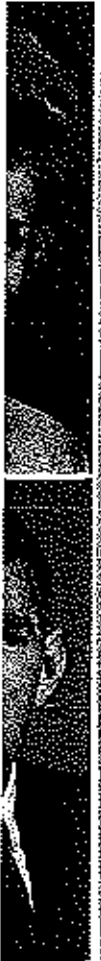
"There are greater men than I, but I doubt it."
"E" Club 4; Varsity Football 4; Track 3; Thespians 3,4; Thesplan Vice-President 4; Three-Act Plays 3,4; Speech Contest 3,4; Debate Team 4; Cherry Creek High School, Colorado 1,2,3.



1,2,
sal
Mes-
Club

thing."
,"
all 3,4;
ss Offi-

all



JOYCE ALMIRA JACKSON
 "Atoms are never very big either."
 Music Contest 2; Band 1,2; C.O.E. 4; Spanish Club 3,4.

HERSHFL JENKINS
 "All things come to he who waits . . . even a diploma."
 Spring Show 3; C.O.E. 4.

MARCIA JONES
 "It's silly to think, let's talk."
 Girls' State 3; Honor Society 3,4; Pep Club 1-4; (Vice-President 2) Girls' Glee Club 1-4; Mixed Chorus 3,4; Music Contest 1-4; Vocal Clinic 4; Spring Show 1-4; Christmas Program 1,2; Messiah 3; Heartthrob Ball 1-4; (Princess 4) Debate Team 4; Thespians 3,4; MAROON & GOLD staff 4; Speech Contest 3,4; G.A.A. 3,4; (Vice-President 3, President 4) Three-Act Play 3,4; Science Club 1.

DAVID JETT
 "Never a worry, never a care, when anything happens, he's always there."
 Spring Show 3; C.O.E. 4; F.F.A. 1,2,3.



NANCY BETH JOBE
 "Sing and I'll sing with you, study and you'll study alone."
 Pep Club 1,2,3,4; Girls' Glee Club 1,2,3,4; Mixed Chorus 1,2,3,4; Spring Show 3,4; Band 1,2,3; Band Clinic 3,4; Sparkletones 2,3; Fall Festival 3; C.O.E. 4; G.A.A. 3; Sports Day 3; Science Club 1; Library Assistant 1,2,3.

LANE JOHNSTON
 "She loves one--but which one."
 REFERET Staff 3,4; REFERET Assistant Editor 4; Honor Society 3,4; Pep Club 2,3,4; Girls' Glee Club 3,4; Mixed Chorus 3,4; Music Contest 1,2,3,4; Vocal Clinic 4; Spring Show 3,4; Band 1,2,3,4; Band Clinic 4; Sparkletones 4; Fall Festival 3,4; G.A.A. 3,4; Sports Day 3,4; Messiah 3; Library Assistant 1,2; Three-Act Plays 3; Office Worker 4.

SUZANNE SHEPHERD KREILING
 "A strong desire to do the right, will always make the pathway bright."
 Pep Club 2,3,4; Music Contest 1,2,3,4; Homecoming Queen Candidate 4; Band 1,2,3,4; Secretary 3; Fall Festival 1,3; Freshman Maid; F.H.A. 3,4; Secretary 4; "A" Cheerleader 3,4; Sophomore Class Secretary; Student Council Treasurer 4; District Convention 4; Homeroom President 2; Homeroom Secretary 3; Softball 1.

WAYNE LAUGHLIN
 "What he wants to get most out of school is himself."
 Industrial Arts Club 3,4.



SUSAN LUKE

"It's called homework. You scatter some books around and talk about boys."

Homecoming Queen 4; Pep Club 1,2,3; Christmas Program 2; Fall Festival 1,3,4; Maid 1,3; G.A.A. 3,4; Secretary-Treasurer 4; Debate Team 4; Thespians 2,3,4; Vice-President 3; President 4; Science Club 1,2,3; Secretary 1, Treasurer 2; "B" Team Cheerleader 3; MARION & GOLD Staff 4; Business Manager Senior Class Secretary-Treasurer; Three-Act Plays.

LARRY MCGILL

"Breathes there a man with soul so deal who's never turned around and said, 'Hummum--not bad!'"

"E" Club 2,3,4; Varsity Football 1,2,3,4; "B" Basketball 1,2; Track 1,2,3,4; Boys' Glee Club 1,2; Mixed Chorus 1,2; Music Contest 1,2; Spring Show 1,2; Heartthrob Ball 1,2; Band 1,2; Band Clinic 2; Sparkietones 2; Fall Festival 1,2; Thespians 3,4; Science Club 1,2,3; Three-Act Plays 3,4.

HOWARD MILBURN

"Young men should travel, if but only to amuse themselves."

"E" Club 2,3,4; Varsity Football 1,2,4; "A" Basketball 1,2; "B" Basketball 1,2; Track 1,2,3,4; Boys' Glee 1,2; Mixed Chorus 1,2; Honor Society 2,3; Sophomore Class President; Student Council 2,3,4; President 4; State Convention 2,3; District Convention 2,4; Three-Act Plays 3; Boys' State 3; Industrial Arts Club 4; Band 1,2,3,4; Band Clinic 1; Fall Festival 1,2,3,4; Escort 1; Spring Show 2.

SANDRA KAY MILES

"Woman will be the last thing civilized by man."

MARION & GOLD Assistant Editor 4; Pep Club 1,2,3; "A" Cheerleader 2,3; "B" Cheerleader 1; Girls' Glee Club 1,2,3; Mixed Chorus 2,3; Music Contest 1,2,3; Spring Show 2,3; Christmas Program 1,2; Messiah 3; Heartthrob Ball 2; Band 1; Fall Festival 2,3,4; C.O.E. 3,4; Convention 3,4; G.A.A. 3,4; Thespians 3,4; Three-Act Plays 3,4; Office Worker 4.

LORETTA LEUTHEN

"Sweetness of disposition charms the soul."

F.H.A. 1,2,3,4; F.H.A. State Convention 2; F.H.A. Treasurer 3; F.H.A. President 4; Honor Society 3,4; Library Assistant 1,4.

SHARON LEUTHEN

"Impish smile, dancing eyes, always gives us a big surprise!"

JAMES LONG

"He has a lot of depth on the surface, but deep down, he's very shallow."

Varsity Football 1; Boys' Glee Club 2; Mixed Chorus 2; C.O.E. 4; Science Club 1; Student Council 4.

BARBARA LOWERY

"Nothing so becomes a woman as a soft voice."

C.O.E. 4; Library Assistant 1,3; Spanish Club 3; D.E.C.A. Club 4.



"There's
Pep Club
1, Vice-
Vocal Cl
1-4; Ban
Class Tr
State Co
Queen C
1-4; Fal
Girls' St

"She nev
Pep Clu
3,4; Mus
2,3,4; C
1,2,3,4;
Society
Worker

"You m
work yo
Varsity
Club 1;
Plays 3,

"Think
cline."
"g" Clu
Festival
dustrial

DIANA OPIE

"There's a language in her eyes."
Pep Club 1-4; (Treasurer 2) Girls' Glee Club 1-4; (Librarian 1, Vice-President 3) Mixed Chorus 2-4; Music Contest 1-4; Vocal Clinic 4; Spring Show 2-4; Heartthrob Ball 1-4; Band 1-4; Band Clinic 3,4; (Vice-President 3) Honor Society 1-4; Class Treasurer 3; Student Council 1-4; (Vice-President 4, State Convention 2, District Convention 2,4) Homecoming Queen Candidate 4; Heartthrob Ball Princess 4; Sparkletones 1-4; Fall Festival 1-4; (Maid 2) Christmas Program 2-4; Girls' State 3.

CAROLYN PECK

"She never exaggerates, she just remembers big."
Pep Club 1,2; Girls' Glee Club 1,2,3,4; Mixed Chorus 1,2,3,4; Music Contest 1,2,3,4; Vocal Clinic 4; Spring Show 2,3,4; Christmas Program 1,2; Messiah 3; Heartthrob Ball 1,2,3,4; Fall Festival 1,2,3,4; REFERET Staff 4; Honor Society 4; F.H.A. 1,2,3,4; F.H.A. Secretary 2; Office Worker 4; Volleyball team 1.

GARY PLATZ

"You must learn a skill--or you won't know what kind of work you are out of."
Varsity Football 2; Fall Festival 1,2,3,4; Thespians 4; Science Club 1; Library Assistant 3; Spanish Club 3,4; Three-Act Plays 3,4; Speech Contest 3; Office Worker 1,

MIKE PYLE

"Thinking is an idle waste of time, so I let my brain recline."
"E" Club 3,4; Varsity Football 2,3,4; "B" Basketball 2; Fall Festival 2,4; Office Worker 4; Industrial Arts Club 3,4; Industrial Arts Treasurer 4; Roosevelt High School 1.



SUE PYLE

"Looks pious--but looks are deceiving."
Honor Society 4; Pep Club 2,3,4; Pep Club Secretary-Treasurer 3; Pep Club Vice-President 4; Girls' Glee Club 3; Mixed Chorus 3; Spring Show 3; Music Contest 3; Messiah 3; Fall Festival 2,3,4; C.O.E. 3,4; C.O.E. State Convention 3,4; D.E.C.A. Delegate 4; G.A.A. 3,4; G.A.A. President 3; Senior Class President; Student Council 4; Spanish Club 4; Spanish Club 3,4; Spanish Club President 3; Office Worker 3,4; Roosevelt High School 1.

CYNTHIA LEAH QUIGLEY

"Her motto is--every man to myself."
Pep Club 2,3,4; "A" Cheerleader 3; "B" Cheerleader 2; Girls' Glee Club 3-4; Mixed Chorus 2,3,4; All-State Music Camp 3; Music Contest 1-4; Vocal Clinic 4; Spring Show 2,4; Christmas Program 2; Messiah 3; Fall Festival 2,3,4; Fall Festival Student Director 4; G.A.A. 3,4; Sports Day 1; Thespians 3,4; Thespians Treasurer 4; MAROON & GOLD Staff 4; Three-Act Plays 3,4; Speech Contests 4; Van Horn High School 1.

KENNY RADER

"We love to see him laugh--so much of him has a good time."
Science Club 1; Homecoming 4; Fall Festival 4.

ELLA MAE RAINS

"What's in a name? I expect to change mine."
Office Worker 3; Science Club 1.





LINDA RAINS

"Everyone looks up to her."
Girls' Glee Club 2; Music Contest 2; G.A.A. 4; F.H.A. 4;
Volleyball 1.

LARRY FRANCIS RICE

"What goes up with a velocity of less than 4.8 miles per second must come down."
Boys' Glee Club 1,2; Mixed Chorus 1,2; Music Contest 1,2;
Vocal Clinic 1; Spring Show 1,2; Christmas Program 1,2;
Thespians 3,4; Honor Society 2,3,4; Vice-President 4;
MAROON & GOLD Art Editor 4; Three-Act Plays 3,4; Speech
Contest 2,3,4; Boys' State 3; Spanish Club 4; President 4;
Fall Festival 1-4.

RONALD ROBINETT

"I believe in getting in hot water; it keeps you clean."
Industrial Arts Club 4.

JOHN SCHUPP

"Thinking does tire me so."
F.F.A. 1,2,3,4; F.F.A. Treasurer 4; Industrial Arts Club 4.

PAUL SCHUPP

"You'll have to see him to know him."
Music Contest 1,2; Band 1,2; C.O.E. 3,4; F.F.A. 1,2.

VIVIAN SCOTT

"A girl has to learn how to detect an engagement ring in a
men's voice."
F.H.A. 2,3,4; Office Worker 2.

CATHY SHELTON

"Never speak sense when nonsense will answer the purpose
as well."
Pep Club 1,2,3,4; Girls' Glee Club 1,2,3,4; Mixed Chorus 2,
3,4; Music Contest 1,2,3,4; Vocal Clinic 4; Spring Show 2,3,
4; Christmas Program 1,2; Messiah 3; Band 1,2,3,4; Band
Clinic 1,2,3,4; Fall Festival 3,4; Honor Society 2,3,4; Spanish
Club 4.

LESLIE LEE SHOEMAKER

"I vow to be a confirmed bachelor."
Honor Society 3,4; Spanish Club 4.



"A
Pep
Club
Pres
Spe
Bes
3,4
Th

"Sc
up
Me
Sci
Th

"L
F.F.

"H
2
Fe
W

BARBARA SIMMONS

"A bluish, beautiful, but sometimes inconvenient."
 Pep Club 1-4; President 4; Girls' Glee Club 1-4; Mixed Chorus 3,4; Music Contest 1-4; Spring Show 2,4; Christmas Program 1,2; Messiah 3; Heartthrob Ball 1,2,4; Band 1; Sparkletones 1; Fall Festival 1-4; "Queen of Popularity and Beauty"; G.A.A. 3; F.H.A. 3,4; Thespians 2,3,4; Secretary 3,4; Student Council Secretary 4; District Convention 4; Three-Act Plays 3; Volleyball 1,2; Softball 1,2.

GARY SMALL

"Sometimes I study and sometimes I just go to school."
 "E" Club 4; Varsity Football 3,4; Boys' Glee Club 1,2; Music Contest 1,2; Fall Festival 1,2,3; Honor Society 3; Science Club 1,2; Spanish Club 3,4; Vice-President 4; Three-Act Plays 3.

FRED SMOCK

"Learning makes a man fit company for himself."
 F.F.A. 1,2,3; Industrial Arts Club 4.

CAROL STARK

"If I were running the world, I would have it rain between 2 and 5 a.m.--anyone who was out then ought to get wet."
 Pep Club 1,2,3,4; Girls' Glee Club 1; F.H.A. 2,3; Office Worker 4.



JUDY STEPHENS

"Her conversation is marked by its happy abundance."
 Music Contest 1,2,3,4; Band 1,2,3,4; Band Clinic 2; Fall Festival 3; Spring Show 3; F.H.A. 3,4; F.H.A. Officer 4; Library Assistant 2; Three-Act Plays 4.

CHARLES TAYLOR

"Blessed be the man that invented sleep."
 "F" Club 2,3,4; Varsity Football 2,3,4; "A" Basketball 3,4; "B" Basketball 1,2; Student Council 1,2,3; Industrial Arts Club Secretary 4; Homeroom President 3,4.

BECKY THACKER

"Rest is for the dead."
 Pep Club 1,2,4; Girls' Glee Club 1-4; Mixed Chorus 2,3,4; Music Contest 1-4; Vocal Clinic 4; Spring Show 2,3,4; Christmas Program 1,2,4; Heartthrob Ball 3; Band 1,2,3; Band Clinic 1,2,3; Fall Festival 2,3,4; G.A.A. 3,4; Vice-President 4; Sports Day 4; Thespians 3,4; Honor Society 3,4; President 4; Three-Act Plays 3,4; Girls' State 3; Messiah 3.

CAROL SUE TRACY

"A small tornado coming fast."
 C.O.E. 4; F.H.A. 3; Manager of Girls' Volleyball Team 2.



JERRY VERNON

"Nothing's new, nothing's true, and nothing matters."
 "B" Basketball 1; Boys' Glee Club 1; Mixed Chorus 1; Music Contest 1; Vocal Clinic 1; Christmas Program 1; Band 1; Fall Festival 1; Science Club 1; Office Worker 3; Catalina High School 2.

BILL WACHOB

"Likes to work or play, preferably play."
 "A" Basketball 3; "B" Basketball 1,2; Boys' Glee Club 1,2,4; Music Contest 1,2,4; Mixed Chorus 1,2,4; Vocal Clinic 1,2,4; Spring Show 1,2,4; Christmas Program 1; Heartthrob Ball 2,4; Band Announcer 4; Fall Festival 1-4; Thespians 3,4; Honor Society 3,4; MAROON & GOLD Staff 4; Student Council 3,4; (State Convention 3, District Convention 4) Three-Act Plays 3,4.

EDDIE WEAVER

"I came, I bluffed, I graduated."

DENNIS G. WOOD

"His marriage will be a combination of brains and beauty-- his wife will have them both."
 Boys' Glee Club 1-4; Mixed Chorus 1-4; Music Contest 1-4; Vocal Clinic 3,4; Spring Show 2,3,4; Heartthrob Ball 3,4; King Candidate 4; Fall Festival 3,4; C.O.E. 4; President 4; State Vice-President 4; Thespians 3,4; Honor Society 3; REFEREE Staff 3; Three-Act Plays 4; Boys' State 3; Debate Team 4.



MARY R. WOOD

"Quiet, modest, and perfectly true."

Girls' Glee Club 1,2,3,4; Mixed Chorus 2,3,4; Music Contest 1,2,3,4; Vocal Clinic 4; Spring Show 2,3,4; Christmas Program 1,2; Heartthrob Ball 3,4; Band 1,2,3,4; Band Clinic 2,3,4; Fall Festival 2,3; Honor Society 3,4; Messiah 3.

STEVE WOOD

"I'd like to be shy, but girls won't let me."
 Library Assistant 2.

BOB YOWS

"After four years of faithful service--I'm laid off."
 "E" Club 4; Varsity Football 1,2,3,4; Fall Festival 1,2; Industrial Arts Club 4.



Music
1; Fall
High



"The latest Scandel and more"

1,2,4;
c 1,2,4;
all 2,4;
onor
sil 3,4;
t Plays



The Winner!!!

auty--

st 1-4;
3,4;
ent 4;
3;
Debate



No rest for the wicked

Down you peasants down.



Smile



Crit and hear it!

We are only helping work on three floats.





BIGGEST POLITICANS
Bill Cooley and Marcia Jones



SMARTEST AND MOST LIKELY TO SUCCEED
Larry Rice and Becky Thacker



MOST NEATLY DRESSED
Becky Thacker and Larry Gary



PRETTIEST GIRL
Barbara Simmons

MOST HANDSOME BOY
Delbert Hayes



PRETTIEST EYES
Diana Opie and Dan

BEST DANCERS
Susie Luke and Larry McGill

MOST POPULAR
Diana Opie and Howard Milburn

MOST POISED AND BEST
Barbara Simmons and





'NEATLY DRESSED
Barker and
Gary Carrander



FRIENDLIEST
Charley Taylor and Sue Pyle



'WINDIEST'
Kenny Rader and Cindy Quigley



'ETTIEST EYES
Opie and
Danny Frederickson



PRETTIEST
John Doolin

HAIR
Suzanne Kreiling

'SED AND BEST ATHLETE,
Simmons
and Norris Henley



WITTIEST
Candy Barker and Norris Arnold



MOST LIKELY 'TO MARRY
Pat Combs and Delbert Hayes



JUNIORS

Avonda Andrews
Earl Atkinson
Larry Banner
Marilyn Barnhart
Dianne Barnhouse



Barbara Beanland
Gary Beanland
Robert Bishop
Donnie Bond
Dennis Bond



Freddie Buchanan
Mike Callison
Doug Campbell
Mitch Campbell
Charles Clark



Genece Clawson
Sam Clawson
Linda Clenin
Linda Conner
Julieen Crane



Roy Crigler
Kenneth Crouch
Gary Dawson
Larry Deffenbaugh
Linda Dickerson



Hal Dolby
Benny Duffield
Dayle Dunstan
Roger Eads
Suzanne Edwards





Joyce Fisher
 Sally Flora
 Cathy Frank
 Carolyn Gier
 Linda Cler



Larry Golden
 Joan Gracy
 Florence Green
 Bill Hall
 Jim Harbison



Tom Harmon
 Ronnie Heather
 Bill Hibdon
 Ruby Hicks
 Roger Hill



Wayne Hlavacck
 Bill Hodges
 Meta Hoemeke
 Mike Hoffner
 Donald Howren



Betty Howser
 Christie Howser
 Connie Howser
 Paul Howser
 Phebe Huxtabise



Kenneth Hunt
 Debbie Inler
 Barry Jarrett
 Larry Jarrett
 Sue Jefferies

Hazel Jobe
 Al Jones
 Sharon Keys
 Betty Kempker
 Eddie Kempker



Barbara Kimball
 Linda Kratzer
 Lovena Lewis
 Don Love
 Margaret McBroom



Janice McDaniel
 Cheryl Madole
 Sue Maher
 Anna Martin
 Dennis Martin



LaHoma Martin
 Sandy Miller
 Lynn Mitchell
 Larry Morris
 Paula Mosher



Donald Parkhurst
 Connie Petot
 Steve Platz
 Larry Polly
 Leroy Porter



Nancy Procter
 Mildred Purl
 Linda Pyle
 Timon Rainis
 Gary Reed





Roger Robinett
 Charlene Rogers
 Mary Lee Rohls
 Dwyain Sachs
 Edward Scott



Mike Shae
 Sandra Shoultz
 Laurel Smith
 Linda Stockwell
 Linda Strickland



Scherry Sullins
 David Taylor
 Evelyn Thacker
 Russell Thorson
 Beryl Jean Vaughn



David Vernon
 Jane Watt
 Lynda Williams
 Faye Winters
 Gary Witt



Jim Wood
 Richard Wood
 Bill Wright
 Mareena Young
 Chester Zuck



Junior Class Officers: Linda Gier,
 Treasurer; Sue Maher, Secretary;
 Lynne Mitchell, Vice-President;
 Leroy Porter, President.





Now, how do we get up?



I'm hungry, but I just don't have the money.



A pickle in the middle and some mustard on the top.

Are the Beatles really coming?

Do you think she'll run now?



SOPHOMORES



Bill Abbett
Cheryl Adcock
Gary Ahart
Linda Ahart
Frank Baackes
Sandy Barker



Carolyn Barks
Debbie Bender
Ward Bond
Elva Bowline
Joe Branstetter
Rebecca Branstetter



Paul Buchanan
Elaine Buehler
Kenyon Bunch
Randall Bunch
Cynthia Burris
Nancy Callison



Louise Campbell
Martha Carroll
Judy Chapman
Garland Clark
Ronald Claxton
Danny Collier



Sharon Cooper
Billy Cox
Steve Crane
Sylvia Davenport
Marsha Dawson
Anita Deffenbaugh



Harold Degraffemeid
Steve Eckenberger
Georgetta Edelman
Vilene Feese
Marjorie Fischer
Nancy Flora

Peggy Frederickson
 Bruce Gardner
 LaDawn Graham
 Steve Graham
 Glenn Graves
 Cindy Green



Charlotte Hackler
 Diana Hale
 Rufus Harmon
 Linda Hart
 Jimmy Hatch
 Melvin Hayes



Mildred Hayes
 Dale Hees
 Cleet Helms
 Harold Hicks
 Jack Holt
 Linda Hoskins



Judy Howser
 Scotty Jackson
 JoAnn Jacobs
 Karon James
 Sharon James
 Lila Jarret

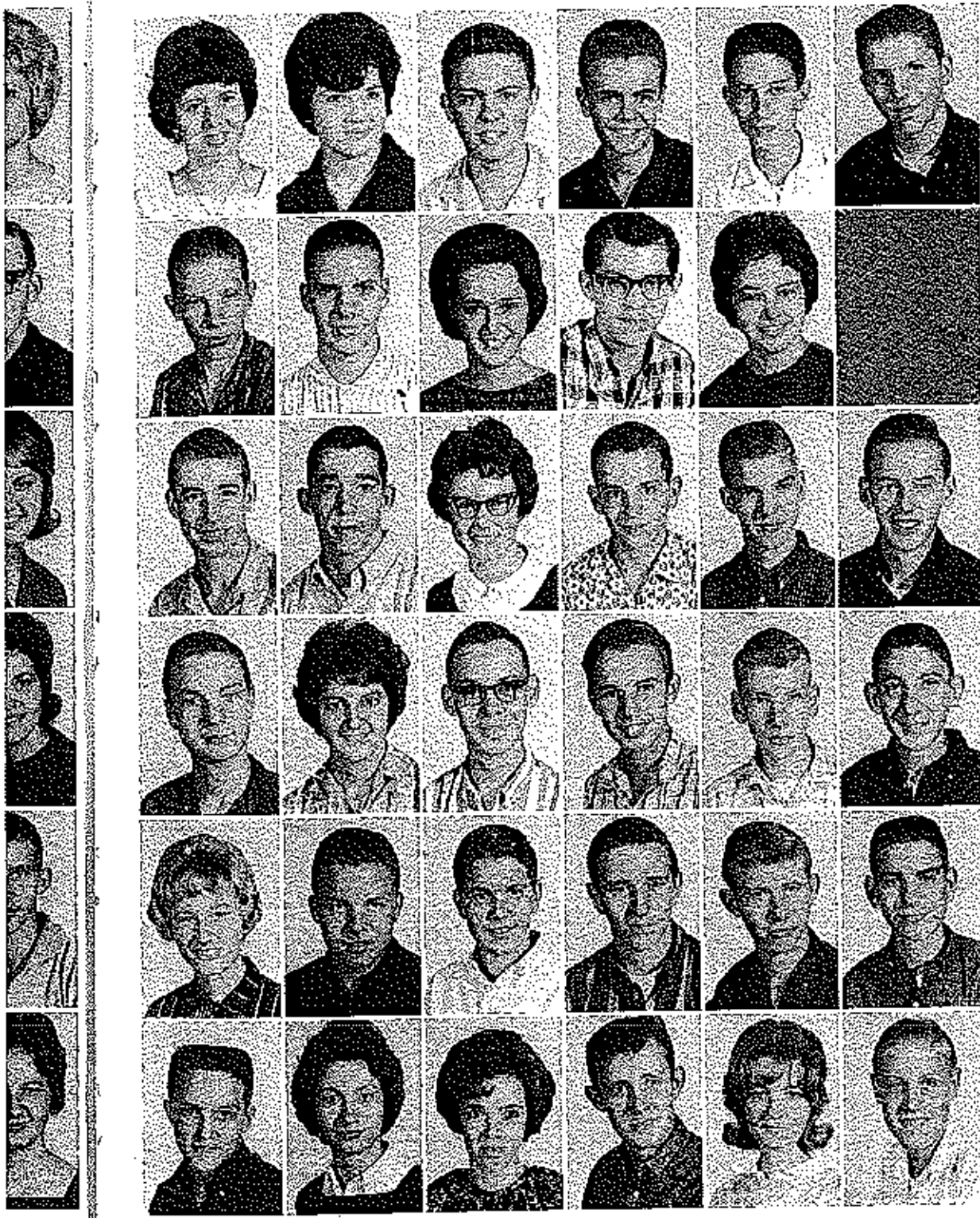


Marilyn Jobe
 Steve Jones
 Sharon Kidwell
 Margaret Kimball
 Carolyn Knerschield
 Dennis Lambeth



Sally Lauderdale
 Roberta Ledbetter
 Larry Liefert
 Jimmy Lester
 Angelia Leuthen
 Cerita Leuthen





Ruby McConnell
 Shirley McKinney
 Wayne McKinley
 Harley McMillan
 Donnie Martin
 Edward Massey

Phillip Mackmann
 Mike Miles
 Gayle Mintum
 Ronnie Nelson
 Eva North
 Dixie Opie

Floyd Oudekirk
 John Parkins
 Patricia Payne
 Larry Peck
 Benny Poague
 Ray Polly

Kim Potzmann
 Chris Pyle
 Greg Quigley
 Dennis Rand
 Robert Ranum
 Junior Reed

Keven Reed
 Steve Rogers
 Steve Saak
 James Sanders
 John Sanning
 John Schmitz

Ronnie Schuler
 Mary Lou Schuler
 Linda Scott
 Howard Scivner
 Marilyn Scrivner
 James Seaton

Carol Shackelford
 Ann Shepherd
 Kay Shepherd
 Darlene Small
 Ronnie Spencer
 Harold Taylor



Lana Totley
 Charles Thomson
 Roger Thorson
 Daniel Turpin
 Nancy Ulrey
 David Upton



Kenneth Vaughan
 Donald Vernon
 Joe Vernon
 Randy Vernon
 Tommy Volkart
 Terry Wachob



Debbie Wallis
 Mike Whittle
 Ellen Widowski
 Betty Williams
 Jack Williams
 Valerie Winn



Aiva Dale Witherell
 Loyd Witt
 Ronnie Witt
 Robert Wolfe
 Arthur Wood
 Donald Wayne Wood



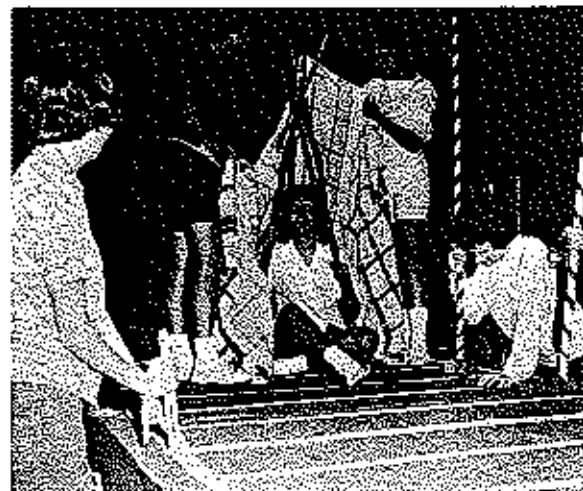
Donald Winston Wood
 Kenneth Wood
 Roger Wood
 Linda Workman
 Ronald Worthey
 John Wright





Laslee Young
Carol Fowler

Cerita Leathen



Sophomore Class Officers: Kay Shepherd; Vice-President; Darlene Small, Secretary-Treasurer; Randy Vernon, President.



FRESHMEN

Dale Abbott
Tommy Adams
Ronald Ahart
Linda Arnold
Stanley Barnhart
Steve Barahouse



Karen Baucom
Larry Baysinger
David Beanland
Gerald Beanland
John Beard
Betty Birdsong



Barry Biselx
Joan Blakley
Linda Blenkenship
Ricky Blomberg
Steve Bock
Gerald Bohrn



Marvin Bond
Ricky Bradshaw
Malcolm Branstetter
Doana Brunley
Gary Brunley
Alfred Buchanan



Timmy Bunch
Phillip Byrd
Phyllis Byrd
Frank Calhoon
Jeannie Callison
Wanda Clark



Gary Connerl
Mike Cornett
Linda Cotten
Louise Cotten
Steve Cotten
David Cox





Judith Currence
Donald Curtis
Robert Daveaport
Mike Davis
Liz Dolby
Billy Duncan



David Eckenberger
Larry Erickson
Barbara Evans
Pat Evans
Roger Flaughter
Patti Fry



George Golden
Linda Golden
Dwight Hand
Terry Hart
Janet Hees
Kathy Hinkley



Karl Hoffner
Connie Horton
Phyllis Howser
Rita Inler
Kathy Jeffries
Richard Jenkins



Leroy Kempker
Shirley Kerr
Alanda Ketsay
Jean Kidwell
Jackie Kimball
Douglas Kuster



Anita Lake
Glenda Lambeth
Pamela Ledbetter
Susan Leffert
Harry Luke
Ronald Flaughter

Mike McGinnis
 Gary McKinley
 Larry Maher
 Karen May
 David Milburn
 Larry Parkhurst



Jackie Patrick
 Kay Payne
 Larry Pletzer
 Sharon Popp
 Sue Potter
 Ronnie Procter



Helen Purl
 Mike Quick
 Lymon Rains
 Jimmy Roark
 Kenneth Roark
 Sonny Runyon



Nancy Schulte
 Clifford Schupp
 Lois Schupp
 Janet Scott
 Janice Scott
 Randy Scott



Tom Seaton
 Cathy Shackelford
 Carl Simmons
 Janice Skiles
 Dennis Smith
 Mike Smith



Tom Smith
 David Spalding
 Rose Mary Sparks
 Larry Spencer
 Carol Stockwell
 Randy Swope





Carlene Thomas
Dixie Thompson
Martha Turpin
Sara Vanhoover
Don Vansel
John Vernon



Carolyn Wall
Darrell Weberry
Mike Whittle
Iia Jean Whitworth
Pat Williams
Richard Wilson



Hazel Witt
Wayne Witt
Janice Wood
Mike Wood
Phil Wood
Steve Wood



Barbara Works
Lynda Wright
Gary Wayc
Mary Parkhurst



Freshman Class Officers
President--Sunny Runyon, Vice-President--Liz Dolby,
Secretary-Treasurer--Patti Fry.



ROYALTY





HOMECOMING QUEEN

HOMECOMING COURT



Princess Diana Opie



Princess Suzanne Kreiling



Queen Susie Luke



Princess Barbara Simmons



Princess Pat Combs



QUEEN OF POPULARITY & BEAUTY

FALL FESTIVAL COURT



Princess Becky Thacker

Queen Barbara Simmons

Princess Diana Opie



Freshman: Rita Imler and Liz Dolby

Sophomore: Elaine Buchler and Kay Shepherd

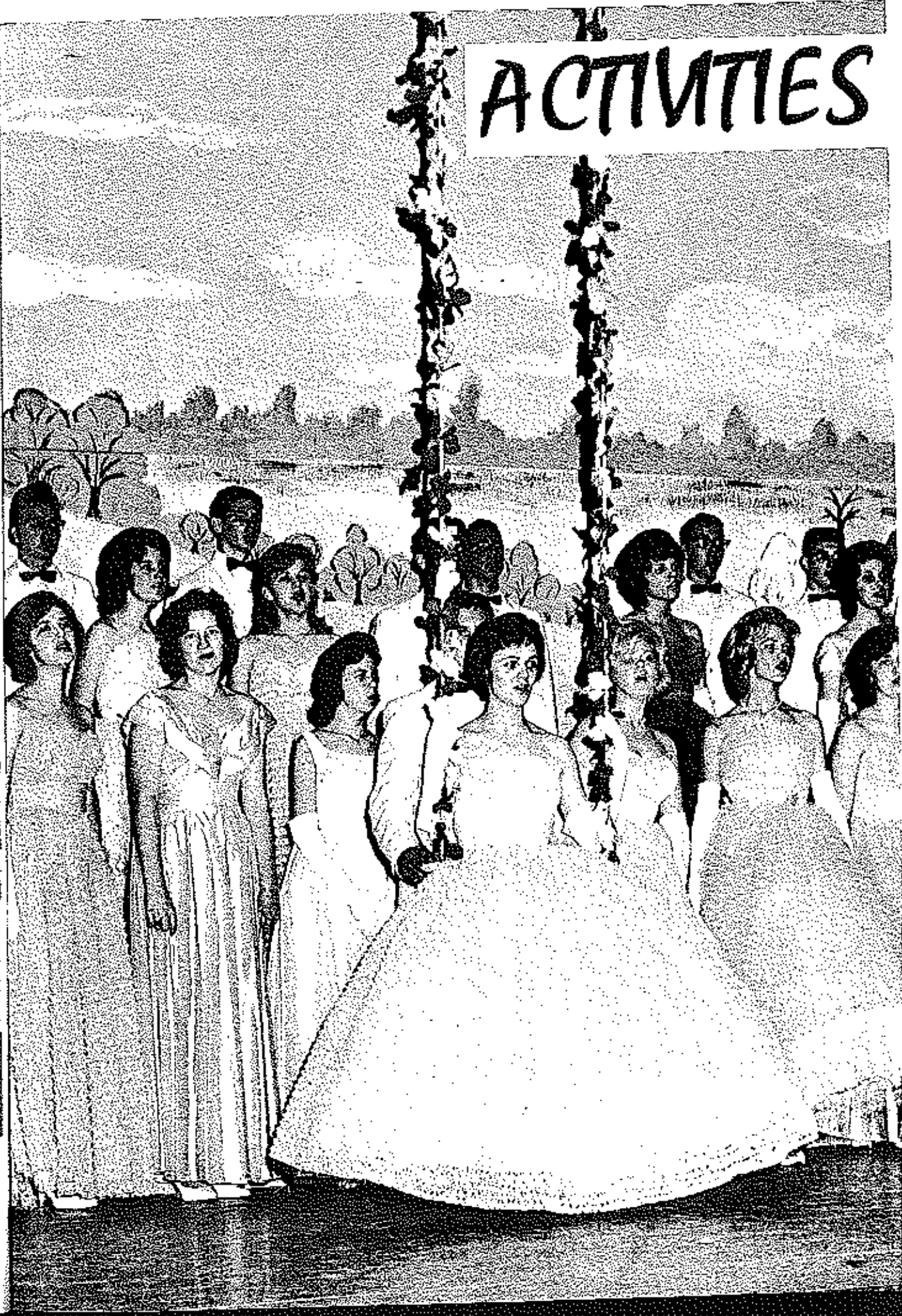
Junior: Hazel Jobe and Dianne Barnhouse

HEARTHROB BALL KING QUEEN & COURT

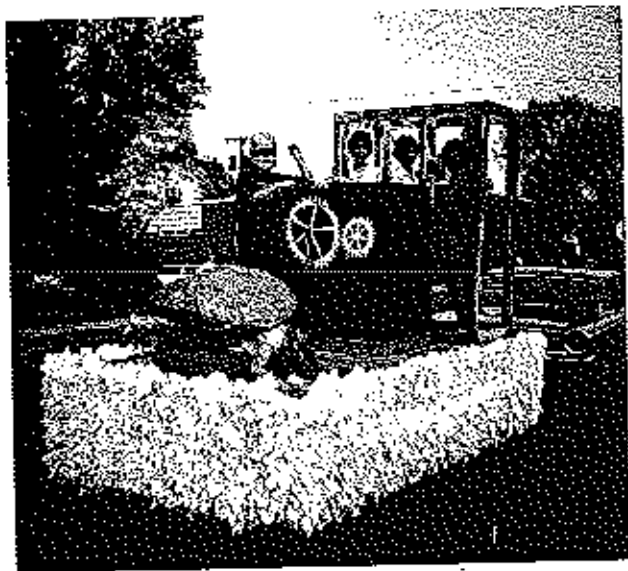
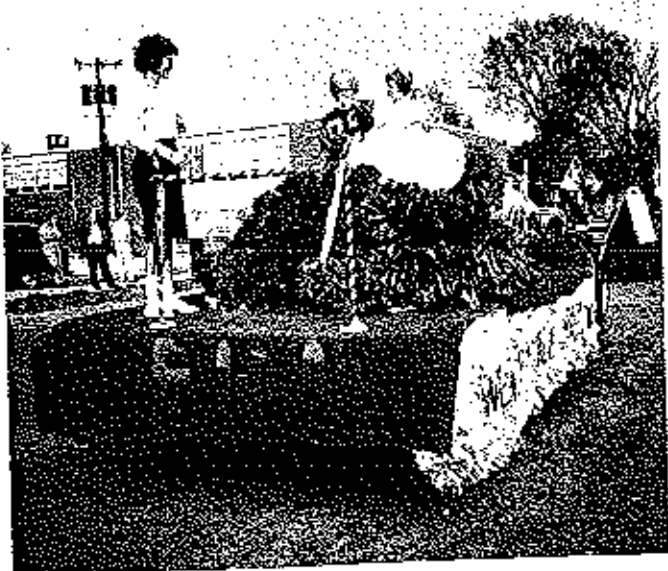
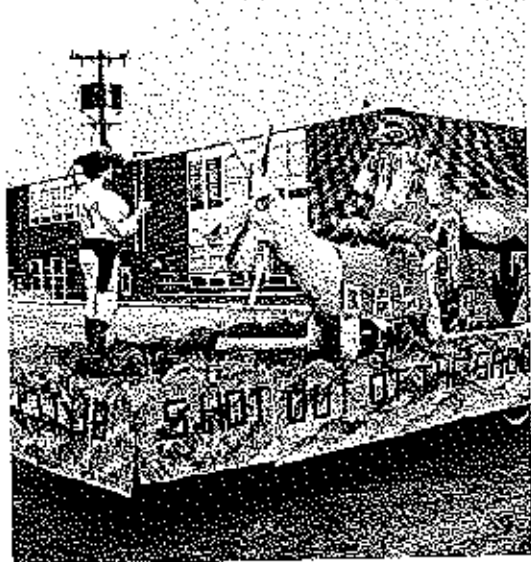


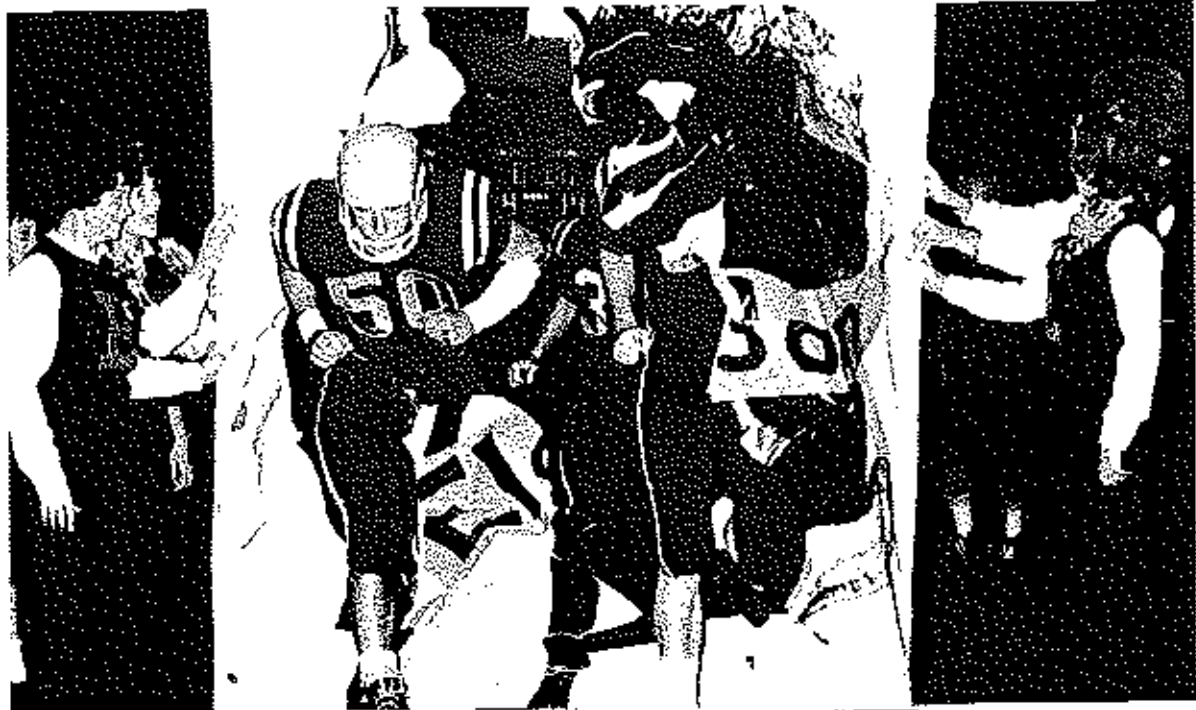
King Danny Frederickson & Queen Joyee Allen
Princess Diana Opic
Princess Marcia Jones
Prince Richard Bunch
Prince Dennis Wood

ACTIVITIES



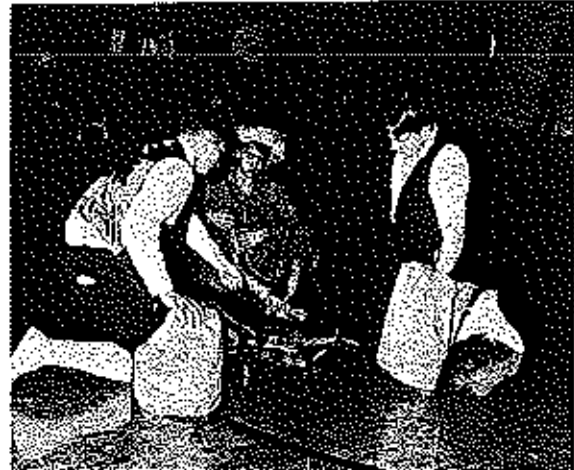
ELDON HOMECOMING '63





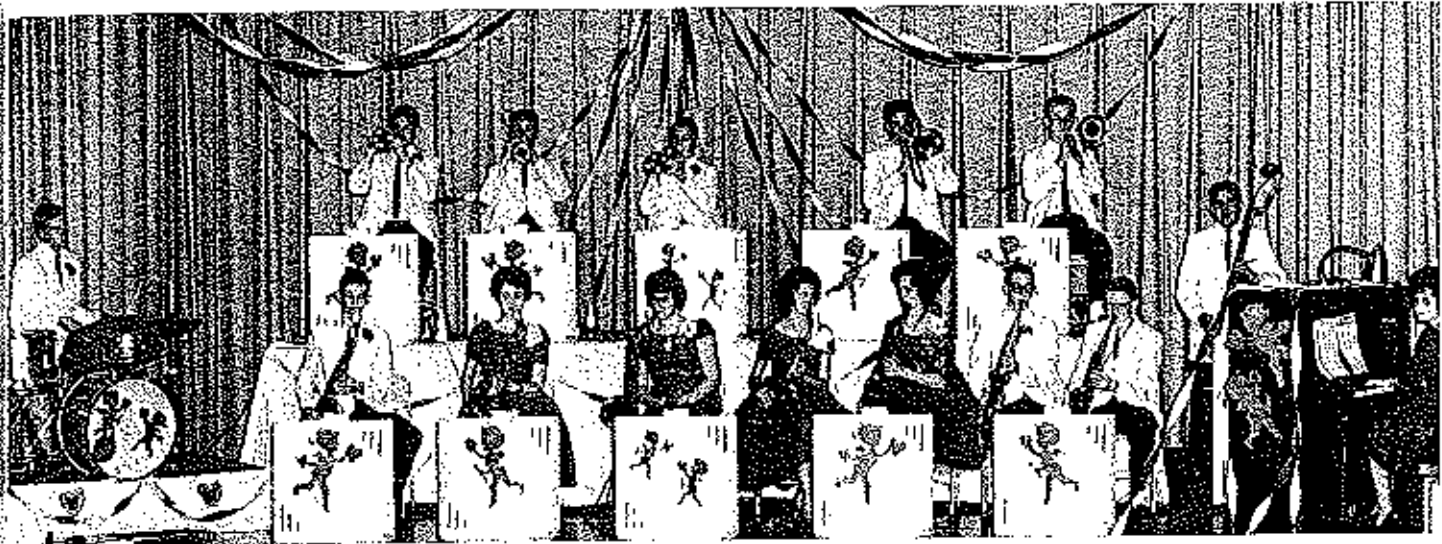


FALL FESTIVAL



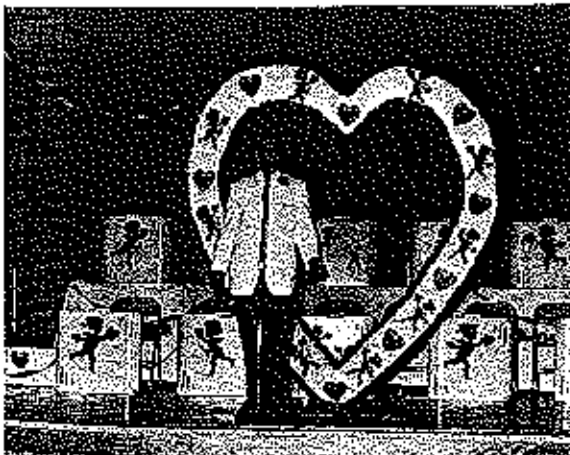


HEARTHROB BALL 1964



SPARKLETONES

Drums: Steve Jones; Saxophones: Timmy Bunch, Lane Johnston, Louise Campbell, Diana Opie, Candy Barker, John Beard, and Larry Erickson; Trumpets: Donald Howren, Mike Davis, and Wayne Hlavacek; Trombones: Gary Dawson and Richard Bunch; String Bass: Darryl Frederickson; Piano: Joyce Allen.



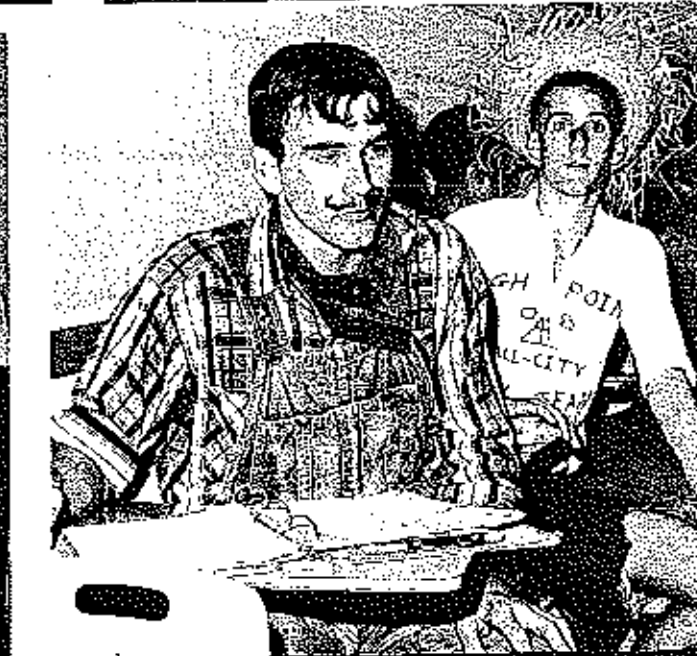
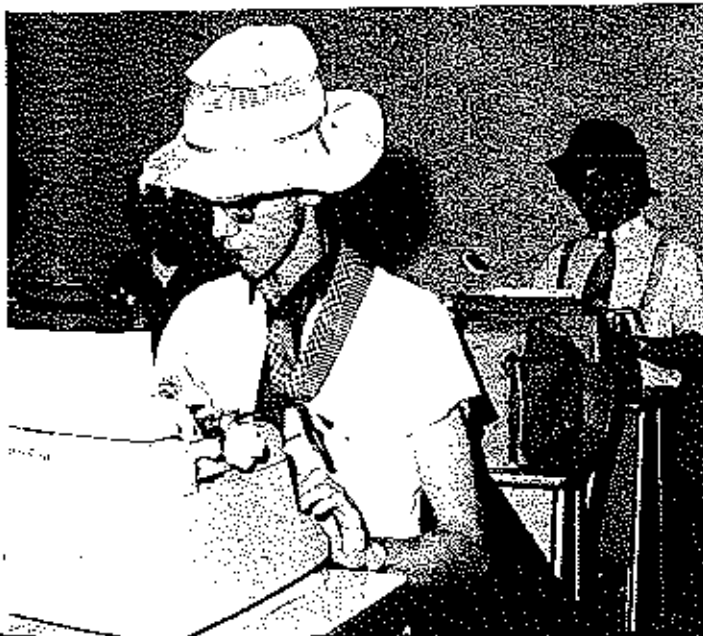


LEAP YEAR



FESTIVITIES





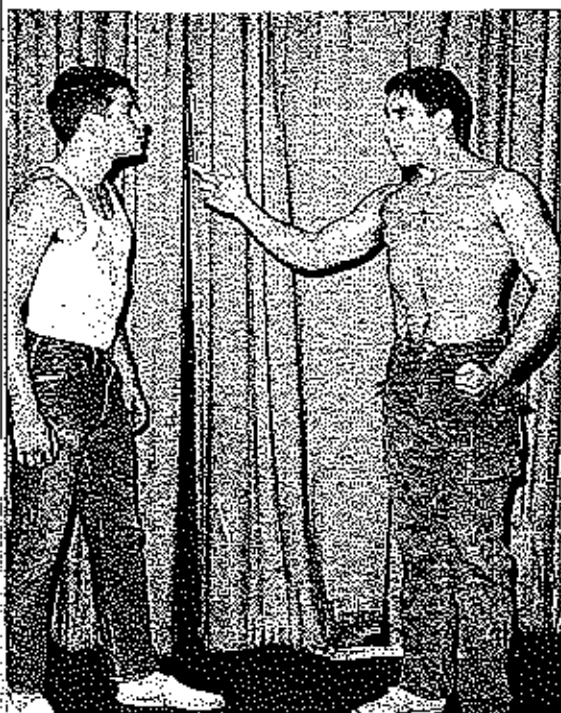


"ONE
FOOT
IN
HEAVEN"

"THREE ON A BENCH"

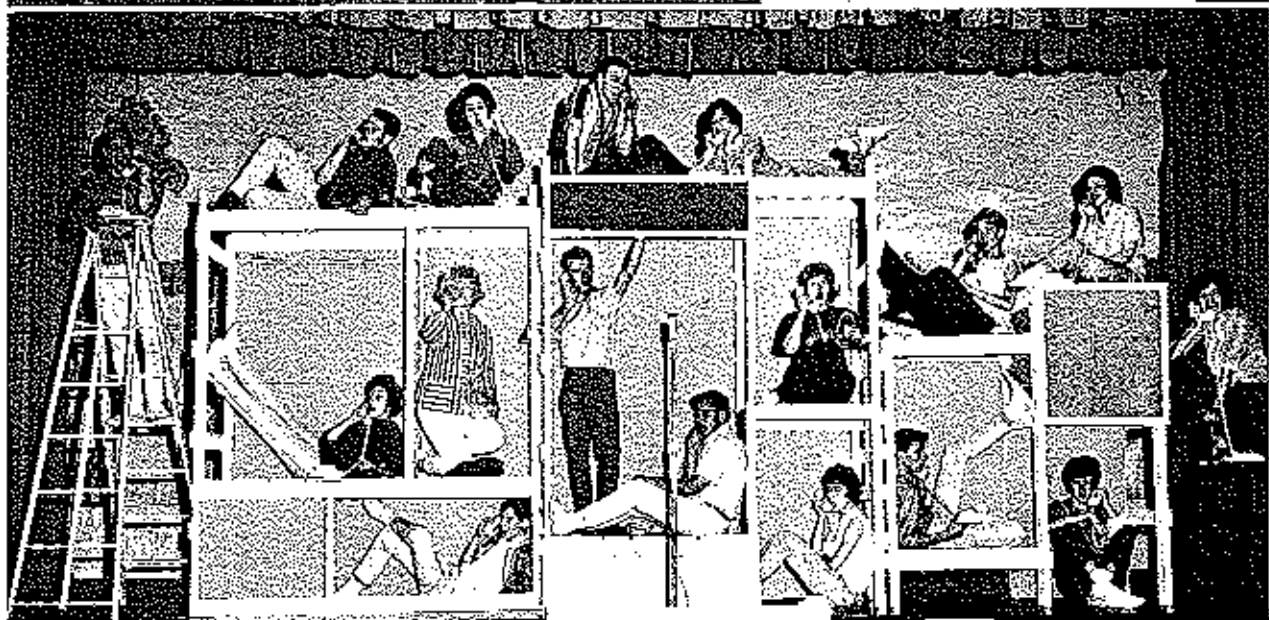


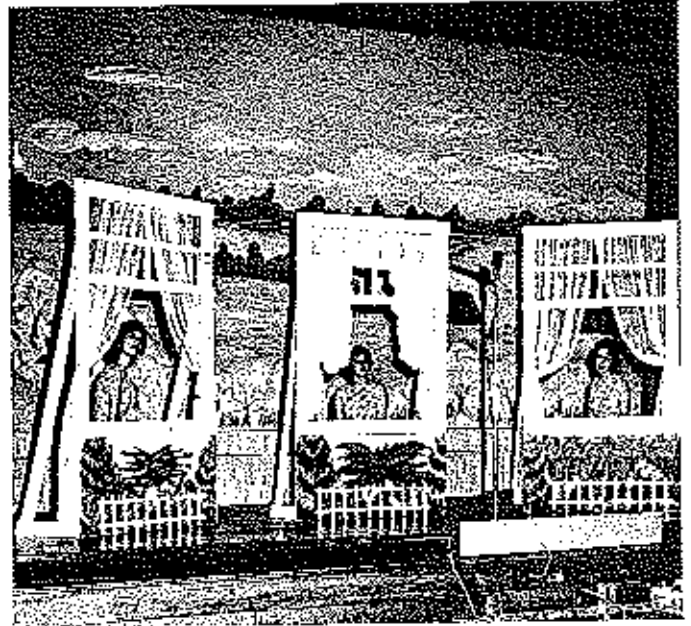
"SUBMERGED"



"ONE FOOT IN HEAVEN"

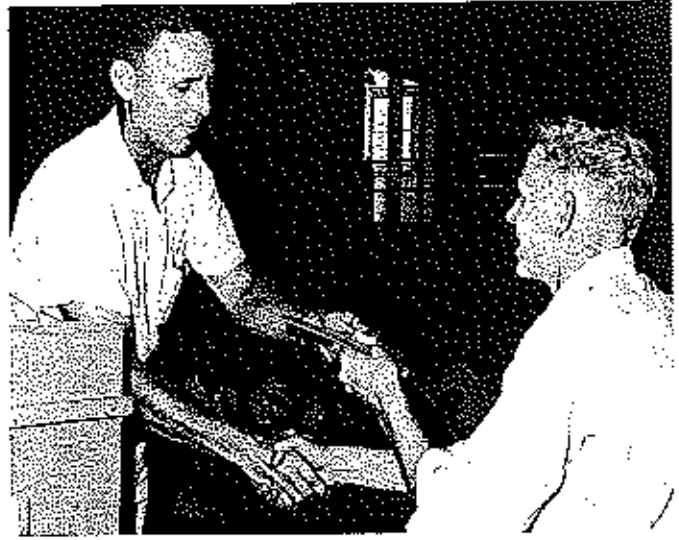
SPRING SHOW







REFRETT AWARD



OUTSTANDING SENIOR IN AGRICULTURE

AWARDS



MAROON & GOLD AWARD



AAUW AWARD

ASSEMBLY



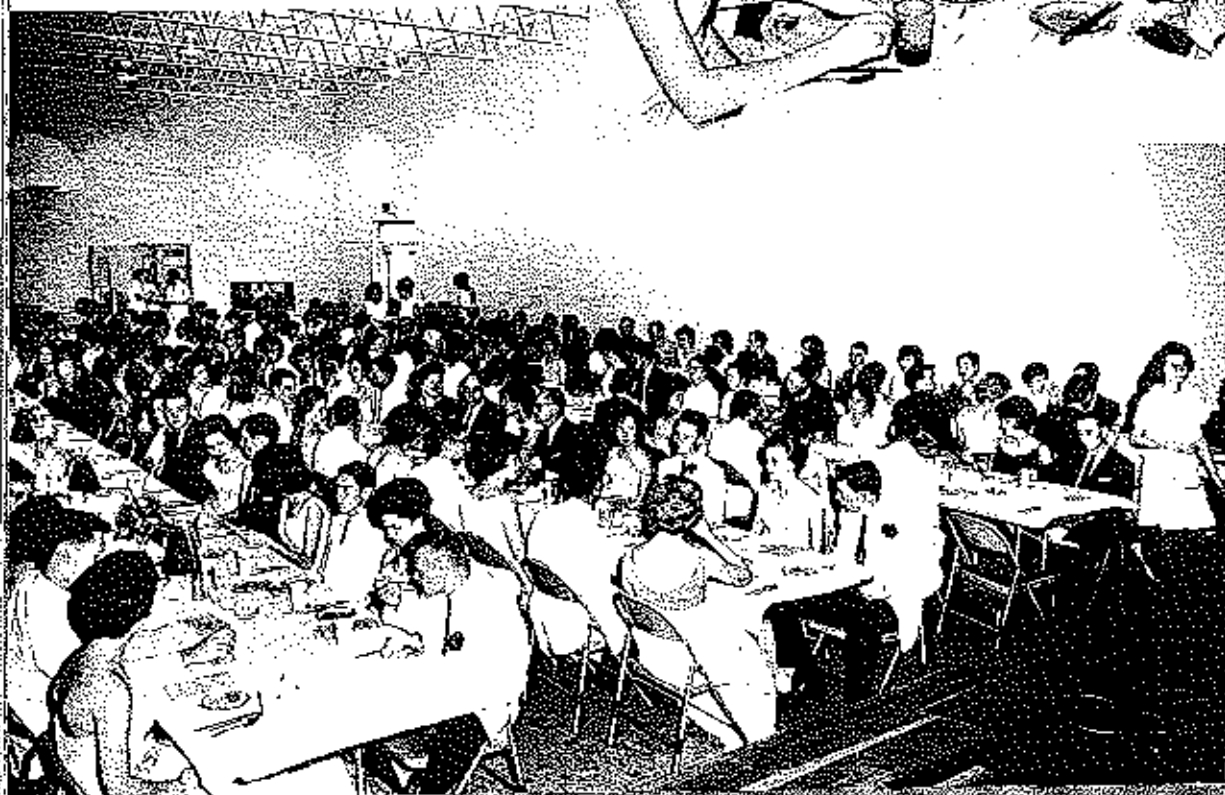
EIJTERPEAN ENGLISH AWARD

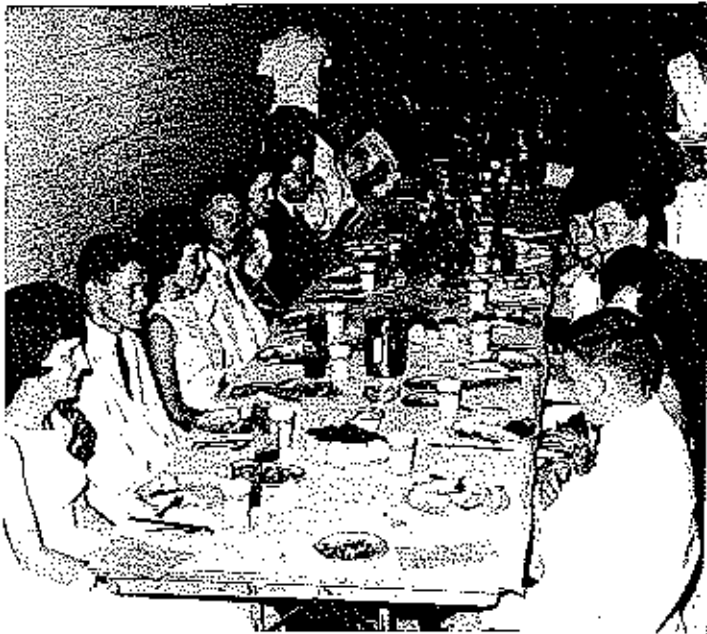


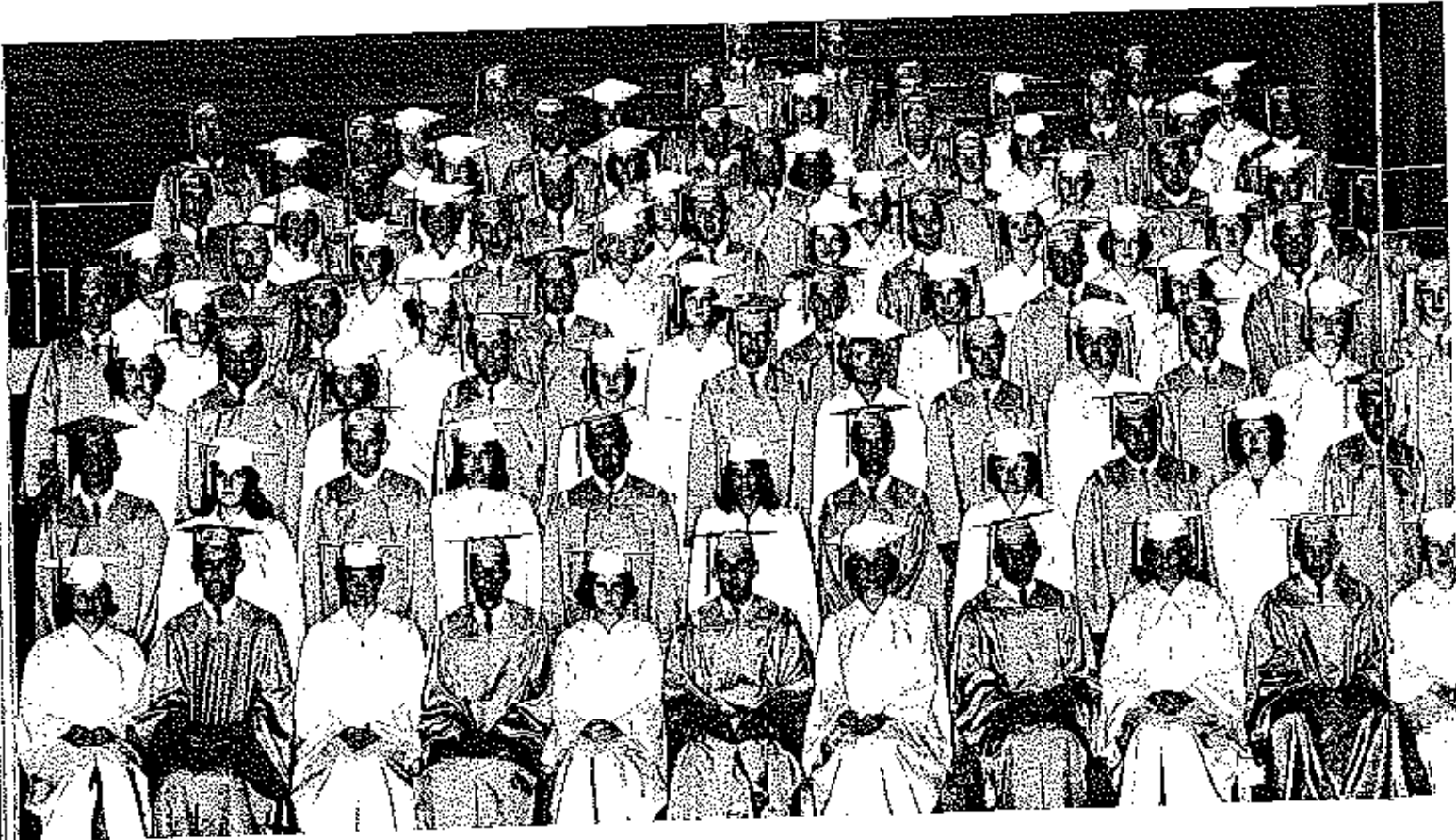
GOD & COUNTRY AWARD



JUNIOR-SENIOR
BANQUET AND
PROM







SENIOR CLASS 1963-64



SENIOR CHORUS



VALEDICTORIAN

Larry Rice

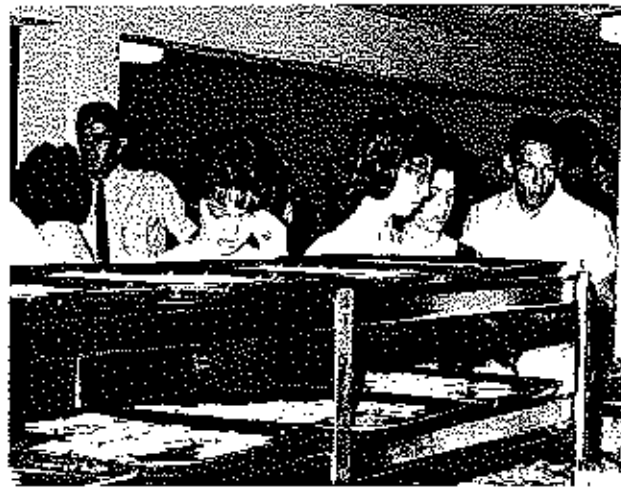
SALUTORIAN

Joyce Allen





SENIOR DINNER



ORGANIZATIONS



IER

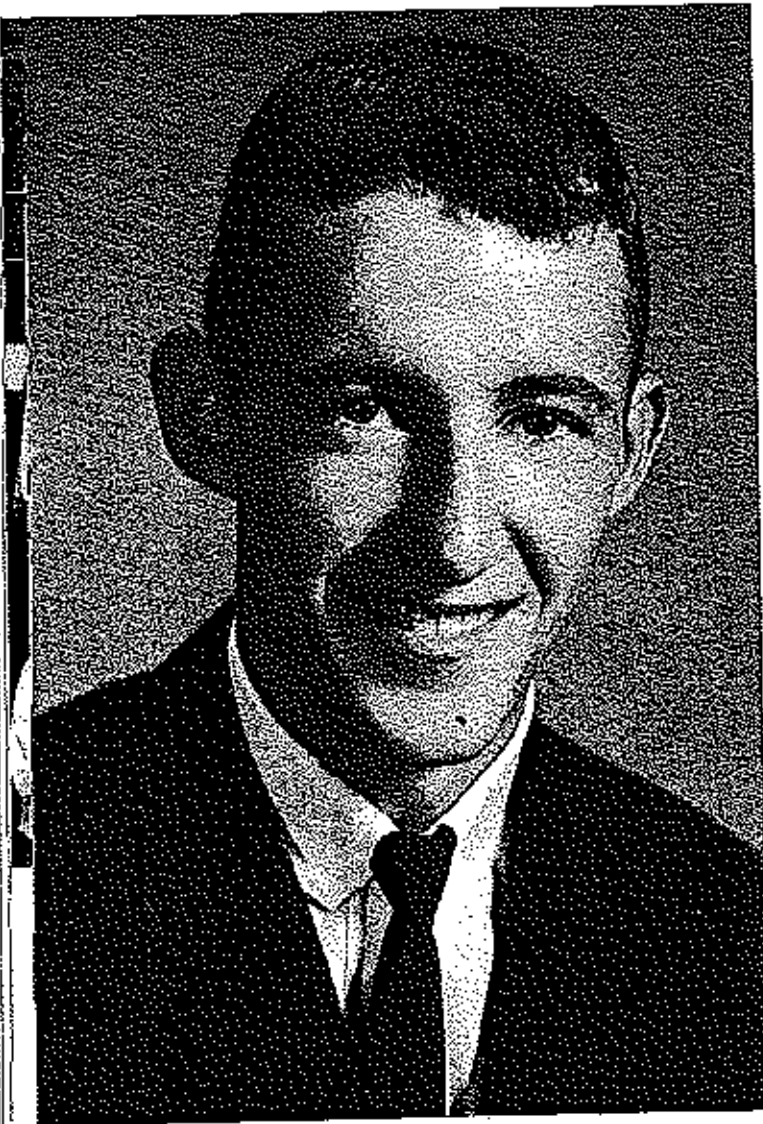


PRAZO DE TOROS MONUMENTAL
MARIANO GONZALEZ
DIEGO PUERTA
PACO CAMINO

JUSTICE
FAITH

ELDON CHAPTER
C.O.E.
OCCUPATIONAL EDUCATION
STUDENT-SCHOOL-EMPLOYER
ELDON, MISSOURI

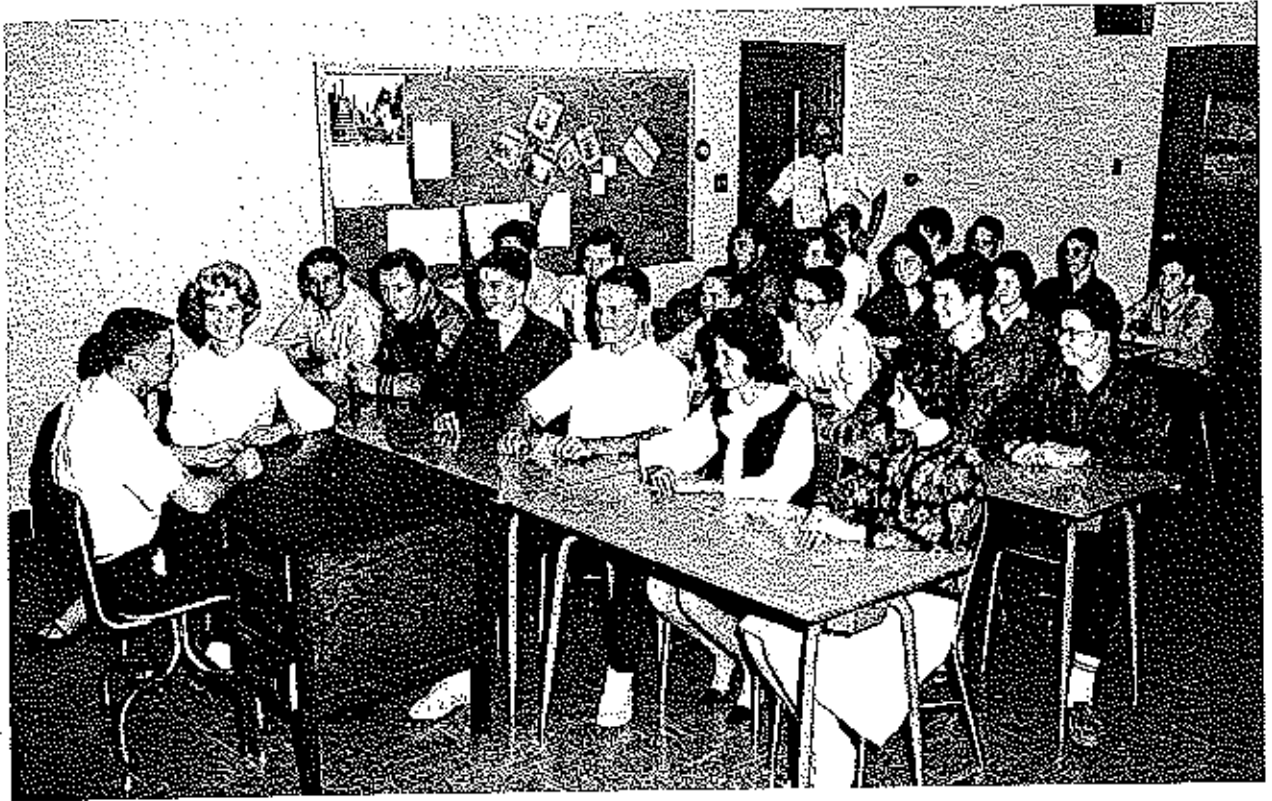
FUTURE HOMEMAKER
OF
AMERICA



Howard Milburn, Student Council President



Student Council



SEATED at desk: Howard Milburn and Barbara Simmons, Charicy Taylor, Gary Carrender, Bill Wachob, Richard Claxton, Diana Opie, Suzanne Kreiling. SECOND ROW: Richard Wood, Randy Vernon, Leroy Porter, Roger Hill, Barry Biselx, David Milburn. THIRD ROW: Charlie Clark, Cathy Frank, Paula Mosher, Sara VanHooser. FOURTH ROW: Rita Imlex, JoAnn Jacobs, Don Vansel, Sonny Runyan, Tommy Schuster, Mr. Ross Brush, Sponsor.

VICE-PRESIDENT



Diana Opie

SECRETARY



Barbara Simmons

TREASURER



Suzanne Kreiling

Referet Staff



SEATED: Eva North, Lane Johnston, Linda Gier, Kay Curtis, Joyce Allen, Karen Sparks, and Marilyn Jobe.
STANDING: Miss Beverly Scheparle, Sponsor, Danny Frederickson, and Sammy Clawson.

EDITOR



Karen Sparks

ART EDITOR



Joyce Allen

Maroon & Gold Staff



Supervisor: Jim Ward. SEATED: Pat Combs, Sandie Miles. STANDING from Left to Right: John Doolin, Susie Luke, Randy Vernon, Cheryl Madole, Cheryl Adcock, Mike Pyle, Larry Rice, Cludy Quigley, Bill Wachob, Marcia Jones, Marceua Young.

EDITOR



Pat Combs

ASSISTANT EDITOR



Sandie Miles

NATIONAL HONOR SOCIETY



FIRST ROW: Mr. Mooney, Joyce Allen, Bill Wachob, Mr. Gullford. SECOND ROW: Carolyn Peck, Sue Maher, Marcia Jones, Debbie Inaler, Loretta Leuthen, Clady Quigley, Cathy Shelton, Carolyn Gier. THIRD ROW: Gay Helmer, Roger Hill, Gary Dawson, Larry Rice, Leslie Shoemaker, Geneice Clawson. FOURTH ROW: Cathy Frank, Paula Mosher, Diana Opie, Lane Johnston, Pat Combs, Mary Woud, Ella Dee Burris, Becky Thacker.

Becky Thacker

Larry Rice

Loretta Leuthen



F
I
R
S
T



S
E
M
E
S
T
E
R



PRESIDENT

VICE-PRESIDENT

SECRETARY-TREASURER



S
E
C
O
N
D



S
E
M
E
S
T
E
R



Bill Wachob

Joyce Allen

Sue Pyle

BOYS' STATE

Larry Rice

Dennis Wood

Heward Milburn



er,
vy

GIRLS' STATE

Marcia Jones

Recky Thacker

Ella Dee Burris



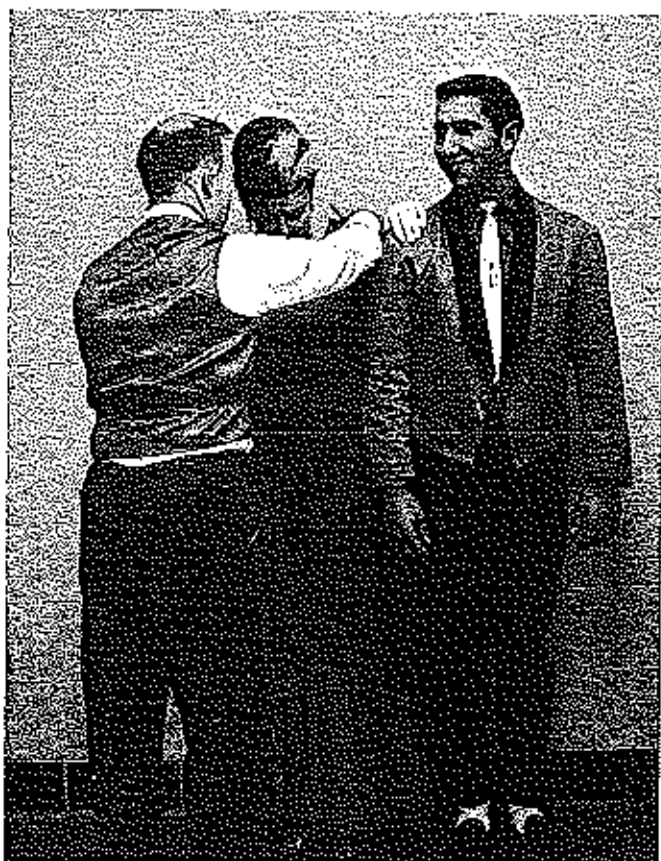
THE SPIANS



FIRST ROW: Marcena Young, LaHoma Martin, Diana Opie, Becky Thacker, Dennis Bond, Stanton Farmer.
SECOND ROW: Candy Barker, Larry McGill, Julieen Crane, Janice McDaniel, Rosemary Hader, Larry Rice, Bill Wachob, John Doolin. THIRD ROW: Cindy Quigley, Barbara Simmons, Terry Isensee, Susie Luke, Marcia Jones, Mr. Ward, Director.



These three students received I ratings at the Tri-County Speech Contest. LaHoma Martin, Public Speaking; Julieen Crane, Poetry Reading; Larry Rice, Prose Reading.



GIRLS' GLEE CLUB



FIRST ROW: Joyce Allen, Carolyn Peck, Lynne Mitchell, LaHoma Martin, Georgetta Edelman, Nancy Callison, Sally Lauderdale, Fatty Fry, Rita Imler, Debbie Bender, Karen Sparks, Cynthia Burris, Debbie Imler, Cathy Shelton, Joan Gracy, Marcia Jones, Cheryl Adcock, Christie Howset, Ella Dee Burris. SECOND ROW: Lana Tetley, Becky Thacker, Sandy Barker, Paula Mosher, Kay Curtis, Cindy Quigley, Sharon Kidwell, Candy Barker, Peggy Frederickson, Pat Payne, Meta Hoemeke, Jennie Callison, Karen Baucom, Liz Dalby, Cathy Frank, Nancy Ulrey, Kathy Crane, Koven Reed. THIRD ROW: Lovena Lewis, Linda Pyle, Gayle Minturn, Gay Helmer, Dazlene Small, Ann Shepherd, Julieen Crane, Geniece Clawson, Sherry Davis, Diana Opie, Mary Lee Rohls, Sandie Miller, Louise Campbell, Mary Wood, Nancy Jobe, Lane Johnston, Chris Pyle, Marsha Dawson, Kay Payne, Janice McDaniel, Barbara Simmons.

MIXED CHORUS



FIRST ROW: Joyce Allen, Carolyn Peck, Kay Curtis, Cindy Quigley, Lynne Mitchell, LaHoma Martin, Sally Lauderdale, Karen Sparks, Candy Barker, Peggy Frederickson, Rita Imler, Cathy Shelton, Ella Dee Burris, Marcia Jones, Christie Howset, Debbie Imler, Joan Gracy, Marsha Dawson. SECOND ROW: Lovena Lewis, Linda Pyle, Becky Thacker, Julieen Crane, Gay Helmer, Paula Mosher, Sherry Davis, Diana Opie, Geniece Clawson, Mary Lee Rohls, Sandie Miller, Cathy Frank, Meta Hoemeke, Kathy Crane, Mary Wood, Louise Campbell, Nancy Jobe, Lane Johnston, Pat Payne. THIRD ROW: Earl Atkinson, Timmy Bunch, John Beard, Robby Wolfe, Joe Vernon, Gene Dilse, Ward Bond, Steve Jones, Clifford Schupp, Larry Erickson, Steve Wood, Barry Jarrett, Don Vansel, Larry Peck, Leroy Porter, Janice McDaniels, Barbara Simmons. FOURTH ROW: Bill Evans, Dennis Wood, Mike Callison, Barry Bixel, Don Howren, Victor Bunch, David Milburn, Mike Davis, Bill Wachob, Danny Frederickson, Richard Bunch, Gary Dawson, Roger Hill, Dennis Bond, Larry Deffenbaugh, Bill Abbot, Edward Massey.

Boys' Glee Club



FIRST ROW: Joyce Allen, Joe Vernon, Robbie Wolfe, Gene Dilse, Clifford Schupp, Ronnie Claxton, Larry Erickson, Steve Wood, Scotty Jackson, Larry Peck. SECOND ROW: Earl Atkinson, Timmy Bunch, John Parkins, Ward Bond, David Milburn, Steve Jones, Dennis Bond, Roger Hill, Barry Jarrett, Don Vansel, Leroy Porter. THIRD ROW: Dennis Wood, Mike Callison, Barry Bisely, Donald Howren, Victor Bunch, Bill Evans, Mike Davis, Bill Wachob, Danny Frederickson, Richard Bunch, Gary Dawson, Larry Deffenbaugh, Bill Abbott, Edward Massey.

Band



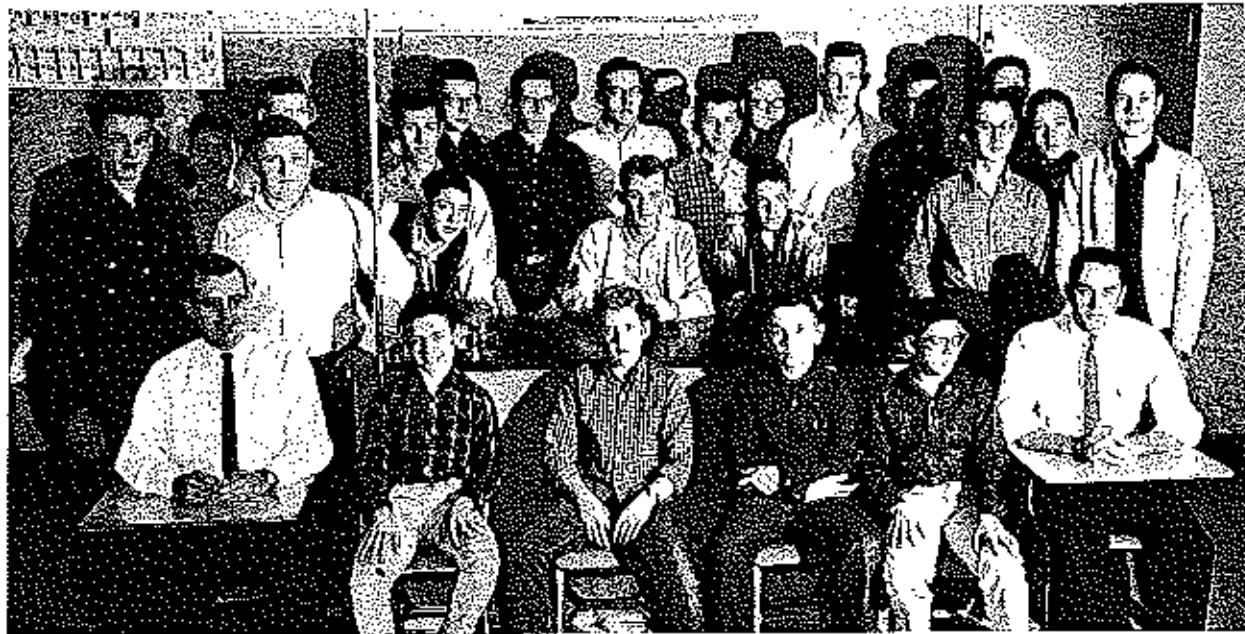
KNEELING: Patti Fry, Christie Howser, Diana Barnhouse, Kay Payne, Rita Inler. FIRST ROW: Marilya Hibdon, Rufus Harmon, Janice Scott, Nancy Ulrey, Elaine Schuster, Virginia Moots, Janice McDaniel, Suzanne Kreiling, Sharon Kidwell, Linda Hoskins, Marsha Dawson, Sally Lauderdale, Marcia Jones, Mary Wood, Lynne Mitchell, Cathy Shelton. SECOND ROW: Liz Dolby, Meta Hocmeke, Elja Dee Burris, Mike Davis, Doyle Hopkins, Donald Howren, Bill Evans, James Sanders, Howard Milburn, Wayne Hlavacek, Larry Deffenbaugh, Louise Campbell, Timmy Bunch, Lane Johnston, Joyce Fisher, Larry Erickson, John Beard, Geniece Clawson, Candy Barker, Dianna Opie. STANDING: Sammy Clawson, Sherry Davis, Pat Payne, David Milburn, Steve Jones, Steve Crane, Earl Atkinson, Danny Frederickson, Jack Holt, Jeannie Callison, Dennis Bond, Clifford Schupp, Gary Ahart, Randall Bunch, Gary Dawson, Gene Dilse, Richard Bunch.



FIRST ROW: Mr. Mooney, James Long, Dennis Wood, Darlene Ilgenfritz, Barbara Gier. SECOND ROW: Gene Daise, Frank George, Roger Eads, Bill Hibdon, Joyce Jackson, Linda Gier, Marilyn Hibdon, Sue Maher, Sandy Mites, Barbara Lowery, Nancy Jobe. THIRD ROW: James Bowlin, Earl Golden, Don Dinwiddie, Hershel Jenkins, Delbert Hayes, Curtis Atkinson, Pat Combs, Esther Cotton, Carol Tracy, Sally Flora, Carolyn Gier, Linda Williams.



Science Club



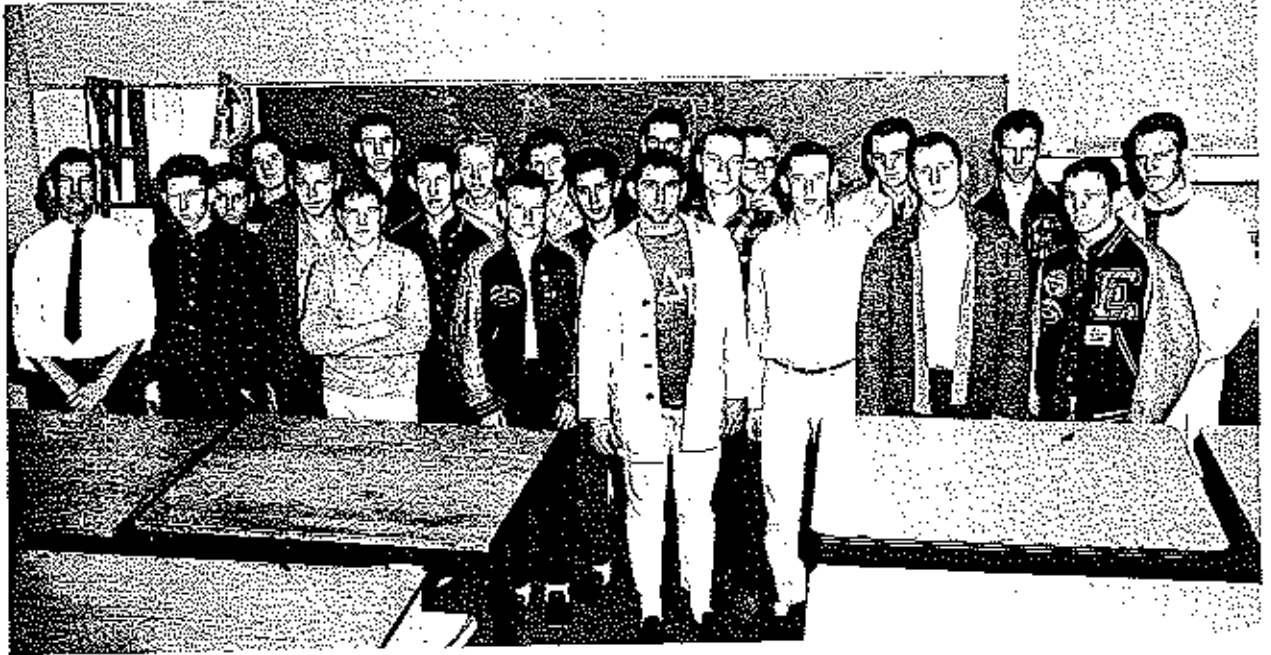
FRONT ROW: Mr. Hess, Mike Cornett, Sooty Jackson, David Eckenberger, Steve Barnhouse, Mr. Guilford.
 SECOND ROW: Steve Eckenberger, Robert Wolfe, Terry Cooley, Richard Bunch, Bill Ahluti, Greg Quigley, Kim
 Foltzman. THIRD ROW: Steve Saak, Roger Wood, David Spalding, Joe Vernon, John Smitz, Dennis Bond.
 FOURTH ROW: Steve Platz, Clet Heims, Victor Bunch, Ray Polly, Jack Holt, Bill Hodges, Kenyon Bunch.

Spanish Club

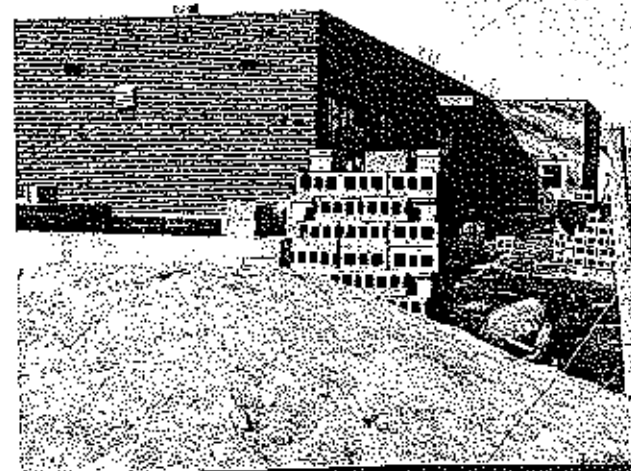
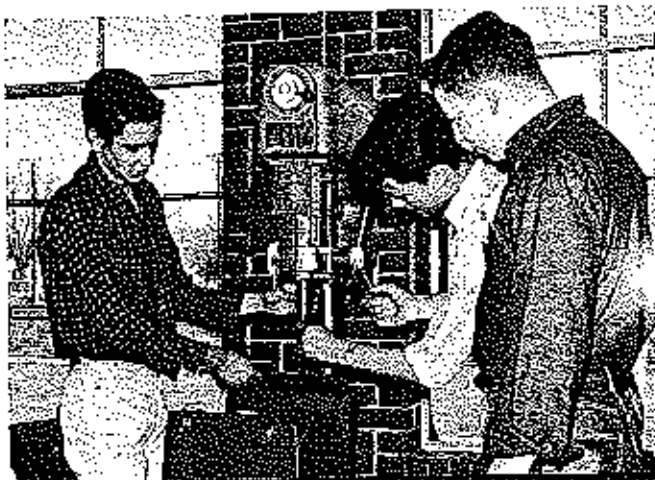


FRONT ROW: Ella Dee Burris, LaHome Martin, Eva North, Gary Small, Larry Rice. SECOND ROW: Cathy Shel-
 ton, Cheryl Adcock, Debbie Bender, Kevin Reed, Joyce Jackson, Linda Conner, Ronnie Spencer. THIRD ROW:
 Marilyn Barnhart, Elaine Buehler, Darlene Small, Barbara Cier, Leslie Shoemaker, Nancy Flora. FOURTH ROW:
 Mr. Christal, Harley MacMillan, Donnie Vernon, John Parkins, Ronnie Witt, Donald Wood.

Industrial Arts



FIRST ROW: Mr. Greenway, Don Gothard, Steve Saak, Dale Dunstan, Larry McGill, Ray Folly, Gary Carrender, Charles Taylor. SECOND ROW: Wayne Laughlin, Freddie Smock, Bob Yows, Rodger Wood, Kim Potzman, Mike Pyle, Norris Henley, Richard Claxton. THIRD ROW: Barry Jarratt, Jim Cotton, John Schupp, Steve Platz, Clet Helms, Jack Holt.



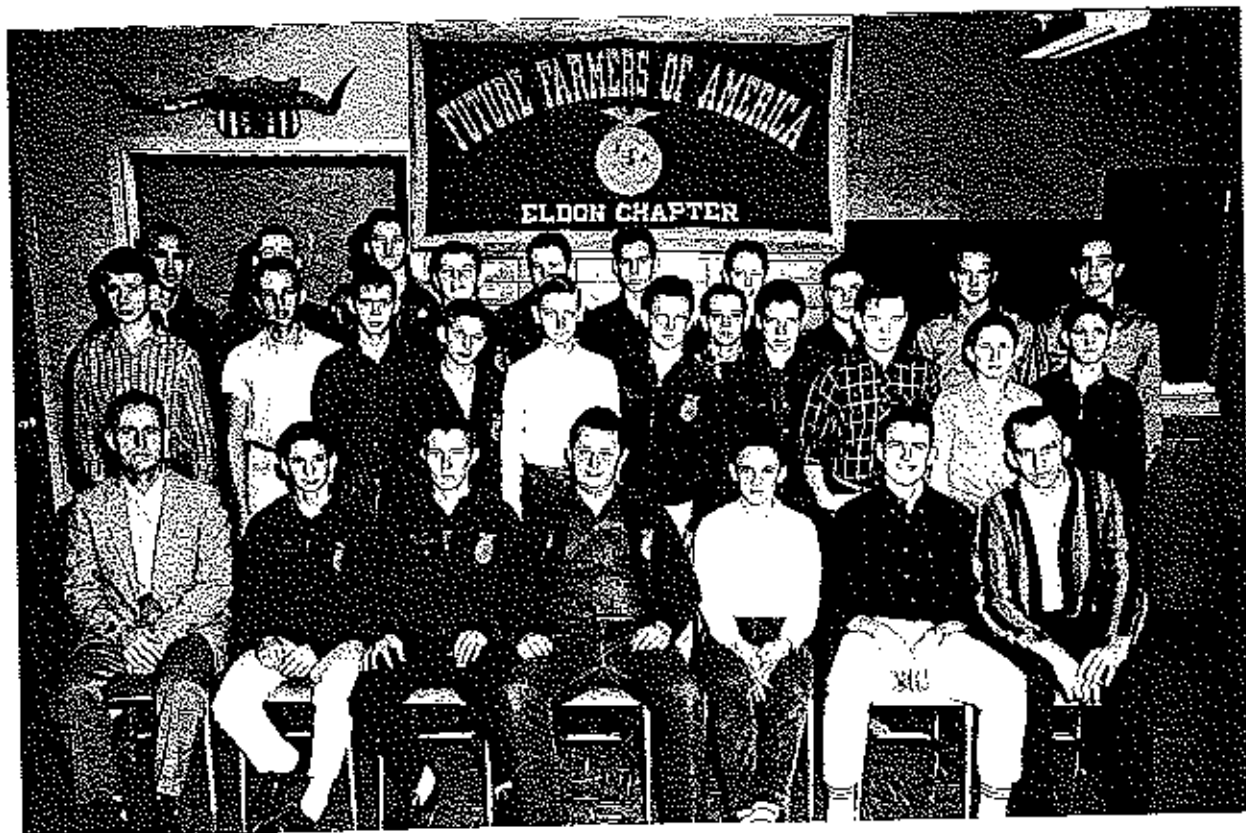
F. H. A.



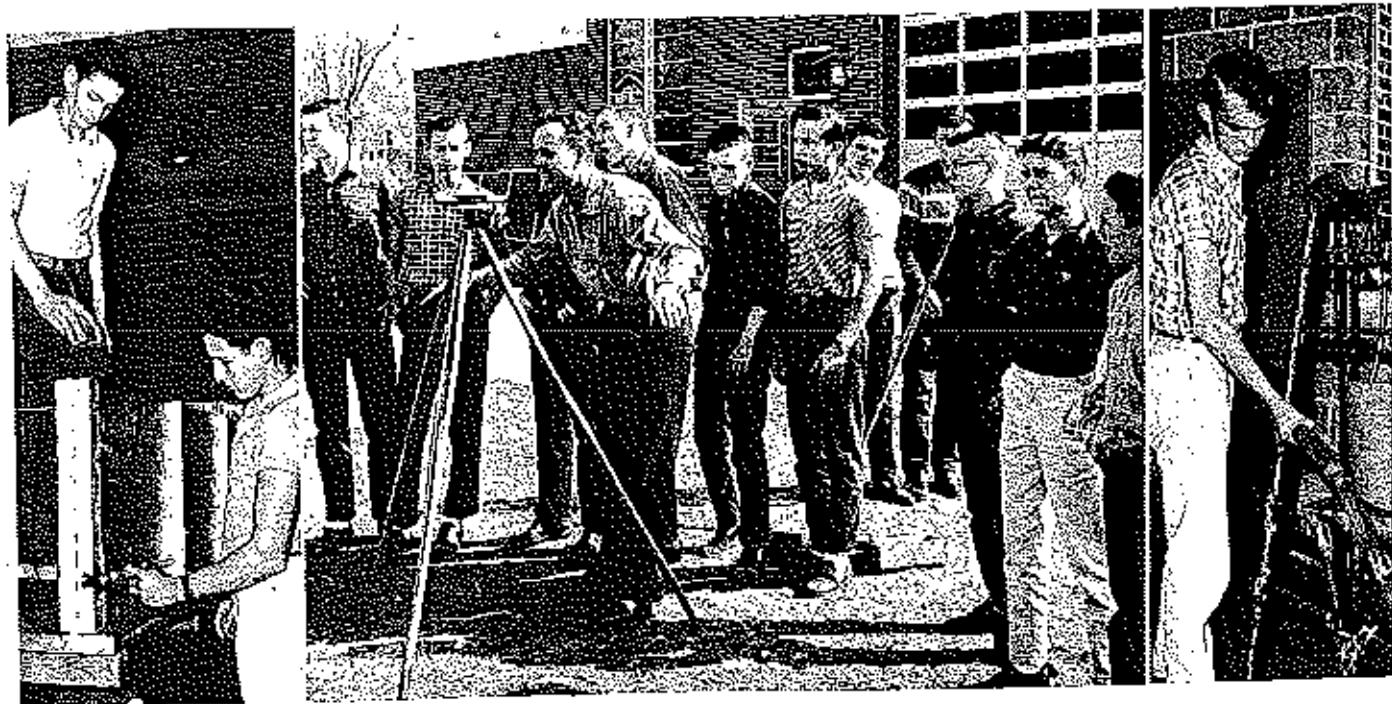
FIRST ROW: Ann Shepherd, Kay Shepherd, Loretta Leuthen, Linda Gier, Carolyn Gier, Judy Stephens, Suzanne Kreiling. SECOND ROW: LaDonn Graham, Sharon James, Judy Howser, Cerita Leuthen, Marjorie Fischer, Angela Leuthen, Rebecca Braustetter, Kay Kratzer, Linda Stockwell, Laurel Smith, Carolyn Peck, Ila Jean Whitworth, Sarah Van Hooser. THIRD ROW: Wanda Conwell, Vivian Scott, Linda Raines, Sharon Leuthen, Alvia Apperson, Anna Martin, Sue Jefferies, Ruby McConnell, Esther Cotten, Dixie Thompson, Judy Currence. FOURTH ROW: Sharon Popp, Cynthia Purris, Jeannie Callison, Carolyn Kneuschield, Dixie Opie, Rosemary Hader, Barbara Gier, Nancy Schulte, Alanda Kelsey, Sandie Miller, Sharon Kays, Kathy Jefferies, Jackie Kimball, Lois Schupp. SIXTH ROW: Faye Winters, Patsy Crouch, Charlotte Hackler, Sharon Cooper, Joyce Allen, Betty Clenin, Beryl Jean Vaughn, Joan Gracy, Linda Conner, Marilyn Jobe.



F. F. A.



FIRST ROW: Mr. Greenway, Morris Pearson, Russell Thonson, Sennie Duffield, Leroy Porter, Donnie Bond, David Taylor. SECOND ROW: John Sanning, Dennis Rand, Paul Howser, Steve Pearson, Floyd Harbison, Romule Procter, Carl Simmons, Leroy Kempker, Roger Thonson, Larry Pletzer. THIRD ROW: Jimmy Hatch, Floyd Ouderkirk, Doug Campbell, Tommy Smith, Gary Wye, Philip Wood, Larry Peck, David Cox, Larry Baysinger, Paul Buchanan, Doug Kuster.

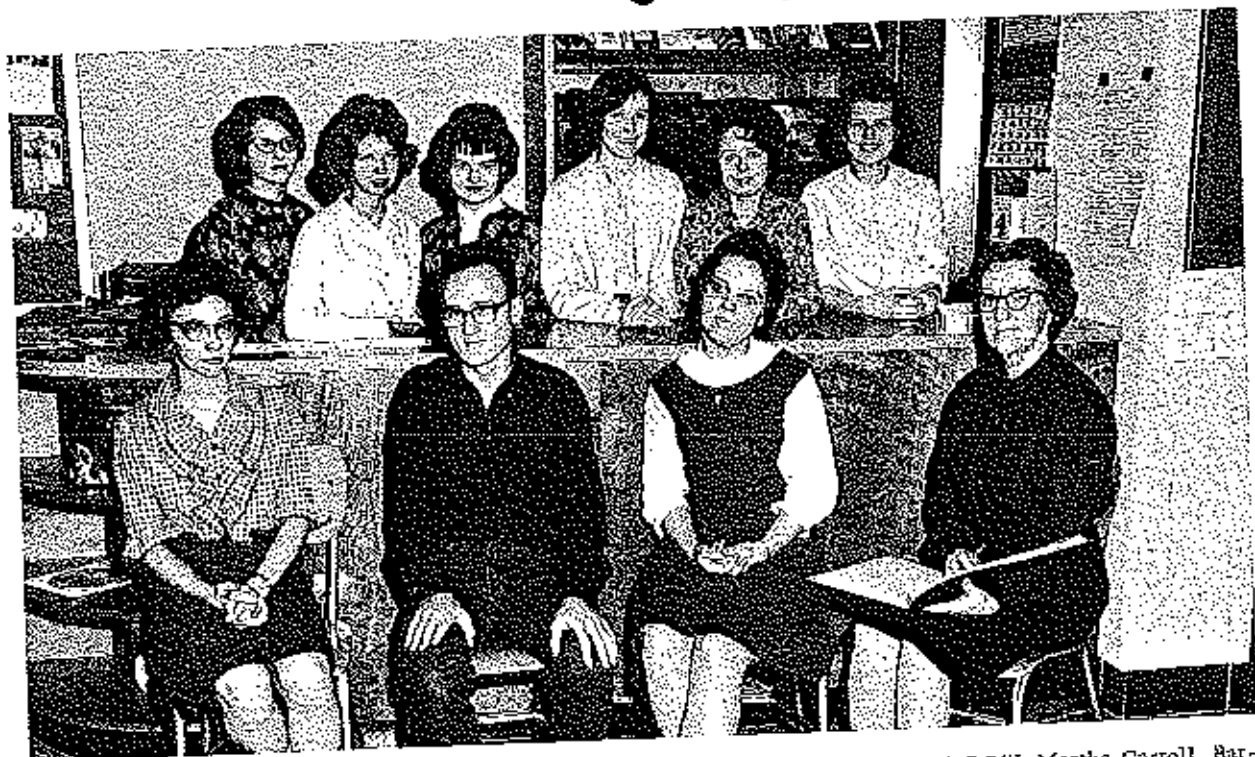


Office Workers



FIRST ROW: Laurel Smith, Rosemary Hader, Nancy Callison, Joan Gracy, Meta Hoemeke, Karon Sparks, Joyce Allen, Diane Burnhouse. SECOND ROW: Valetia Wim, Sandy Miles, Barbara Cier, Diana Opie, Lane Johnston, Darlene Hgenfsitz, Suzanne Edwards.

Library Staff



FIRST ROW: Alvia Apperson; Stanton Farmer, Paula Mosher, Mrs. Lupardus. SECOND ROW: Martha Carroll, Barbara Beanland, Margaret Kimball, Linda Pyle, Betty Kempker, Barbara Kimball.

"E" Club



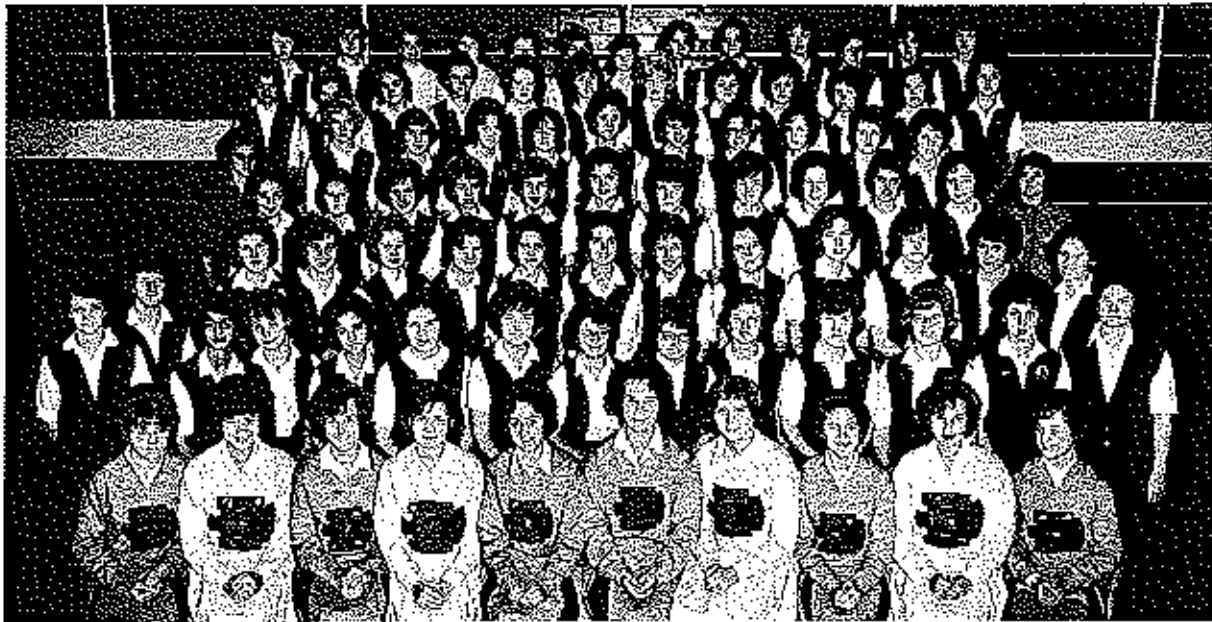
John Doolin, Bob Yows, Roger Hill, Wayne Hlavacek, Dayle Dunstan, Steve Jones, Charlie Taylor. SECOND ROW: Gary Carrander, Howard Milburn, Gary Small, Larry McGill, Larry Daffenbaugh, Terry Isensee, Charlie Clark, Bill Hall, Don Dinwiddie. THIRD ROW: Donald Howken, Richard Claxton, Roy Crigler, Doug Campbell, Mike Pyle, Norris Henley, Dwsin Sachs, Jerry Haggerman, Coach Hodges.

G. A. A.



Darlene Small, Carol Stockwell, Kay Kratzer, Marilyn Barnhart, Linda Stockwell, Laurel Smith, Marena Young, Dianne Barnhouse, Margaret McBroom, Sandy Miller. SECOND ROW: Cynthia Burris, Alanda Kelsey, Liz Dolby, Sally Flora, Eva North, Nancy Flora, Anita Lake, Kay Shepherd, Pat Combs, Lynne Mitchell. THIRD ROW: Jeanie Callison, Nancy Callison, Chris Pyle, Laslee Young, Elaine Buehler, Phoebe Hurtubise, Linda Rains, Marela Jones, Susie Luke. FOURTH ROW: Geniece Clawson, Joan Gracy, Julieen Crane, Pat Payne, Sally Lauderdale, Cathy Frank, Janice Wood, Cindy Quigley, Sue Pyle.

Pep Club



FIRST ROW: Marilyn Banhart, Meta Hoemeke, Cathy Frank, Dianne Barnhouse, Mareena Young, Liz Dolby, Janice McDaniel, Elaine Buehler, Ann Shepherd, Sally Landerdale. SECOND ROW: Linda Cotten, LaDonn Graham, Sharon James, Cathy Shelton, Ella Dee Burris, Connie Horton, Karon James, Jane Kimball, Barbara Kimball, Cheryl Adcock, Kevin Reed, Sharon Kidwell, Margaret McBroon. THIRD ROW: Daren Baucom, Barbara Gier, Nancy Jobe, Marcia Jones, Lana Tetly, Nancy Callison, Diana Opie, Kay Curtis, Paula Mosher, Lovena Lewis, Linda Fyle, Christie Howser, Geniece Clawson. FOURTH ROW: Jane Watt, Sara VanHooker, Debbie Imler, Joan Gracy, Carolyn Gier, Laurel Smith, Scherry Sullius, Kay Payne, Becky Thacker, Rosemary Hader, Lane Johnston, Miss Nancy Hindson. FIFTH ROW: Kay Scott, Barbara Simmons, Marilyn Jobe, Darlene Snaill, Peggy Frederickson, Marsha Dawson, Gail Mintum, Pat Payne, Elaine Schuster, Betty Ayres, Linda Gier. SIXTH ROW: Laslee Young, Cynthia Burris, Ila Whitworth, Marjorie Fischer, Carol Stark, Gay Helmer, Sherry Davis, Mary Lee Rhols, Sandy Miller, Betty Kempker, Karen Sparks, Linda Hoskins. SEVENTH ROW: LaHorna Maritz, Kay Shepherd, Debbie Bender, Nancy Wiley, Jackie Kimball, Glenda Lambeth, Linda Golden, Alanda Kelsay, Dixie Thompson, Linda Stockwell, Linda Kratzer, Hazel Jobe, Lynn Mitchell.

"A" Cheerleaders



FIRST ROW: Meta Hoemeke, Dianne Barnhouse. SECOND ROW: Ann Shepherd, Janice McDaniels, and Suzanne Kreifing.

"B" Cheerleaders



FIRST ROW: Marilyn Banhart, Cathy Frank, Liz Dolby. SECOND ROW: Elaine Buehler, Mareena Young, and Sally Landerdale.

SPORTS



by.
ally



FOOTBALL

1963 Football Schedule

DATE	OPPONENT	WE	THEY
Sept. 13	Bourville	37	13
Sept. 20	Camdenton*	20	0
Sept. 27	Versailles*	48	19
Oct. 4	Waynesville	26	14
Oct. 11	Tipton*	32	0
Oct. 18	Osage*	47	0
Oct. 25	California*	20	13
Nov. 1	Fayette	27	7

* Denotes Conference Games

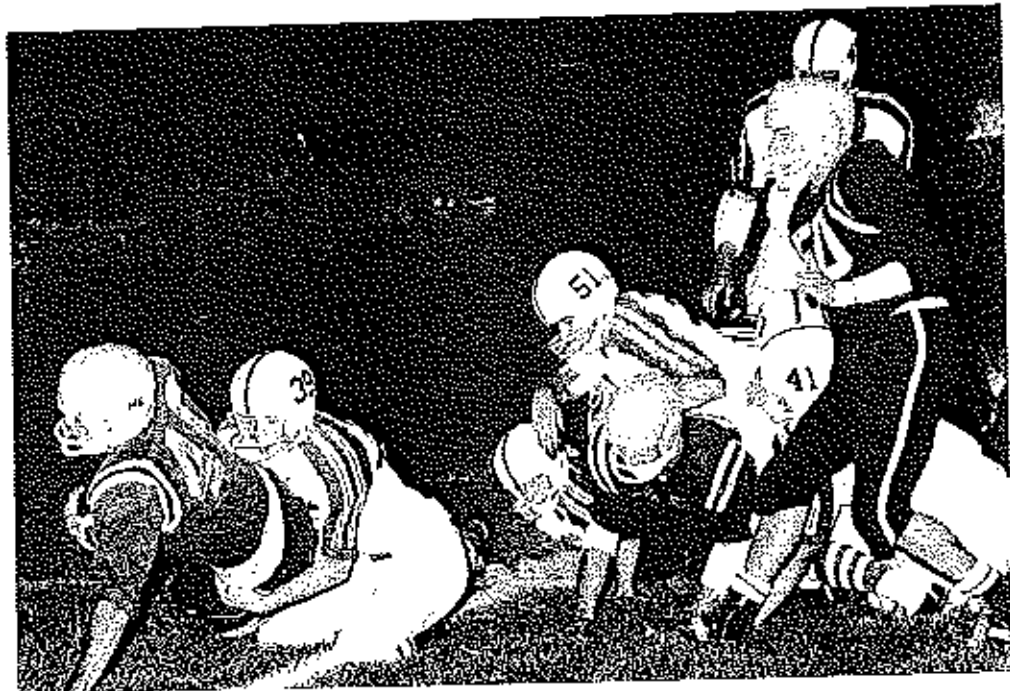




1963 FOOTBALL TEAM

FIRST ROW: Jerry Haggeman, Don Dinwiddie, Gary Carrender, Charlie Taylor, Mike Pyic, Larry McGib, Richard Claxton, Bill Evans, John Doolin, Delbert Hayes, Norris Henley. SECOND ROW: Donald Howron, Gary Small, Bob Yows, Wayne Hlavacok, John Parkins, Roger Hill, Charlie Clark, Barry Jarrett, Glen Graves, Kenneth Hunt, Terry Isensee, Howard Milburn, Doug Campbell. THIRD ROW: Coach Cleetis Helms, Roy Crigler, Bill Hall, Dwain Sachs, Hal Dohy, Mike Callison, Randy Vernon, Bill Hodges, Gary Dawson, Elmon Ruins, Coach Ed Hodges.





"A" Team

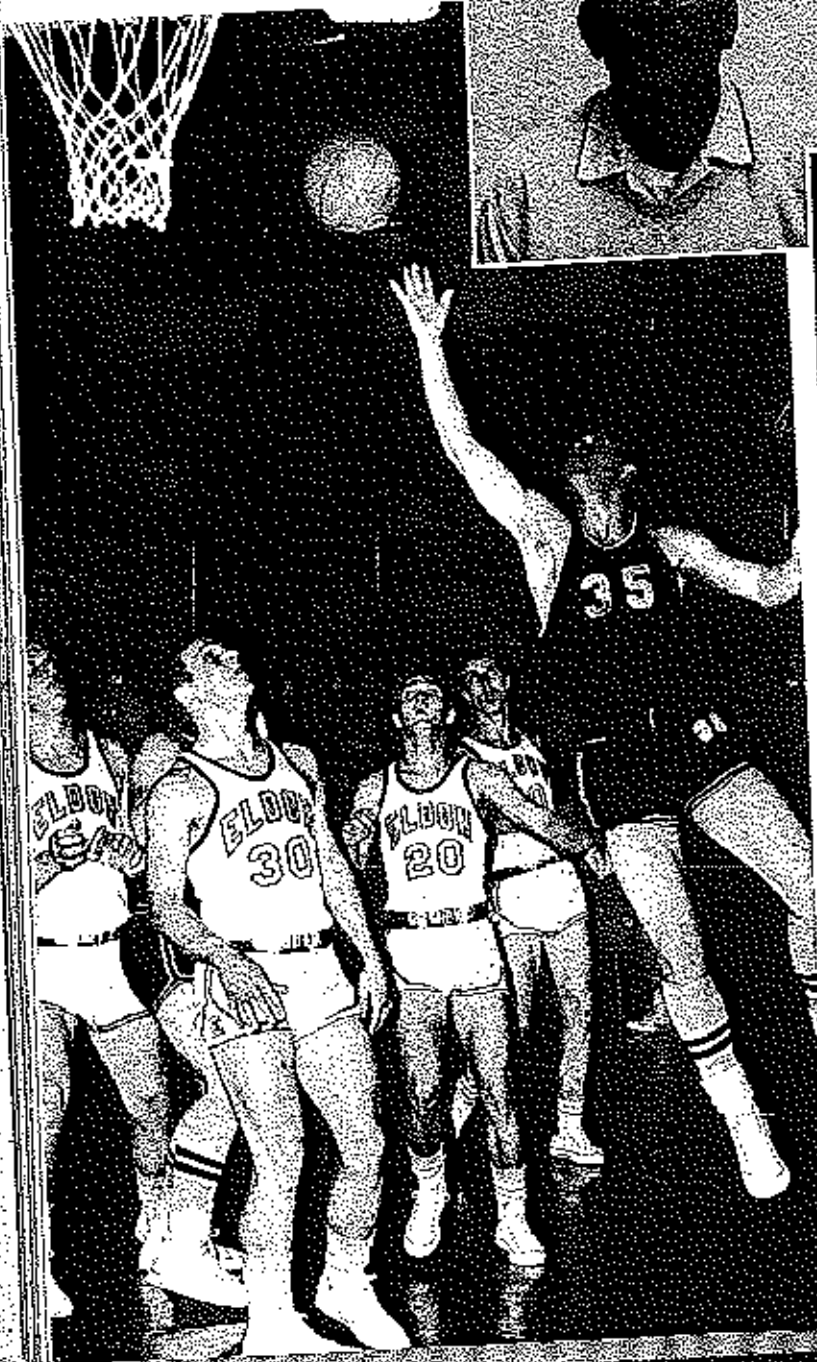


FIRST ROW: Norris Henley, Delbert Hayes, Charlie Taylor, Richard Claxton, Gary Carrender, Doug Campbell.
SECOND ROW: Howard Milburn, Roy Crigler, Dwsin Sachs, Cary Witt, Cary Small, Charlie Clark, Coach Cleis Helms.

"B" Team



FIRST ROW: Steve Jones, Frank Baackes, Ronnie Spencer, Ward Bond, Billy Cox. SECOND ROW: Dayle Dunstan, Glen Graves, Benny Poague, Jr. Reed, Donnie Vernon, Ronnie Witt, Coach Ed Hodges.





TRACK MEET RESULTS

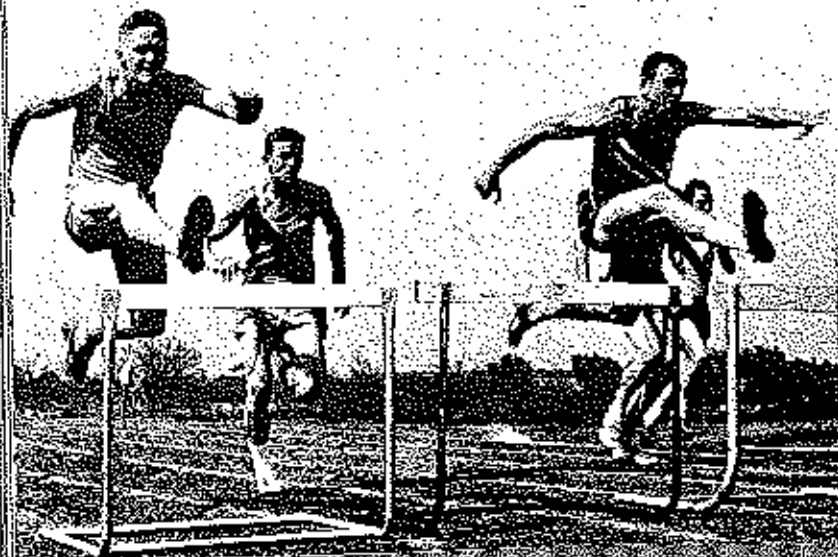
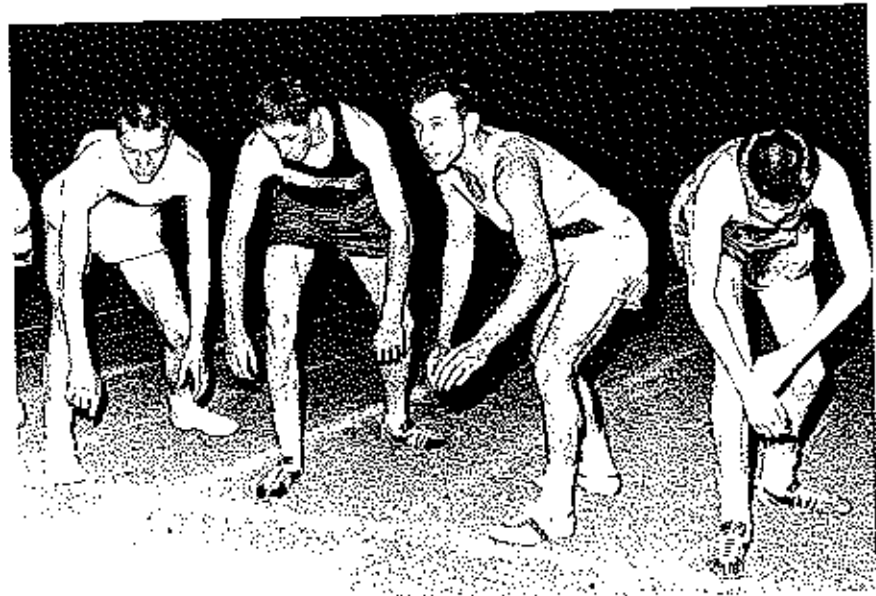
1st	2nd	3rd
California	Eldon	Versailles
California	Eldon	Camdenton

TRI-COUNTY

California	Eldon	Camdenton
District--	Eldon--	6th

TRACK





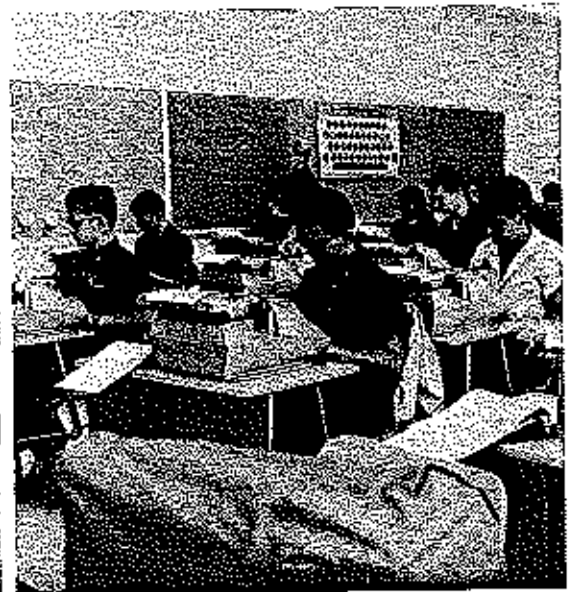
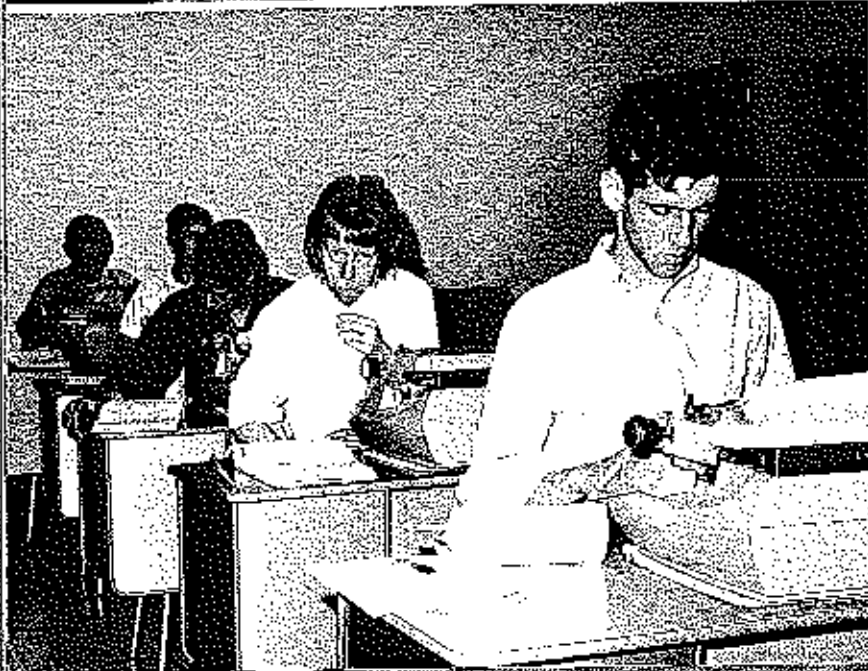
DEPARTMENTS

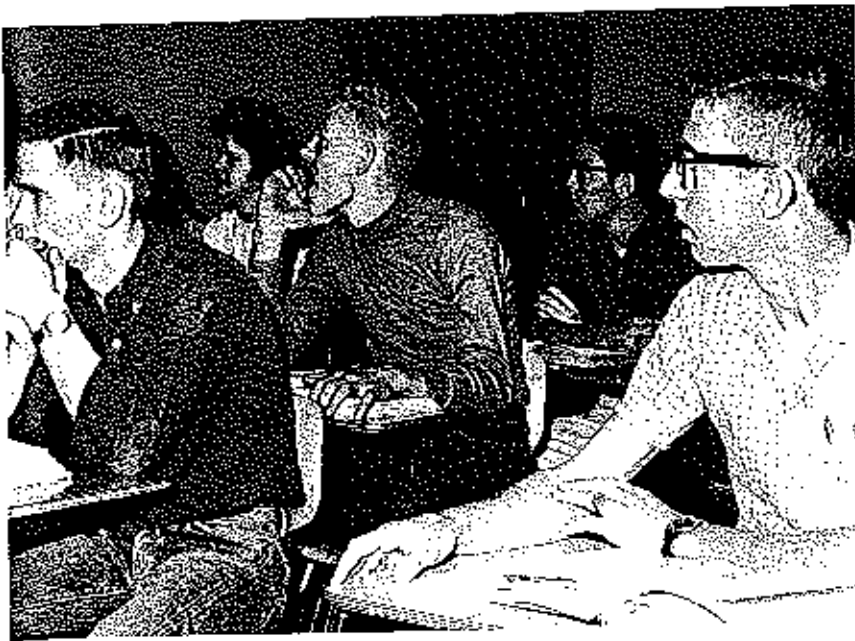


OUR DAILY LIVES

The following eight pages are a summary of the various departments of E.H.S. On these pages you will see the students busily at work at the every day duties of their school lives. The individual classes have been grouped together into the general departments of commerce, language arts, science, art, music, driver's education, physical education, agriculture, home economics, industrial arts, cooperative occupational education, math, and social studies.

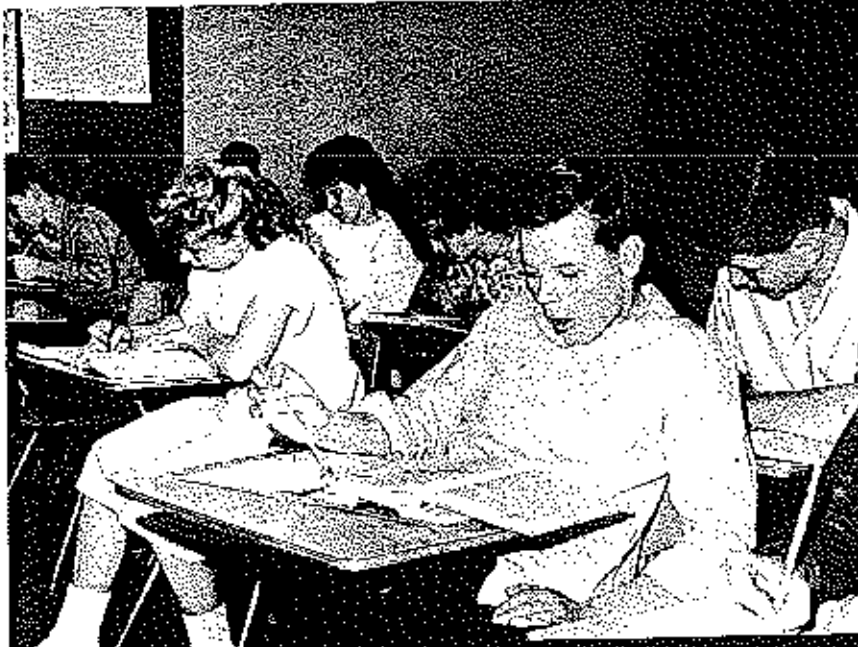
COMMERCE



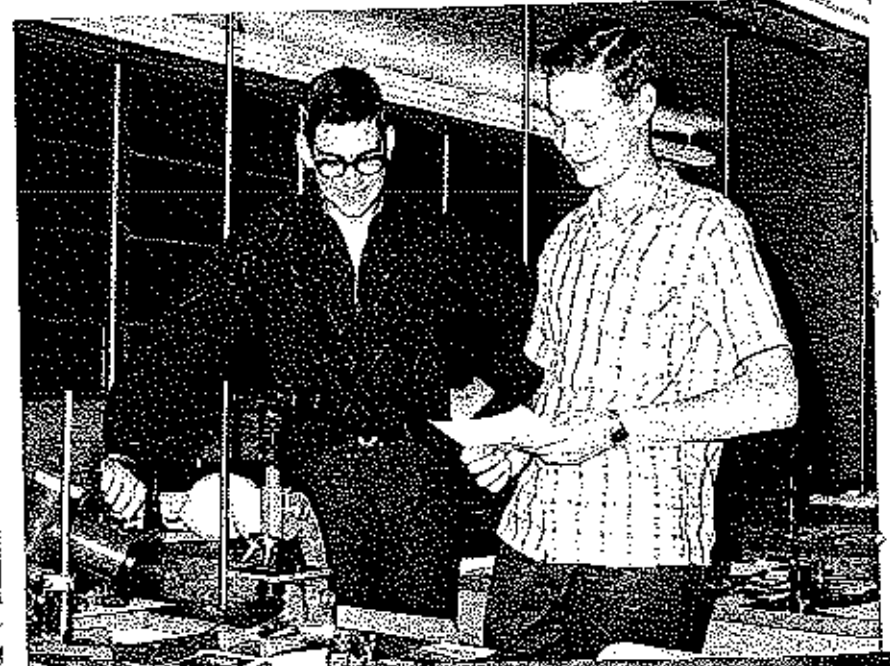


ARTS

LANGUAGE



111

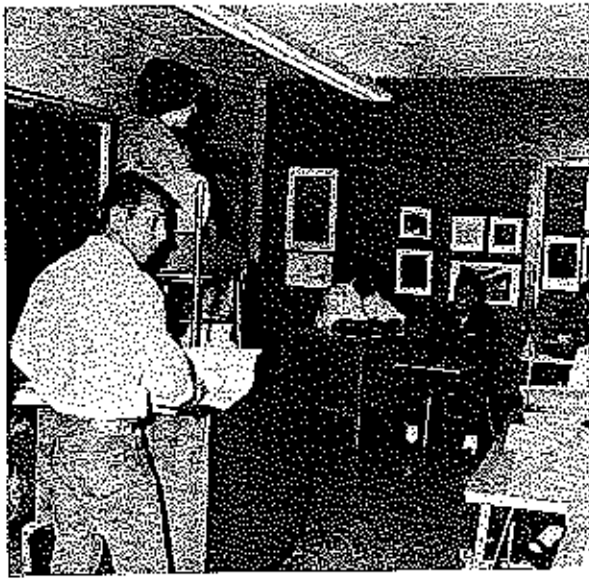




ART



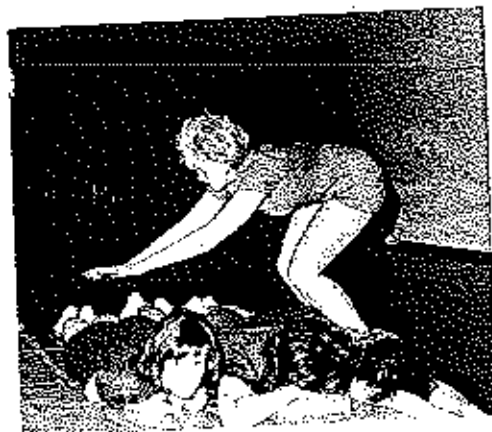
MUSIC



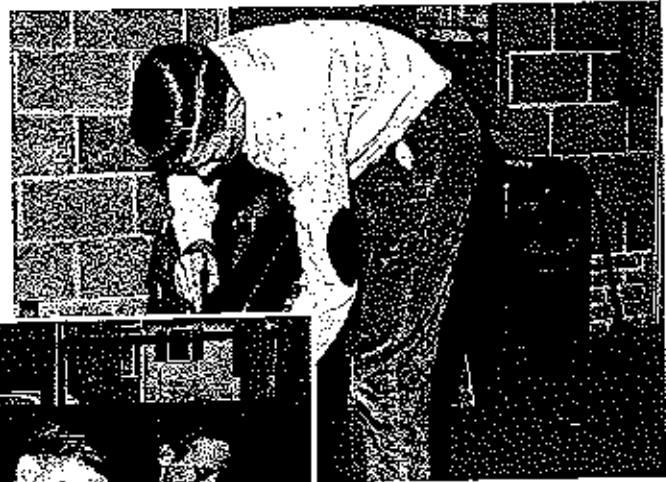
DRIVERS EDUCATION



PHYSICAL EDUCATION



AGRICULTURE



HOME ECONOMICS



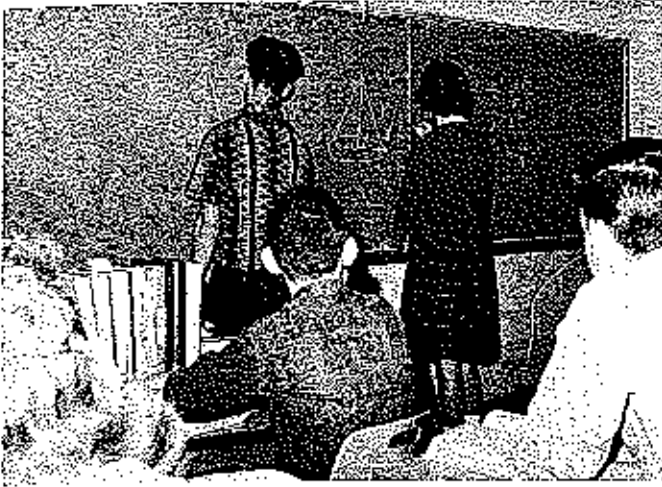
INDUSTRIAL ARTS



C.O.E.



MATH



SOCIAL STUDIES



CUSTODIANS



Bert Apperson



Ernie Miller



Raymond Marriott

C
O
O
K
S

N
U
R
S
E



SEATED: Mrs. Williams, Mrs. Boatman, Mrs. Richardson. STANDING: Mrs. Rogers, Mrs. Newton, Mrs. Vernon, Mrs. Witt.



Elsie Howren

