

A black and white photograph of a landscape. In the foreground, a large, leafy tree stands on a grassy slope. The background shows rolling hills under a bright sky. The image has a grainy, high-contrast appearance.

1968-69 Theme "Ozark
Highlights"

This is the Ozarks. This is our home. Here is where we have dreamed our dreams and pondered on things both past and present. It is here that we obtain our inspirations. It is here that we have built ourselves and our tomorrows. We have recorded the life of EHS during the 1968-1969 school year for you in photographs, designs, and comments. We trust that you will treasure your Referet.



DEDICATION

We proudly dedicate this 1969 Referet to Mrs. Ruth Lupardus. She has served the Eldon High School system well and long as a dedicated librarian.

Mrs. Ruth Lupardus obtained her degree from Washington University in Saint Louis. In 1946 she joined the Eldon school system. During her years here she has been quite active. She has been a fine librarian. She created a library club and also has sponsored the Honor Society for E.H.S. students.

On campus, she is a familiar sight to all Eldon High School students. As a librarian, she is always ready to help and advise. Her friendliness and her interest in students are recognized by everyone.

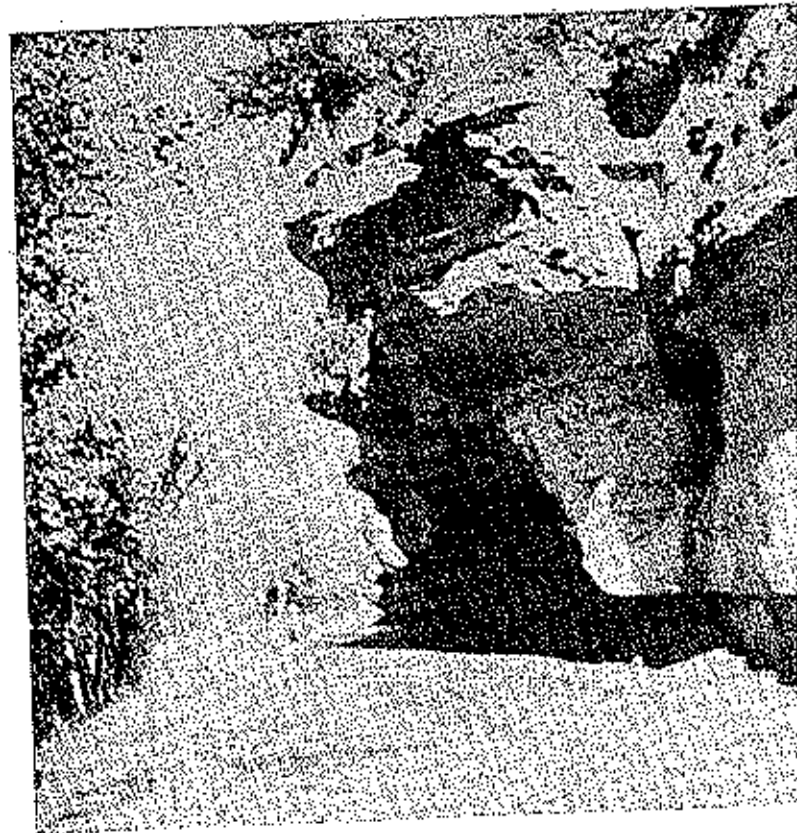
Education is her chosen field because it offers an opportunity to work with young people and help them prepare for their future.

In appreciation for her 23 years of devoted service at Eldon High School, we gratefully dedicate this 1969 Referet to:

Mrs. Ruth Lupardus



Missouri's Many Faces . . .



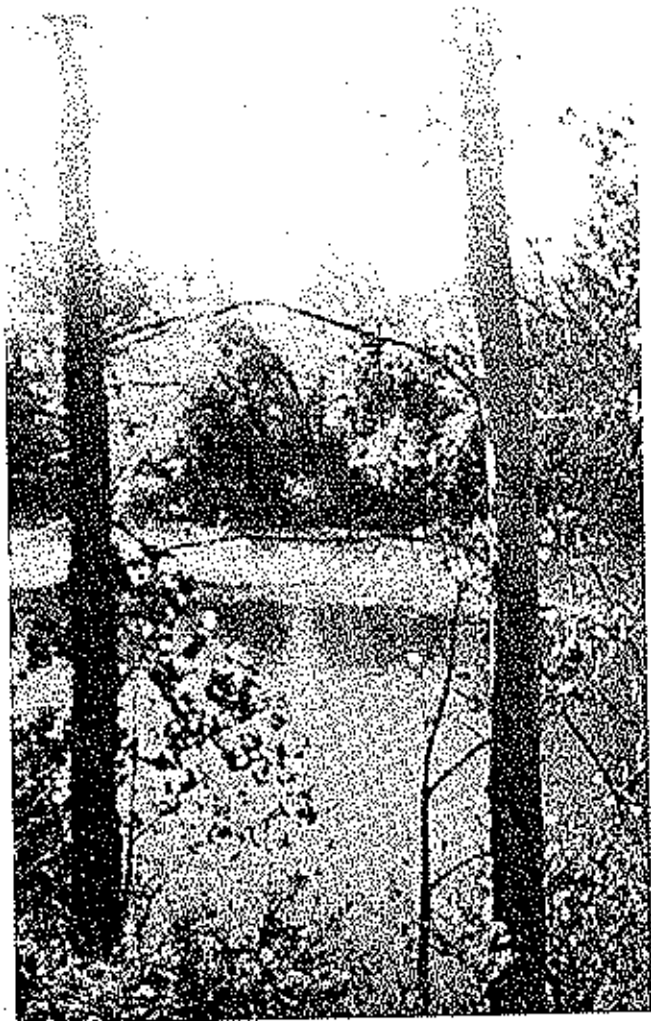


Table of Contents

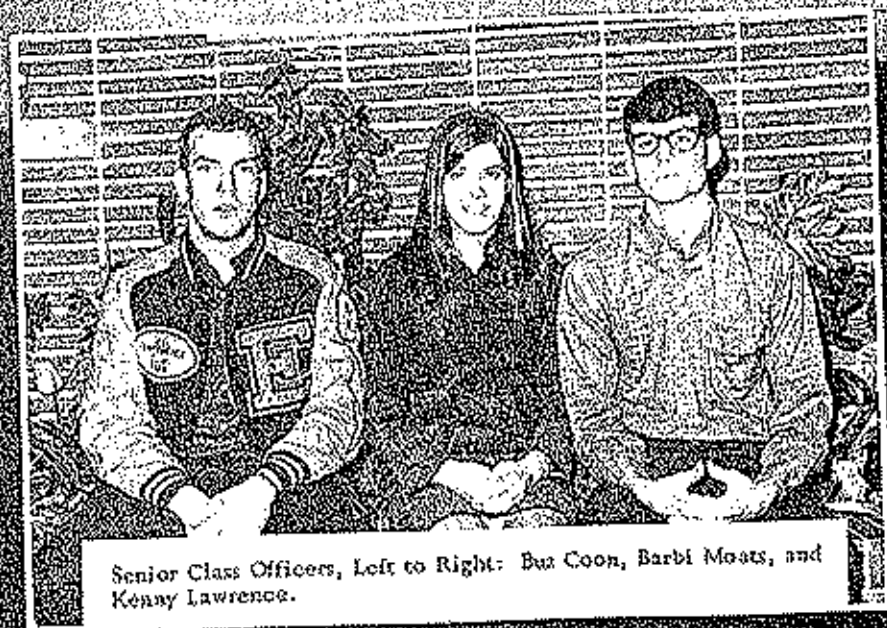
•Classes	Page 6
Seniors	Page 7
Juniors	Page 35
Sophomores	Page 40
Freshmen	Page 45
•Activities	Page 50
•Organizations	Page 65
•Sports	Page 82
•Administration and Faculty	Page 91

The four seasons come annually to
Missouri's Ozarks.

"The earth is the Lord's, and the
fullness thereof."

CLASSES

SENIORS



Senior Class Officers, Left to Right: Buz Coon, Barbi Moats, and Kenny Lawrence.



Ricky Abbott



Brenda Ahart



Paula Alexander



Catherine Atkinson



William Barker



Kenneth Barnhart



Debbie Baucom



Rhoda Bohr



Pamela Bolt



Raynold Booth



Larry Boulware



Randy Bradshaw



Kent Buchler



Karen Bunch



Milton Bungart



Deborah Byrd



Leon Clark



Susan Clark



Myron (Buz) Coon



Olive Cotton



Becky Crouch



Richard Currence



Daniel Davis



Brenda DeGraffenreid



Michael Dowler



Kathy Duncan



Dorothy Dusenberry



Douglas Edwards



Sheila Fairchild



Cheryl Farris



Sheryl Fisher



Rodney Fitzpatrick



Bill Flaugh



Janice Fletcher



Byron Flora



David Foley



Lynn Gamphor



Linda Golden



Robert Golden



David Graham



Thomas Graham



James Green



Gary Hatch



Brent Helton



Thomas Hendrix



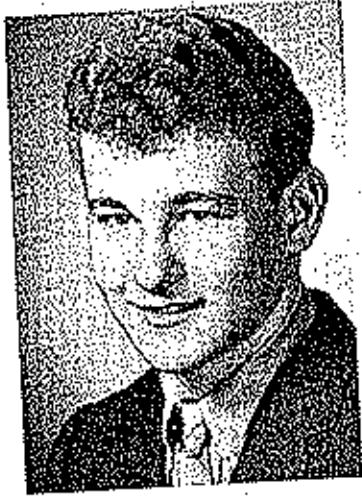
James (Happy) Henley



Klausy Hill



June Hlavacek



Roger Hollenback



Lynda Houghton



James Hutton



Diana Imler



Donna James



Dinah Jarrett



Randy Jenkins



Susan Jett



David Kempker



Mary Kirkpatrick



Franz Kocck



Beverly Koerner



Stanley Kovell



Kenneth Lawrence



Pamela Leffert



Brenda Lewis



Mary Jane McBroom



Charles McKinley



Linda McLaughlin



Linda Manning



Ann Massey



Mary Kay Melton



Larry Mitchel



Barbara Motts



Carl Mosher



Gary Mueller



Danny Opte



Rhonda Payne



Mack Pearson



Janet Porter



Frank Procter



Keith Quick



Fred Rand



Robert Reed



Andy Regalado



Gary Rentfro



Richard Roark



Brenda Richardson



David Robb



Richard Sale



Cleatus Sanders



Judy Schmitt



Michael Schupp



Carolyn Scrivner



Robert Shoemaker



Larry Sears



Darlene Simpson



Deborah Smith



Rita Snodgrass



Stephen Spencer



Kathy Stone



Barbara Sullins



Linda Sweaney



Howard Thacker



Margorie Thomson



Barbara Topliff



Diane Vaughn



Lloyd Vernon



David Weaver



Michael White



Virginia Whitney



Marjorie Whittle



Debbie Widmer



John Wieneman



David Williams



Kathy Williams



Sonja Williams



Patricia Wilson



Phyllis Winkler



George Witt



Larry Wood



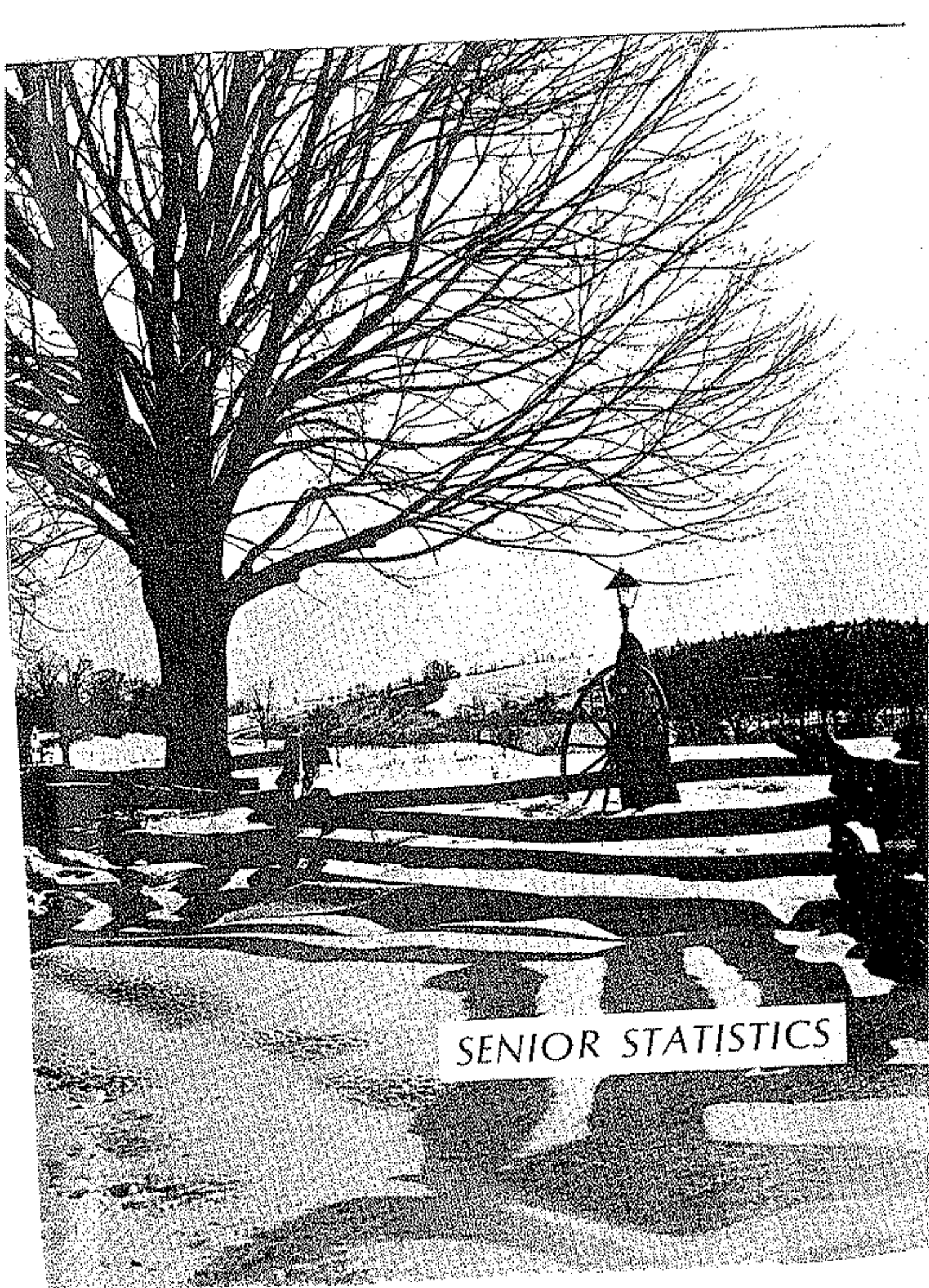
Jerry Workman



Carol Worthey



Rebecca Zimmer



SENIOR STATISTICS

Abbott, Ricky: Basketball 1-3.

Ahart, Brenda: Glee Club 1,2; Spring Show 1,2; Music Contest 1,2; Messiah 2; Christmas Program 1,2,4; Referee Staff 4; Pep Club 1,2,3; Honor Society 2,3,4; COE 3,4; Student Council 2,3; Class Officer 1,3; Girls State 3; Popularity & Beauty Princess 4; Junior Maid 3.

Alexander, Paula: Glee Club 1; COE 3,4; FHA 2,3.

Atkinson, Catherine: Glee Club 1-4; Chorus 2-4; Band 1-4; Spring Show 1-4; Music Contest 1-4; Messiah 2; Vocal Clinic 1-4; Christmas Program 1-4; Speech Contest 4; Girl's Basketball 2,3; Track 1-4; C.A.A. 1-3; Thespians 3,4; Thespian President 4; One-Act Play 3,4; A.F.S. 4; Three-Act Plays 3,4; Fall Festival 1; Girls State 3.

Barker, William: Spring Show 2,3,4; Industrial Arts 1,2,4; Science Club 1,2.

Barnhart, Kenneth: Christmas Program 4; Speech Contest 4; Honor Society 3,4; Football 2,4; Track 1,3,4; E Club 4; One-Act Play 4; Library Worker 1; District Shorthand Contest.

Baucorn, Debra: Glee Club 1-3; Spring Show 1-3; Music Contest 1-3; Messiah 2; Vocal Clinic 1-3; Christmas Program 1-3; Pep Club 1-4; Student Council 1; Fall Festival 1; Freshman Maid; Class Officer 2,3; Homeroom 1-3; Homecoming Candidate 4; Popularity & Beauty Princess 4.

Bohrn, Rhoda: Pep Club 4; FHA 4.

Bolt, Pamela: Glee Club 1-3; Band 1,2; Spring Show 1-3; Music Contest 1-3; Messiah 2; Vocal Clinic 1-3; Christmas Program 1-3; Pep Club 1-4; Girl's Basketball 2-4; Girl's Track 4; G.A.A. 1-4; FHA 1; Science Club 3,4; Treas.

Booth, Raynold: Glee Club 1; Chorus 1; Baseball 1,2; Track 1; COE 3,4; Science Club 2.

Boulware, Larry: COE 3,4; Industrial Arts 1,3; FFA 3.

Boyd, Sharon

Bradshaw, Randy: Band 1,2; Spring Show 1; Basketball 1; COE 3,4.

Buehler, Kent: Referee Staff 2-4; Editor 4; Basketball 1; Industrial Arts 1; Spanish Club 2; Science Club 1-3; Thespians 4; One-Act 4; Three-Act Play 4.

Bunch, Karen: COE 3,4; FHA 2,3.

Bungart, Milton: COE 3,4.

Busch, Patricia: Pep Club 1; FHA 4.

Byrd, Deborah: Glee Club 1-3; Band 1,2; Spring Show 1-3; Music Contest 1-3; Messiah 2; Vocal Clinic 1-3; Christmas Program 1-3; Pep Club 1-3; COE 3,4; Office Worker 3,4.

Byrd, Paul: Basketball 3,4; Football 2; FFA 1.

Clark, Leon

Clark, Susan: Glee Club 1,2; Band 1,2; Spring Show 1,2; Music Contest 1,2; Messiah 2; Speech Contest 3; Referee 3; MGC 4; Pep Club 1-4; President 4; Honor Society 2-4; Girls Basketball 2-4; Girls Track 2-4; Student Council 1-4; GAA 1-4; Cheerleader "B" 1, "A" 2,3; Office Worker 4;

Homecoming Candidate 4; Queen of Popularity & Beauty 4; Homeroom President 1-4; AFS 4.

Coon, Myron: Referee Staff 4; Basketball 1-4; Football 1-4; Football Captain 4; All Conference LB 4; Track 1-4, Capt. 3; E Club 3,4; Student Council 4; FFA 1-4, Secretary 4; AFS 3,4; Senior Class President; Watscha Community High School 1,2.

Cotton, Olive: FHA 1-4.

Currence, Richard: Industrial Arts 4; FFA 1-4.

Davis, Daniel: Glee Club 1-4; Chorus 1-4; Band 1-4; Spring Show 1-4; Music Contest 1-4; Messiah 2; Vocal Clinic 4; Christmas Program 1-4; Speech Contest 3; Honor Society 4; Industrial Arts 2; Student Council 4, President; Science Club 1,3; FDLA 4; Fall Festival 1.

DeGraffonreid, Brenda

Dowler, Michael: Glee Club 1-4; Chorus 1-4; Band 1-4; Spring Show 1-4; Music Contest 1-4; Vocal Clinic 1-4; Messiah 2; Christmas Program 1-4; Speech Contest 4; Basketball 1; Student Council 4; Science Club 1; Boys State 3; AFS 4; Stage Band 1-4; Hearthrob Ball 1-4; Fall Festival 1.

Duncan, Kathy: FHA 1-4.

Dusenberry, Dorothy: Thespian 3; One-Act Play 3; Three-Act Play 3; Office Worker 3; Library Worker 2.

Edwards, Douglas: Industrial Arts 3.

Fairchild, Sheila: Glee Club 1; Music Contest 1; Referee Staff 4; MGC 4; Pep Club 2-4; COE 3,4; Student Council 1; GAA 2-4; FHA 4; Office Worker 2,4; Library Worker 2; Marshall High School 1,2.

Farris, Cheryl: Glee Club 1,2; Spring Show 1,2; Messiah 2; Vocal Clinic 1,2; Christmas Program 1,2; Pep Club 1-3; COE 3,4; Student Council 1.

Fisher, Sheryl: Glee Club 1-4; Band 1-4; Chorus 4; Music Contest 1-4; Messiah 2; Vocal Clinic 1-4; Christmas Program 1-4; Pep Club 1-3; COE 3,4.

Fitzpatrick, Rodney: Golf 2; COE 4; Industrial Arts 1-3.

Flaughner, Bill: Track 1.

Fletcher, Janice: MGC 3; FHA 3,4; Reporter 4; Office Worker 4.

Florz, Byron: Track 1; Industrial Arts 3.

Foley, David: Basketball 1; Track 1; COE 4.

Ganshor, Lynn: Christmas Program 4; Spanish Club 2; Library Worker 3,4.

Golden, Linda: Glee Club 2; Spring Show 2; Music Contest 2; Messiah 2; Vocal Clinic 2; Christmas Program 2; Pep Club 1,2; COE 4; FHA 2,3,4; Fall Festival 1.

Golden, Robert: Basketball 1,2; COE 3,4.

Graham, David: Track 3; COE 4; Industrial Arts 3; FFA 1-4; Art Club 3,4.

Graham, Tom: Basketball 1; COE 4; Industrial Arts 2-4; Science Club 1; Office Worker 3; Library Worker 3,4.

Green, James: Basketball 1; COE 3,4; Industrial Arts 2; FFA 1-4.

Hatch, Gary: Student Council 2; Homeroom President; FFA 1-4.

Helton, Brent: Glee Club 1-4; Chorus 1-4; Band 1-4; Spring Show 1-4; Music Contest 1-4; Messiah 2; Vocal Clinic 4; Band Clinic 3,4; Stage Band 2-4; Heartthrob Ball King Candidate 4; Christmas Program 1-4; Speech Contest 3; Referet Staff 3,4; Basketball 1; Science Club 1; Thespians 4; One-Act Play 4; Three-Act Play 4; Fall Festival 1; FBLA 4.

Hendrix, Tom: Basketball Manager 1; COE 4; Industrial Arts 4.

Henley, James: Band 1; Music Contest 1; Football 3; Industrial Arts 1-4; Thespians 3,4; One-Act Play 3,4; Three-Act Play 3,4; Fall Festival 1; Homeroom Officer 4; Escort Queen of Popularity and Beauty 3.

Hermann, Gary: Washington High School 1-3.

Hlavacek, Jane: Speech Contest 4; Pep Club 2-4; Honor Society 3,4; Girls Basketball 3,4; Track 3,4; Spanish Club 2; GAA 3,4; Science Club 3; Cheerleader 4.

Hollenbeck, Roger: COE 4.

Houghton, Linda: Messiah 2; Pep Club 2-4; Honor Society 3,4; Girls Basketball 4; Track 4; Spanish Club 2; Student Council 4; GAA 4; Science Club 2-4; Lab Assistant 4.

Hutton, Jimmy: Basketball 1-4; Track 1; E Club 3,4; COE 4; Industrial Arts 1,2; FFA 1.

Inler, Diana: Pep Club 1-3; COE 4; Student Council 1; Homeroom President; GAA 1,2; Library Worker 3,4; Art Club 2.

Jamet, Donna: Chorus 1,2; Band 1; Spring Show 1,2; Ewing High School 1,2.

Jenkins, Randy: Basketball 1-4; Football 1-4; Track 1; E Club 1-4; COE 4; Industrial Arts 1-2; Student Council 3; Science Club 3.

Jett, Susan: Glee Club 1-4; Spring Show 1-4; Music Contest 1-4; Messiah 2; Vocal Clinic 1-4; Christmas Program 1-4; Speech Contest 3; Pep Club 1-4; Girl's Basketball 3,4; Track 2-4; GAA 1-4; Thespians 3; One-Act play 3; Three-Act Play 3,4; Cheerleader 4.

Kempker, David

Koeck, Franz: Glee Club 4; Chorus 4; Spring Show 4; Music Contest 4; Vocal Clinic 4; Christmas Program 4; MEC 4; Football 4; Track 4; E Club 4; Student Council 4.

Koerner, Beverly: Glee Club 1,2; Music Contest 1,2; Pep Club 1-4; Honor Society 4.

Lawrence, Kenny: Glee Club 1-4; Chorus 1-4; Band 1-4; Spring Show 1-4; Music Contest 1-4; Messiah 2; Vocal Clinic 1-4; Christmas Program 1-4; Referet Staff 3; Science Club 1; Thespians 3,4; One-Act Play 1-4; AFS 4; King of Hearts 4; Stage Band 1-4; Class Officer 4; Three-Act Play 3,4; Fall Festival 1.

Leffert, Pamela: One-Act Play 2; Library Worker 1,2,4.

Lewis, Brenda: Glee Club 1-4; Chorus 3,4; Spring Show 1-4; Music Contest 1-4; Messiah 2; Vocal Clinic 4; Christmas Program 1-4; Pep Club 1,2; Office Worker 4.

McBroom, Mary Jane: Glee Club 1-4; Chorus 4; Band 1-3; Spring Show 1-4; Music Contest 1-4; Messiah 2; Vocal Clinic 4; Christmas Program 1-4; Speech Contest 4; Pep Club 1-4; Cheerleader, "B" 2,3, "A" 4; Library Worker 2,3.

McKinley, Charley: Speech Contest 4; Honor Society 3,4; Student Council 2,3; Science Club 3,4; Math Club 2,4.

McLaughlin, Linda: FFA 1-4; FBLA 4.

Manning, Linda: Glee Club 1-3; Spring Show 1-3; Music Contest 1-3; Messiah 2; Christmas Program 1-4; Referet Staff 4; MEC 4; Pep Club 1,2; COE 3,4; Spanish Club 2; Thespians 4; Office Worker 2; FBLA 3.

Melton, Mary Catherine: Glee Club 1-4; Chorus 3,4; Band 1-4; Spring Show 1-4; Music Contest 1-4; Messiah 2; Vocal Clinic 4; Christmas Program 1-4; Speech Contest 4; Pep Club 1,2; GAA 1; Thespians 3,4; One-Act Play 3,4; Three-Act Play 4; Band Clinic 3,4; AFS 4; Stage Band 2-4; Heartthrob Ball Queen Candidate 4.

Mitchell, Larry: Glee Club 1-3; Chorus 1-3; Spring Show 1-3; Messiah 2; Vocal Clinic 1-3; Christmas Program 1-3; COE 4; Industrial Arts 1; Student Council 1; Science Club 1,3; Fall Festival 1.

Moats, Barbara: Glee Club 1-4; Chorus 3,4; Spring Show 1-4; Music Contest 1-4; Messiah 2; Vocal Clinic 4; Christmas Program 1-4; Referet Staff 4; MEC 4; Pep Club 1-3; GAA 1-4; FFA 1-4; Fall Festival 1; Cheerleader 2,3; Office Worker 4; Art Club 3; Heartthrob Ball Queen 4; Glee Club Pres. 4; Class Officer 1,2,4; Homeroom Officer 1-2; Class Maid for Queen of Popularity and Beauty 2.

Mosher, Carl: Glee Club 4; Spring Show 4; Music Contest 4; Vocal Clinic 4; Christmas Program 4; Science Club 3; FBLA 4.

Mueller, Gary: Chorus 1-3; Basketball 1; Football 1; Track 1; Music Man 3; Jeff, City Sr. High 1-3.

Opie, Danny: Band 1-2; Basketball 1; Football 1-3; Industrial Arts 1-4.

Payne, Ronda: Glee Club 3; Speech Contest 3; MEC 4; Pep Club 4; COE 4; Science Club 2-3; Thespians 4; Office Worker 2; Library Worker 2; Chorus 1; Latin Club 1; Volleyball Tournament 1; FFA 1; Vocal Clinic 1; Music Contest 1; Tennyson High 1.

Pearson, Mark: Football 1,4; FFA 1-4.

Porter, Janet: Pep Club 4; Student Council 4; Cheerleader 4; Office Worker 4.

Procter, Frank: COE 4; FFA 1-3.

Quick, Keith: Industrial Arts 3.

Rand, Fred: Football 1,2; Track 1,2; COE 3,4; FFA 1-4.

Reed, Robert, W.: Glee Club 1-4; Band 1-3; Chorus 1-4; Spring Show 1-4; Messiah 2; Vocal Clinic 4; Christmas Program 1-4; Speech Contest 4; Honor Society 4; Basketball 1-2; Spanish Club 1-2; Stu-

dent Council 1-2; Science Club 1-4; Thespians 4; One-Act Play 1,2,4; Three-Act Play 4; Fall Festival 1; Math Club 2,4; Band Clinic 2,3.

Regalado, Andy: Basketball 1; Football 4; Track 1,2,4; E Club 4; Industrial Arts 1-3; Science Club 2,4.

Reutro, Gary: Band 1-3; Music Contest 1-3; COE 4; Science Club 1.

Richardson, Brenda: FBLA 4.

Rourke, Richard: Track 1,2; COE 3,4; Industrial Arts 4.

Robb, David: Glee Club 1-4; Chorus 2-4; Band 1-4; Spring Show 1-4; Music Contest 1-4; Messiah 2; Vocal Clinic 4; Band Clinic 2,4; Stage Band 2-4; Christmas Program 1-4; Speech Contest 4; Heart-throb Ball 2-4; Honor Society 2-4; Track 3; Football Manager 4; Industrial Arts 2,4; Student Council 2-4; Science Club 1,3,4; Fall Festival 1.

Sale, Richard: MEG 4.

Sanders, Cleatus: Basketball 1; COE 3,4.

Schmitt, Judy: COE 4; FHA 4; Library Worker 1-3.

Schupp, Mike: Glee Club 2; Band 1-3; Spring Show 1,2; Music Contest 1-3; Christmas Program 1; Speech Contest 3; Industrial Arts 1; Science Club 1,2; One-Act Play 2; Fall Festival 1; Art Club 3.

Scrivner, Carolin: FHA 4.

Sears, Larry: Basketball 1; Industrial Arts 4; Art Club 3.

Shoemaker, Robert: Glee Club 2,3; Chorus 3; Band 1,2; Spring Show 2,3; Music Contest 1-3; Messiah 2; Vocal Clinic 3; Christmas Program 3; Speech Contest 3; Football 3,4; Golf 1-4; E Club 3,4; Industrial Arts 1-4.

Simpson, Darlene: Glee Club 1-3; Band 1,2; Spring Show 1-3; Music Contest 1-3; Messiah 2; Vocal Clinic 1-3; Christmas Program 1-3; Pep Club 1-2; Fall Festival 1; Office Worker 3,4; FBLA 3,4; Treasurer 4.

Smith, Deborah: Honor Society 4.

Snodgrass, Rita: Glee Club 1,2; Spring Show 1,2; Music Contest 1,2; Messiah 2; Christmas Program 1,2; Pep Club 1,2; Fall Festival 1; Office Worker 4.

Spencer, Steve: Glee Club 1; Speech Contest 4; Referet Staff 4; MEG 4; Track 2; Industrial Arts 4; Spanish Club 2; Library Worker 3.

Stogdill, Thomas: COE 4; Industrial Arts 3.

Stone, Kathy: FHA 1,4.

Sullins, Barbara: GAA 3,4, Vice President; FHA 1,2.

Sweeney, Linda: Glee Club 1; Speech Contest 4; MEG 3; Pep Club 1-3; COE 4; Student Council 4; Secretary; GAA 1,2.

Tetley, Priscilla: Glee Club 1; Pep Club 1-3; Library Worker 4.

Thorson, Majorie: Girls Basketball 3,4; COE 4; FHA 1-4; Library Worker 3.

Toppliff, Barbara: Christmas Program 4; Referet Staff 4; MEG 4; Pep Club 1-3; Honor Society 3,4; Treas. 3; COE 3,4; Spanish Club 2; Student Council 4; Treasurer; GAA 3,4; Sec.-Treasurer 4; Fall Festival Freshman Maid 1; Officer Worker 4.

Vaughn, Diane: Glee Club 1-4; Chorus 2-4; Band 1,2; Spring Show 1-4; Music Contest 1-4; Messiah 2; Christmas Program 1-4; Honor Society 3,4; COE 3; COE Contest 3; FBLA Contest 4; FBLA 3,4; Secretary FBLA 3,4.

Vernon, Lloyd: Basketball 1,2; Football 3,4; Track 3; COE 3,4; FFA 1,2.

Weaver, David: Band 1; Football 1,2,4; E Club 4; COE 3,4; Industrial Arts 1,2; Student Council 2.

Whitney, Virginia: Band 1,2; Music Contest 1,2; Christmas Program 4; Speech Contest 4; Spanish Club 2; Student Council 4; Science Club 2; AFS 3,4.

Whittle, Margie: Referet Staff 4; MEG 4; Pep Club 4; FHA 4; Science Club 3; FBLA 4.

Widmer, Debbie: Pep Club 4; Girls Basketball 3,4; GAA 1-4; Cheerleader 4; AFS 3,4.

Wieneman, John: Glee Club 1-4; Chorus 2-4; Band 1-4; Spring Show 1-4; Music Contest 1-4; Messiah 2; Vocal Clinic 1-4; Christmas Program 1-4; Library Worker 2,4; Library Club Pres. 4.

Williams, David: COE 4.

Williams, Kathy: Christmas Program 4; Girls Basketball 4; GAA 4; Homecoming Candidate 4; Beta Club 3; Pep Club 2,3; Volleyball Team 1-3; FTA 2,3; French Club 3; Union High School 1-3.

Williams, Sonja: Del Oro High School 1; Girls Glee 1; GAA 1.

Wilson, Patricia: Glee Club 1,2; Spring Show 1,2; Music Contest 1,2; Messiah 2; Vocal Clinic 1,2; Pep Club 1,2; COE 4.

Winkler, Phyllis: Band 1; Music Contest 1; FHA 1; Office Worker 4.

Witt, George

Wood, Larry: Industrial Arts 2,3.

Worthy, Carol: Christmas Program 4; Speech Contest 4; Honor Society 4; Girls Basketball 3,4; Track 4; GAA 4; Science Club 3,4; Art Club 3.

Wright, Mark: Football 1,3,4; Track 1,2; Industrial Arts 1-4; Library Worker 3.

Workman, Jerry

Wyrtek, Melinda

Zimmer, Rebecca: Pep Club 1,2; COE 3,4; Spanish Club 1.

Valedictorian



Susan Clark

Salutatorian



June Hlavacek

History of the

CLASS

OF

1969

(As given in the senior assembly, Monday, May 19, 1969 in the new gymnasium.)

Fifty of our first grade students graduated with us this year, 1969.

Our first grade teachers were: Mrs. Lind, Mrs. Collier, and Mrs. Davidson. Remember how many parents had to come to school to take students home? We were crying.

Our second grade teachers were: Mrs. Denny, Mrs. Jones, and Mrs. Busick. We gained several new students this year. Recall how we got into trouble for eating crayons?

Our school years three thru six were busy ones. The school had burned down, and Mrs. Conlon's class was meeting in the Masonic Temple, while Mrs. Croose's class was meeting in the new high school building.

We became seventh graders and all went to the junior high building. Our eighth grade year was highlighted with the annual banquet in our honor. Some of our teachers during these years: Mrs. Mobley, Mrs. Kidwell, Mr. McCreery, Mr. Barker, Mrs. Graham.

Upon entering High School, we greeted our "elders" with tails and ears. Initiation day was one we will never forget. The real initiation, of course, took place after school. This was the year of our great float, "Scorch-Em."

Our Sophomore year was a lot of fun. It was the year of Mr. Vallino and the great snipe hunt. This year many of us turned 16 and got our driver's licenses. "What a wild year on the Eldon streets, uh?"

One of the best years of the '69 class was our Junior year. We produced the best prom ever, entitled "Paris by Night". This was the year for fire dances, egg throws, and pool playing.

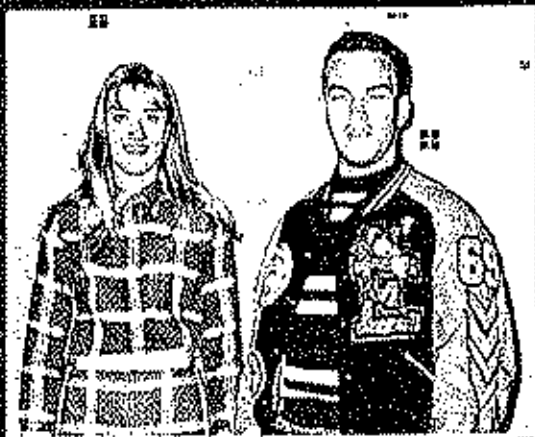
We helped to make our final year at E.H.S. one of the best in its history. All of our academic departments were good this year. We had great football, basketball, and track teams. Our music department won top honors. We have made our school days something to remember and treasure always. They are full of dear and personal memories of each of us. It all culminates this year. 1969 was a very good year.

SENIOR CLASS



Top left: Best Dressed, Rita Snodgrass, Robert Reed.
Top right: 3 Smartest Boys, Charles McKinley, Howard Thacker, David Robb.
Center left: Prettiest Hair--Debbie Widmer, Gary Hermann.
Center Right: Prettiest Eyes--Danny Opie, Linda Manning.
Bottom left: Wittiest--Richard Sale, Mary Jane McBroom.
Bottom Right: Friendliest, Franz Koeck, Barb Moats.

WHO'S WHO



Top left: Most Poised and Best Athlete
--Debbie Widmer, But Coon.
Top right: Most Likely to Marry--
Rodney Fitzpatrick and Debbie Byrd.
Center left: Three Smartest Girls--
Susan Clark, Brenda Ahart, June
Hlavacek.
Center right: Most Likely to Succeed
--Howard Thacker, Susan Clark,
Bottom Center: Best Dancers--Kenny
Lawrence, Barb Mounts.
Bottom right: Prettiest Girl and Most
Handsome Boy--Janet Porter and Gary
Hermann.

(Not pictured.)
Most popular, Susan Clark, Kenny
Lawrence.



June Hlavacek



Charles McKinley



Howard Thacker



Phyllis Winkler



Debbie Smith

1969
SENIOR
CLASS



Susan Clark



Linda Houghton



David Robb



Brenda Ahart



Barbara Topliff

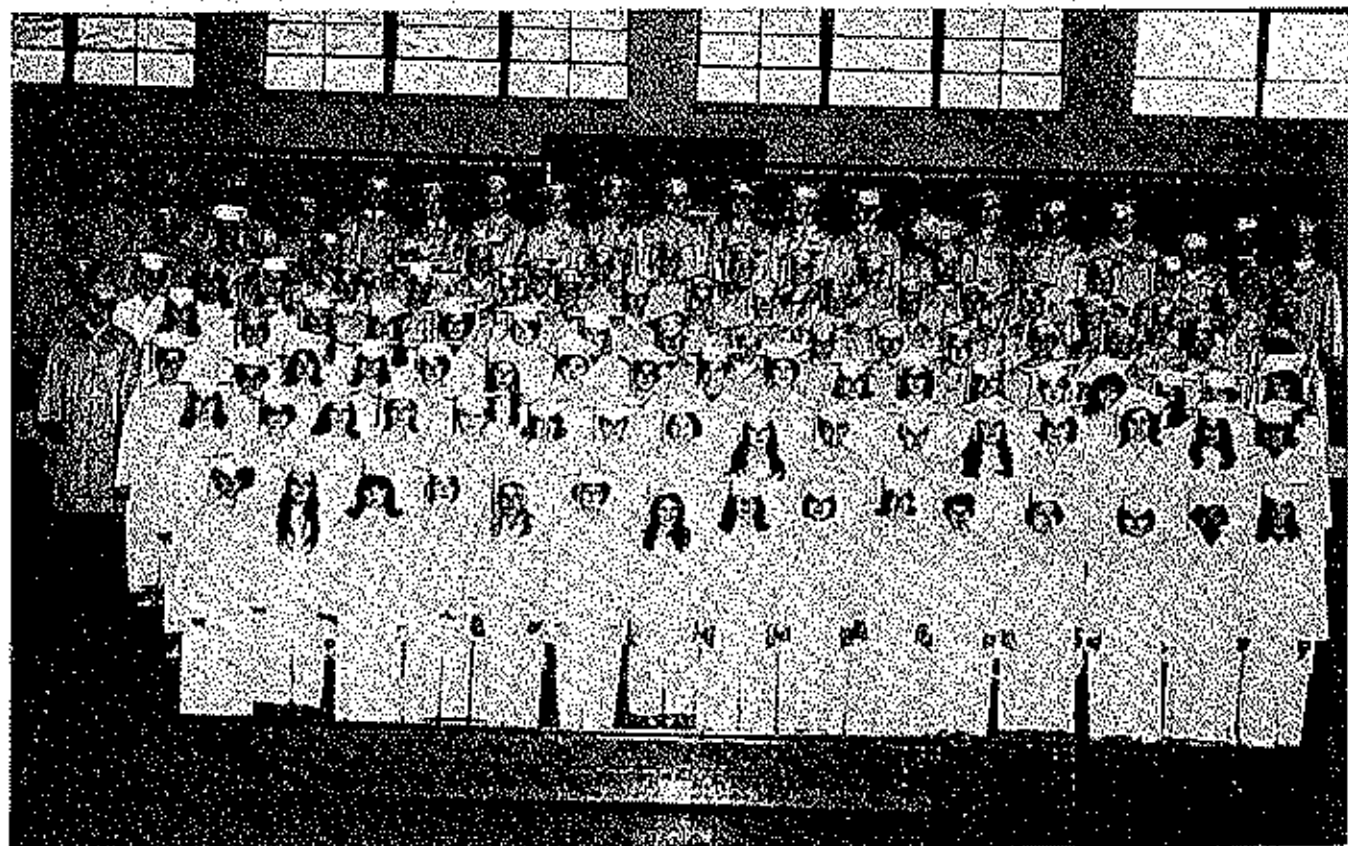
**TOP
TEN**

1969 SENIOR CLASS



LEFT: Senior boys are getting ready for the big moment—the receiving of their diplomas.

BELOW: The 1969 Senior Class of Eldon in their caps and gowns. Girls had white. Boys had gold.



JUNIORS



Junior Class Officers, Left to Right: Milan Johnson, Kay Neumann, Dennis Jett, and Jackie Moats

Alpers, Mary Jane
Amos, Delbert
Amsinger, Deborah
Arnold, Roger
Ault, Gayla



Bacon, Myrna
Bashore, Glen
Bedwell, Nancy
Berkstresser,
Marilyn
Biselx, Lisa



Blankenship, Sherry
Bodine, Frank
Bonnot, Kathleen
Booth, Stanley
Boulware, Gary



Bova, Bruce
Breen, John
Brumley, Pamela
Buchanan, Sharon
Bungart, Danny



Burney, Carin
Carpenter, Randall
Carter, Greg
Clark, Peggie
Claxton, Randy



Connell, Charles
Connell, Curt
Connell, Leonard
Cornett, Cynthia
Cox, Marvin

Crum, Yvonne
 Currence, Joseph
 Davis, Jack
 Donahue, Phyllis
 Duncan, Darrell



Eads, Reggie
 Eastburn, Connie
 Elsenman, Beverly
 Faulconer, Alan
 Fesse, Michael



Gardner, Susan
 Gier, Tony
 Green, Sharon
 Hachler, Cheryl
 Harrison, Ross



Harvey, Harry
 Hess, Curtis
 Hicks, Dianna
 Hicks, Kenneth
 Howser, Mary



Howser, Victor
 Jenkins, Connie
 Jett, Dennis
 Johnson, Milan
 Johnston, Harold



Jones, Gail
 Kerkick, Phillip
 Kidwell, Dennis
 Knoch, Peggy
 Koveli, Sherry



Kunzier, Carolyn
Lake, Robert
Laytham, Joyce
Lee, Naomi
Liffert, Steven



Lewis, Cathy
Love, Kathleen
McCubbin, Carol
McKinley, Douglas
McKinney, Darlene



Marshews,
Henryetta
Miller, James
Moats, Jackie
Mossman, Steven
Neumann, Kay



Pointer, Danny
Popejoy, Sidney
Popp, Patricia
Porter, Dwayne
Porter, Mitch



Furl, Herman
Rains, Arta
Rains, Larry
Rand, Daniel
Ren, Jeffery



Reed, Robert L.
Richardson, Dennis
Richardson, Donald
Riffle, J. B.
Roark, Kathlyn





Roark, Maureen
Robinett, Debbie
Robinett, Joyce
Runyan, Damon
Schulte, Bert



Scrivner, Bonnie
Scrivner, Connie
Sears, Judy
Settles, Albert
Shaw, Linda



Shepherd, Patricia
Simpson, Marcella
Smith, Rebekah
Spencer, Betty
Tannehill, Bobby



Thomas, Richard
Thompson,
Barbara
Thornton, Wilma
Tompkins, Greg
Torrence, Nancy



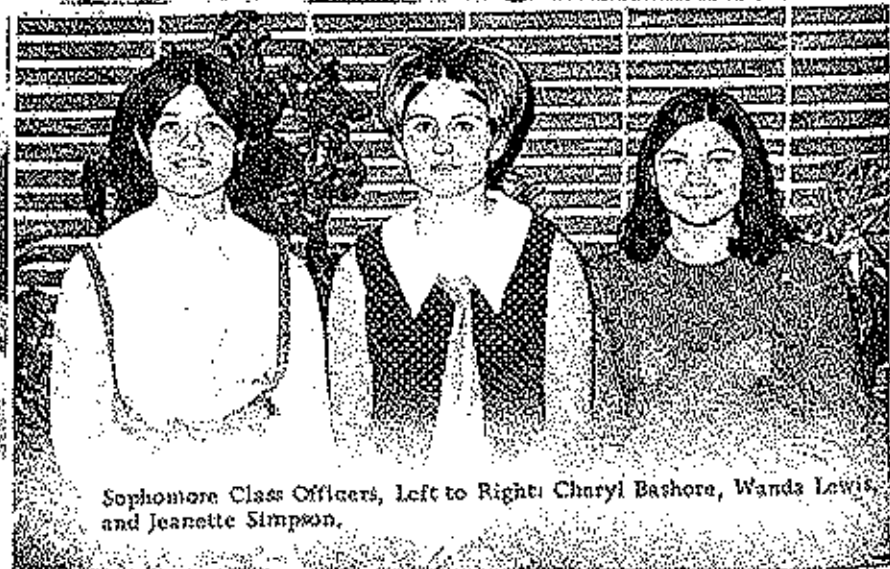
Vernon, Ricky
Waite, Martha
White, Betty
Whittle, Starr
Wilkerson, Randy



Williams, Karyl
Williams, Gaye
Williams, Roger
Wilson, Gordon
Wood, Linda



SOPHOMORES



Sophomore Class Officers, Left to Right: Charyl Bashora, Wanda Lewis and Jeanette Simpson.

Bonny Abbett
 Mike Ahart
 Denise Amsinger
 Donna Apperson
 Cheryl Bashore



Sandra Bass
 Robert Bedwell
 Becky Birdsong
 Clinton Bishop
 Kathy Blum



John Bock
 Susan Bock



Sammy Bohm
 Donald Booth



Teresa Bradshaw
 Donnie Branstetter
 Patty Branstetter
 Boyd Burris
 Judy Burris



Randy Bush
 John Caine
 Kathy Campbell
 Paul Carpenter
 Bruce Cato





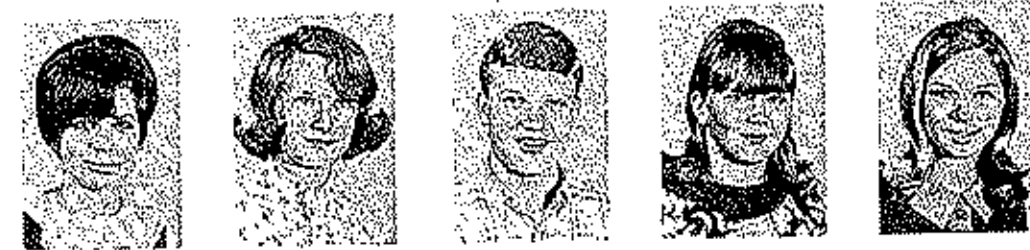
Sue Clotworthy
Darroll Conner
Mike Coon
RoseMary Cooper
Debbie Cornett



Jim Cox
Nancy Cox
Kathy Currence
Marsha Dickerson
Bud Dinwiddie



Gail Dinwiddie
James Doolin
Cindy Dunstan
Carolyn
Dusenberry
Joyce Edelman



Sarah Elsom
Pat Engle
Dennis Erickson
Nicky Evans
Marilyn Franklin

Bob Frederickson
Larry Graham
Floyd Halderman
Jim Hart
Donn Henley



Mark Hodges
RoseMary Houser
Dale Houston
Elizabeth Howell
George Howser



EHS is spirited before classes each morning.



Willa Husky
Mike Irwin

Paula Jarrett
Glenda Jeffries



David Jenkins
Janet Johnson
Rick Jones
Kay Kelsay
Gary Kidwell

Billy Koerner
Dobbie Landon
Wanda Lewis
Matt Meyer
David Morris



Dennis Nations
Paula Rouch
Vicki Ronton
Sammy Sanning
Kay Schmidt



Urban Schmitt
Jerry Schupp
Erma Scott
Mike Scott
Nita Shoemaker



Jeanette Simpson
Vicky Stone
Jane Spalding
Mike Spears
Lisa Stickey

Mike Stickey
Daniel Thacker
Donald Tracy
Nancy Turpin
Pam Van Hooser



Greg Vernon
Judy Wall
David Ward
Francis Washia
Betty Watkins



Ricky West
Sharon White
Marlyn Whitney
Steve Williams
Jim Winkler



Danny Wood
Julie Wood
Dennis Wright
Larry Wrye

NOT SHOWN:
Jimmy Jefferies
Dwane Farley
Nancy Scrivner
Bob Roe
Sharon Witt
Donald Denman
David Perkin

FRESHMEN



Freshman Class Officers, Left to Right: Barbara Rains, Terry Fischer, and Steve Farris.



Jim Abbott
Debbie Aldrich
Pam Arnold
Mark Atwell
John Ayres
Dwayne, Basham

Sharon Bashore
Marsha Baucom
Lynn Beanland
Donnie Bedwell
Tex Bishop
Kitty Bradshaw

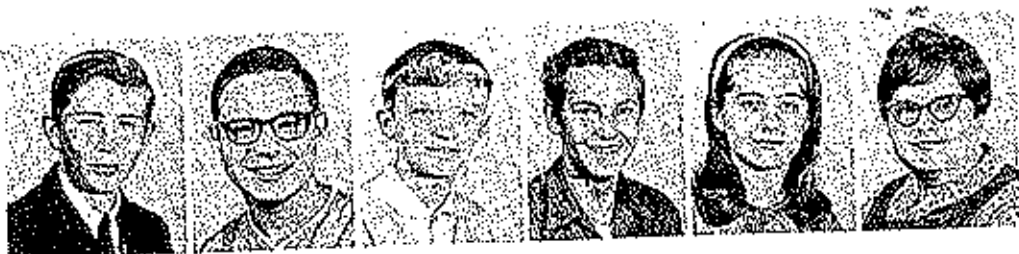


Jane Breen
Janice Burlingame
Loretta Burney
David Byrd
Steve Callison
Jeannette Carey

Ken Chapman
Kenneth Clubb
Kathy Cooper
Jana Crum
Craig Curtiss
Tim Davis



Kim Dowell
David Dowler
Tommy Dummermitt
Richard Dusenberry
Kathy Dutcher
Janet Dye



Pam Eastburn
Darryl Edwards
Sheryl Edwards
Ruth Eidson
Bob Enowski
Steve Farris



Buddy Faulconer
Mike Faulconer
Terry Fisher
Debby Fletcher
Debbie Franklin
John Gambill



Mike George
Billy Golden
Clifford Green
Daniel Green
Donnie Green
Ruth Greenway

Herman Harrison
Feggy Harrison
Henry Hart
Gloria Helmer
Rhonda Hickey
David Hill



Sharon Hill
Mary Hlavacek
Rhonda Hoffner
Genie Horsman
Keith Houghton
Ronnie Houston

Rose Howser
Sandy James
Kathy Jeffries
D'Ann Jenkins
Avis Johns
Sandy Johnson



Mary Jones
Nina Kelly
Sharon Kempker
Janice Kidwell
Suzanne Kirk
Dennis Kirkpatrick



Shelley Kales
Donna Koerner
Marilyn Kuster
Kenny Lambeth
Beth Lesh
Mark Luetkemeyer

Marena Marriott
Sam Merritt
Mike Meyers
Juanita Moore
Diana Mulcahy
Danny Naughton



Peggy Opie
Randy Opie
Nancy Pearson
Judy Peterson
Jerry Porter
Pat Quigley

Barbara Rains
Johnny Regalado
Sharon Robbinett
Ray Rogers
Dennis Ruten
Danny Sale



Lloyd Schmitt
Dorothy Schulte
James Schupp
Mary Schwintek
Linda Shackelford
Gary Shepherd

Duane Shelling
Christy Stark
Glenda Stone
Sharon Thornton
Randy Tompkins
Susan Topliff



Patty White
Keith Whitworth
Loretta Wilson
Marilyn Wilson
Ricky Wilson
Elaine Wineinger



Gloria Winters
Dena Wiskur
Rita Witt
Jean Wood
Richard Wry
Sandy Wyrick

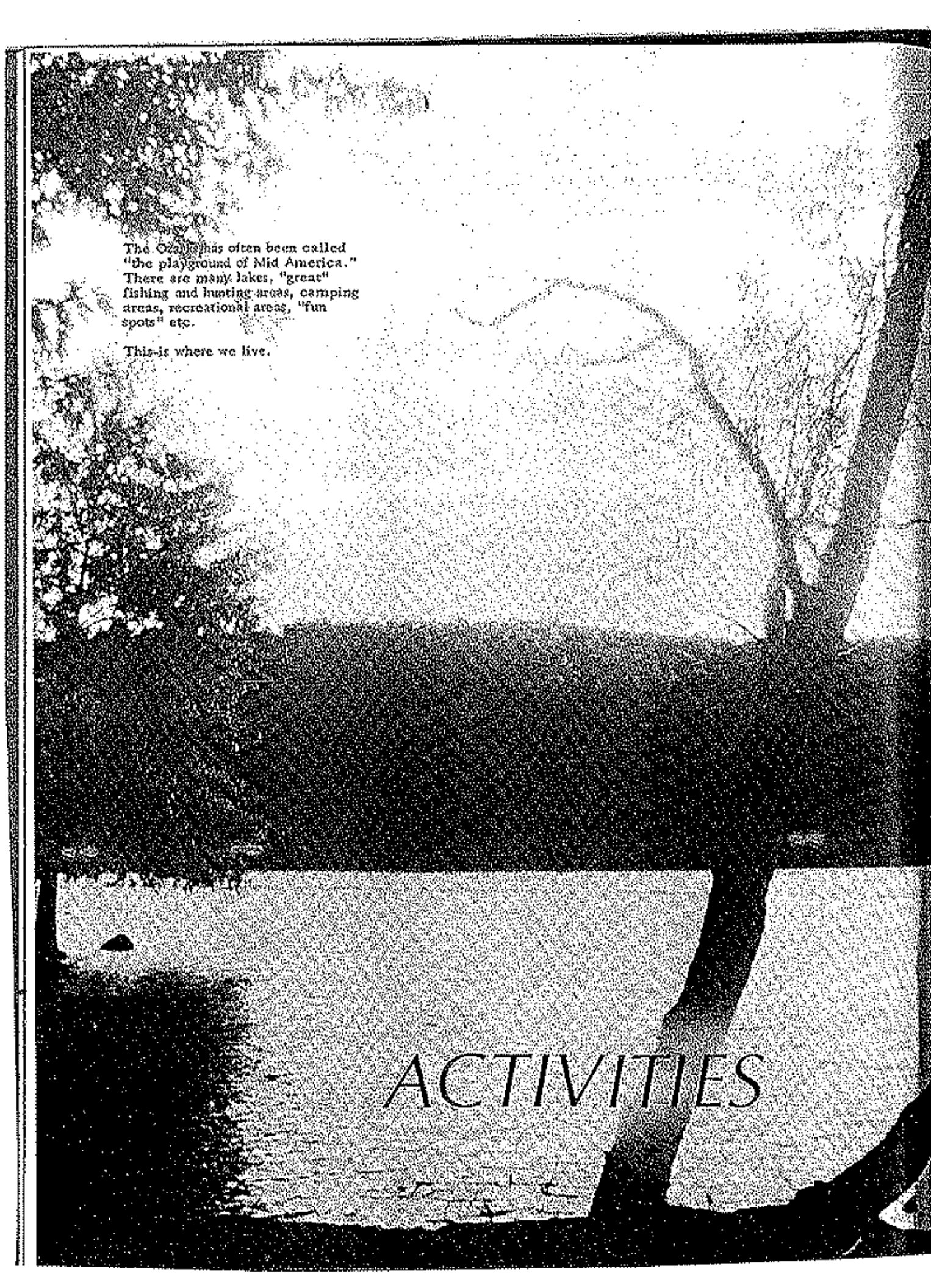
Suzie Yows
Debbie Zimmer
Rhonda Woods
Dennis Schauck
Terri Madole
(No picture)
Kenneth Hees
(No picture)



"Freshmen Study Lots"

Seniors know?





The Ozarks has often been called
"the playground of Mid America."
There are many lakes, "great"
fishing and hunting areas, camping
areas, recreational areas, "fun
spots" etc.

This is where we live.

ACTIVITIES

HOMECOMING QUEEN AND HER COURT

Homecoming Day was highlighted with several outstanding activities. School let out early in the afternoon to allow students to prepare their floats for the parade. After the parade the floats were disassembled and after a few hours lull the students returned for the pre-game bonfire. At half-time Eldon was behind the California Pintos 6-7. The Eldon Marching Band delivered a medley of Patriotic Songs. Our homecoming queen was then crowned. She is Janet Porter, senior candidate. She is the daughter of Mr. and Mrs. K. D. Porter of High Point. The other candidates were Susan Clark, Becky Zimmer, Kathy Williams, and Debbie Baucom.



Janet Porter: 1968 Homecoming Queen

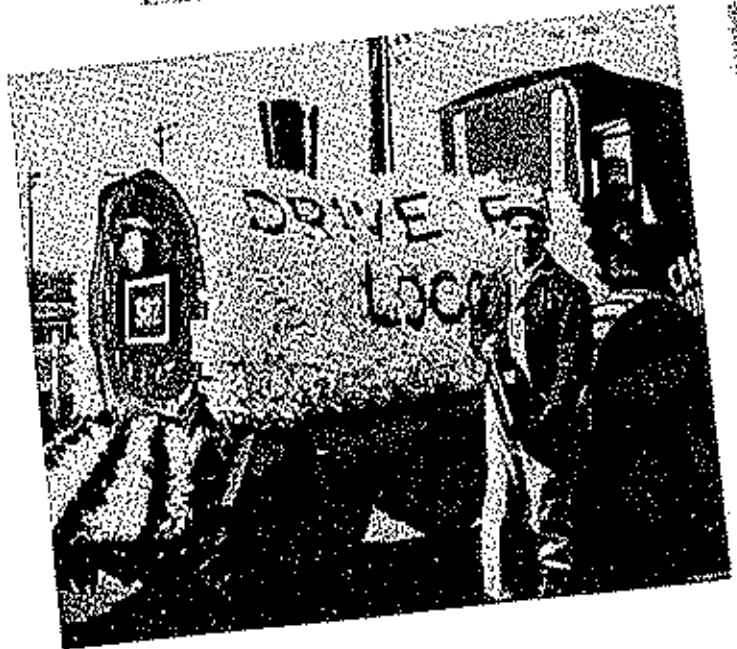
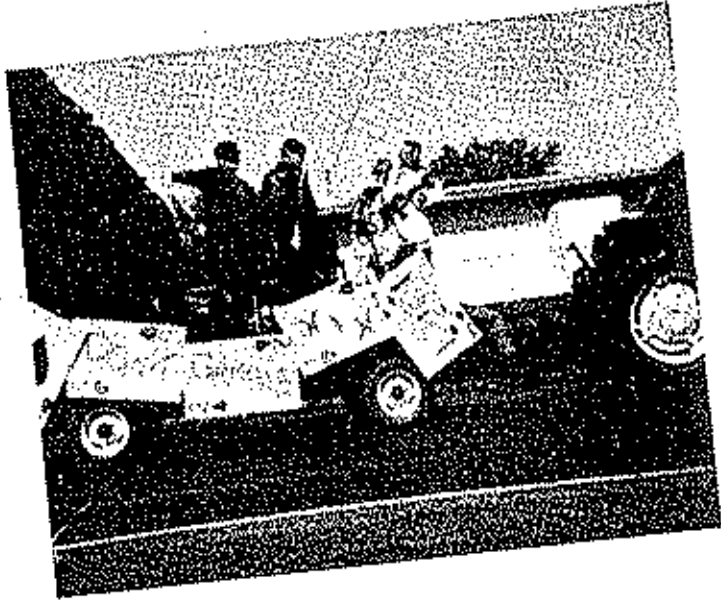


LEFT TO RIGHT. Kathy Williams, Susan Clark, Queen Janet Porter, Becky Zimmer, and Debbie Baucom.

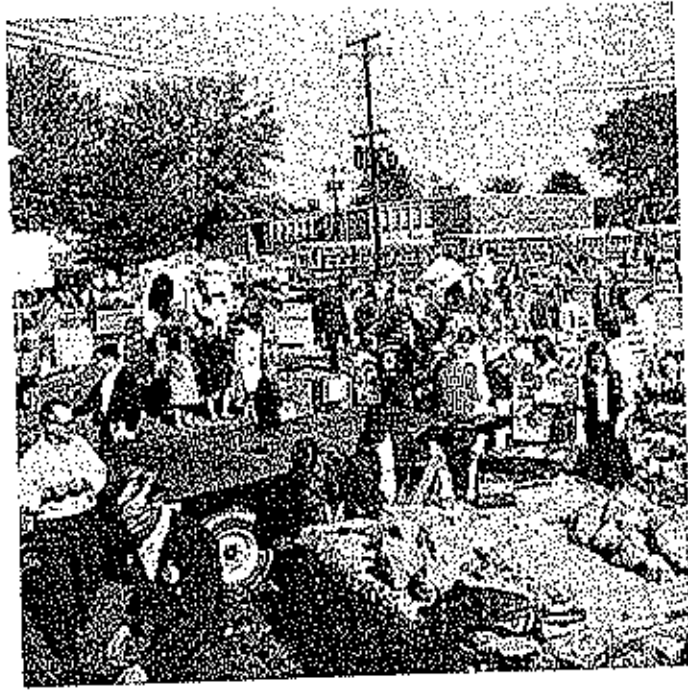
HOMECOMING

1968

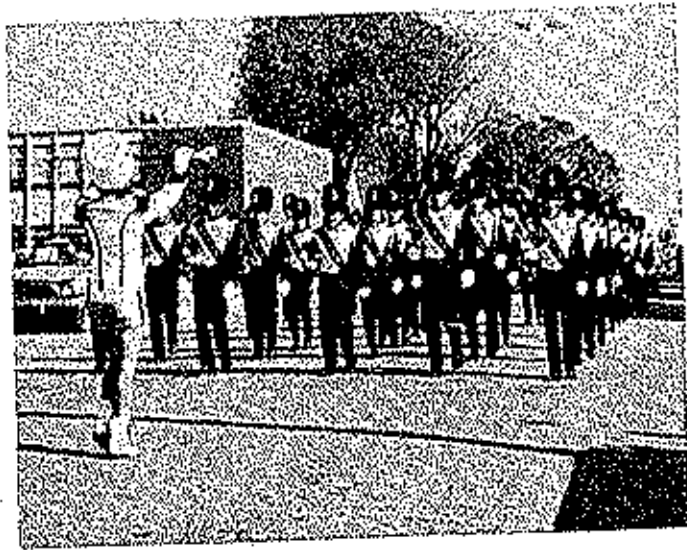
Traditionally EHS has a colorful, spirited, enthusiastic Homecoming. This year it was bigger and better than ever.



Above: EHS Cheerleaders add spirit to Homecoming parade. Right, Above: Junior float wins first place in float competition; Center: Junior float, "Don't gamble, win!"; Bottom: Industrial Arts Float, "Choo-Choo."



Above: Students disassembling floats after Homecoming parade.
Left: Students gather around the traditional Homecoming bonfire.



Above and Left: EHS Band participates in Homecoming activities.



EHS 3 Act Play FATHER OF THE BRIDE

The three act play "Father of the Bride" was performed this year under the able direction of Mr. James Ward, teacher of English and Speech. Mrs. Linda Tye served as his assistant.

The play was a great success. Students, faculty, and parents praised it highly.



Above: Lisa Biselx and Ken Buehler --the "leads."
Right: The proposed marriage is announced to Father and family.



Above: Applying makeup before curtain time.
Upper Right: Stage crew gives able assistance to the production.
Right: At dress rehearsal, Jim Ward, director talks with the cast.

CHRISTMAS ASSEMBLY



Girls' quartet sings "Bring a torch, Jeanette Isabella."



Boys' quartet sings "O Holy Night."



Vocal music department sings several Christmas songs.

H
E
A
R
T
B
R
A
T
L
L
H
L
R
O
B



King, Kenny Lawrence Queen, Barbara Moats

1969 saw the last Heartthrob Ball of Eldon High School. The ball was quite successful with the Box Lunch from Columbia providing the music. Barbara Moats was crowned 1969 Queen and Kenny Lawrence was King. The Royal court consisted of Brent Helton, Mary Melton, Ann Mastey and Dan Davis.

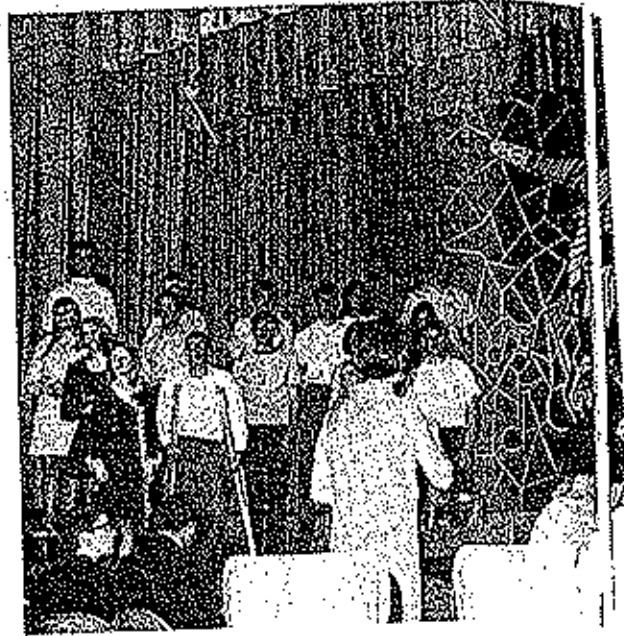


BACK ROW, Left to Right: Brent Helton, Mary Melton, Ann Mastey, Dan Davis. FRONT ROW: Queen Barbara Moats and King Kenny Lawrence.

MUSIC IN MOSAIC



"Reach Out in the Darkness"



As curtain opens on Music in Mosaic as the Mix



For the finale the Mixed Chorus sang a medley of songs.



Chorus sings "It is up to Us" and "Dear World."

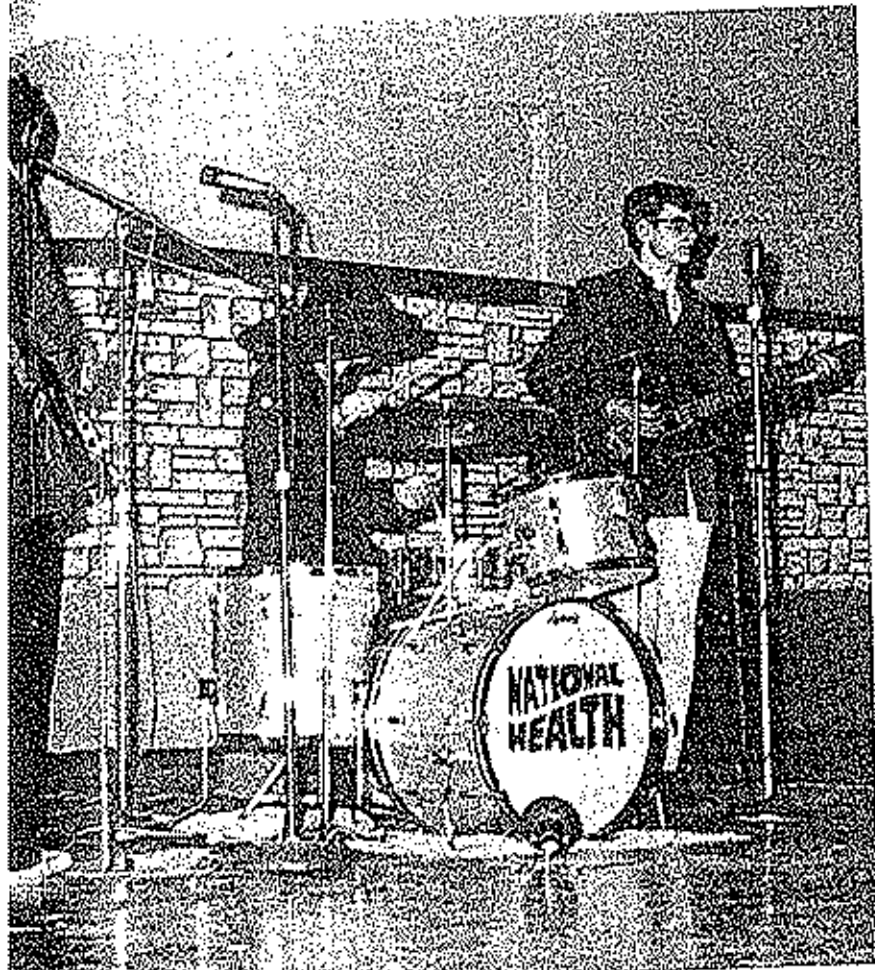
Right: One of the several Senior Solos is sung by Ann Masey.



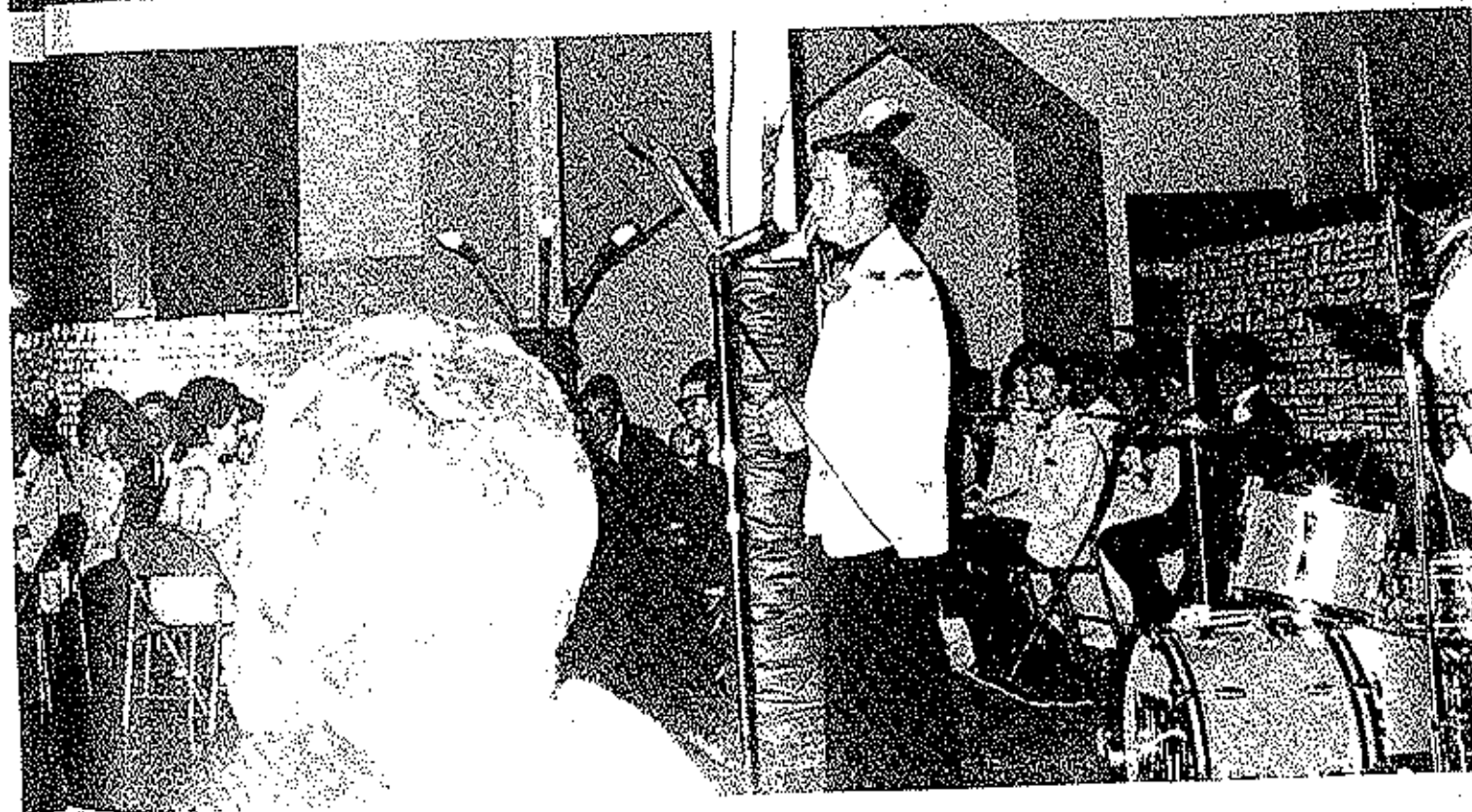
Left: The Mixed Quintet sings "The Wind" written by Dennis Jett.

JUNIOR SENIOR PROM





The Junior Senior Prom of 1969 entitled "Camelot" was a highlight of the school year. Students and faculty members enjoyed the sound of the "National Health" group. The traditional ring distribution to juniors captured the spotlight that evening. FAR LEFT: A junior received his rings; LOWER LEFT: Students begin work for the buffet; CENTER: Everyone entered through "ye old drawbridge." CENTER: The National Health; BELOW: Sr. Class President, Buz Coon.





The annual coronation of the Queen of Popularity and Beauty was held during the half-time activities of the game between Eldon and Tipton on January 24, 1969. This year students selected Miss Susan Clark. She reigned at the after game dance, where the students danced to the music of "The Wild Things" from Columbia. Fresh. maids Paula Herman, Kay Kelsey; Soph. maids Judy Burris, Marilyn Franklin; Jr. maids Pat Shepard, Martha Waiter; Sr. maids Debbie Baucom, Brenda Abart.



Left to right: Sharon
Bucannon, Lisa Bislex,
Debbie Amsinger.

GIRL'S AND BOYS STATE

Left to right: Milan
Johnson, Bert Schulte.



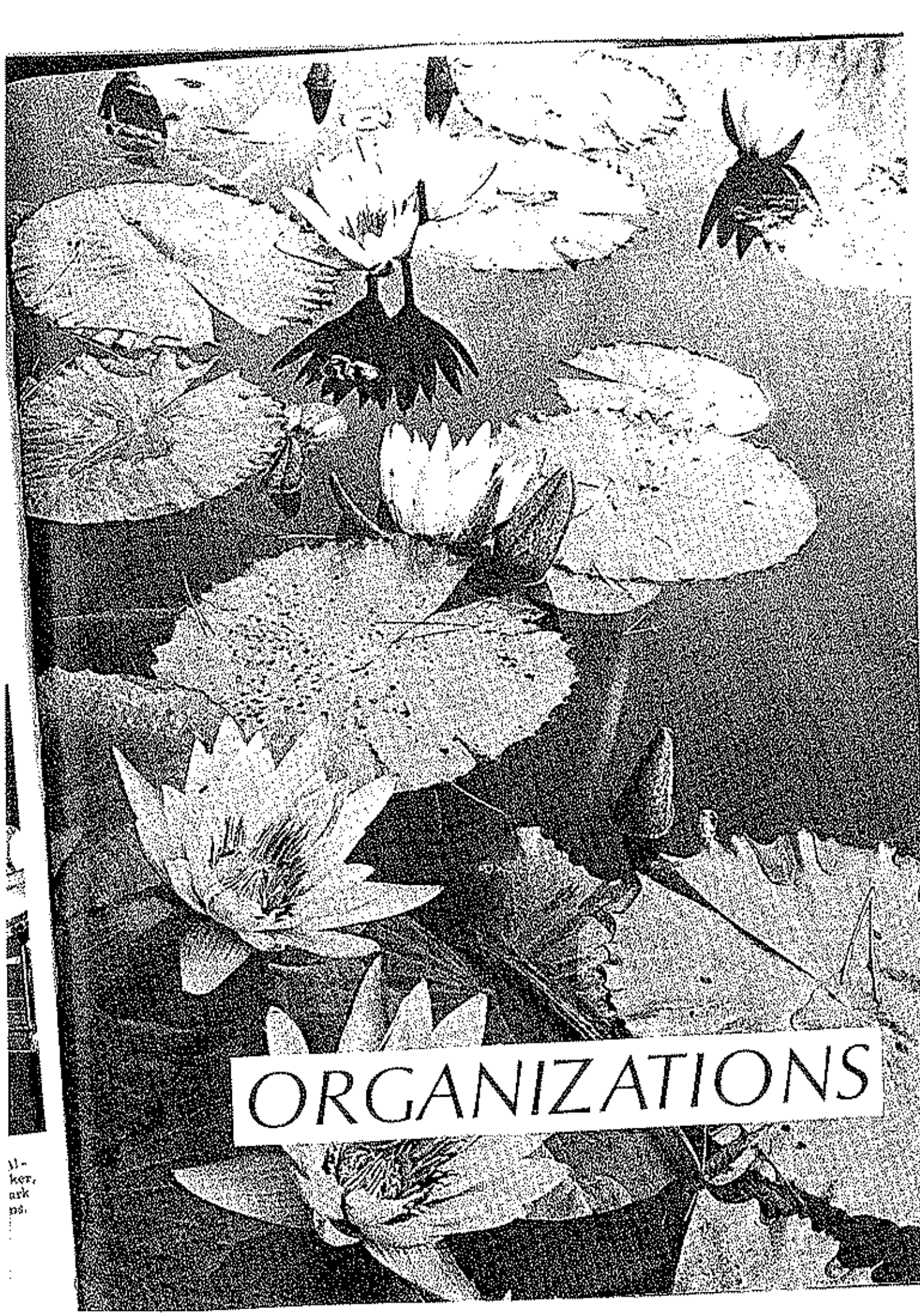


SADIE HAWKINS DAY

One of the most fun-filled events of the year was Sadie Hawkins Day. Despite the weather the events went on without much trouble. There were many different and exciting events. There was a pie eating contest, tug of war between classes, leap frog, 50 yard dash and the traditional grand chase.



Upper left: Sandra Wyrick, Bob Breen, Dan Rand, Mary Alpers, Steve Farris. Upper right: Bruce Cato, Nita Shoemaker, Gary Kidwell. Lower Left: Terri Madole. Lower right: Mark Hodges, Larry Boulware, Danny Naughton, Roger Williams.



ORGANIZATIONS

11-
ker,
ark
ns.

STUDENT COUNCIL



FIRST ROW--John Gambill, Jerry Porter, Crysty Stark, Ruth Greenway, Janet Porter, Barbara Topliff, Terri Bradshaw, Patty Popp. SECOND ROW--Terry Fischer, Dennis Jett, Milan Johnson, Marilyn Kuster, Pat Shepherd, Sid Popejoy, Nanci Torrence, Lisa Bislex, Nita Shoemaker. THIRD ROW--Mark Atwell, Buzz Coon, Bruce Cato, Mike Dowlet, Ross Harrison, Harry Harvey, Bob Frederickson, Dan Davis, David Morris, Virginia Whitney.

Eldon's 68-69 Student Council had a very good year. They sponsored some new activities this year. One of the first was a talent show on Freshman Initiation Day. Little White House Conference was another new activity that the Student Council worked very hard on to make successful. Student Council members also put out an extra effort by working at basketball games. Along with these new activities there were also the annual events, Homecoming, Queen of Popularity and Beauty, and Sadie Hawkins Day. It was a big year for Eldon High School Student Council.



Left: Student Council Officers: President: Dan Davis, Treasurer: Barb Topliff, Secretary: Linda Sweaney, Vice-President: Ross Harrison.

HONOR SOCIETY

To be in Honor Society is a privilege. Those students who make it should be congratulated. Honor Society students represent the high academic achievement of E.H.S. students.

RIGHT: SECOND SEMESTER INDUCTEES:
FIRST ROW Left to Right, Beverly Elseman, Kay Schmidt, Libby Howell, Marcella Simpson. **SECOND ROW**, Dennis Jett, Virginia Whitney, Susan Jett, David Jenkins.

FIRST SEMESTER INDUCTEES:
 Dan Davis, Robert W. Reed, Beverly Koerner, Nancy Torrence, Sid Popejoy, Sharon Buchanan, Carol Worthy, Debbie Smith, Doug McKinley, Debbie Amsinger.



FRONT ROW. LEFT TO RIGHT. Diane Vaughn, Beverly Elseman, Kay Schmidt, Libby Howell, Marcella Simpson, Nancy Torrence, Martha Waite, Barbara Thompson. **SECOND ROW.** Marilyn Berkstresser, Virginia Whitney, Sharon Buchanan, Lisa Biselx, Beverly Koerner, Debby Amsinger, Susan Jett, June Hlavacek, Susan Clark, Lynda Houghton. **THIRD ROW.** David Jenkins, Dan Davis, Milan Johnson, Dennis Jett, Kenneth Barnhart, David Robb, Doug McKinley, Charles McKinley, Robert Reed, Sid Popejoy.

REFERET

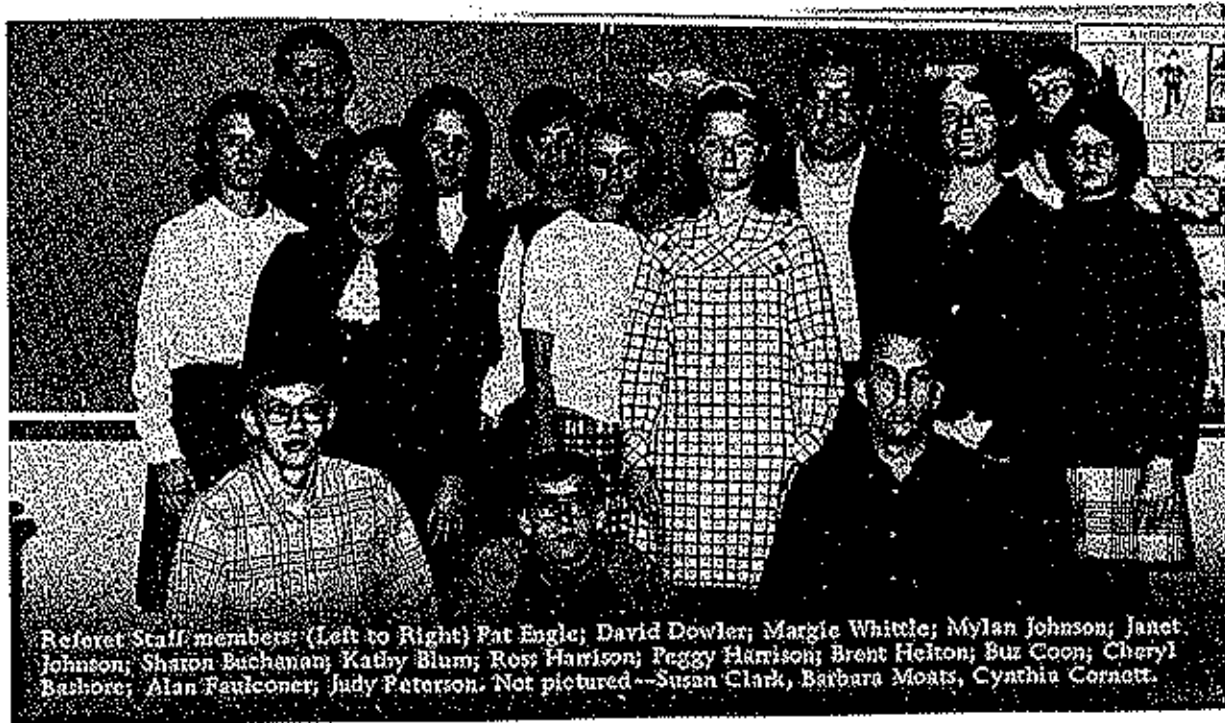


The Referet staff has worked hard and well to produce an improved yearbook for E.H.S. students and faculty. Many modern journalism techniques were used. Staff members worked frequently after school, in the evenings, and topped of their year with a Pizza party.

LEFT: Kent Buchler, Editor
Sharon Buchanan, Asst. Editor



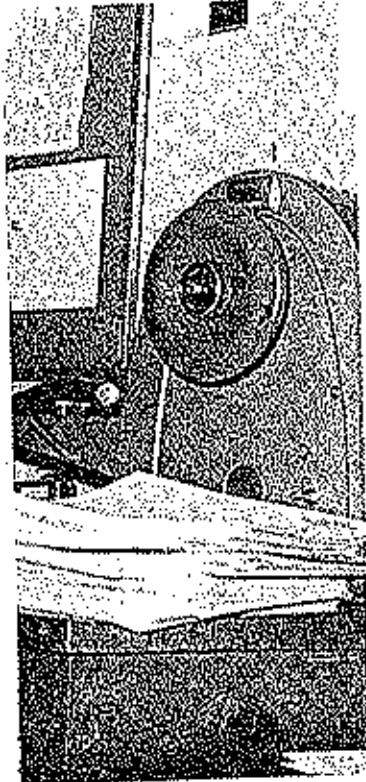
CENTER LEFT: Referet Advisor, Mr. Doug Tarpley.
RIGHT: Staff is hard at work!



Referet Staff members: (Left to Right) Pat Engle; David Dowler; Margie Whittle; Mylan Johnson; Janet Johnson; Sharon Buchanan; Kathy Blum; Ross Harrison; Peggy Harrison; Brent Helton; Buz Coon; Cheryl Babbore; Alan Faulconer; Judy Peterson. Not pictured--Susan Clark, Barbara Moats, Cynthia Cornett.

MAROON AND GOLD

The M & G got a real face lifting this year. The staff is now an organized class, studying journalism. The face lifting included several new columns, "Way We See It," "Facts, Faces, and Fables of E.H.S.," "Your Letters to the Editors." M & G staff members have learned much about the field of journalism. The paper has been more of a service to students, faculty, and community, the function of a school newspaper.

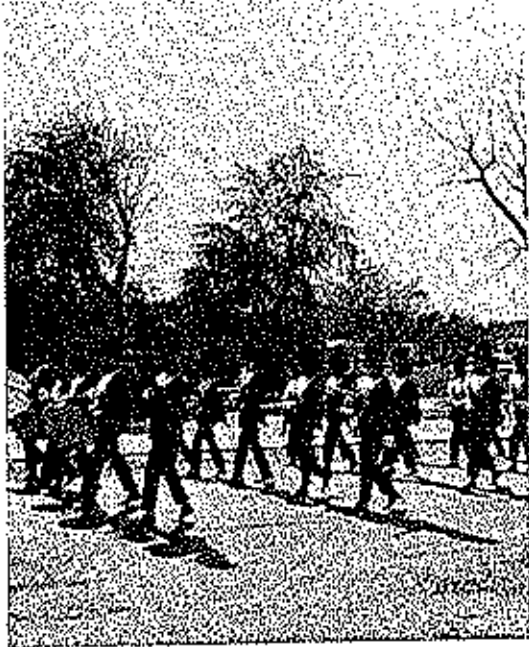


TOP LEFT: Adviser, Mr. Doug Farpley; CENTER: Editor-- Susan Clark, Asst. Editor-- Ross Harrison; TOP RIGHT: "We met our deadline!"



Staff members (left to right): Barbara Moats; Margie Whittle; Reggie Eads; Barbara Thompson; Sheila Fairchild; Fatti Poppi; Richard Sale; Kay Neumann; Barbara Topf; Ross Harrison; Nancy Torrance; Sue Gardner; Steve Spencer; Linda Manning; Kathy Love; Susan Clark; Franz Koock.

BAND



The members of the Eldon High School Band have been very busy students this year. They have been actively engaged in most of the school's activities. They performed for two football, and many basketball games. They were in the homecoming parade. They performed for the chili-supper audience and attended district and Tri County music contests. The band placed very high in these. 1968-1969 has been a busy year for the band.

Band in homecoming parade



ROW ONE (left to right) John Wieneman, Judy Peterson. ROW TWO: Willa Huskey, Cathy Blum, Yvonne Crum, Libby Howell. ROW THREE: Gloria Helmer, Rhonda Hickey, Peggy Harrison, Sue Clotworthy, Susie Yow, Mary Hlavacek, Vicki Rounton, Betty Watkins, Janet Johnson. ROW FOUR: Ruth Greenway, Sheryl Fisher, Mary Melton, Mike Meyer, Peggy Opie, Pat Engle, Cathy Atkinson, Janice Burlingame, Suzanne Kirk, John Gambill, James Doolin, Sam Merritt. ROW FIVE: Daniel Thacker, Pat Quigley, David Robb, Keith Houghton, Dennis Erickson, Mike Dowler, David Dowler, Dan Davis, Brent Helton, Jerry Schupp, Jana Crum, Milan Johnson, John Calne.

Foreign Exchange Student FRANZ KOECK

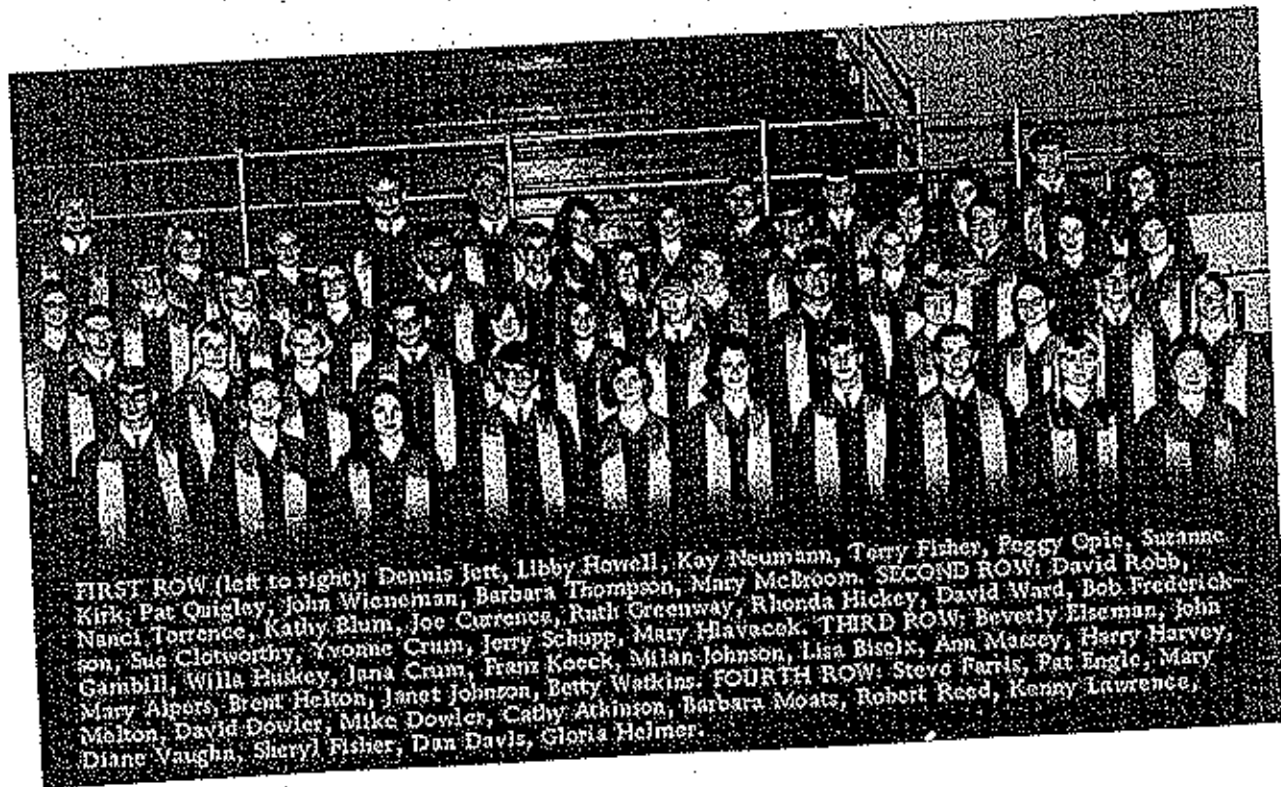
Franz Koeck came to Eldon High School from Bavaria, Germany. He wants to be a history teacher, teaching at the college level. He returned to Germany June 28, 1969. He is going to college and then into the German Army to serve the required 18 month enlistment. While in America he lived with the Jett family of Eterville. Franz was active in E.H.S. life--the music department, the journalism department, track, and football. Franz added much to 1969 life at E.H.S. We trust that he will always treasure memories of his experiences here, at Eldon High School.

LEFT: "The Human touch"
 CENTER LEFT: Soccer champ
 CENTER RIGHT: Jam session.
 LOWER LEFT: Franz Koeck Sr. (Father); Ottilie (mother); Christina (sister); Joseph (brother).
 LOWER RIGHT: Arriving from Germany.



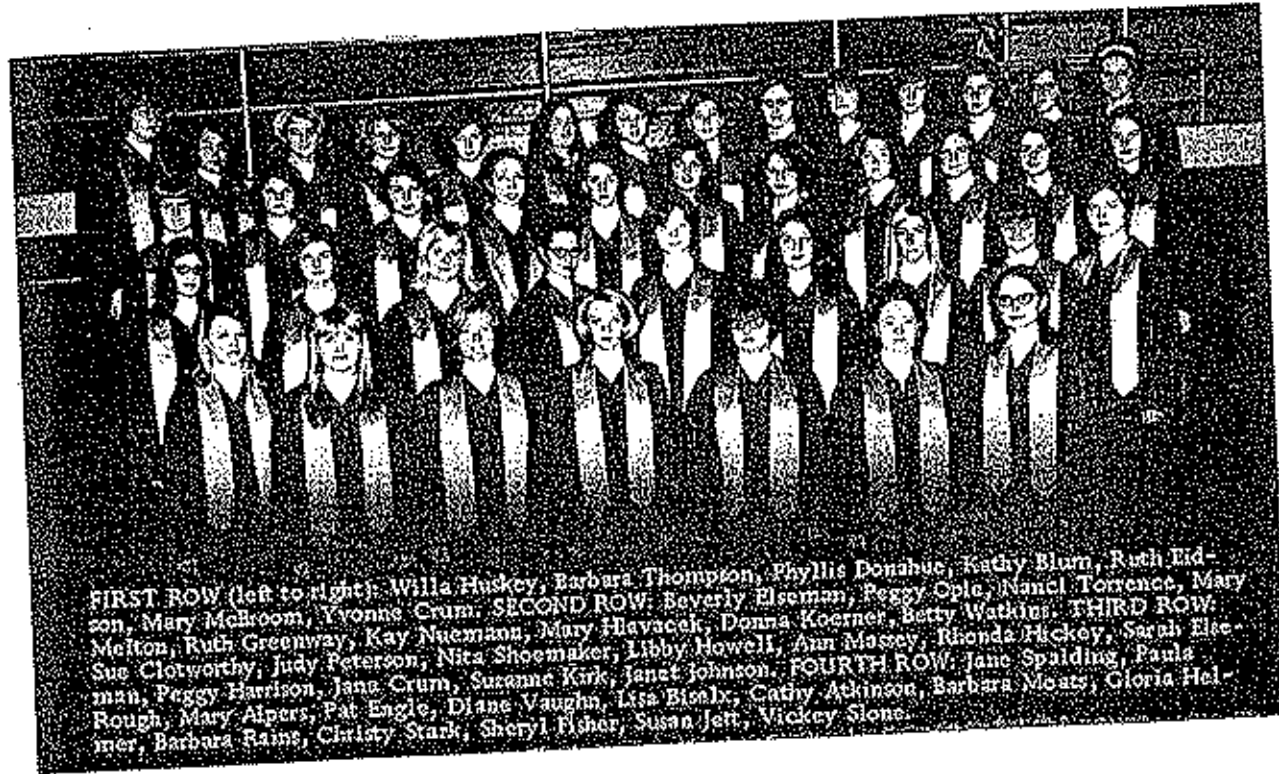
MIXED CHORUS

Eldon High School vocal music department put forth much effort this year to make their department a fine one. As usual, they participated in the Christmas assembly. As usual, they came home from the music contests with "1" ratings. There was a new activity in the vocal music department this year. The Boys Glee gave an assembly for the Junior High. To finish their great year, they gave their student variety show, "Music in Mosaic".



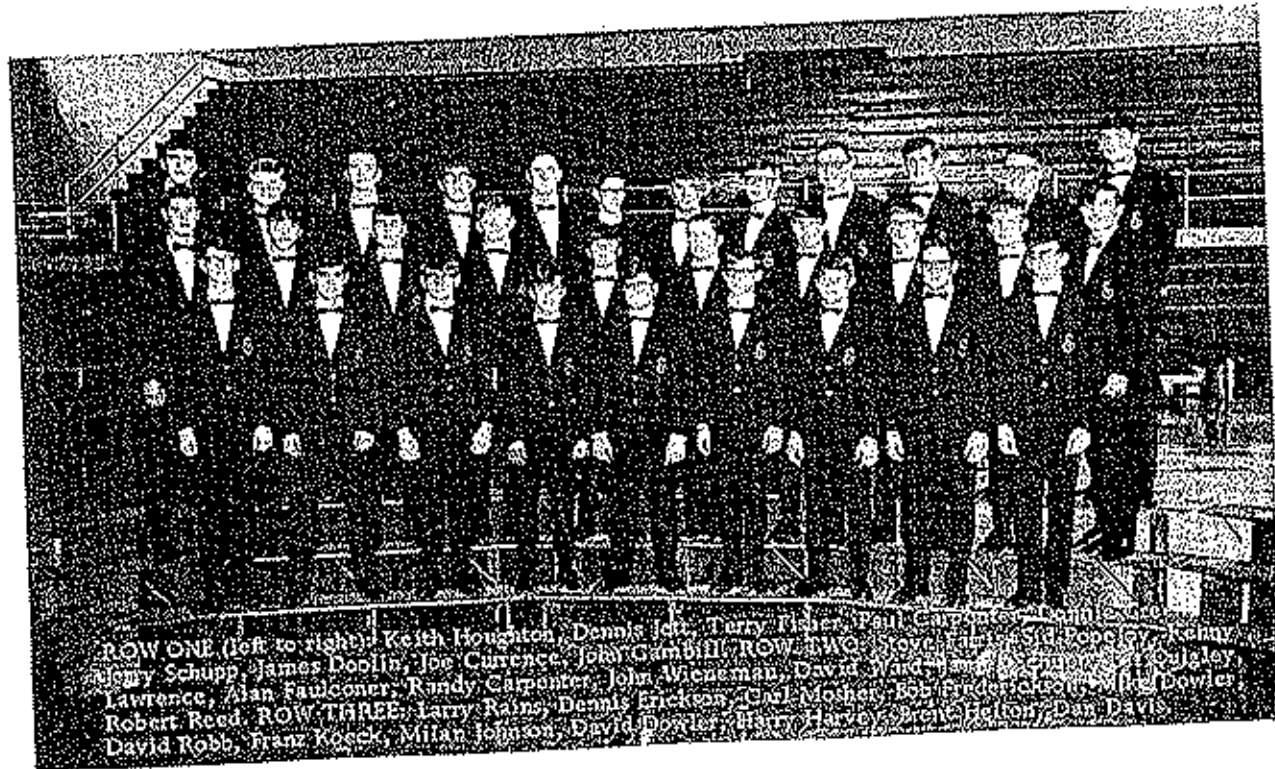
FIRST ROW (left to right): Dennis Jett, Libby Howell, Kay Neumann, Terry Fisher, Peggy Opie, Suzanne Kirk, Pat Quigley, John Wiensman, Barbara Thompson, Mary McLoom. SECOND ROW: David Robb, Nancy Torrence, Kathy Blum, Joe Currence, Ruth Greenway, Rhonda Hickey, David Ward, Bob Frederickson, Sue Clotworthy, Yvonne Crum, Jerry Schupp, Mary Hlavacek. THIRD ROW: Beverly Elsemann, John Gambill, Willa Huskey, Juna Crum, Franz Koeck, Milan Johnson, Lisa Bisek, Ann Matzey, Harry Harvey, Mary Alpers, Brent Helton, Janet Johnson, Betty Watkins. FOURTH ROW: Steve Farris, Pat Engle, Mary Malton, David Dowler, Mike Dowler, Cathy Atkinson, Barbara Moats, Robert Reed, Kenny Lawrence, Diane Vaughn, Sheryl Fisher, Dan Davis, Gloria Helmer.

GIRLS GLEE



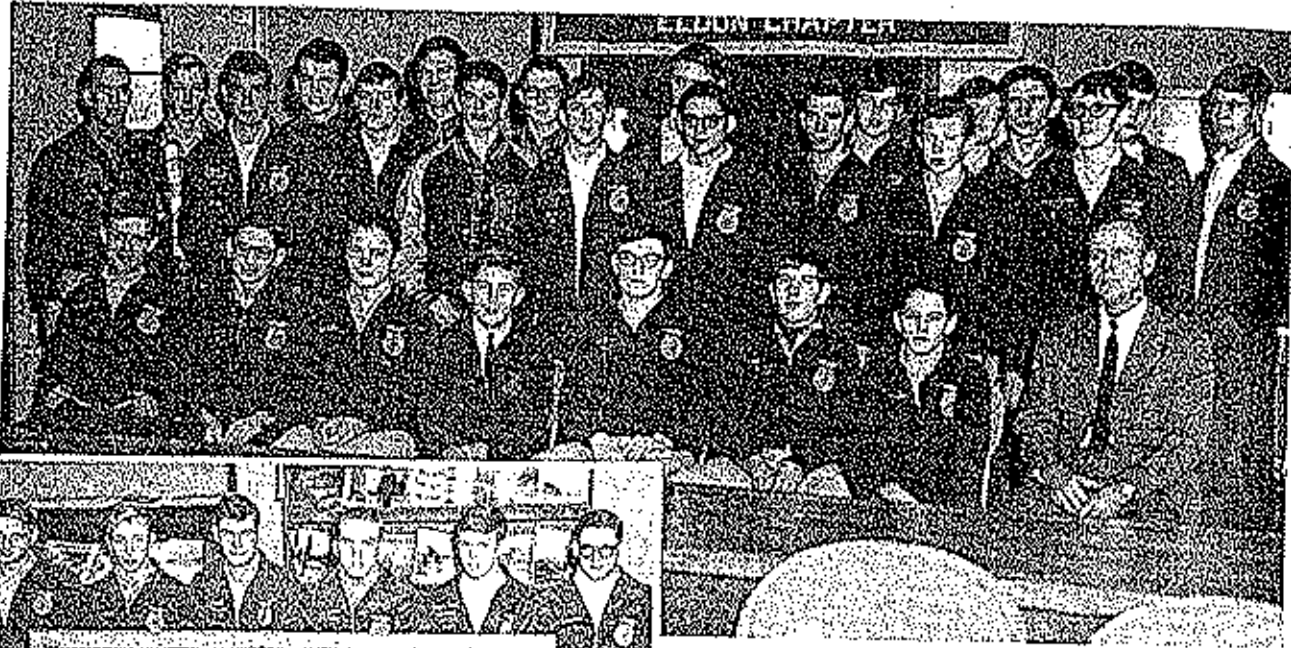
FIRST ROW (left to right): Willa Huskey, Barbara Thompson, Phyllis Donahue, Kathy Blum, Ruth Eidson, Mary McBroom, Yvonne Crum. SECOND ROW: Beverly Elseman, Peggy Ople, Nanci Torrence, Mary Melton, Ruth Greenway, Kay Nuemann, Mary Hlavacek, Donna Koerner, Betty Watkins. THIRD ROW: Sue Clotworthy, Judy Peterson, Nita Shoemaker, Libby Howell, Ann Massey, Rhonda Hickey, Sarah Elleman, Peggy Harrison, Jane Crum, Suzanne Kirk, Janet Johnson. FOURTH ROW: Jane Spalding, Paula Rough, Mary Alpers, Pat Engle, Diane Vaughn, Lisa Bitaly, Cathy Adkinson, Barbara Moats, Gloria Helmer, Barbara Rains, Christy Stark, Sheryl Fisher, Susan Jeff, Vickie Stone.

BOYS GLEE



ROW ONE (left to right): Keith Houghton, Dennis Jett, Terry Fisher, Paul Carpenter, Ronald Lee, Jerry Schupp, James Doolin, Joe Currence, John Gambill. ROW TWO: Steve Jett, Sid Poppley, Kenny Lawrence, Alan Faulconer, Randy Carpenter, John Wickerman, David Ward, James Schmitt, Douglasley, Robert Reed. ROW THREE: Larry Rains, Dennis Erickson, Carl Mosher, Bob Frazier, Tommie Dowler, David Robb, Franz Koeck, Milan Johnson, David Dowler, Harry Harvey, Brenda Helton, Dan Davis.

FFA



(Left to Right) **FIRST ROW:** Albert Settler, Joe Currence, Jerry Porter, Kim Dowel, Mike Coon, Billy Koerner, Ronald Houston, Mr. Greenway. **SECOND ROW:** Buz Coon, Gary Hatch, Bert Schulte, Jim Cox, Mark Pearson, David Graham, Joe Currence, George Howser, Ken Chapman, John Ayers. **THIRD ROW:** Glen Bashore, Bob Tammihill, Dennis Kidwell, Ray Rogers, James Schupp, Jim Winkler, Gary Kidwell, Dwayne Porter.

FHA



(Left to Right) **FIRST ROW:** Debbie Amsinger, Olive Cotten, Donna Apperson, Sharon White. **SECOND ROW:** Nancy Bedwell, Cathy Duncan, Margie Whittle, Judy Sears, Carolyn Scriver. **THIRD ROW:** Cheryl Hachler, Sheila Fairchild, Linda McLaughlin, Janice Fletcher. **FOURTH ROW:** Kathy Love, Kathy Stone, Marsha Dickerson, Myrna Bacon, Dinah Jarrett. **FIFTH ROW:** Carolyn Hodel, Gayla Ault, D'Ann Jenkins, Marilyn Berkotresser, Kathy Bonnet, Debbie Cornet, Barbi Moats, Miss Hartman, Julie Wood, Carol McCubbin, Marilyn Kuster.





1st ROW, Left to Right: Dennis Jett, Susan Jett, Milan Johnson, Pam Bolt, Lisa Bisek, Nanci Torrence, Franz Koeck. 2nd ROW, Peggy Harrison, Kathy Blum, Mary Melton, Marilyn Whitney, Cheryl Bashore, Cathy Atkinson, Janet Johnson, Virginia Whitney, Debbie Widmer. 3rd ROW, Julie Wood, Buz Coon, Mike Dowler, Danny Davis, Kenny Lawrence, David Dowler, Lynda Houghton.

INDUSTRIAL ARTS CLUB



1st ROW, Left to Right: Bob Frederickson, David Graham, Tommy Graham, Danny Naughton. 2nd ROW, Donna Henley, Larry Sears, Billy Barker, Sherry Blankenship, Frank Newby. 3rd ROW, Tim Davis, Steve Spencer, Richard Thomas, Danny Opie, Mike Feere, David Robb, John Caine, Donnie Brantetter.

FBLA



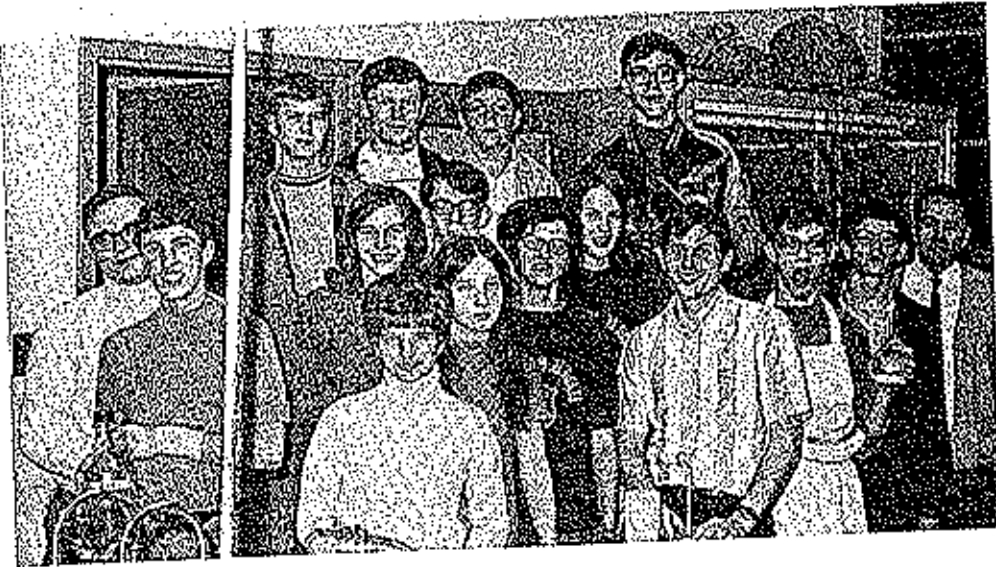
FIRST ROW: Beverly Koerner, Margie Whittle, Diane Vaughan, Darlene Simpson, Brenda Richardson.
SECOND ROW: Rick Jones, Billy Koerner, Kathy Bonnet, Marilyn Berkstresser, Carol McCubbin, Linda McLaughlin. THIRD ROW: Brent Helton, Dan Davis, Mike Dowler, Carl Mosher. Sponsor: Mrs. Carol Martin.

OFFICE WORKERS



Janet Porter, Rita Snodgrass, Donna Apperson, Barbara Topliff, Darlene Simpson, Brenda Lewis, Sheila Fairchild, Barbara Moats, Debbie Byrd, Ann Massey, Susan Clark, Janice Fletcher.

SCIENCE CLUB



(Left to Right) FRONT ROW: Charles McKinley, Pam Bolt, Marilyn Whitney, Carol Worthy, Robert Reed, Milan Johnson, Steve Williams, Mr. Gilford, SECOND ROW: Mr. Tye, Linda Houghton, Keith Houghton, Janet Johnson, BACK ROW: Pat Quigley, Frank Bodine, Tony Cier, Ross Harrison.

DRAMA CLUB



(RIGHT): Sponsor, Jim Ward, "coaches" play cast.

(Left to Right, Below), FIRST ROW: Mary Melton, Lisa Bisek, Nancy Torrence, Phyllis Donahue, SECOND ROW: Alan Faulconer, Paul Carpenter, Cathy Atkinson, Patti Popp, Mr. Ward, THIRD ROW: Brent Helton, Robert Reed, Kent Beuhler, Kenny Lawrence, David Dowler.





Barbara Thompson



June Hlavacek



Mary McBroom

"A" and "B" Team Cheerleaders

Eldon High has been gifted with a winning team and an inspiring season. It takes skill and determination to make a winning team. It takes the will to win and a great school spirit. With the Pep Club and Cheerleaders we have the complete team. We would like to pay tribute to the inspiration the Pep Club and the Cheerleaders have given us under President Susan Clark. Their success has not gone unnoticed.



Debbie Widmer



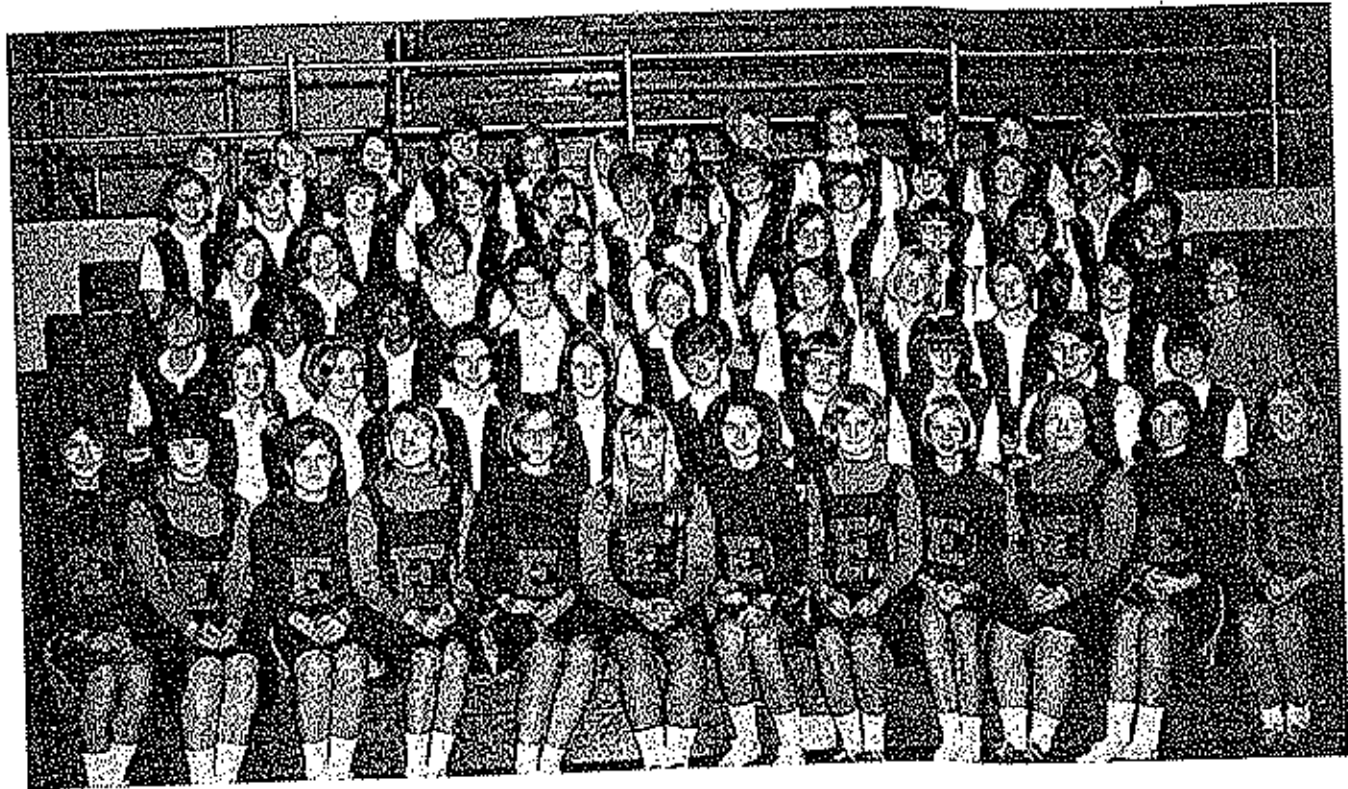
Cynthia Cornett



Martha Waite

"B" Team (Left): Kathy Blum, Susan Jett, Suzanne Kirk, Janette Porter, Nancy Pierson, Susie Yows.

PEP CLUB



Left to Right--ROW 1: Susie Yows, Cynthia Cornett, Janet Porter, June Hlavacek, Susan Jett, Barbara Thompson, Suzanne Kirk, Martha White, Kathy Blum, Mary Jane McReom, Nancy Pearson, Debbie Widmer, SECOND ROW: Linda Moughton, Debbie Baucum, Susan Clark, Janet Johnson, Pam Bolt, Sue Clotworthy, Beverly Koerner, Kathy Bonnet, Joyce Robbins-ett, THIRD ROW: Gaye Williams, Sharon Thornton, Wilma Thornton, Debbie Cornett, Patti Popp, Lisa Eiselt, Nancy Torrence, Phyllis Donahue, Kay Nueman, FOURTH ROW: Susan Topitsi, Loretta Burney, Janet Dye, Julie Wood, Jane Spalding, Kay Schmit, Kathy Currence, Vicki Routen, ROW FIVE: Gloria Helmer, Marilyn Kuster, Cryszy Stark, Peggy Harrison, Loretta Wilson, Myrna Bacon, Sharon Buchanan, Cheryl Huchler, Carol McCubbin, Linda Shaw, Mary Alpers, SIXTH ROW: Willa Huskey, Bonnie Abbot, Sharon Bashore, Marsha Baucum, Peggy Opie, Mary Hlavacek, Cathy Campbell, Wanda Lewis, Debbie Landon, Vicky Stone, Nita Shoemaker, Judy Burris, Sponsors, Miss Hodson, Miss Dillinger.



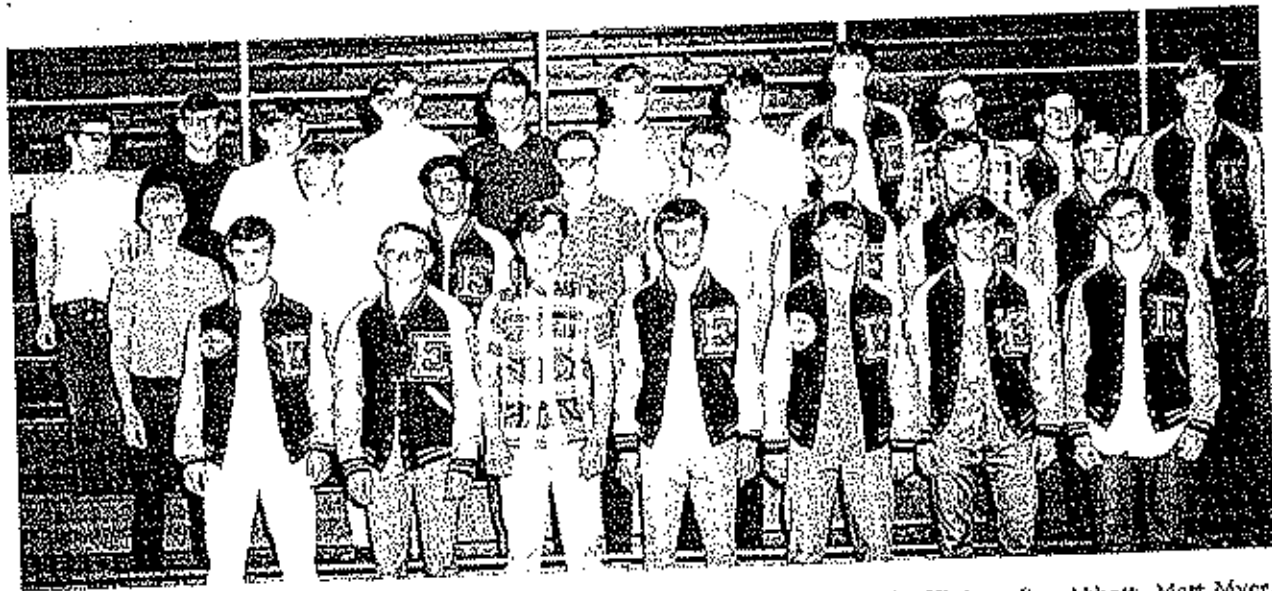
The 1969 Pep Club had a very good year. They cheered our football and our basketball boys through a very successful and rewarding year. The Pep Club boosted school spirit with numerous Pep Rallies and helped to earn the Sportsmanship Award at the Eldon Invitational Tournament.

G.A.A.



FIRST ROW: left to right, Betty Spencer, Wanda Lewis, Sharon Buchanan, Sharon Bashors, Mary Hlavacek, Coach, Nancy Hodson. SECOND ROW: Connie Eastburn, Becky Birdsong, Julie Wood, Linda Wood, Loretta Wilson, Cheryl Hochler. THIRD ROW: Willa Huskey, Nita Shoemaker, Erma Scott, Pat Engle, Janet Johnson, Linda Shaw, Marsha Baucum. FOURTH ROW: Carol Worthey, Vicki Sloan, Debbie Landon, Paula Roach, Suzanne Kirk, Peggy Opie, Jane Spalding, Barb Sullins. FIFTH ROW: Kathy Williams, Susan Jett, June Hlavacek, Lynda Houghton, Pam Bolt, Susan Clark, Barbe Moats, Debbie Widmer.

"E" CLUB



FIRST ROW: Dennis Jett, Kenny Barnhart, Randy Claxton, Franz Koeck, Doug McKinley, Jim Abbott, Matt Myer. SECOND ROW: Ricky Wilson, Alan Faulconer, Andy Rigalado, Larry Wrye, Ross Harrison, Milan Johnson, Frank Bodine, Mike Ahart. THIRD ROW: Harry Harvey, Greg Tompkins, Charley Connel, Glen Bashore, Dennis Kidwell, Danny Pointer, Larry Rains, Jim Miller, Joe Currence, David Morris.



COE



Top left, Officers: FRONT ROW: Brenda Ahart, Ricky Vernon, Jim Hutton. SECOND ROW: Becky Zimmer, Kenneth Hicks, Gay Williams.

Top right: COE works on Homecoming float.

Bottom left: Hard working COE members.

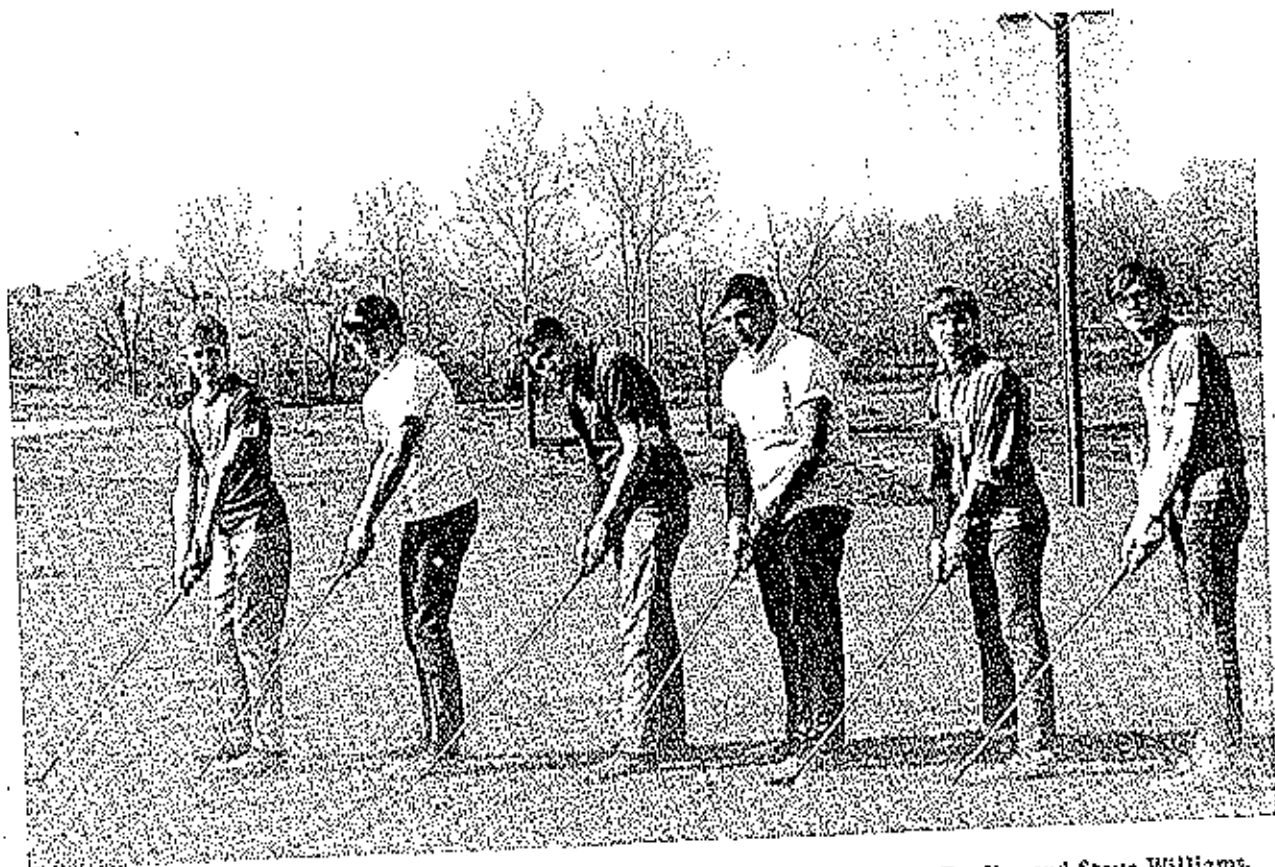
Bottom right: COE does its thing.

Night brings a beauty all its own
to the Ozarks

SPORTS

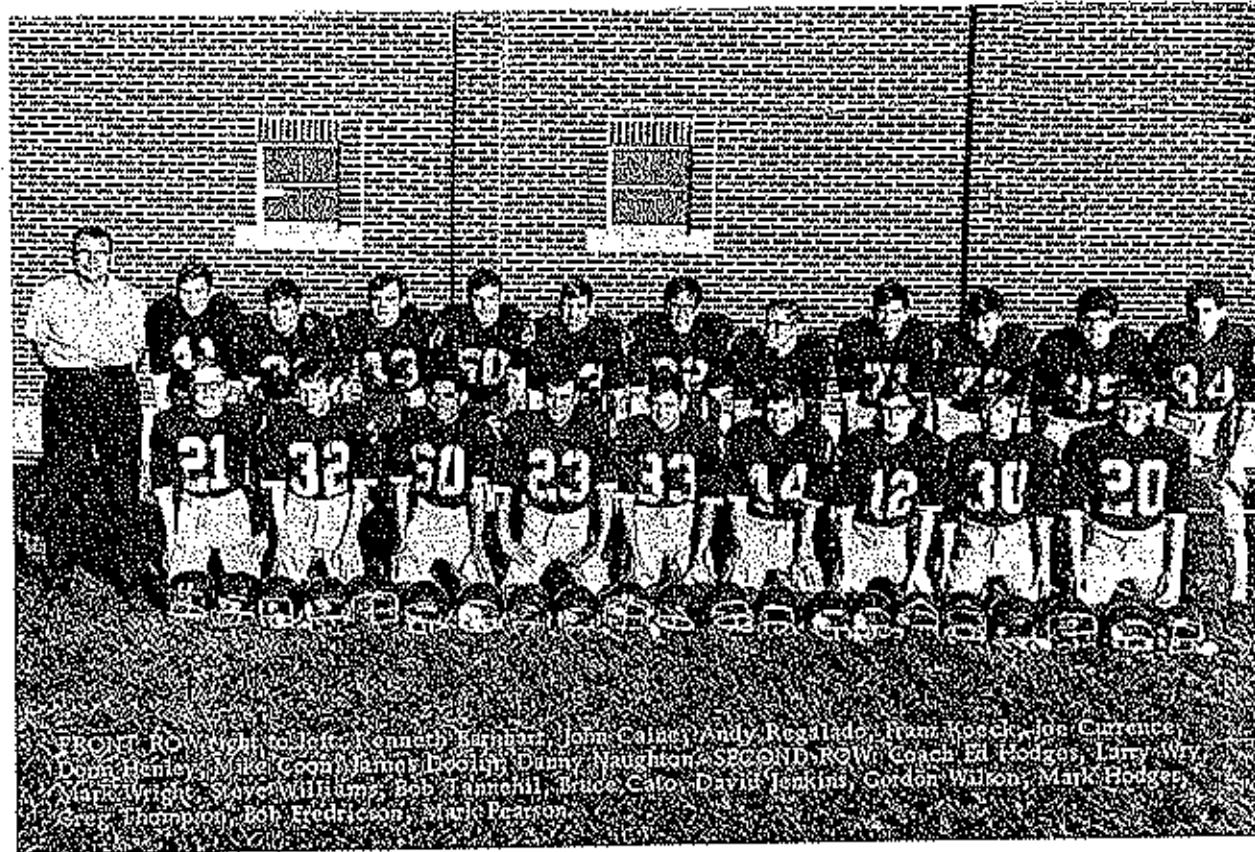
E.H.S. GOLF TEAM

The golf team had a fairly good year winning three meets and placing 3rd in Tri-County. When asked why the team did so well the boys replied that it was because of their coach, Mr. Helms. Because the team is young (1 Freshman, 4 Sophomores, 1 Senior) we should look forward to more achievements from this team.



Left to Right. Ricky Wilson, David Ward, Ricky Jones, Bob Shoemaker, James Doolin, and Steve Williams.

"B" TEAM SQUAD



FRONT ROW (left to right): Kenneth Karpfarr, John Calley, Andy Regalado, Franz Mosler, Jon Curran, Donn Hanley, Mike Coon, James Doolin, Danny Naughton. SECOND ROW: Coach Ed Hodges, Larry Wry, Mark Wright, Steve Williams, Bob Jannerill, Bruce Cato, David Jenkins, Gordon Walker, Mark Hodges, Greg Thompson, Bob Fredrickson, Marie Pearson.

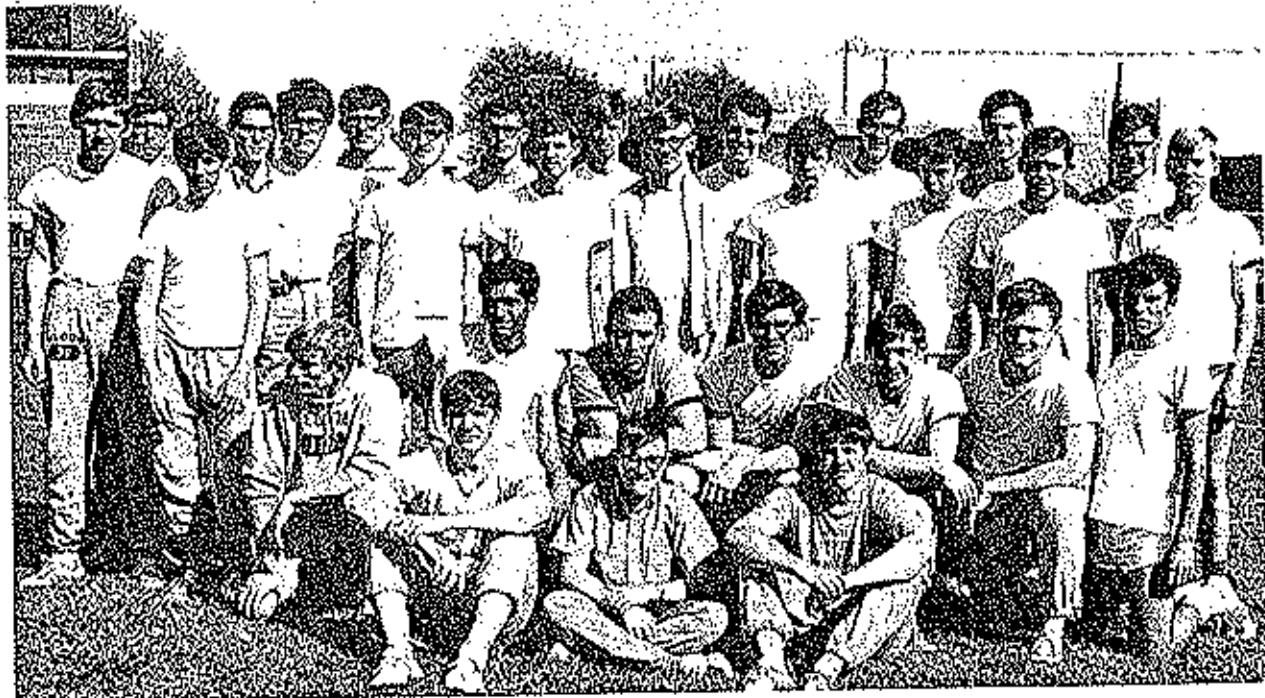
FRESHMAN SQUAD



SITTING: Mark Luetkemeyer. FIRST ROW: Steve Callison, Donnie Green, Buddy Faulconer, Sam Memitt. SECOND ROW: Jim Abbott, Randy Thompkins, Mike Faulconer, Gary Shepard, Mike Meyer. THIRD ROW: Herman Harrison, Terry Fisher, Mark Atwell, Ray Rogers, Keith Whitworth, Coach Bill Tye.

TRACK

V
A
R
S
I
T
Y



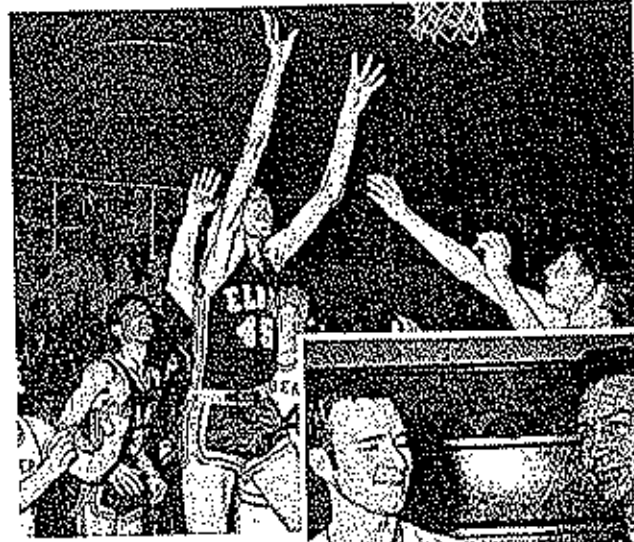
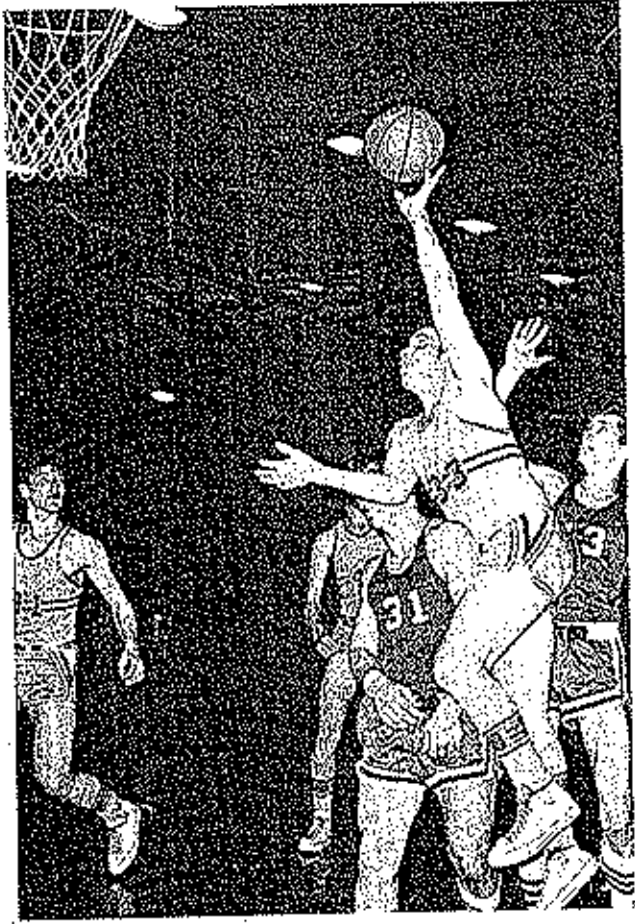
FRONT ROW, LEFT TO RIGHT. Gail Jones, Mark Luethemeyer, Danny Naughton. SECOND ROW. Alan Faulconer, Andy Regalado, Buzz Coon, Jim Miller, Ricky Vernon, Frank Bodine, Franz Koeck. THIRD ROW. Mike Ahart, Greg Vernon, David Robb, Mike Coon, Don Henley, Milan Johnson, Jim Abbott, John Caine, Joe Currence, Mike Stickey. FOURTH ROW. Matt Meyer, Bob Frederickson, Harry Harvey, Ross Harrison, David Morris, Glen Bashore, Gordon Wilson, Bob Tannehill, Clinton Bishop.

F
R
E
S
H
M
A
N



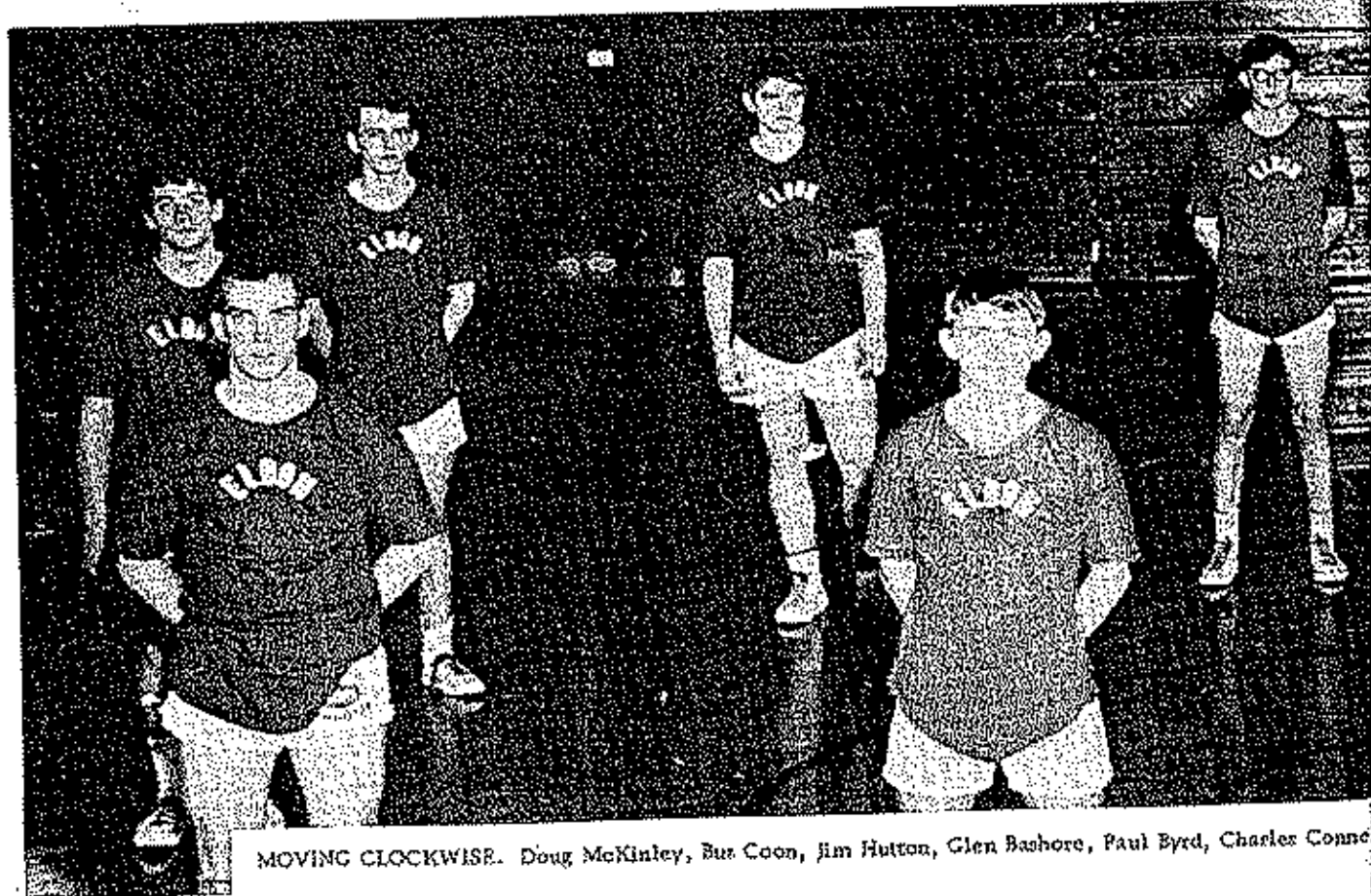
FRONT ROW, LEFT TO RIGHT. Steve Bishop, Herman Harrison, Richard Wry, Donnie Green. SECOND ROW. Tony Hodel, Danny Henley, Cary Shepard, Steve Pitts, Craig Curtiss. THIRD ROW. Mike Faulconer, Mark Atwell, David Hill, Keith Whitworth, Keith Houghton, Sam Merritt, Mike Meyer.

OUR E.H.S.



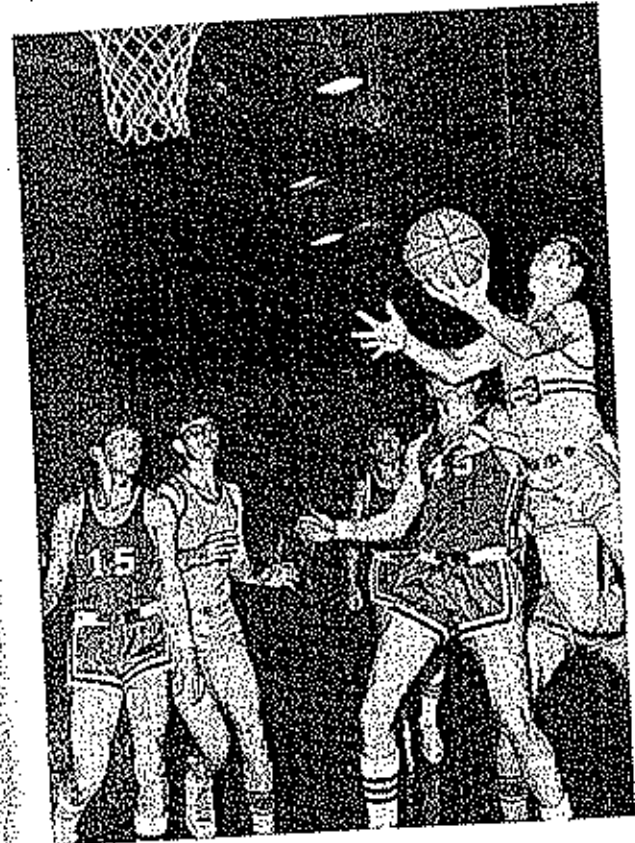
(RIGHT PHOTO)
Freshman Coach:
David Allen.

"A" team. Assistant
Coach Bob Higby.



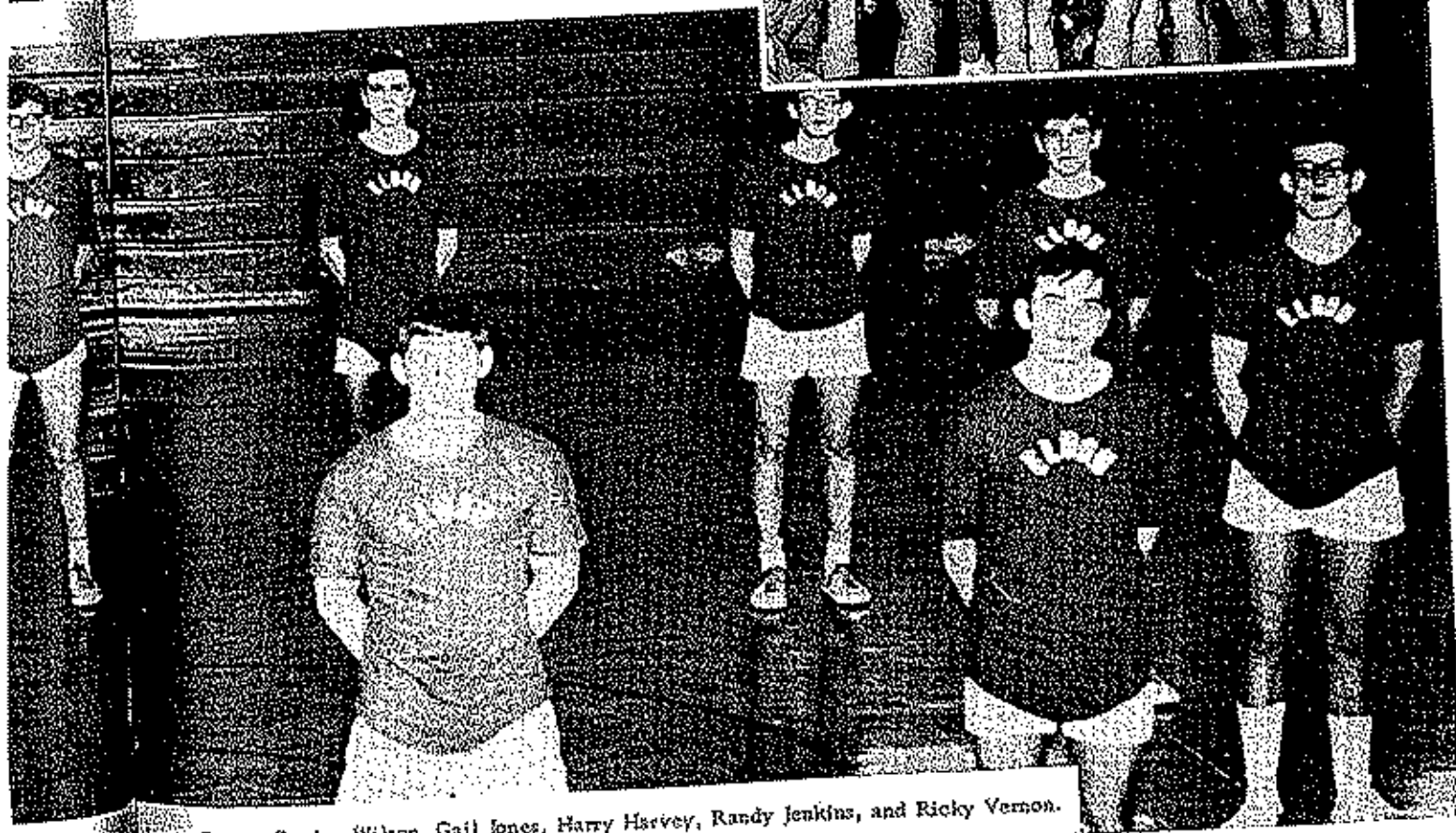
MOVING CLOCKWISE. Doug McKinley, Bus Coon, Jim Hutton, Glen Bashore, Paul Byrd, Charles Conner

BASKETBALL



The man who led the way, Coach: Mac Green.

Champs all the way!



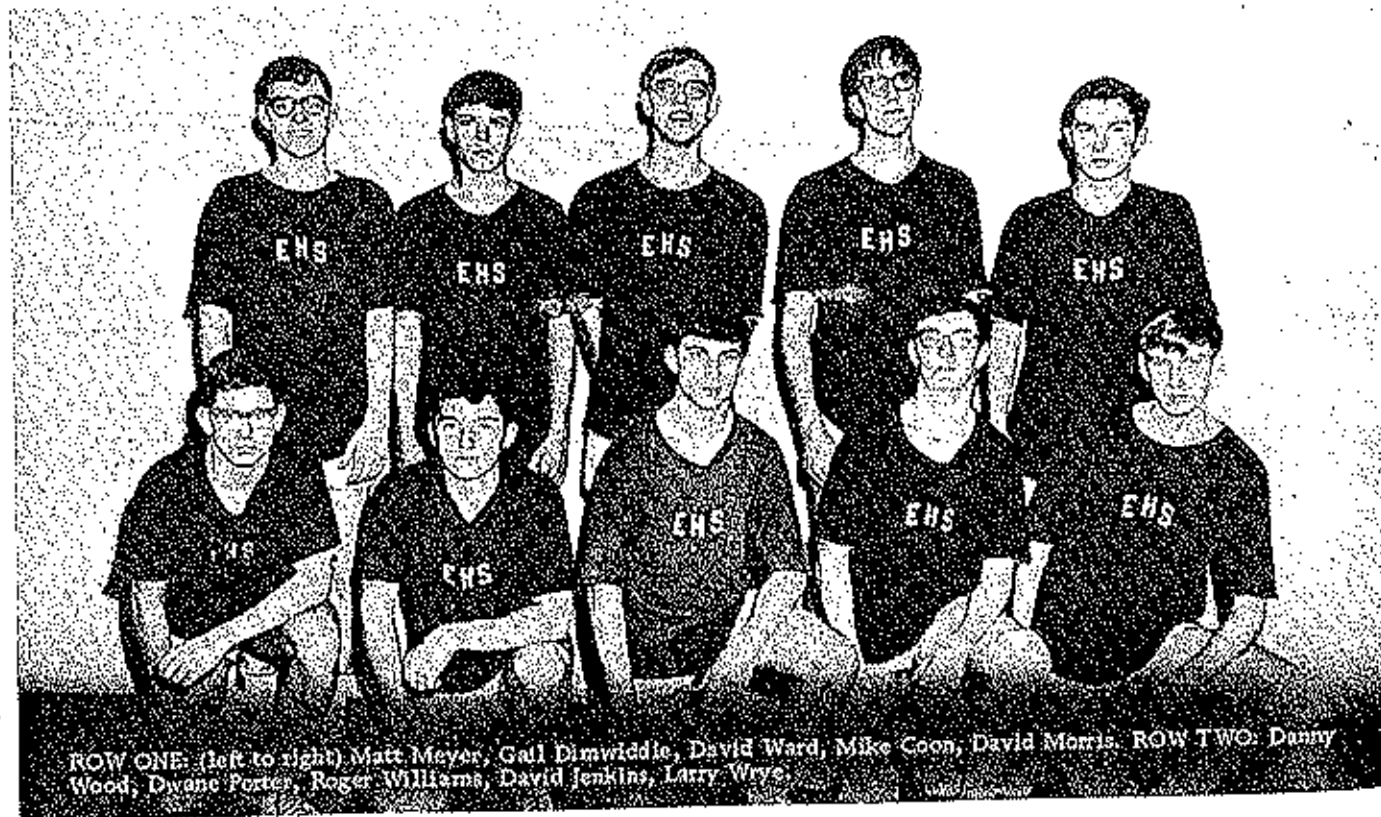
Charles Combs, Larry Rains, Gordon Wilson, Gail Jones, Harry Harvey, Randy Jenkins, and Ricky Vernon.

FRESHMAN SQUAD

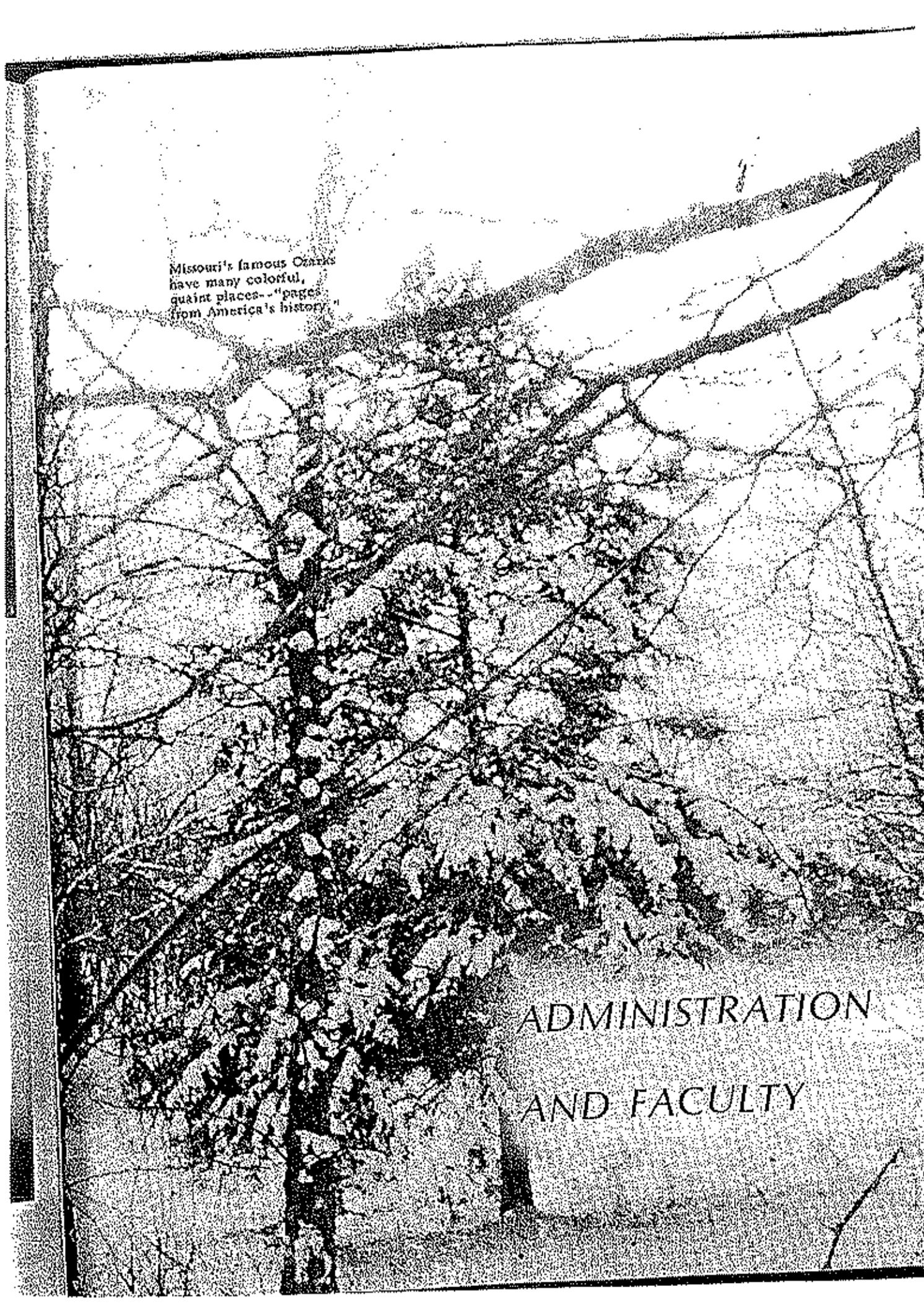


Manager: Mark Luethemeyer. ROW ONE: Sam Merritt, Jim Abbott, Randy Thompkins, Jerry Porter, Craig Curtis, Mike Meyer, Keith Whitworth, Steve Farris, David Byrd, Mark Atwell, John Gambill.

"B" TEAM SQUAD



ROW ONE: (left to right) Matt Meyer, Gall Dimwiddle, David Ward, Mike Coon, David Morris. ROW TWO: Danny Wood, Dwane Porter, Roger Williams, David Jenkins, Larry Wrye.



Missouri's famous Ozarks
have many colorful,
quaint places - "pages
from America's history."

ADMINISTRATION
AND FACULTY

BOARD OF EDUCATION

Our Administrative Board has been a successful one, taking great interest in our school district. Through their effort we have completed our Tri-County Technical School. School Board elections were held this year and Oleph Gier was elected to his first term.



FRONT ROW, Left to Right: Herb Harvey, Harold Clotworthy, Harley Vaughan. SECOND ROW, Oleph Gier, Truman Wrye, and Boyd Clark.

UPPER RIGHT: Mary Farris, Secretary. LEFT CENTER: Neva Hendrix, Secretary to the Principal. RIGHT CENTER: Maxine Shaw, Secretary. LOWER LEFT: Mrs. Denny, Cafeteria Supervisor. LOWER RIGHT: Victor Luetkemeyer, Principal.





LEFT: Claude Ferguson, Counselor.
CENTER LEFT: Walter Mooney,
Assistant Superintendent, Director
of Transportation.
CENTER RIGHT: Mrs. Milburn,
Secretary to Superintendent.



LEFT:
Dr. Lyle D.
Hensley,
Superintendent



E.H.S. FACULTY



Left: John Dowler, Social Studies.
Top Right: Cletus Helms, COE. Middle Right: Geraldine Haldiman, Music.
Bottom Right: Benny Jagers, Industrial Arts.



TOP LEFT: Bill Tye, Science. MID-
DLE LEFT: Bob Higby, P.E. BOT-
TOM LEFT: Barbara Hartman, Home
Ec. TOP CENTER: Jesse Atkinson,
Special Ed. MIDDLE CENTER: Rich-
ard Eastin, Art. TOP RIGHT: Leland
Finley, Industrial Arts. BOTTOM
RIGHT: Mark Hoffman, English.



ABOVE: TOP: David Allen, Math. CENTER: June Bruner, History. BOTTOM: Mac Green, History. ABOVE CENTER: Martin Dillinger, Business. CENTER: Linda Tye, English. ABOVE RIGHT: Roger Fischer, Science. BOTTOM RIGHT: Gary Kapfer, Spanish.



LEFT: Jim Guillford, Science.
CENTER: Don Bradshaw, Auto
Mechanics, RIGHT: Nancy Hodson,
Girls' P.E.



UPPER LEFT: Clifford Greenway, Agriculture.
UPPER RIGHT: Carol Martin, Business Education.
LOWER RIGHT: Gladys Helms, Business Education.





UPPER LEFT: Alice Vernon, Social Studies. TOP CENTER: Douglas Tarpley, English. UPPER RIGHT: Norman Byers, Speech Therapist. CENTER: Jim Ward, English. RIGHT CENTER: Louie Apperson, Building Trades. LOWER LEFT: John Murphy, Drafting.



Left to Right:
Mrs. Sisperd
Mrs. Bowers
Mrs. Newton
Mrs. Denny
Mrs. Richardson
Mrs. Popp
Mrs. Jarrott



Left to Right:
Carl Woolley
Marcy Marriott
Will Bock

COOKS AND CUSTODIANS

ACKNOWLEDGEMENTS

* Department of Conversation
* Anderson's Studio of
Photography
* Miss Nancy Hodson